

A functional material that combines the Cr (VI) reduction activity of *Burkholderia* sp. with the adsorbent capacity of sol-gel materials

Gisela Solange Alvarez, María Lucía Foglia, Daniela Edhit Camporotondi, Maria

Victoria Tuttolomondo, Martín Federico Desimone* and Luis Eduardo Díaz.

Electronic Supplementary Information (ESI)

Figure 1 SEM image of the surface of sol-gel silica materials.

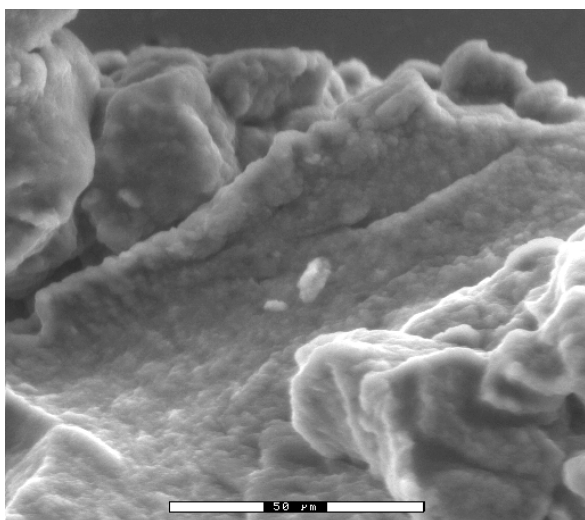


Figure 2 SEM image of *Burkholderia* sp. encapsulated in silica matrices.

