

Supporting Information:

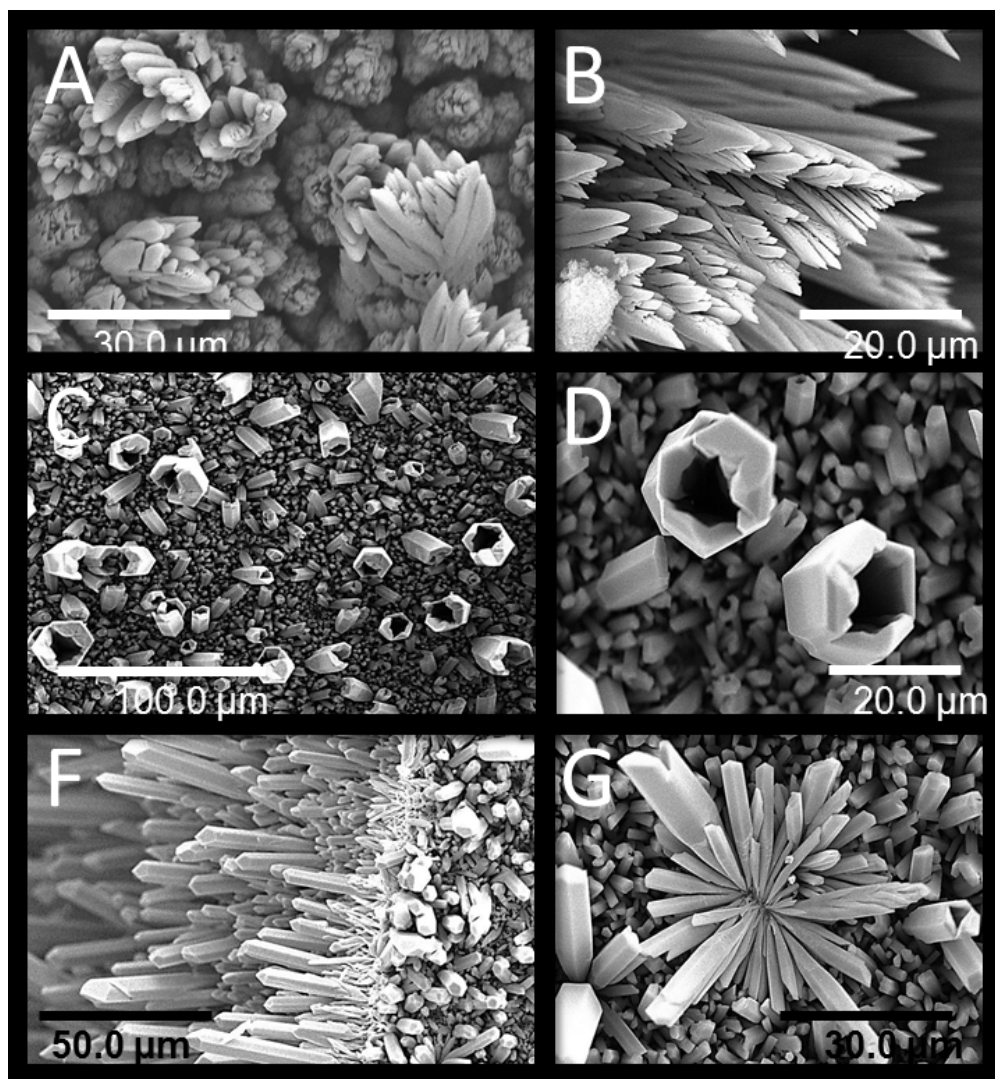


Figure S1. SEM images of Te nanostructures deposited on different substrates. A,B) Si<100>coated with 300 nm SiO₂; C,D) ITO-coated glass; F,G) Si<100>

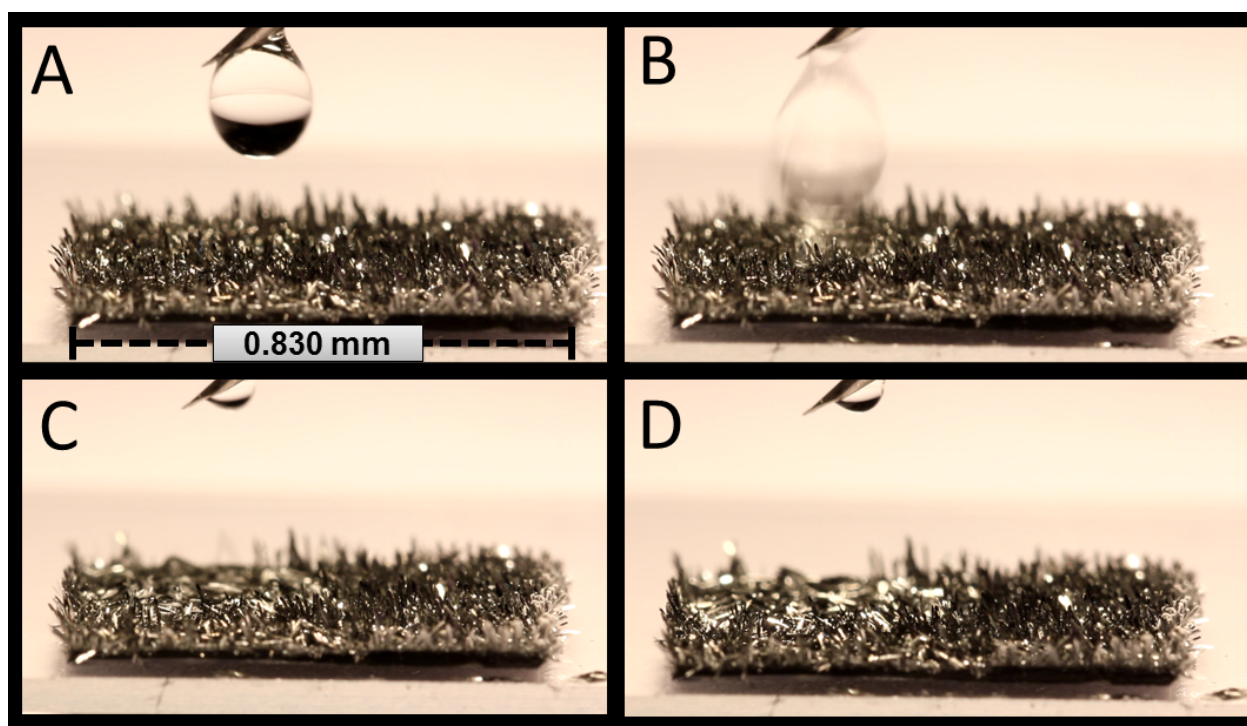


Figure S2. A-D) The progression of images demonstrates the complete spreading of water on a hierarchically textured Te coating deposited onto Si<100>. Complete spreading was achieved within 100 ms in this instance.