

Supplementary Material (ESI) for Molecular BioSystems

This journal is (c) The Royal Society of Chemistry, 2011

Supplementary Material

**Synthesis, biological evaluation and supramolecular assembly of novel analogues of peptidyl nucleosides**

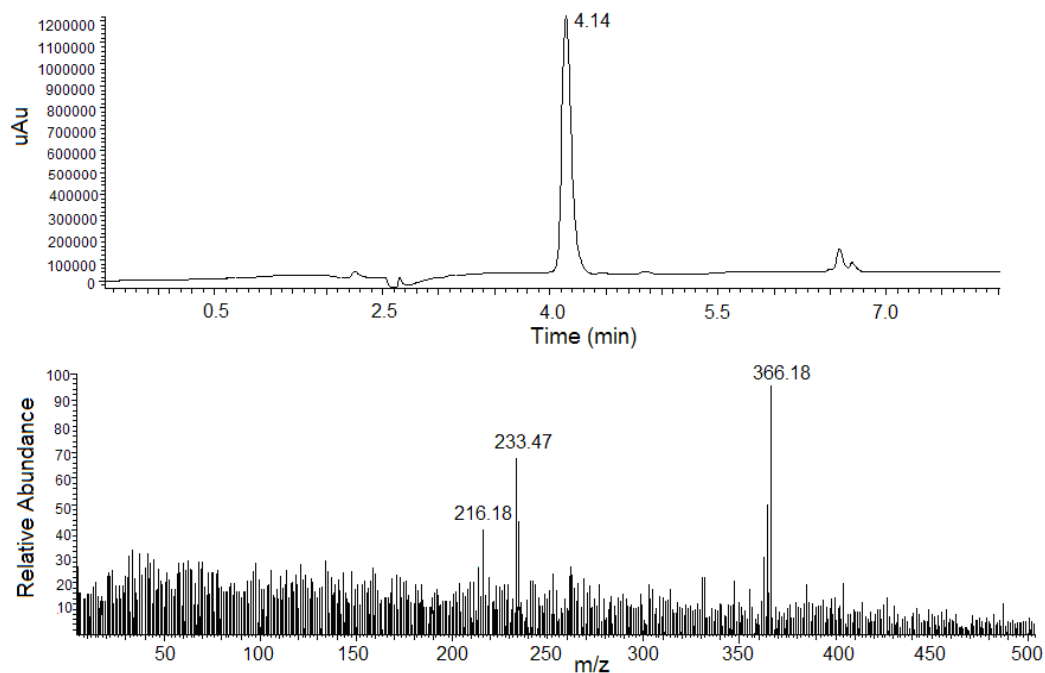
Giovanni N. Roviello<sup>a\*</sup>, Andrea Ricci<sup>a</sup>, Enrico M. Bucci<sup>a</sup> and Carlo Pedone<sup>a</sup>

<sup>a</sup> Dr. G. N. Roviello, Dr. A. Ricci, Dr. E. M. Bucci, Prof. C. Pedone

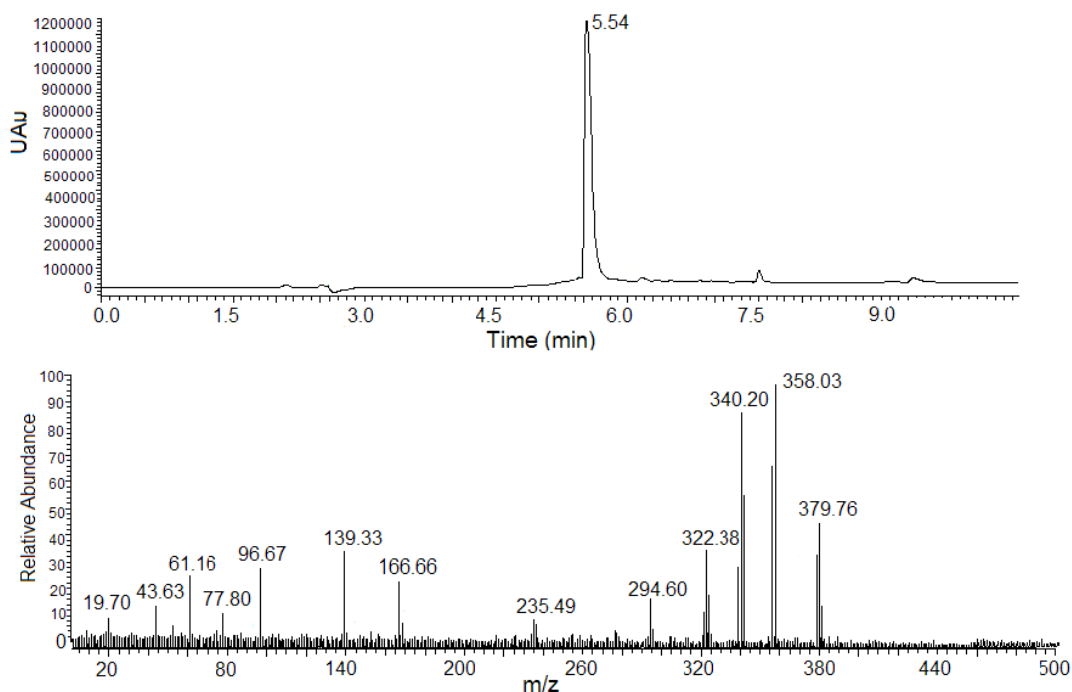
Istituto di Biostrutture e Bioimmagini – CNR, Via Mezzocannone 16, 80134 Napoli, Italy

E-mail: [giroviel@unina.it](mailto:giroviel@unina.it); Fax: +39-(0)81-2534574; Tel: +39-(0)81-2534585

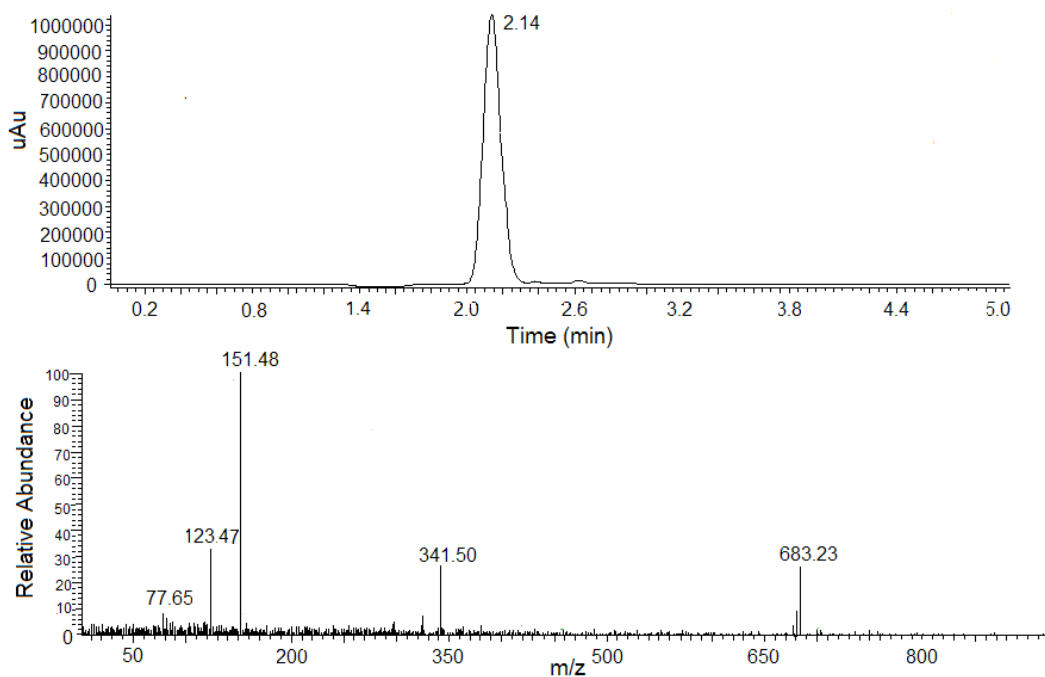
This supplementary information provides the LC ESI-MS (positive ions) profiles of the four nucleopeptides synthesized in the present work.



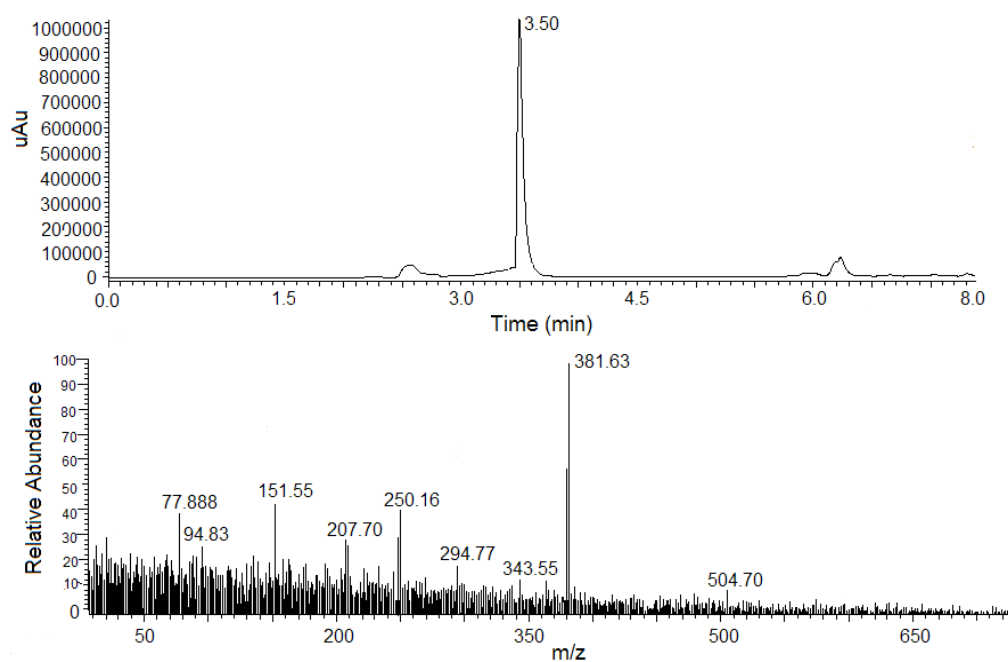
**Figure S1.** LC ESI-MS profile relative to the adenine-containing nucleopeptide;  $t_R$  = 4.14 min; method: 2% (5min) to 30% B in A over 10 min (A=0.05% TFA in H<sub>2</sub>O, B=0.05% TFA in CH<sub>3</sub>CN).



**Figure S2.** LC ESI-MS profile relative to the thymine-containing nucleopeptide;  $t_R$  = 5.54 min; method: 2% (5min) to 70% B in A over 10 min (A=0.05% TFA in H<sub>2</sub>O, B=0.05% TFA in CH<sub>3</sub>CN).



**Figure S3.** LC ESI-MS profile relative to the cytosine-containing nucleopeptide;  $t_R = 2.14$  min; method: 2% (5min) to 30% B in A over 10 min (A=0.05% TFA in H<sub>2</sub>O, B=0.05% TFA in CH<sub>3</sub>CN).



**Figure S4.** LC ESI-MS profile relative to the guanine-containing nucleopeptide;  $t_R = 3.50$  min; method: 2% (5min) to 30% B in A over 10 min (A=0.05% TFA in H<sub>2</sub>O, B=0.05% TFA in CH<sub>3</sub>CN).