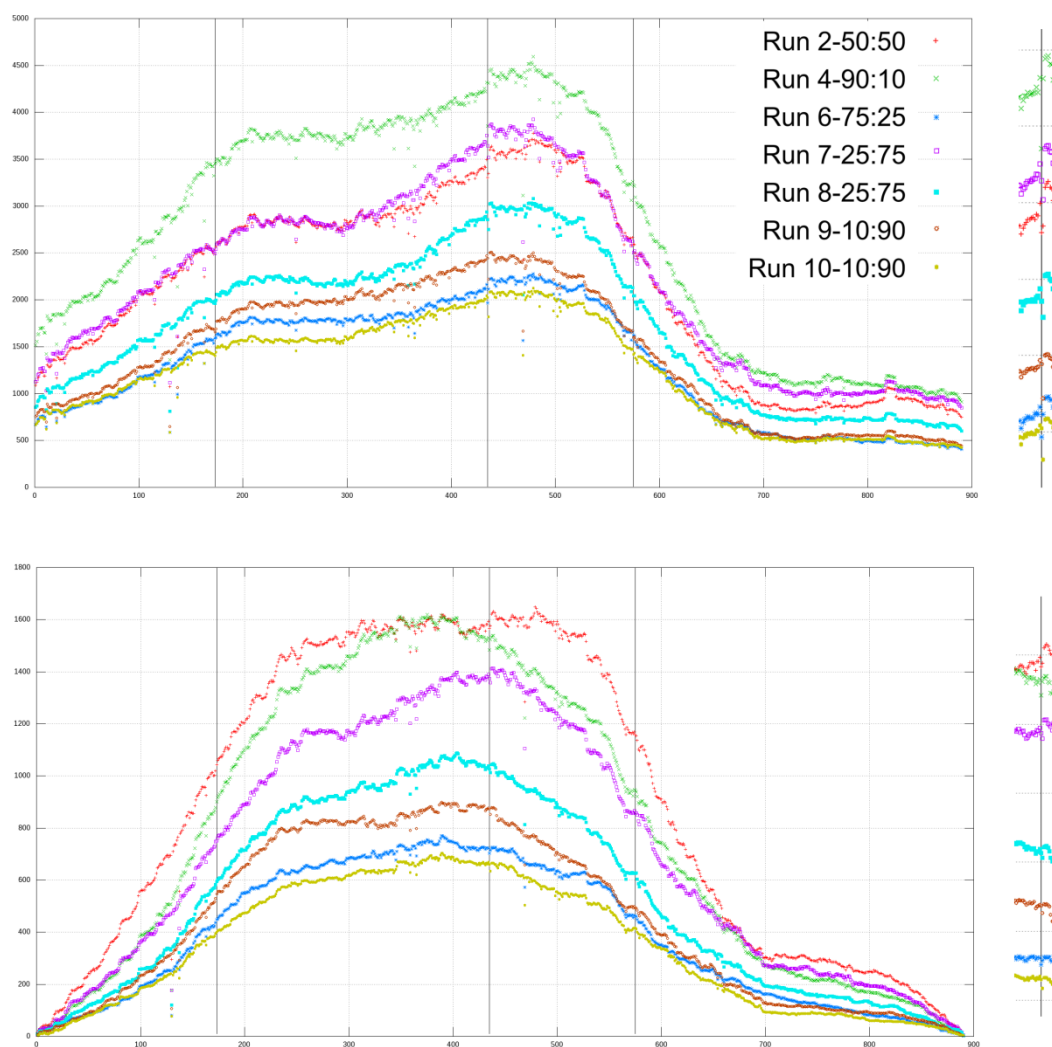


## SUPPLEMENTARY MATERIAL



**Figure S1.** Depth of coverage by TMAP (above) and BWA (below) for segment NS. The complete coverage information from TMAP + DiBayes is not available from manufacturer software. The three vertical lines are drawn at positions 173, 435 and 575. An inset is shown on the right for a magnified view of the mapping around position 435