

## Supplementary Information

### **Comparative metabolite profiling of foxglove aphids (*Aulacorthum solani* Kaltenbach) on leaves from resistant and susceptible soybean strains**

Dan Sato<sup>a, †, \*</sup>, Masahiro Sugimoto<sup>a</sup>, Hiromichi Akashi<sup>a, b</sup>, Masaru Tomita<sup>a</sup>, Tomoyoshi Soga<sup>a</sup>,

<sup>a</sup>*Institute for Advanced Biosciences, Keio University, Tsuruoka, Yamagata 997-0052, Japan*

<sup>b</sup>*Yamagata Shonai Area General Branch Administration Office, Regional Promotion Division, Tsuruoka, Yamagata 997-1392, Japan*

**\*Corresponding author:** Dr. Dan Sato

**†Current address:** Department of Applied Biology, Graduate School of Science and Technology, Kyoto Institute of Technology, Kyoto 606-8585, Japan

**E-mail:** dsato@z7.keio.jp, dsato@kit.ac.jp

**Tel/Fax:** +81-75-724-7532

a)

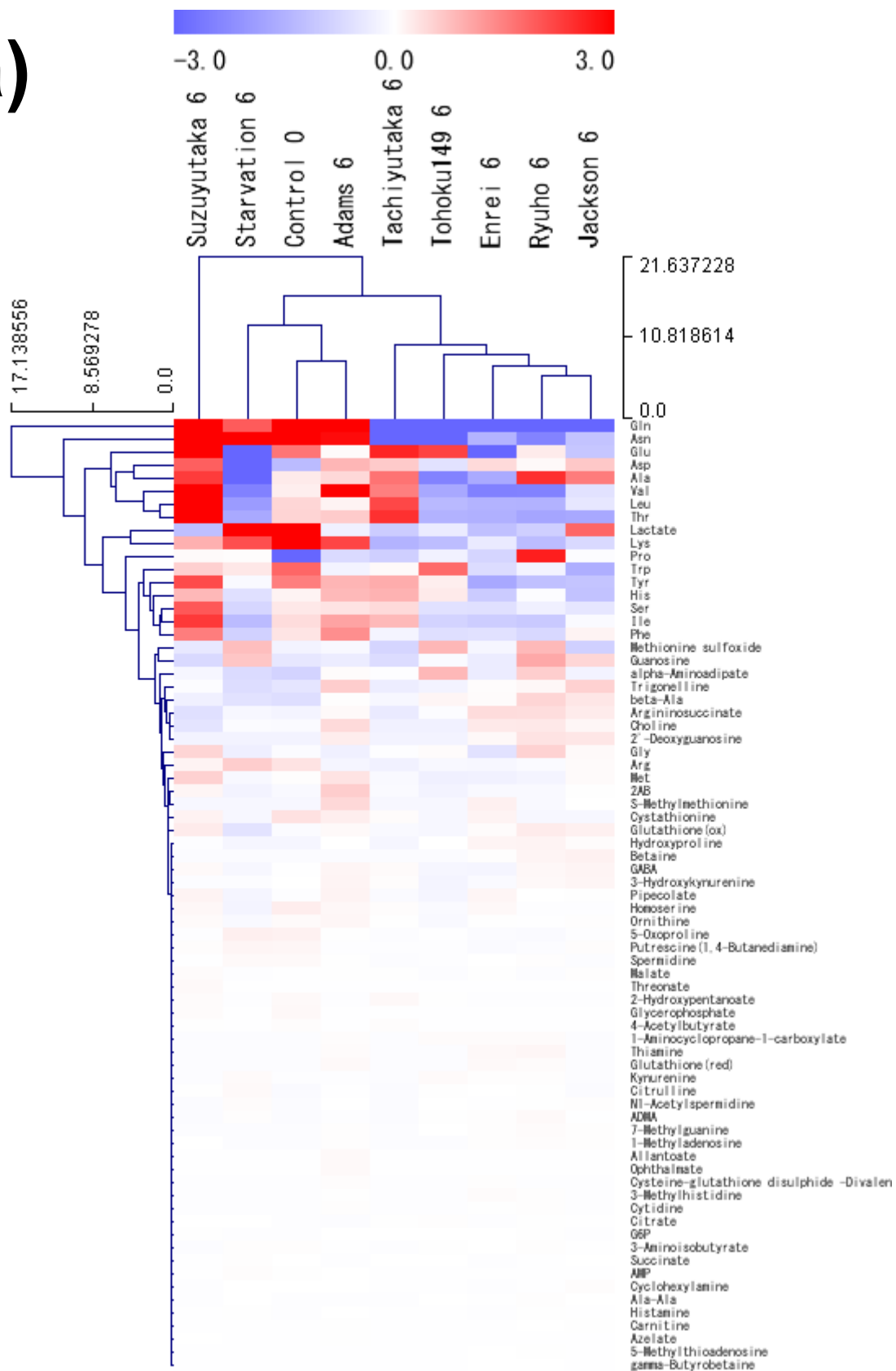


Figure S1

Heatmap showing relative metabolite concentrations in aphids at 6 h a) and 12 h b) of post-inoculation.

b)

