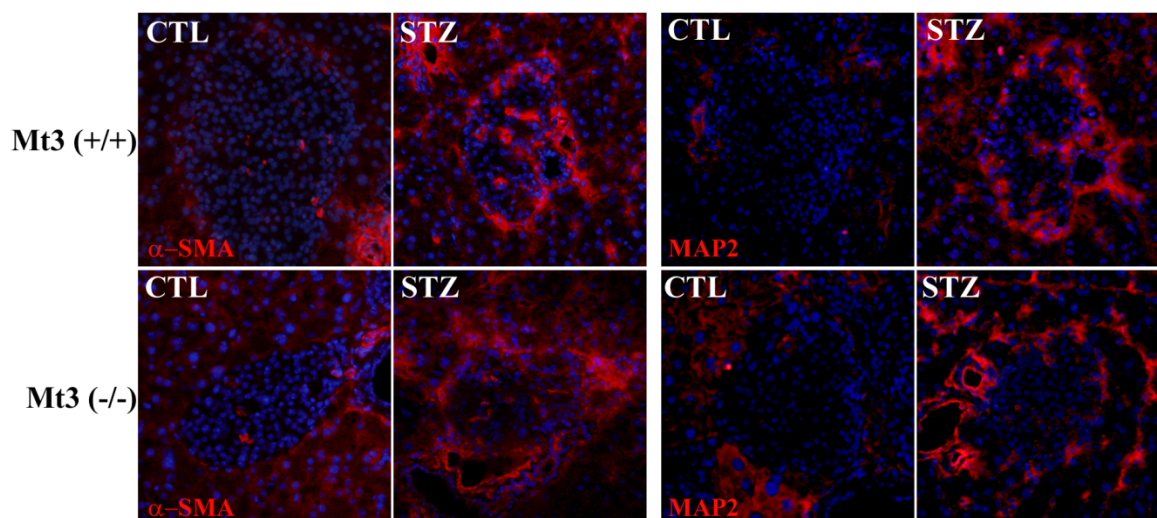


Supplementary Figure 1.



Supplementary 1. Neuronal and vascular cells in islets of STZ-injected WT and Mt3-null mice

Photomicrographs of islets from WT and Mt3-null mice injected with saline or STZ, and immunostained with anti-MAP2 or anti-alpha SMA antibodies. STZ increased the neuronal marker (MAP-2) and vascular marker (alpha SMA) in and around islets. The islets of WT and Mt3-null mice did not show any significant difference in their gross morphology after STZ injection.