

Supplementary Material (ESI) for “*p*-Sulfonatocalix[4]arene and imidazolium zwitterion stabilised nano-arrays of fullerene C<sub>60</sub> and C<sub>70</sub>”

**Supporting Information:**

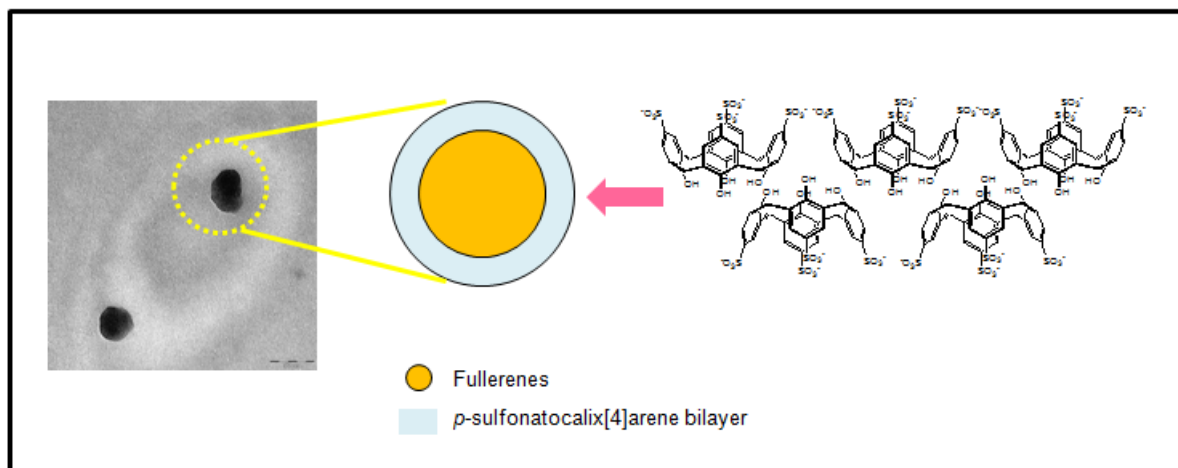


Fig. 1: Schematic representation of nano-particles of fullerenes surrounded by a sheath of the sulfonated calix[4]arene.

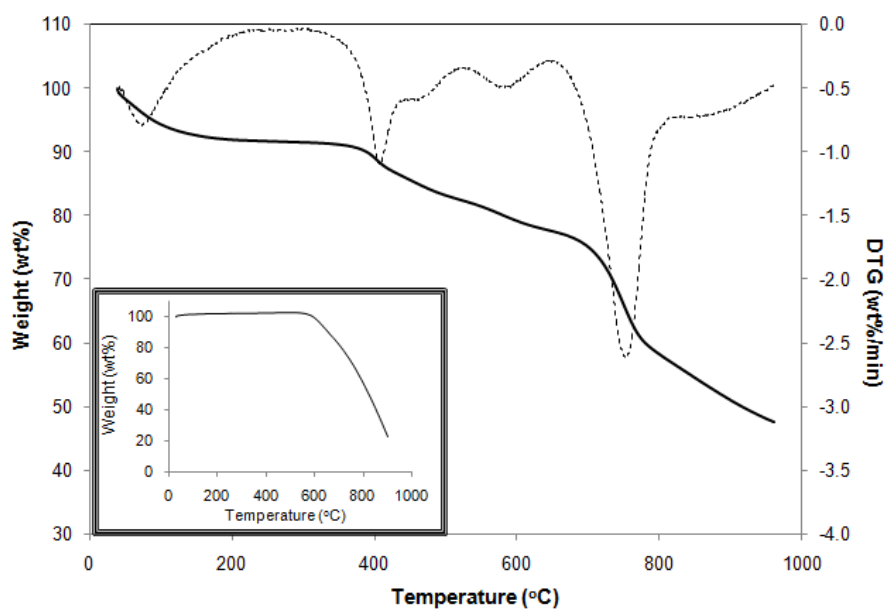


Fig. 2: TGA spectra of *p*-sulfonatocalix[4]arene/C<sub>60</sub> and pristine C<sub>60</sub> (inset).

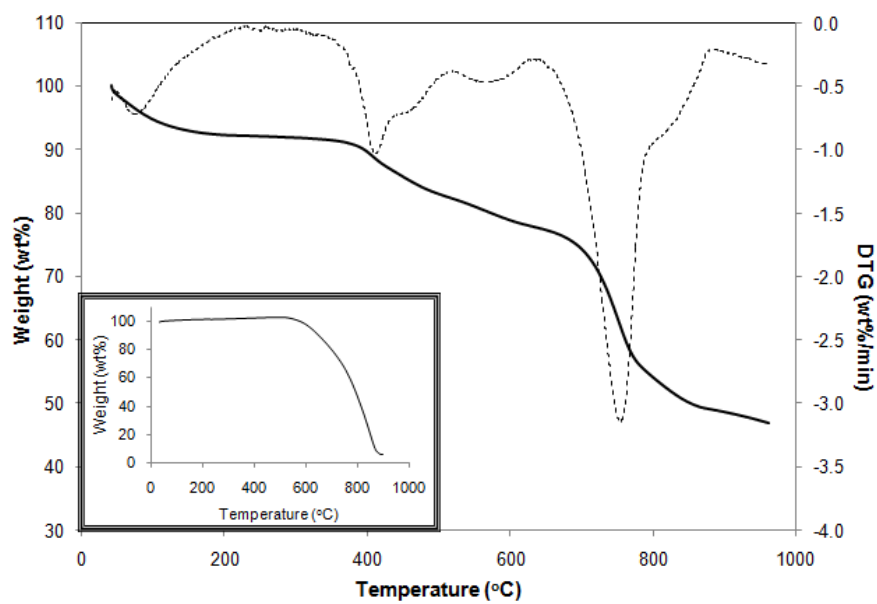


Fig. 3: TGA spectra of *p*-sulfonatocalix[4]arene/C<sub>70</sub> and pristine C<sub>70</sub> (inset).