

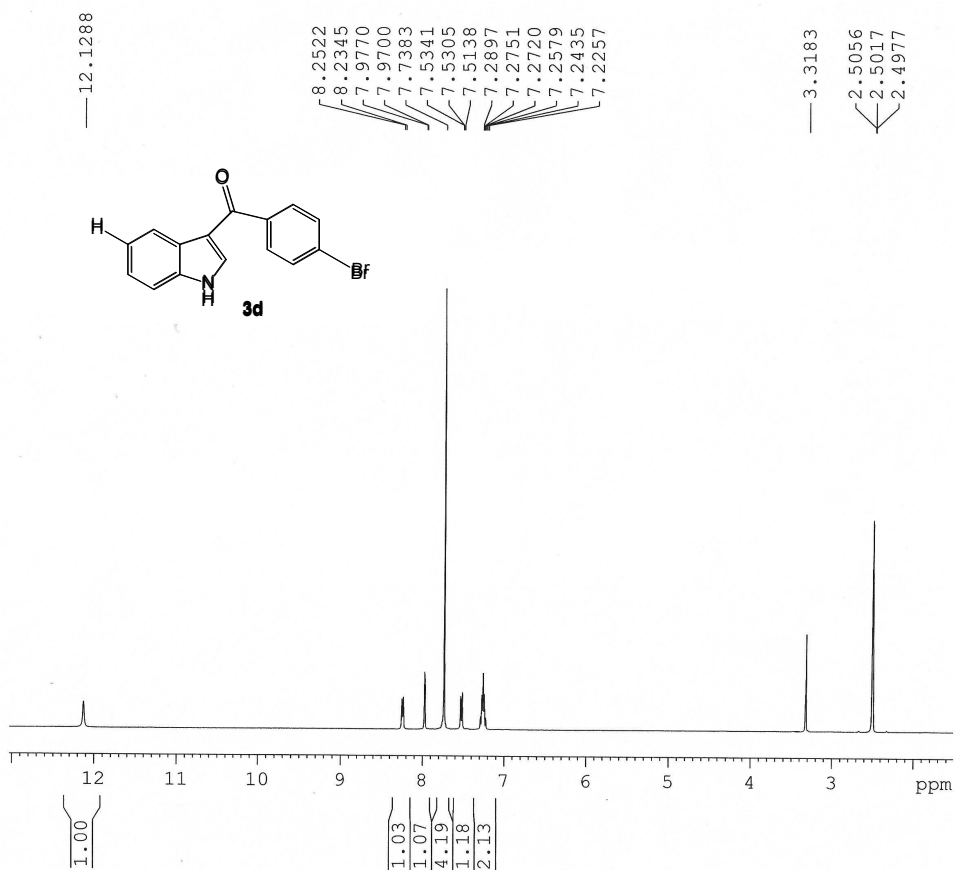
Supporting Information

A novel microwave-irradiated solvent-free 3-acylation of indoles on alumina

Qiu Yu Lai, Rong Su Liao, Shao Yong Wu, Jia Xin Zhang, and Xin Hong Duan*

College of Science, Beijing Forestry University, Beijing, 100083, China.

E-mail: xinhong116@163.com

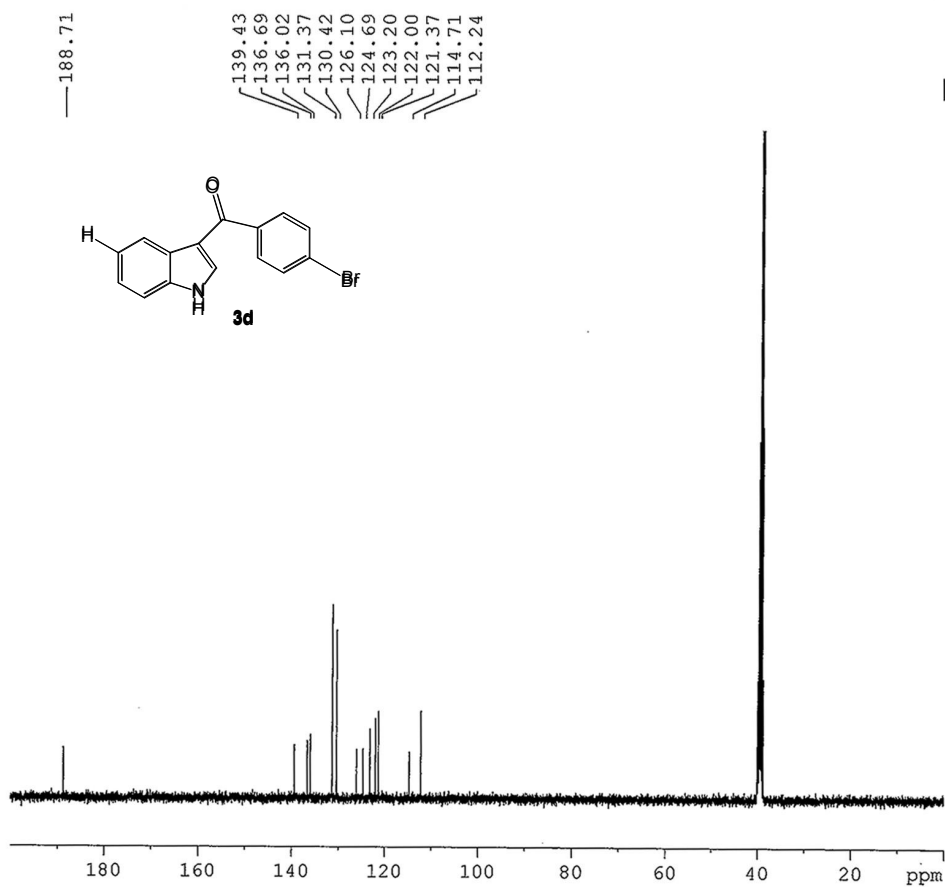


```

NAME      DXH-2012-9-27-1
EXPNO     1
PROCNO    1
Date_     20120927
Time      15.14
INSTRUM   spect
PROBHD    5 mm PABBO BB-
PULPROG   zg30
TD         65536
SOLVENT   DMSO
NS         16
DS         2
SWH        8223.685 Hz
FIDRES     0.125483 Hz
AQ         3.9848397 sec
RG         203
DW         60.800 usec
DE         6.50 usec
TE         298.6 K
D1         1.0000000 sec
TD0        1
    
```

```

===== CHANNEL f1 =====
NUC1      1H
P1        13.80 usec
PL1       -1.00 dB
PL1W      13.18669796 W
SFO1      400.1724712 MHz
SI         32768
SF        400.1699950 MHz
WDW        EM
SSB        0
LB         0.30 Hz
GB         0
PC         1.00
    
```



```

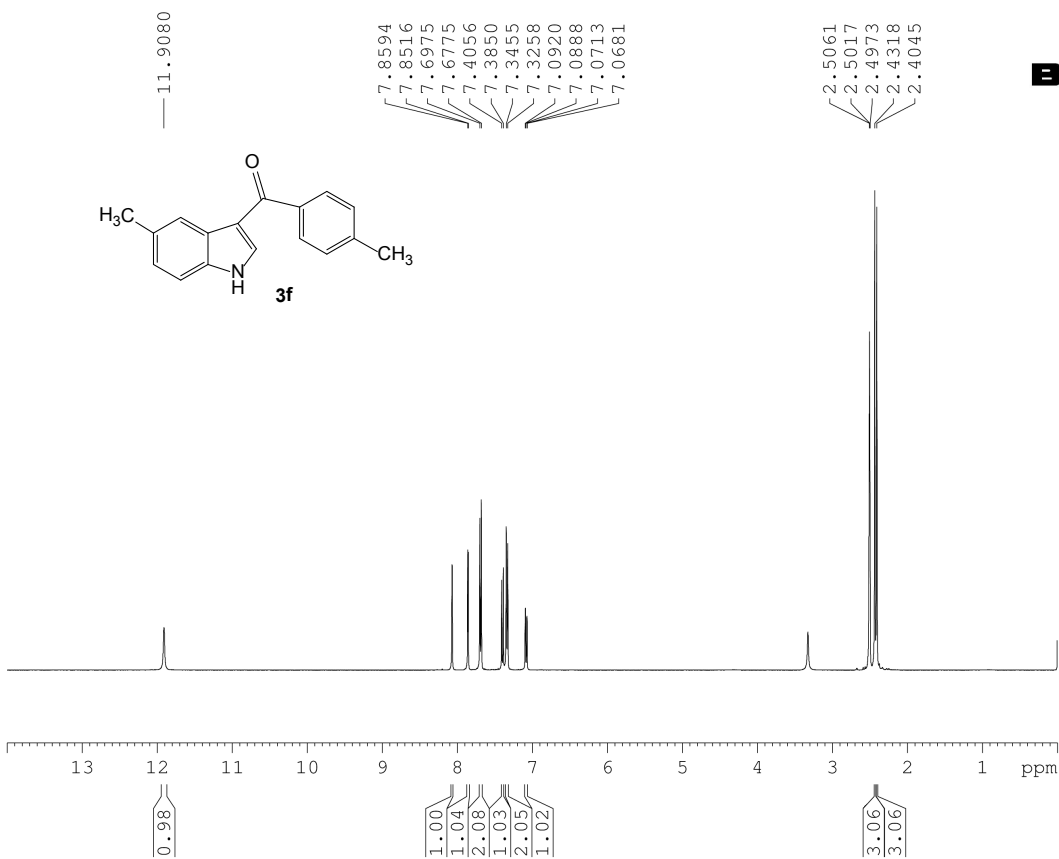
NAME      DXH-2012-12-10-1-C13
EXPNO     1
PROCNO    1
Date_     20121213
Time      11.41
INSTRUM   spect
PROBHD    5 mm PABBO BB-
PULPROG   zgpg30
TD         65536
SOLVENT   DMSO
NS         213
DS         4
SWH        24038.461 Hz
FIDRES     0.366798 Hz
AQ         1.3631988 sec
RG         203
DW         20.800 usec
DE         6.50 usec
TE         293.3 K
D1         2.0000000 sec
D11        0.0300000 sec
TD0        1
    
```

```

===== CHANNEL f1 =====
NUC1      13C
P1         8.50 usec
PL1       -2.00 dB
PL1W      57.32743073 W
SFO1      100.6228888 MHz
    
```

```

===== CHANNEL f2 =====
CPDPRG2   waltz16
NUC2      1H
PCPD2     80.00 usec
PL2       -1.00 dB
PL12      14.26 dB
PL13      14.46 dB
PL2W      13.18669796 W
PL12W     0.39276794 W
PL13W     0.37509048 W
SFO2      400.1715007 MHz
SI         32768
SF        100.6228773 MHz
WDW        EM
SSB        0
LB         1.00 Hz
GB         0
PC         1.40
    
```

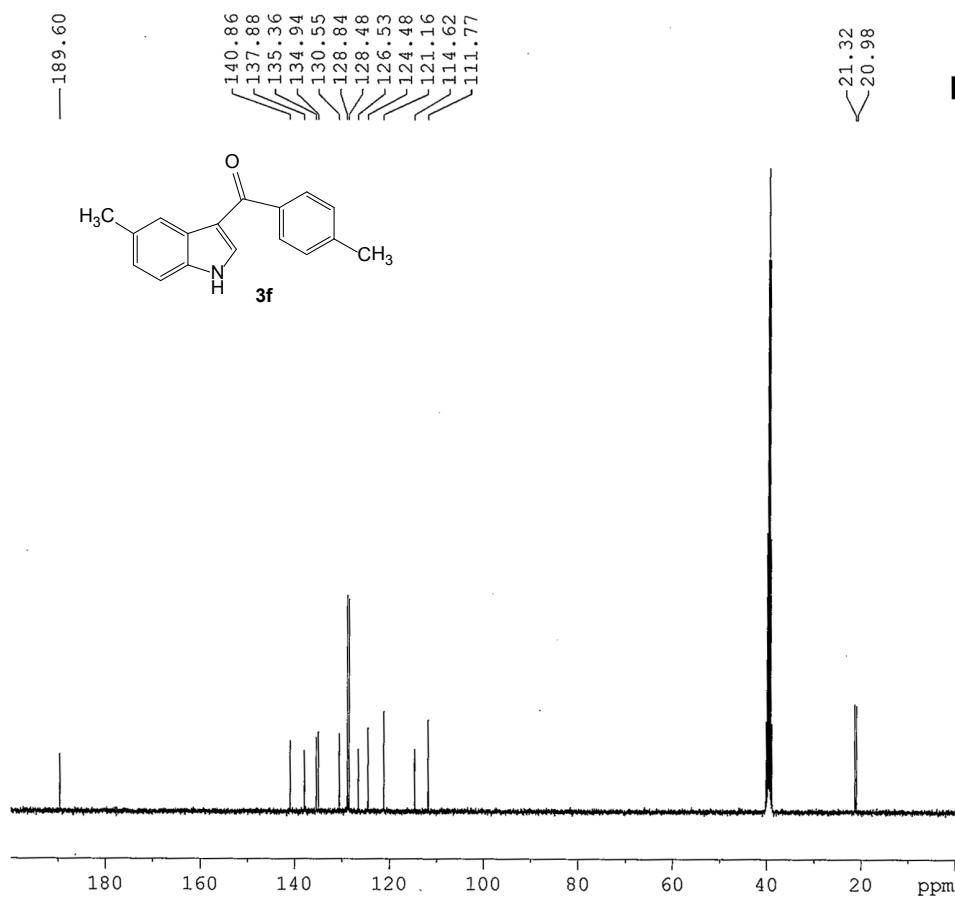


```

NAME DXH-130716-M
EXPNO 1
PROCNO 1
Date_ 20130716
Time 16.05
INSTRUM spect
PROBHD 5 mm PABBO BB-
PULPROG zg30
TD 65536
SOLVENT DMSO
NS 16
DS 2
SWH 8223.685 Hz
FIDRES 0.125483 Hz
AQ 3.9846387 sec
RG 181
DW 60.800 usec
DE 6.50 usec
TE 300.2 K
D1 1.00000000 sec
TDO 1
    
```

```

===== CHANNEL f1 =====
NUC1 1H
P1 13.80 usec
PL1 -1.00 dB
PL1W 13.18669796 W
SF01 400.1724712 MHz
SI 32768
SF 400.1639953 MHz
WDW EM
SSB 0
LB 0.30 Hz
GB 0
PC 1.00
    
```



```

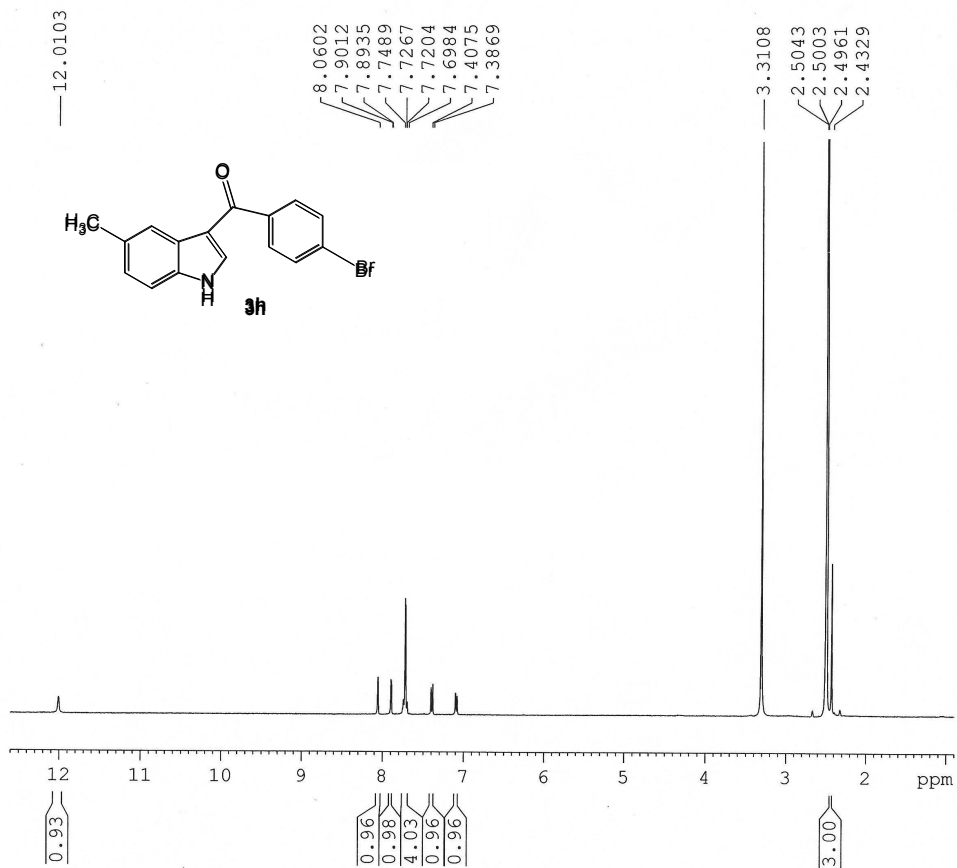
NAME DXH-2012-12-10-5-C13
EXPNO 1
PROCNO 1
Date_ 20121213
Time 11.26
INSTRUM spect
PROBHD 5 mm PABBO BB-
PULPROG zgpg30
TD 65536
SOLVENT DMSO
NS 324
DS 4
SWH 24038.461 Hz
FIDRES 0.366798 Hz
AQ 1.3631988 sec
RG 203
DW 20.800 usec
DE 6.50 usec
TE 293.2 K
D1 2.00000000 sec
D11 0.03000000 sec
TDO 1
    
```

```

===== CHANNEL f1 =====
NUC1 13C
P1 8.50 usec
PL1 -2.00 dB
PL1W 57.32743073 W
SF01 100.6328888 MHz
    
```

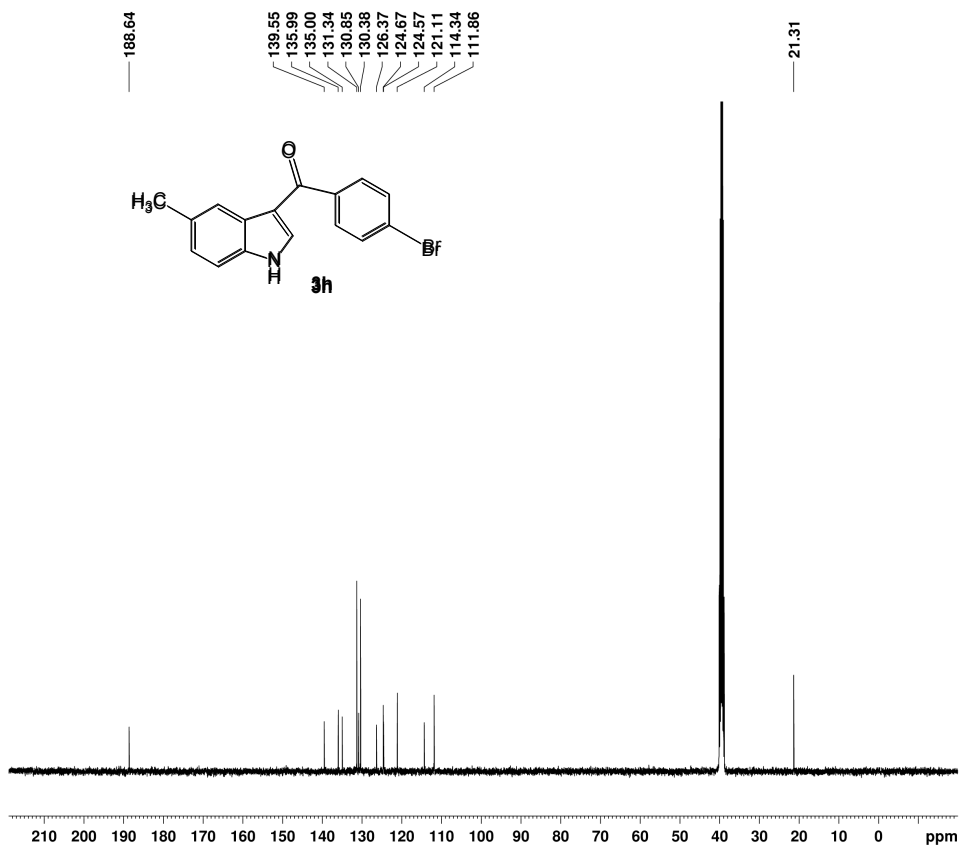
```

===== CHANNEL f2 =====
CPDPRG2 waltz16
NUC2 1H
PCPD2 80.00 usec
PL2 -1.00 dB
PL12 14.26 dB
PL13 14.46 dB
PL2W 13.18669796 W
PL12W 0.39276794 W
PL13W 0.37509048 W
SF02 400.1716007 MHz
SI 32768
SF 100.6228773 MHz
WDW EM
SSB 0
LB 1.00 Hz
GB 0
PC 1.40
    
```



NAME DXH-2012-9-25-1
 EXPNO 1
 PROCNO 1
 Date_ 20120925
 Time 16.45
 INSTRUM spect
 PROBHD 5 mm PABBO BB-
 PULPROG zg30
 TD 65536
 SOLVENT DMSO
 NS 16
 DS 2
 SWH 8223.685 Hz
 FIDRES 0.125483 Hz
 AQ 3.9846387 sec
 RG 203
 DW 60.800 usec
 DE 6.50 usec
 TE 299.0 K
 D1 1.0000000 sec
 TD0 1

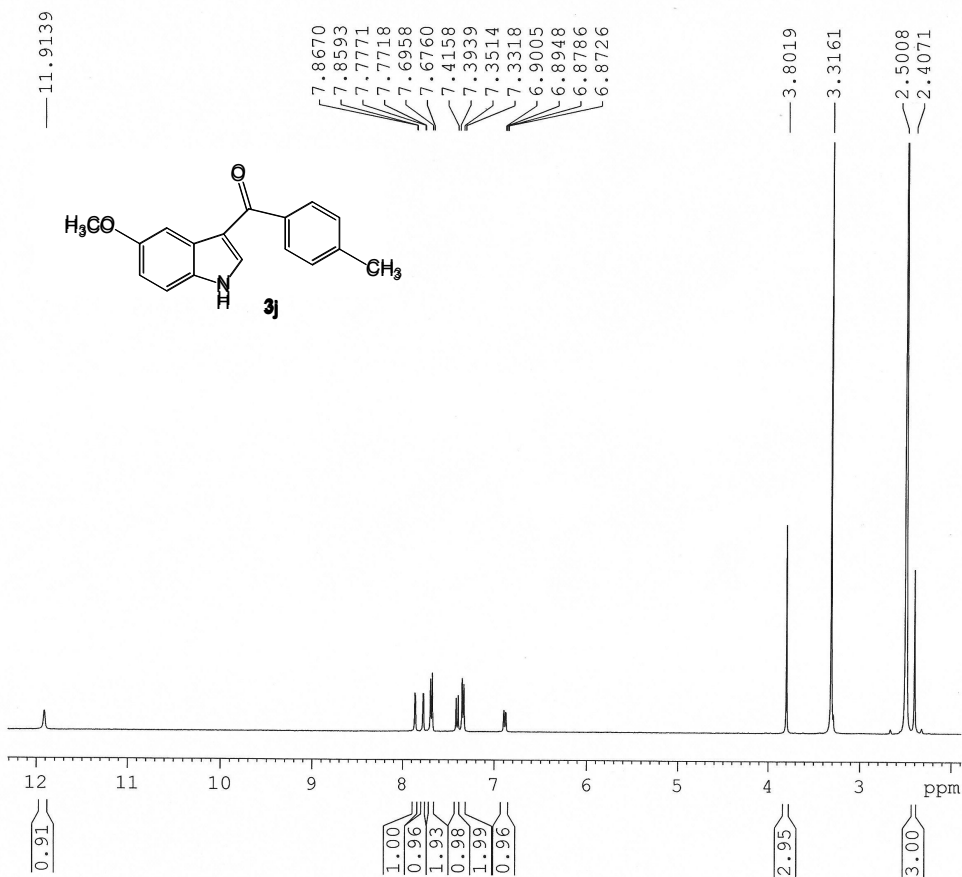
===== CHANNEL f1 =====
 NUC1 1H
 P1 13.80 usec
 PL1 -1.00 dB
 PL1W 13.18669796 W
 SF01 400.1724712 MHz
 SI 32768
 SF 400.1699956 MHz
 WDW EM
 SSB 0
 LB 0.30 Hz
 GB 0
 PC 1.00



NAME DXH-2012-12-14-4-C13
 EXPNO 1
 PROCNO 1
 Date_ 20121218
 Time 11.27
 INSTRUM spect
 PROBHD 5 mm PABBO BB-
 PULPROG zgpg30
 TD 65536
 SOLVENT DMSO
 NS 100
 DS 4
 SWH 24038.461 Hz
 FIDRES 0.366798 Hz
 AQ 1.3631988 sec
 RG 203
 DW 20.800 usec
 DE 6.50 usec
 TE 293.1 K
 D1 2.0000000 sec
 D11 0.0300000 sec
 TD0 1

===== CHANNEL f1 =====
 NUC1 13C
 P1 8.50 usec
 PL1 -2.00 dB
 PL1W 57.32743073 W
 SF01 100.6328888 MHz

===== CHANNEL f2 =====
 CPDPRG2 waltz16
 NUC2 1H
 PCPD2 80.00 usec
 PL2 -1.00 dB
 PL12 14.26 dB
 PL13 14.46 dB
 PL2W 13.18669796 W
 PL12W 0.39276794 W
 PL13W 0.37509048 W
 SF02 400.1716007 MHz
 SI 32768
 SF 100.6228773 MHz
 WDW EM
 SSB 0
 LB 1.00 Hz
 GB 0
 PC 1.40

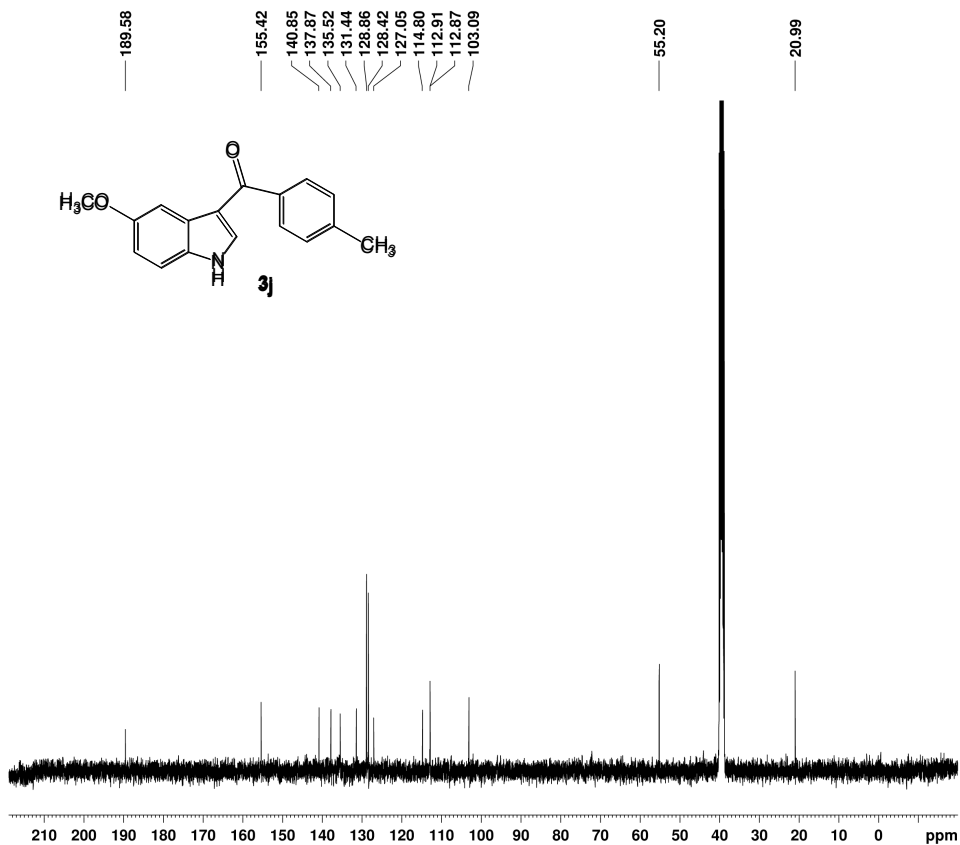


```

NAME    DXH-2012-9-27-3
EXPNO   1
PROCNO  1
Date_   20120927
Time    15.23
INSTRUM spect
PROBHD  5 mm PABBO BB-
PULPROG zg30
TD       65536
SOLVENT DMSO
NS       16
DS       2
SWH      8223.685 Hz
FIDRES   0.125483 Hz
AQ       3.9846387 sec
RG       203
DW       60.800 usec
DE       6.50 usec
TE       298.5 K
D1       1.00000000 sec
TDO      1
    
```

```

===== CHANNEL f1 =====
NUC1    1H
P1      13.80 usec
PL1     -1.00 dB
PL1W    13.18669796 W
SF01    400.1724712 MHz
SI      32768
SF      400.1699955 MHz
WDW     EM
SSB     0
LB      0.30 Hz
GB      0
PC      1.00
    
```



```

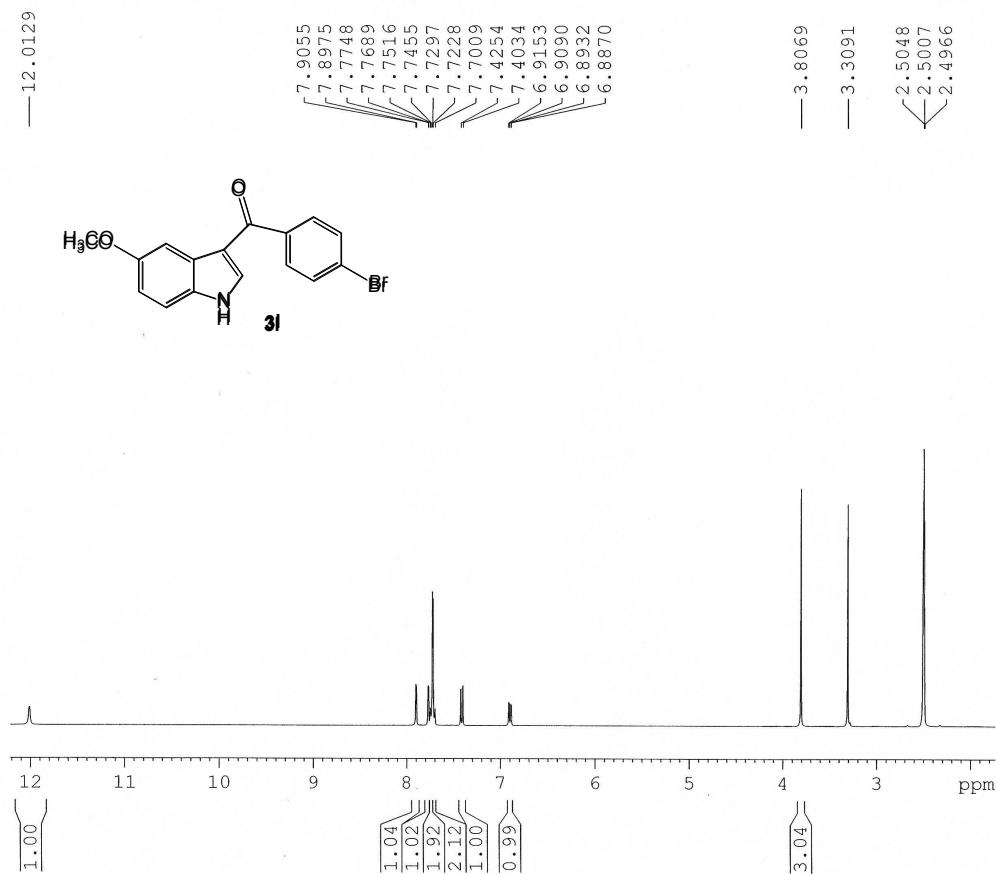
NAME    DXH-2012-12-10-2-C13
EXPNO   1
PROCNO  1
Date_   20121214
Time    14.16
INSTRUM spect
PROBHD  5 mm PABBO BB-
PULPROG zgpg30
TD       65536
SOLVENT DMSO
NS       1200
DS       4
SWH      24038.461 Hz
FIDRES   0.366798 Hz
AQ       1.3631988 sec
RG       203
DW       20.800 usec
DE       6.50 usec
TE       293.2 K
D1       2.00000000 sec
D11     0.03000000 sec
TDO      1
    
```

```

===== CHANNEL f1 =====
NUC1    13C
P1      8.50 usec
PL1     -2.00 dB
PL1W    57.32743073 W
SF01    100.6328888 MHz
    
```

```

===== CHANNEL f2 =====
CPDPRG2 waltz16
NUC2    1H
PCPD2   80.00 usec
PL2     -1.00 dB
PL12    14.26 dB
PL13    14.46 dB
PL2W    13.18669796 W
PL12W   0.39276794 W
PL13W   0.37509048 W
SF02    400.1716007 MHz
SI      32768
SF      100.6228773 MHz
WDW     EM
SSB     0
LB      1.00 Hz
GB      0
PC      1.40
    
```

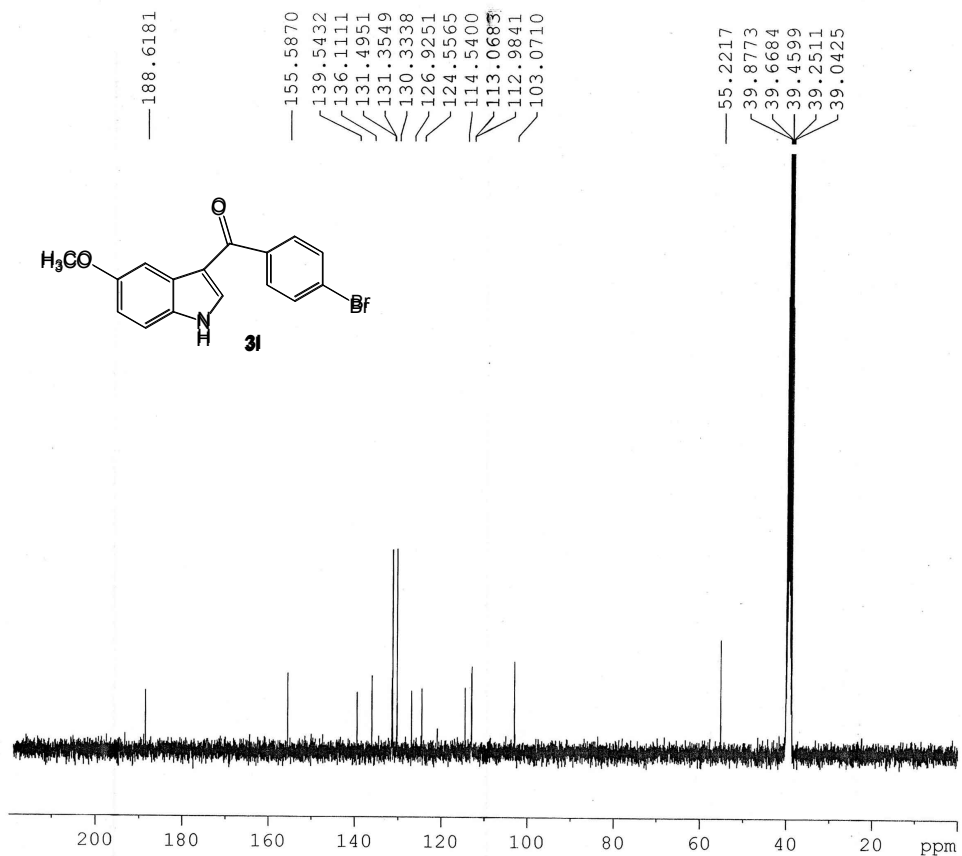


```

NAME      DXH2012-10-11-1
EXPNO    1
PROCNO   1
Date_    20121011
Time     15.03
INSTRUM  spect
PROBHD   5 mm PABBO BB-
PULPROG  zg30
TD       65536
SOLVENT  DMSO
NS       16
DS       2
SWH      8223.685 Hz
FIDRES   0.125483 Hz
AQ       3.9846387 sec
RG       203
DW       60.800 usec
DE       6.50 usec
TE       300.3 K
D1       1.0000000 sec
TD0      1
    
```

```

===== CHANNEL f1 =====
NUC1     1H
P1       13.80 usec
PL1     -1.00 dB
PL1W    13.18669796 W
SFO1    400.1724712 MHz
SI      32768
SF      400.1699951 MHz
WDW     EM
SSB     0
LB      0.30 Hz
GB      0
PC      1.00
    
```



```

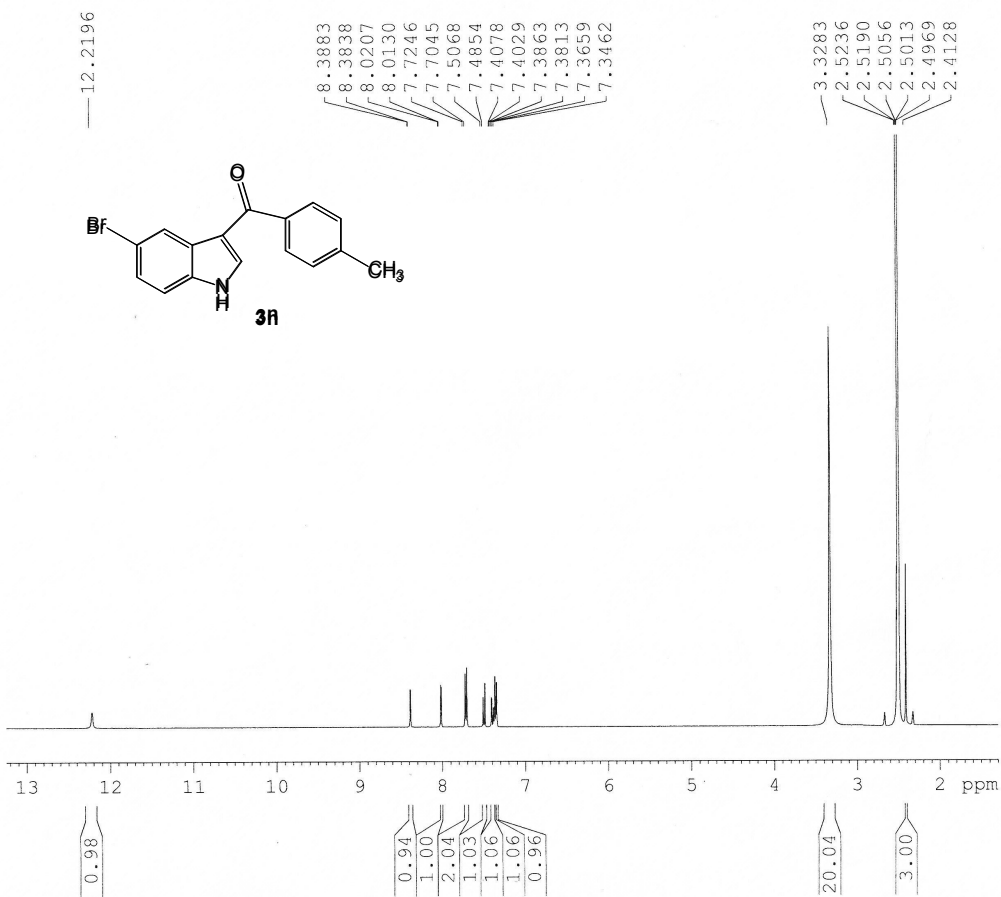
NAME      DXH-2012-12-20-1-C13
EXPNO    1
PROCNO   1
Date_    20121221
Time     11.19
INSTRUM  spect
PROBHD   5 mm PABBO BB-
PULPROG  zgpg30
TD       65536
SOLVENT  DMSO
NS       801
DS       4
SWH      24038.461 Hz
FIDRES   0.366798 Hz
AQ       1.3631988 sec
RG       203
DW       20.800 usec
DE       6.50 usec
TE       293.2 K
D1       2.0000000 sec
D11     0.0300000 sec
TD0      1
    
```

```

===== CHANNEL f1 =====
NUC1     13C
P1       8.50 usec
PL1     -2.00 dB
PL1W    57.32743073 W
SFO1    100.6328888 MHz
    
```

```

===== CHANNEL f2 =====
CPDPRG2  waltz16
NUC2     1H
PCPD2    80.00 usec
PL2     -1.00 dB
PL12    14.26 dB
PL13    14.46 dB
PL2W    13.18669796 W
PL12W   0.39276794 W
PL13W   0.37509048 W
SFO2    400.1716007 MHz
SI      32768
SF      100.6228773 MHz
WDW     EM
SSB     0
LB      1.00 Hz
GB      0
PC      1.40
    
```

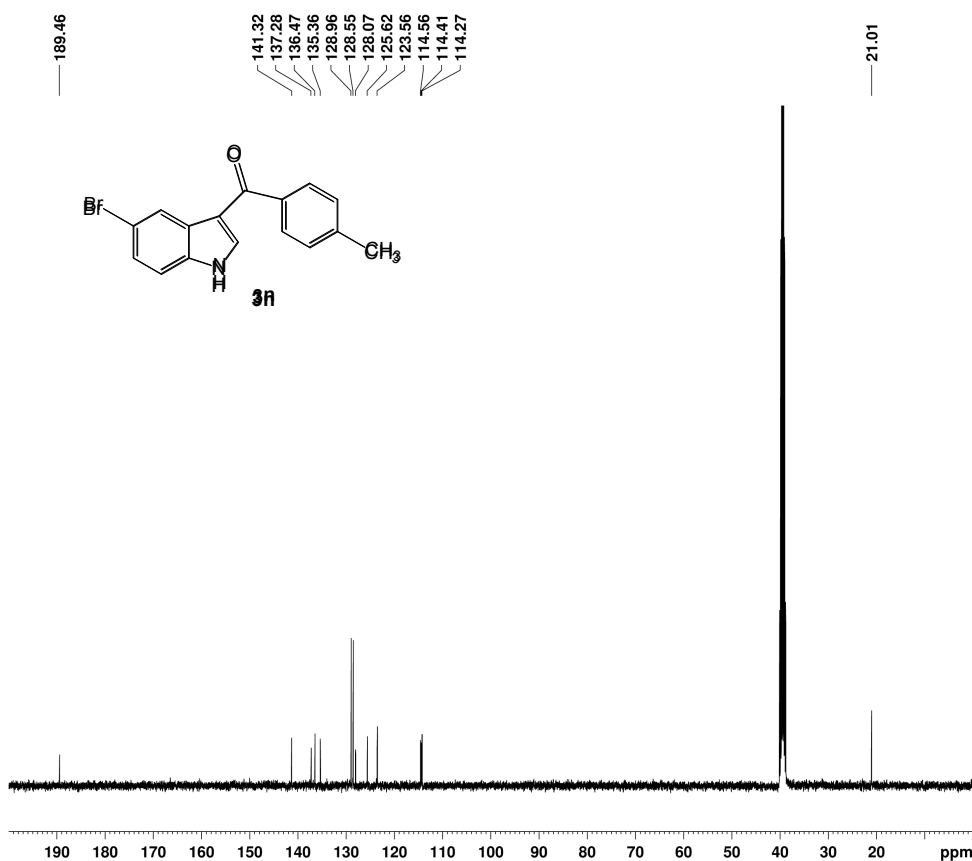


```

NAME      DXH-2012-9-11-4
EXPNO    1
PROCNO   1
Date_    20120911
Time     15.02
INSTRUM  spect
PROBHD   5 mm PABBO BB-
PULPROG  zg30
TD       65536
SOLVENT  DMSO
NS       16
DS       2
SWH      9223.695 Hz
FIDRES   0.125483 Hz
AQ       3.9846387 sec
RG       203
DW       60.800 usec
DE       6.50 usec
TE       297.8 K
D1       1.0000000 sec
TD0      1
    
```

```

===== CHANNEL f1 =====
NUC1      1H
P1        13.80 usec
PL1       -1.00 dB
PL1W     13.18669796 W
SFO1     400.1724712 MHz
SI        32768
SF        400.1699950 MHz
WDW       EM
SSB       0
LB        0.30 Hz
GB        0
PC        1.00
    
```



```

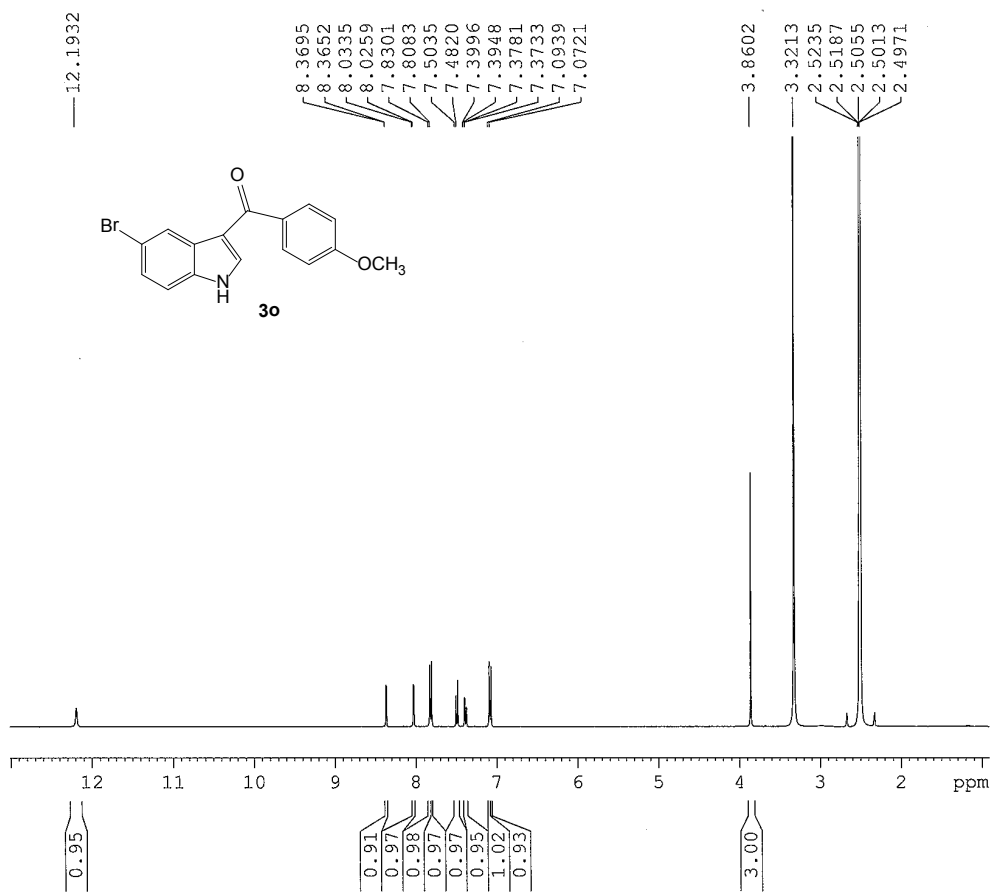
NAME      DXH-2012-12-10-3-C13
EXPNO    1
PROCNO   1
Date_    20121213
Time     15.23
INSTRUM  spect
PROBHD   5 mm PABBO BB-
PULPROG  zgpg30
TD       65536
SOLVENT  DMSO
NS       621
DS       4
SWH      24038.461 Hz
FIDRES   0.366798 Hz
AQ       1.3631988 sec
RG       203
DW       20.800 usec
DE       6.50 usec
TE       293.1 K
D1       2.0000000 sec
D11      0.0300000 sec
TD0      1
    
```

```

===== CHANNEL f1 =====
NUC1      13C
P1        8.50 usec
PL1       -2.00 dB
PL1W     57.32743073 W
SFO1     100.6328888 MHz
    
```

```

===== CHANNEL f2 =====
CPDPRG2  waltz16
NUC2      1H
PCPD2    80.00 usec
PL2       -1.00 dB
PL12     14.26 dB
PL13     14.46 dB
PL2W     13.18669796 W
PL12W    0.39276794 W
PL13W    0.37509048 W
SFO2     400.1716007 MHz
SI        32768
SF        100.6228773 MHz
WDW       EM
SSB       0
LB        1.00 Hz
GB        0
PC        1.40
    
```

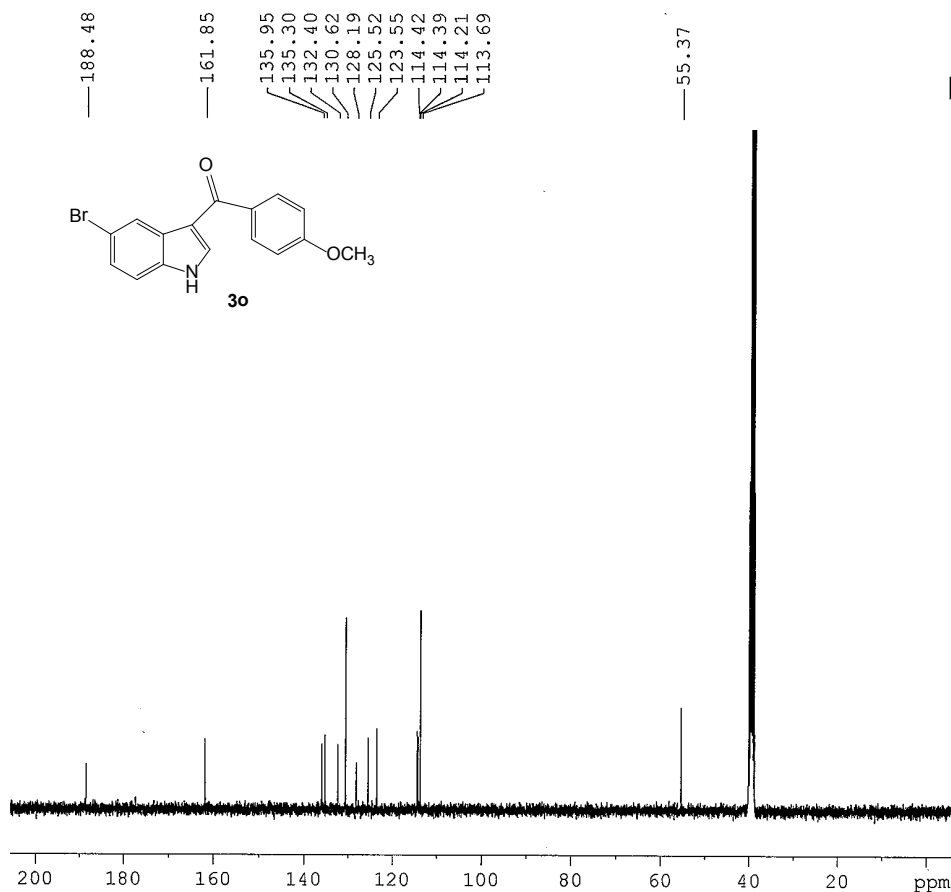


```

NAME      DXH-2012-9-11-3
EXPNO     1
PROCNO    1
Date_     20120911
Time      14.56
INSTRUM   spect
PROBHD    5 mm PABBO BB-
PULPROG   zg30
TD        65536
SOLVENT   DMSO
NS        16
DS        2
SWH       8223.686 Hz
FIDRES    0.125483 Hz
AQ        3.9846387 sec
RG        203
DW        60.800 usec
DE        6.50 usec
TE        297.7 K
D1        1.00000000 sec
TD0       1
    
```

```

===== CHANNEL f1 =====
NUC1      1H
P1        13.80 usec
PL1       -1.00 dB
PL1W      13.18669796 W
SFO1      400.1724712 MHz
SI        32768
SF        400.1699950 MHz
WDW       EM
SSB       0
LB        0.30 Hz
GB        0
PC        1.00
    
```



```

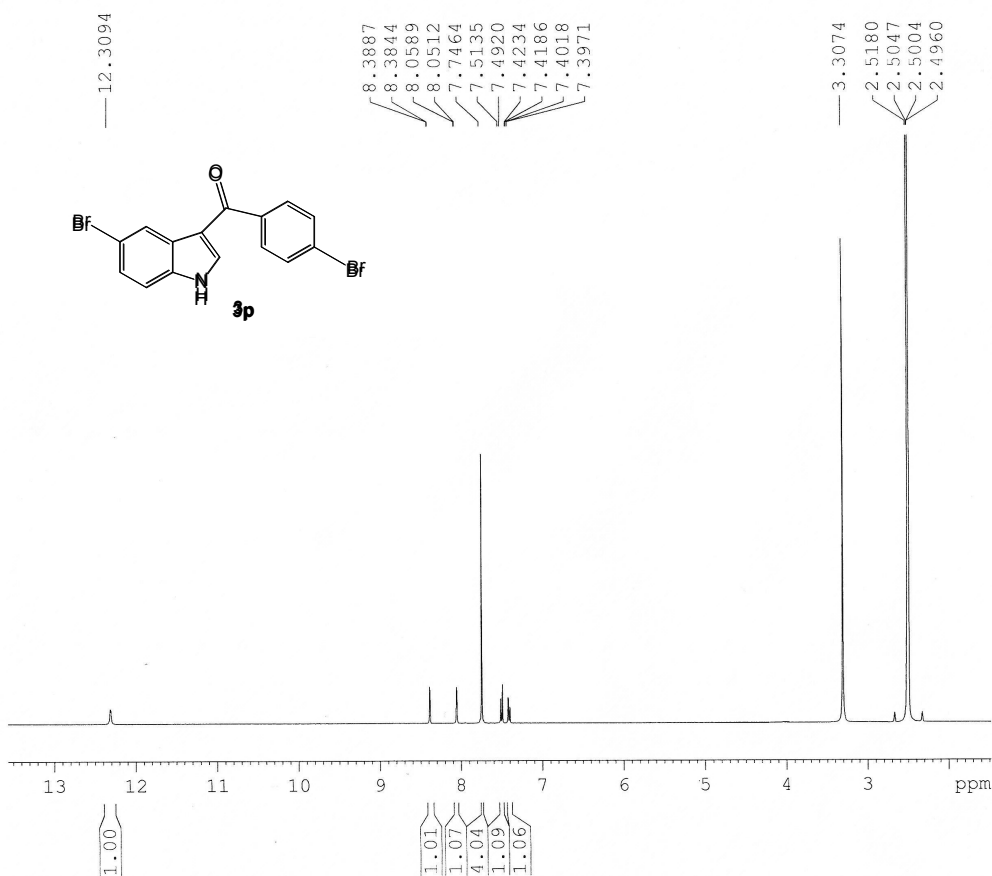
NAME      DXH-2012-12-10-4-C13
EXPNO     1
PROCNO    1
Date_     20121212
Time      11.47
INSTRUM   spect
PROBHD    5 mm PABBO BB-
PULPROG   zgpg30
TD        65536
SOLVENT   DMSO
NS        1024
DS        4
SWH       24038.461 Hz
FIDRES    0.366798 Hz
AQ        1.3631988 sec
RG        203
DW        20.800 usec
DE        6.50 usec
TE        293.6 K
D1        2.00000000 sec
D11       0.03000000 sec
TD0       1
    
```

```

===== CHANNEL f1 =====
NUC1      13C
P1        8.50 usec
PL1       -2.00 dB
PL1W      57.32743073 W
SFO1      100.6328888 MHz
    
```

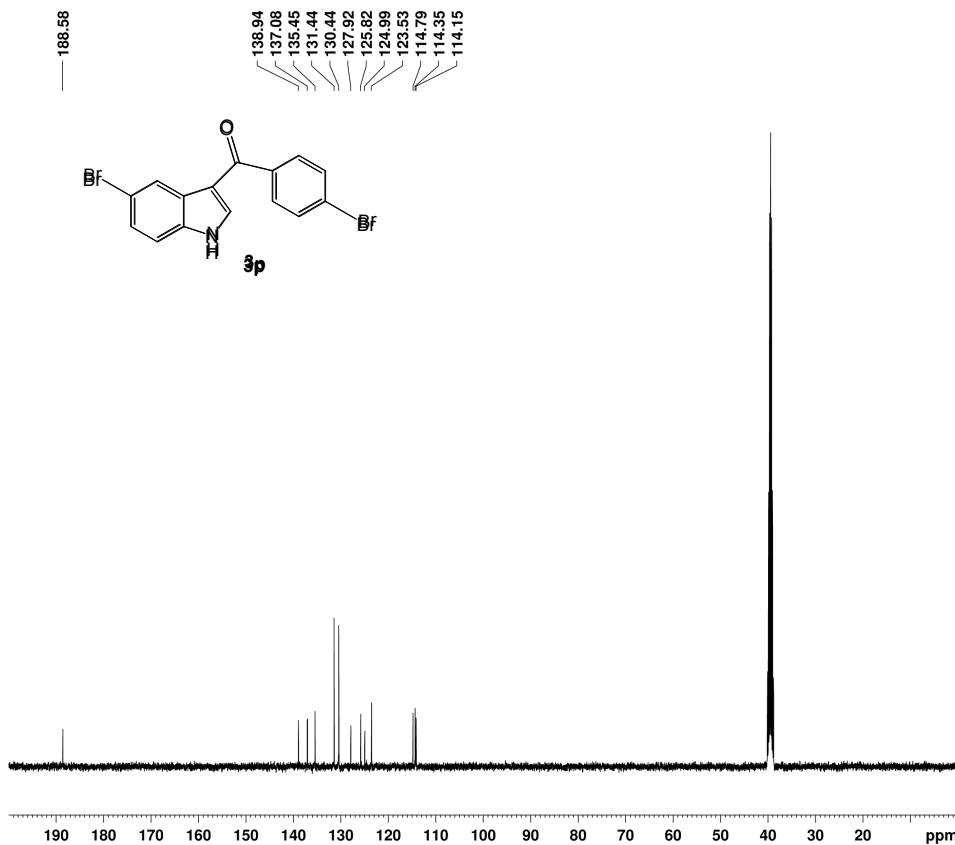
```

===== CHANNEL f2 =====
CPDPRG2   waltz16
NUC2      1H
PCPD2     80.00 usec
PL2       -1.00 dB
PL12      14.26 dB
PL13      14.46 dB
PL2W      13.18669796 W
PL12W     0.39276794 W
PL13W     0.37599048 W
SFO2      400.1716007 MHz
SI        32768
SF        100.6228773 MHz
WDW       EM
SSB       0
LB        1.00 Hz
GB        0
PC        1.40
    
```

NAME DXH-2012-9-13-3
 EXPNO 1
 PROCNO 1
 Date_ 20120913
 Time 14.44
 INSTRUM spect
 PROBHD 5 mm PABBO BB-
 PULPROG zg30
 TD 65536
 SOLVENT DMSO
 NS 16
 DS 2
 SWH 8223.685 Hz
 FIDRES 0.125483 Hz
 AQ 3.9846387 sec
 RG 203
 DW 60.800 usec
 DE 6.50 usec
 TE 300.1 K
 D1 1.0000000 sec
 TD0 1

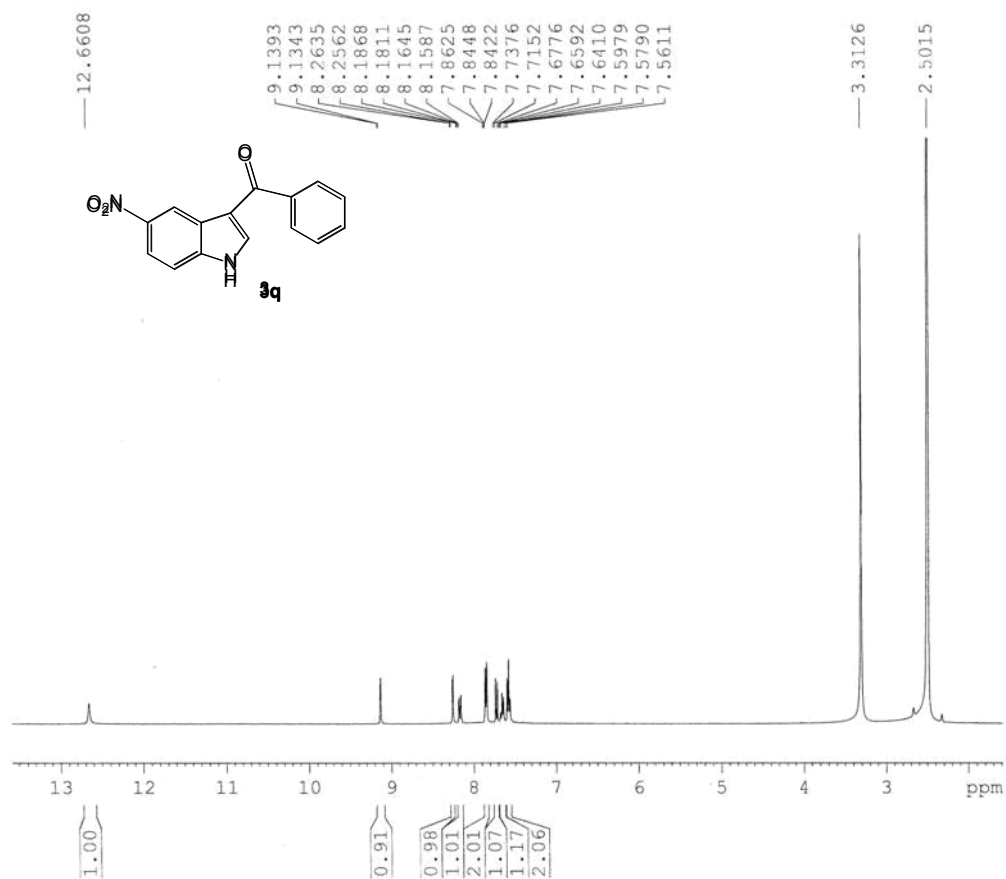
===== CHANNEL f1 =====
 NUC1 1H
 P1 13.80 usec
 PL1 -1.00 dB
 PL1W 13.18669796 W
 SF01 400.1724712 MHz
 SI 32768
 SF 400.1699955 MHz
 WDW EM
 SSB 0
 LB 0.30 Hz
 GB 0
 PC 1.00



NAME DXH-2012-12-14-2-C13
 EXPNO 1
 PROCNO 1
 Date_ 20121218
 Time 10.41
 INSTRUM spect
 PROBHD 5 mm PABBO BB-
 PULPROG zgpg30
 TD 65536
 SOLVENT DMSO
 NS 242
 DS 4
 SWH 24038.461 Hz
 FIDRES 0.366798 Hz
 AQ 1.3631988 sec
 RG 203
 DW 20.800 usec
 DE 6.50 usec
 TE 293.2 K
 D1 2.0000000 sec
 D11 0.0300000 sec
 TD0 1

===== CHANNEL f1 =====
 NUC1 13C
 P1 8.50 usec
 PL1 -2.00 dB
 PL1W 57.32743073 W
 SF01 100.6328888 MHz

===== CHANNEL f2 =====
 CPDPRG2 waltz16
 NUC2 1H
 PCPD2 80.00 usec
 PL2 -1.00 dB
 PL12 14.26 dB
 PL13 14.46 dB
 PL2W 13.18669796 W
 PL12W 0.39276794 W
 PL13W 0.37509048 W
 SF02 400.1716007 MHz
 SI 32768
 SF 100.6228773 MHz
 WDW EM
 SSB 0
 LB 1.00 Hz
 GB 0
 PC 1.40

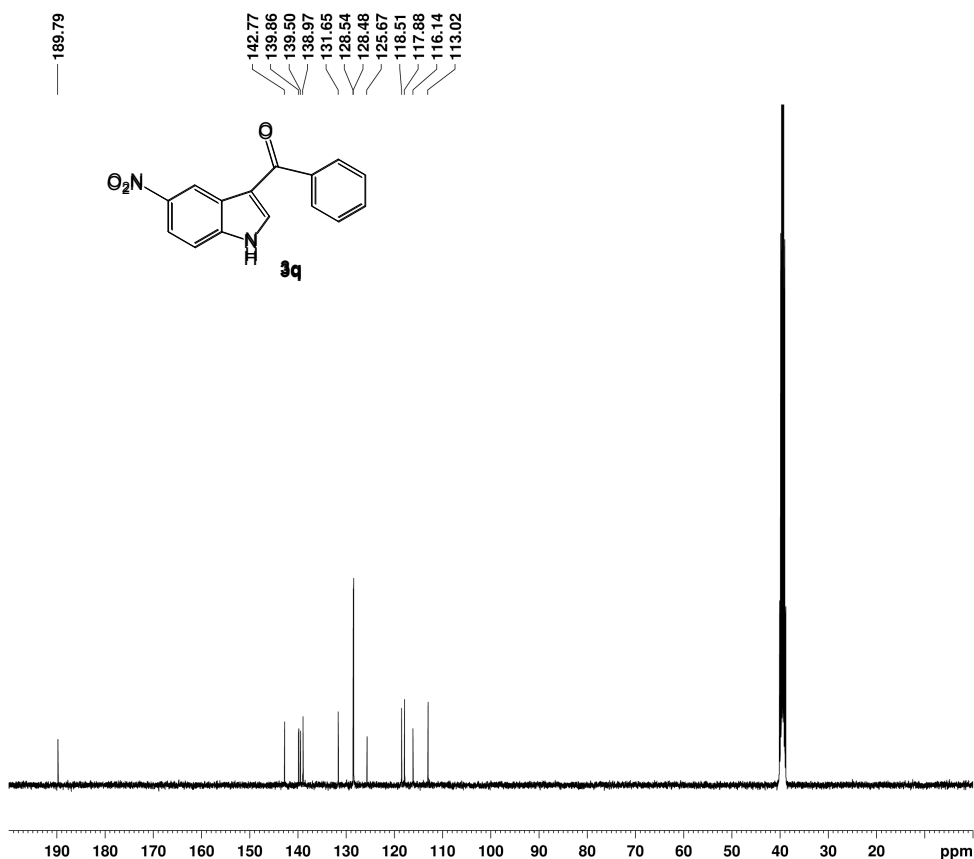


```

NAME      DXH-2012-9-13-1
EXPNO    1
PROCNO   1
Date_    20120913
Time     14.36
INSTRUM  spect
PROBHD   5 mm PABBO BB-
PULPROG  zg30
TD        65536
SOLVENT  DMSO
NS        16
DS        2
SWH       8223.685 Hz
FIDRES    0.125483 Hz
AQ        3.9846387 sec
RG        203
DW        60.800 usec
DE        6.50 usec
TE        300.5 K
D1        1.00000000 sec
TDO       1
    
```

```

===== CHANNEL f1 =====
NUC1      1H
P1        13.80 usec
PL1       -1.00 dB
PL1W      13.18669796 W
SFO1      400.1724712 MHz
SI        32768
SF        400.1699954 MHz
WDW       EM
SSB       0
LB        0.30 Hz
GB        0
PC        1.00
    
```



```

NAME      DXH-2012-12-14-1-C13
EXPNO    1
PROCNO   1
Date_    20121217
Time     19.22
INSTRUM  spect
PROBHD   5 mm PABBO BB-
PULPROG  zgpg30
TD        65536
SOLVENT  DMSO
NS        1000
DS        4
SWH       24038.461 Hz
FIDRES    0.366798 Hz
AQ        1.3631988 sec
RG        203
DW        20.800 usec
DE        6.50 usec
TE        293.4 K
D1        2.00000000 sec
D11      0.03000000 sec
TDO       1
    
```

```

===== CHANNEL f1 =====
NUC1      13C
P1        8.50 usec
PL1       -2.00 dB
PL1W      57.32743073 W
SFO1      100.6328888 MHz
    
```

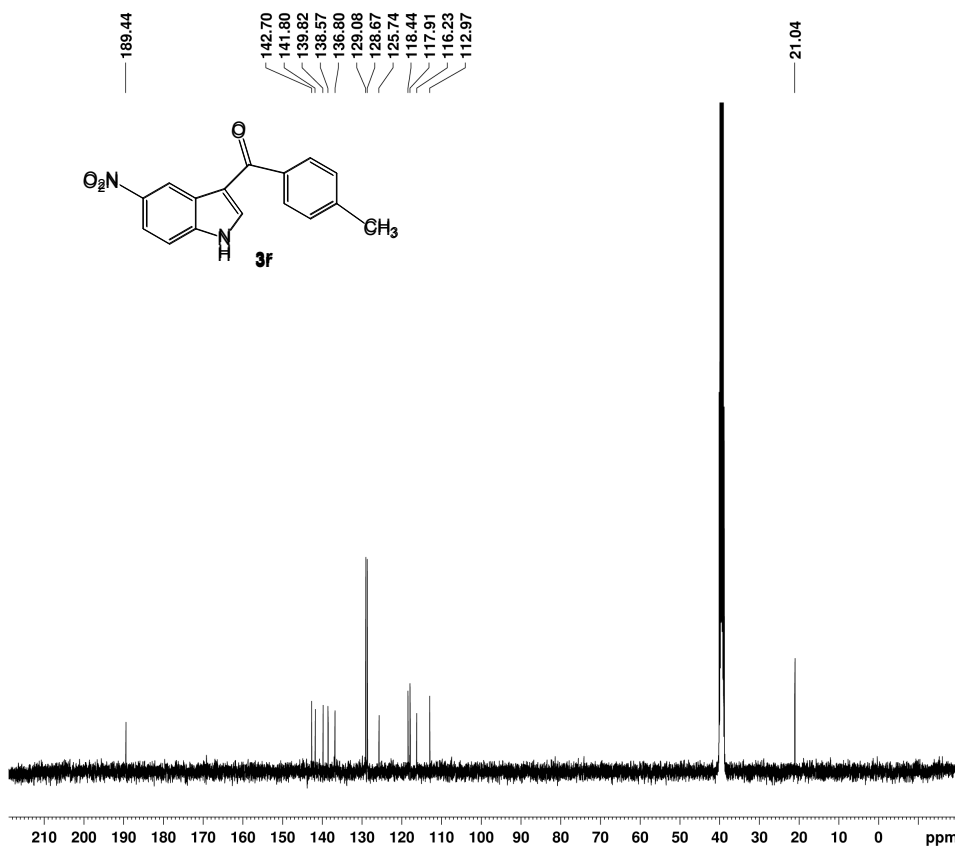
```

===== CHANNEL f2 =====
CPDPRG2  waltz16
NUC2      1H
PCPD2    80.00 usec
PL2       -1.00 dB
PL12     14.26 dB
PL13     14.46 dB
PL2W     13.18669796 W
PL12W    0.39276794 W
PL13W    0.37509048 W
SFO2     400.1716007 MHz
SI        32768
SF        100.6228773 MHz
WDW       EM
SSB       0
LB        1.00 Hz
GB        0
PC        1.40
    
```



NAME DXH-2012-9-13-4
 EXPNO 1
 PROCNO 1
 Date_ 20120913
 Time_ 14.48
 INSTRUM spect
 PROBHD 5 mm PABBO BB-
 PULPROG zg30
 TD 65536
 SOLVENT DMSO
 NS 16
 DS 2
 SWH 8223.685 Hz
 FIDRES 0.125483 Hz
 AQ 3.9846387 sec
 RG 203
 DW 60.800 usec
 DE 6.50 usec
 TE 300.1 K
 D1 1.00000000 sec
 TD0 1

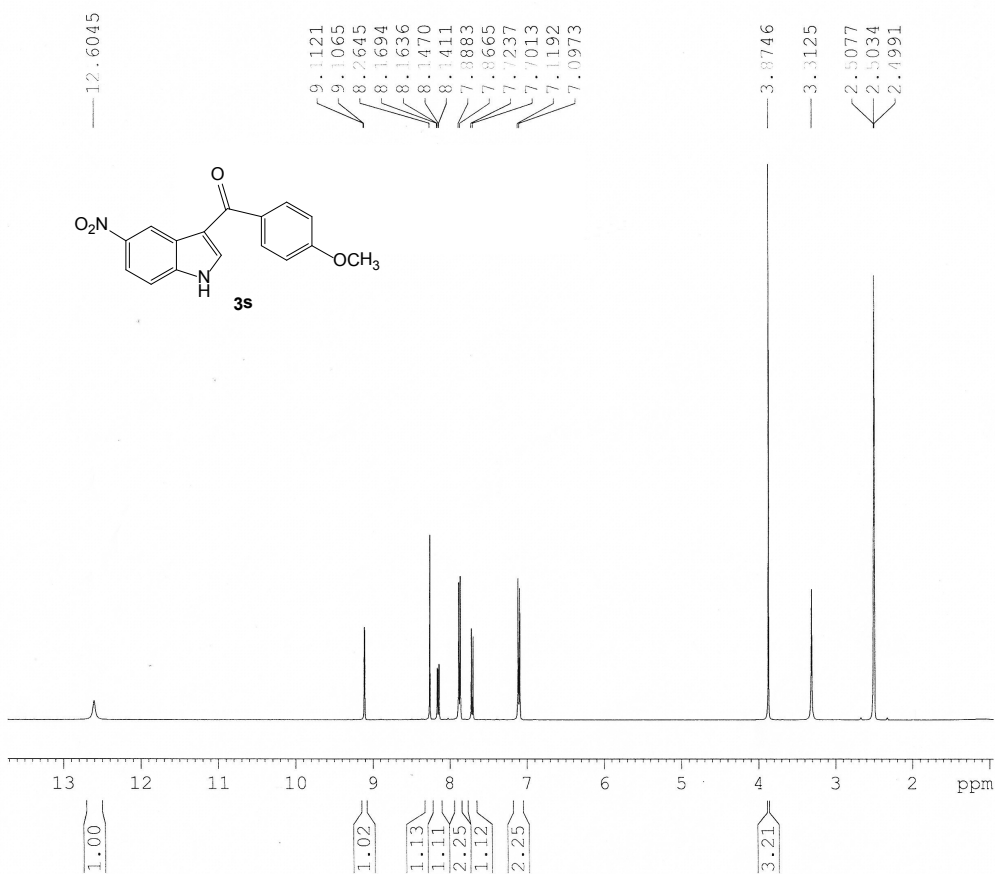
===== CHANNEL f1 =====
 NUC1 1H
 P1 13.80 usec
 PL1 -1.00 dB
 PL1W 13.18669796 W
 SFO1 400.1724712 MHz
 SI 32768
 SF 400.1699950 MHz
 WDW EM
 SSB 0
 LB 0.30 Hz
 GB 0
 PC 1.00



NAME DXH-2012-12-14-3-C13
 EXPNO 1
 PROCNO 1
 Date_ 20121217
 Time_ 21.01
 INSTRUM spect
 PROBHD 5 mm PABBO BB-
 PULPROG zgpg30
 TD 65536
 SOLVENT DMSO
 NS 4
 DS 4
 SWH 24038.461 Hz
 FIDRES 0.366798 Hz
 AQ 1.3631988 sec
 RG 203
 DW 20.800 usec
 DE 6.50 usec
 TE 293.9 K
 D1 2.00000000 sec
 D11 0.03000000 sec
 TD0 1

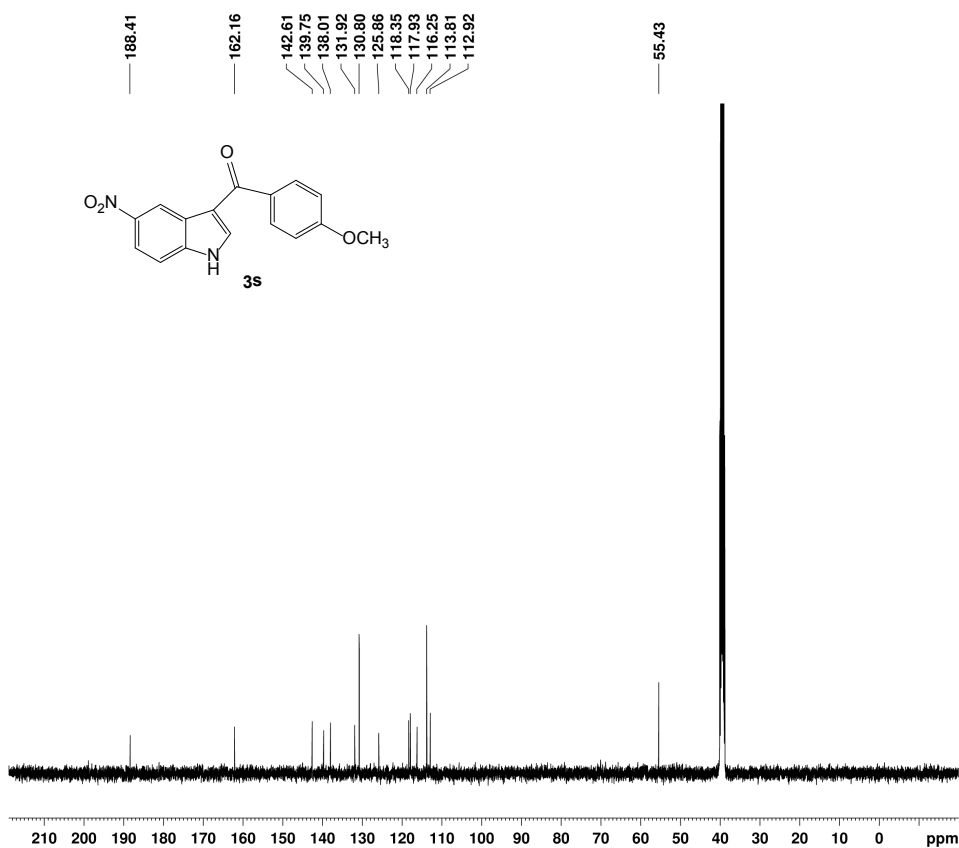
===== CHANNEL f1 =====
 NUC1 13C
 P1 8.50 usec
 PL1 -2.00 dB
 PL1W 57.32743073 W
 SFO1 100.6328888 MHz

===== CHANNEL f2 =====
 CPDPRG2 waltz16
 NUC2 1H
 PCD2 80.00 usec
 PL2 -1.00 dB
 PL12 14.26 dB
 PL13 14.46 dB
 PL2W 13.18669796 W
 PL12W 0.39276794 W
 PL13W 0.37509048 W
 SFO2 400.1716007 MHz
 SI 32768
 SF 100.6228773 MHz
 WDW EM
 SSB 0
 LB 1.00 Hz
 GB 0
 PC 1.40



NAME DXH-2012-9-18-2
 EXPNO 1
 PROCNO 1
 Date_ 20120918
 Time_ 14.45
 INSTRUM spect
 PROBHD 5 mm PABBO BB-
 PULPROG zg30
 TD 65536
 SOLVENT DMSO
 NS 16
 DS 2
 SWH 8223.685 Hz
 FIDRES 0.125483 Hz
 AQ 3.9846387 sec
 RG 203
 DW 60.800 usec
 DE 6.50 usec
 TE 300.4 K
 D1 1.0000000 sec
 TD0 1

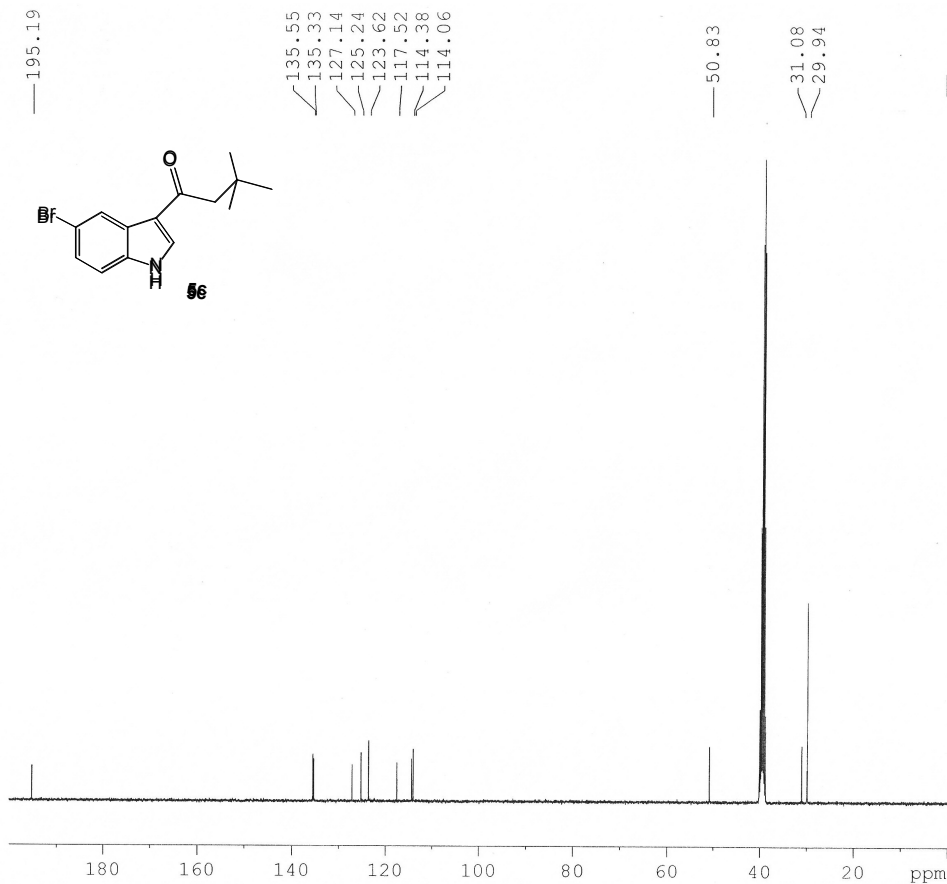
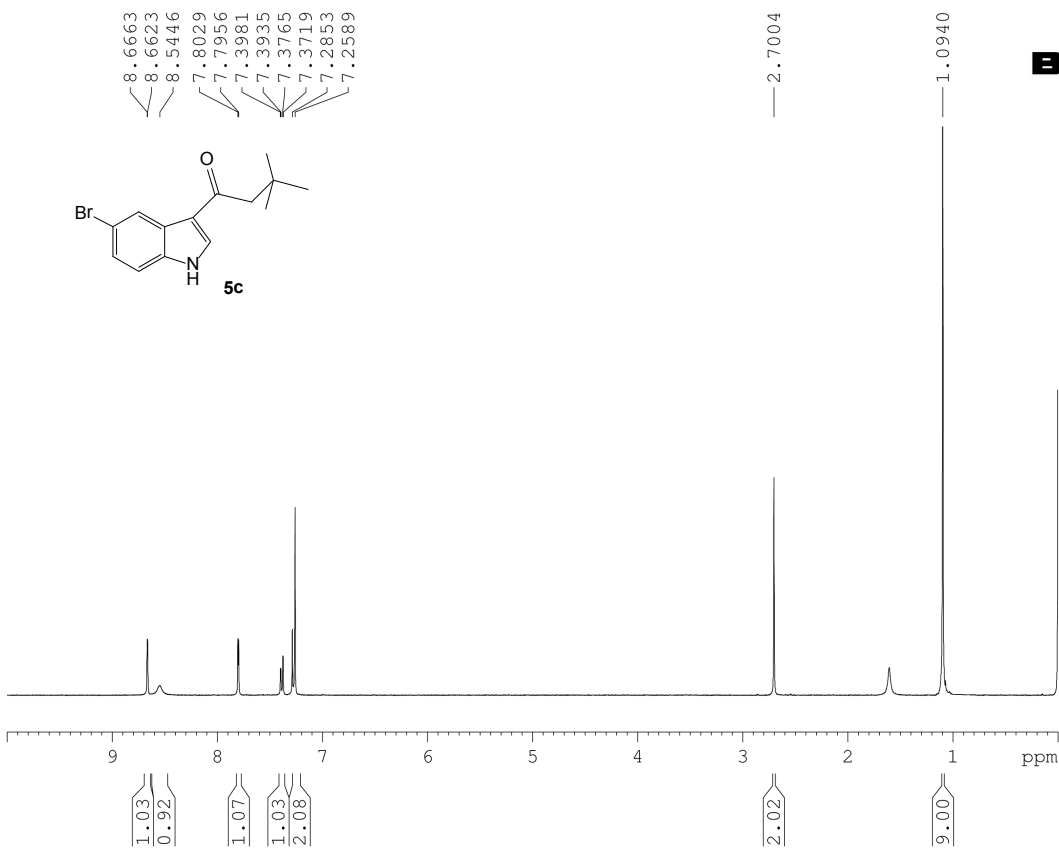
===== CHANNEL f1 =====
 NUC1 1H
 P1 13.80 usec
 PL1 -1.00 dB
 PL1W 13.18669796 W
 SFO1 400.1724712 MHz
 SI 32768
 SF 400.1699943 MHz
 WDW EM
 SSB 0
 LB 0.30 Hz
 GB 0
 FC 1.00



NAME DXH-2012-12-14-5-C13
 EXPNO 1
 PROCNO 1
 Date_ 20121219
 Time_ 13.01
 INSTRUM spect
 PROBHD 5 mm PABBO BB-
 PULPROG zgpg30
 TD 65536
 SOLVENT DMSO
 NS 1000
 DS 4
 SWH 24038.461 Hz
 FIDRES 0.366798 Hz
 AQ 1.3631988 sec
 RG 203
 DW 20.800 usec
 DE 6.50 usec
 TE 293.2 K
 D1 2.0000000 sec
 D11 0.0300000 sec
 TD0 1

===== CHANNEL f1 =====
 NUC1 13C
 P1 8.50 usec
 PL1 -2.00 dB
 PL1W 57.32743073 W
 SFO1 100.6328888 MHz

===== CHANNEL f2 =====
 CPDPRG2 waltz16
 NUC2 1H
 PCPD2 80.00 usec
 PL2 -1.00 dB
 PL12 14.26 dB
 PL13 14.46 dB
 PL2W 13.18669796 W
 PL12W 0.39276794 W
 PL13W 0.37509048 W
 SFO2 400.1716007 MHz
 SI 32768
 SF 100.6228773 MHz
 WDW EM
 SSB 0
 LB 1.00 Hz
 GB 0
 PC 1.40



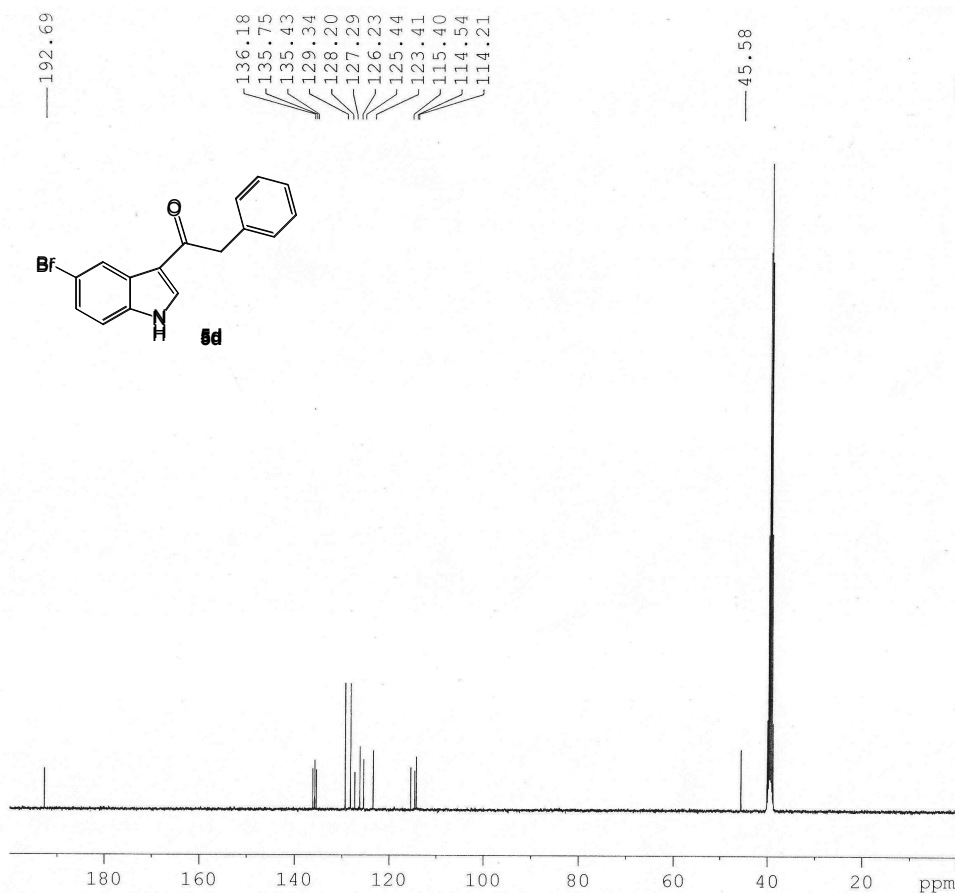


```

NAME          DXH-2012-11-27-3
EXPNO         1
PROCNO        1
Date_         20121127
Time          14.52
INSTRUM       spect
PROBHD        5 mm PABBO BB-
PULPROG       zg30
TD            65536
SOLVENT       CDCl3
NS            16
DS            2
SWH           8223.685 Hz
FIDRES        0.125483 Hz
AQ            3.9846387 sec
RG            203
DW            60.800 usec
DE            6.50 usec
TE            293.3 K
D1            1.0000000 sec
TD0           1
    
```

```

===== CHANNEL f1 =====
NUC1          1H
P1            13.80 usec
PL1           -1.00 dB
PL1W          13.18669796 W
SFO1          400.1724712 MHz
SI            32768
SF            400.1700029 MHz
WDW           EM
SSB           0
LB            0.30 Hz
GB            0
PC            1.00
    
```



```

NAME          DXH-2012-12-20-3-c13
EXPNO         1
PROCNO        1
Date_         20121228
Time          14.36
INSTRUM       spect
PROBHD        5 mm PABBO BB-
PULPROG       zgpg30
TD            65536
SOLVENT       DMSO
NS            1390
DS            4
SWH           24038.461 Hz
FIDRES        0.366798 Hz
AQ            1.3631988 sec
RG            203
DW            20.800 usec
DE            6.50 usec
TE            293.4 K
D1            2.0000000 sec
D11           0.0300000 sec
TD0           1
    
```

```

===== CHANNEL f1 =====
NUC1          13C
P1            8.50 usec
PL1           -2.00 dB
PL1W          57.32743073 W
SFO1          100.6328888 MHz
    
```

```

===== CHANNEL f2 =====
CPDPRG2       waltz16
NUC2          1H
PCPD2         80.00 usec
PL2           -1.00 dB
PL12          14.26 dB
PL13          14.46 dB
PL2W          13.18669796 W
PL12W         0.39276794 W
PL13W         0.37509048 W
SFO2          400.1716007 MHz
SI            32768
SF            100.6228773 MHz
WDW           EM
SSB           0
LB            1.00 Hz
GB            0
PC            1.40
    
```