

## Supporting Information

A thin empty-shell bismuth tungstate hierarchical structure  
constructed by acid sculpture effect and improved visible-light  
photocatalytic activity

Chunmei Li<sup>a</sup>, Gang Chen<sup>a, \*</sup>, Jingxue Sun<sup>a, \*</sup>, Yujie Feng<sup>b</sup>, Hongjun Dong<sup>a, c</sup>, Zhonghui Han<sup>a</sup>,

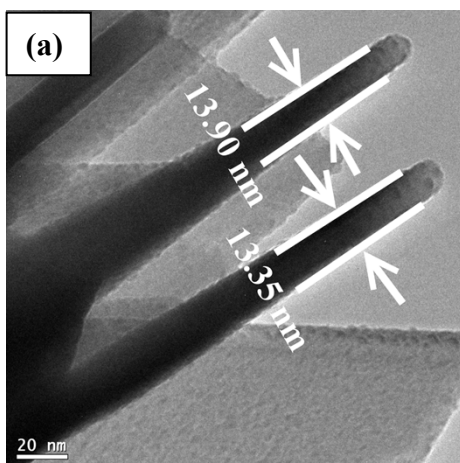
Yidong Hu<sup>a</sup> and Chade Lv<sup>a</sup>

<sup>a</sup> Department of Chemistry, Harbin Institute of Technology, Harbin 150001, P. R. China

<sup>b</sup> School of municipal and environmental engineering, Harbin Institute of Technology, Harbin 150001, P. R. China

<sup>c</sup> Department of Chemistry, Baicheng Normal University, Baicheng 137000, P. R. China

\*Corresponding author: E-mail: gchen@hit.edu.cn, jxsun@hit.edu.cn, Fax: (+86)-451-86413753.



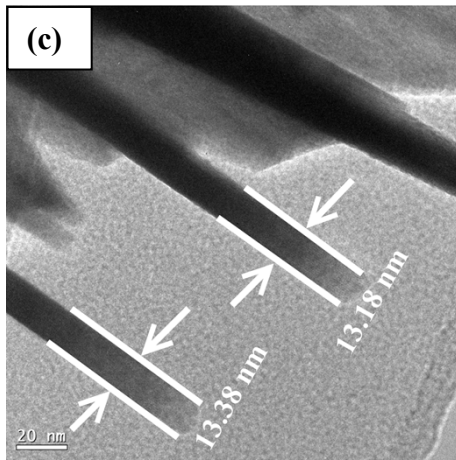
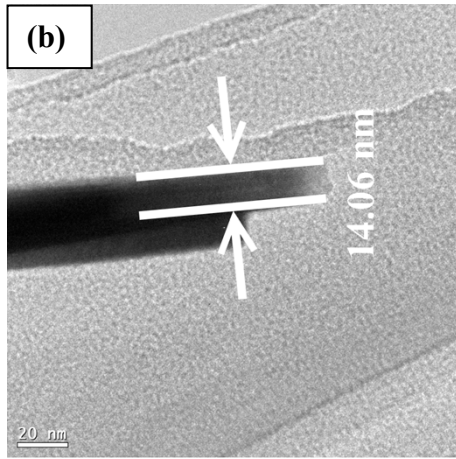


Fig.S1 The TEM images of TES-Bi<sub>2</sub>WO<sub>6</sub> sample with different angles.