

Supporting Materials

Giant Magnetoresistive Graphene with Negative Permittivity

Jiahua Zhu,^a Suying Wei,^{b,*} Neel Haldolaarachchige,^c Jun He,^d David P. Young,^c and Zhanhu Guo^{*,a}

^aIntegrated Composites Laboratory (ICL)
Dan F Smith Department of Chemical Engineering
Lamar University, Beaumont, Texas 77710, USA
Tel: (409) 880-7654; E-mail: zhanhu.guo@lamar.edu

^bDepartment of Chemistry and Biochemistry
Lamar University, Beaumont, Texas 77710, USA
Tel: (409) 880-7976; E-mail: suying.wei@lamar.edu

^cDepartment of Physics and Astronomy
Louisiana State University, Baton Rouge, Louisiana 70803, USA

^dNational Center for Nanoscience and Technology, Beijing 100190, China

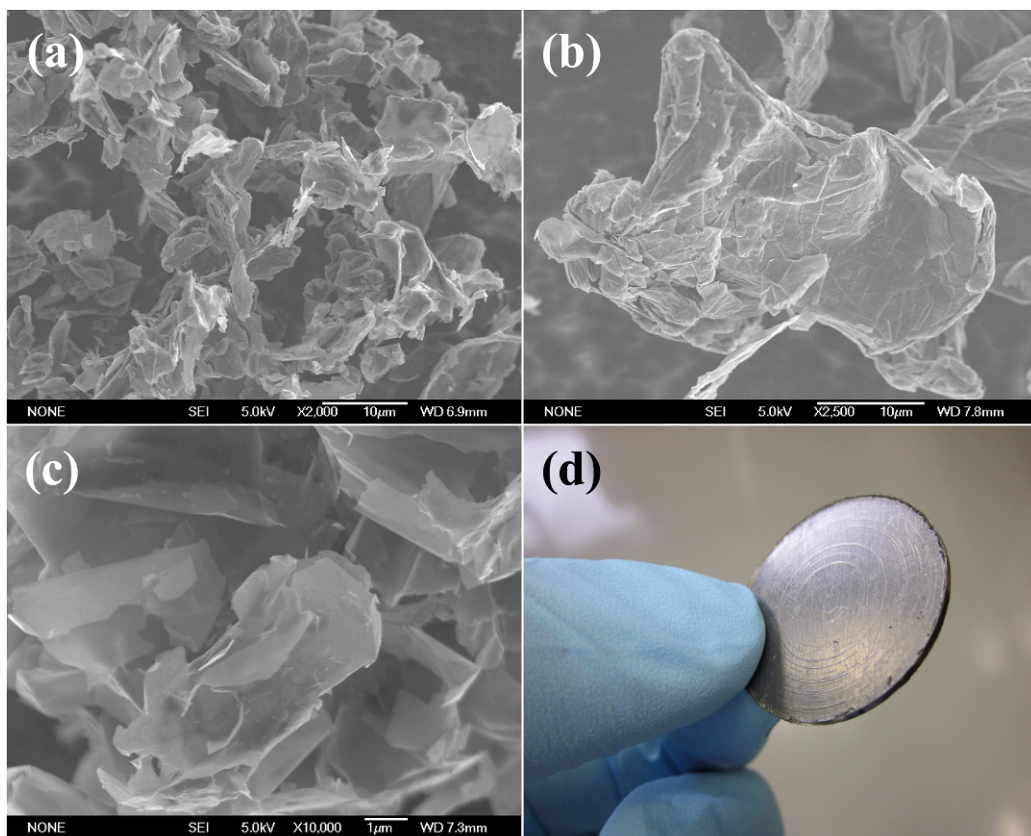


Figure S1. SEM images of (a) Gra-10, (b) Gra-40, (c) Gra-P and (d) photograph of the sample dimension.

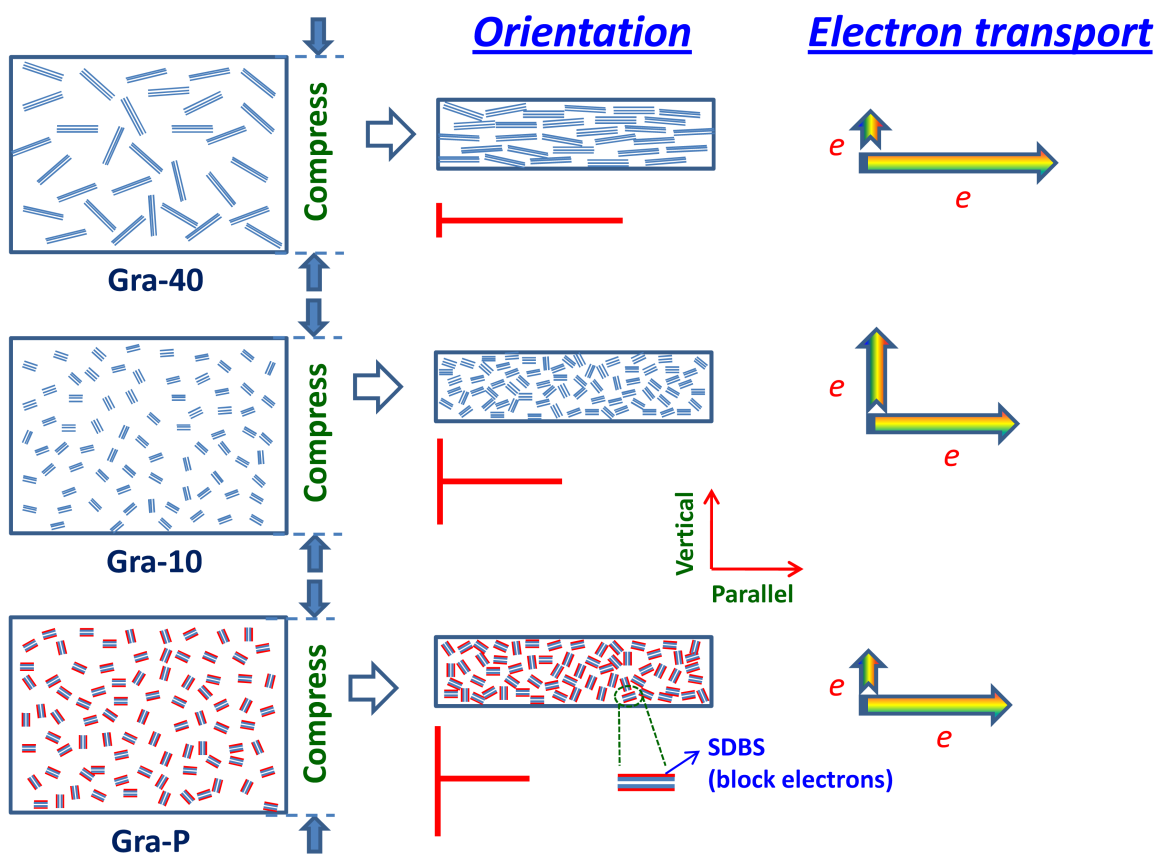


Figure S2. The different-sized graphene sheets orientation after compression and its electron transportation along parallel and vertical directions. (SDBS is the surfactant used during fabrication)