

Supporting Information

Fig. S1 shows a STEM cross-sectional image of the of the pure Au implanted sample, over a wider area than the one shown in Fig 3(b). The nanoparticles (the darker dots in the image) are all within 30-40 nm of the surface. We suggest the other smaller lighter dots are denser regions of the glass sample, likely indicating that melting and rapid solidification has occurred, in line with the simulation.

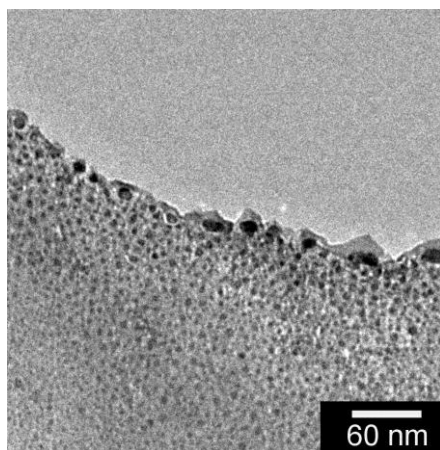


Fig. S1 A wider area STEM cross-sectional image of the of the pure Au implanted sample shown in Fig. S1. It is clear that the metal nanoparticles are located just underneath the surface of the sample.