

Supplementary data

Towards Directional Assembly of Hierarchical Structures: Aniline

Oligomers as the Model Precursors

Yanchai Zhao,^{a, b, c} Jaroslav Stejskal,^d and Jixiao Wang^{a, b, c *}

^a *Chemical Engineering Research Center, School of Chemical Engineering and Technology, Tianjin University, Tianjin 300072, P. R. China*

^b *State Key Laboratory of Chemical Engineering, Tianjin University, Tianjin 300072, P. R. China*

^c *Tianjin Key Laboratory of Membrane Science and Desalination Technology, Tianjin University, Tianjin 300072, P. R. China*

^d *Institute of Macromolecular Chemistry, Academy of Sciences of the Czech Republic, Heyrovsky Sq. 2, 162 06 Prague 6, Czech Republic*

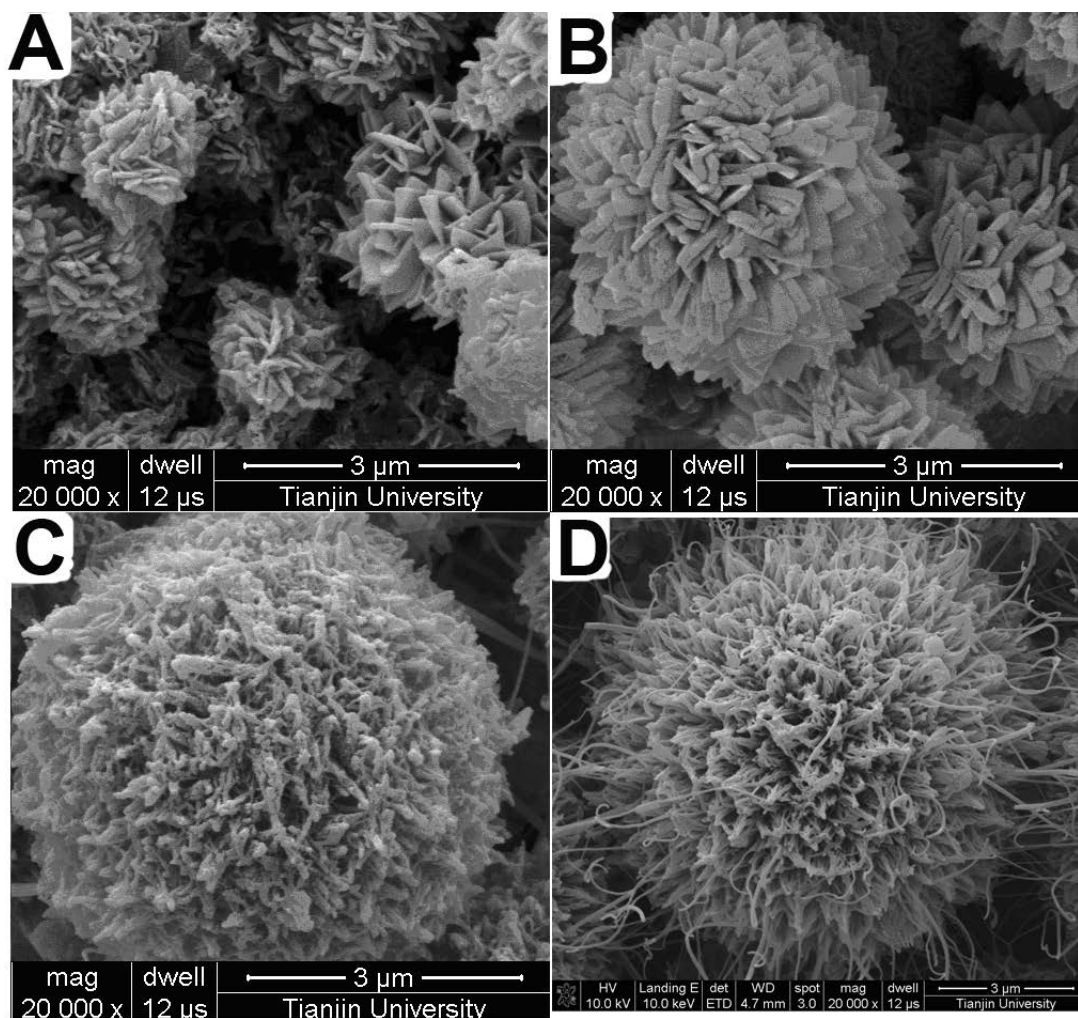


Fig. S1 SEM images of aniline oligomer microstructures obtained at different reaction times: (A) 20 min, (B) 40min, (C) 2 h, (D) 4h.