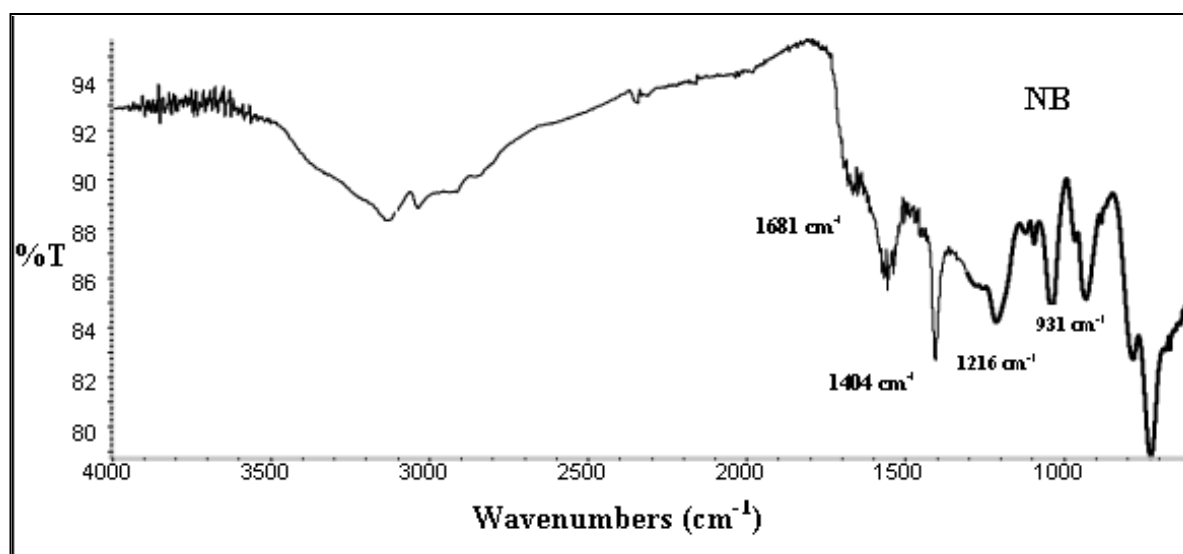
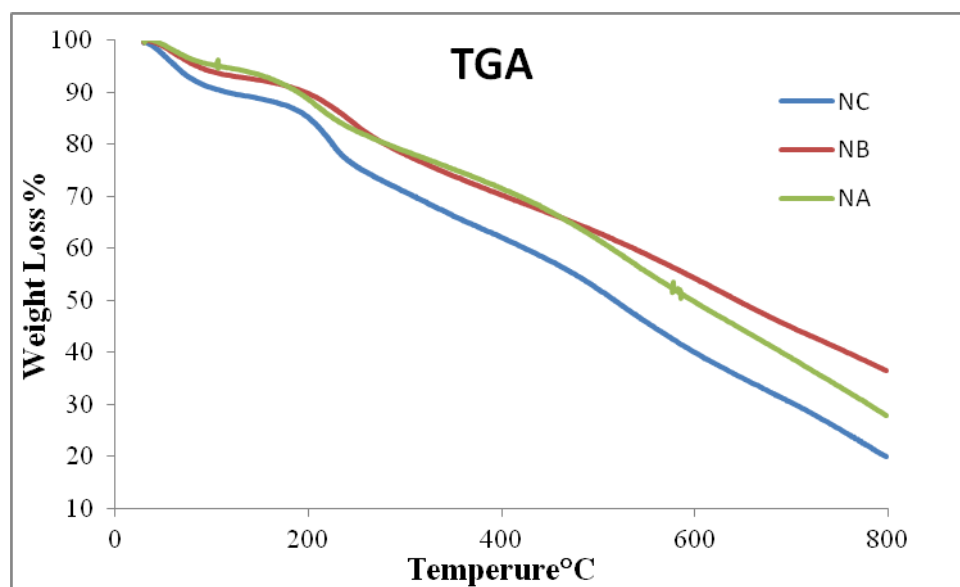


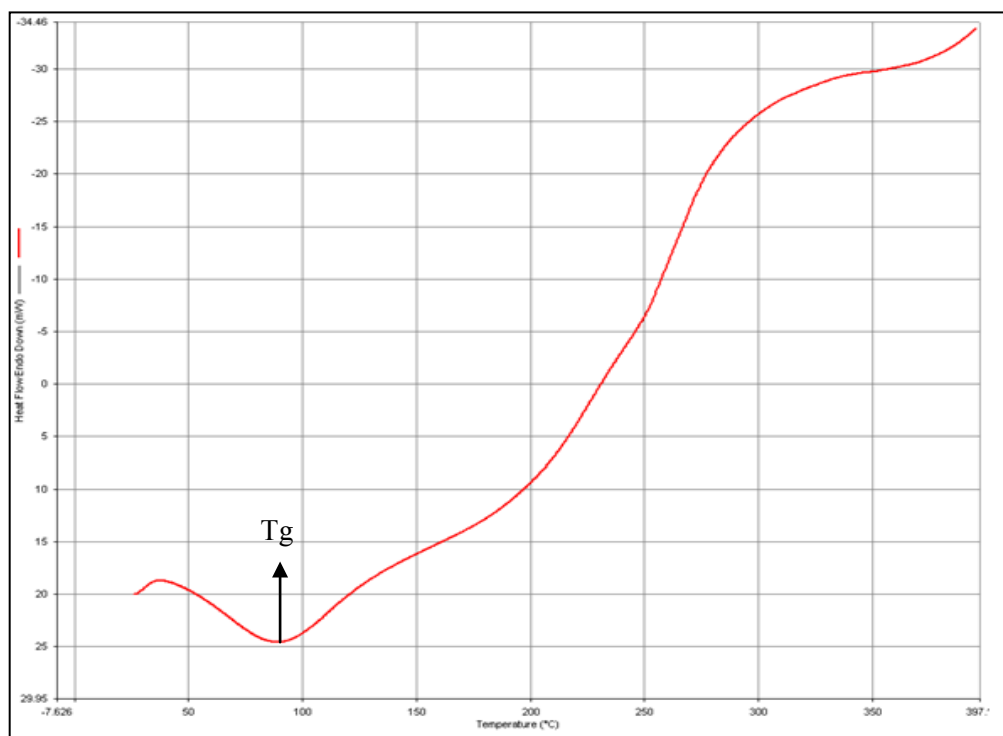
Supporting Information



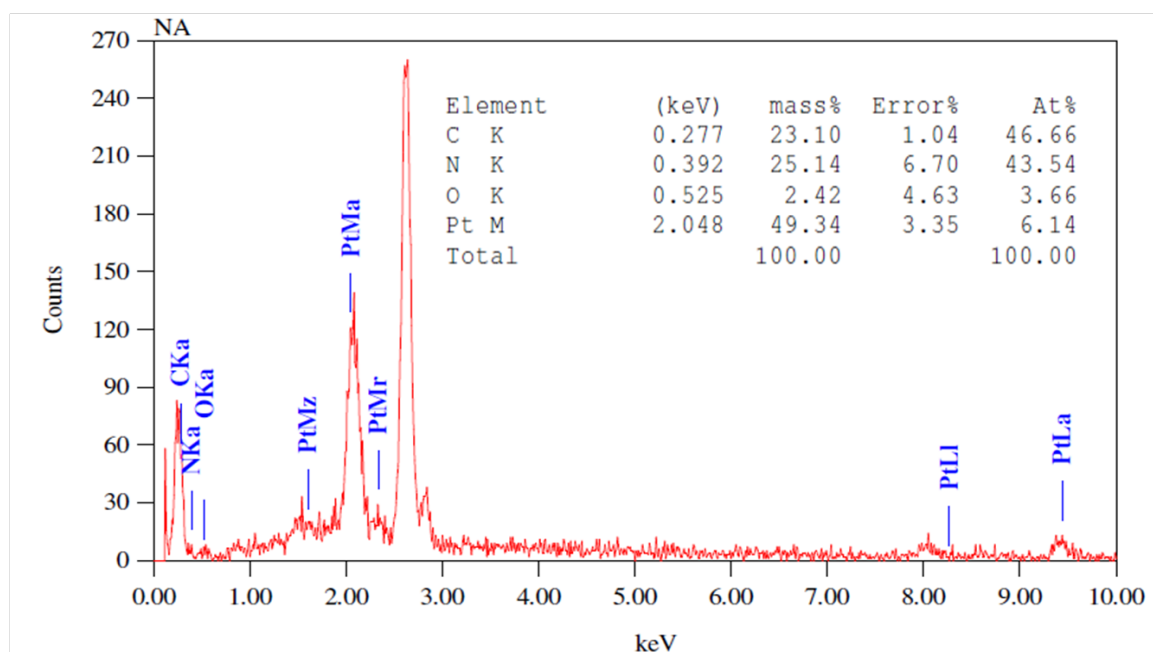
ESI. Fig. 1. FT-IR spectra of Pt/PPy nanocomposite prepared at 150°C depicted as NB.



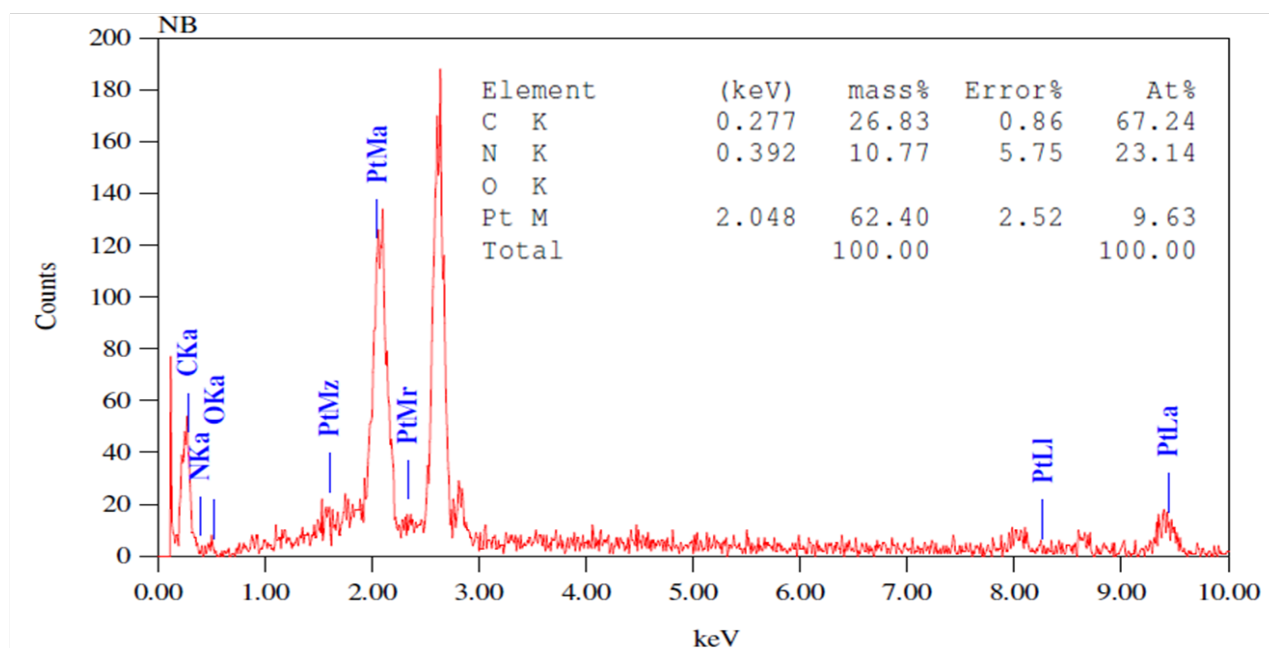
ESI. Fig. 2. TGA of the Pt/PPy nanocomposite; prepared at 100°C (NA), prepared at 150°C (NB) and prepared at 200°C (NC)



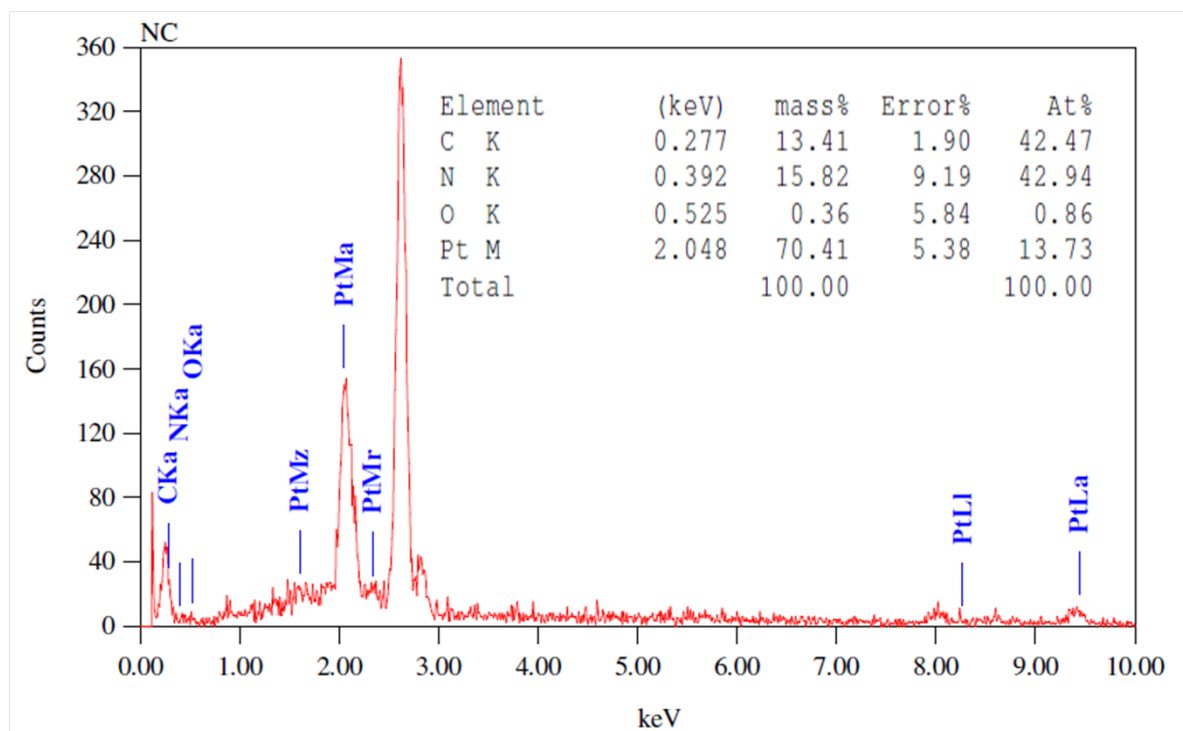
ESI. Fig. 3. DSC profile of the Pt/PPy nanocomposite prepared at 150°C (NB).



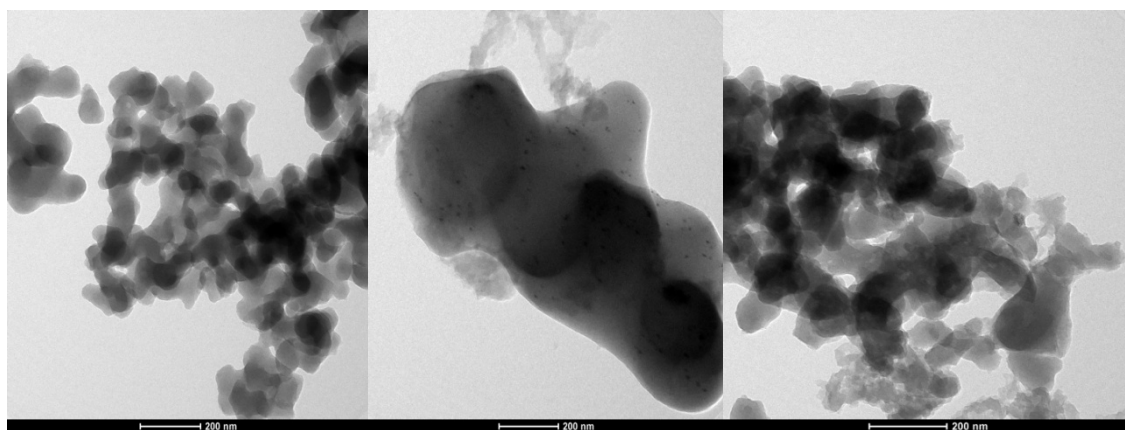
ESI. Fig. 4. Elemental analysis of sample NA by EDAX; the atomic % of Pt is about 6% in the sample.



ESI. Fig. 5. Elemental analysis of sample NB by EDAX; the atomic % of Pt is about 9.6% in the sample.



ESI. Fig. 6. Elemental analysis of sample NC by EDAX; the atomic % of Pt is about 13.7% in the sample.



ESI. Fig. 7. TEM images of sample prepared at 100°C (A); 150°C (B) and 200°C (C) of Pt/PPy nano-composite; (scale bar is 200 nm for all the images)