

Electronic supplementary information (ESI)

A mild route to mesoporous Mo₂C/C hybrid nanospheres for high performance lithium-ion batteries

Qing Gao^a, Xinyu Zhao^a, Ying Xiao^a, Di Zhao^a, Minhua Cao^{*,a,b}

Key Laboratory of Cluster Science, Ministry of Education of China, Beijing Key Laboratory of Photoelectronic/Electrophotonic Conversion Materials Department of Chemistry, Beijing Institute of Technology, Beijing 100081, P. R. China.

Fig. S1 FE-SEM images of the bulk Mo₂C.

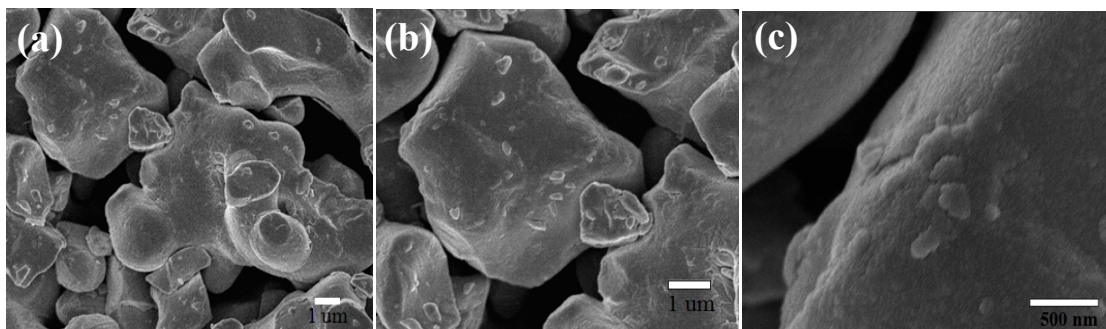


Fig. S2 (a) XRD patterns and (b) XPS spectrum of the Mo₂C/C electrode after the fourth discharge.

