

Supporting information

Biomimetic synthesis of metal oxides for the extraction of nanoparticles from water

Ramakrishna Mallampati and Suresh Valiyaveetil*

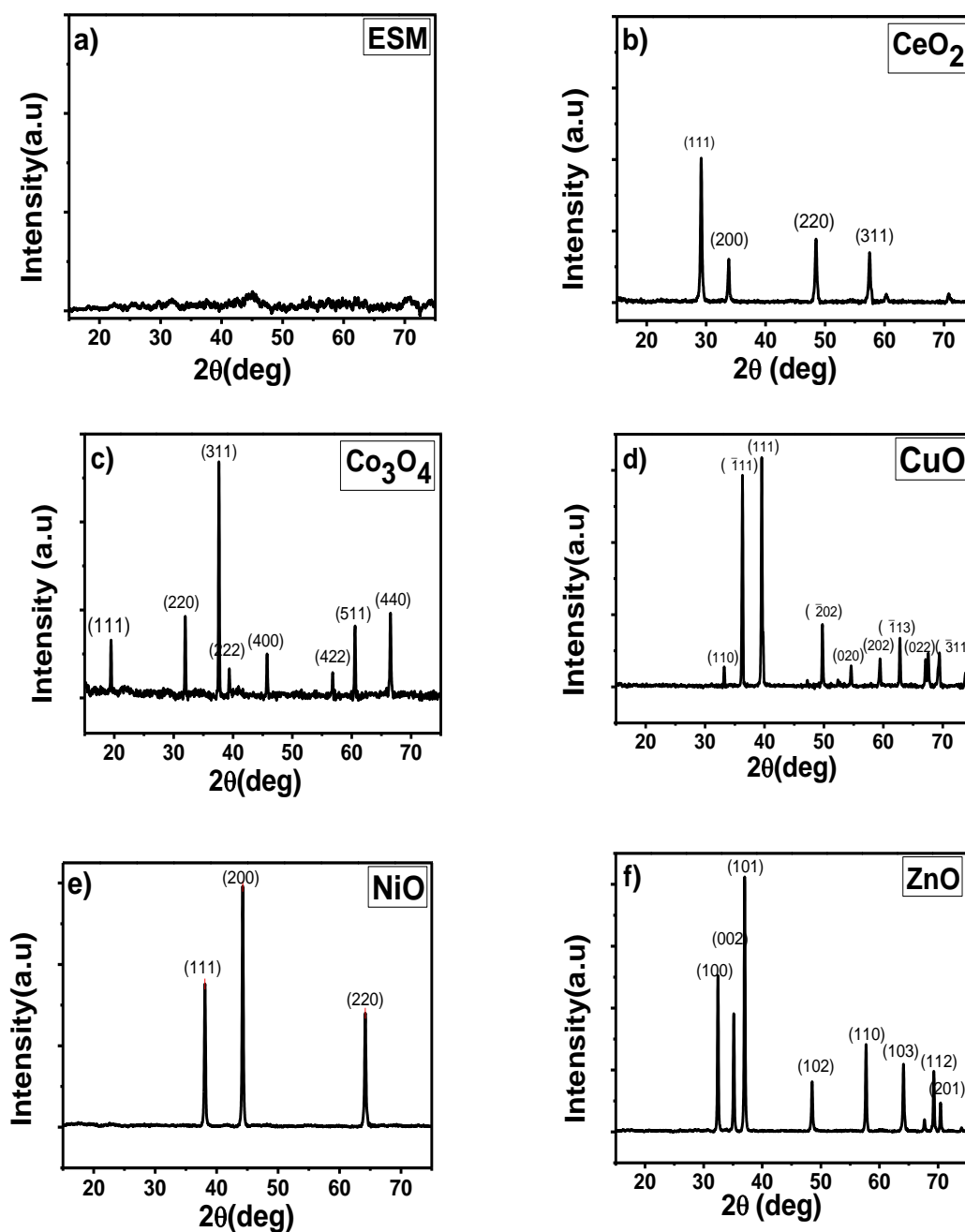


Figure S1. X-ray diffraction pattern of a) natural ESM, b) CeO_2 , c) Co_3O_4 , d) CuO , e) NiO and f) ZnO

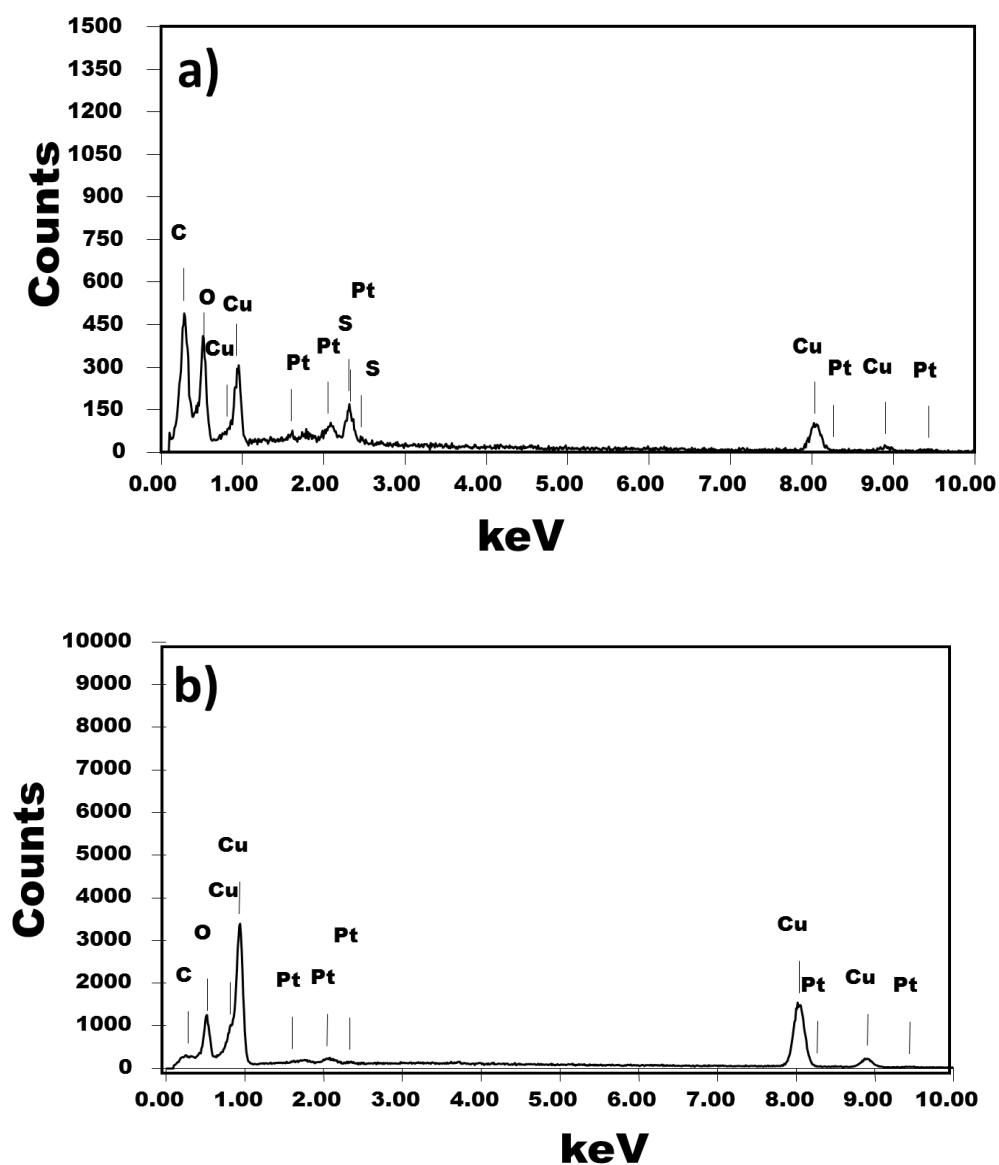


Figure S2. EDX analysis of ESM copper composite a) before calcination and b) after calcination

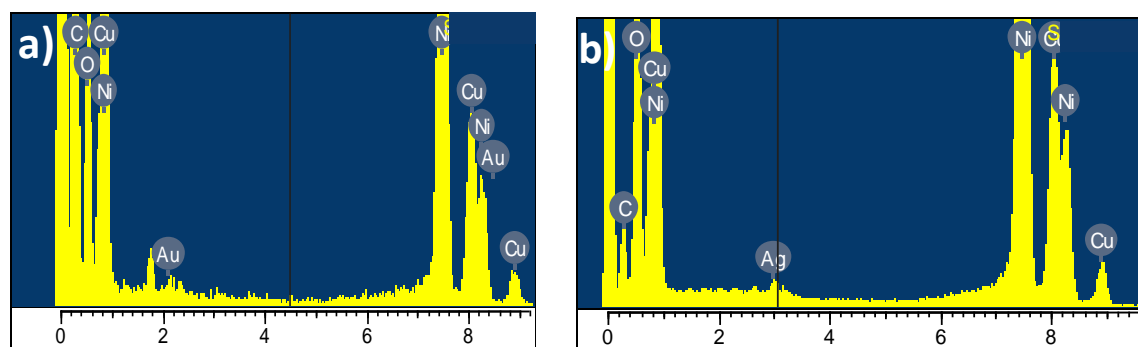


Figure S3. EDX analysis of a) Au NPs on NiO surface and b) Ag NPs on NiO surface

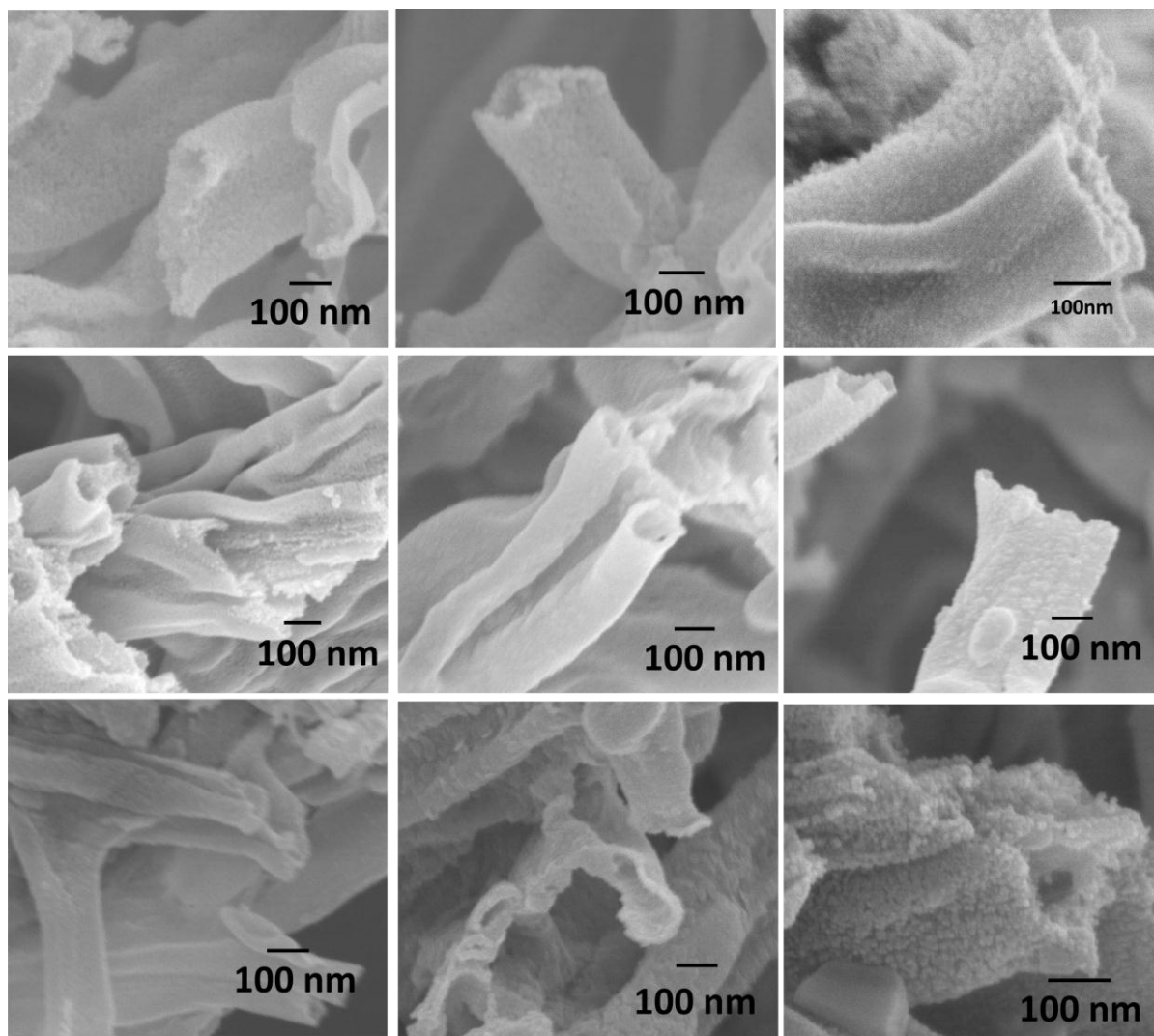


Figure S4. SEM images of NiO showing tube like structures