

Electronic Supplementary Information (ESI)

Controlled Synthesis, Asymmetrical Transport Behavior and Luminescence Properties of Lanthanide Doped ZnO Mushroom-like 3D Hierarchical Structures

Dan Yue,^{‡, a,b} Wei Lu,^{‡, c} Lin Jin,^a Chunyang Li,^a Wen Luo,^a Mengnan Wang,^{a,b} Zhenling Wang*^a and Jianhua Hao*^c

^a The Key Laboratory of Rare Earth Functional Materials and Applications, Zhoukou Normal University, Zhoukou 466001, P. R. China

^b The College of Chemistry and Molecular Engineering, Zhengzhou University, Zhengzhou 450001, P. R. China

^c Department of Applied Physics and Materials Research Center, The Hong Kong Polytechnic University, Hong Kong, P. R. China

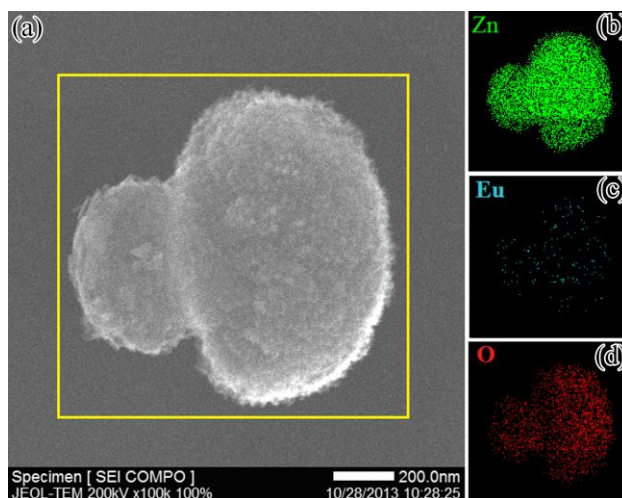


Figure S1. (a) STEM-SEI image of an individual ZnO: Eu³⁺ mushroom. (b)~(d) EDS elemental mapping for Zn, Eu and O of the individual mushroom shown in (a), respectively.