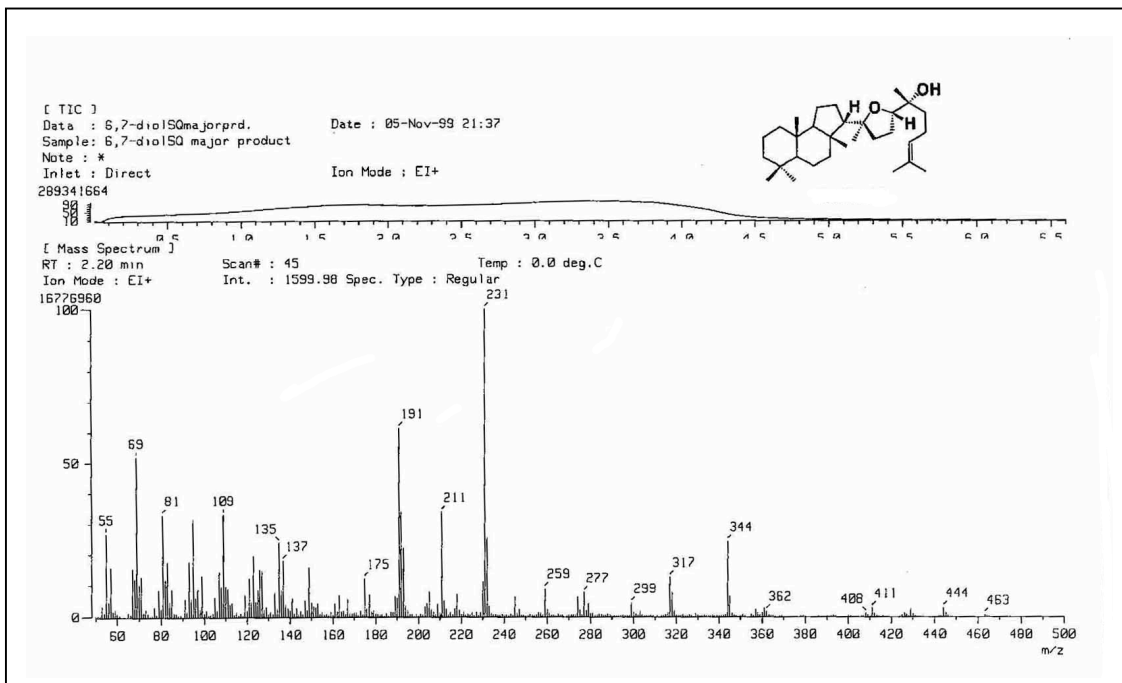


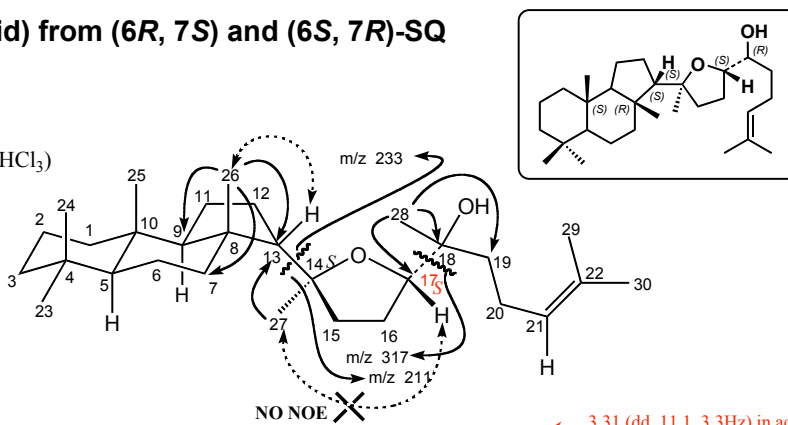
Product 36



Product 36 (solid) from (6R, 7S) and (6S, 7R)-SQ diols

$[\alpha]_D^{25} = +29.5^\circ$ (c 0.78, CHCl₃)

HREIMS: m/z (M+), calcd. for C₃₀H₅₂O₂, 444.3967; found, 444.3974.



600 MHz

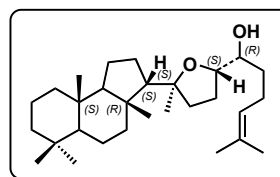
NMR data in C₆D₆, solvent peak : ¹H; 7.28 ppm, ¹³C; 128.0 ppm

NO.	¹ H	¹³ C	NO.	¹ H	¹³ C	NO.	¹ H	¹³ C	NO.	¹ H	¹³ C
1	1.20(m); 1.68(m)	41.25	9	1.68(m)	60.28	17	3.27 (very broad)	73.74	25	1.032 (3H, s)	16.77
2	1.54(m); 1.78(m)	19.05	10	—	37.46	18	—	76.01	26	1.100 (3H, s)	27.32
3	1.40(m); 1.56(m)	42.79	11	1.44(m); 1.71(m)	22.13	19	1.63; 1.89 (dt, 5.3; 12.9Hz)	43.00	27	1.371 (bs, decreased signal intensity)	26.38(#)
4	—	33.21	12	1.73 (2H, m)	30.25	20	2.41(m); 2.54(m)	22.35	28	1.271 (3H, s)	19.66(#)
5	1.17(m)	56.97	13	1.46(m)	61.95(#)	21	5.45 (t, 7.0Hz)	126.21	29	1.825 (3H, s)	18.11
6	1.59(m); 1.80(m)	20.43	14	—	76.38	22	—	130.72	30	1.846 (3H, s)	25.84
7	1.99 (2H, very broad)	38.94(#)	15	1.70 (2H, m)	34.10(#)	23	1.066 (3H, s)	33.78	OH	3.83 (brs) in acetone-d ₆	
8	—	45.26(#)	16	1.45(m); 1.70(m)	25.13(#)	24	1.014 (3H, s)	21.50			

The blue-colored signals were very small or did not appear.

The assignments of C-11 and C-12 are exchangeable.

Product 36 (solid) from (6R, 7S) and (6S, 7R)-SQ diols in Acetone-d₆



$[\alpha]_D^{25} = +29.5^\circ$ (*c* 0.78, CHCl₃)

HREIMS: *m/z* (M⁺), calcd. for C₃₀H₅₂O₂, 444.3967; found, 444.3974.

→ HMBC
 ← NOE

600 MHz

NMR data in acetone-d₆, solvent peak : ¹H; 2.04 ppm, ¹³C; 29.80 ppm

NO.	¹ H	¹³ C	NO.	¹ H	¹³ C	NO.	¹ H	¹³ C	NO.	¹ H	¹³ C
1	0.97(m); 1.47 (m)	41.53	9	1.52 (m)	60.56	17	3.31 (dd, 11.1, 3.3Hz)	73.59	25	0.832 (3H, s)	16.86
2	1.35(m); 1.62 (m)	19.24	10	—	37.82	18	—	76.72	26	0.920 (3H, s)	27.37
3	1.13(m); 1.33(m)	43.09	11	1.24(m); 1.42(m)	22.35#	19	1.42(m); 1.67(m)	43.37	27	1.324 (s); very small signal	27.10#
4	—	33.53	12	1.63(m); 1.72 (m)	26.50#	20	2.23(m); 2.13 (m)	22.56	28	1.153 (3H, s)	20.24
5	0.92 (m)	57.29	13	1.38 (m)	62.50#	21	5.11 (bt, 6.8 Hz)	126.7	29	1.620(3H, s)	18.09
6	1.43 (m); 1.58(m)	20.25	14	—	76.89	22	—	130.9	30	1.647 (3H, s)	25.81
7	1.79 (2H, m)	39.30#	15	1.70 (2H, m)	34.12#	23	0.823(3H, s)	33.84	OH	3.83 (brs)	
8	—	45.64#	16	1.55(m); 1.62(m)	25.46#	24	0.807 (3H, s)	21.54			

The blue-colored signals were very small or did not appear. The assignment of C-11 and C-12 is exchangeable.