

**Supplementary information: ^1H NMR of new compounds for
proof of purity**

For manuscript entitled:

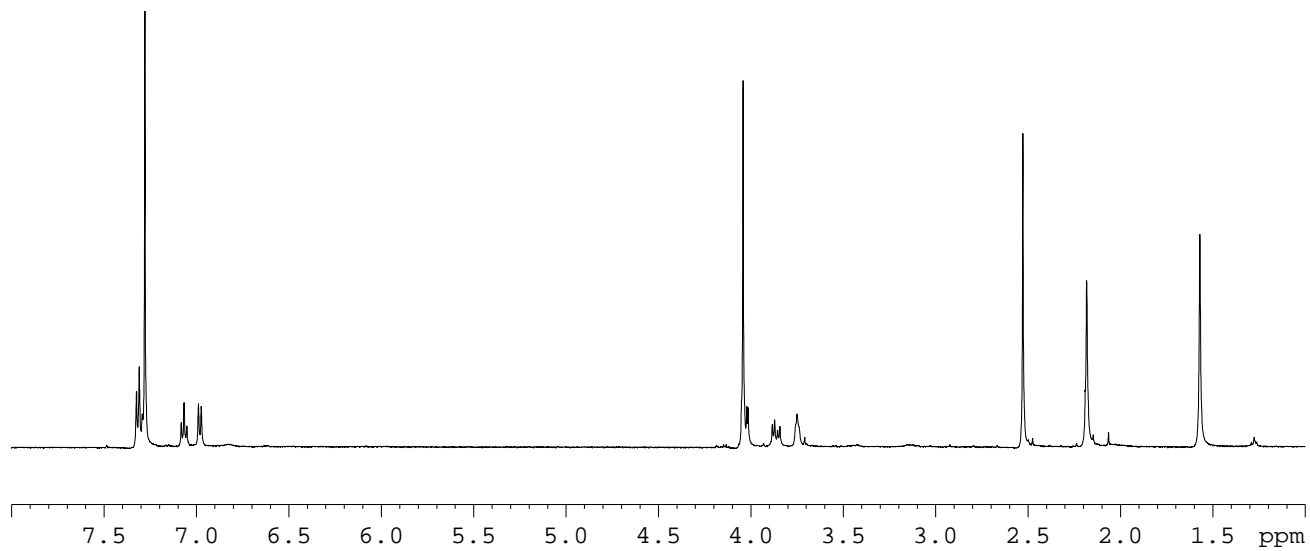
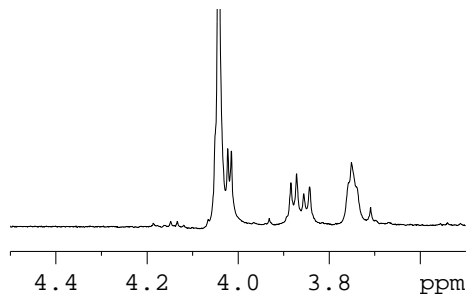
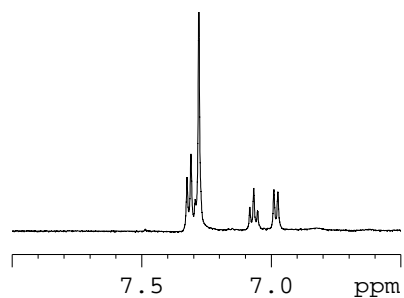
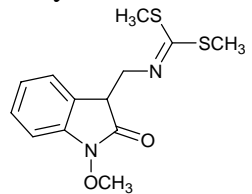
**Metabolism of the crucifer phytoalexins wasalexins A and B in the plant
pathogenic fungus *Leptosphaeria maculans***

M. Soledade C. Pedras* and Mojmír Suchý

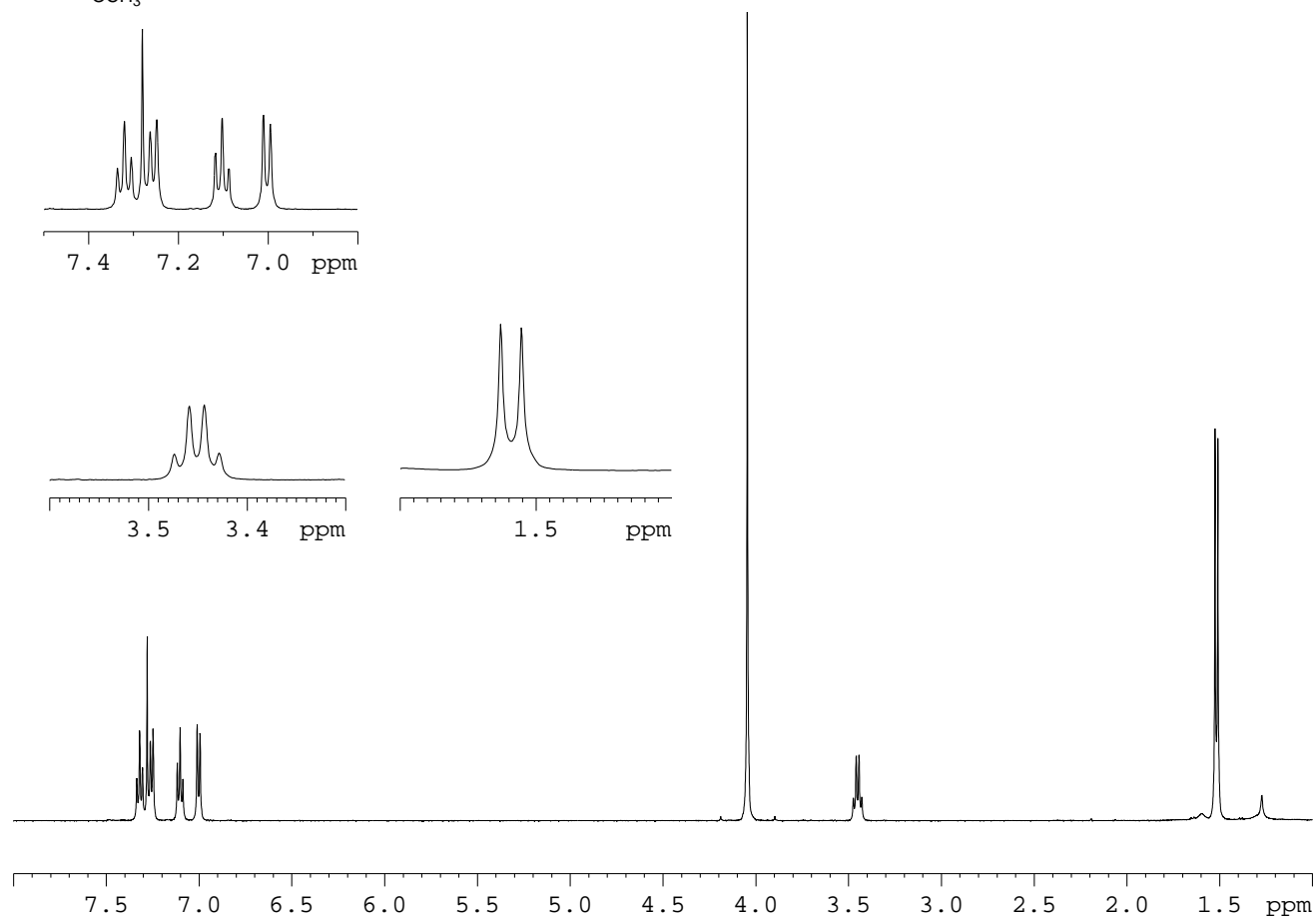
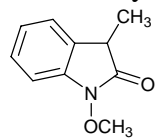
Department of Chemistry, University of Saskatchewan, 110 Science Place,
Saskatoon, SK, S7N 5C9, Canada

Corresponding author:
M. Soledade C. Pedras*
Email: s.pedras@usask.ca;
telephone: 1-(306) 966-4772;
fax: 1-(306) 966-4730

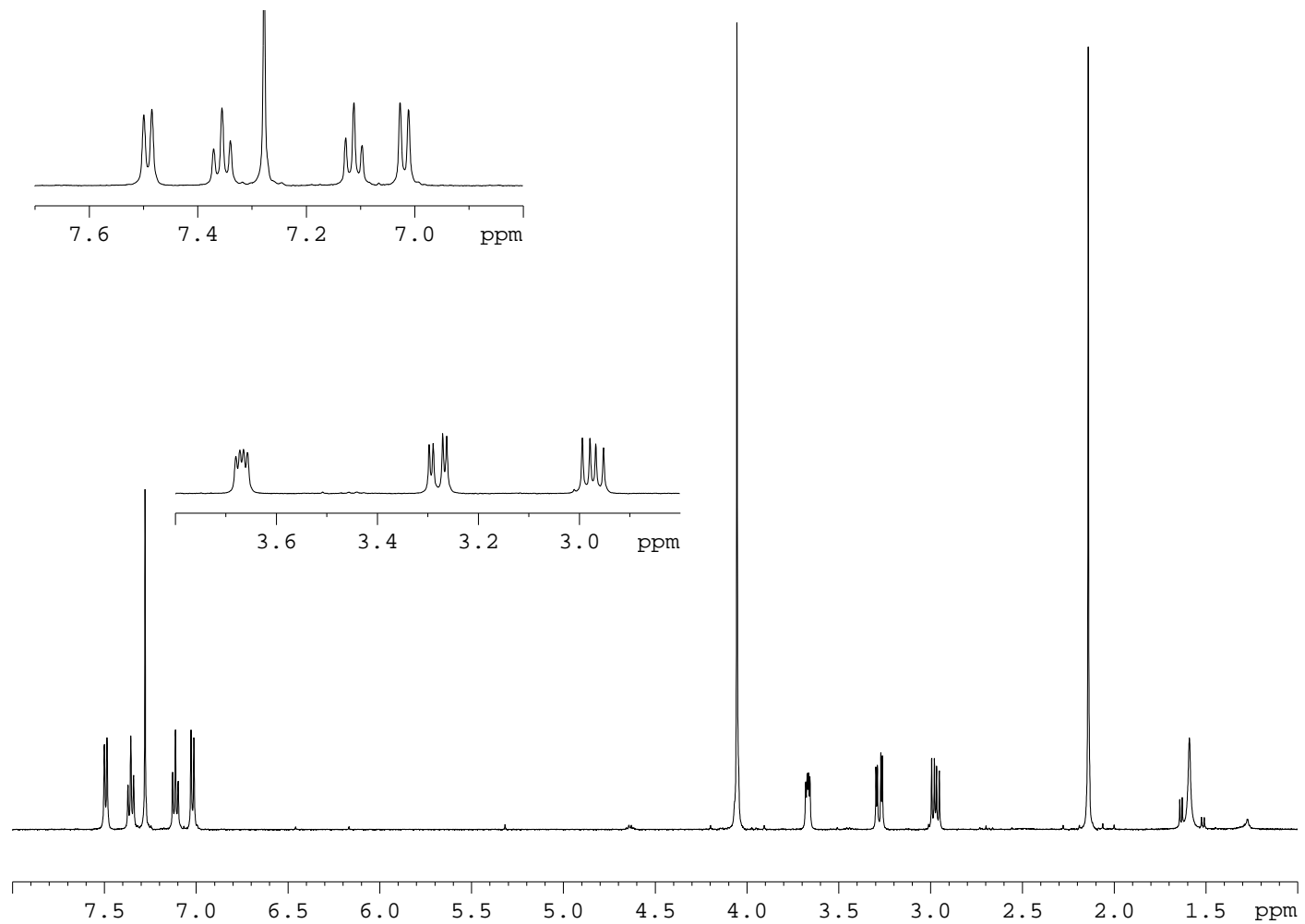
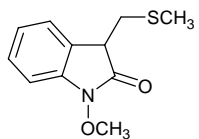
Dihydrowasalexin (7)



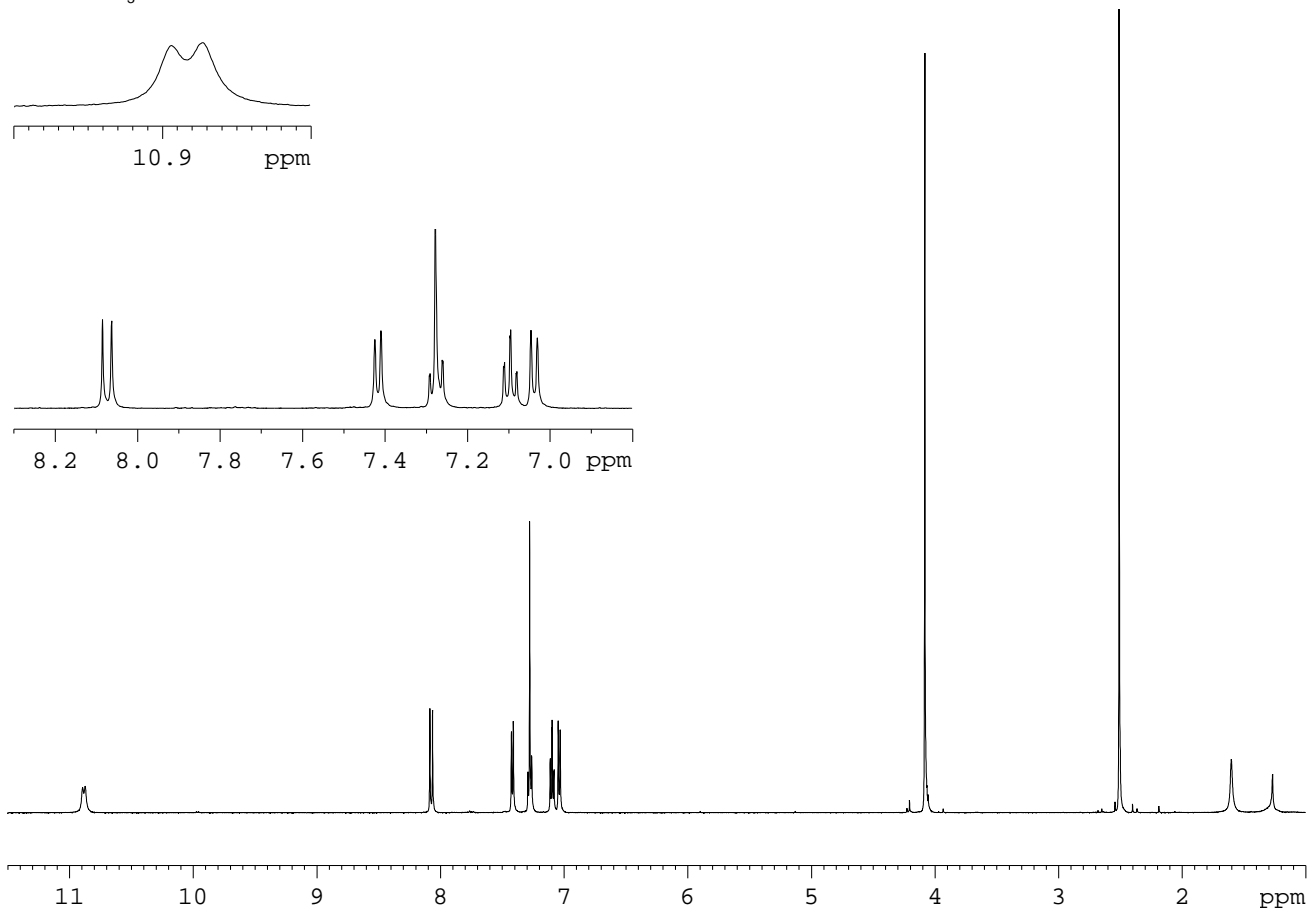
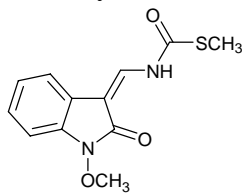
1-Methoxy-3-methylindole-2-one (8)



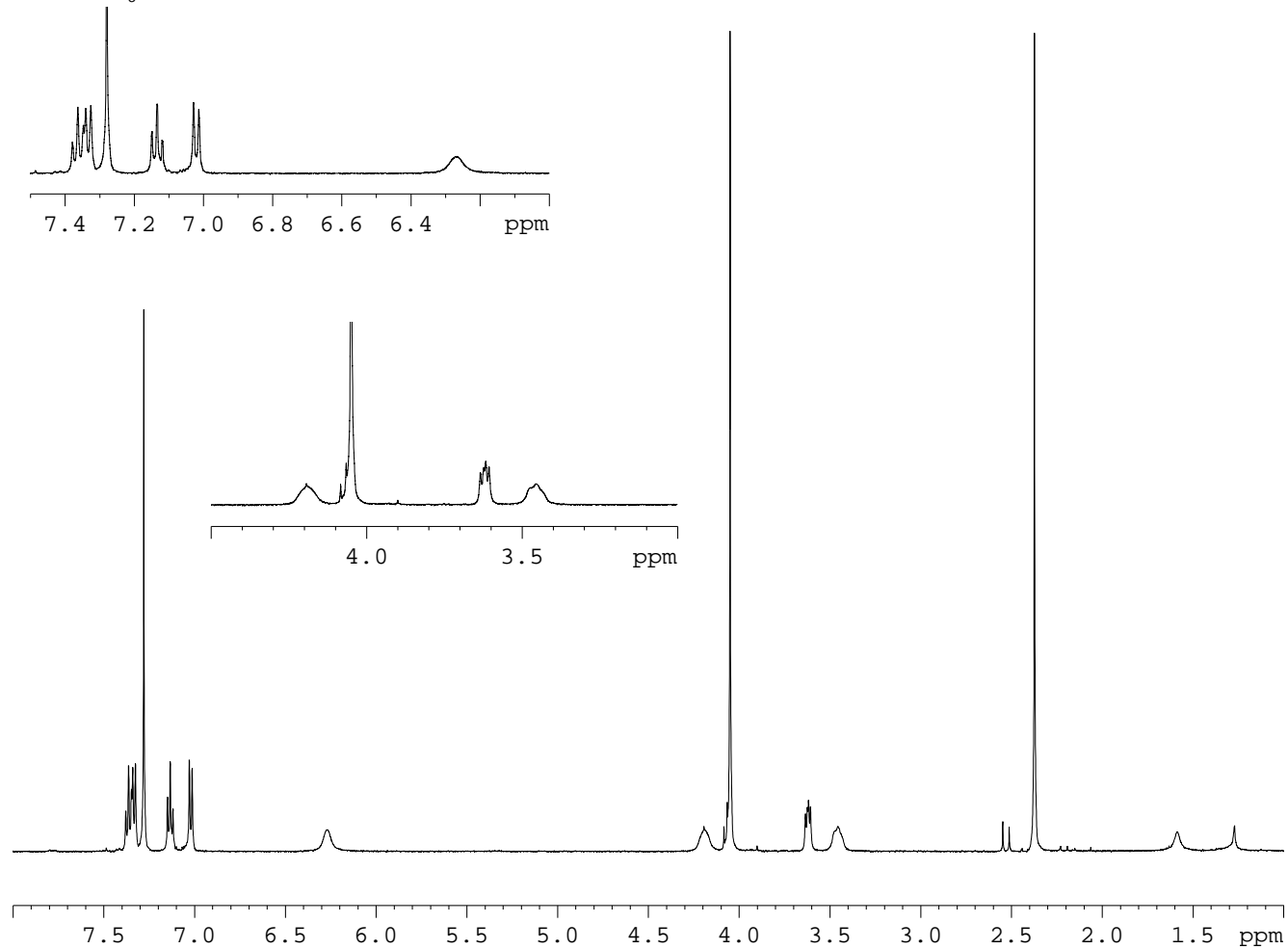
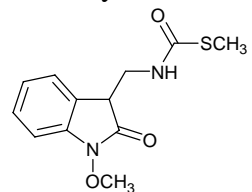
1-Methoxy-3-methylsulfanylmethylindole-2-one (9)



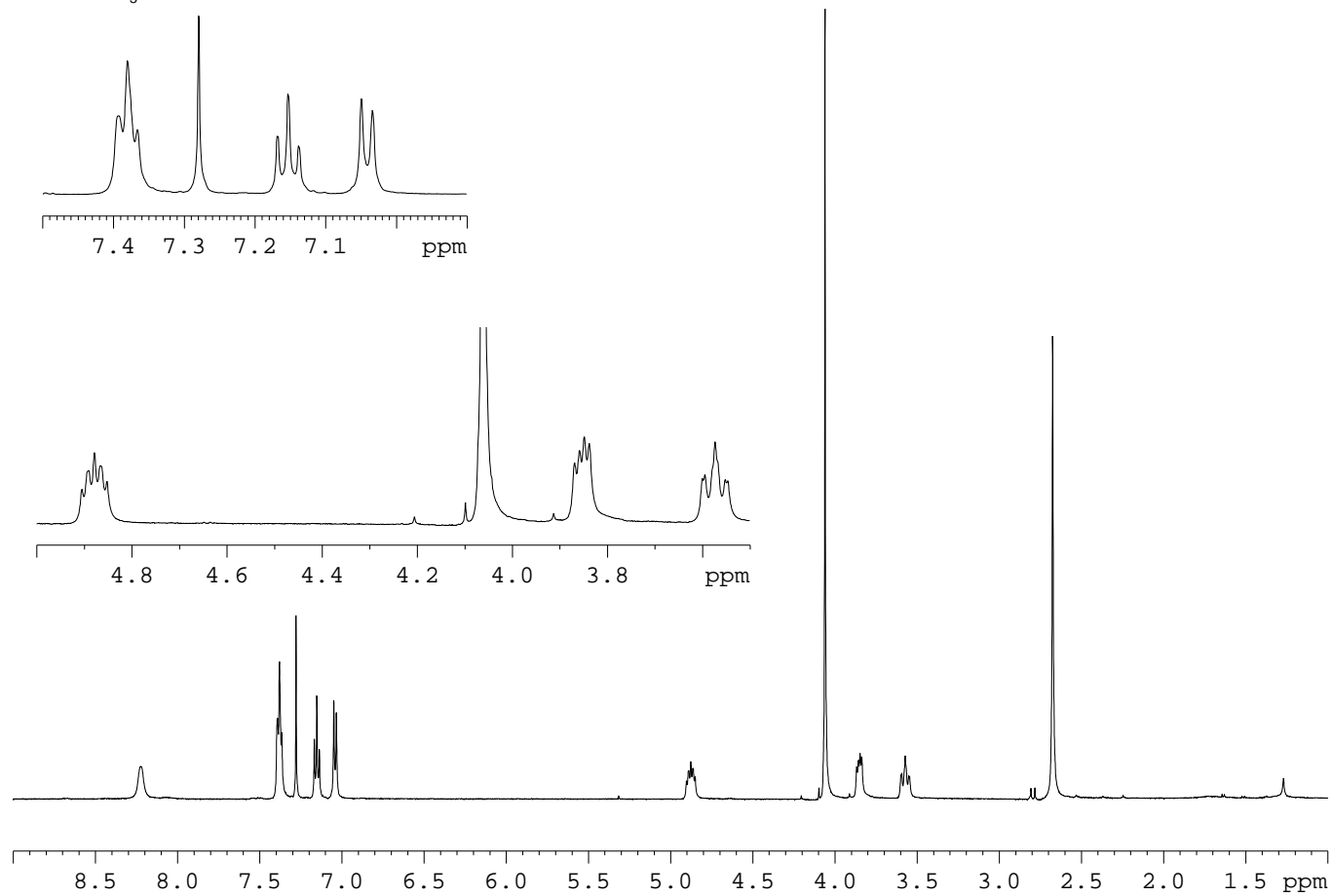
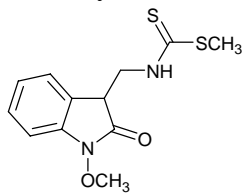
S-Methyl 1-methoxy-3-aminomethylene-2-oxindole thiocarbamate (**10**)



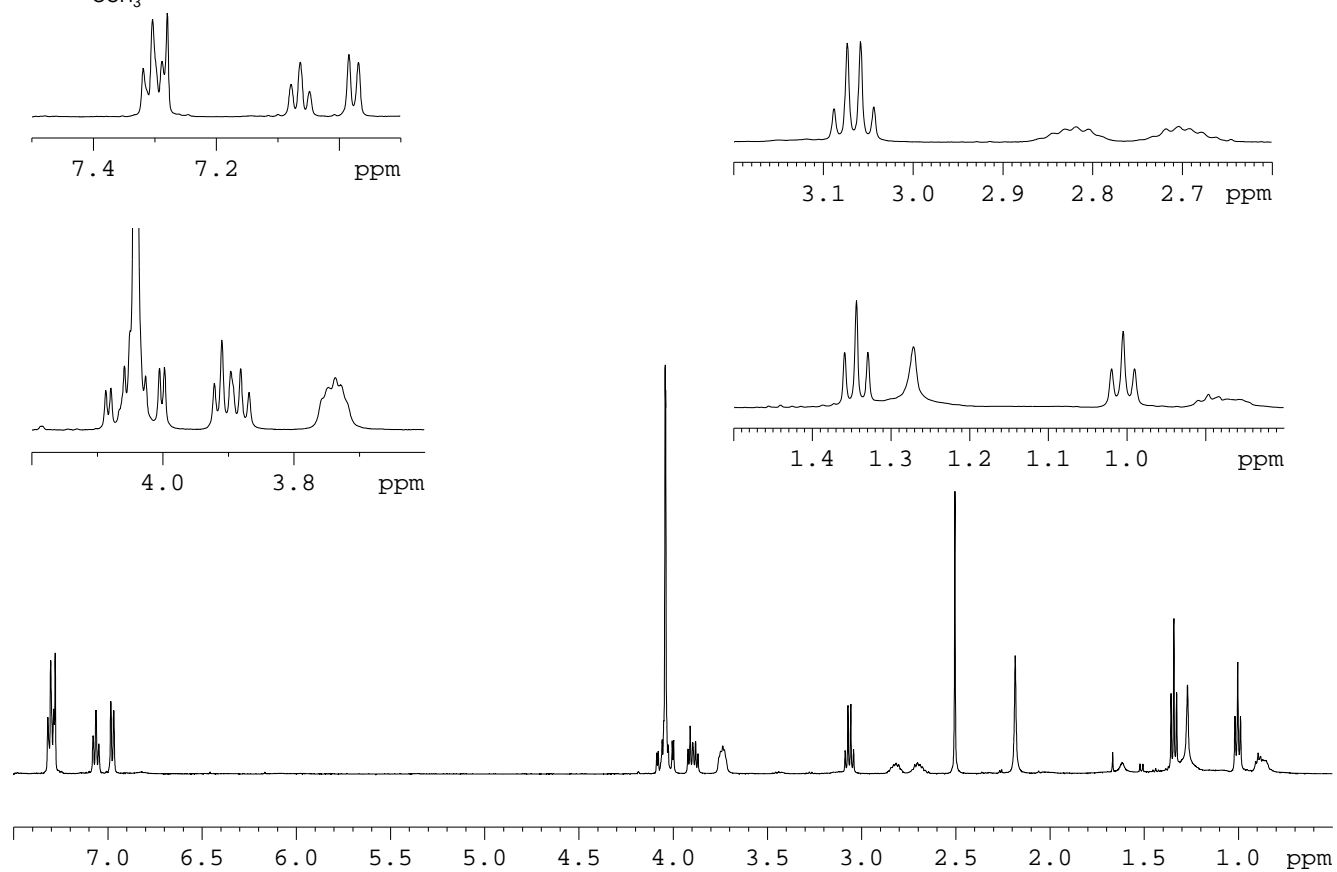
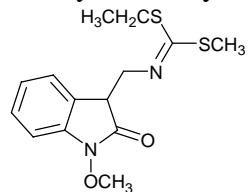
S-Methyl 1-methoxy-3-aminomethyl-2-oxindole thiocarbamate (**11**)



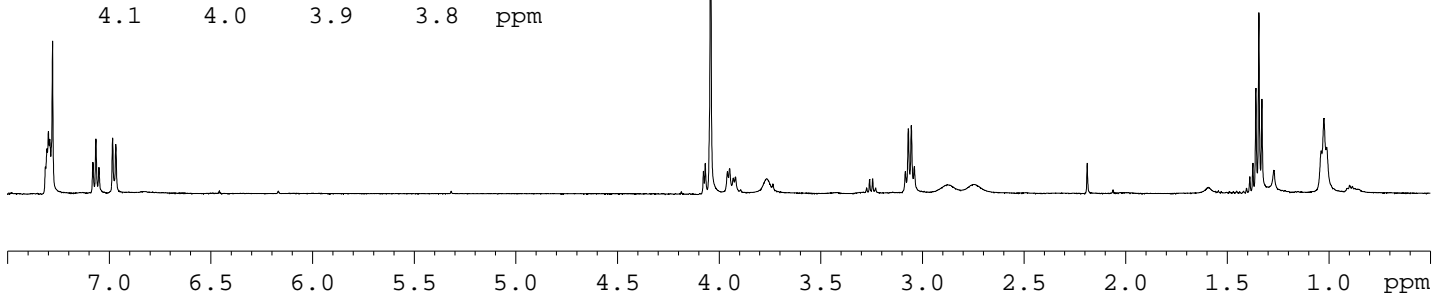
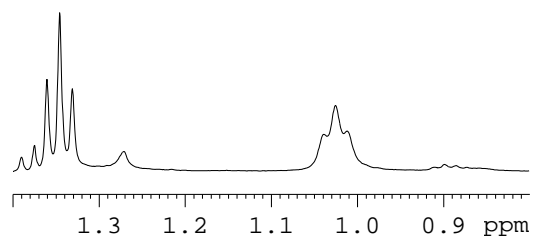
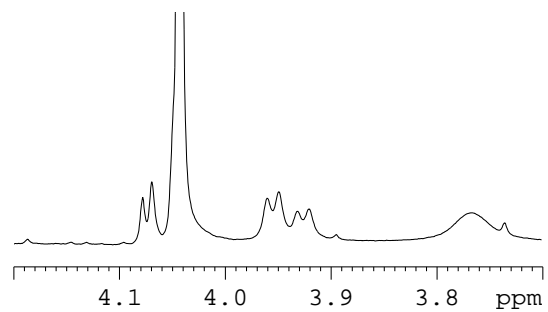
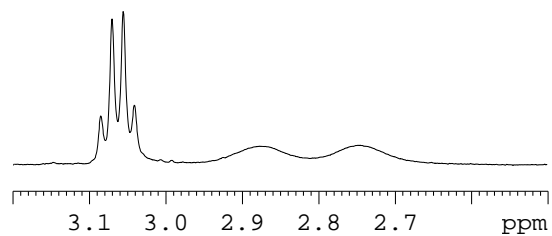
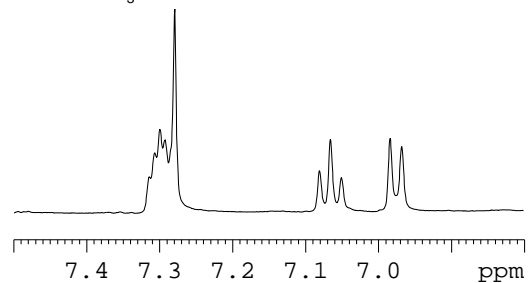
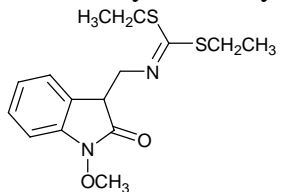
S-Methyl 1-methoxy-3-aminomethyl-2-oxindole dithiocarbamate (**14**)



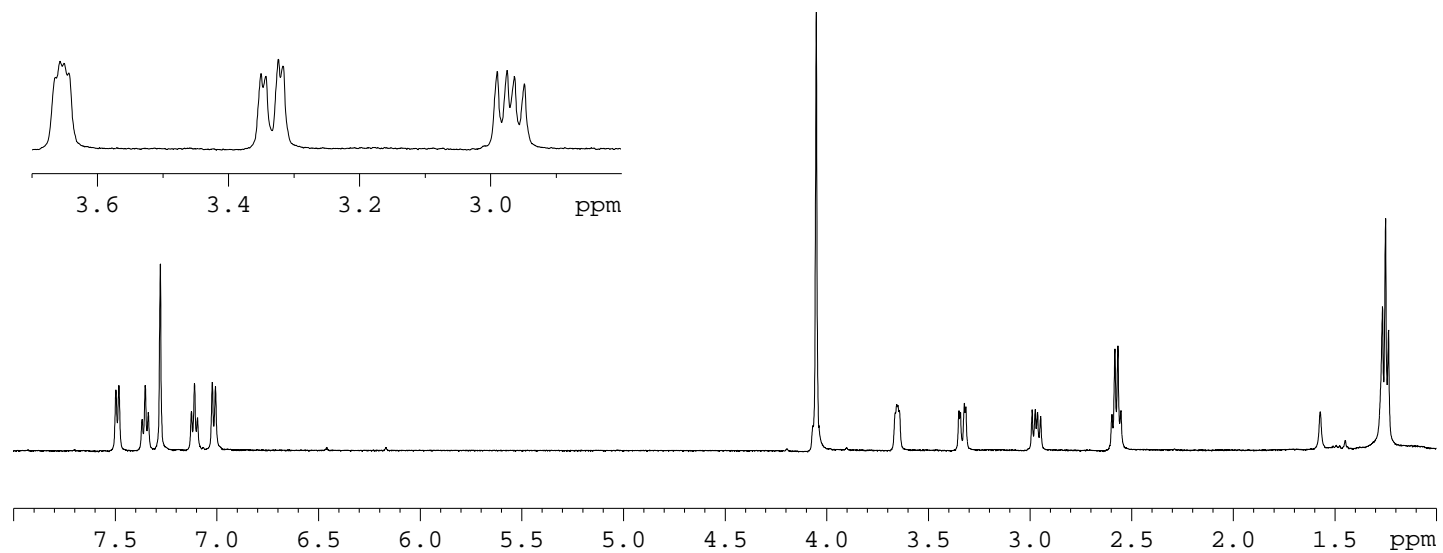
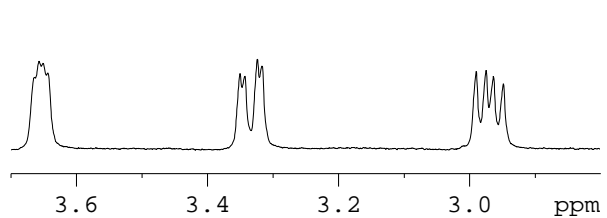
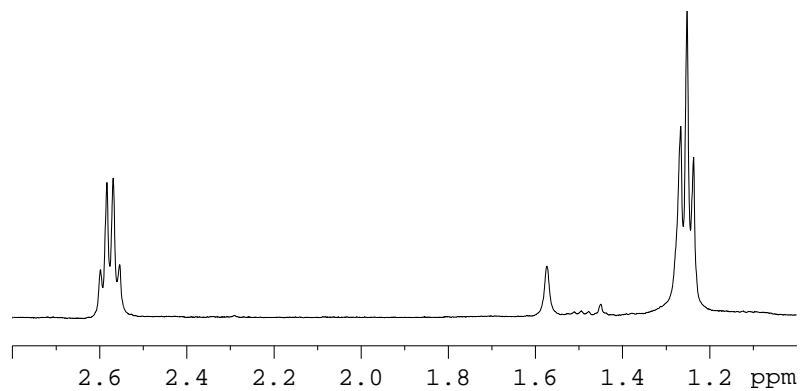
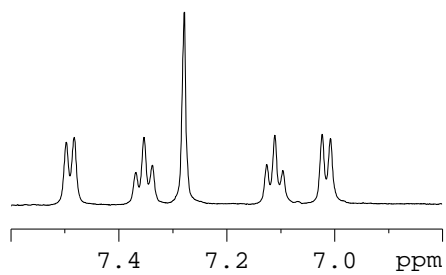
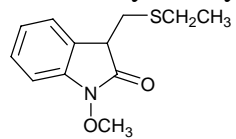
S-Ethyl-*S*-methyl 1-methoxy-3-aminomethyl-2-oxindole iminodithioate (**16**)



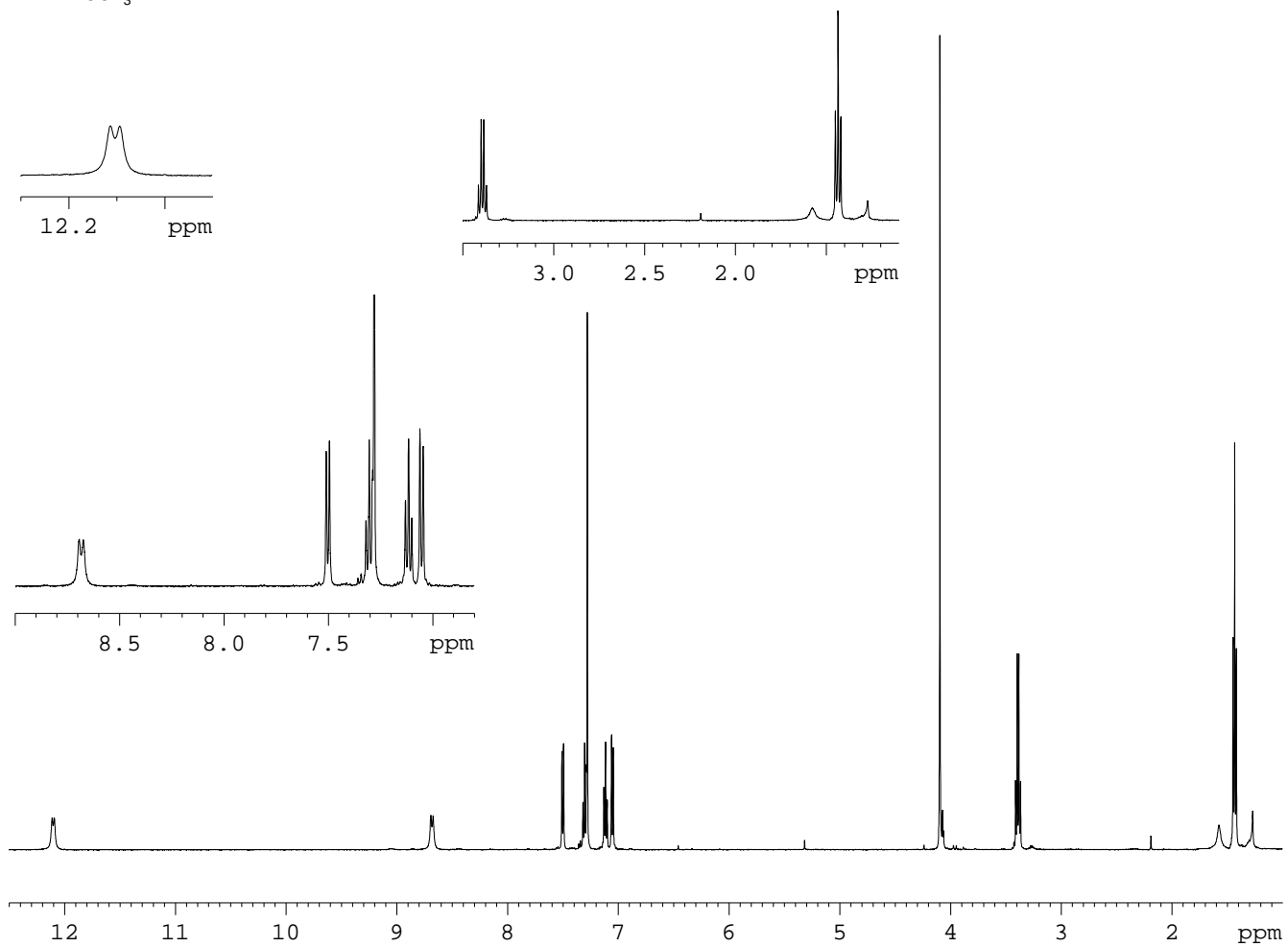
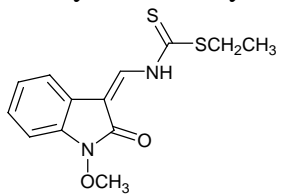
S,S-Diethyl methoxy-3-aminomethyl-2-oxindole iminodithioate (**17**)



1-Methoxy-3-ethylsulfanylmethylindole-2-one (**18**)



S-Ethyl 1-methoxy-3-aminomethylene-2-oxindole dithiocarbamate (**20**)



S-Ethyl 1-methoxy-3-aminomethyl-2-oxindole dithiocarbamate (**25**)

