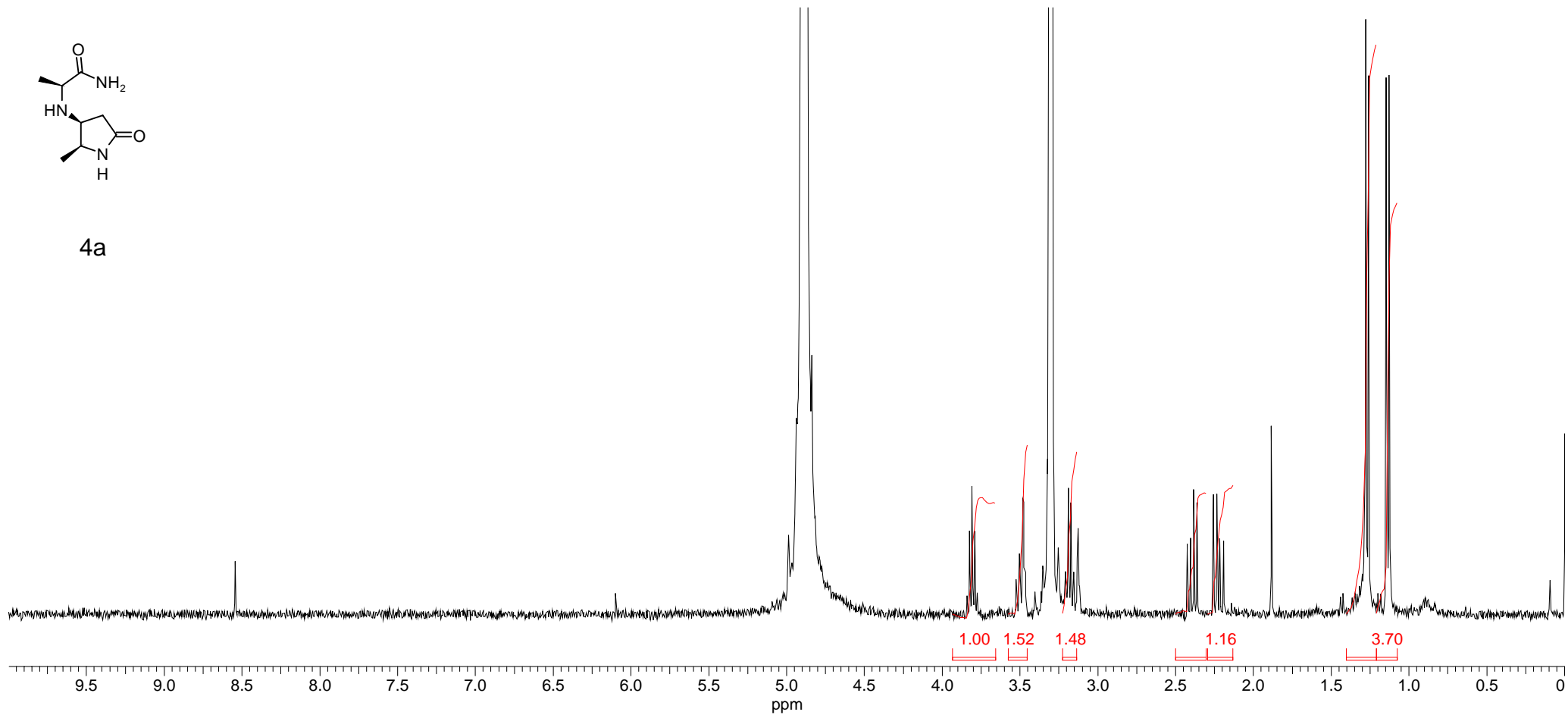
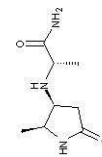


4a





4a

Current Data Parameters  
 NAME Nov20-2005mhos  
 EXPNO 31  
 PROCNO 1

F2 - Acquisition Parameters  
 Date\_ 20061121  
 Time 8 06  
 INSTRUM drx300  
 PROBHD 5 mm 1H Z8268/  
 PULPROG zgpg30  
 TD 32768  
 SOLVENT MeOD  
 NS 8000  
 DS 2  
 SWH 23609.523 Hz  
 FIDRES 0.726609 Hz  
 AQ 0.6881780 sec  
 RG 6502  
 CW 21 000 usec  
 DE 10 50 usec  
 TE 296.2 K  
 D1 4.0000000 sec  
 d11 0.0300000 sec  
 DELTA 3.9000010 sec  
 MCREST 0.0000000 sec  
 MCWRK 0.0150000 sec

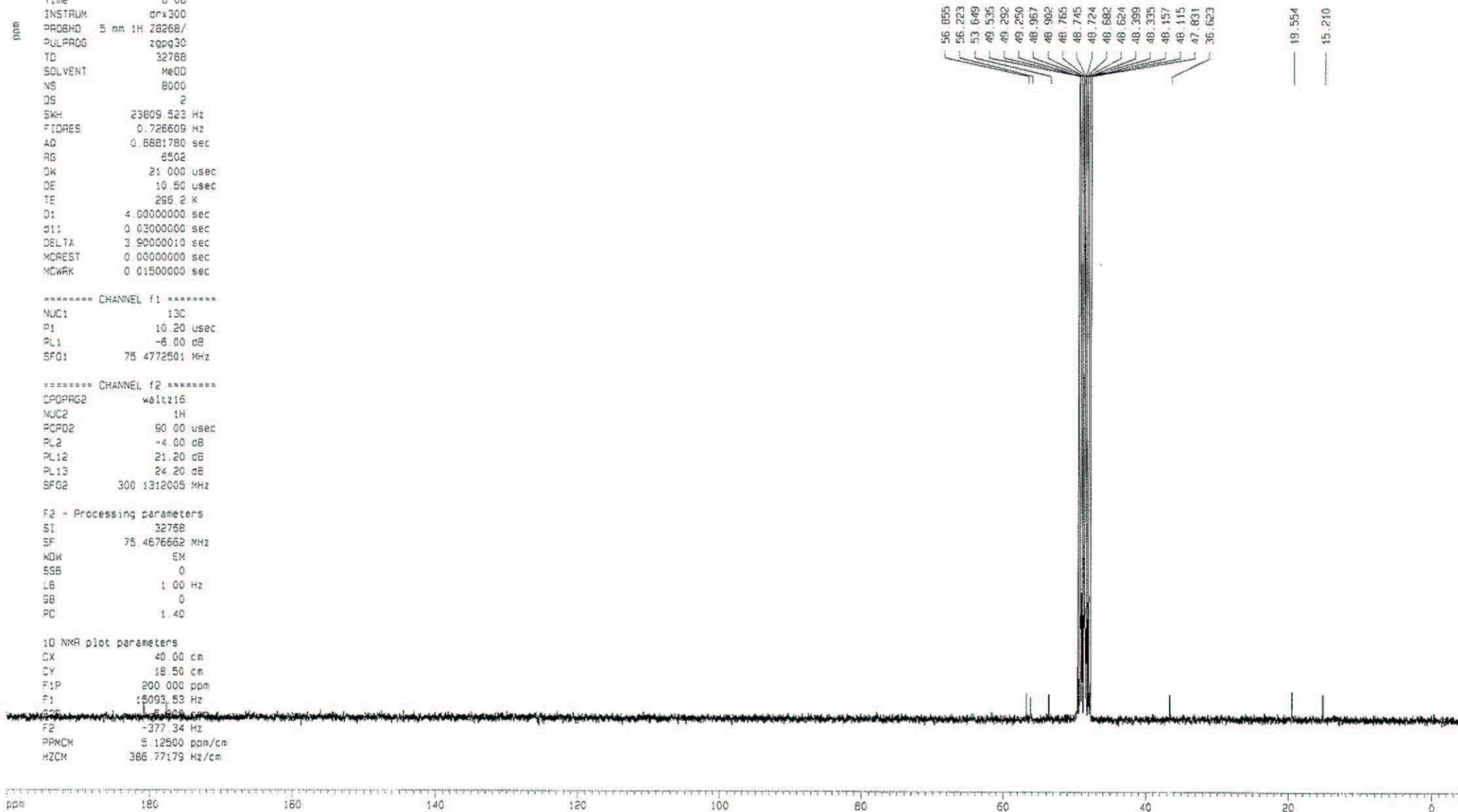
==== CHANNEL f1 =====  
 NUC1 13C  
 P1 10.20 usec  
 PL1 -6.00 dB  
 SFO1 75.4772501 MHz

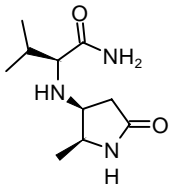
==== CHANNEL f2 =====  
 CPDPRG2 waltz16  
 NUC2 1H  
 PCPD2 90 00 usec  
 PL2 -4.00 dB  
 PL12 21.20 dB  
 PL13 24.20 dB  
 SFO2 300.1312005 MHz

F2 - Processing parameters  
 SI 32768  
 SF 75.4676662 MHz  
 KDK EM  
 SSB 0  
 LB 1.00 Hz  
 GB 0  
 PC 1.40

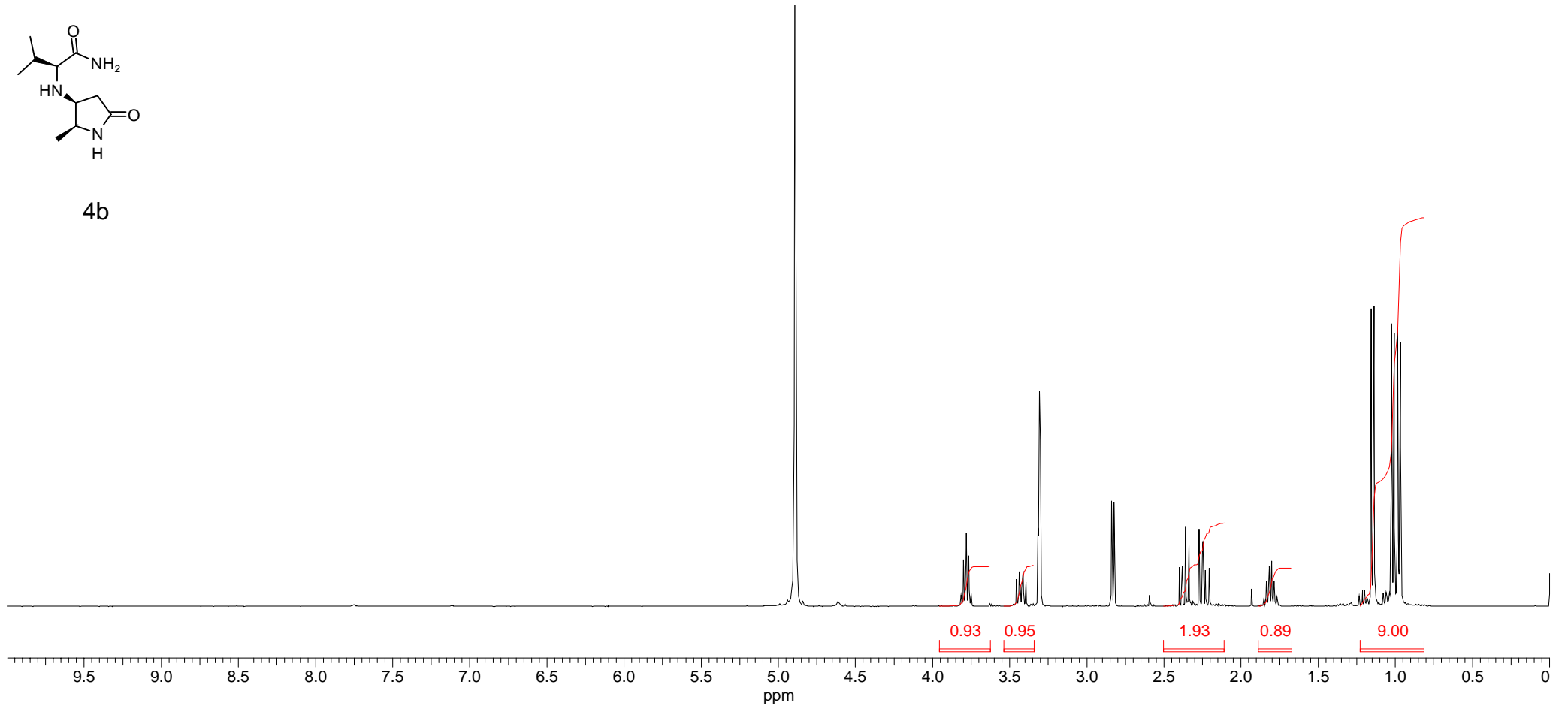
1D NMR plot parameters  
 CX 40 00 cm  
 CY 18 50 cm  
 F1P 200 000 ppm  
 F1 15093.53 Hz  
 F2 75.4676662 MHz  
 F2 -377.34 Hz  
 PPMCM 5.12500 ppm/cm  
 HZCM 366.77179 Hz/cm

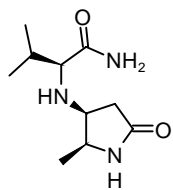
red PyAlaAla



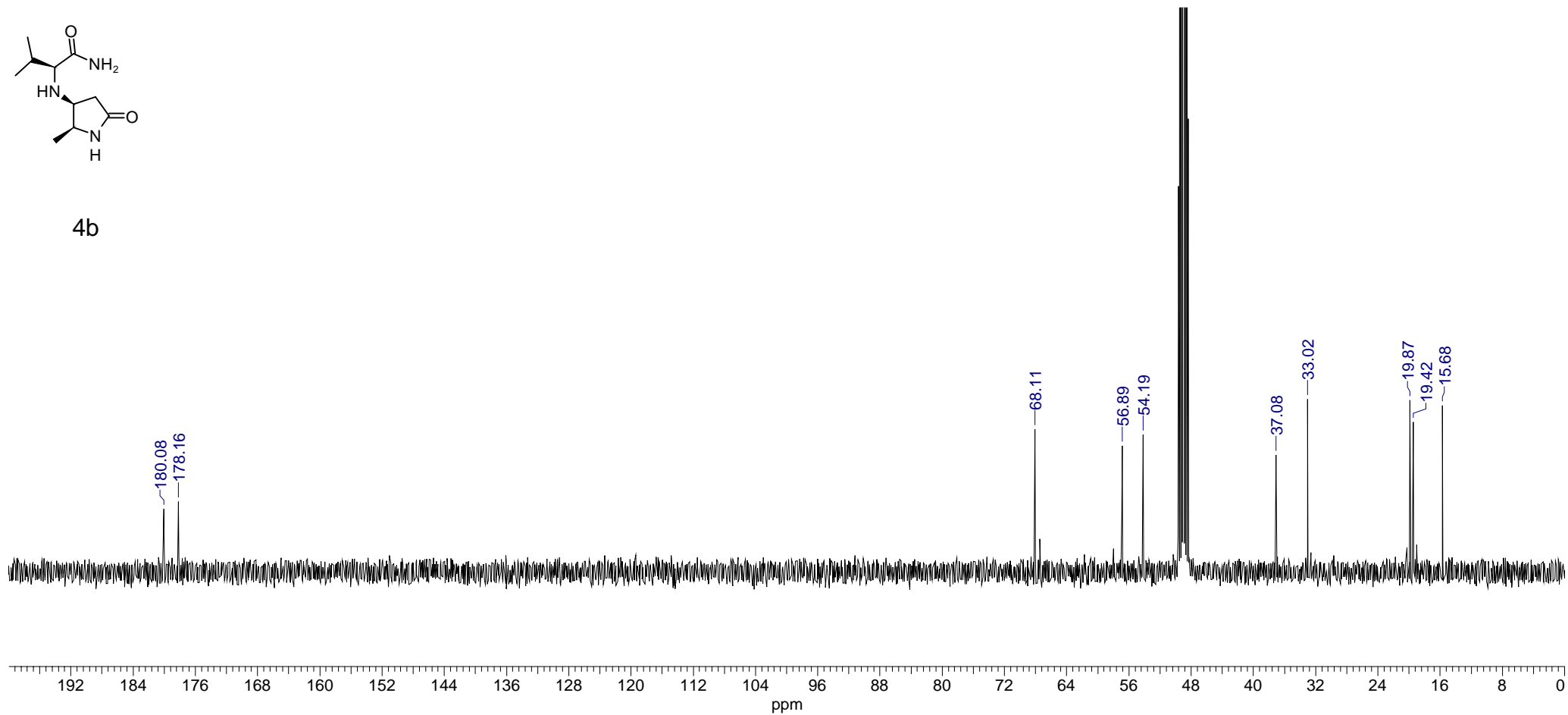


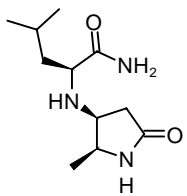
4b



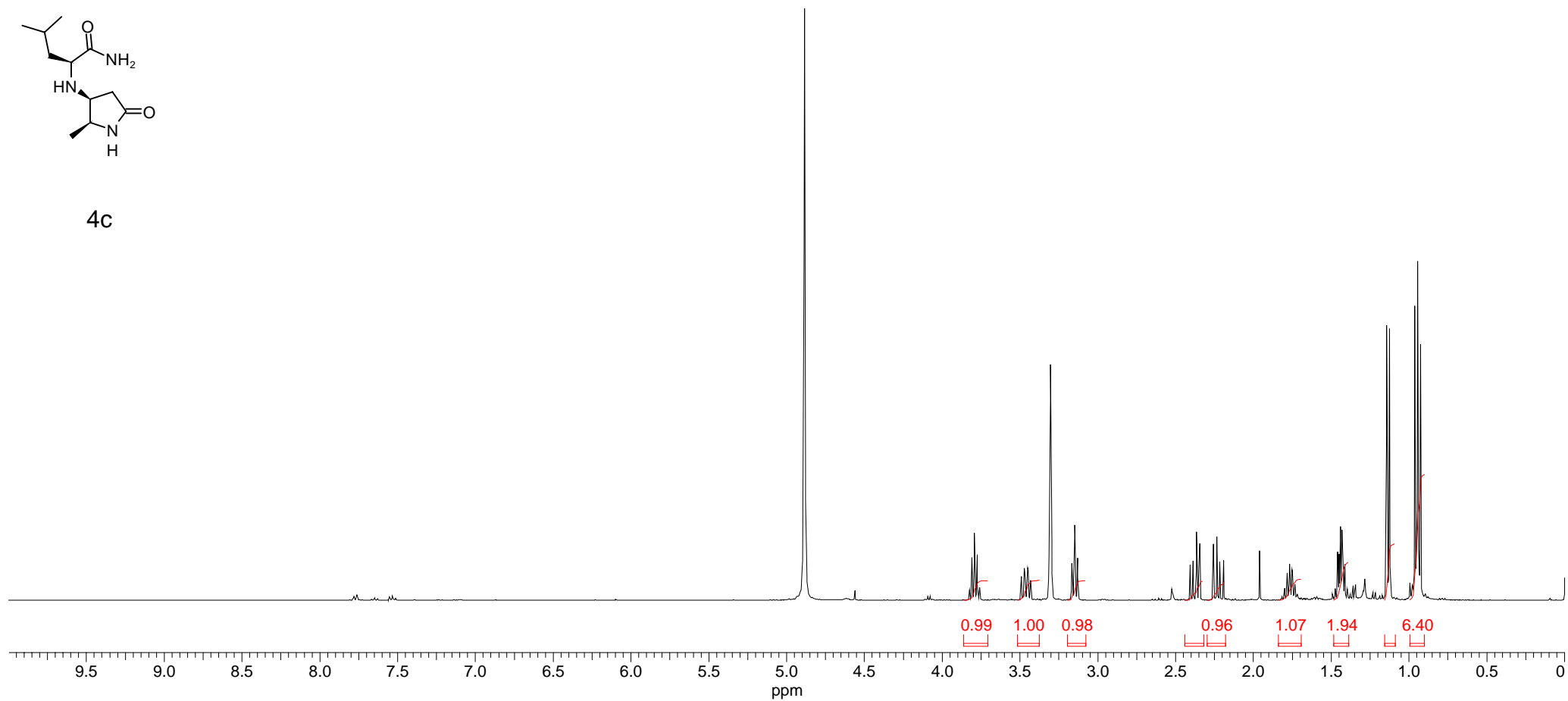


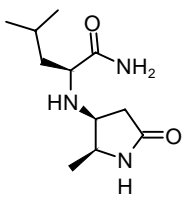
4b



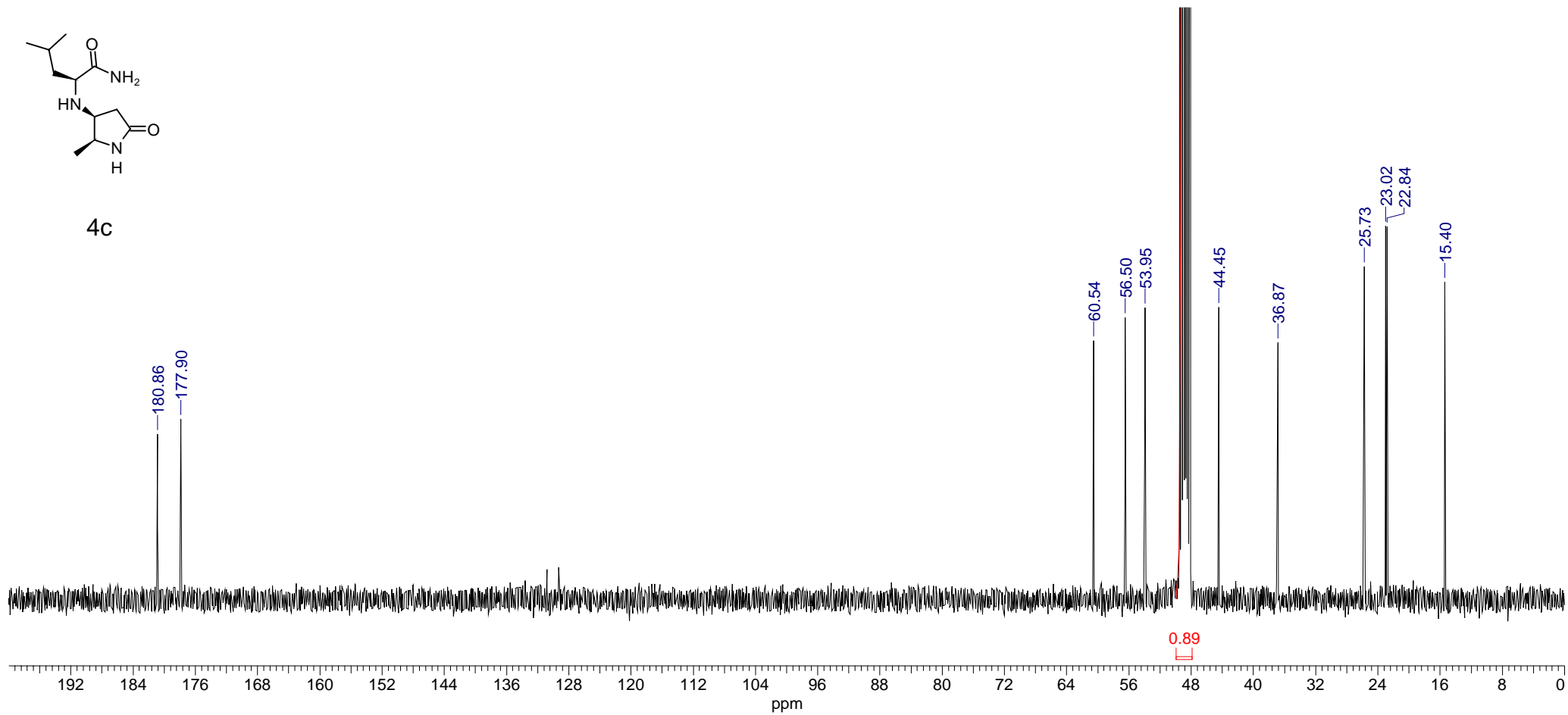


4c

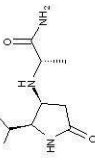




4c



red PyValAla



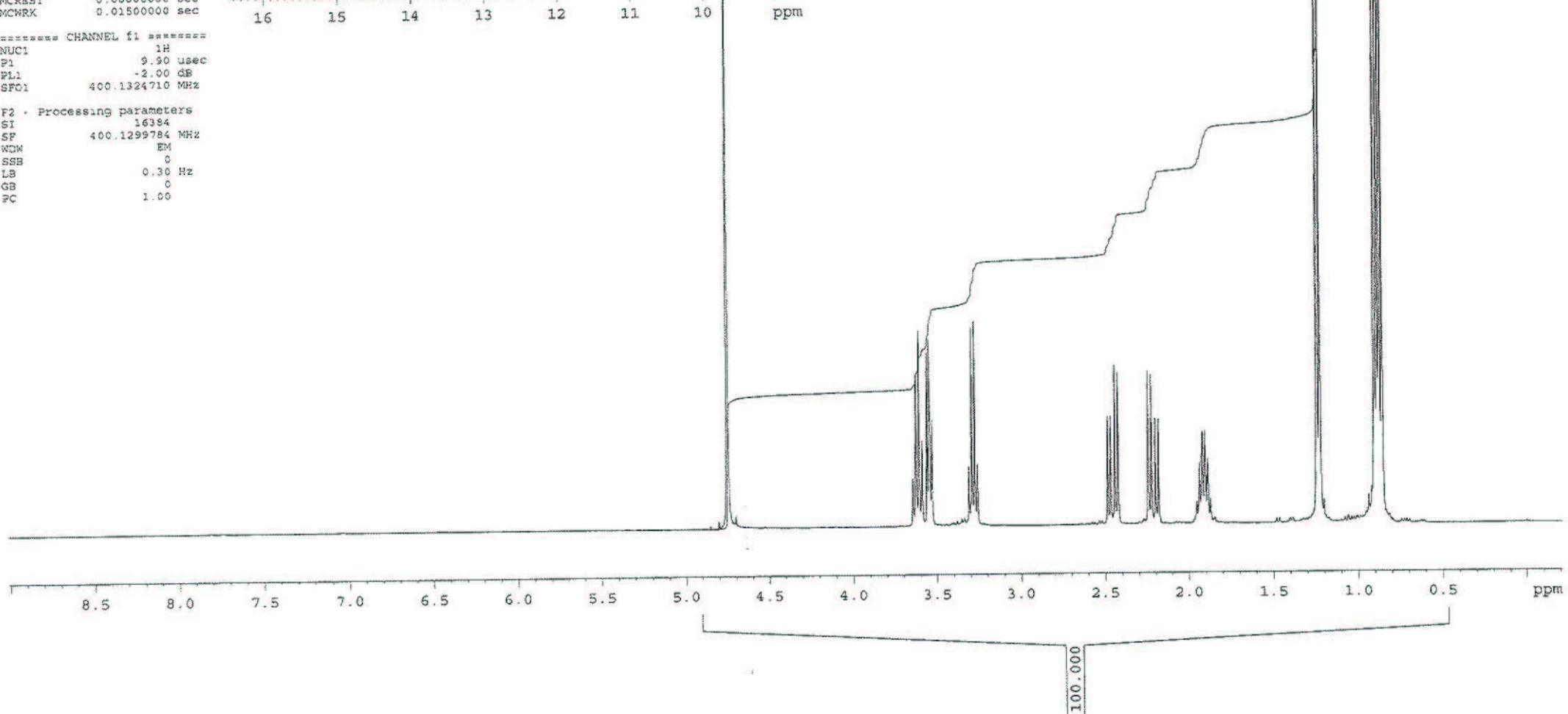
4d

Current Data Parameters  
NAME Nov08-2006mhos  
EXPNO 90  
PROCNO 1

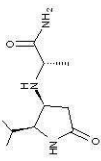
F2 - Acquisition Parameters  
Date\_ 20061108  
Time 15.30  
INSTRUM av400  
PROBHD 5 mm QNP 1H/13  
PULPROG zg30  
TD 32768  
SOLVENT D2O  
NS 16  
DS 2  
SWH 8278.146 Hz  
FIDRES 0.252629 Hz  
AQ 1.9792372 sec  
RG 114  
DM 60.400 usec  
DE 10.50 usec  
TE 294.3 K  
D1 1.00000000 sec  
MCREST 0.00000000 sec  
MCMRK 0.01500000 sec

===== CHANNEL f1 =====  
NUC1 1H  
P1 9.90 usec  
PL1 -2.00 dB  
SFO1 400.1324710 MHz

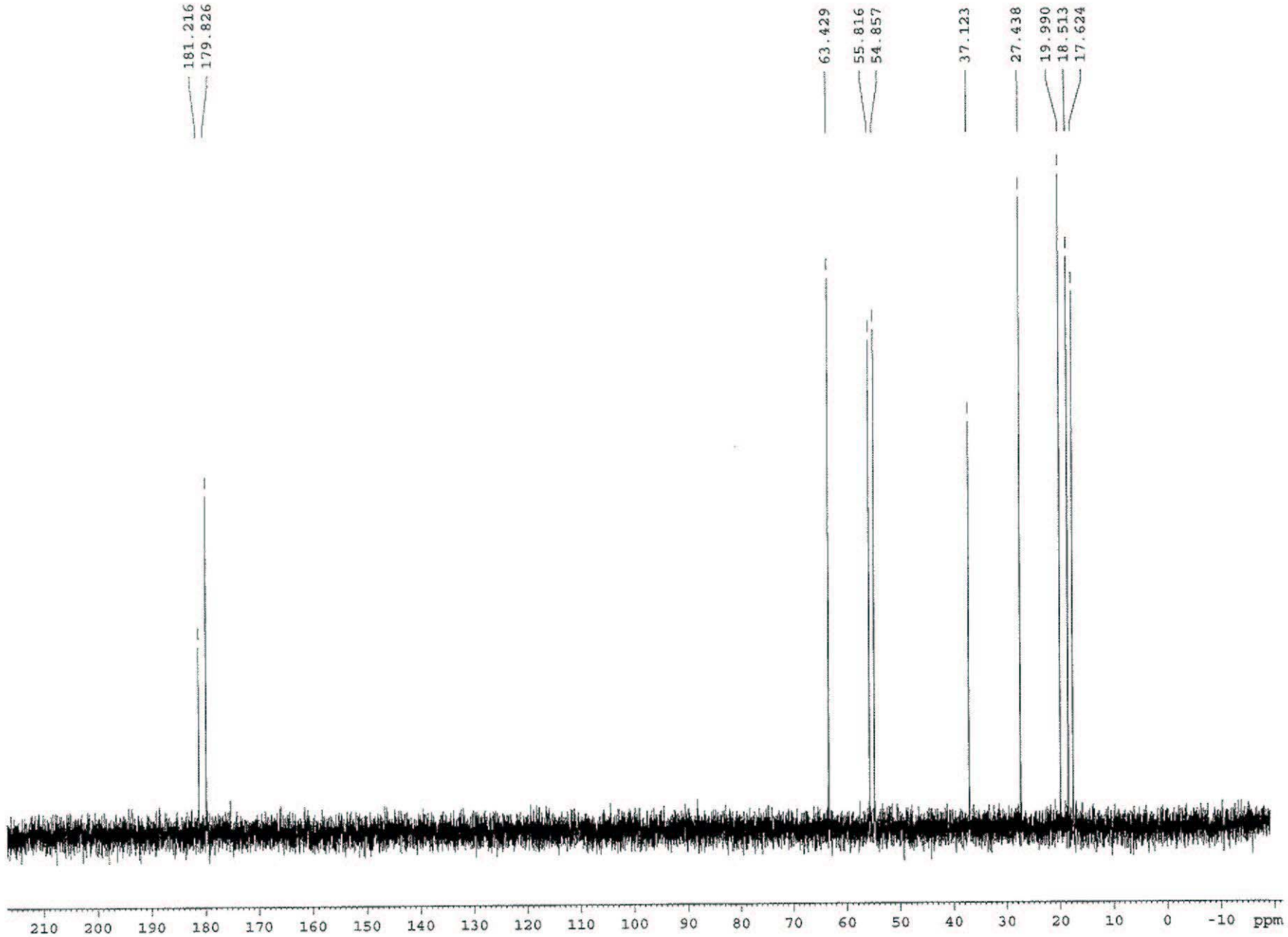
F2 - Processing parameters  
SI 16384  
SF 400.1299784 MHz  
WDM EM  
SSB 0  
LB 0.30 Hz  
GB 0  
PC 1.00



red PyValAla



4d



Current Data Parameters  
NAME Nov08-2006mhos  
EXPNO 91  
PROCNO 1

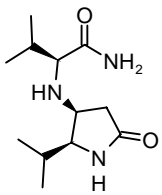
F2 - Acquisition Parameters  
Date\_ 20061108  
Time 15.28  
INSTRUM av400  
PROBHD 5 mm QNP 1H/13  
PULPROG zgpg30  
TD 65536  
SOLVENT D2O  
NS 128  
DS 4  
SMH 23980.814 Hz  
FIDRES 0.365912 Hz  
AQ 1.3664756 sec  
RG 1448.2  
DM 20.850 usec  
DE 10.50 usec  
TE 294.6 K  
D1 2.0000000 sec  
d11 0.0300000 sec  
DELTA 1.89999998 sec  
MCREST 0.0000000 sec  
MCWRK 0.01500000 sec

===== CHANNEL f1 =====  
NUC1 13C  
P1 7.60 usec  
PL1 -3.00 dB  
SFO1 100.6227898 MHz

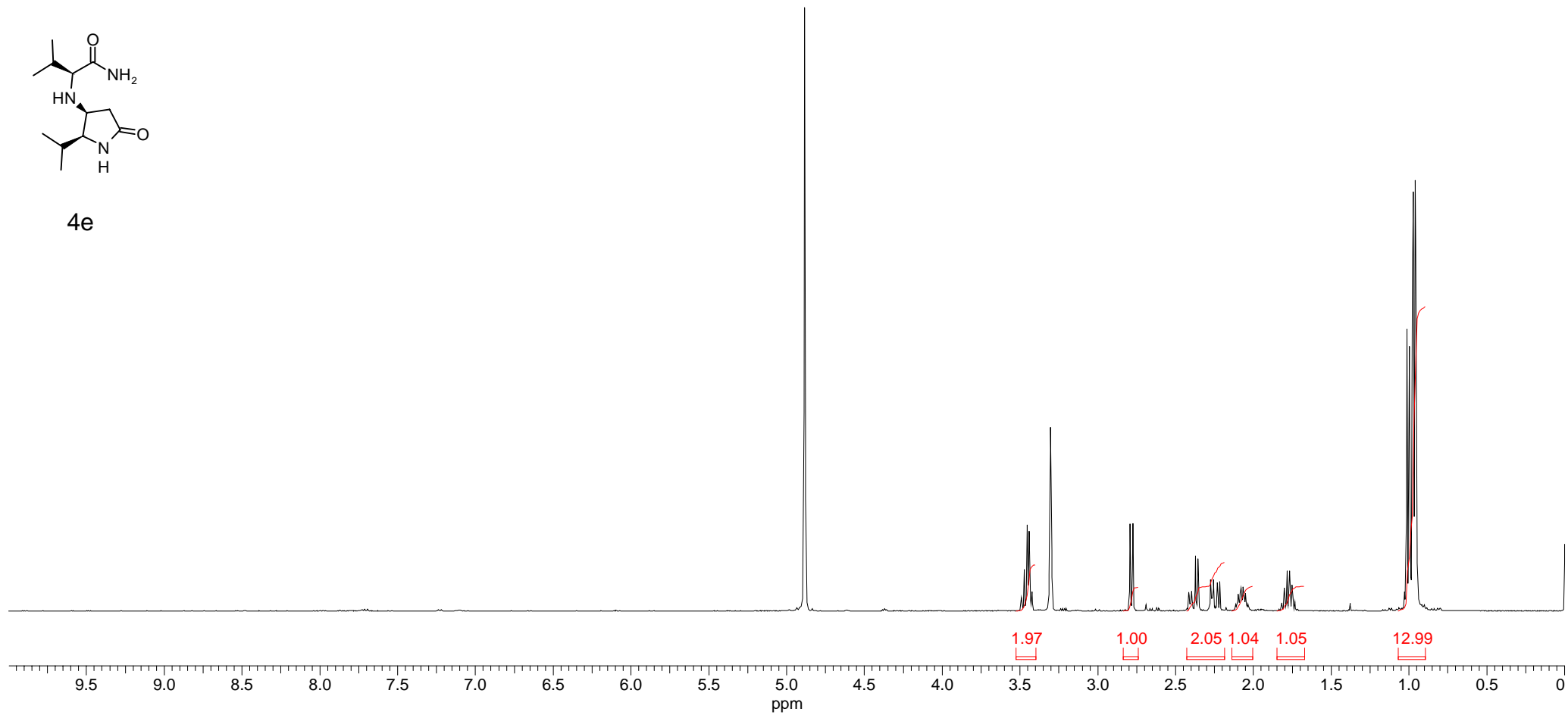
===== CHANNEL f2 =====  
CPDPRG2 waltz16  
NUC2 1H  
PCPD2 80.00 usec  
PL2 -3.00 dB  
PL12 17.00 dB  
PL13 17.00 dB  
SFO2 400.1316005 MHz

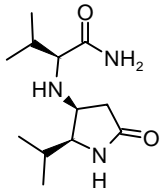
F2 - Processing parameters  
SI 32768  
SF 100.6127290 MHz  
WDW EM  
SSB 0  
LB 1.00 Hz  
GB 0  
PC 1.40



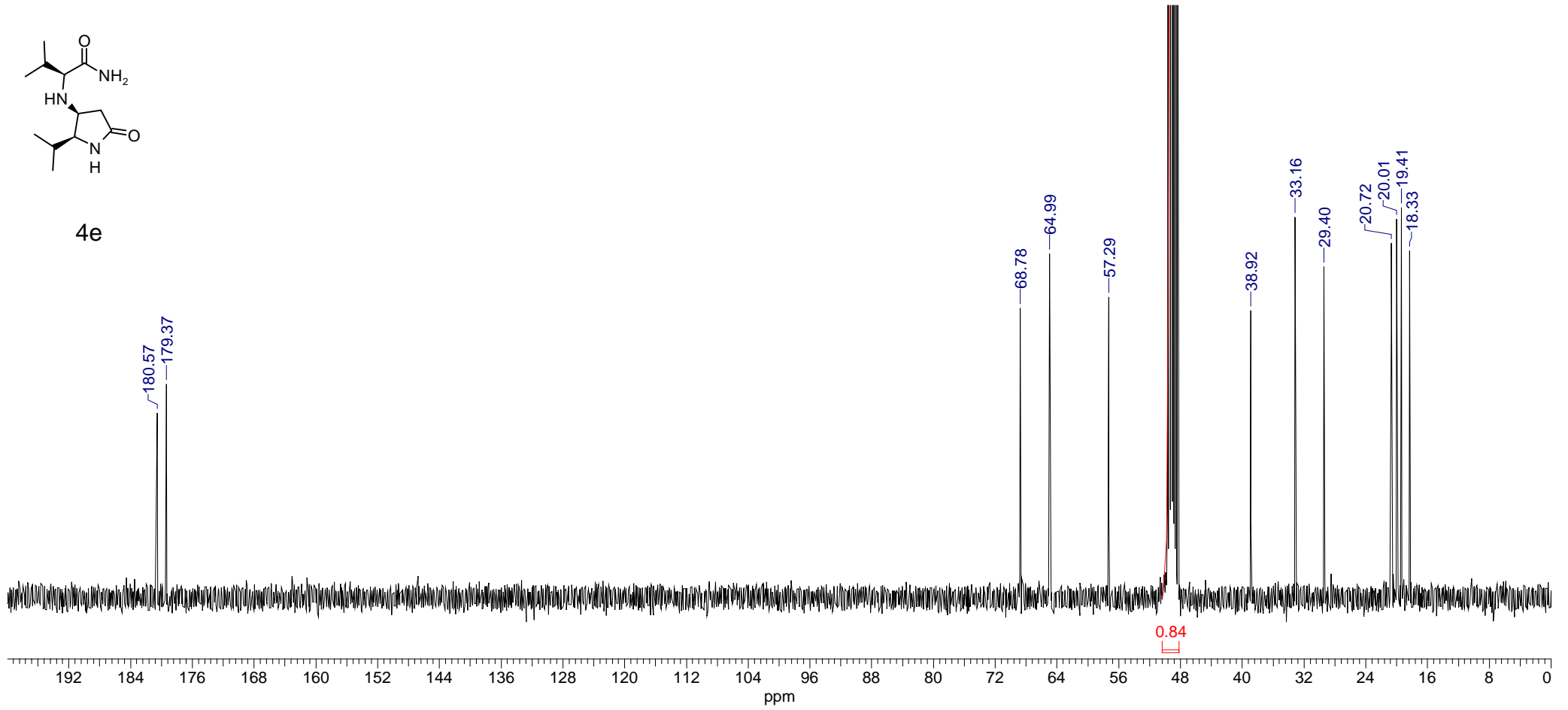


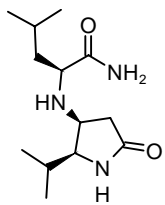
4e



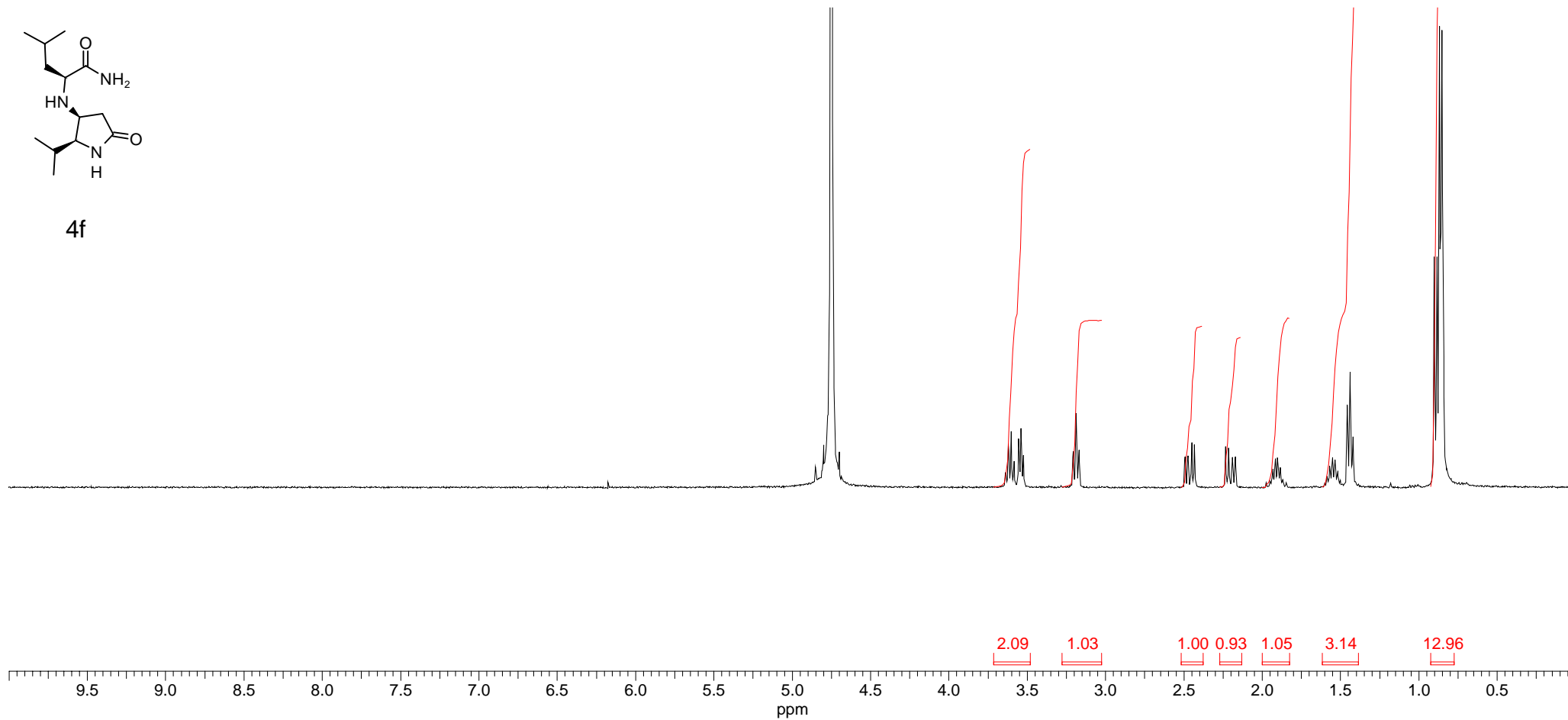


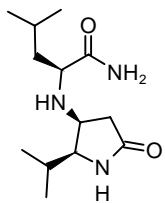
4e



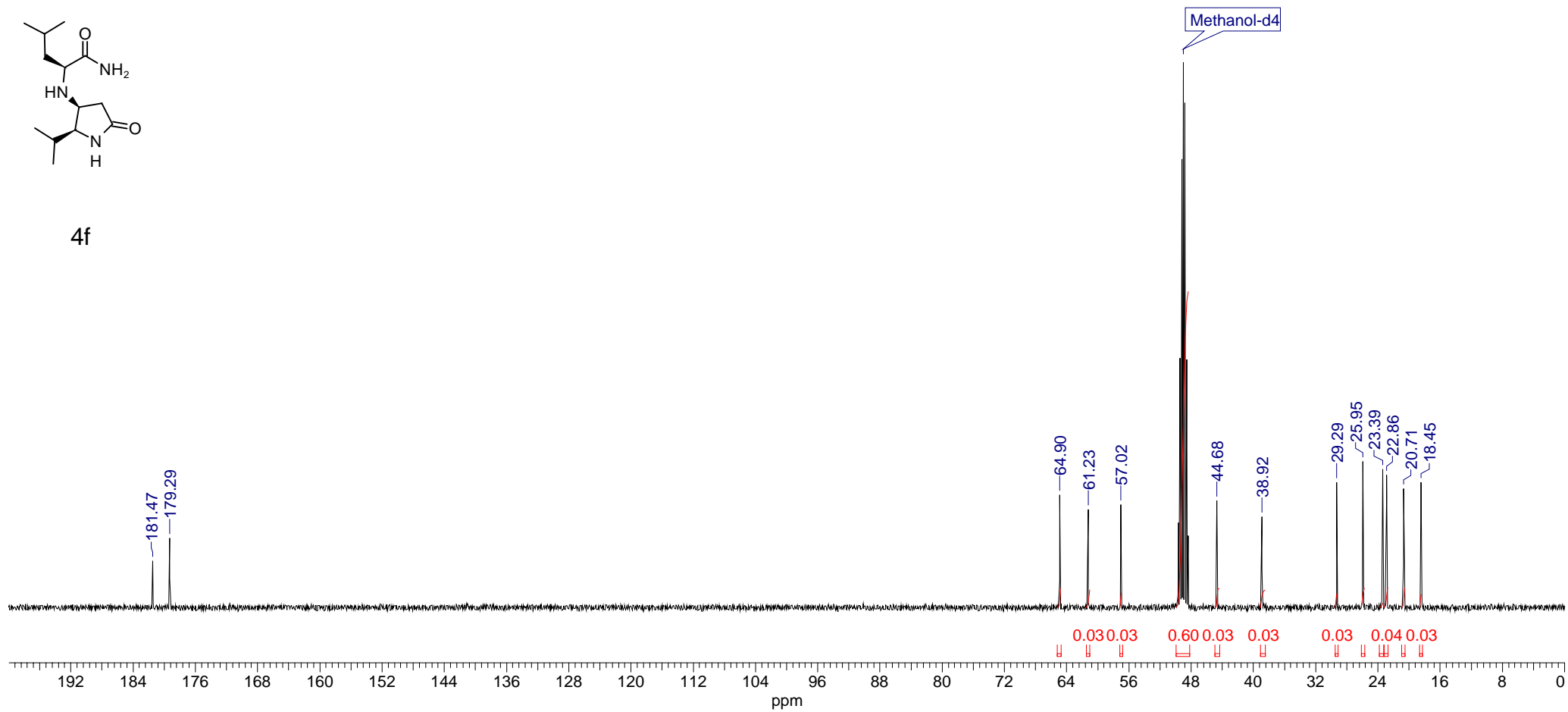


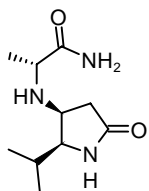
4f



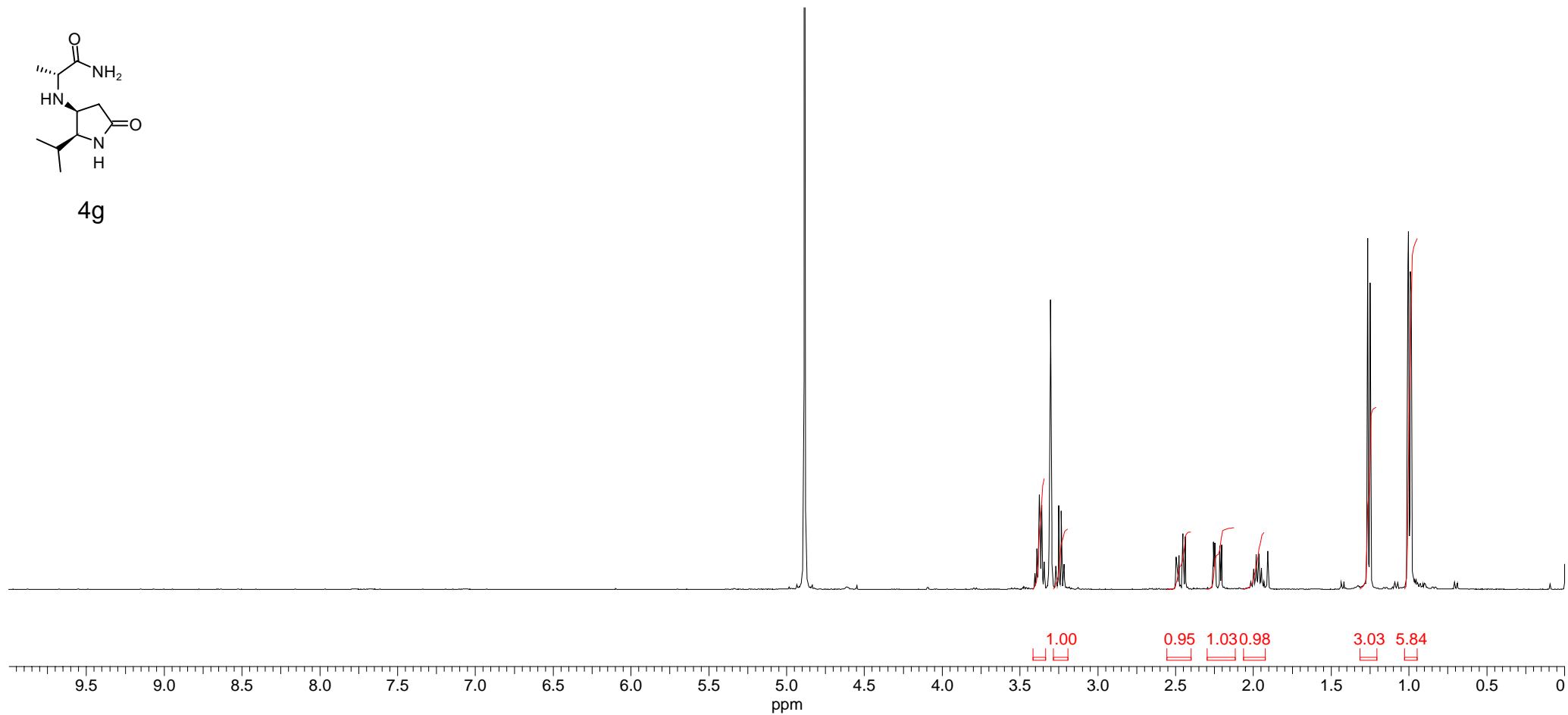


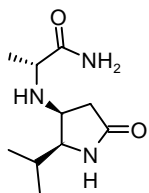
4f



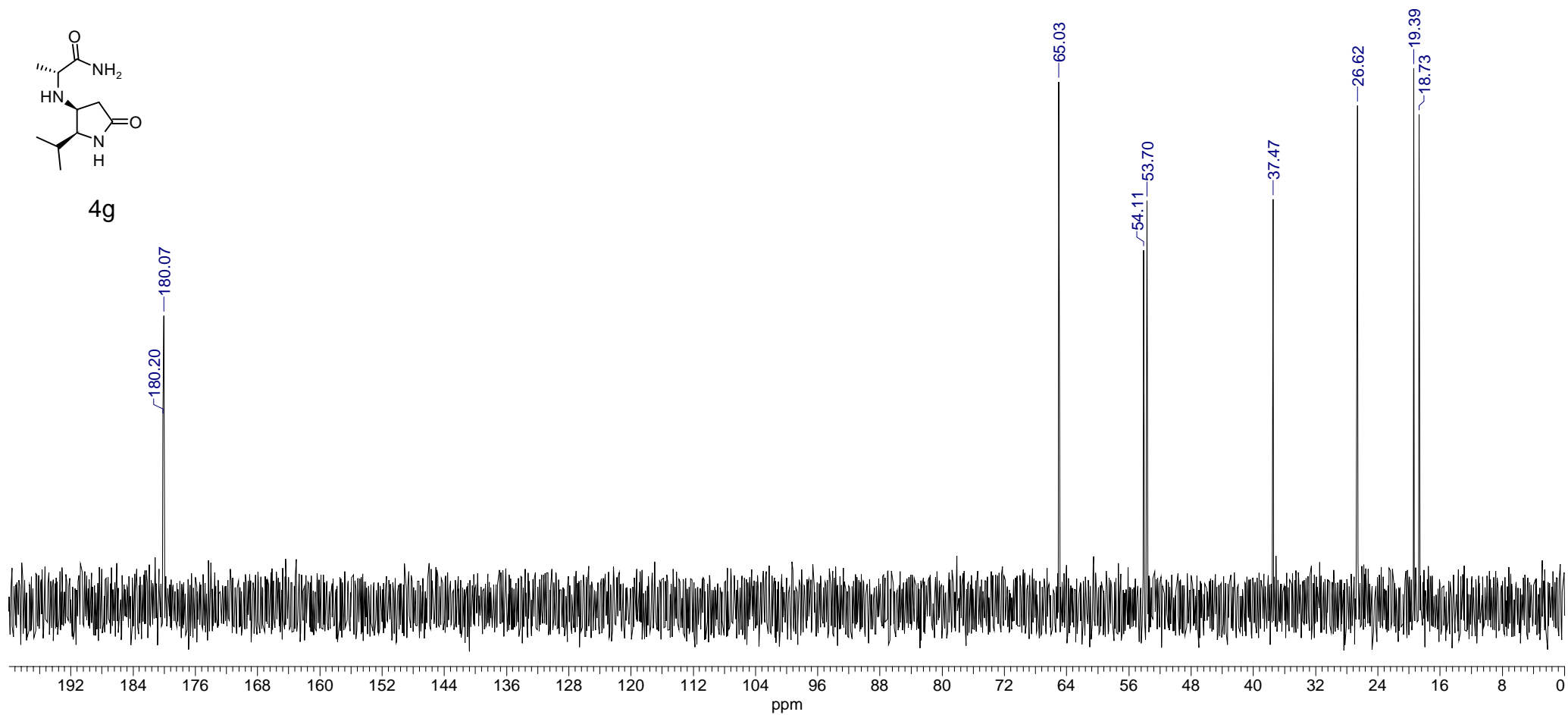


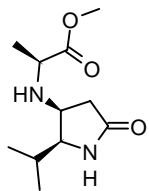
4g



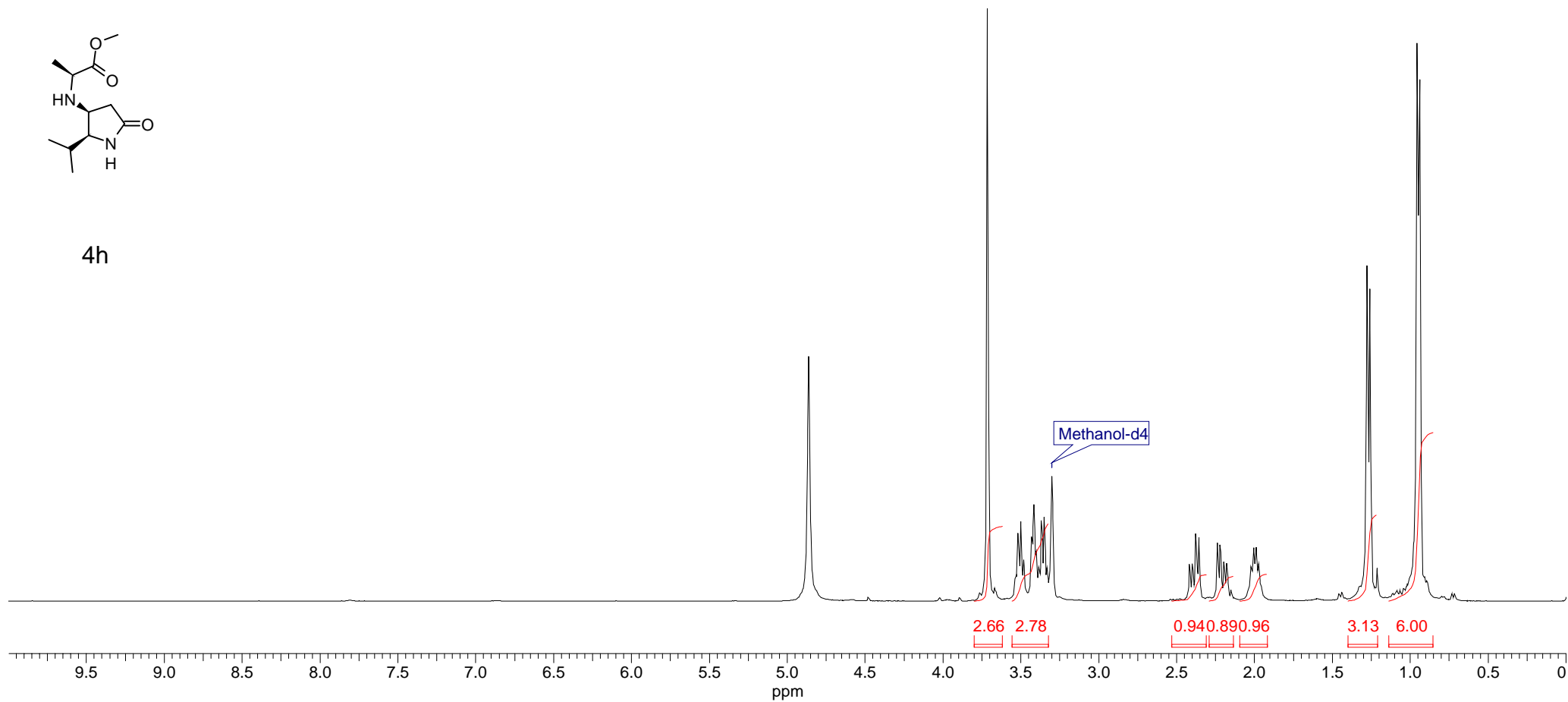


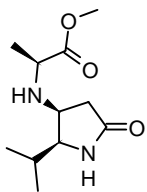
4g



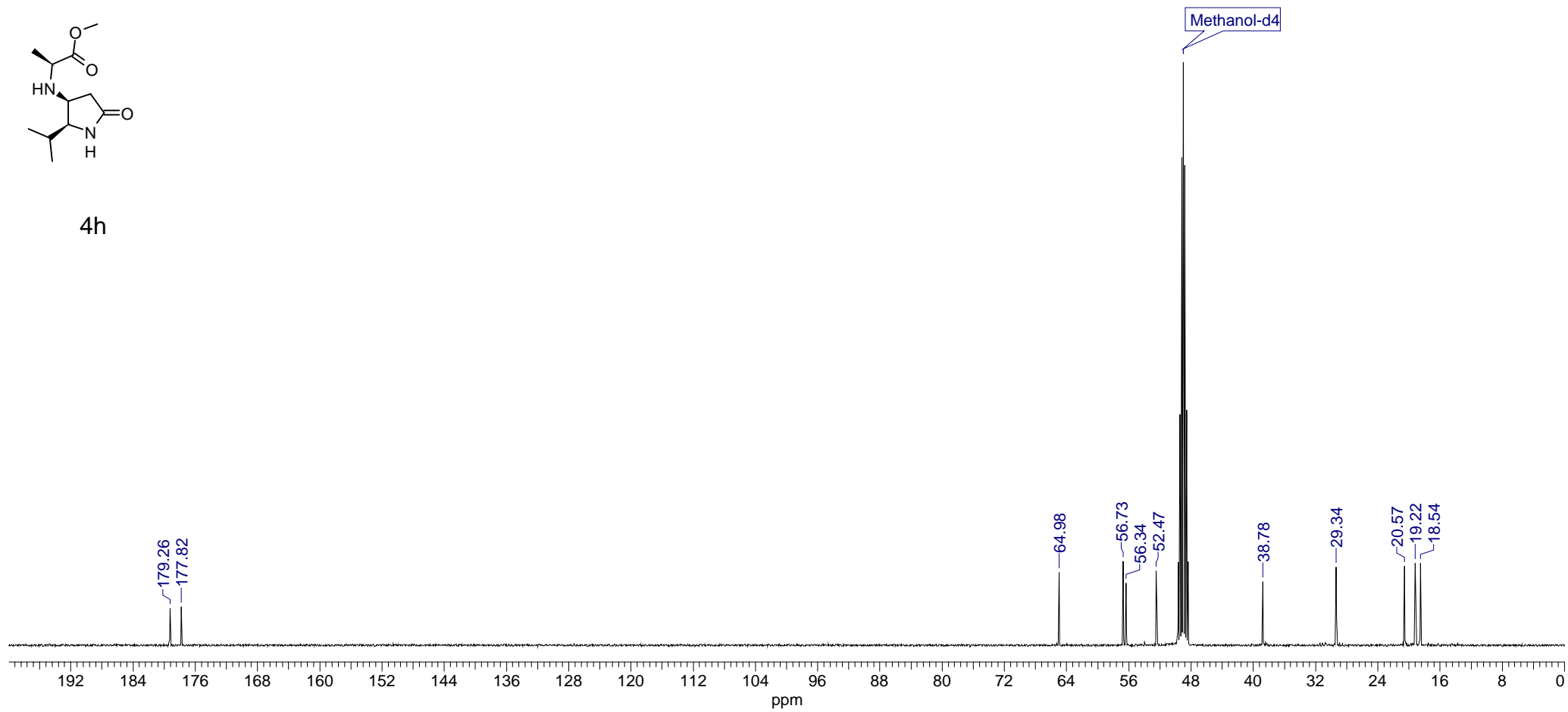


4h

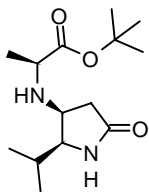




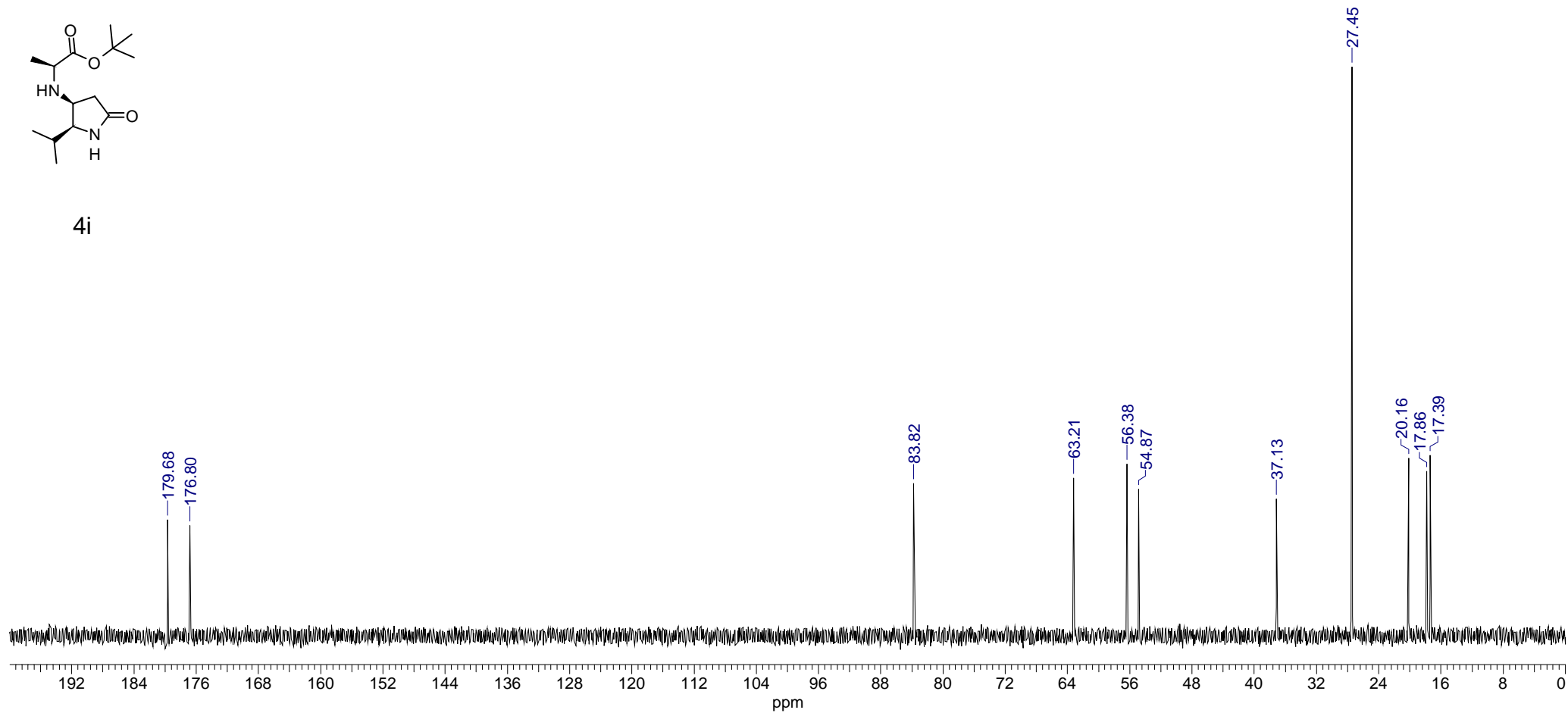
4h

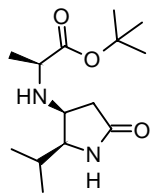




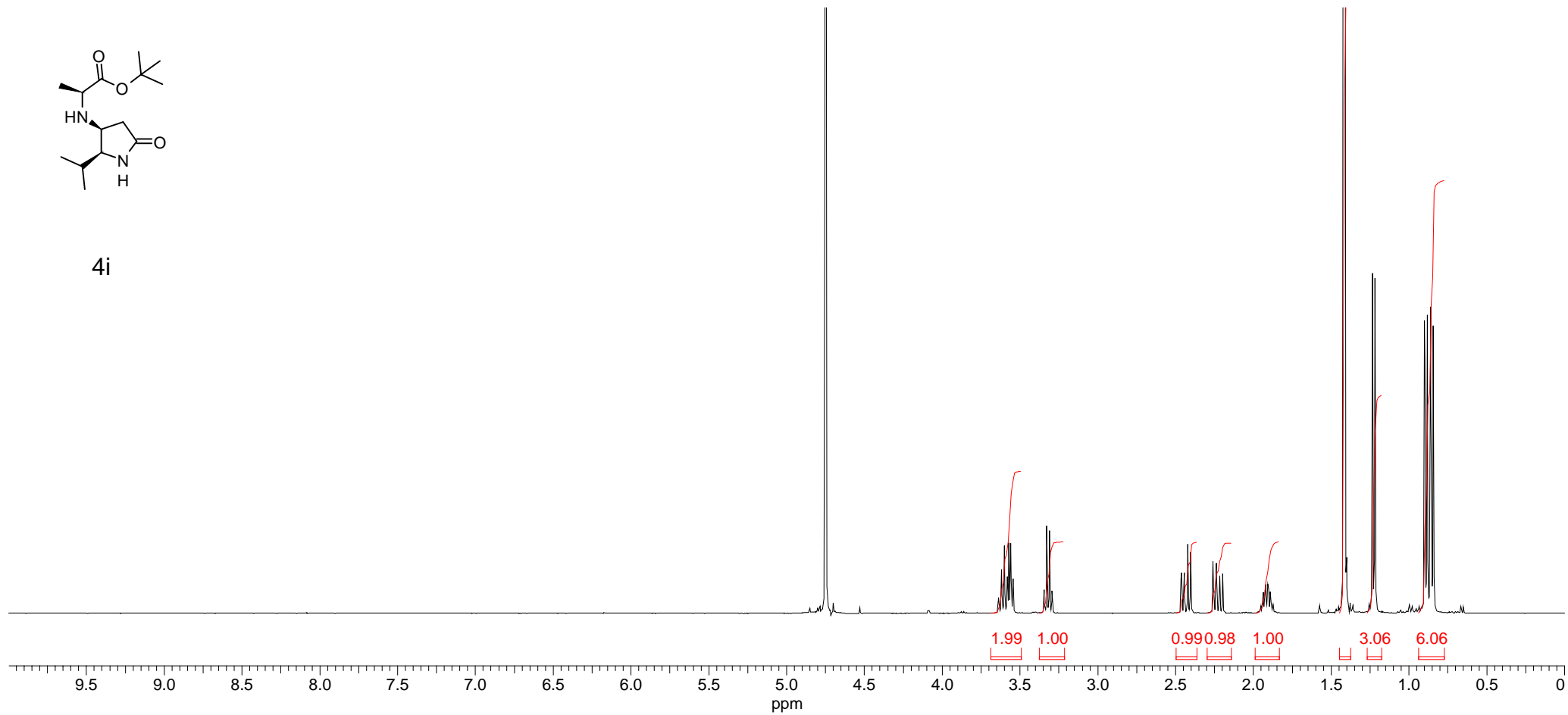


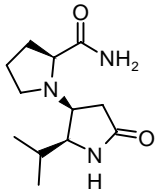
4i



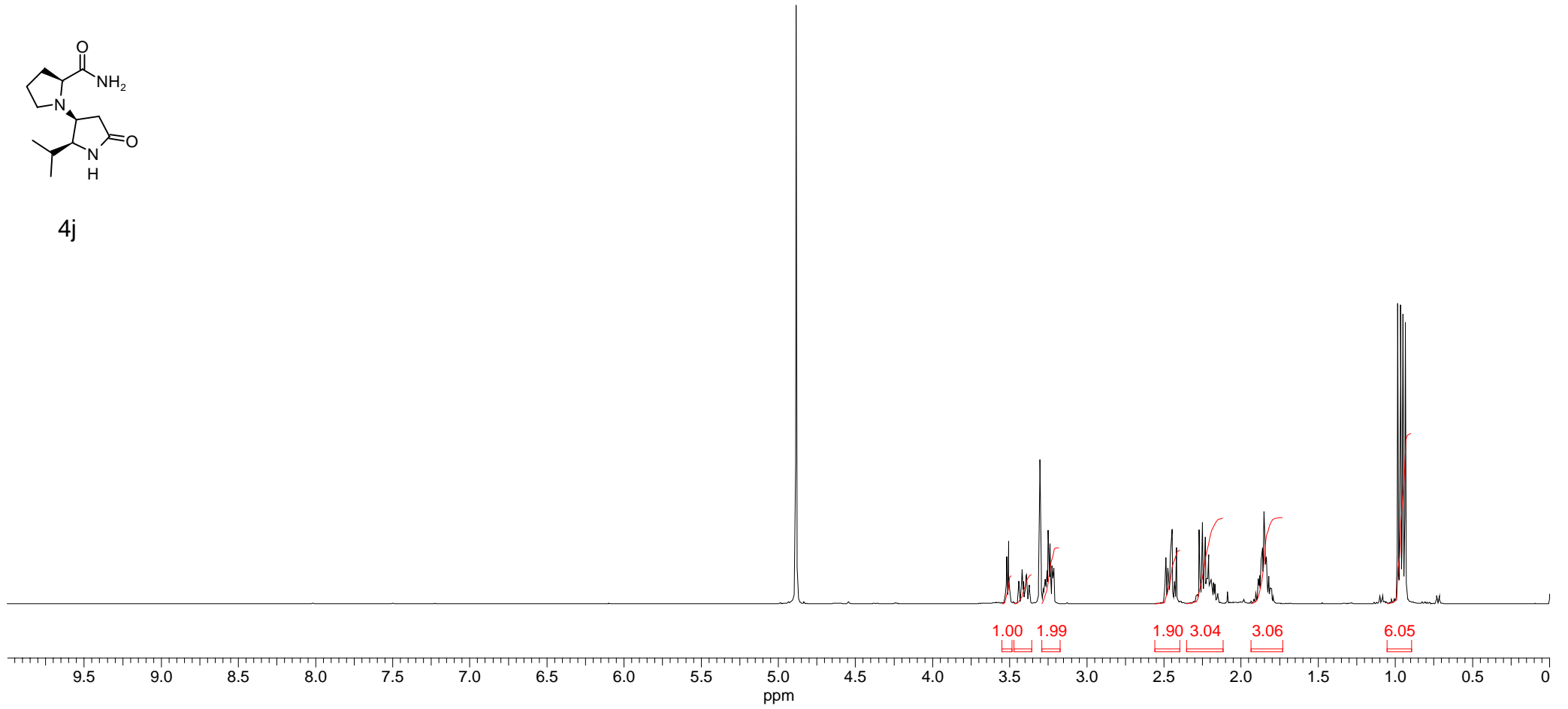


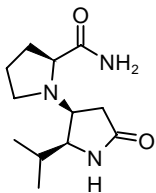
4i



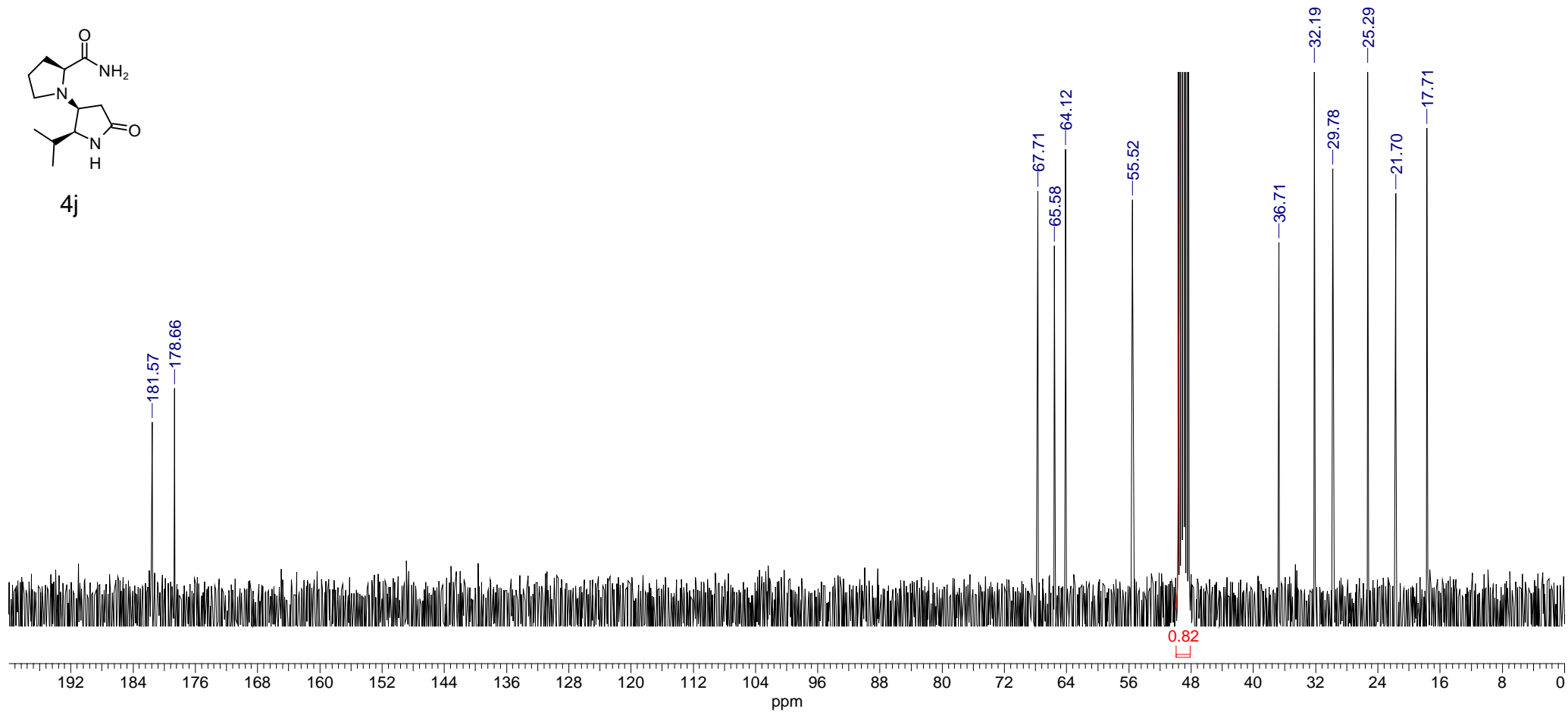


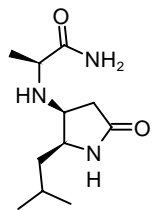
4j



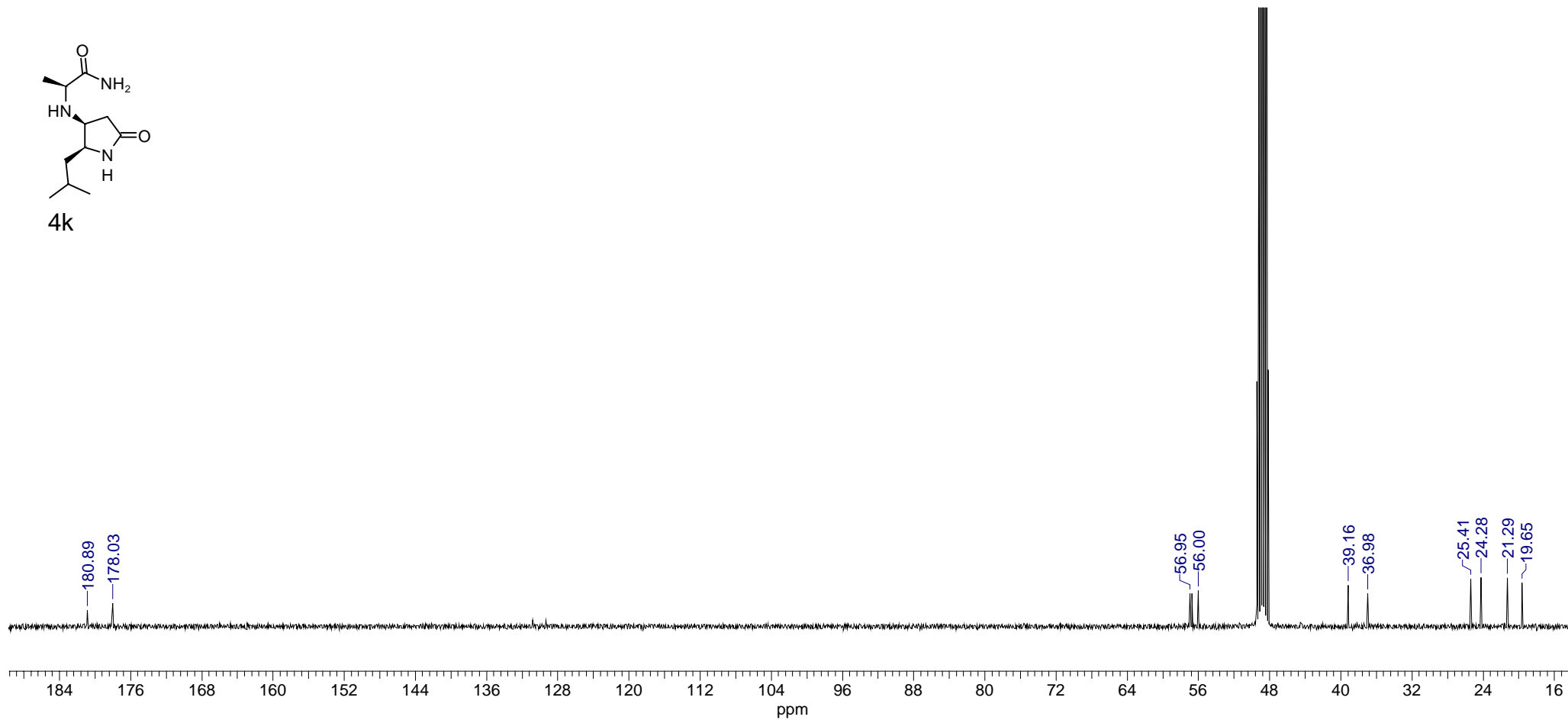


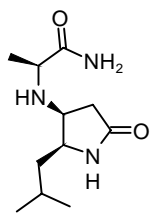
4j



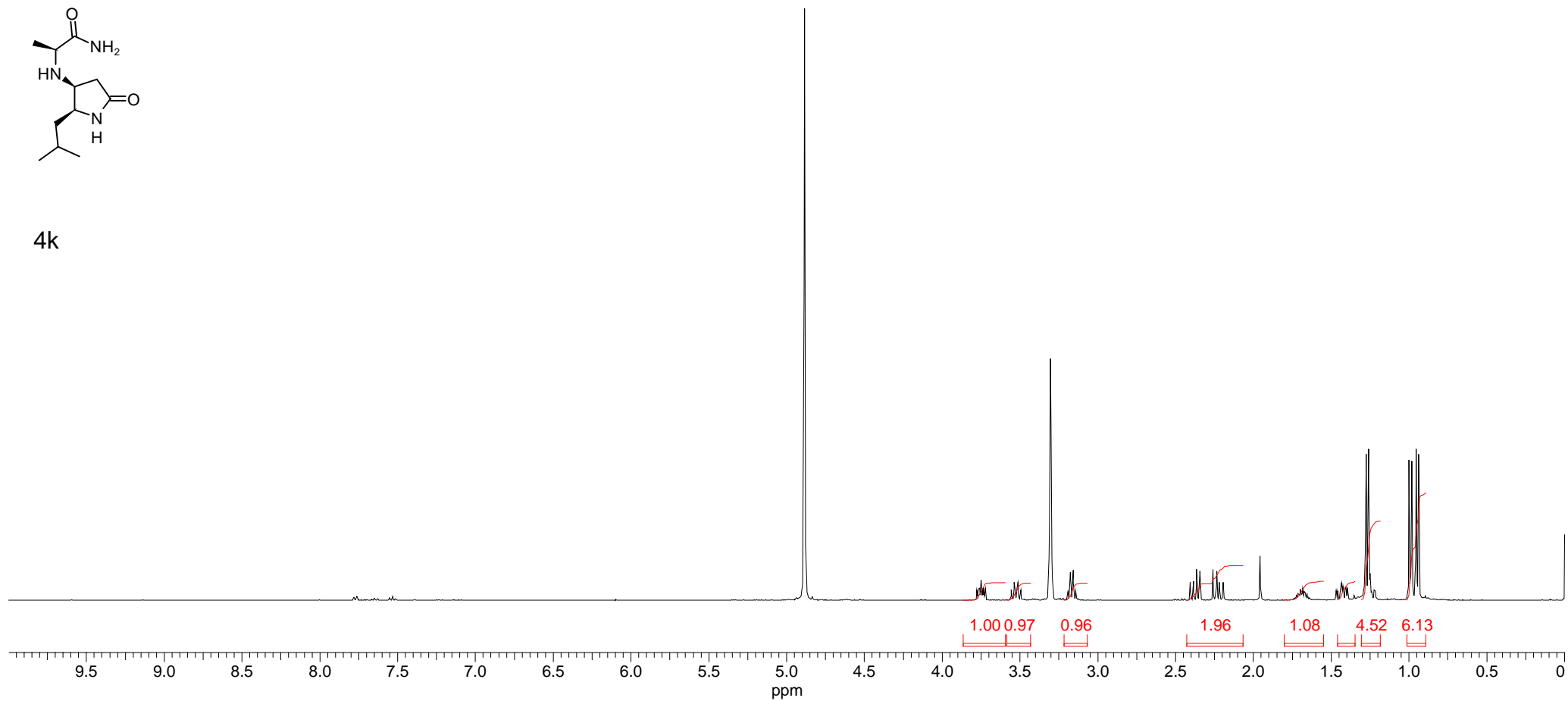


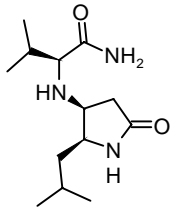
4k



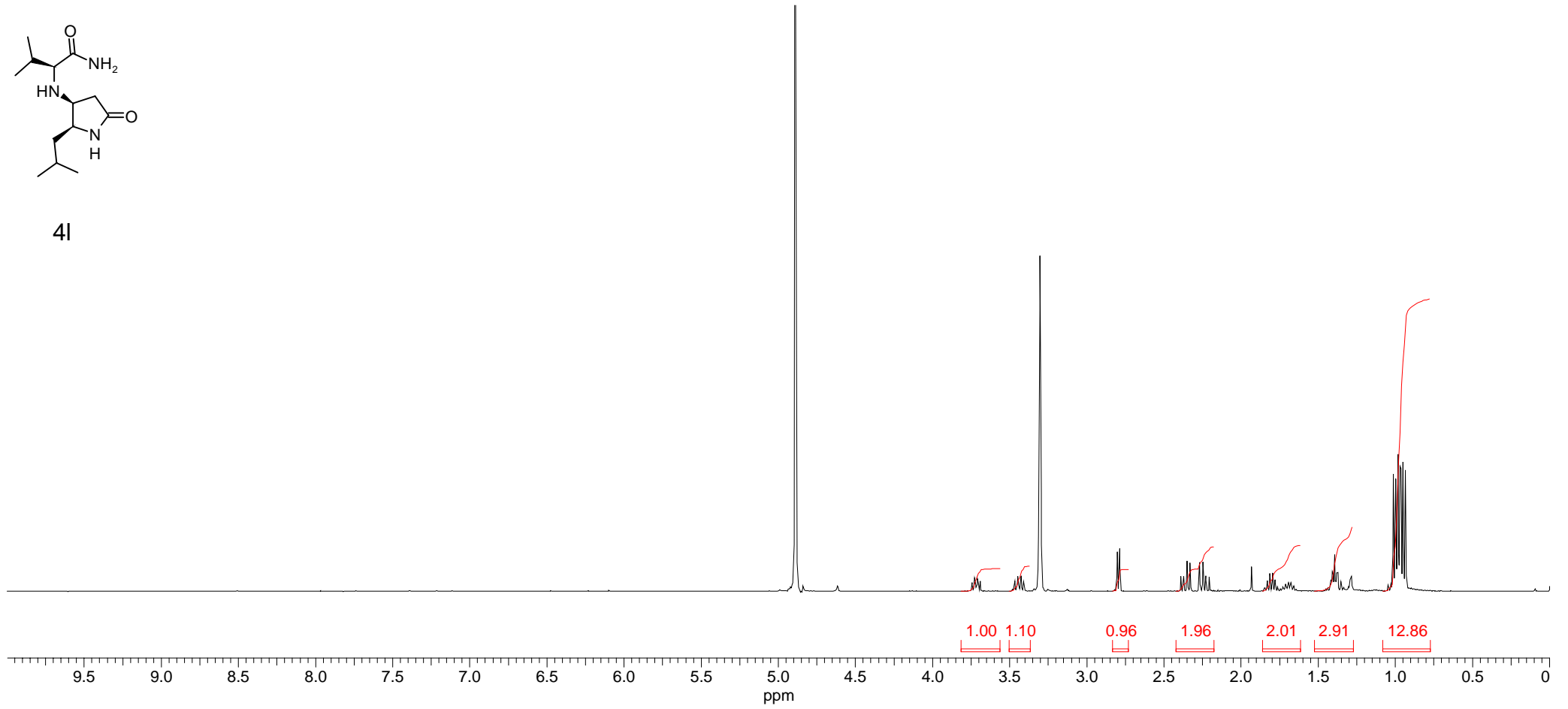


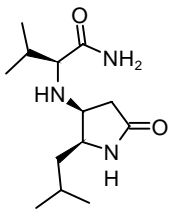
4k



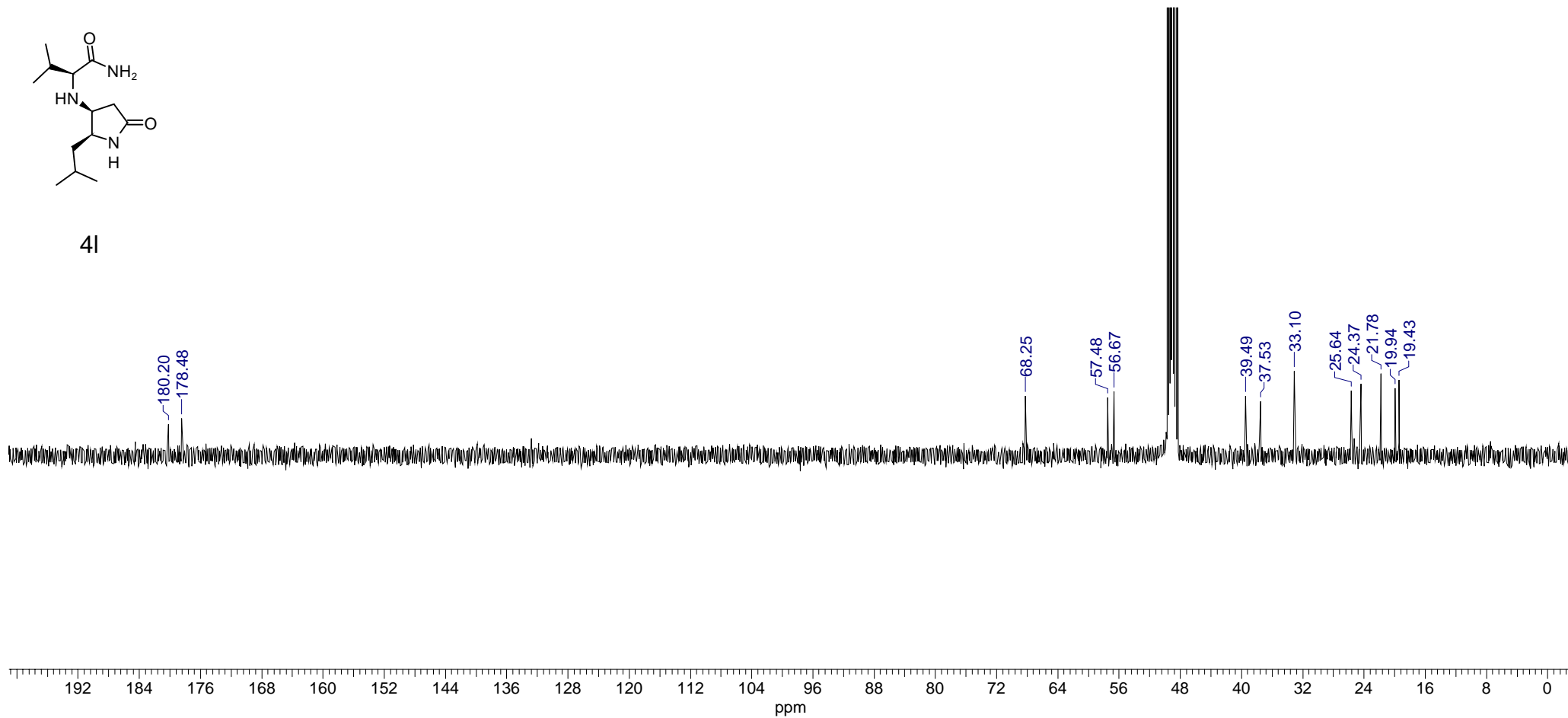


4l

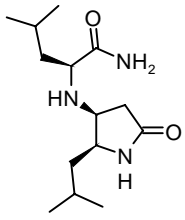




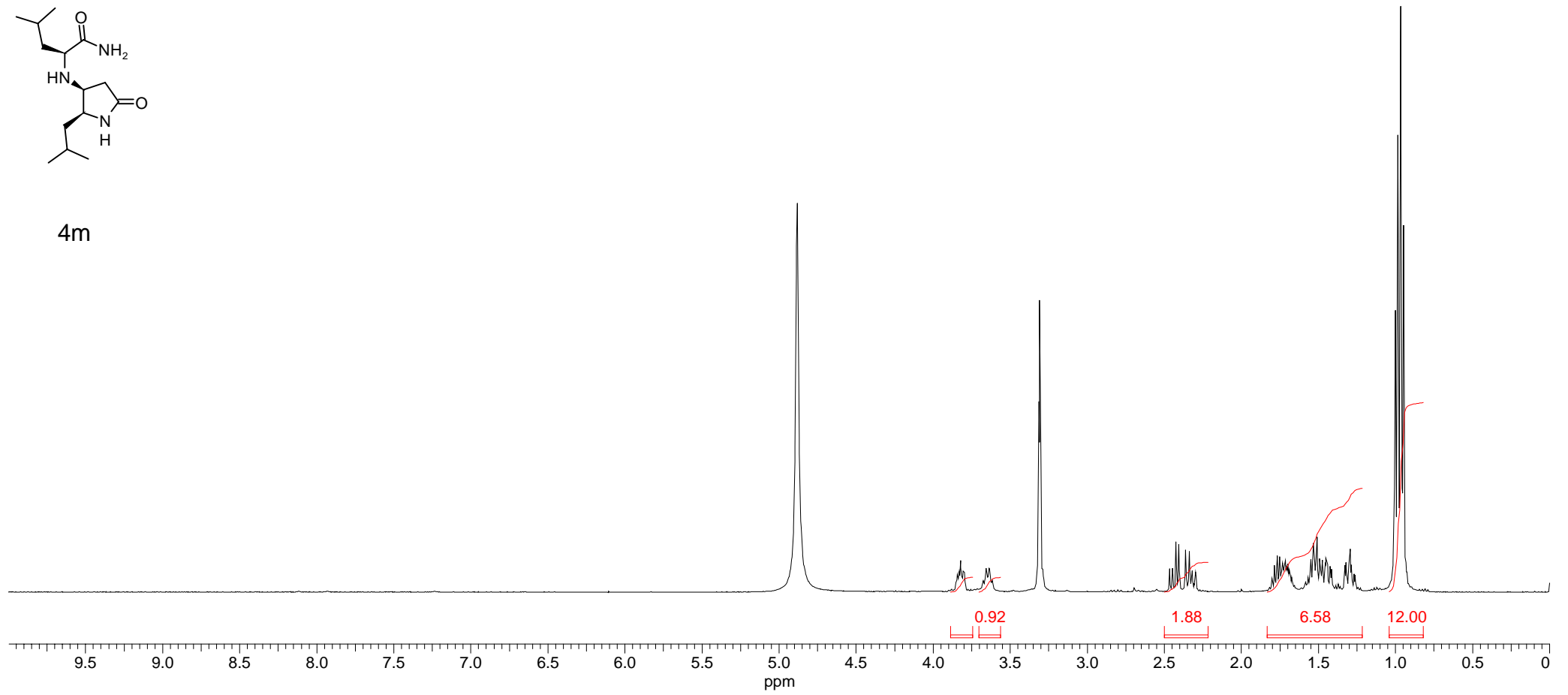
4l

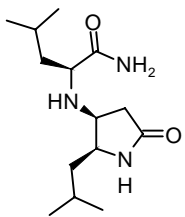




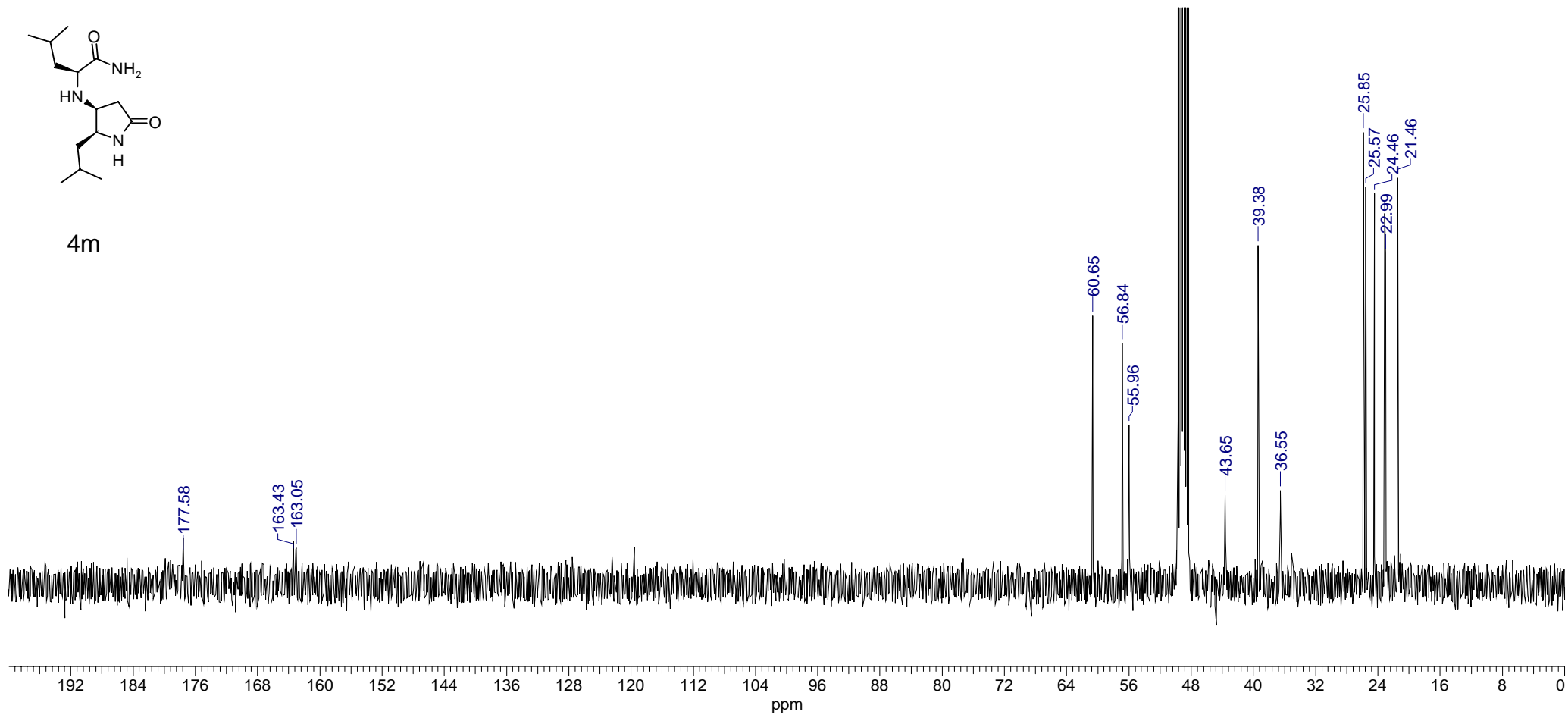


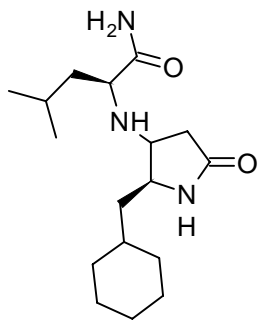
4m



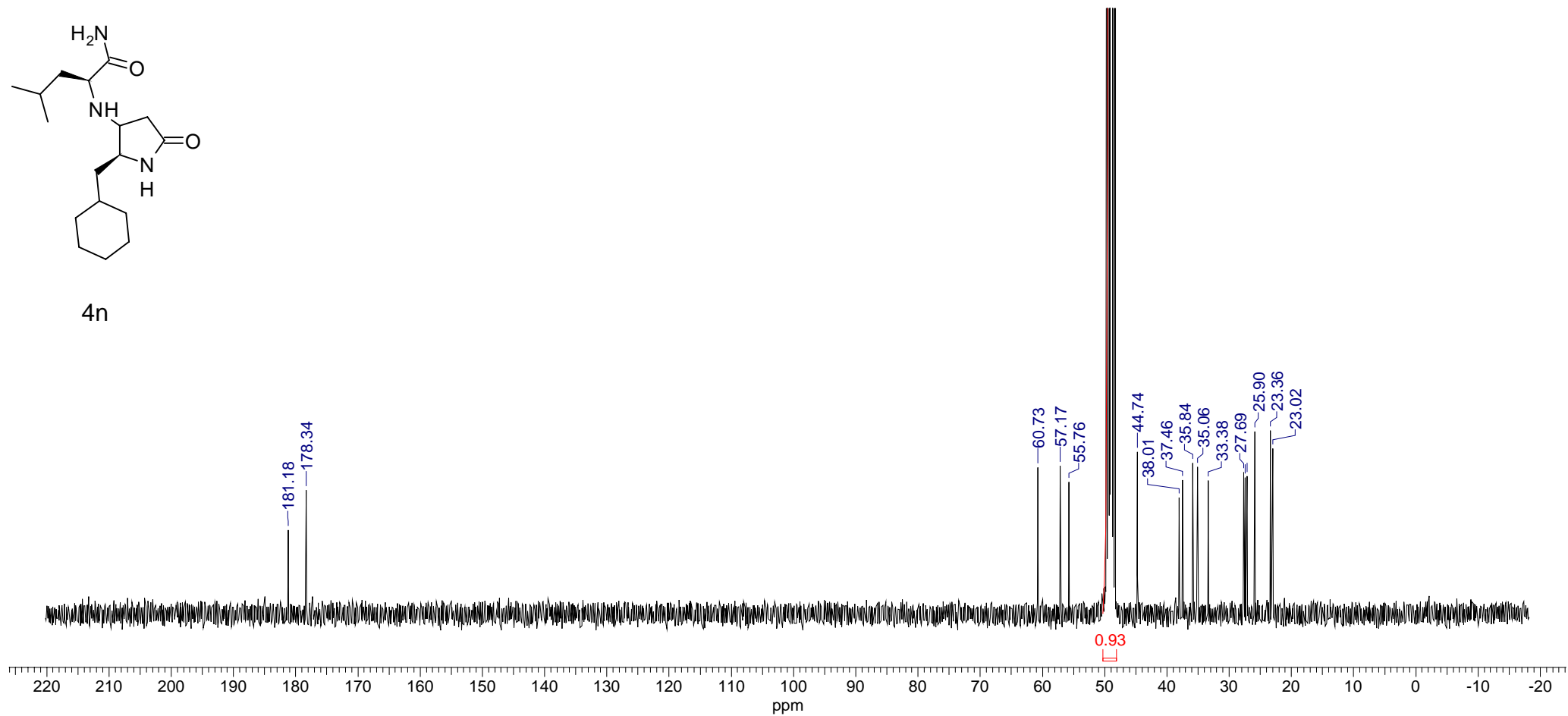


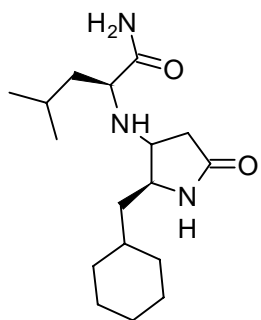
4m



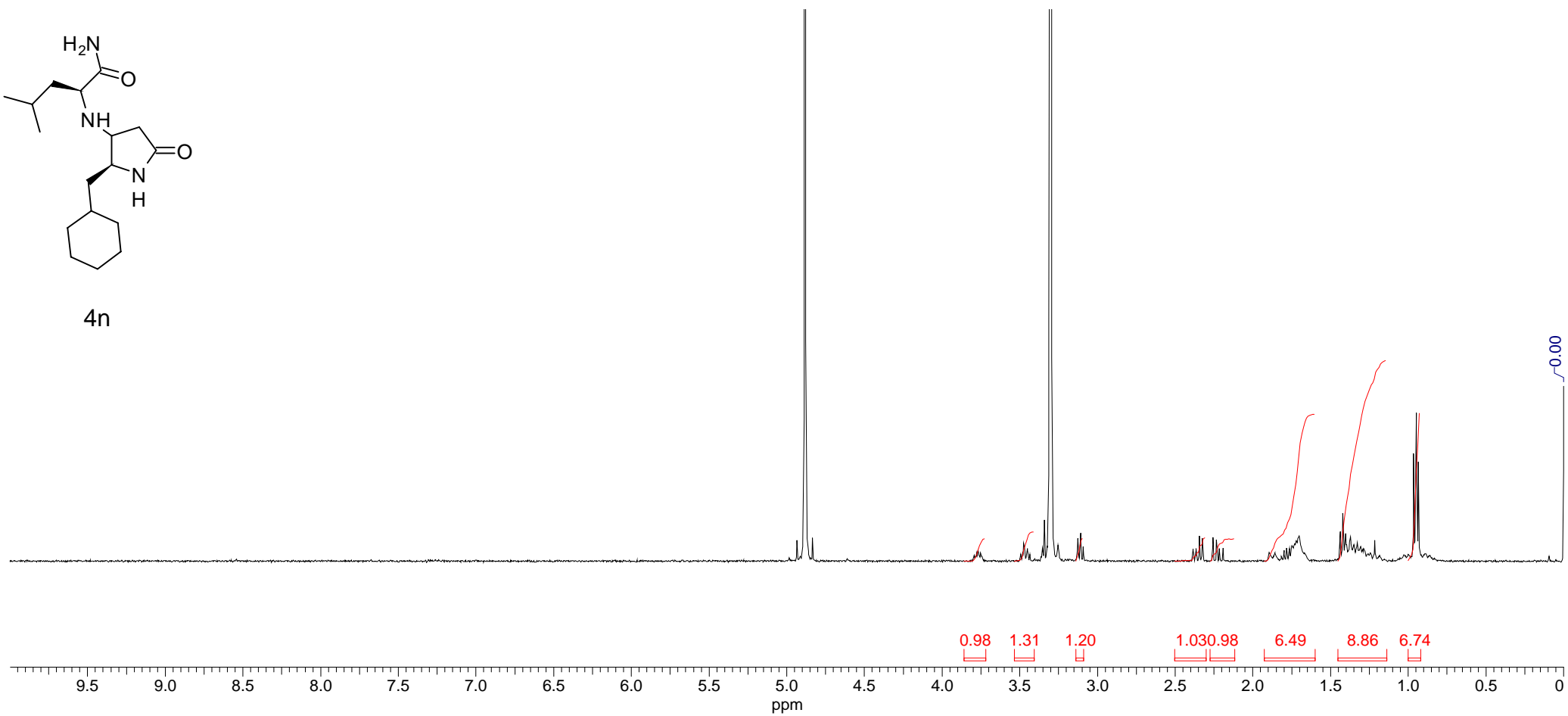


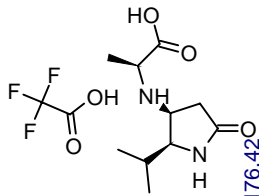
4n



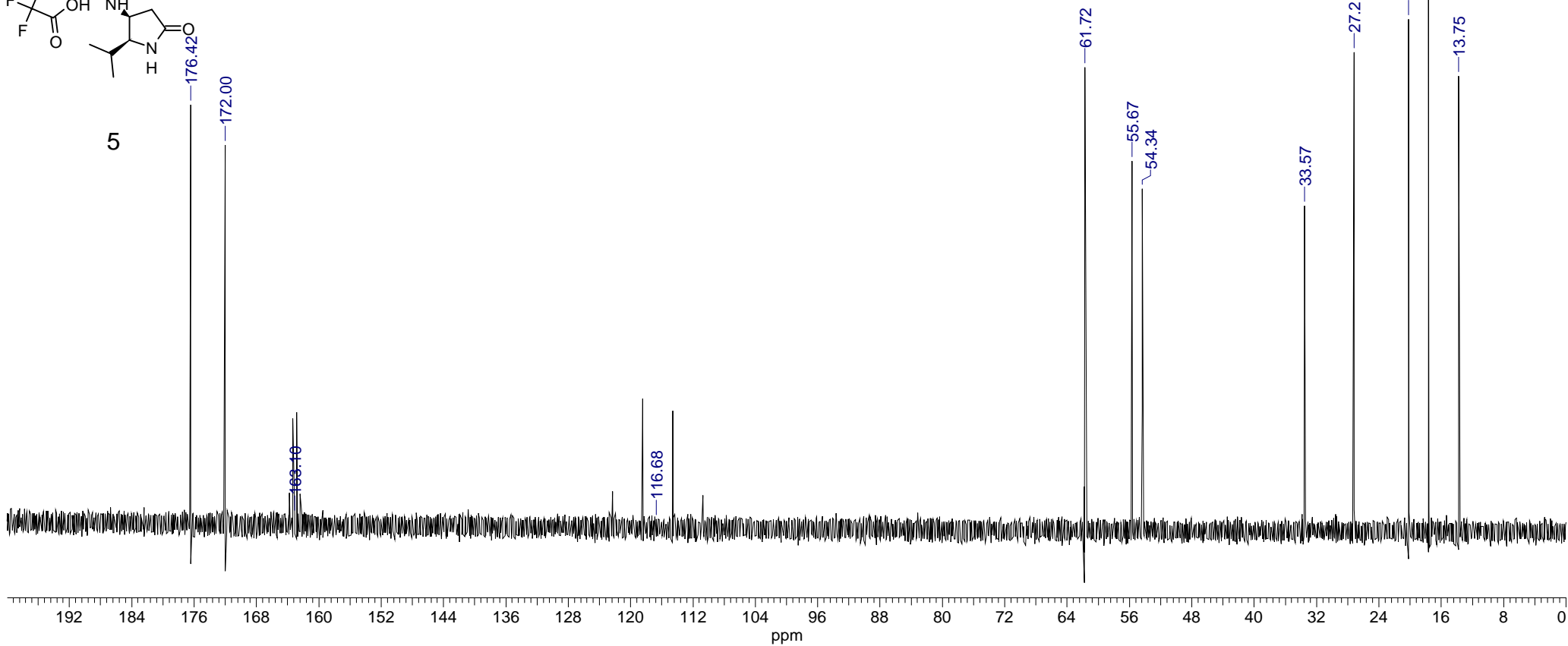


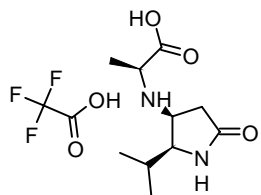
4n





5





5

