

Figure S1: Job plot for **3a** with acetate.

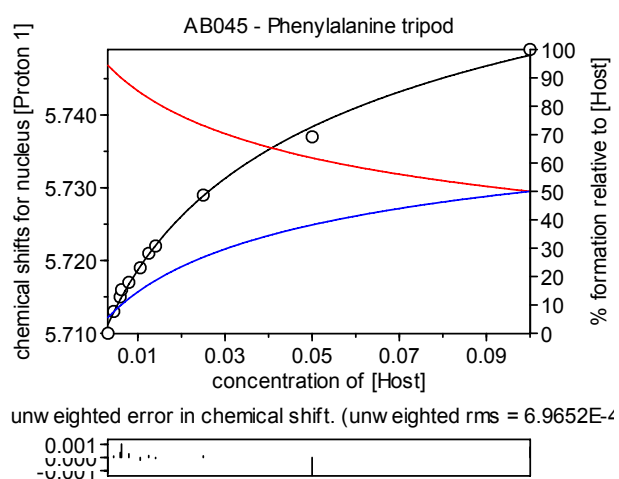


Fig. S2: Self Association in **3a**

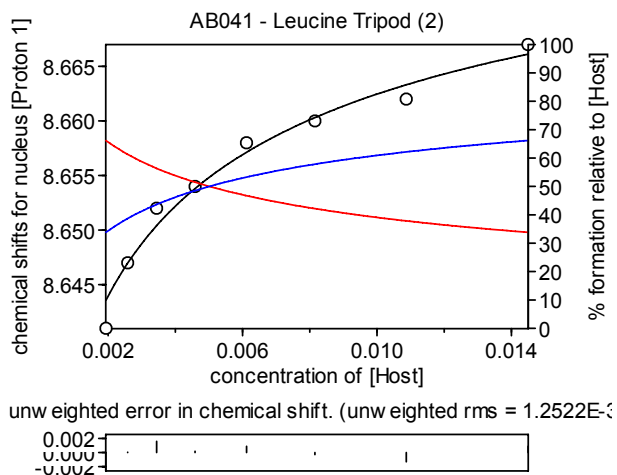


Fig. S3: Self Association in **3b**

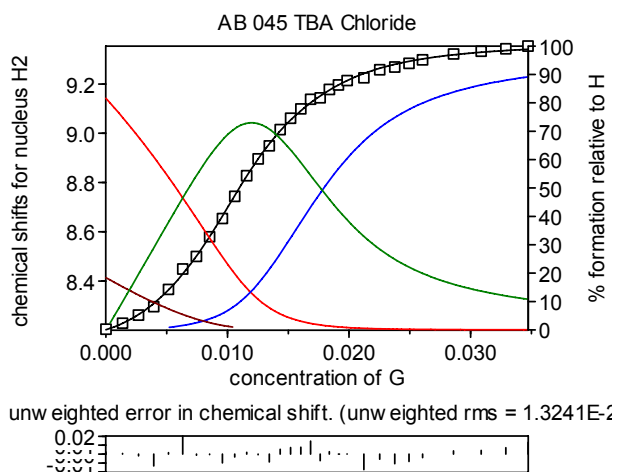


Fig. S4:  $\text{Cl}^-$  binding by **3a**

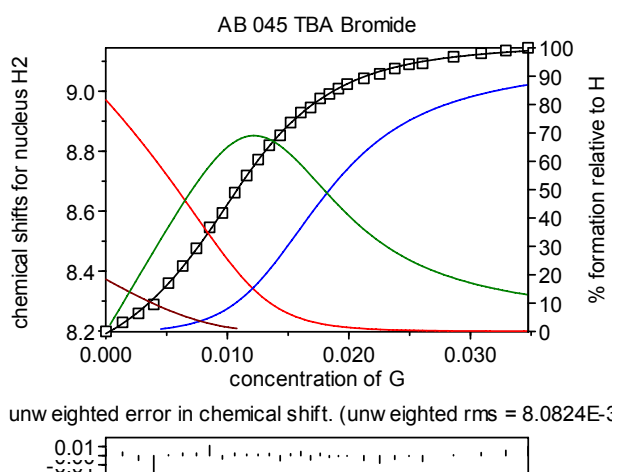


Fig. S5:  $\text{Br}^-$  binding by **3a**

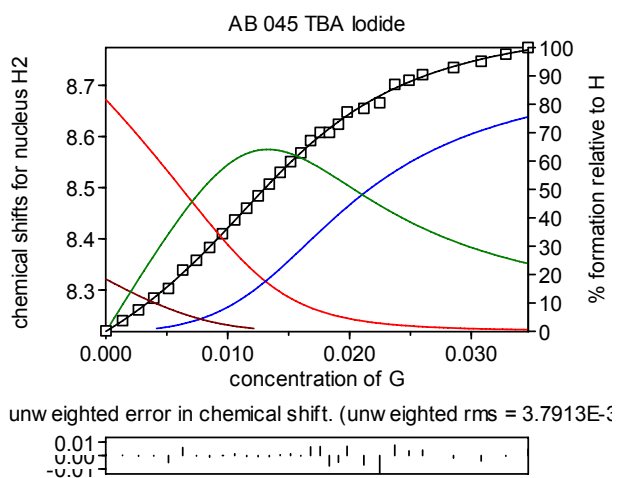


Fig. S6:  $\Gamma^-$  binding by **3a**

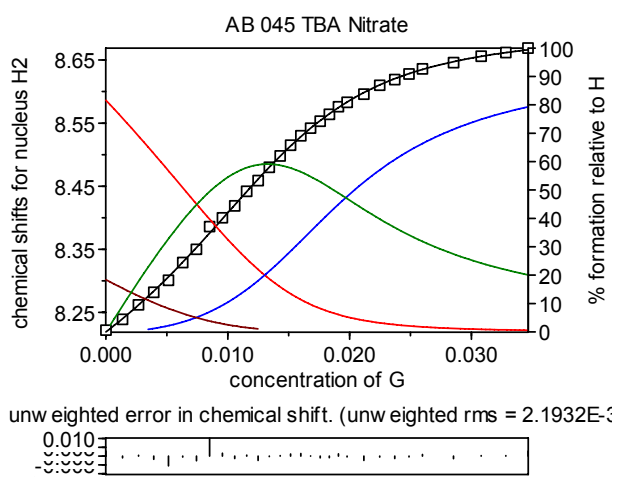


Fig. S7:  $\text{NO}_3^-$  binding by **3a**

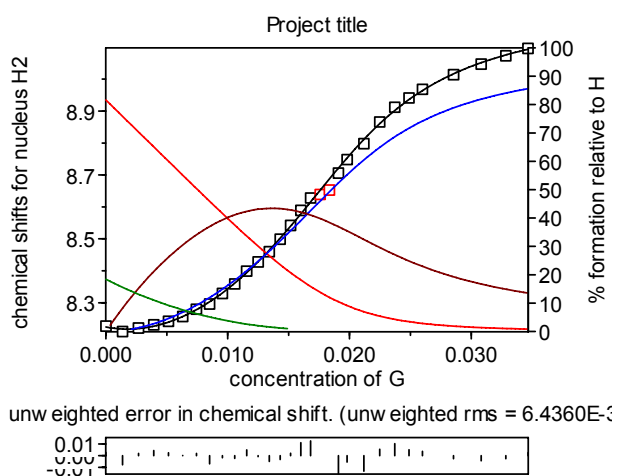


Fig. S8:  $\text{MeCO}_2^-$  binding by **3a**

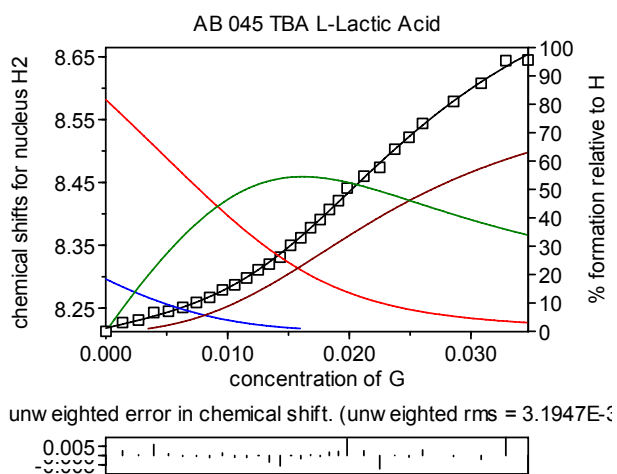


Fig. S9: L-lactate binding by **3a**

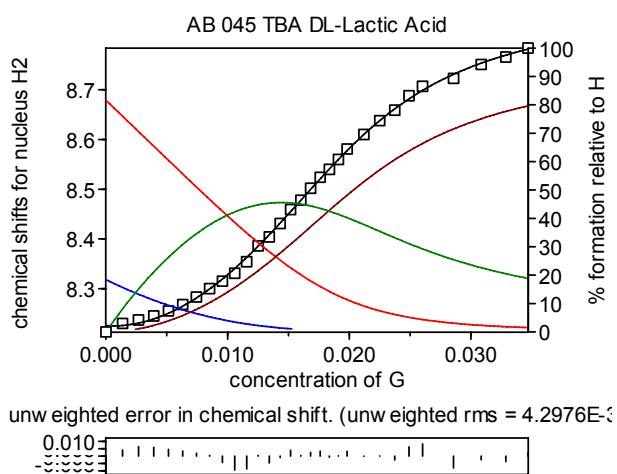


Fig. S10: racemic lactate binding by **3a**

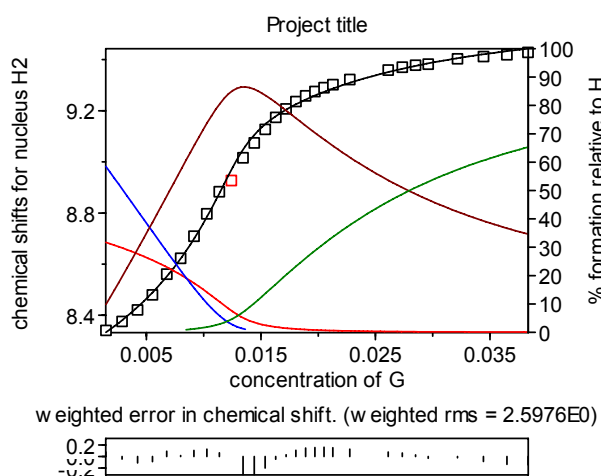


Fig. S11: Cl<sup>-</sup> binding by **3b**

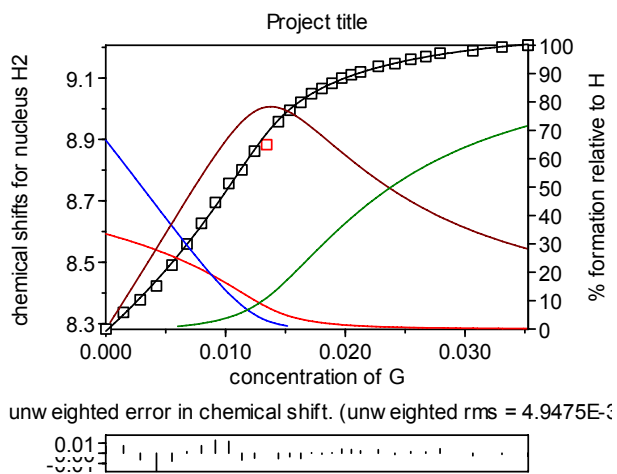


Fig. S12: Br<sup>-</sup> binding by **3b**

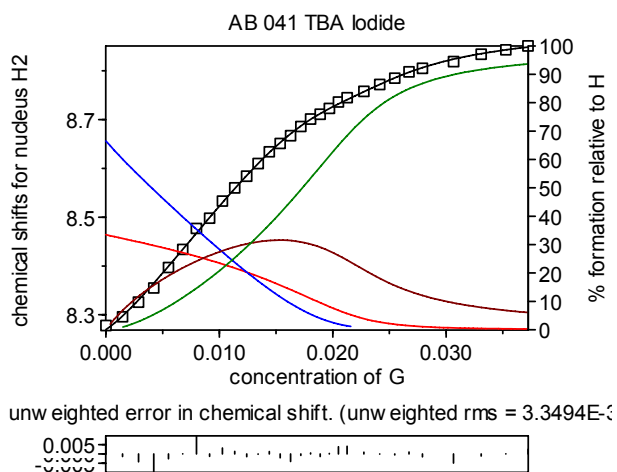


Fig. S13: I<sup>-</sup> binding by **3b**

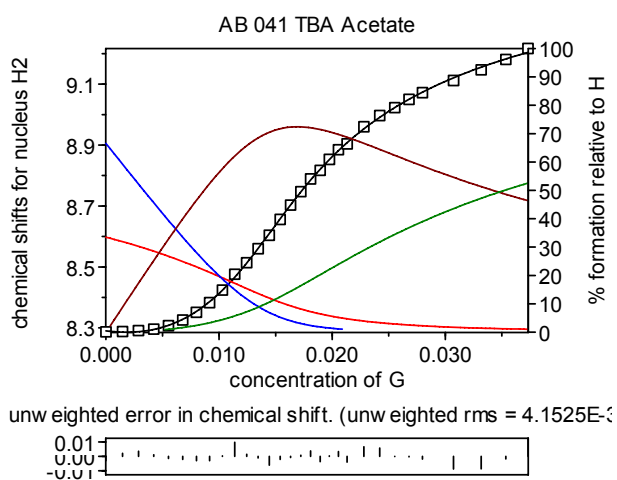


Fig. S14: MeCO<sub>2</sub><sup>-</sup> binding by **3b**

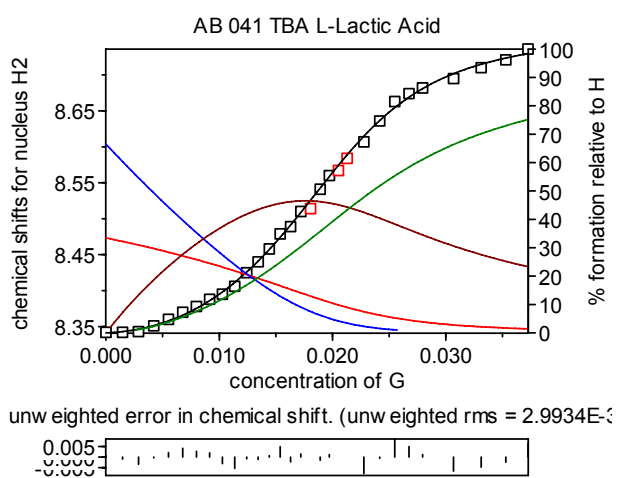


Fig. S15: L-lactate binding by **3b**

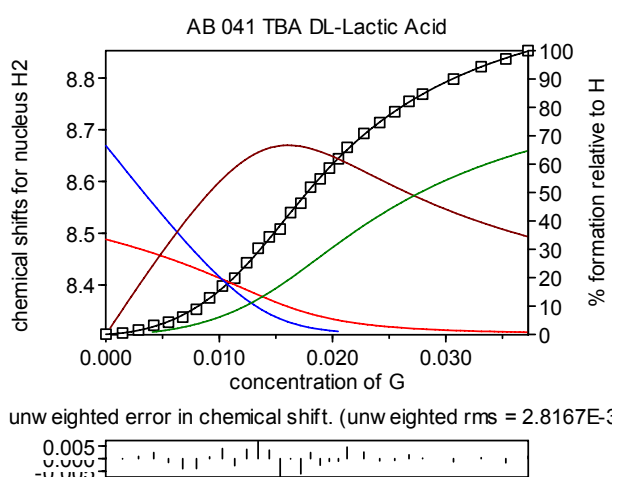


Fig. S16: racemic lactate binding by **3b**

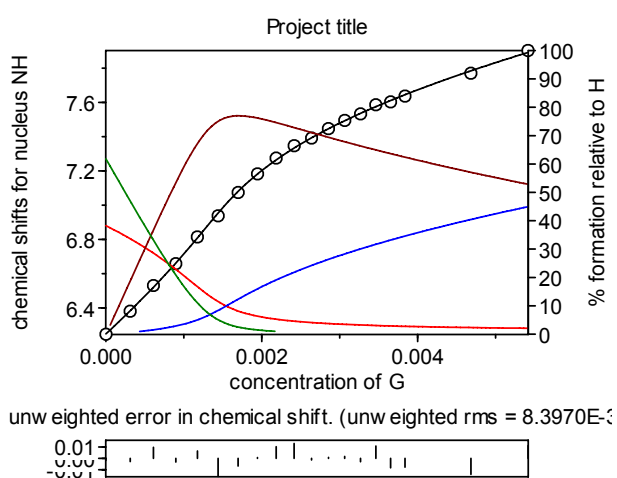


Fig. S17: Chloride binding by **4b**

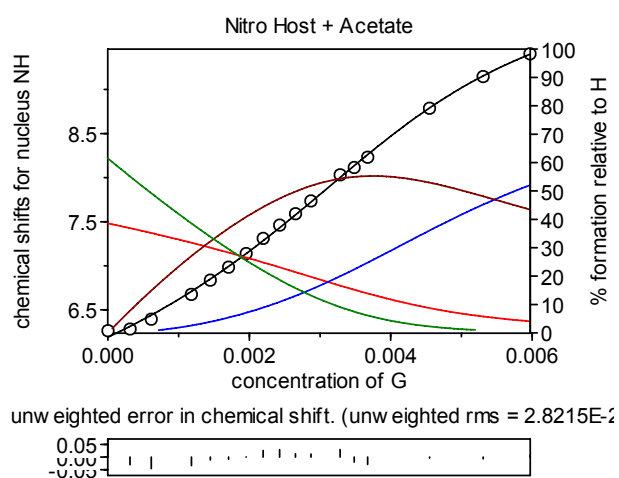


Fig. S18: Acetate binding by **4b**

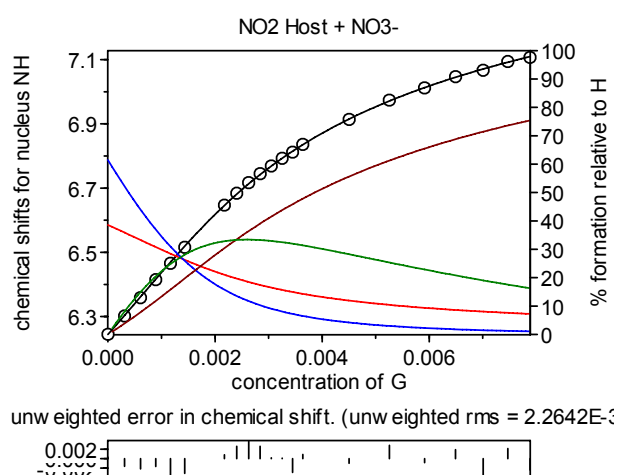


Fig. S19: NO<sub>3</sub><sup>-</sup> binding by **4b**

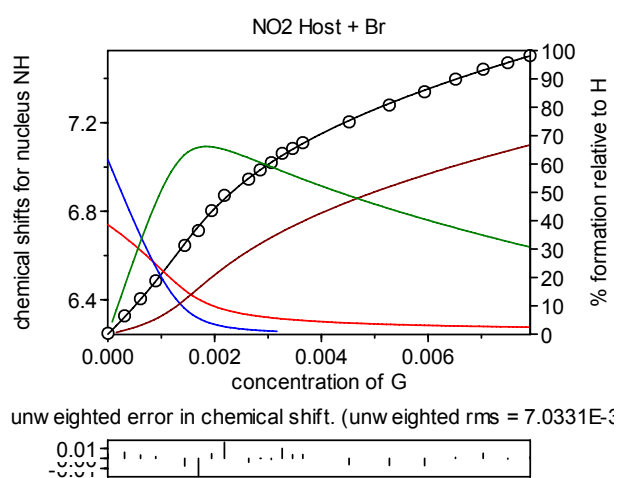


Fig. S20: Br<sup>-</sup> binding by **4b**

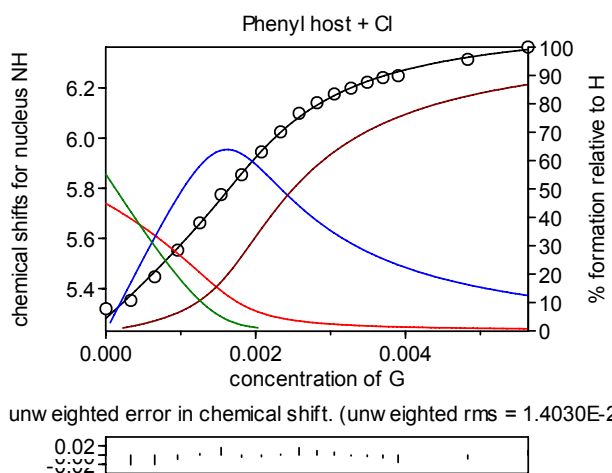


Fig. S21: Cl<sup>-</sup> binding by **4a**

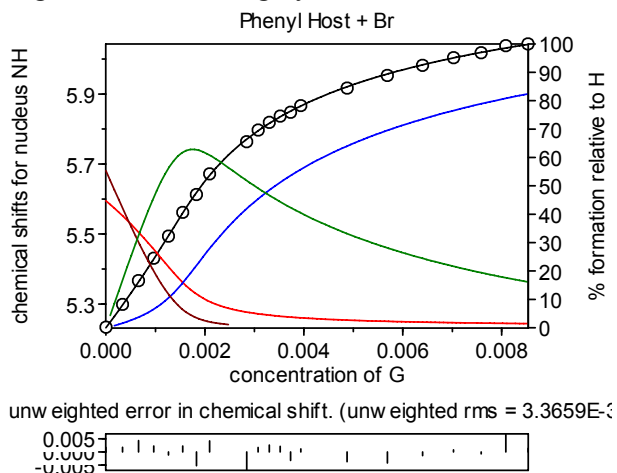


Fig. S22: Br<sup>-</sup> binding by **4a**

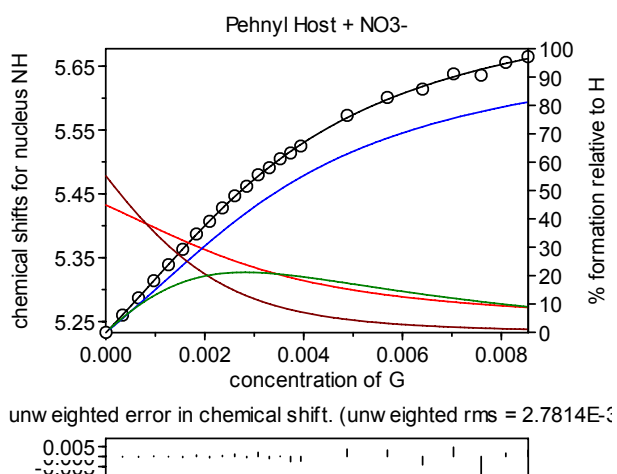


Fig. S23: NO<sub>3</sub><sup>-</sup> binding by **4a**



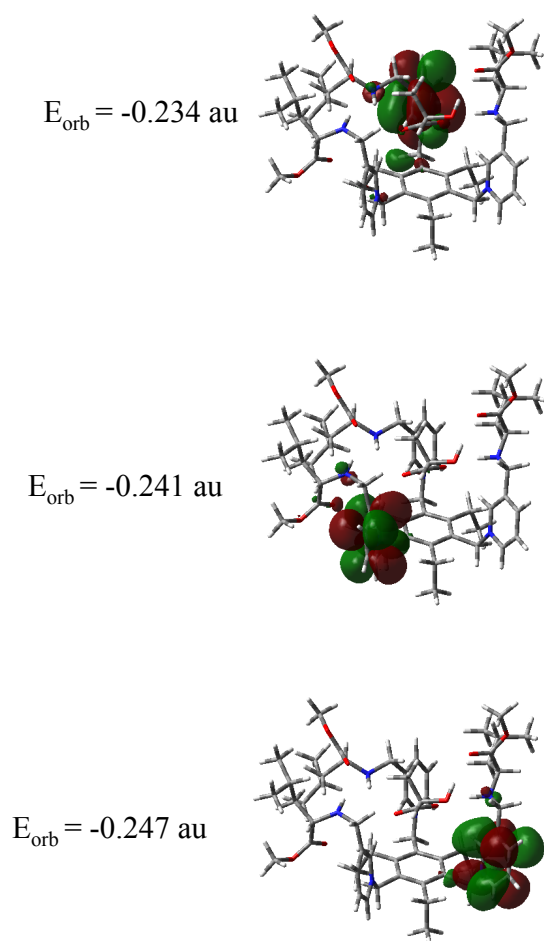


Fig S24: LUMOs from TD DFT calculations.

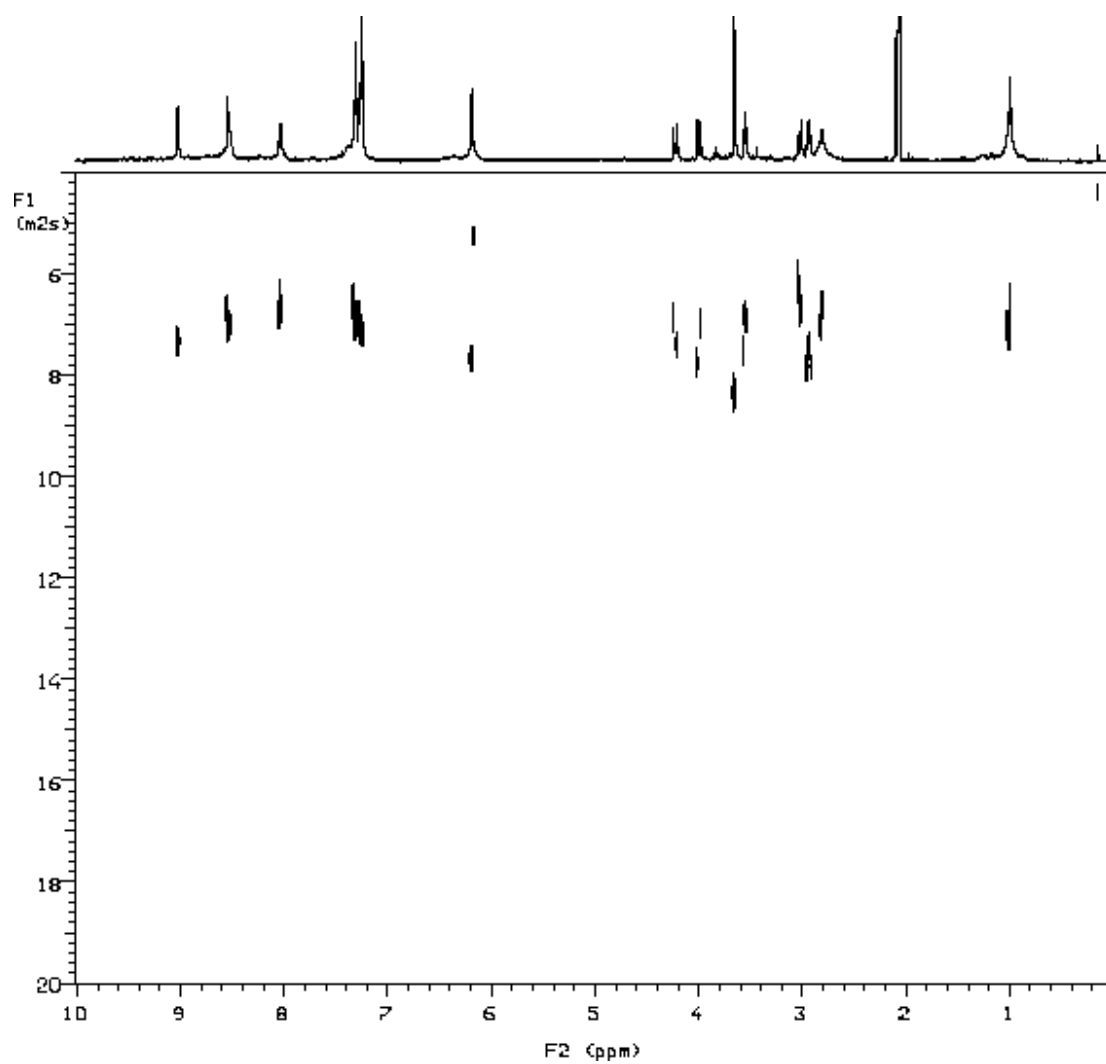


Fig S25 DOSY spectrum for **3a**

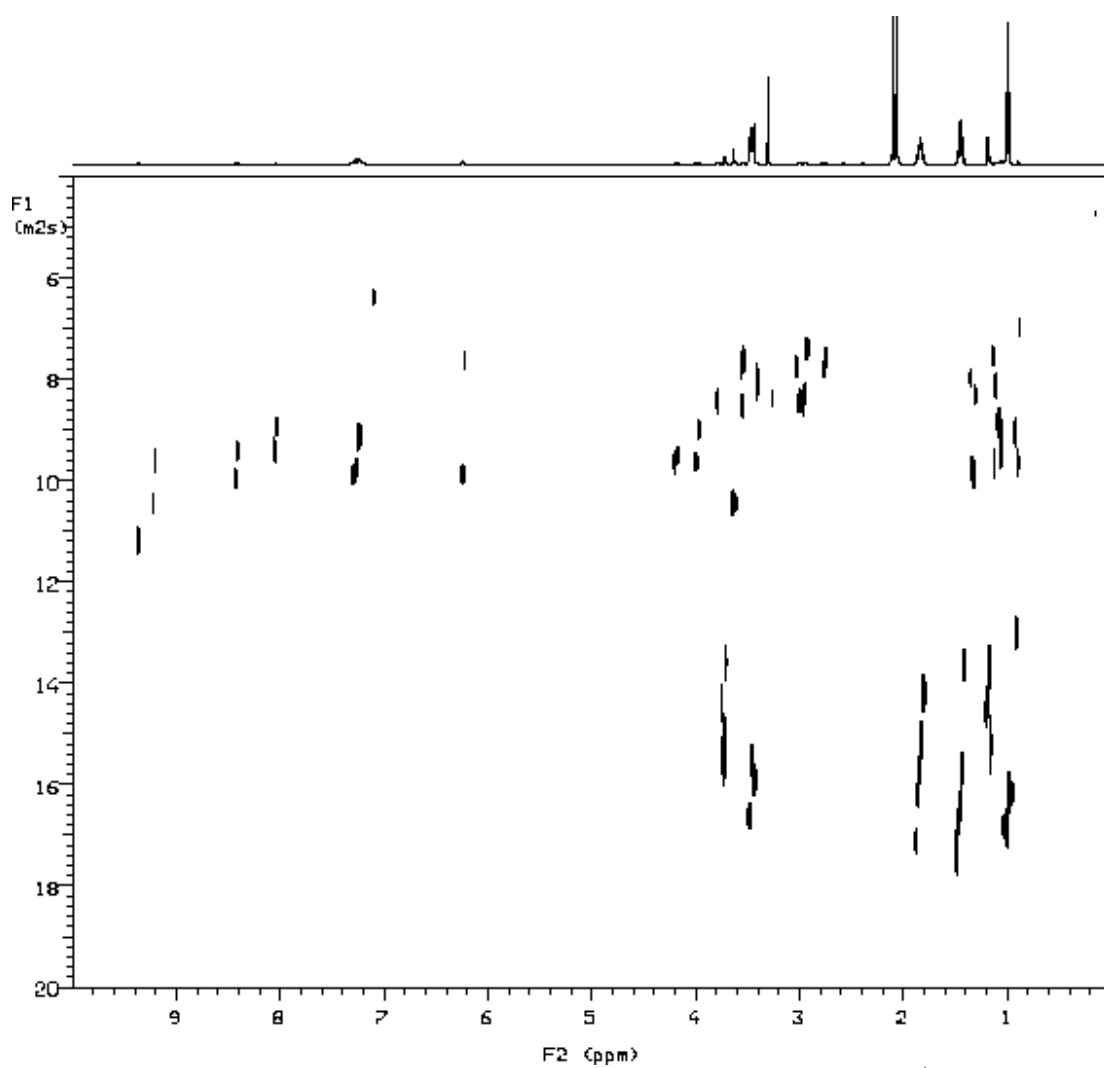


Fig S25 DOSY spectrum for **3a** in the presence of 3 equivalents of  $\text{NBu}_4^+$  lactate.