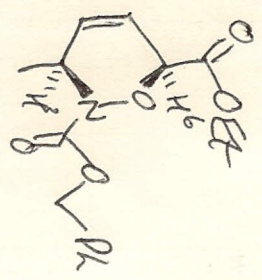


aromatic

CH₂CH₃



double bond

OCH₂R

OCH₂CH₃

ethyl acetate?

CH₃

CH₃-C=O

Experiment Data Parameters

NAME	: 1471.30
EXPNO	: 1469.66
PROCNO	: 1463.57
LBB	: 1105.55
RRU	: 1193.07
1	: 1181.29
2	: 1189.22
	: 1185.37
	: 1184.27
	: 1182.90
	: 1174.10

1060.42
1048.05
1041.17
1028.66
942.47
865.35
858.20
851.06
843.91

409.79
318.37
280.29
273.56
270.40
263.25
256.10



TMS

lab number AVS
 L.Bollans
 BBDAZF2
 proton.liv CDC13 {D:\Bruker\TOPSPIN} san 12



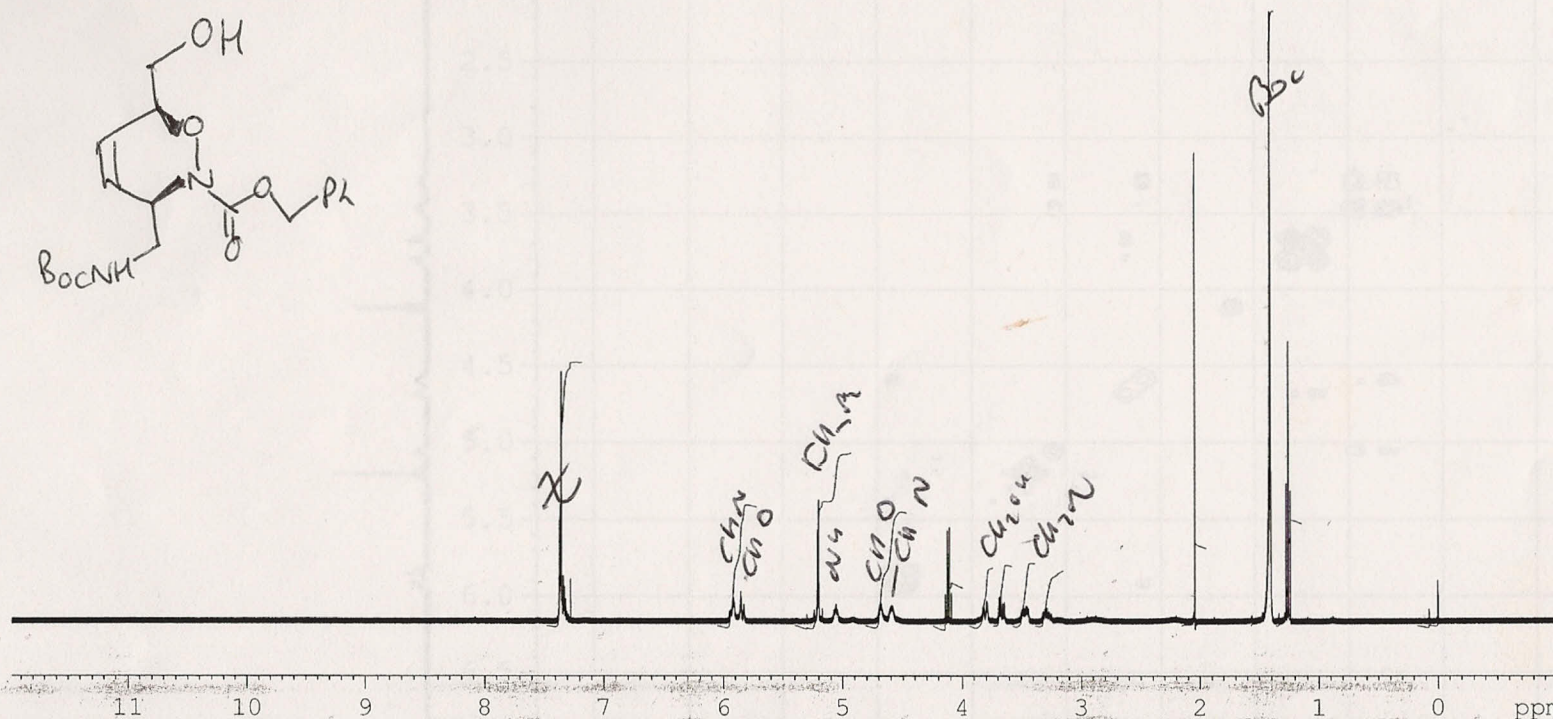
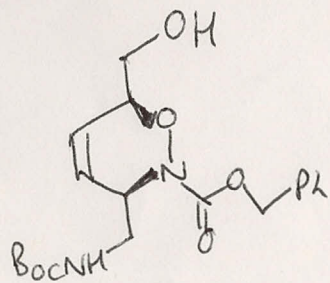
2946.01
 2941.53
 2936.75
 2934.52
 2933.01
 2931.23
 2928.39
 2926.10
 2923.76
 2910.27
 2367.25
 2341.95
 2331.23
 2095.89
 2083.07
 2080.12
 2067.59
 2023.09
 1872.08
 1836.05
 1658.71
 1651.48
 1644.36
 1637.28
 1530.20
 1517.92
 1475.72
 1469.66
 1462.76
 1457.37
 1392.98
 1389.15
 1385.32
 1381.49
 1320.17
 1313.28
 817.21
 562.65
 513.84
 510.04
 502.90
 495.75
 29.17
 -0.00

Current Data Parameters
 NAME Apr21-2008
 EXPNO 120
 PROCNO 1

F2 - Acquisition Parameters
 Date_ 20080421
 Time_ 12.34
 INSTRUM spect
 PROBHD 5 mm QNP 1H/13
 PULPROG zg
 TD 32768
 SOLVENT CDC13
 NS 64
 DS 2
 SWH 6218.905 Hz
 FIDRES 0.189786 Hz
 AQ 2.6345973 sec
 RG 1
 DW 80.400 usec
 DE 6.00 usec
 TE 296.0 K
 D1 2.00000000 sec
 TDO 1

===== CHANNEL f1 =====
 NUC1 1H
 P1 13.25 usec
 PL1 3.00 dB
 SFO1 400.1325018 MHz

F2 - Processing parameters
 SI 65536
 SF 400.1300038 MHz
 WDW GM
 SSB 0
 LB -0.50 Hz
 GB 0.3
 PC 1.00



15.10
 6.82
 9.92
 6.46
 2.17
 3.34
 3.42
 3.59
 3.18
 4.47
 35.46
 5.86
 0.23

lab number AVS

L.Bollans

BBDAZF1

proton.liv CDCl3 {D:\Bruker\TOPSPIN} san 13



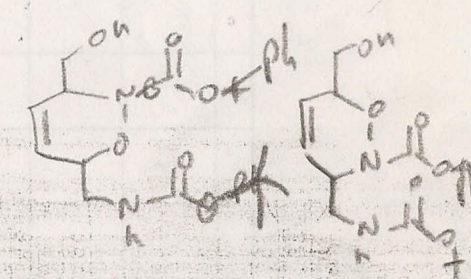
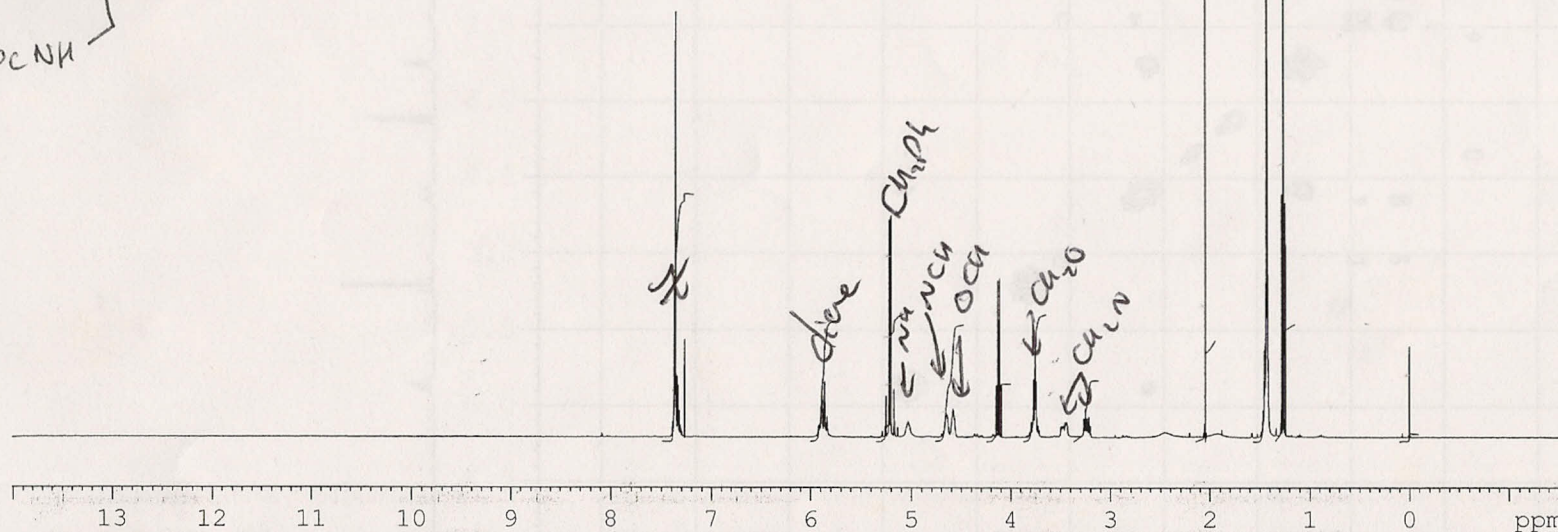
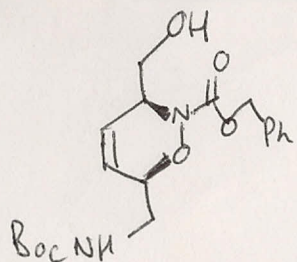
Current Data Parameters
NAME Apr21-2008
EXPNO 130
PROCNO 1

F2 - Acquisition Parameters
Date 20080421
Time 12.48
INSTRUM spect
PROBHD 5 mm QNP 1H/13
PULPROG zg
TD 32768
SOLVENT CDCl3
NS 64
DS 2
SWH 6218.905 Hz
FIDRES 0.189786 Hz
AQ 2.6345973 sec
RG 1
DW 80.400 usec
DE 6.00 usec
TE 296.0 K
D1 2.00000000 sec
TD0 1

===== CHANNEL f1 =====
NUC1 1H
P1 13.25 usec
PL1 3.00 dB
SFO1 400.1325018 MHz

F2 - Processing parameters
SI 65536
SF 400.1300046 MHz
WDW GM
SSB 0
LB -0.50 Hz
GB 0.3
PC 1.00

2948.69
2947.37
2944.26
2937.31
2933.84
2909.51
2356.31
2344.97
2099.80
2087.22
2082.00
2069.73
1834.18
1658.86
1651.86
1644.79
1637.48
1506.14
1498.73
1495.68
1300.70
817.65
579.64
577.91
569.16
510.39
503.29
496.15
0.00



13 12 11 10 9 8 7 6 5 4 3 2 1 0 ppm

5.26
14.47
6.37
7.05
7.50
6.83
3.38
7.44
3.59
5.96
36.49
6.86
0.43

lab number AVS
 L.Bollans
 BnPSBoc1
 proton.liv CDC13 {D:\Bruker\TOPSPIN} san 32



Current Data Parameters
 NAME May09-2008
 EXPNO 320
 PROCNO 1

F2 - Acquisition Parameters
 Date_ 20080510
 Time_ 6.48
 INSTRUM spect
 PROBHD 5 mm QNP 1H/13
 PULPROG zg
 TD 32768
 SOLVENT CDC13
 NS 64
 DS 2
 SWH 6218.905 Hz
 FIDRES 0.189786 Hz
 AQ 2.6345973 sec
 RG 1
 DW 80.400 usec
 DE 6.00 usec
 TE 294.2 K
 D1 2.00000000 sec
 TD0 1

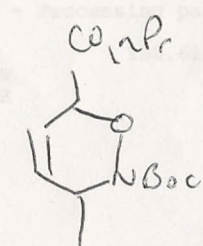
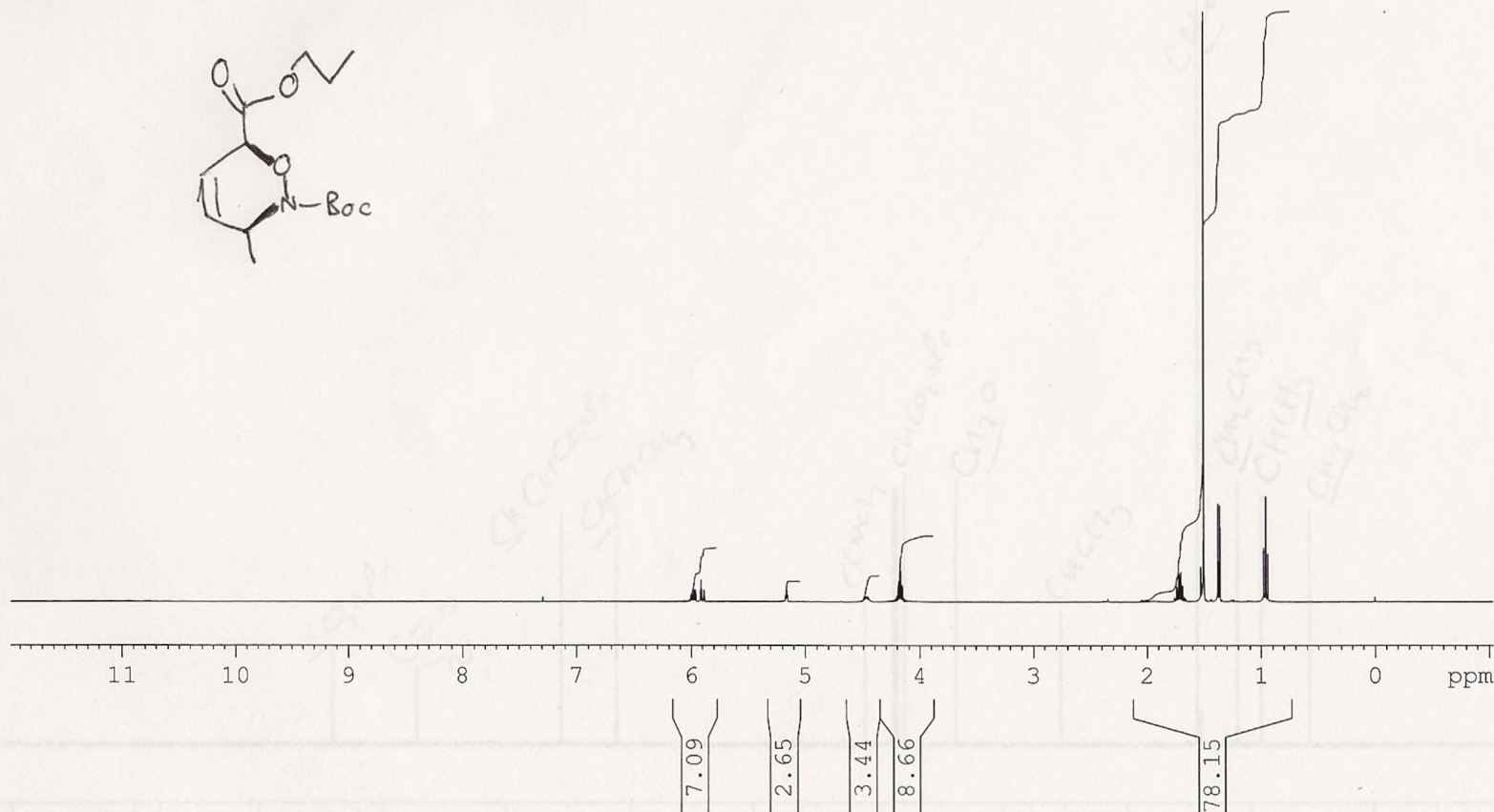
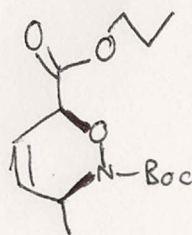
===== CHANNEL f1 =====
 NUC1 1H
 P1 13.25 usec
 PL1 3.00 dB
 SFO1 400.1325018 MHz

F2 - Processing parameters
 SI 65536
 SF 400.1299967 MHz
 WDW GM
 SSB 0
 LB -0.50 Hz
 GB 0.3
 PC 1.00

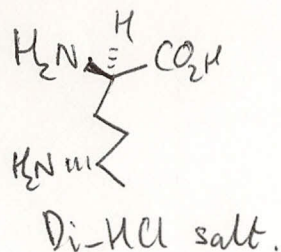
2392.58
 2389.97
 2388.03
 2385.47
 2367.74
 2366.20
 2364.61
 2355.98
 2065.74
 2064.10
 1677.41
 1674.87
 1670.65
 1668.20
 1663.93
 1661.50
 695.81
 688.85
 681.58
 674.57
 611.49
 600.52
 550.96
 544.21
 391.22
 383.80
 376.35

6.76
 6.67
 6.70

6.96
 7.17



lab number AVS
 L.Bollans
 B5-morn
 proton.liv D2O {D:\Bruker\TOPSPIN} san 20

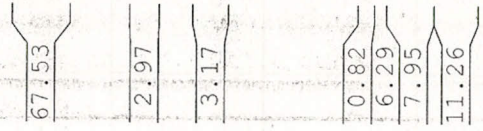
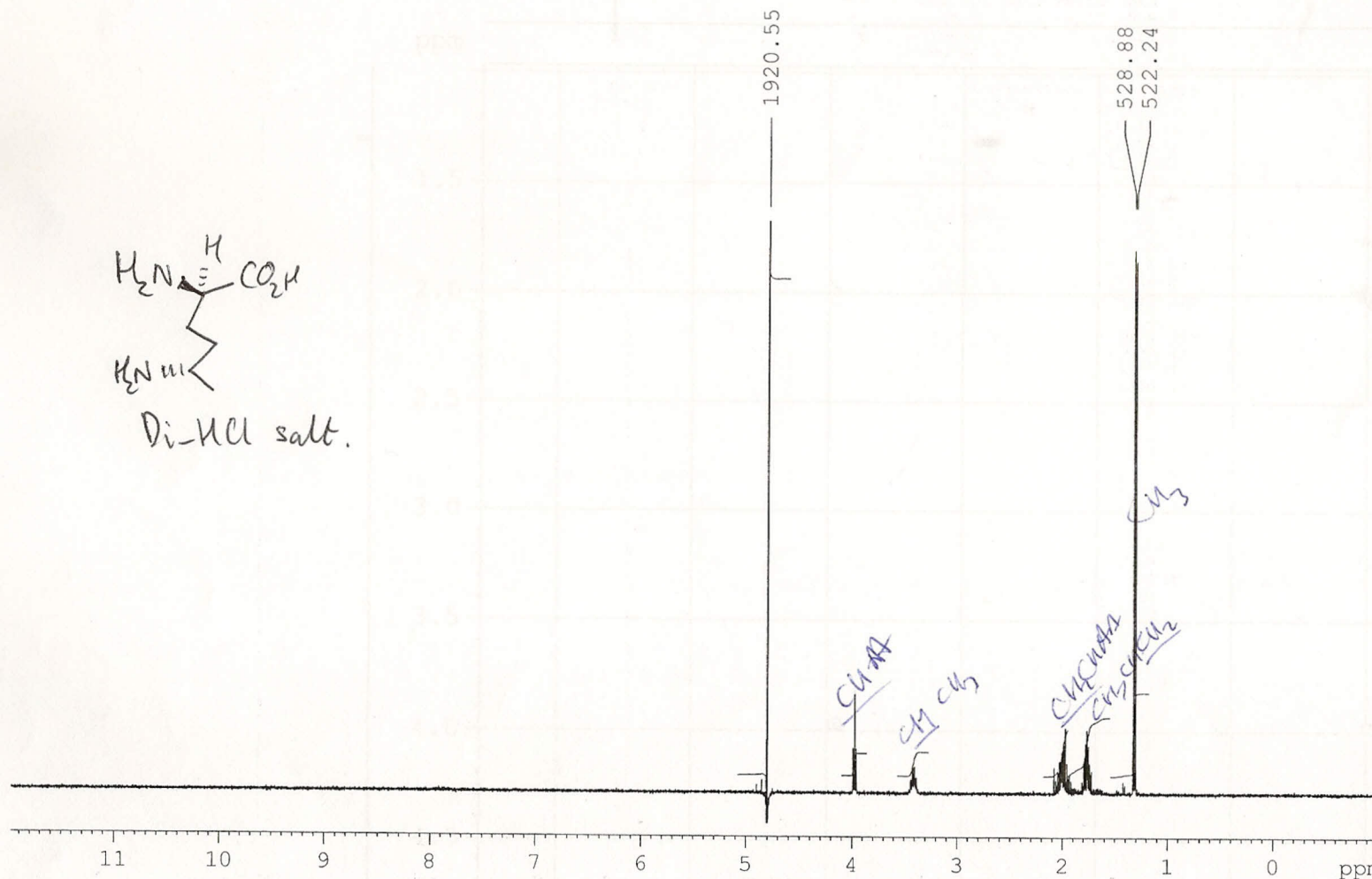


Current Data Parameters
 NAME Feb11-2008
 EXPNO 200
 PROCNO 1

F2 - Acquisition Parameters
 Date_ 20080211
 Time_ 18.11
 INSTRUM spect
 PROBHD 5 mm QNP 1H/13
 PULPROG zg
 TD 32768
 SOLVENT D2O
 NS 64
 DS 2
 SWH 6218.905 Hz
 FIDRES 0.189786 Hz
 AQ 2.6345973 sec
 RG 1
 DW 80.400 usec
 DE 6.00 usec
 TE 295.6 K
 D1 1.00000000 sec
 TDO 1

==== CHANNEL f1 =====
 NUC1 1H
 P1 13.25 usec
 PL1 3.00 dB
 SFO1 400.1325018 MHz

F2 - Processing parameters
 SI 65536
 SF 400.1300000 MHz
 WDW GM
 SSB 0
 LB -0.50 Hz
 GB 0.3
 PC 1.00



lab number AVS
 L.Bollans
 BMSBoc1
 proton.liv CDCl3 {D:\Bruker\TOPSPIN} san 33



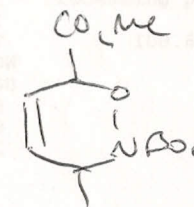
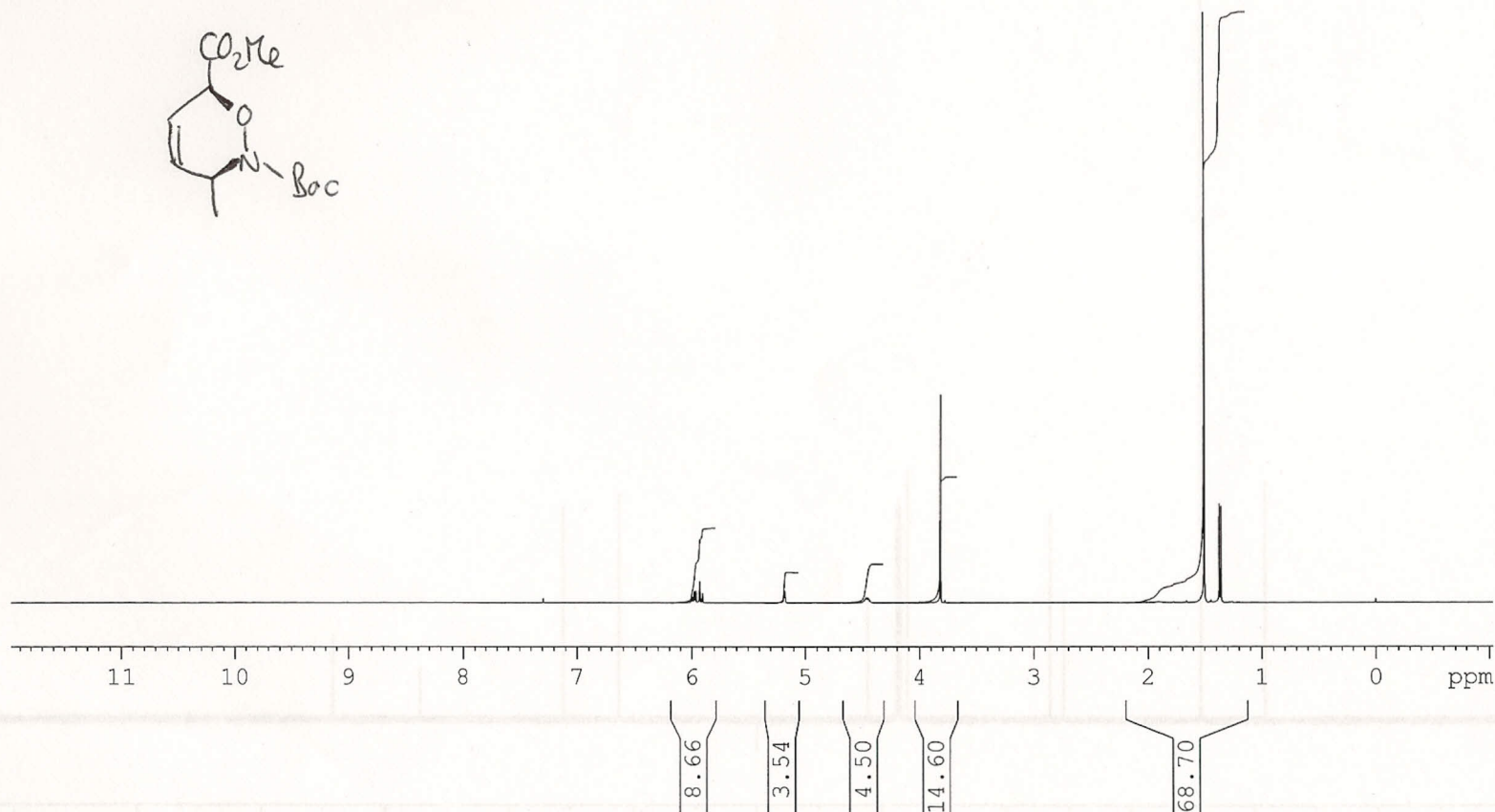
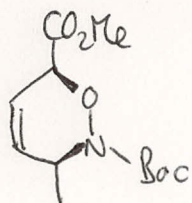
Current Data Parameters
 NAME May09-2008
 EXPNO 330
 PROCNO 1

F2 - Acquisition Parameters
 Date 20080511
 Time 5.13
 INSTRUM spect
 PROBHD 5 mm QNP 1H/13
 PULPROG zg
 TD 32768
 SOLVENT CDCl3
 NS 64
 DS 2
 SWH 6218.905 Hz
 FIDRES 0.189786 Hz
 AQ 2.6345973 sec
 RG 1
 DW 80.400 usec
 DE 6.00 usec
 TE 296.1 K
 D1 2.00000000 sec
 TD0 1

===== CHANNEL f1 =====
 NUC1 1H
 P1 13.25 usec
 PL1 3.00 dB
 SFO1 400.1325018 MHz

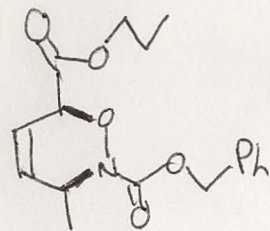
F2 - Processing parameters
 SI 65536
 SF 400.1299965 MHz
 WDW GM
 SSB 0
 LB -0.50 Hz
 GB 0.3
 PC 1.00

2392.28
 2389.70
 2387.81
 2385.31
 2373.42
 2371.97
 2370.44
 2361.75
 2072.62
 2071.07
 1526.37
 600.81
 548.73
 541.99

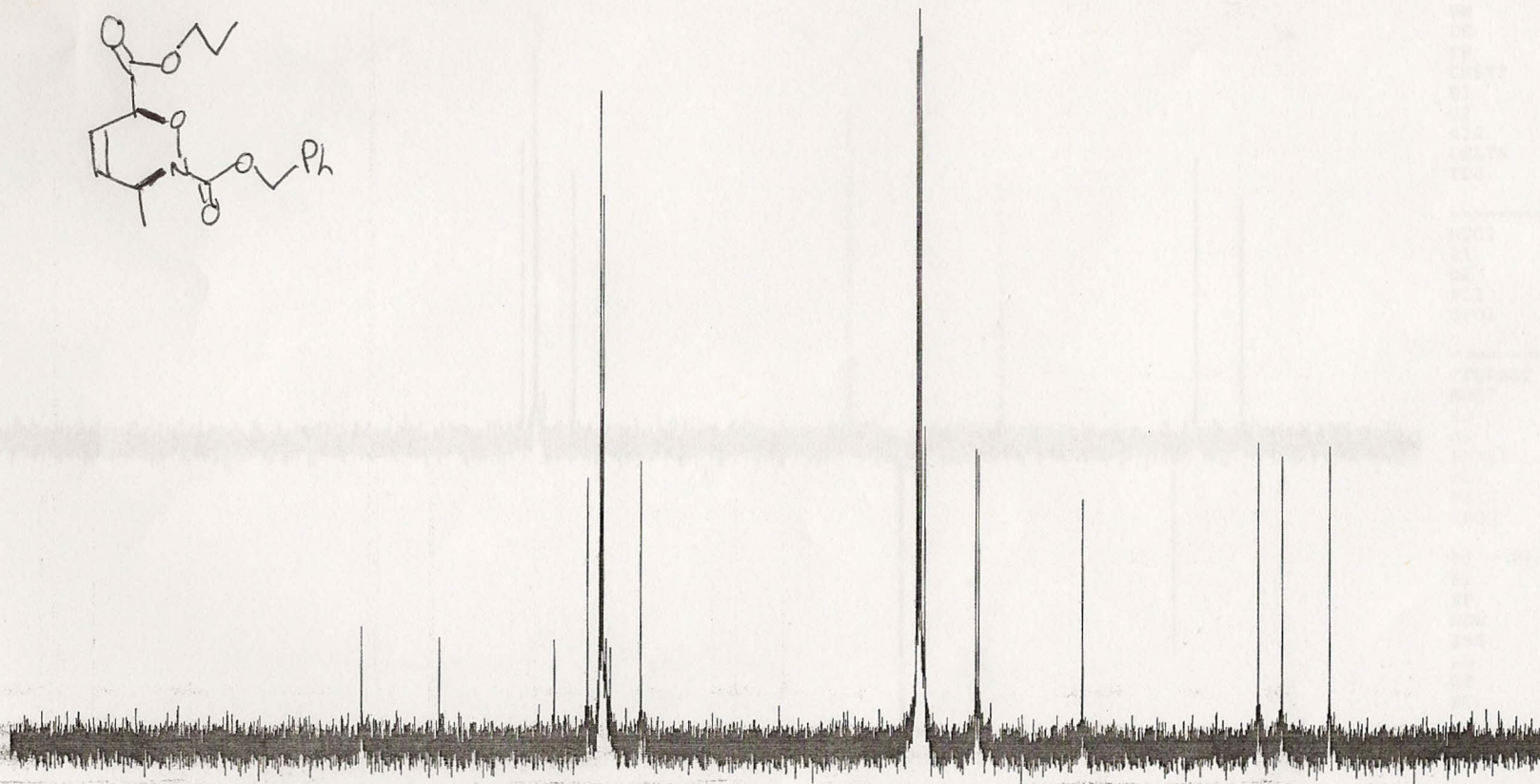


lab number AVS
L.Bollans
PS/ZADD

carbon.liv CDC13 {D:\Bruker\TOPSPIN} san 14



167.657
155.191
136.330
130.952
129.387
128.940
128.659
128.481
128.008
127.370
122.446
77.778
77.460
77.142
76.494
68.114
67.668
50.886
22.241
18.368
10.654



Current Data Parameters
NAME Feb27-2008
EXPNO 142
PROCNO 1

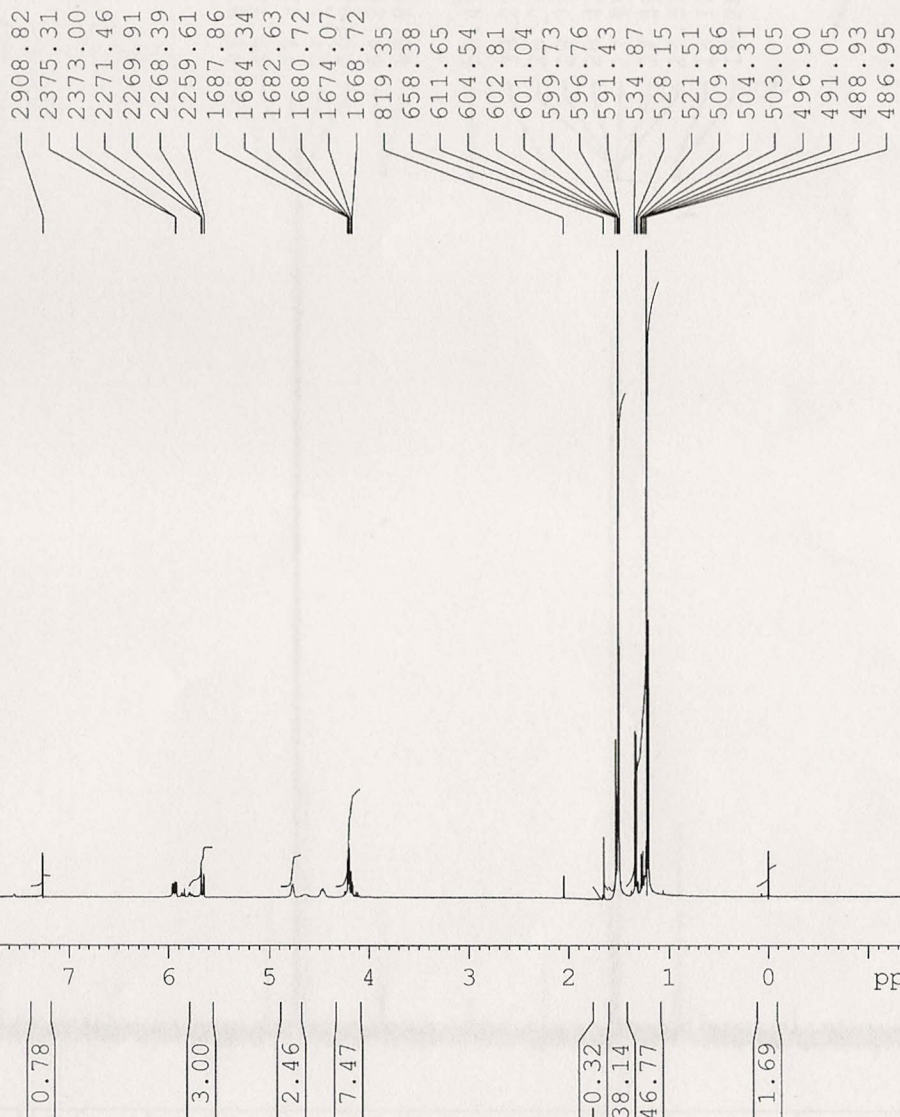
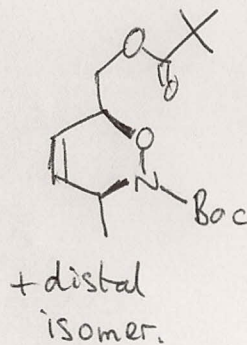
F2 - Acquisition Parameters
Date 20080228
Time 5.56
INSTRUM spect
PROBHD 5 mm QNP 1H/13
PULPROG zgpg30
TD 32768
SOLVENT CDC13
NS 1024
DS 4
SWH 25125.629 Hz
FIDRES 0.766773 Hz
AQ 0.6521332 sec
RG 10321.3
DW 19.900 usec
DE 6.00 usec
TE 297.1 K
D1 1.00000000 sec
d11 0.03000000 sec
DELTA 0.89999998 sec
TDO 1

==== CHANNEL f1 =====
NUC1 13C
P1 11.12 usec
PL1 5.00 dB
SFO1 100.6227898 MHz

==== CHANNEL f2 =====
CPDPRG2 waltz16
NUC2 1H
PCPD2 80.00 usec
PL2 -3.00 dB
PL12 16.37 dB
PL13 18.00 dB
SFO2 400.1316005 MHz

F2 - Processing parameters
SI 65536
SF 100.6127290 MHz
WDW EM
SSB 0
LB 1.00 Hz
GB 0
PC 1.40

lab number AVS
 L Bollans
 BPivBoc
 proton.liv CDC13 {D:\Bruker\TOPSPIN} san 19



Current Data Parameters
 NAME Jan07-2009
 EXPNO 190
 PROCNO 1

F2 - Acquisition Parameters
 Date 20090107
 Time 19.43
 INSTRUM spect
 PROBHD 5 mm QNP 1H/13
 PULPROG zg
 TD 32768
 SOLVENT CDC13
 NS 64
 DS 2
 SWH 6218.905 Hz
 FIDRES 0.189786 Hz
 AQ 2.6345973 sec
 RG 1
 DW 80.400 usec
 DE 6.00 usec
 TE 294.5 K
 D1 2.00000000 sec
 TD0 1

===== CHANNEL f1 =====
 NUC1 1H
 P1 13.25 usec
 PL1 3.00 dB
 SFO1 400.1325018 MHz

F2 - Processing parameters
 SI 65536
 SF 400.1300056 MHz
 WDW GM
 SSB 0
 LB -0.50 Hz
 GB 0.3
 PC 1.00

lab number AVS
 L Bollans
 BSAc/Boc
 proton.liv CDC13 {D:\Bruker\TOPSPIN} san 13



Current Data Parameters
 NAME Aug20-2008
 EXPNO 130
 PROCNO 1

F2 - Acquisition Parameters
 Date 20080820
 Time 18.10
 INSTRUM spect
 PROBHD 5 mm QNP 1H/13
 PULPROG zg
 TD 32768
 SOLVENT CDC13
 NS 64
 DS 2
 SWH 6218.905 Hz
 FIDRES 0.189786 Hz
 AQ 2.6345973 sec
 RG 1
 DW 80.400 usec
 DE 6.00 usec
 TE 292.3 K
 D1 2.00000000 sec
 TD0 1

==== CHANNEL f1 =====
 NUC1 1H
 P1 13.25 usec
 PL1 3.00 dB
 SFO1 400.1325018 MHz

F2 - Processing parameters
 SI 65536
 SF 400.1300035 MHz
 WDW GM
 SSB 0
 LB -0.50 Hz
 GB 0.3
 PC 1.00

2910.70
 2380.08
 2377.73
 2375.49
 2270.03
 2268.43
 2266.87
 2258.17
 1711.60
 1708.53
 1699.42
 1696.40
 1654.28
 1647.06
 1642.10
 1634.86
 844.85
 839.86
 827.06
 820.23
 686.74
 615.03
 611.86
 601.81
 599.79
 534.19
 527.46
 510.21
 504.94
 503.41
 0.00

