

## Supporting Information for

### Novel Dialkoxytriazine-type Glycosyl Donors for Cellulase-catalysed Lactosylation

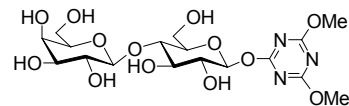
Tomonari Tanaka, Masato Noguchi, Kazuhito Watanabe, Takuya Misawa, Masaki Ishihara, Atsushi Kobayashi, and Shin-ichiro Shoda\*

Department of Biomolecular Engineering, Graduate School of Engineering, Tohoku University, 6-6-11-514, Aoba, Sendai, Miyagi 980-8579, Japan

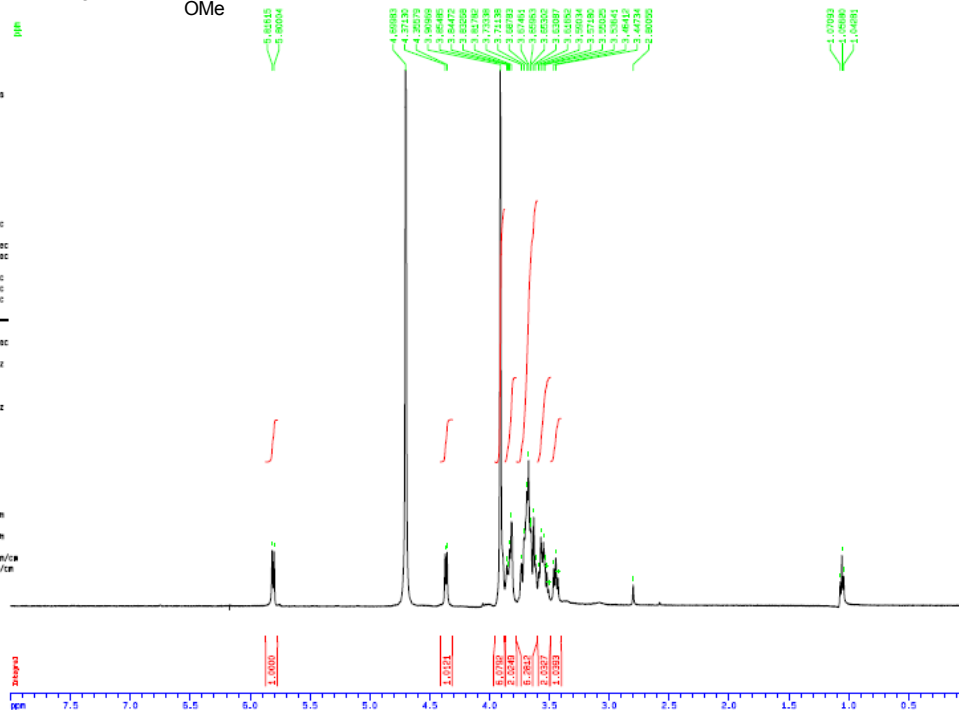
#### List of Contents for Experimental Section

<sup>1</sup>H and <sup>13</sup>C NMR spectra of sugar triazine derivatives: S2-S6

<sup>1</sup>H and <sup>13</sup>C NMR spectra of enzymatic transglycosylation products: S7-S9



Different Data Parameters  
 NAME t1  
 EXPNO 1  
 PROCNO 1  
 F2 - Acquisition Parameters  
 Date\_ 20070608  
 Time 17.38  
 INSTRUM dr-500  
 PROBRD 5 mm Multirect1  
 PULPROG zgpg30  
 TD 65536  
 SOLVENT D2O  
 NS 8  
 DS 2  
 SWH 10330.578 Hz  
 FIDRES 0.107630 Hz  
 AQ 3.1729623 sec  
 RG 143.7  
 DN 48.400 usec  
 DE 6.00 usec  
 TE 294.6 K  
 D1 2.0000000 sec  
 DELTA 0.0000000 sec  
 INCR 0.0150000 sec  
 --- CHANNEL f1 ---  
 NUC1 1H  
 P1 9.00 usec  
 PL1 -6.00 dB  
 SFO1 500.1330685 MHz  
 F2 - Processing parameters  
 SI 32768  
 SF 500.1330002 MHz  
 KW EM  
 SSB 0  
 LB 0.00 Hz  
 GB 0  
 PC 1.00  
 ID NMR plot parameters  
 CX 33.00 cm  
 CY 0.00 cm  
 FXP 8.000 ppm  
 F1 4001.04 Hz  
 F2P 5.000 ppm  
 F3 0.00 Hz  
 FWHM 0.24842 ppm/cm  
 NZCM 121.24364 Hz/cm



Current Data Parameters  
 NAME t2  
 EXPNO 2  
 PROCNO 1  
 F2 - Acquisition Parameters  
 Date\_ 20070608  
 Time 17.40  
 INSTRUM dr-500  
 PROBRD 5 mm Multirect1  
 PULPROG zgpg30  
 TD 65536  
 SOLVENT D2O  
 NS 8  
 DS 2  
 SWH 32679.738 Hz  
 FIDRES 0.488653 Hz  
 AQ 1.0027900 sec  
 RG 83.00  
 DN 15.300 usec  
 DE 6.00 usec  
 TE 294.6 K  
 D1 1.0000000 sec  
 DELTA 0.0000000 sec  
 INCR 0.0000000 sec  
 INCR2 0.0000000 sec  
 INCR3 0.0000000 sec  
 INCR4 0.0000000 sec  
 INCR5 0.0000000 sec  
 INCR6 0.0000000 sec  
 INCR7 0.0000000 sec  
 INCR8 0.0000000 sec  
 --- CHANNEL f1 ---  
 NUC1 13C  
 P1 7.00 usec  
 PL1 0.00 dB  
 SFO1 125.7728208 MHz  
 --- CHANNEL f2 ---  
 CPDPRG2 waltz16  
 NUC2 1H  
 P2 100.00 usec  
 PL2 -6.00 dB  
 PL3 18.00 dB  
 PL4 18.00 dB  
 SFO2 500.1325006 MHz  
 F2 - Processing parameters  
 SI 32768  
 SF 125.7577846 MHz  
 KW EM  
 SSB 0  
 LB 1.00 Hz  
 GB 0  
 PC 1.40  
 ID NMR plot parameters  
 CX 33.00 cm  
 CY 0.00 cm  
 FXP 200.000 ppm  
 F1 25151.85 Hz  
 F2 -0.000 Hz  
 F3 -0.00 Hz  
 FWHM 5.00000 ppm/cm  
 NZCM 762.18832 Hz/cm

