

Strategies for improving the water solubility of new antitumour

nitronaphthylbutadiene derivatives

Antonella Fontana,^{*a} Maurizio Viale,^b Susanna Guernelli,^c Carla Gasbarri,^a Egon Rizzato,^c
Massimo Maccagno,^d Giovanni Petrillo,^d Cinzia Aiello,^b Silvano Ferrini,^b Domenico Spinelli^{*e}

^a *Dipartimento di Scienze del Farmaco, Università 'G. d'Annunzio', Via dei Vestini 31, Chieti 66013, Italia.* ^b *Istituto Nazionale per la Ricerca sul Cancro, S. C. Terapia Immunologica, L.go R. Benzi 10, 16132 Genova, Italia* ^c *Dipartimento di Chimica Organica 'A. Mangini', Università di Bologna, Via San Giacomo 11, Bologna 40126, Italia.* ^d *Dipartimento di Chimica e Chimica Industriale, Università di Genova, Via Dodecaneso 31, Genova 16146, Italia.* ^e *Dipartimento di Chimica 'G. Ciamician', Università di Bologna, Via Selmi 2, Bologna 40126, Italia*

Supplementary Material

Content:

Figure S1. Positive ion ESI-MS mass spectra of the complexes of **1-Naph-DNB** with β -CD and of **1-Naph-DNB** with DM β CD at t_0 (i.e. just after mixing).

Figure S2. Positive ion ESI-MS mass spectra (2000-3000 m/z interval) of the complexes of **1-Naph-DNB** with β -CD or with DM β CD at t_{20} (i.e. after 20 minutes of mixing).

Figure S3: Titration of **1-Naph-DNB** 35 μ M with β -CD at λ_{\max} 223 nm according to a 1:2 complexation model.

Figure S4: Titration of **1-Naph-DNB** 35 μ M with DM β CD at λ_{\max} 223 nm according to a 1:2 complexation model.

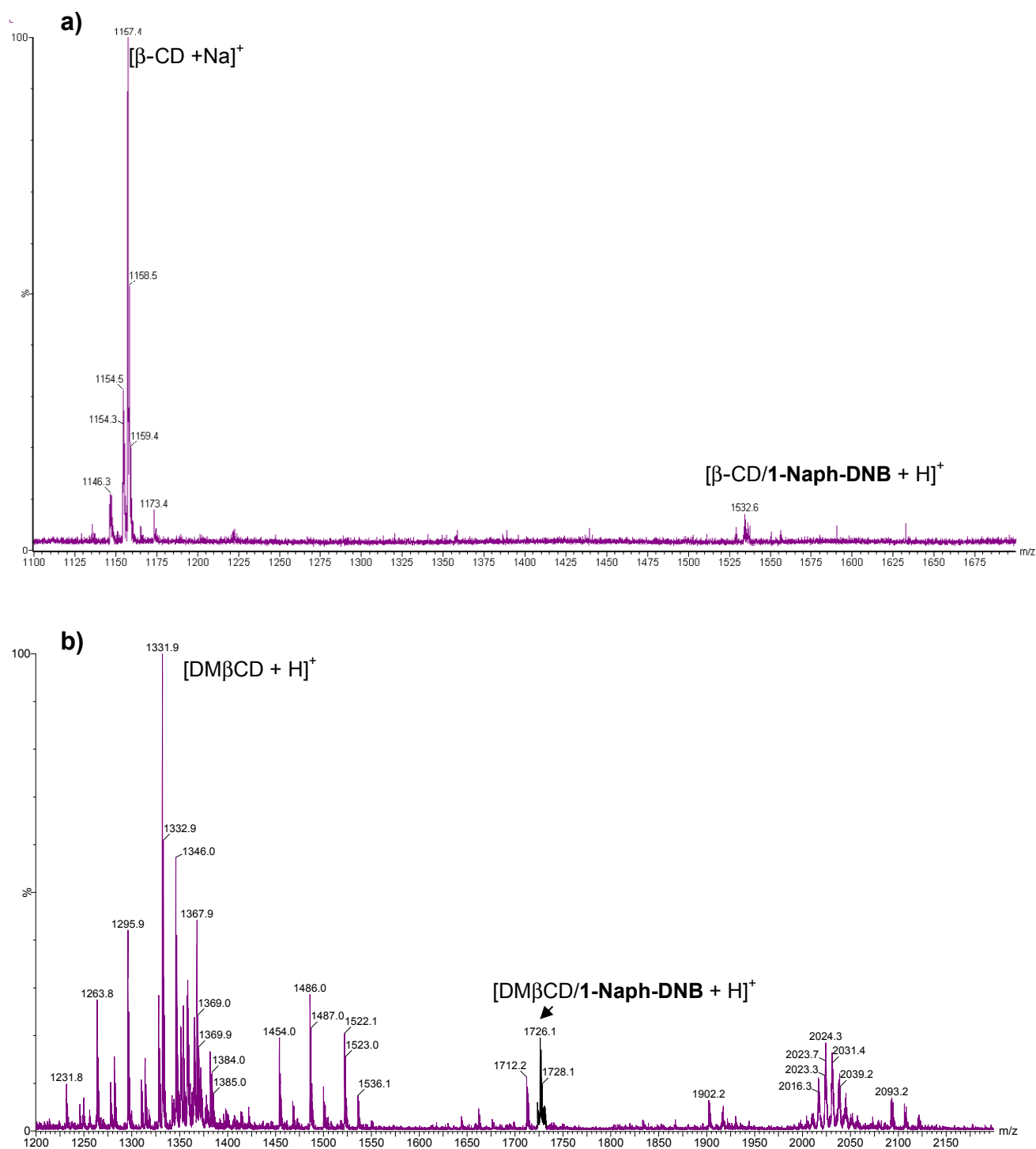


Figure S1. Positive ion ESI-MS mass spectra of the complexes of 1-Naph-DNB with β -CD and of 1-Naph-DNB with DM β CD at t_0 (i.e. just after mixing).

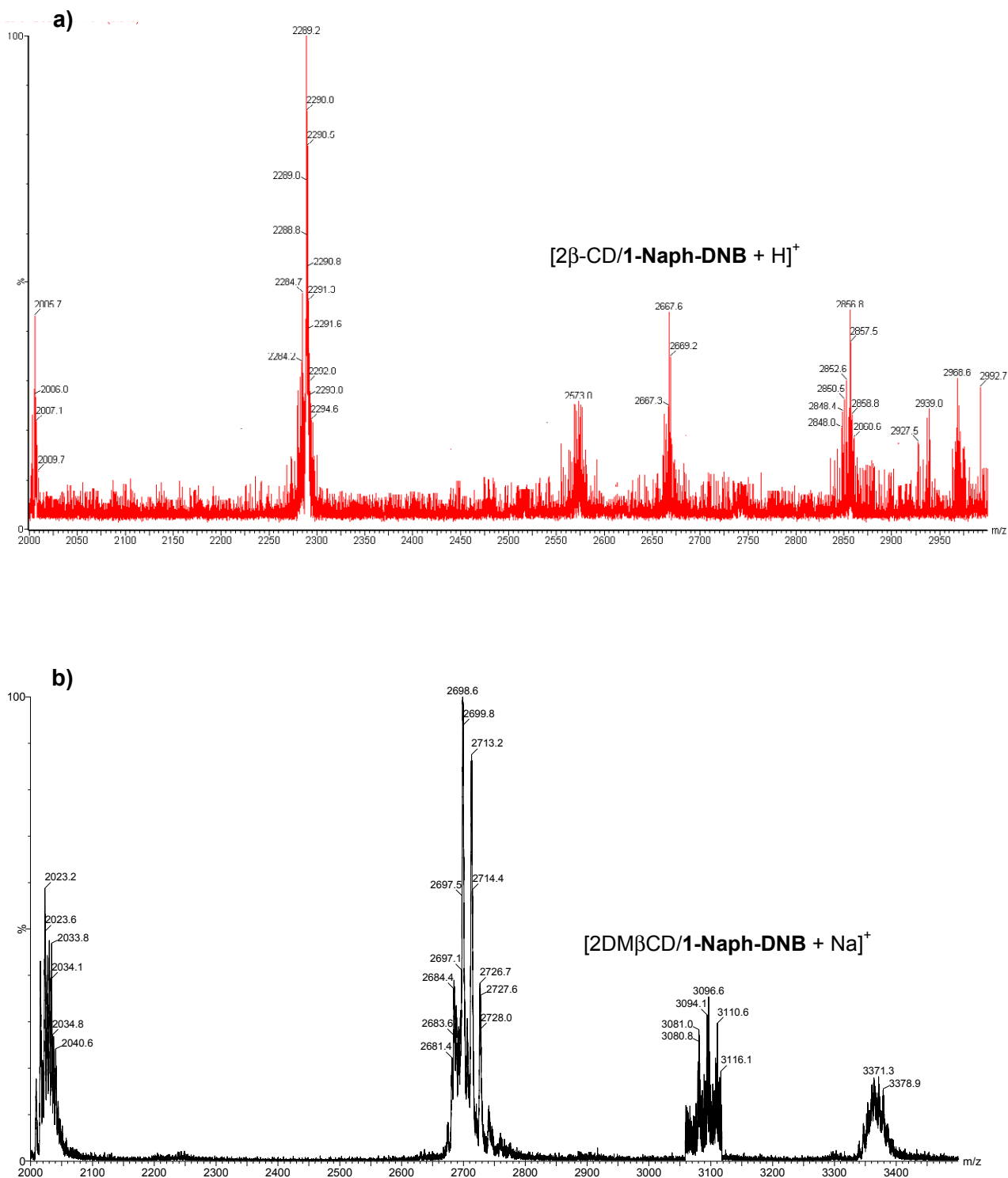


Figure S2. Positive ion ESI-MS mass spectra (2000-3000 m/z interval) of the complexes of 1-Naph-DNB with β -CD or with DM β CD at t_{20} (i.e. after 20 minutes of mixing).

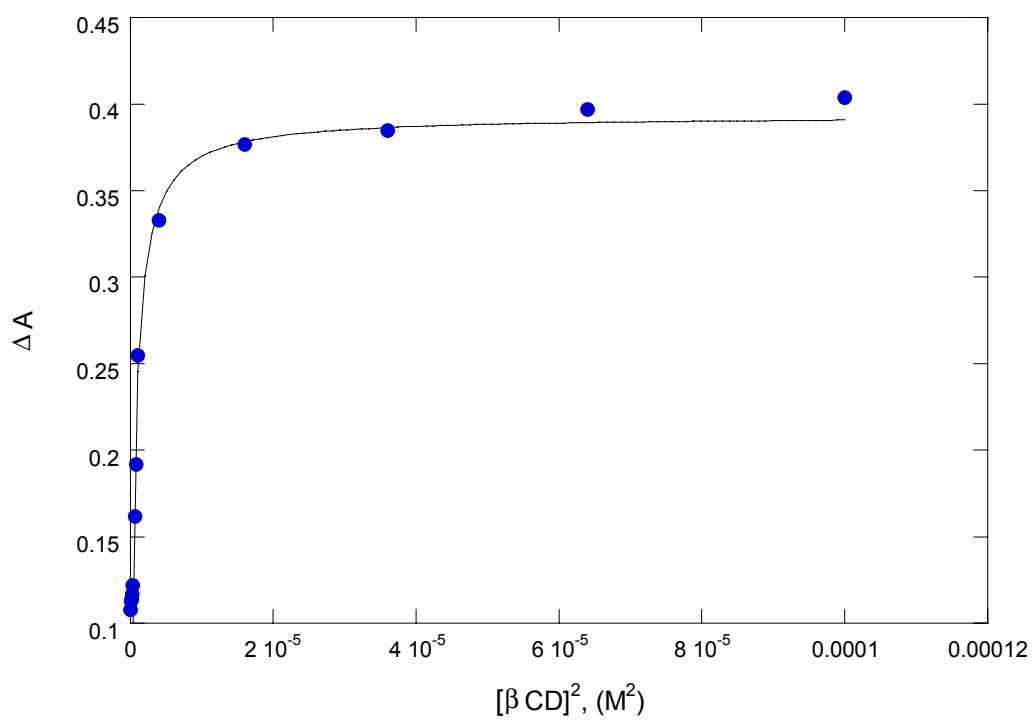


Figure S3: Titration of **1-Naph-DNB** 35 μM with $\beta\text{-CD}$ at λ_{max} 223 nm according to a 1:2 complexation model.

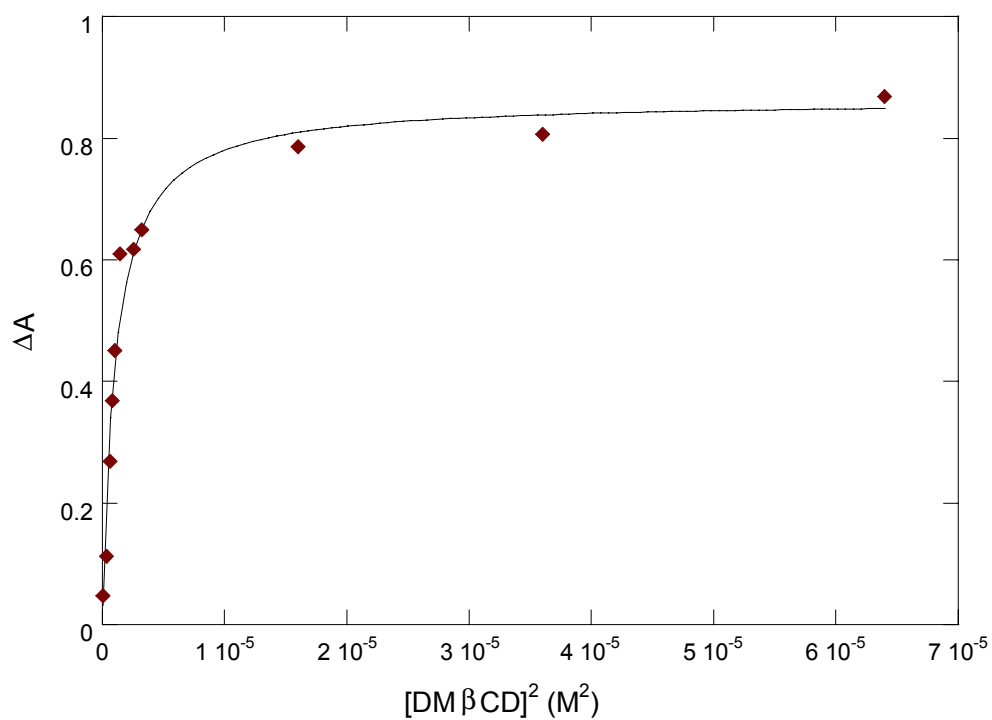


Figure S4: Titration of **1-Naph-DNB** 35 μM with $\text{DM}\beta\text{CD}$ at λ_{max} 223 nm according to a 1:2 complexation model.