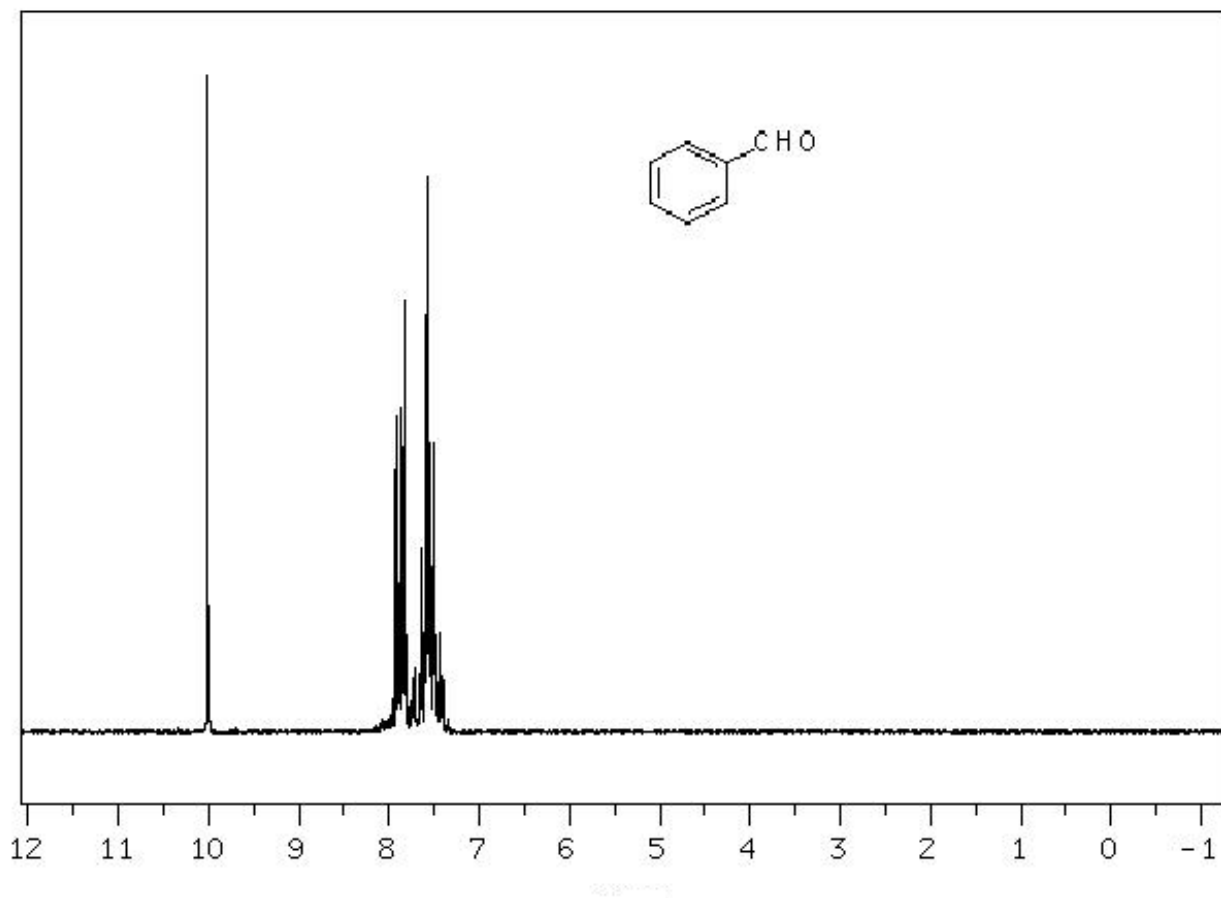


## Supporting Information

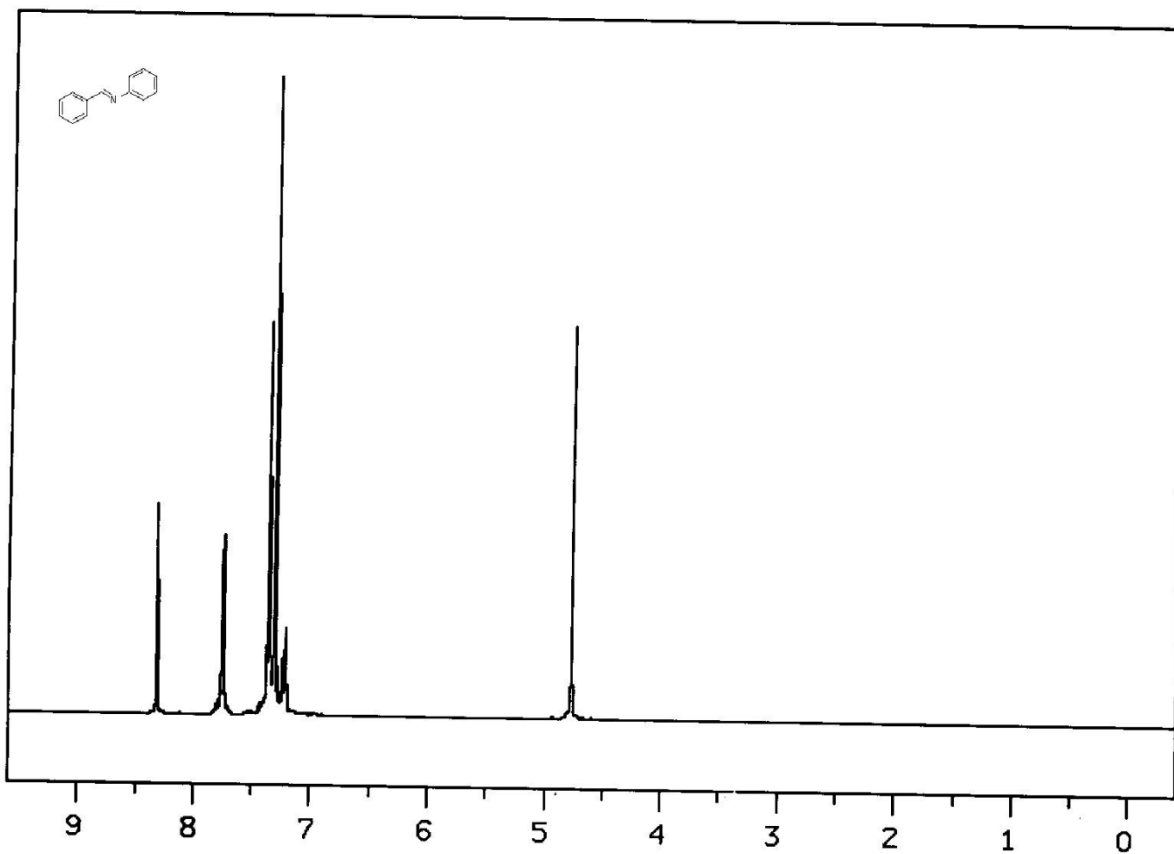
### Polyethylene glycol clicked Co(II) Schiff base and its catalytic activity for the oxidative dehydrogenation of secondary amines

Praveen K. Khatri, Suman L. Jain,\* L. N. Sivakumar K. and Bir Sain

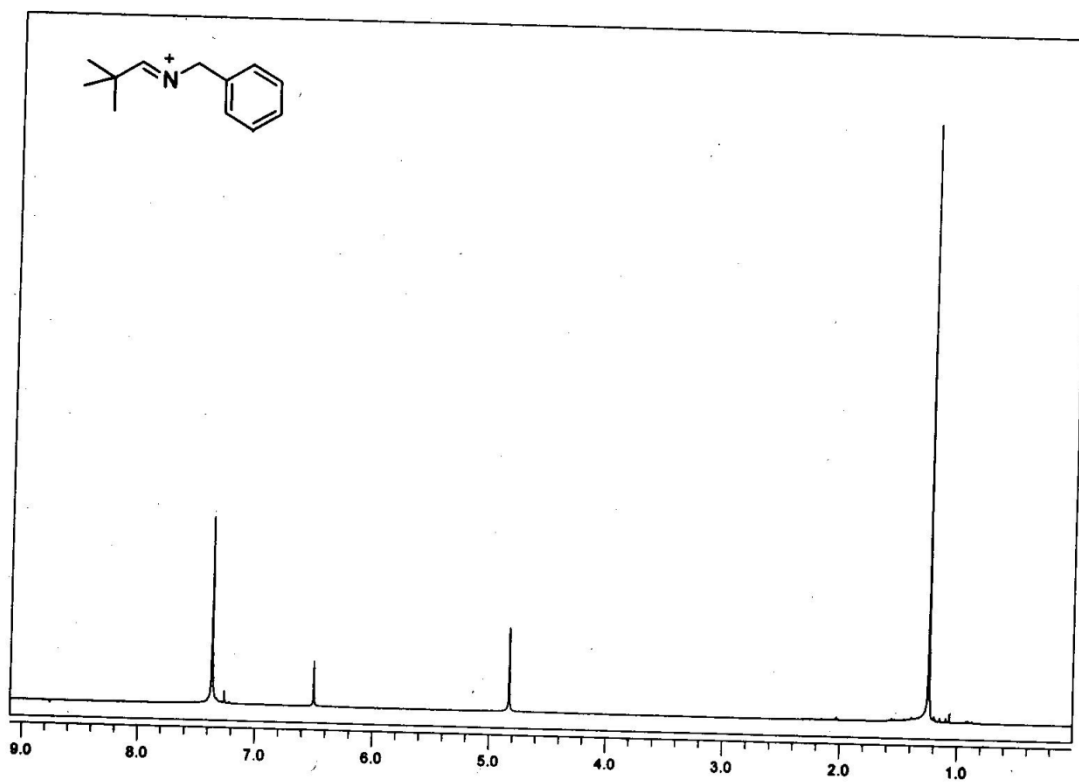
**Benzaldehyde (Table 1: entry 1):**



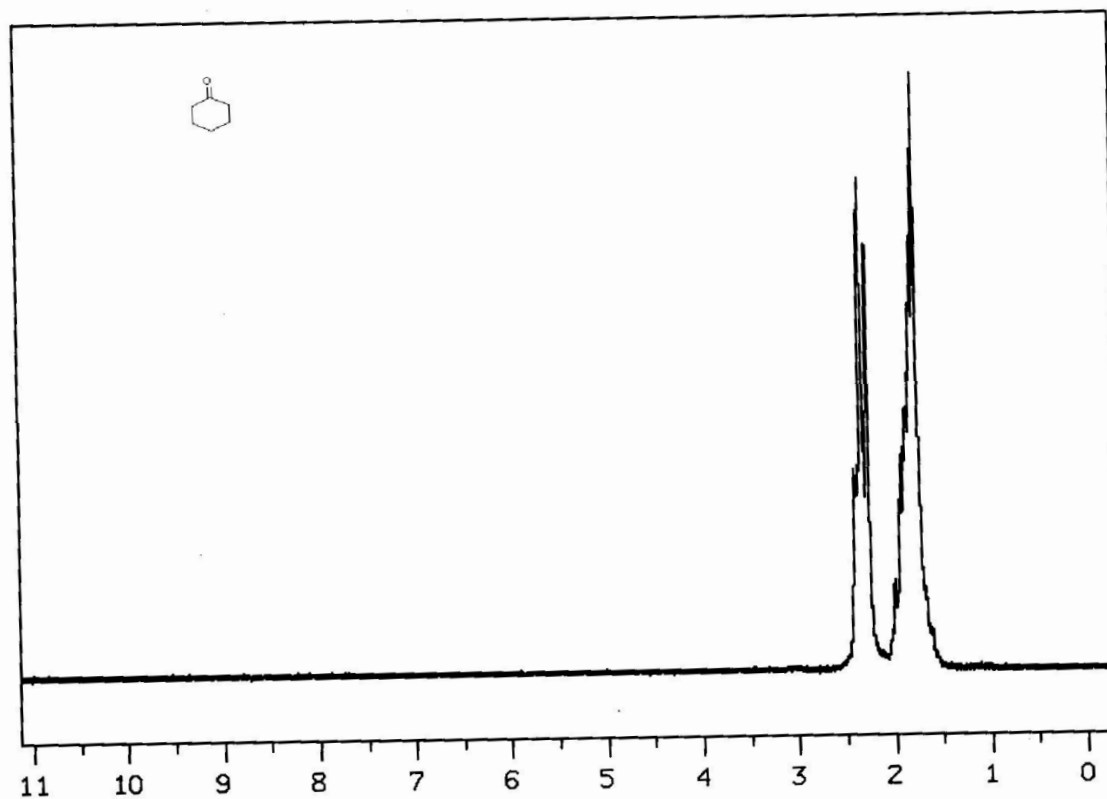
**Benzylidene benzylamine (Table 1, entry 2):**



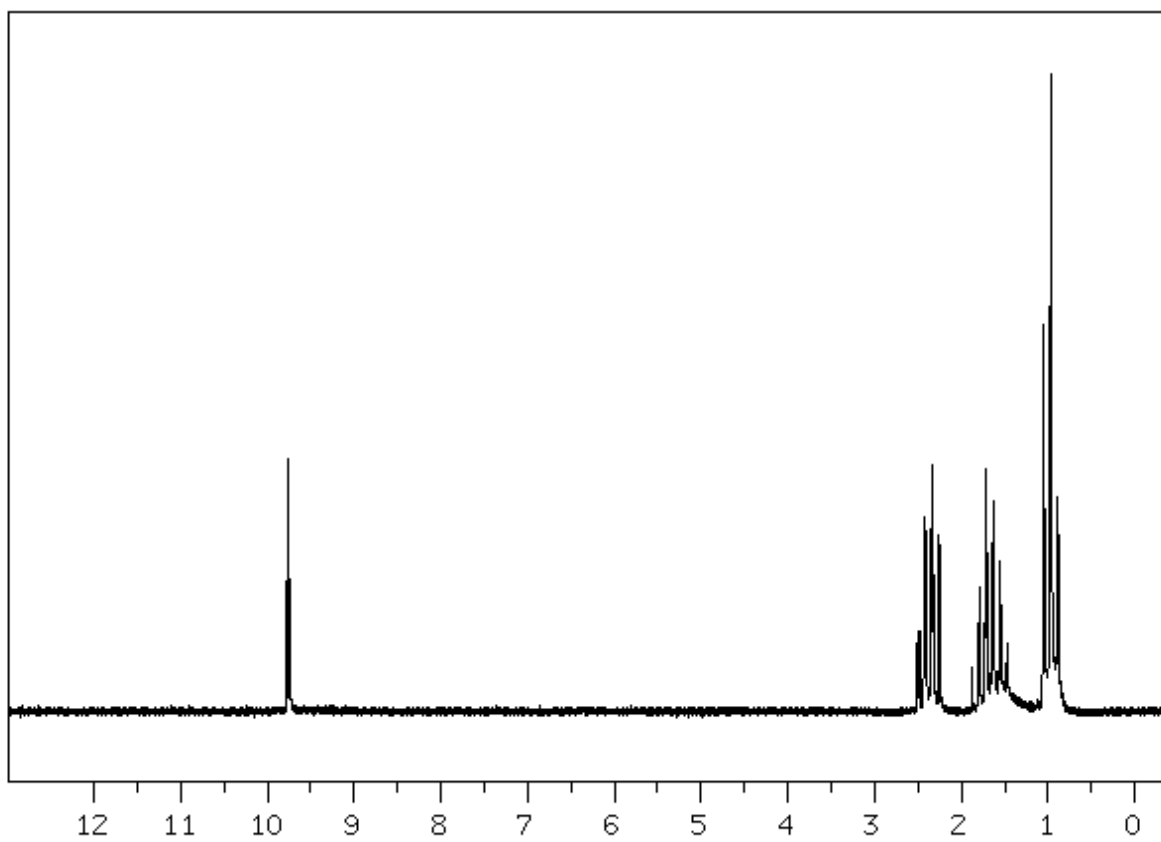
**Benzylidene-*tert*-butylamine (Table 1, entry 3)**



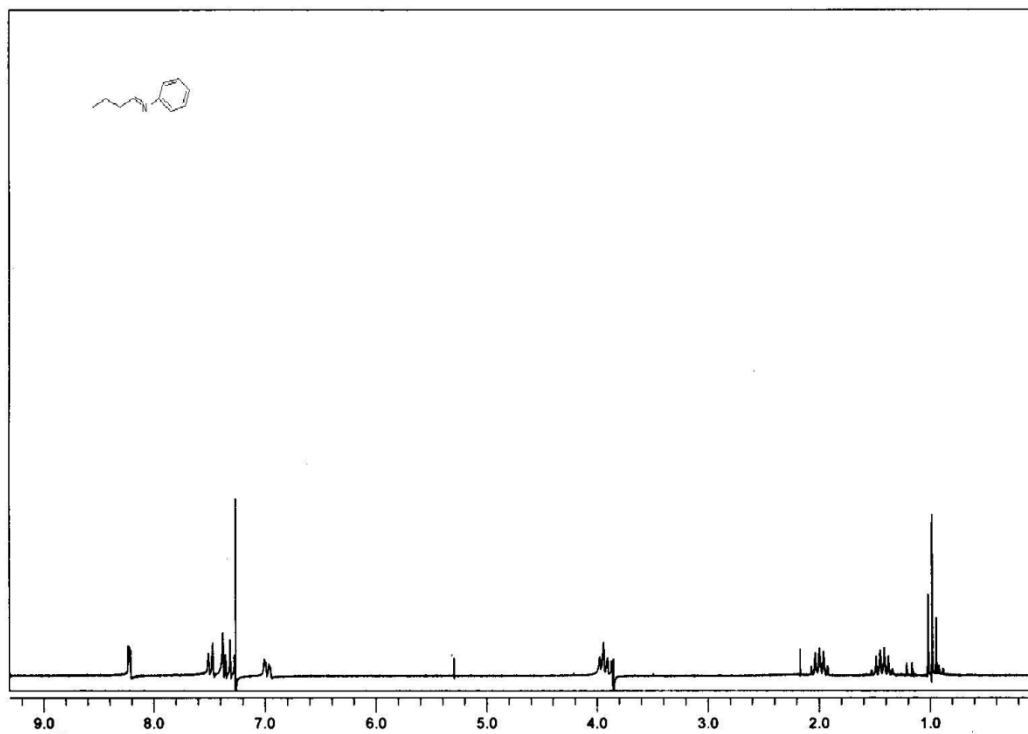
**Cyclohexanone (Table 1, entry  
4)**



**Butyraldehyde (Table 1, entry 5):**



***n*-Butylidene benzylamine (Table 1, entry 6):**





**3,4-Dihydroisoquinoline (Table 1, entry 7):**

