

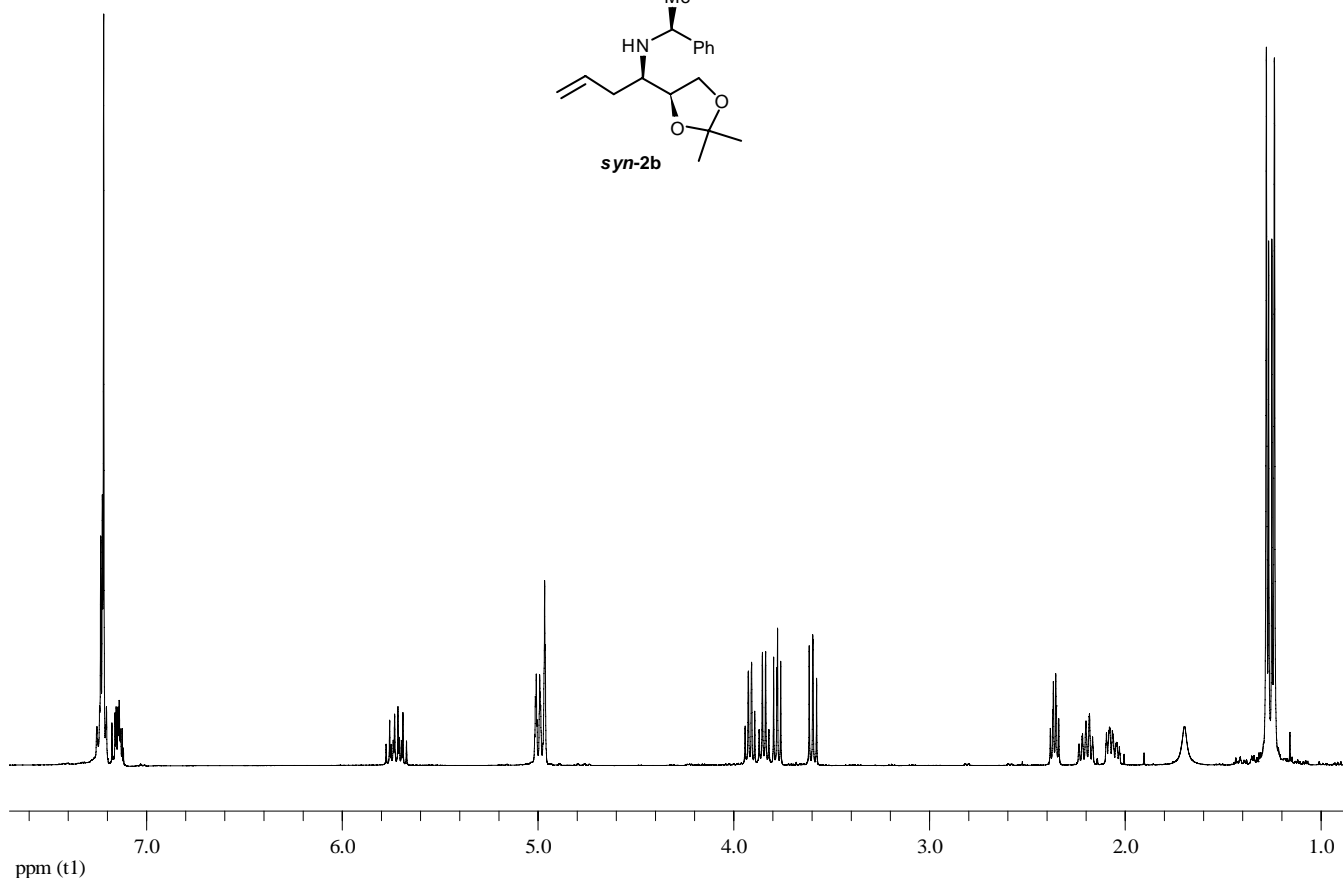
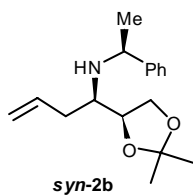
Switch in regioselectivity of epoxide ring-opening by changing the organometallic reagent

José A. Gálvez,^{a*} María D. Díaz de Villegas,^{a*} Ramón Badorrey,^a and Pilar López-Ram-de-Víu^a

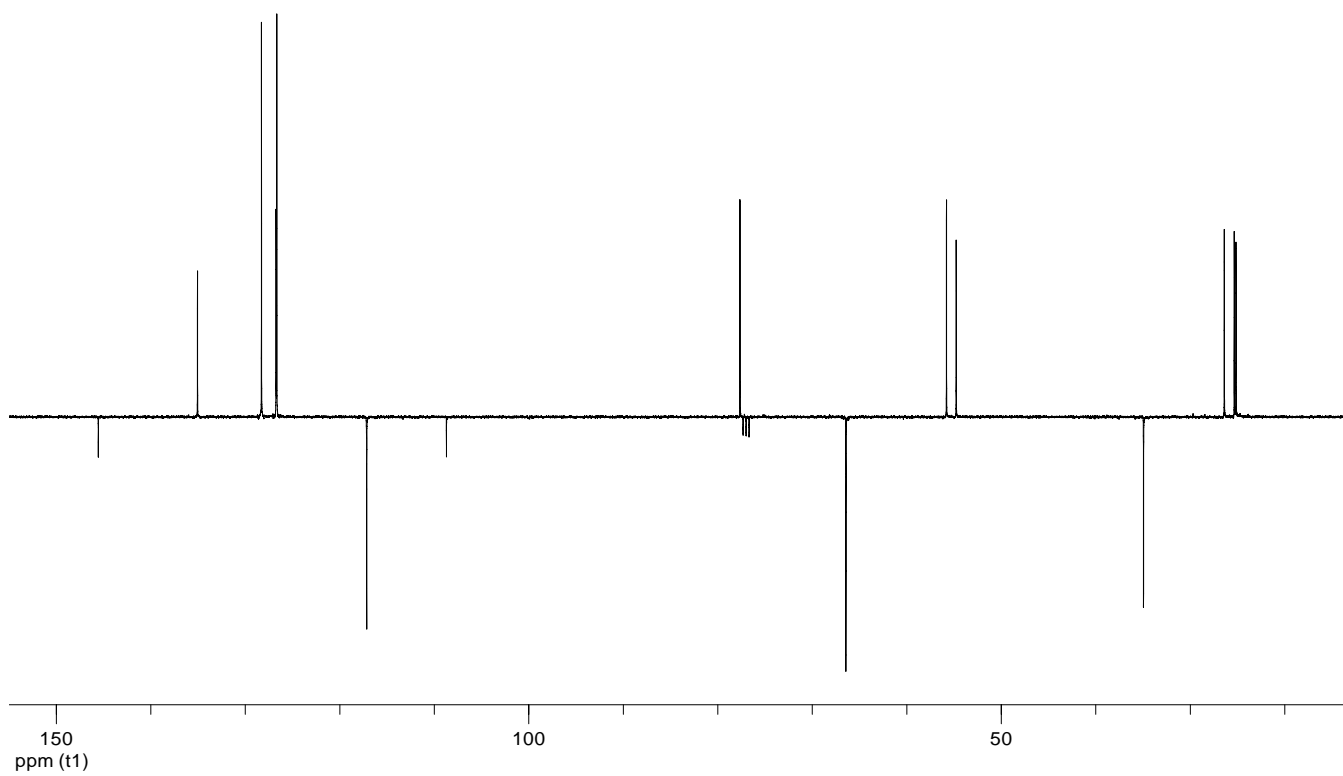
^a Departamento de Química Orgánica, Instituto de Ciencia de Materiales de Aragón, Instituto Universitario de Catálisis Homogénea, Universidad de Zaragoza-CSIC, E-50009 Zaragoza, Spain. Fax: +34976761202; Tel: +34976762274; E-mail: loladiaz@unizar.es.

Table of contents

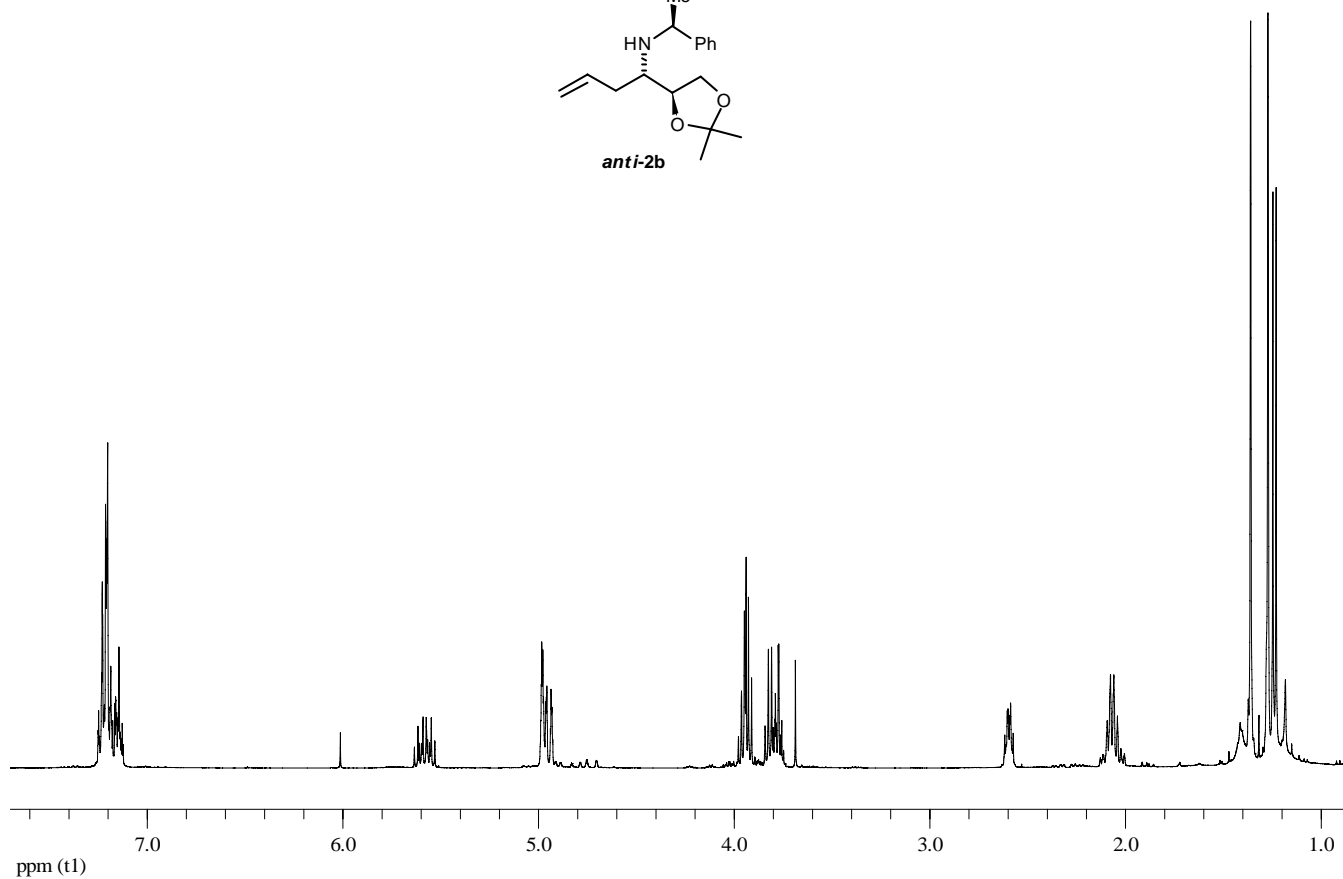
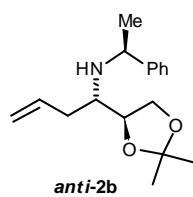
¹ H NMR and ¹³ C NMR spectra for compound <i>syn-2b</i>	2
¹ H NMR and ¹³ C NMR spectra for compound <i>anti-2b</i>	3
¹ H NMR and ¹³ C NMR spectra for compound 3	4
¹ H NMR and ¹³ C NMR spectra for compound 4	5
¹ H NMR and ¹³ C NMR spectra for compound 5	6
¹ H NMR and ¹³ C NMR spectra for compound 6	7
¹ H NMR and ¹³ C NMR spectra for compound 7a	8
¹ H NMR and ¹³ C NMR spectra for compound 7b	9
¹ H NMR and ¹³ C NMR spectra for compound 7b	10
¹ H NMR and ¹³ C NMR spectra for compound 8a	11
¹ H NMR and ¹³ C NMR spectra for compound 8b	12
¹ H NMR and ¹³ C NMR spectra for compound 8d	13
¹ H NMR and ¹³ C NMR spectra for compound 8e	14
¹ H NMR and ¹³ C NMR spectra for compound 9a	15
¹ H NMR and ¹³ C NMR spectra for compound 9b	16
¹ H NMR and ¹³ C NMR spectra for compound 9d	17
¹ H NMR and ¹³ C NMR spectra for compound 9e	18
¹ H NMR and ¹³ C NMR spectra for compound 10	19
ORTEP drawing of compound 9e	20



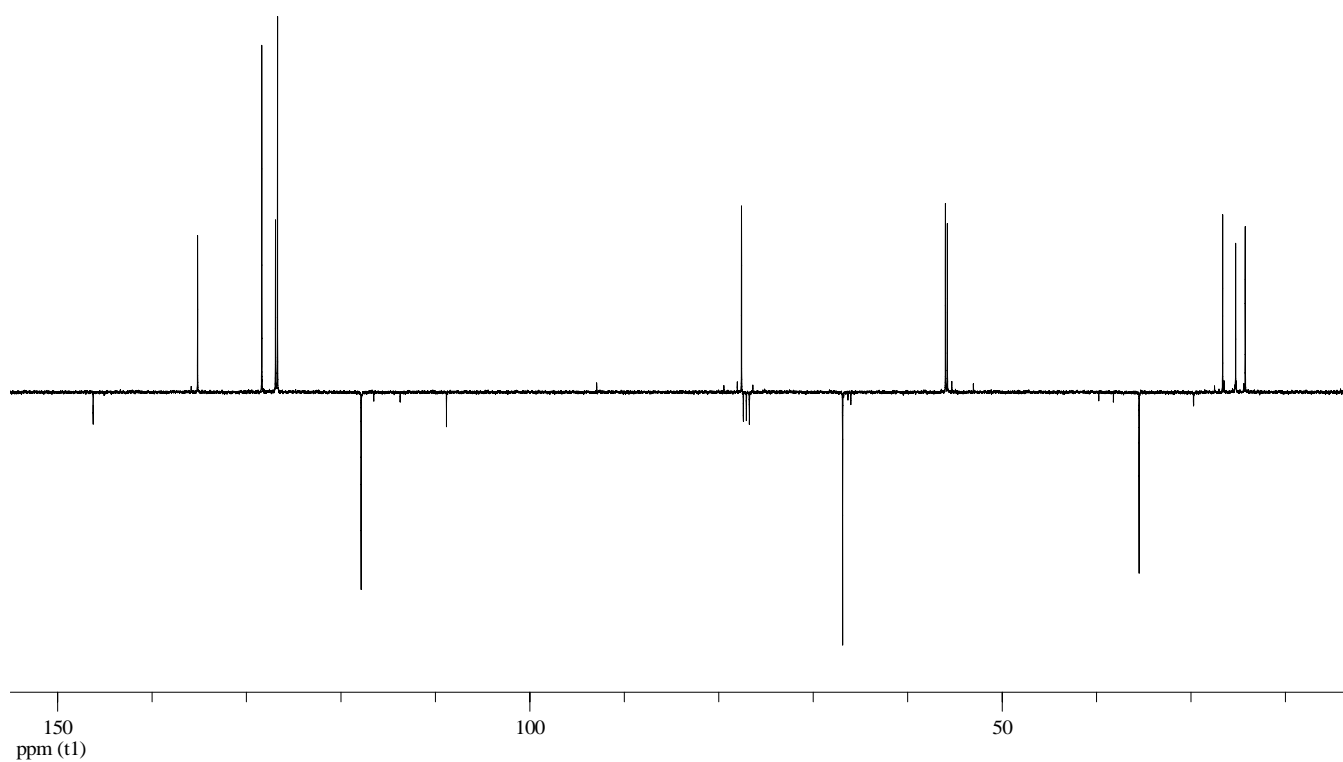
¹H NMR 400 MHz, rt, CDCl₃



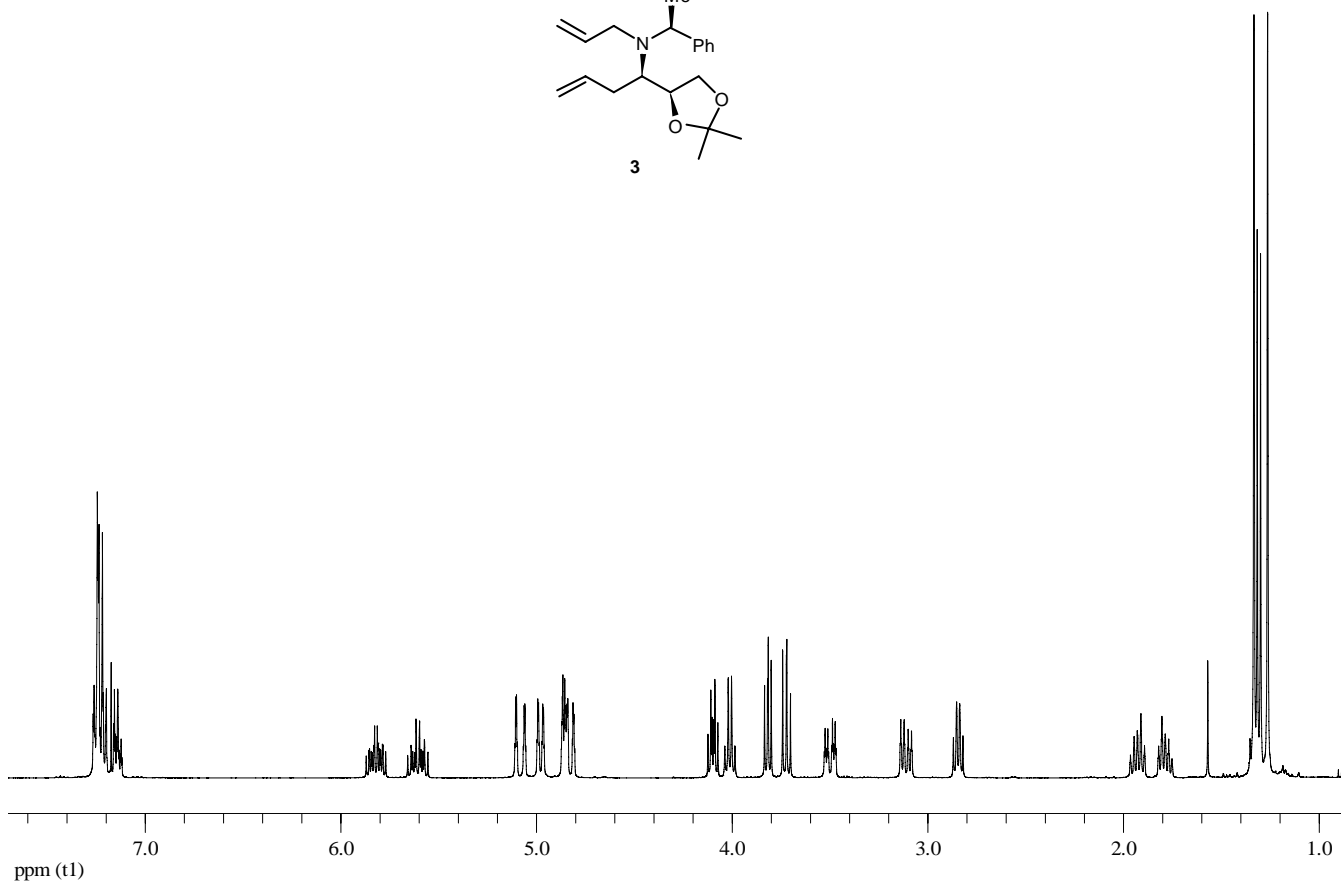
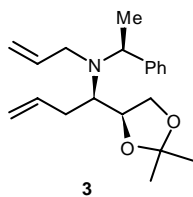
¹³C NMR 100 MHz, rt, CDCl₃



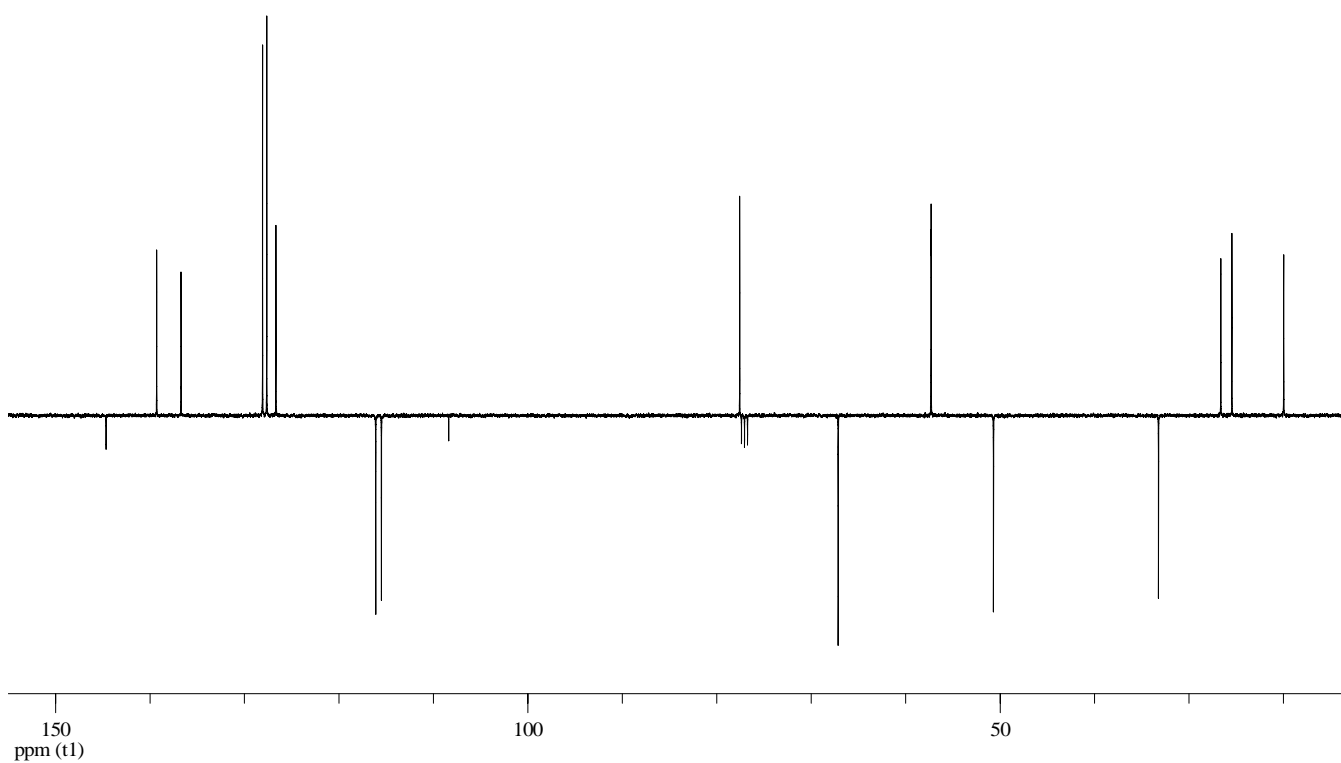
¹H NMR 400 MHz, rt, CDCl₃



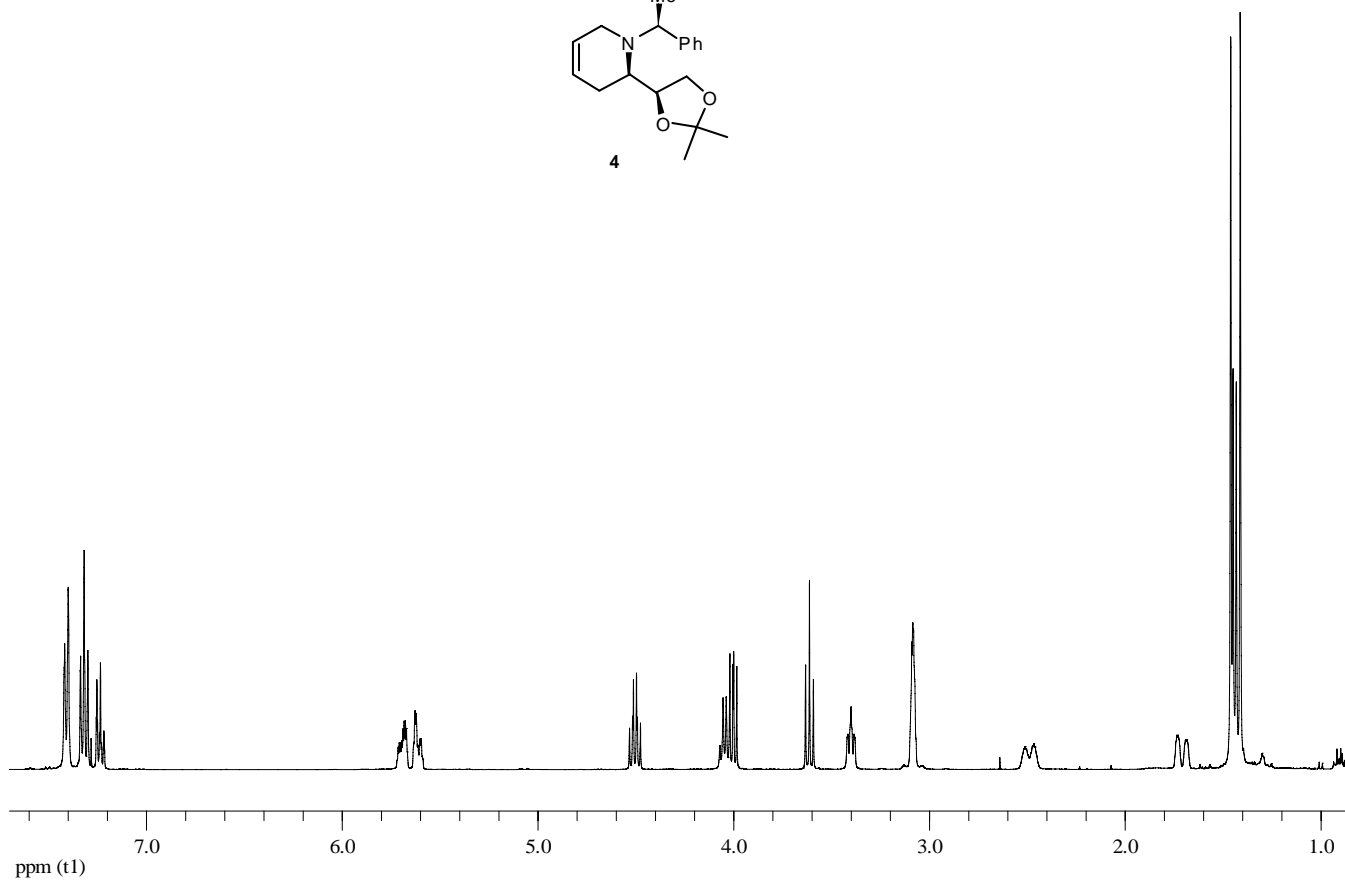
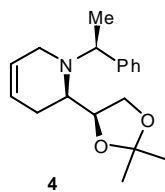
¹³C NMR 100 MHz, rt, CDCl₃



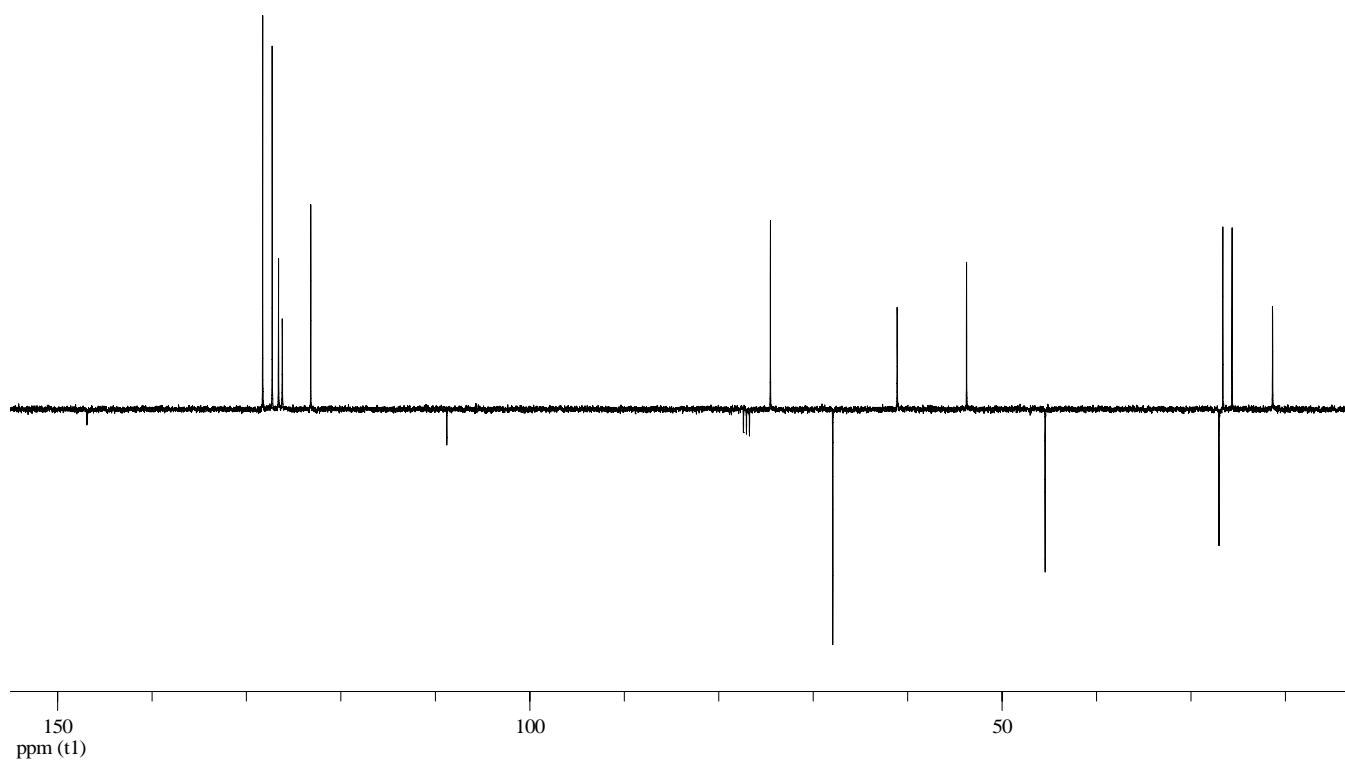
^1H NMR 400 MHz, rt, CDCl_3



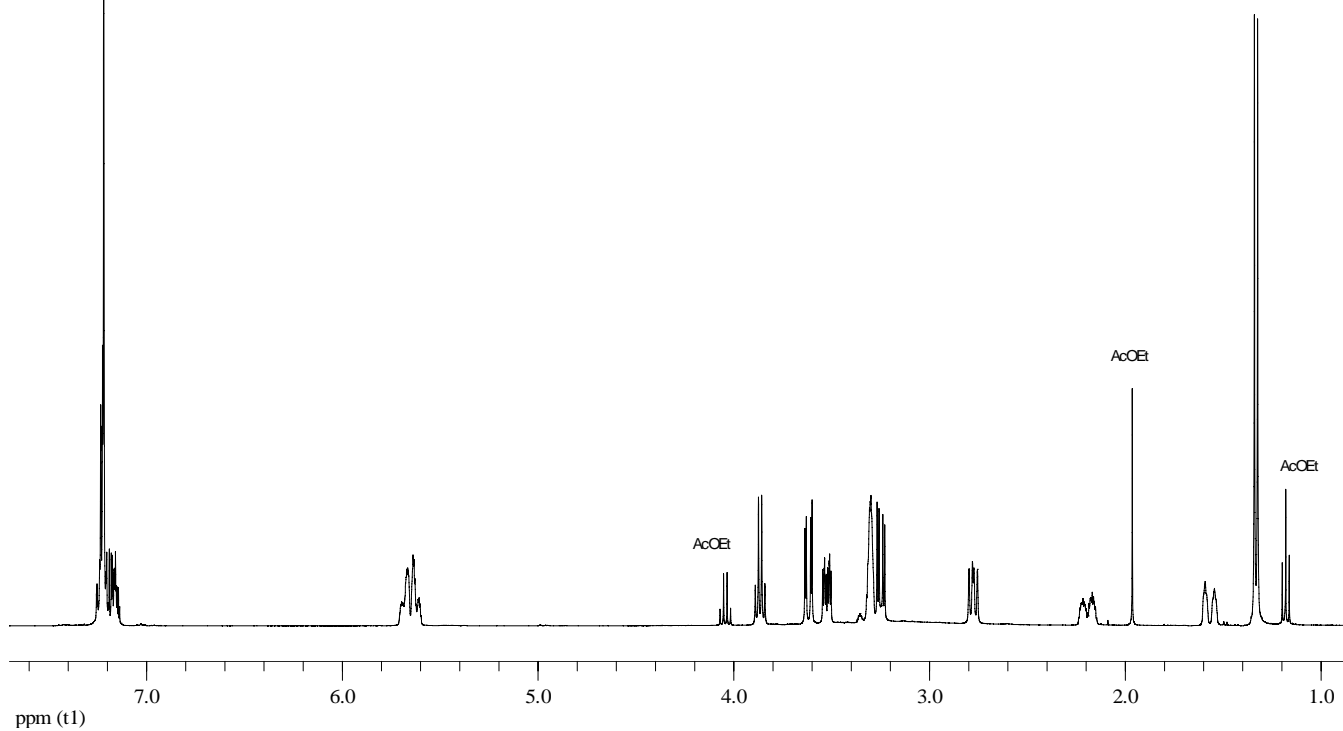
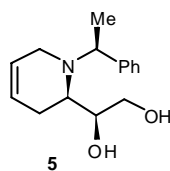
^{13}C NMR 100 MHz, rt, CDCl_3



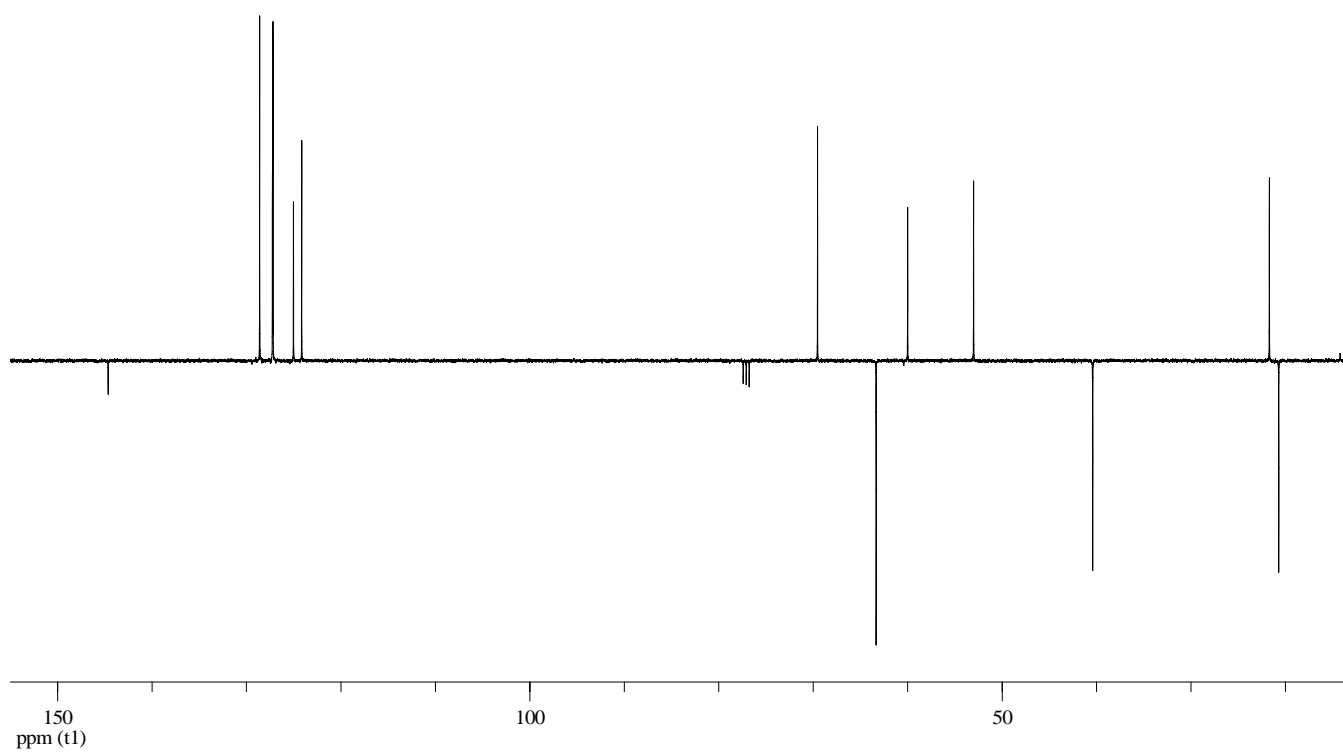
¹H NMR 400 MHz, rt, CDCl₃



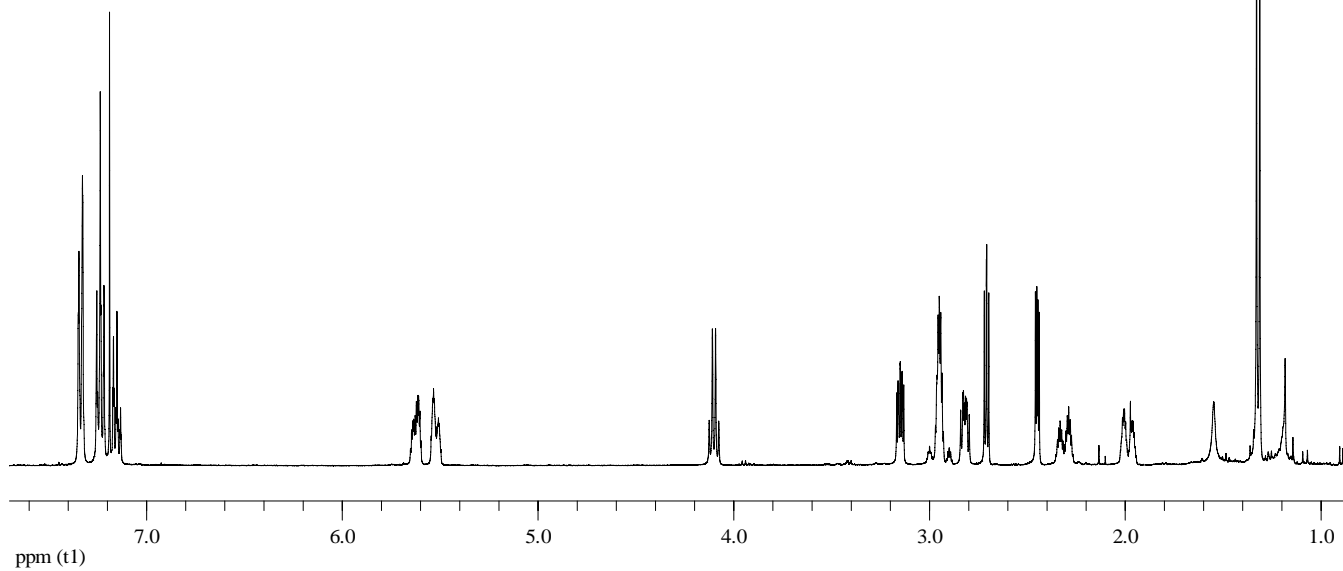
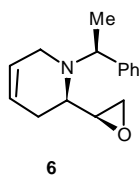
¹³C NMR 100 MHz, rt, CDCl₃



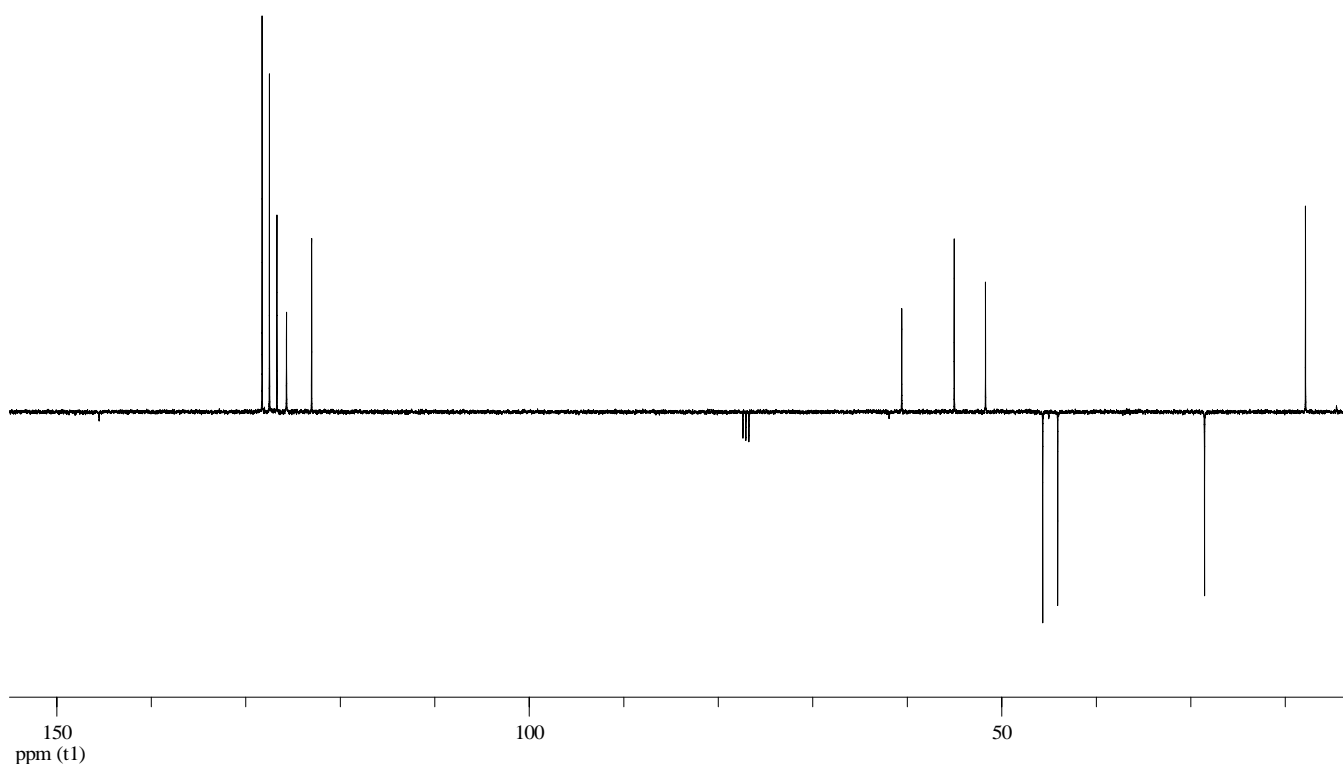
^1H NMR 400 MHz, rt, CDCl_3



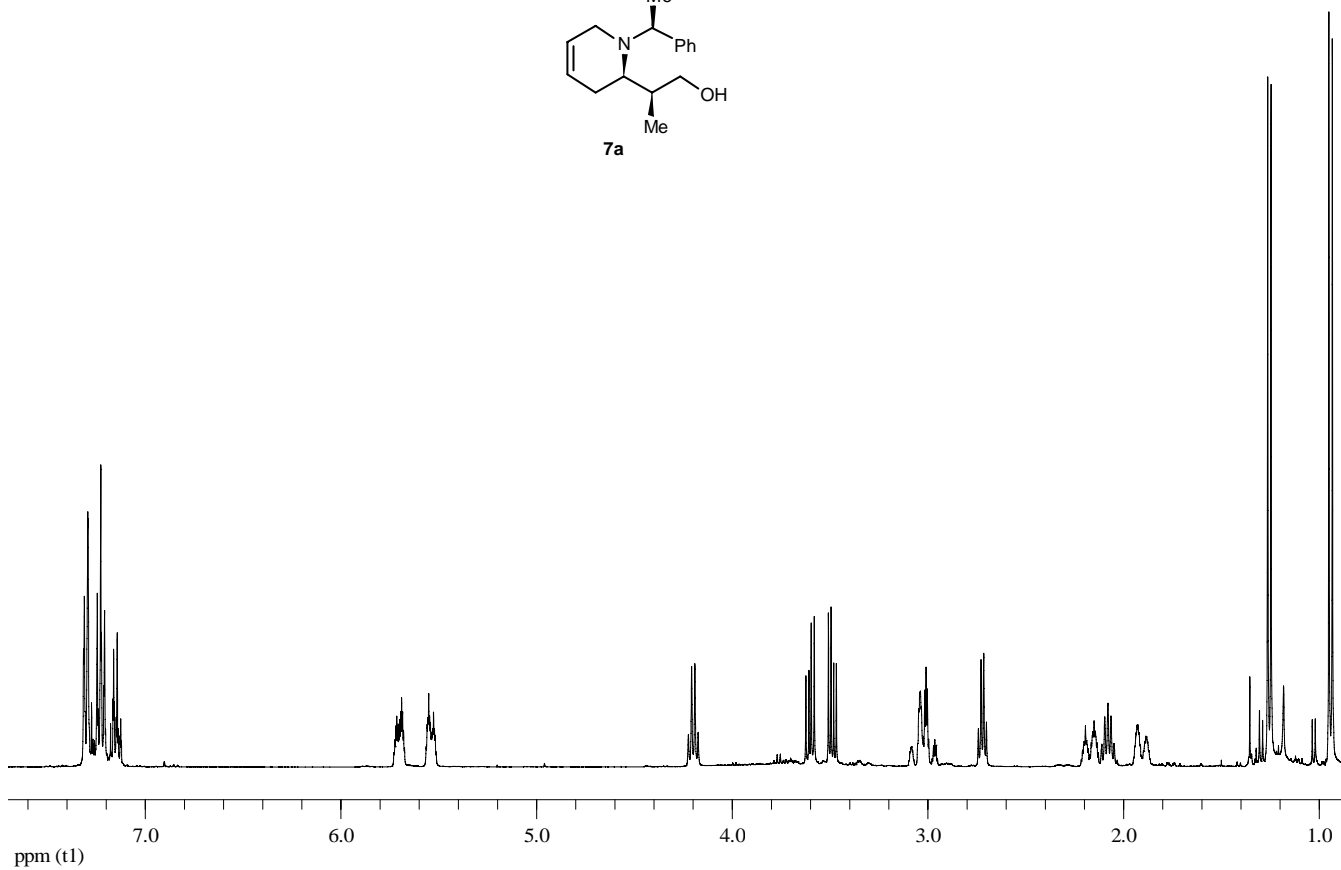
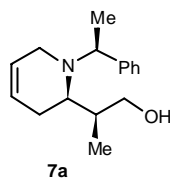
^{13}C NMR 100 MHz, rt, CDCl_3



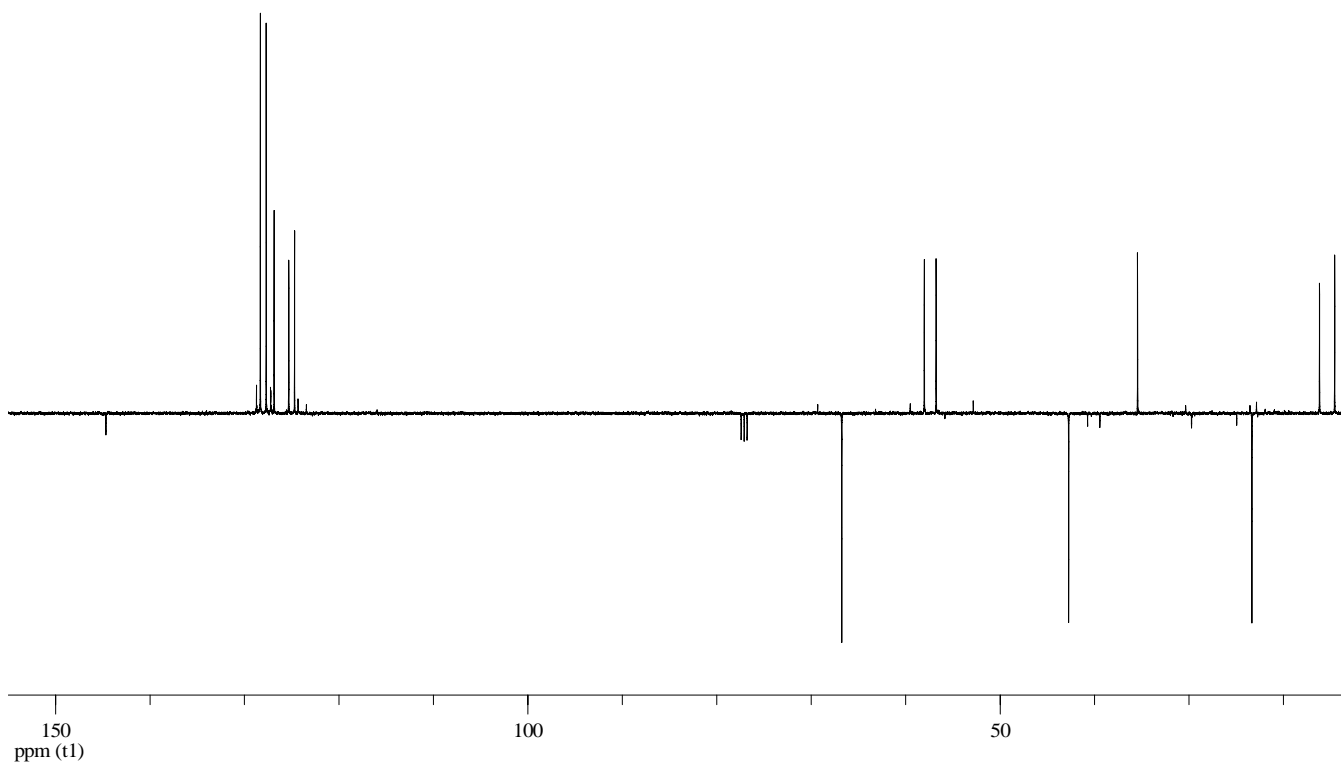
^1H NMR 400 MHz, rt, CDCl_3



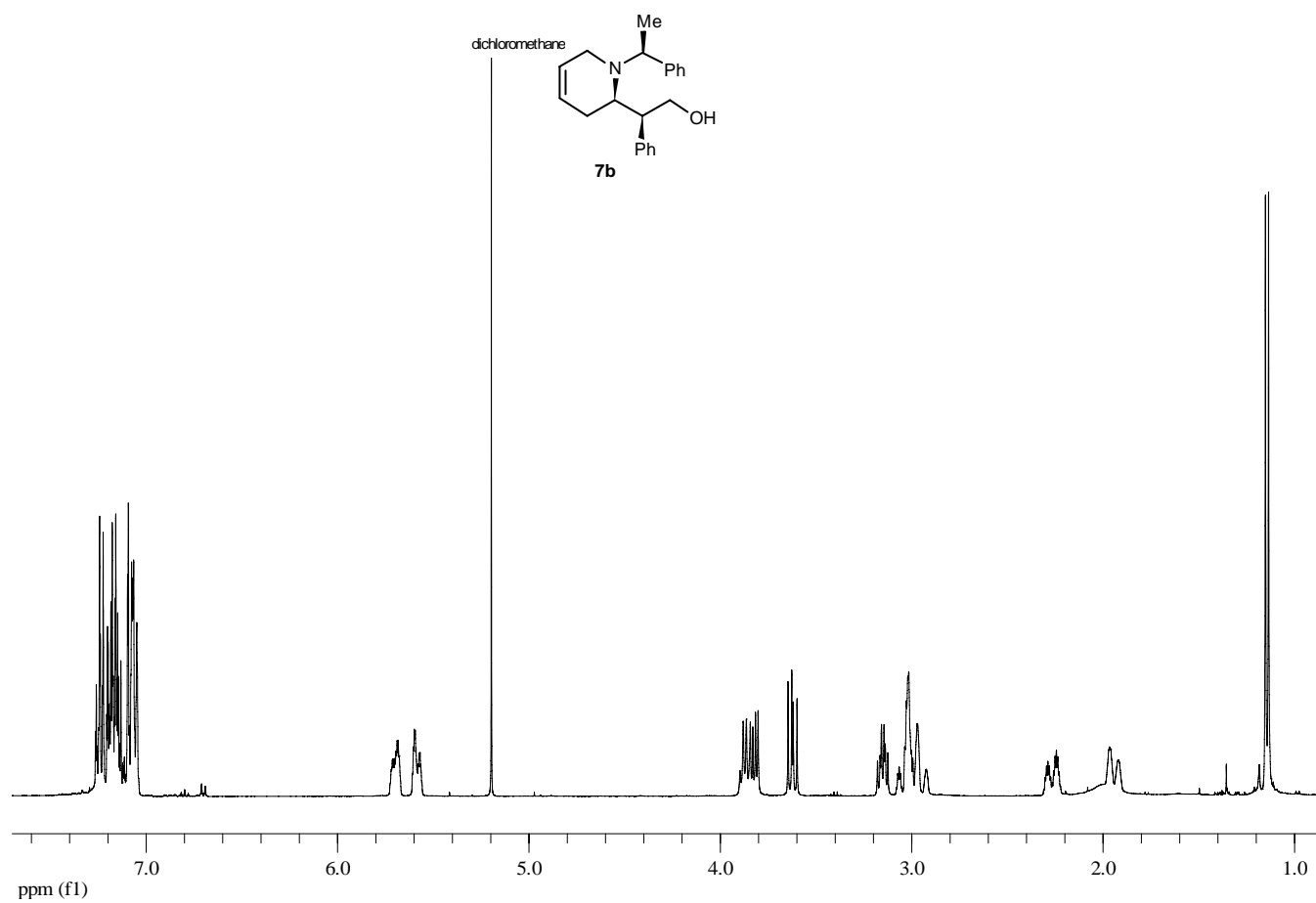
^{13}C NMR 100 MHz, rt, CDCl_3



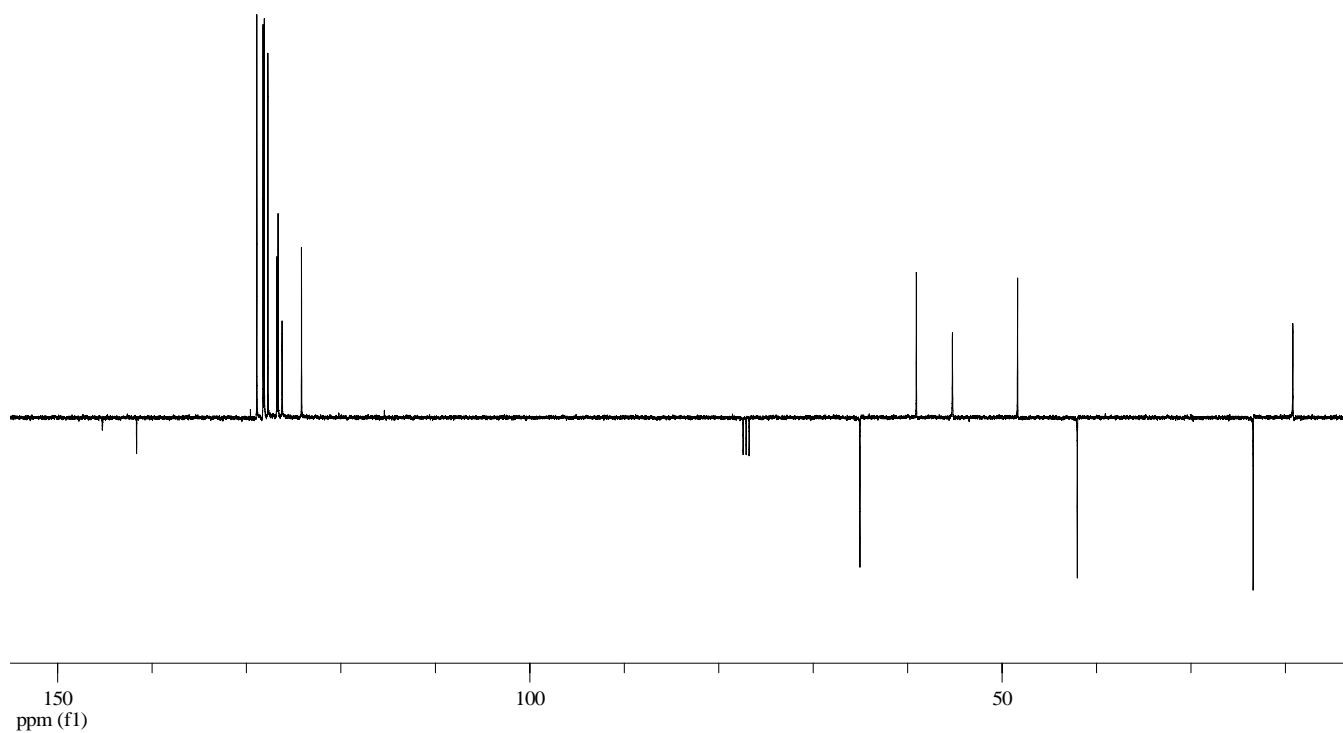
¹H NMR 400 MHz, rt, CDCl₃



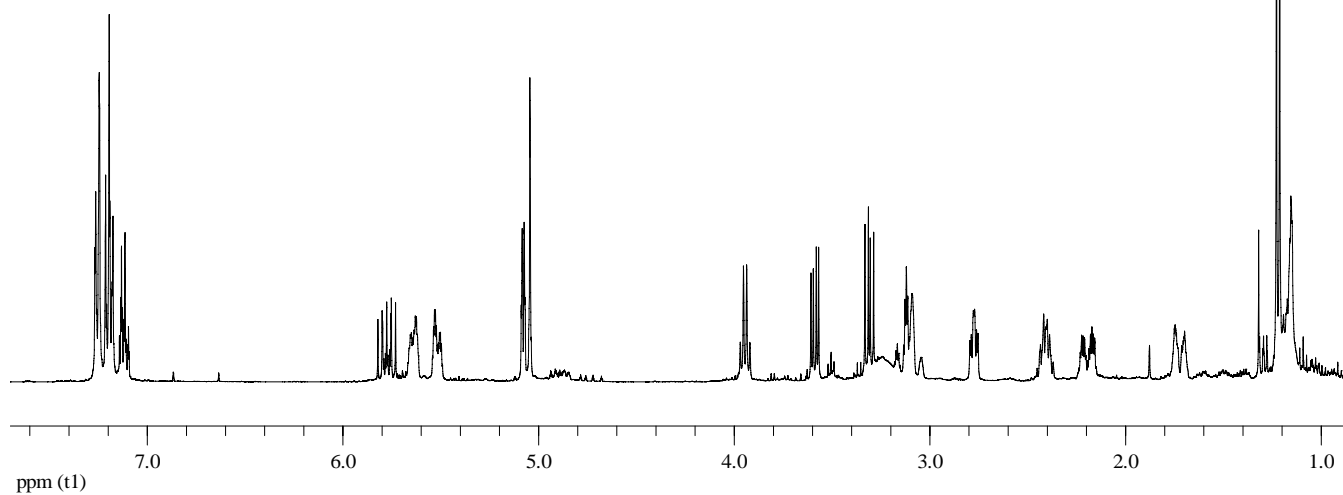
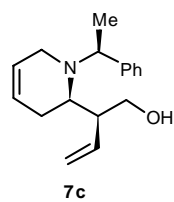
¹³C NMR 100 MHz, rt, CDCl₃



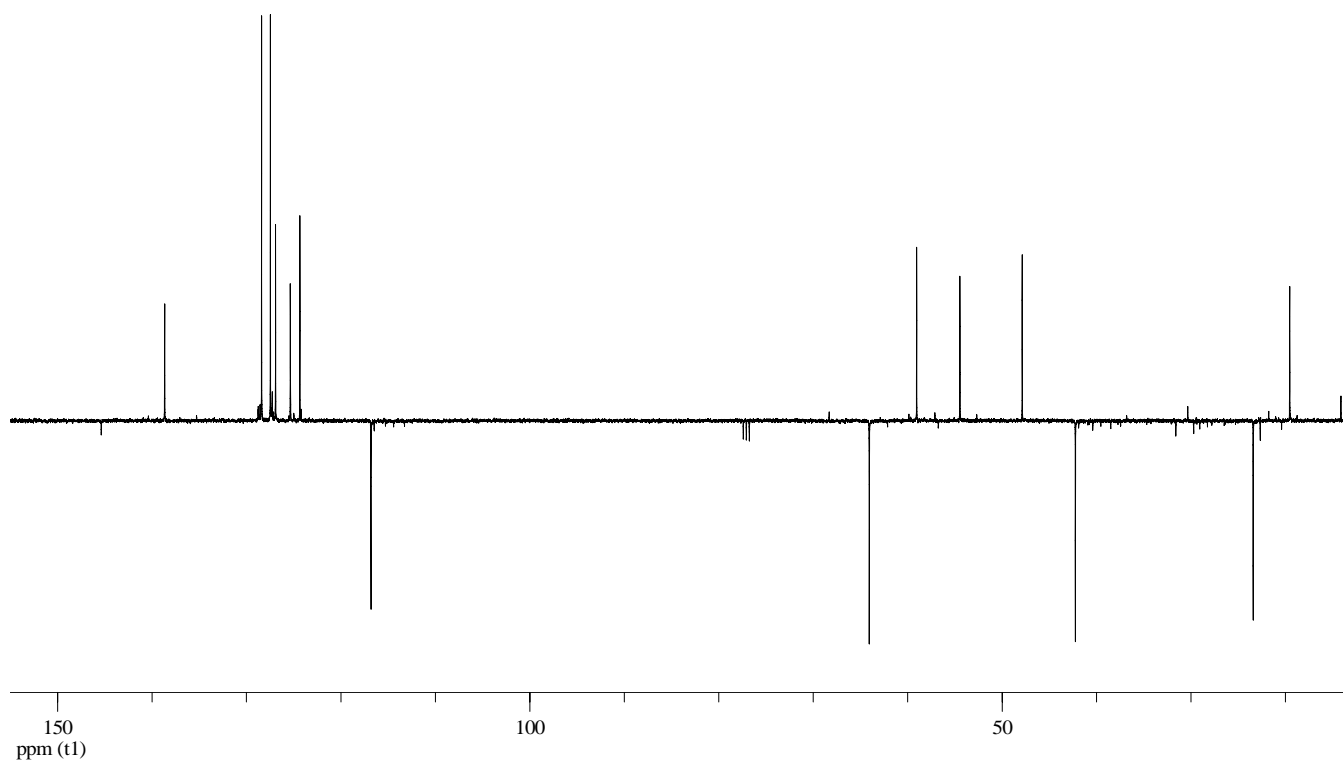
^1H NMR 400 MHz, rt, CDCl_3



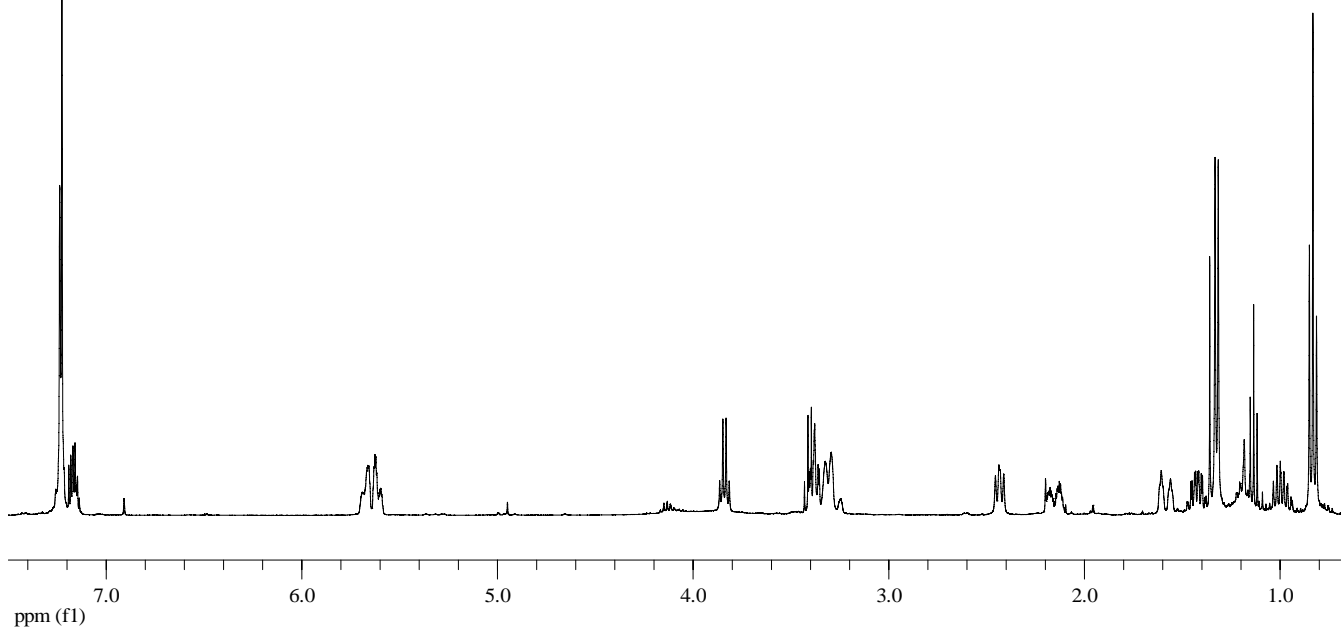
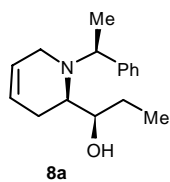
^{13}C NMR 100 MHz, rt, CDCl_3



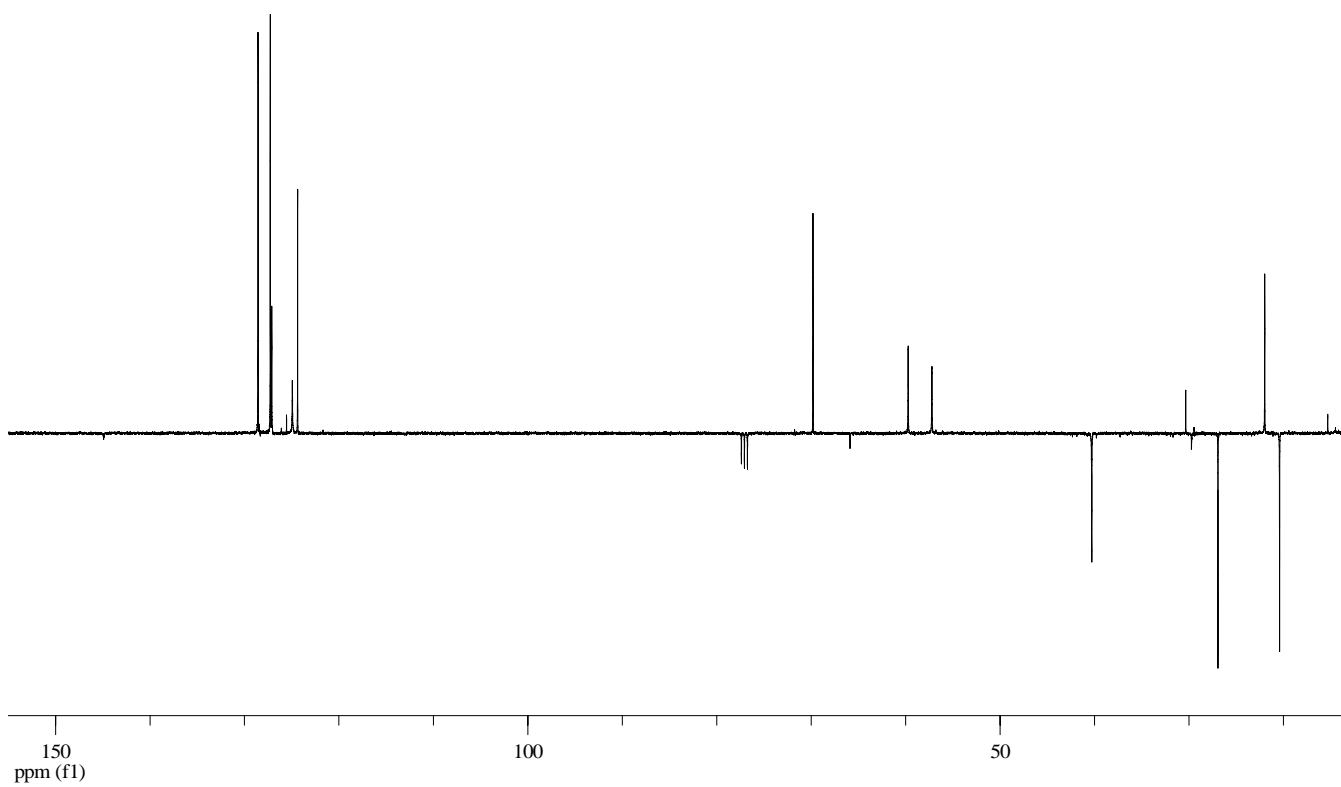
¹H NMR 400 MHz, rt, CDCl₃



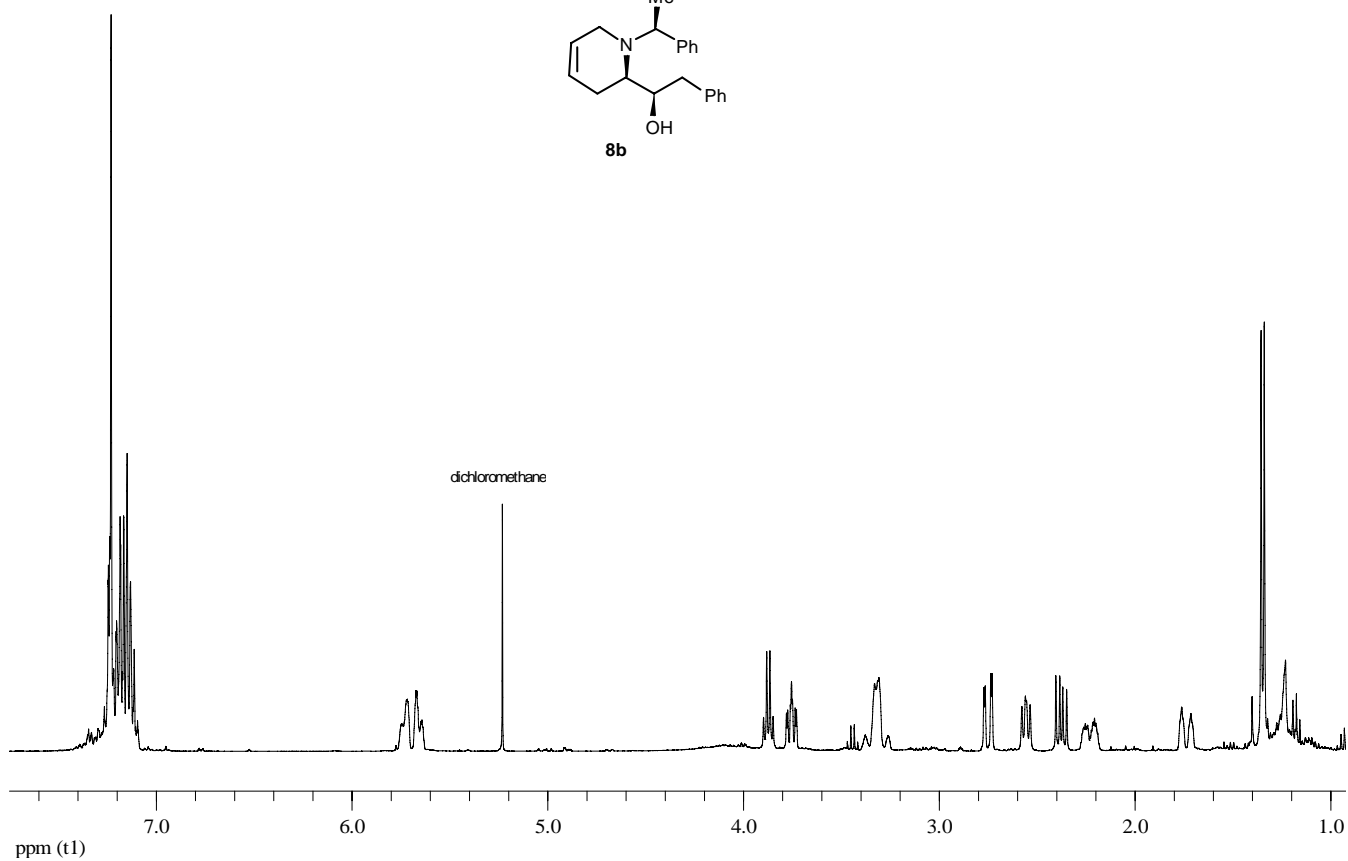
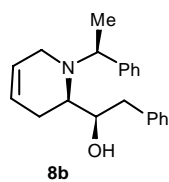
¹³C NMR 100 MHz, rt, CDCl₃



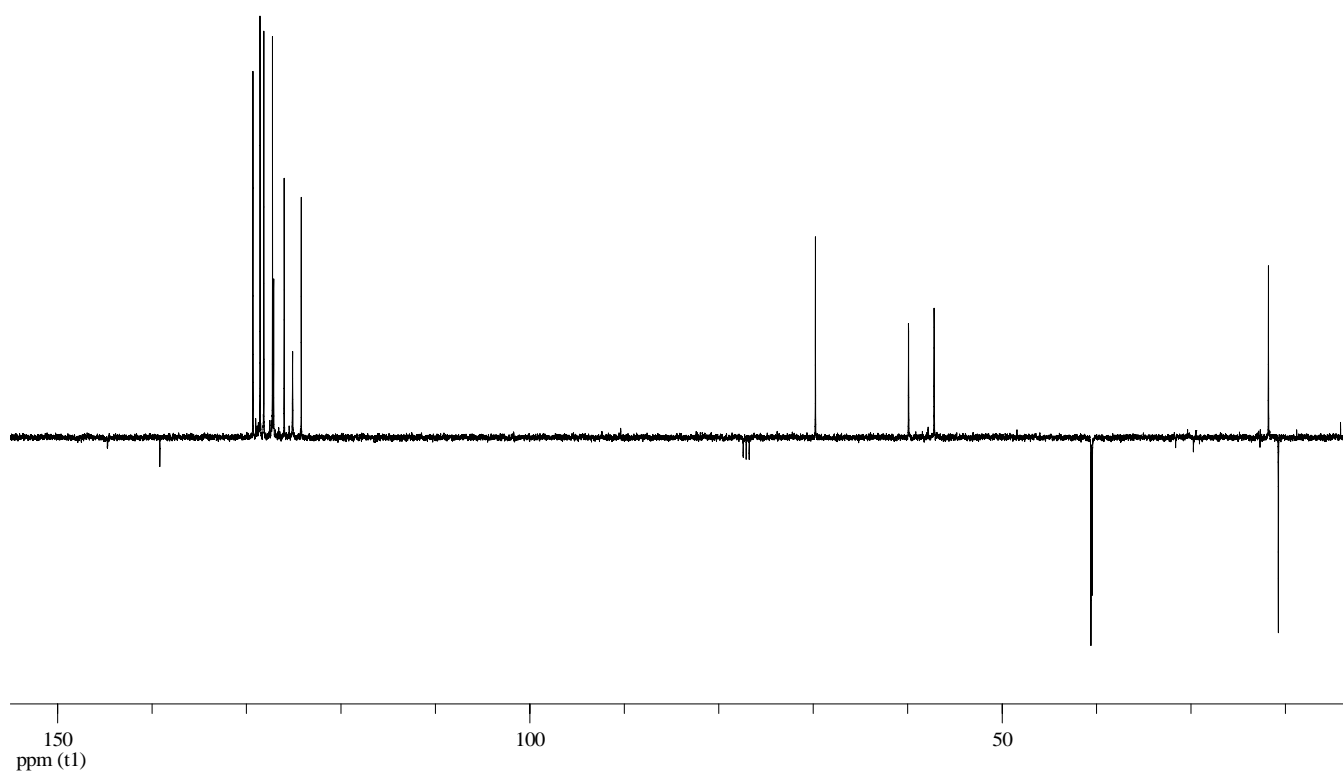
^1H NMR 400 MHz, rt, CDCl_3



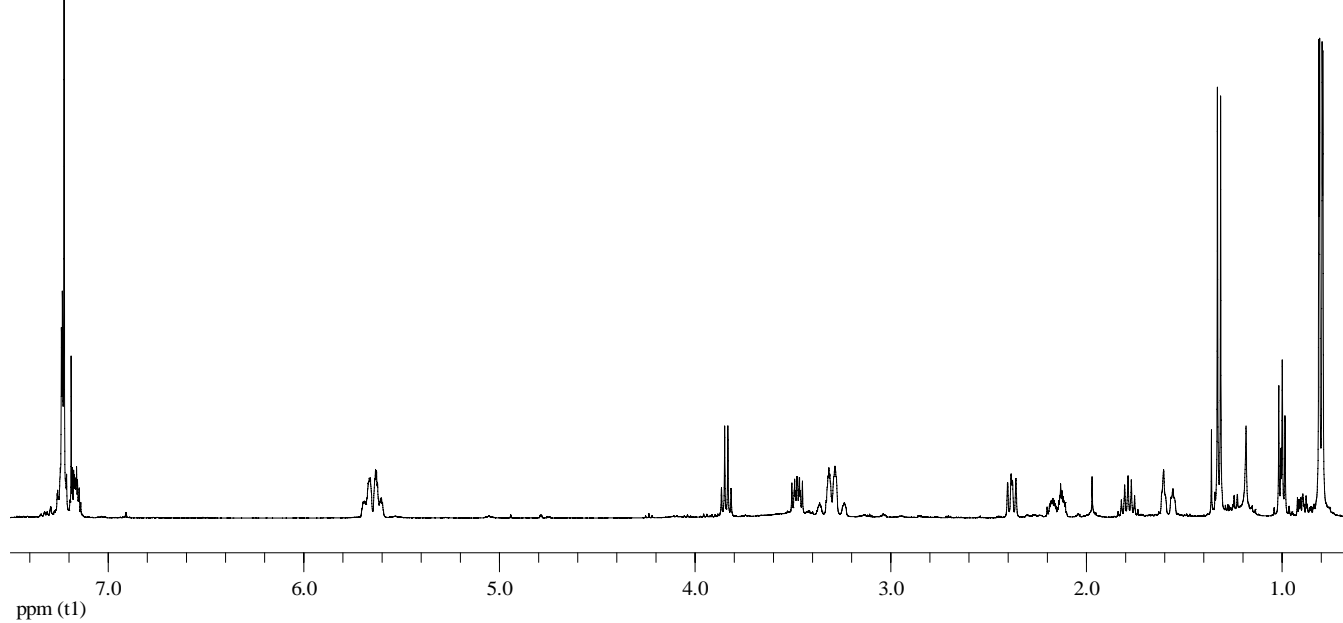
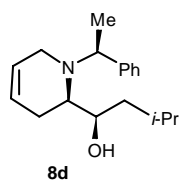
^{13}C NMR 100 MHz, rt, CDCl_3



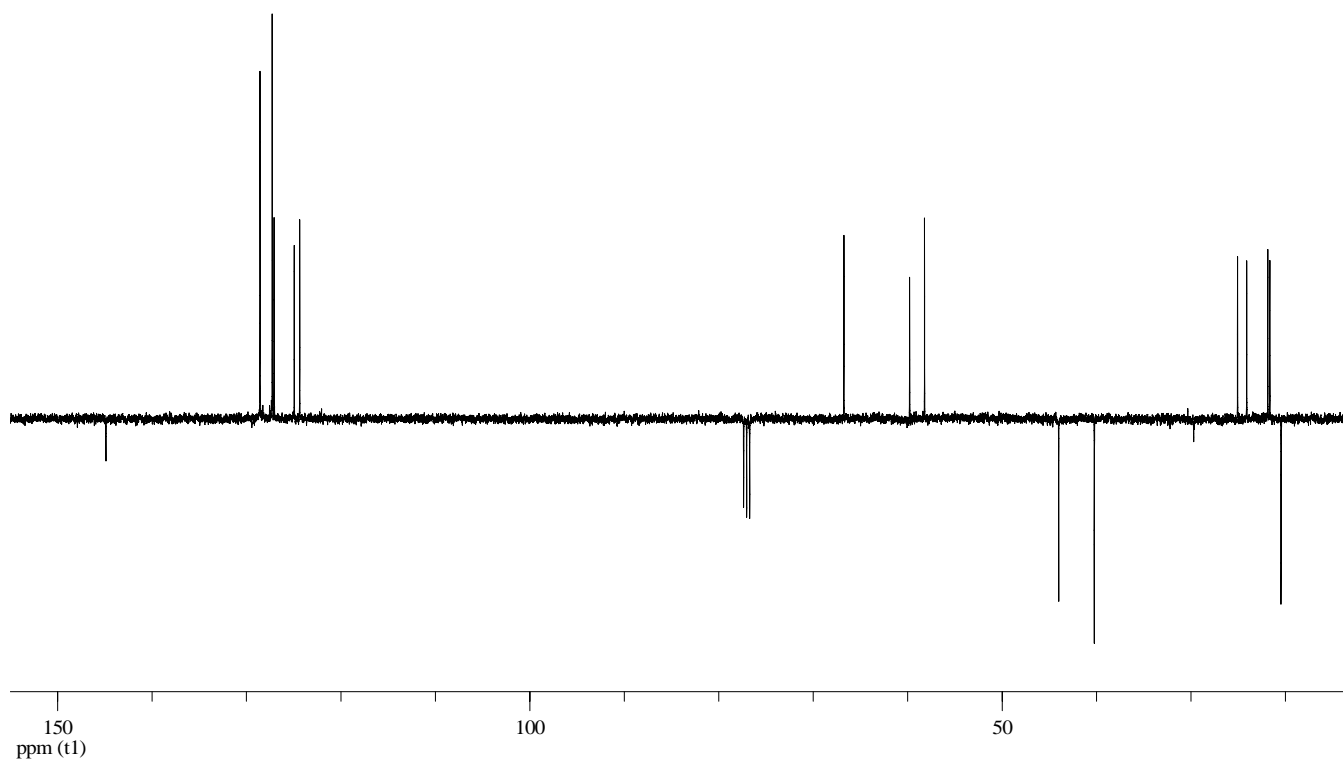
¹H NMR 400 MHz, rt, CDCl₃



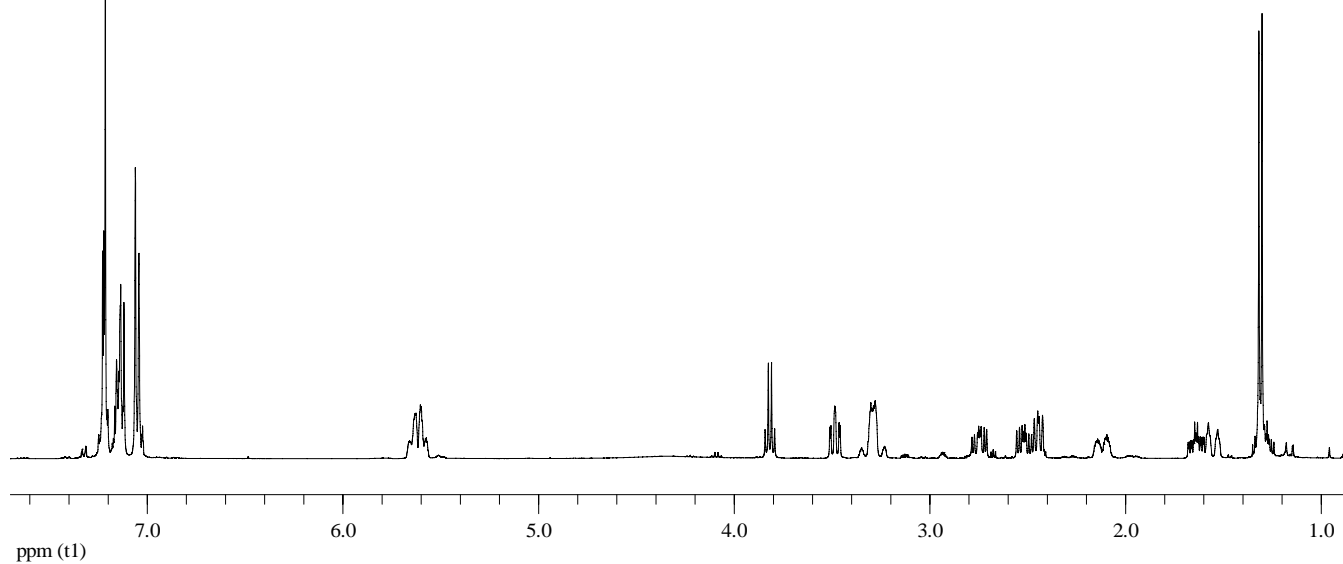
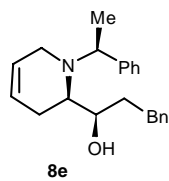
¹³C NMR 100 MHz, rt, CDCl₃



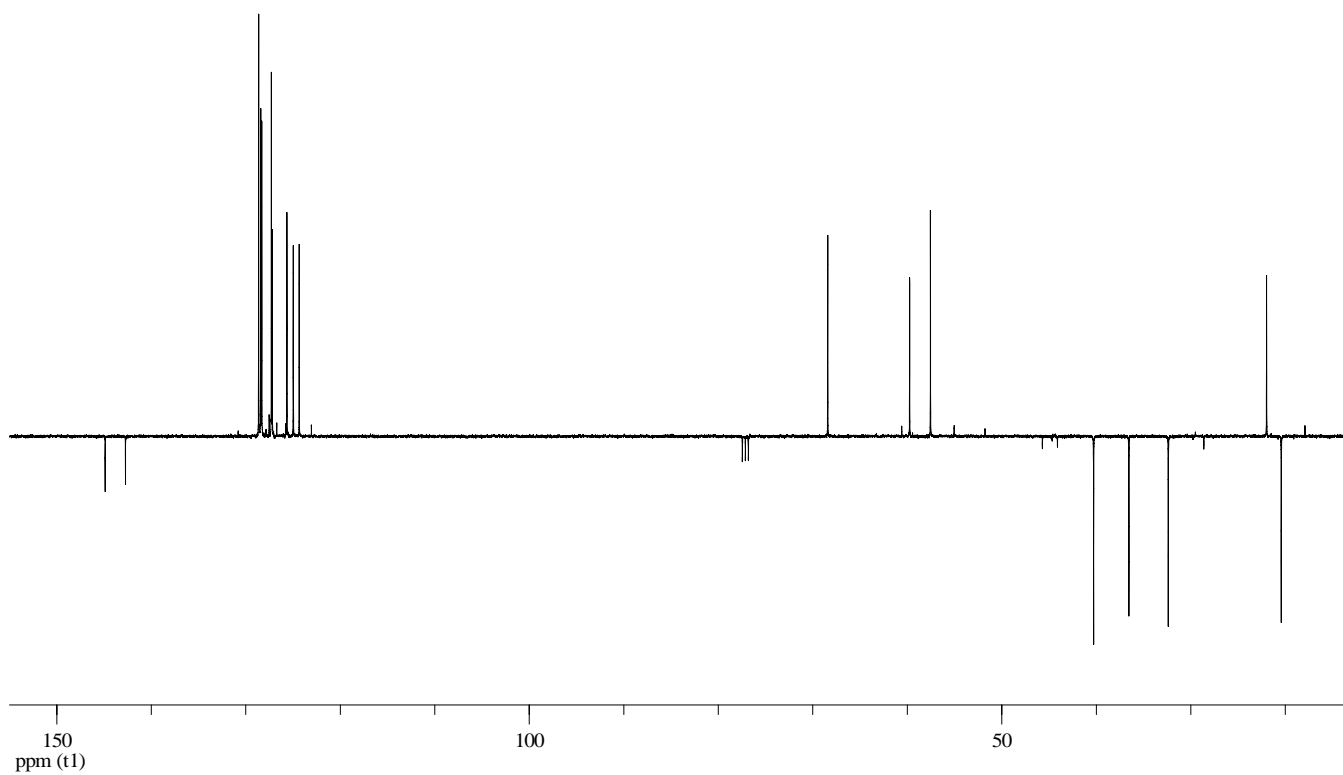
$^1\text{H NMR}$ 400 MHz, rt , CDCl_3



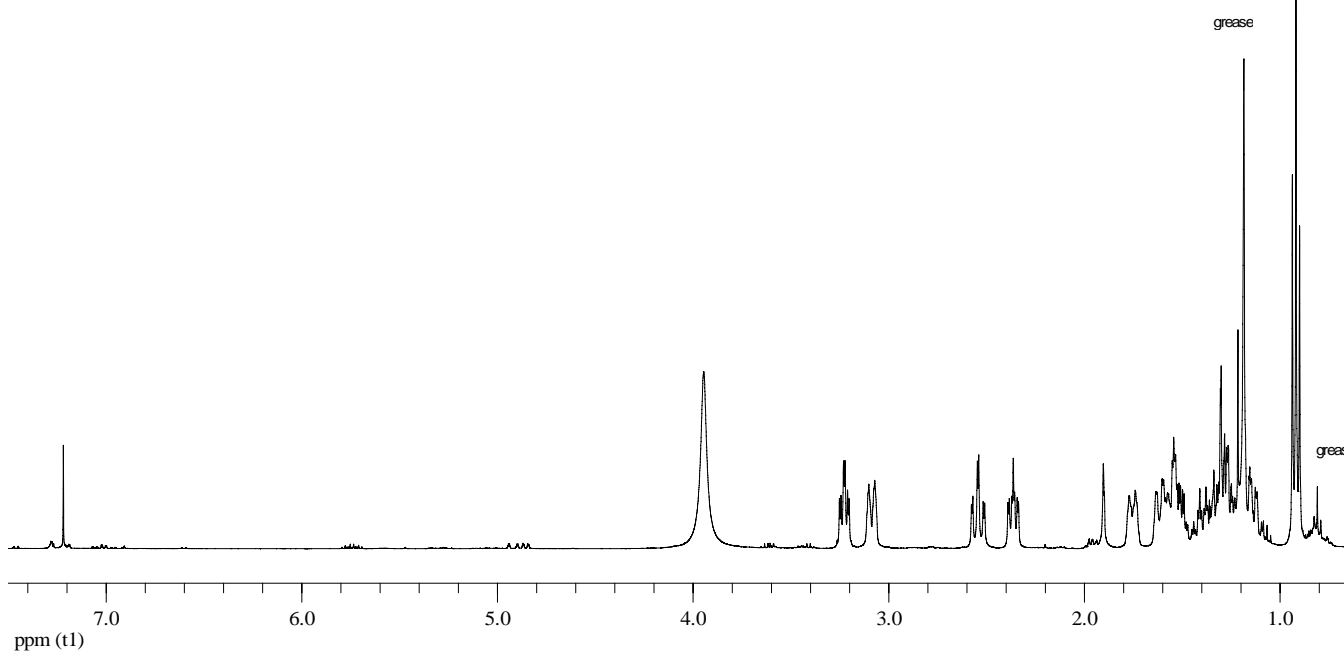
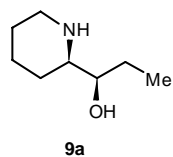
$^{13}\text{C NMR}$ 100 MHz, rt , CDCl_3



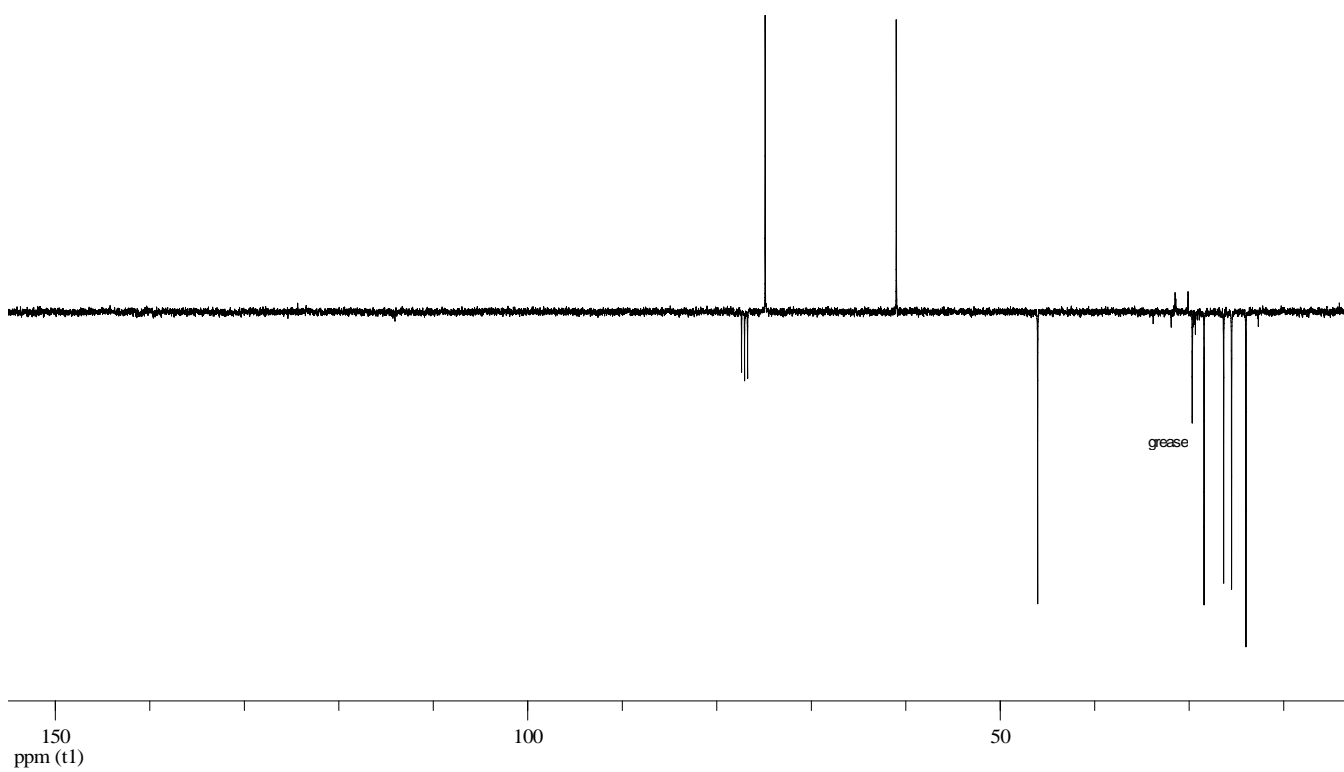
^1H NMR 400 MHz, rt, CDCl_3



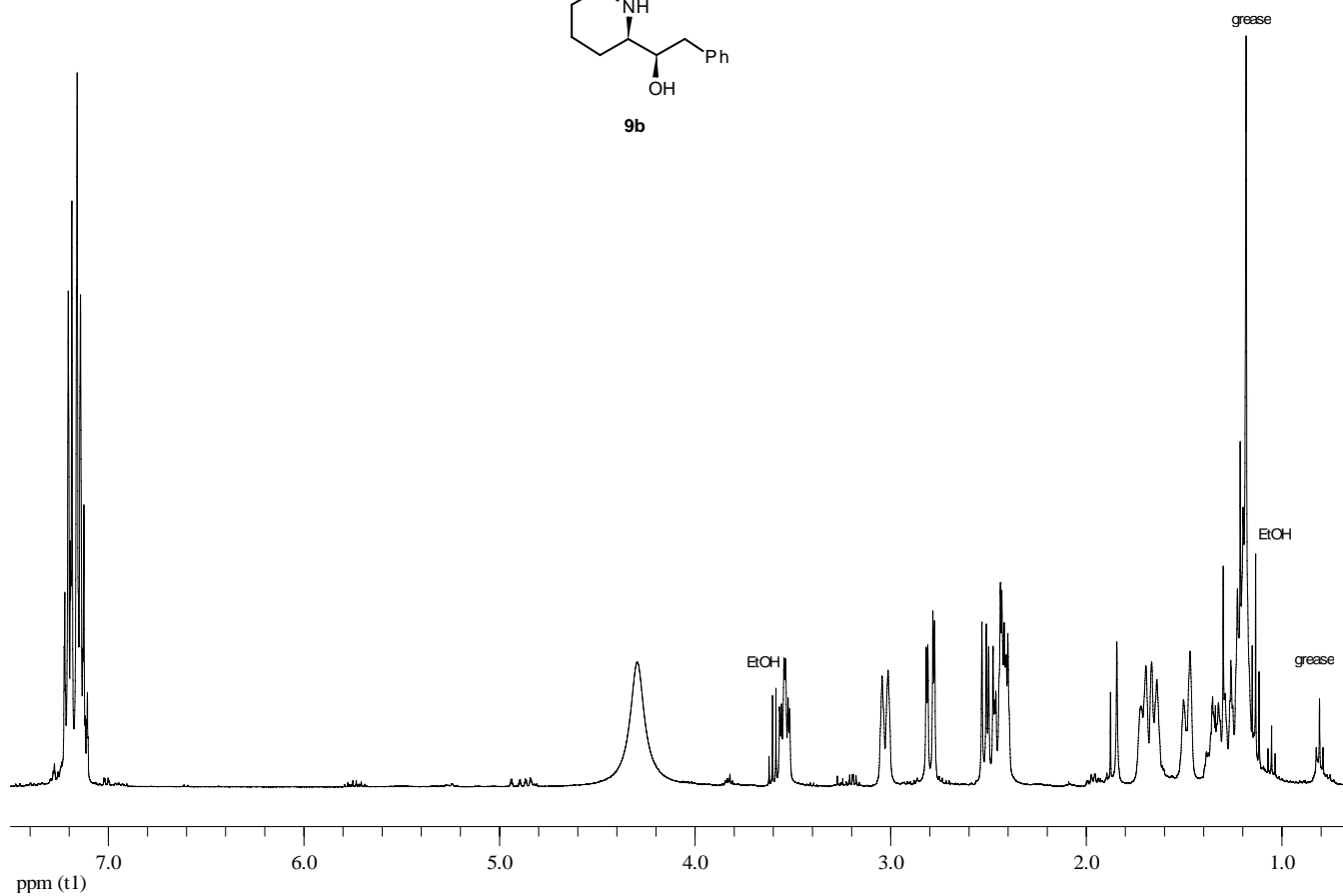
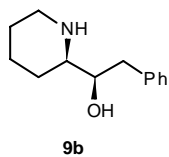
^{13}C NMR 100 MHz, rt, CDCl_3



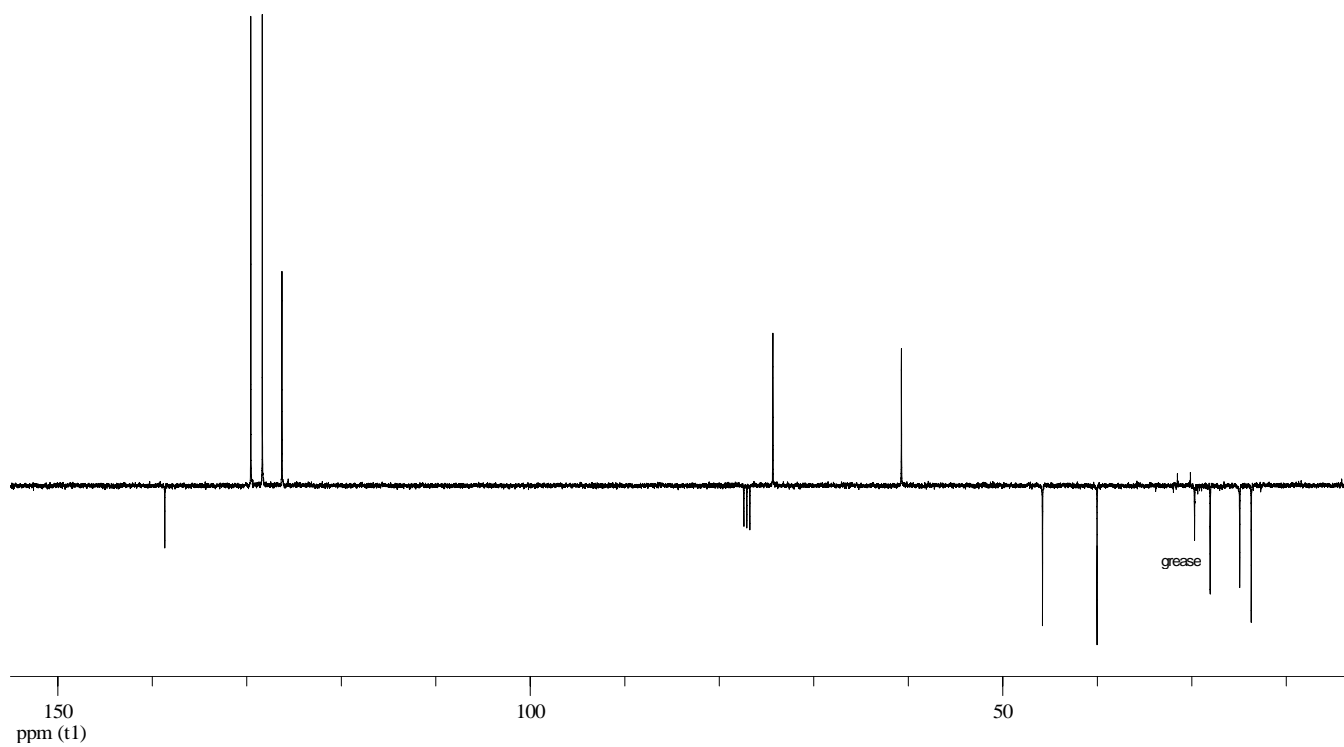
^1H NMR 400 MHz, rt, CDCl_3



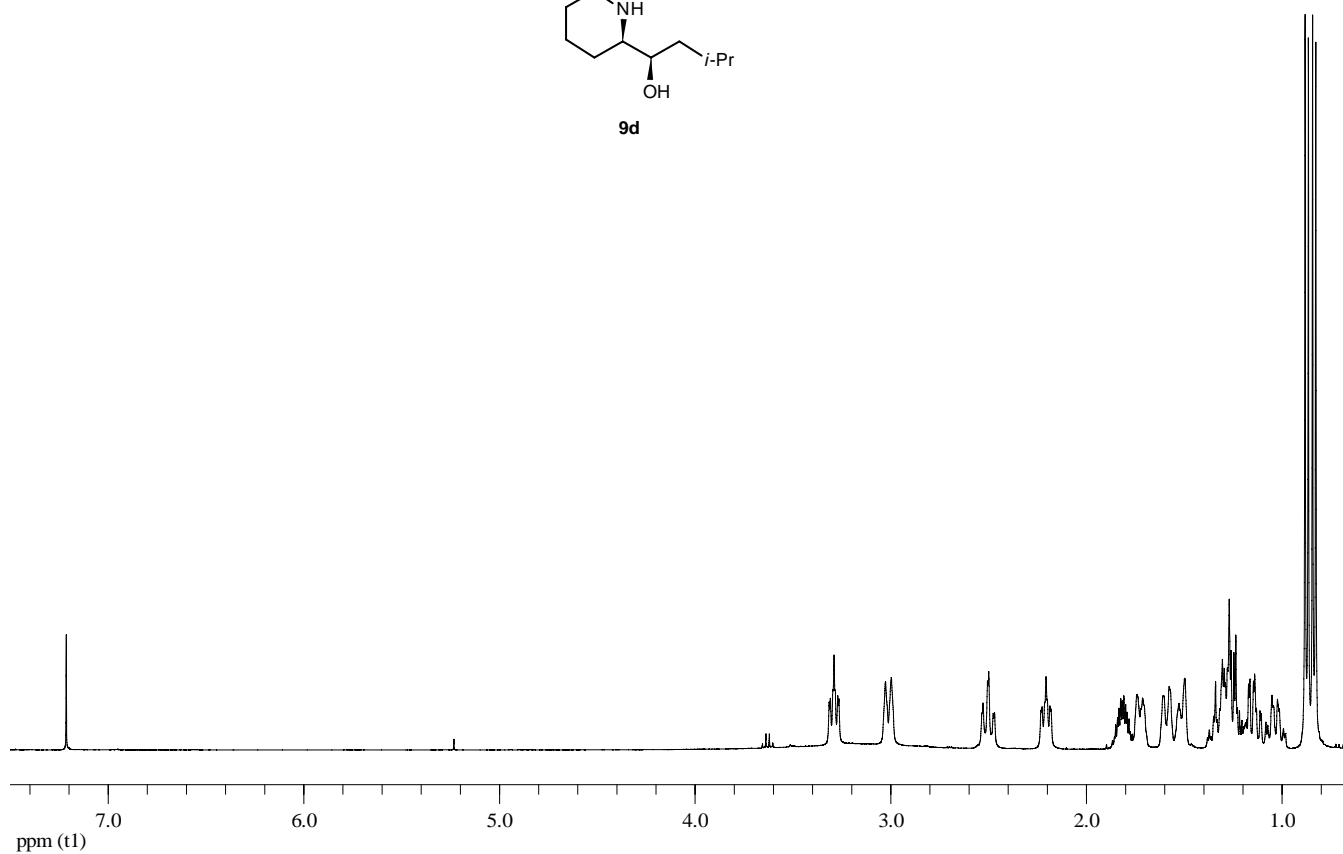
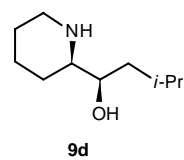
^{13}C NMR 100 MHz, rt, CDCl_3



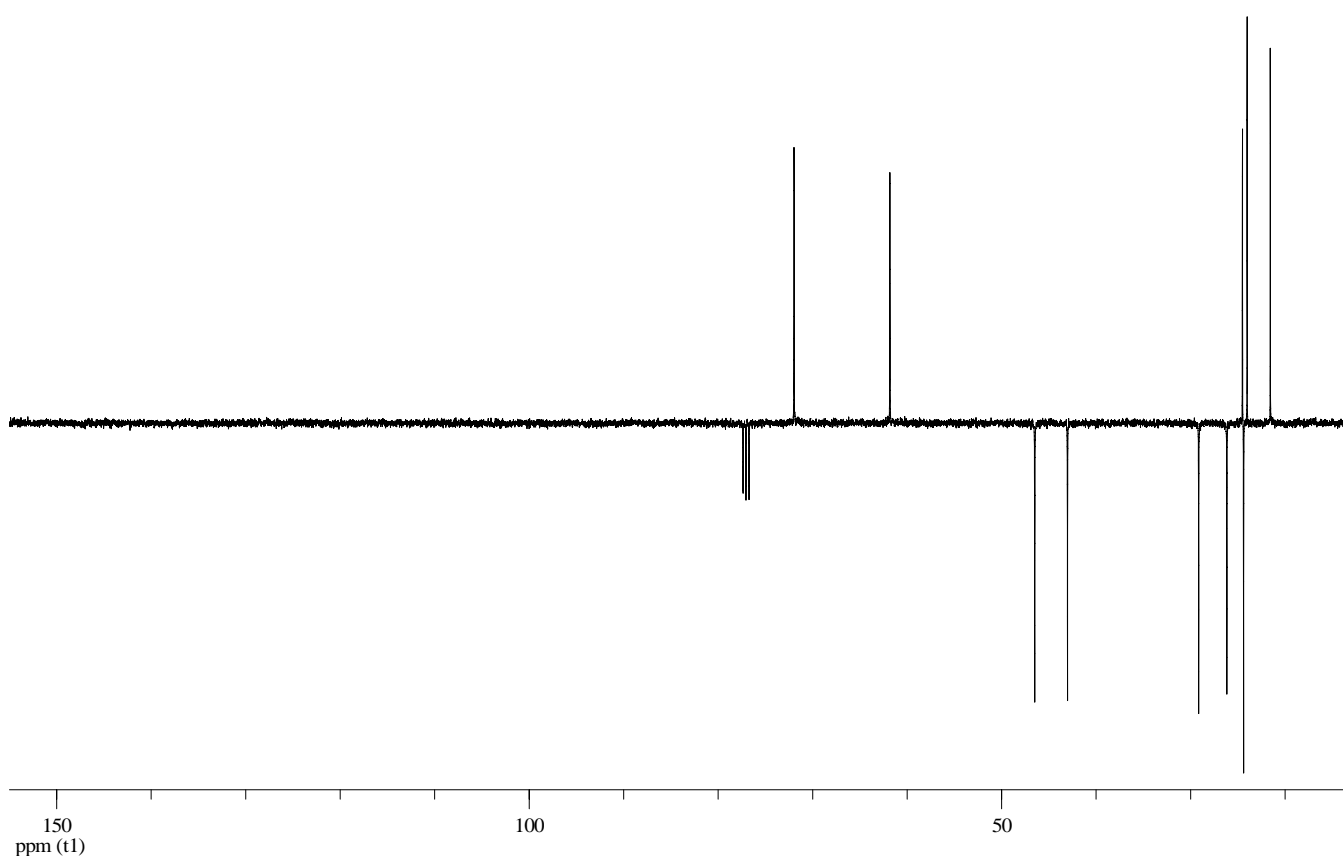
^1H NMR 400 MHz, rt, CDCl_3



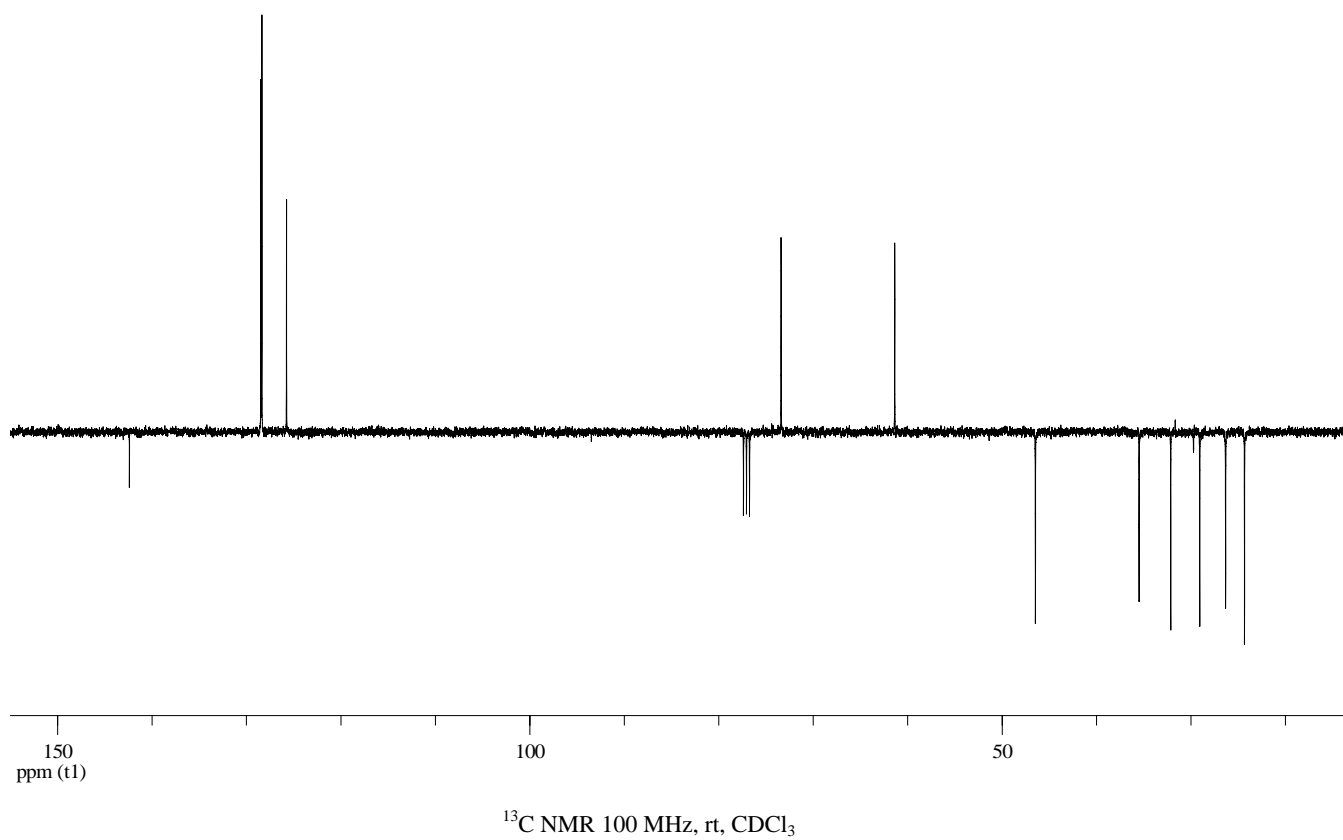
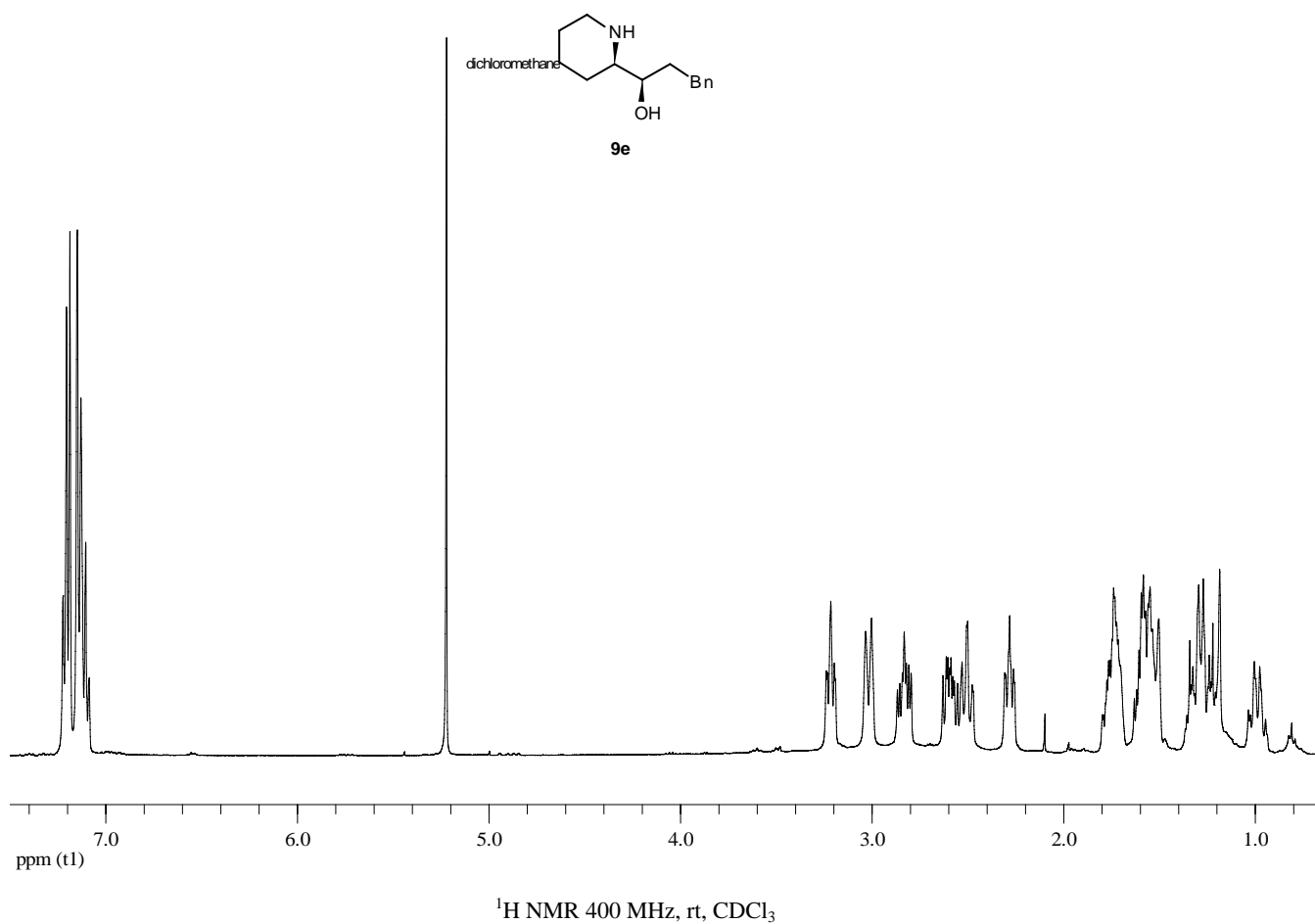
^{13}C NMR 100 MHz, rt, CDCl_3

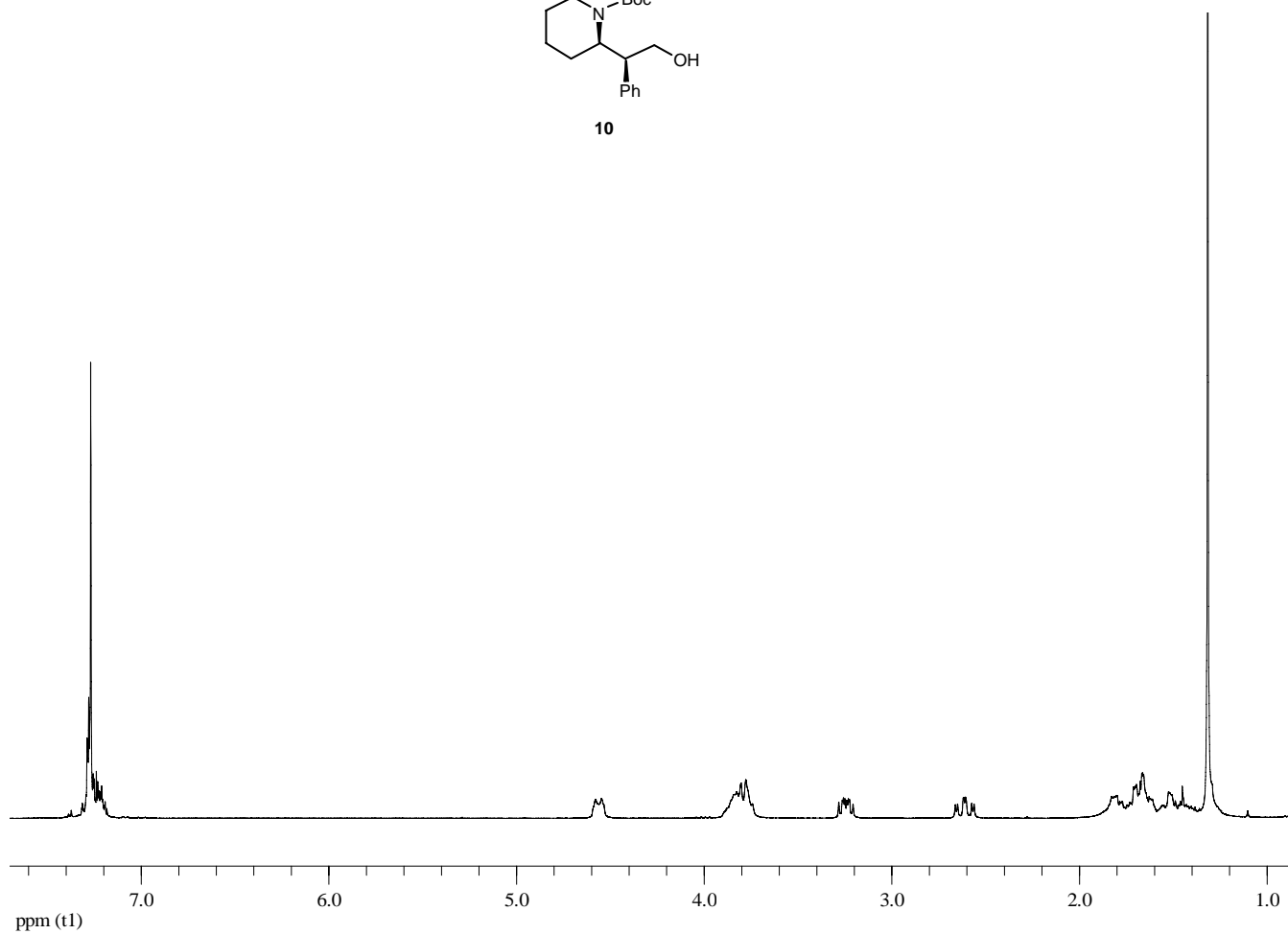
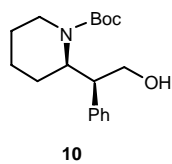


^1H NMR 400 MHz, rt, CDCl_3

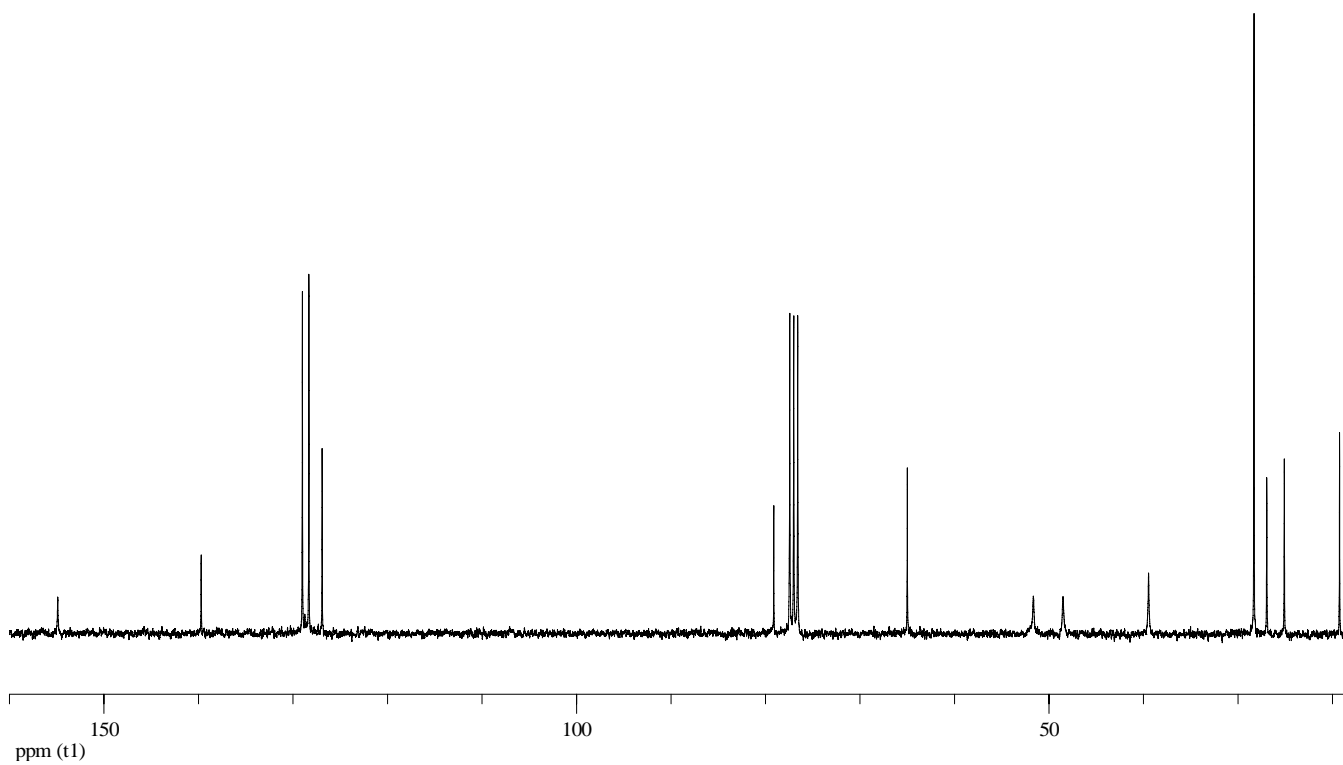


^{13}C NMR 100 MHz, rt, CDCl_3

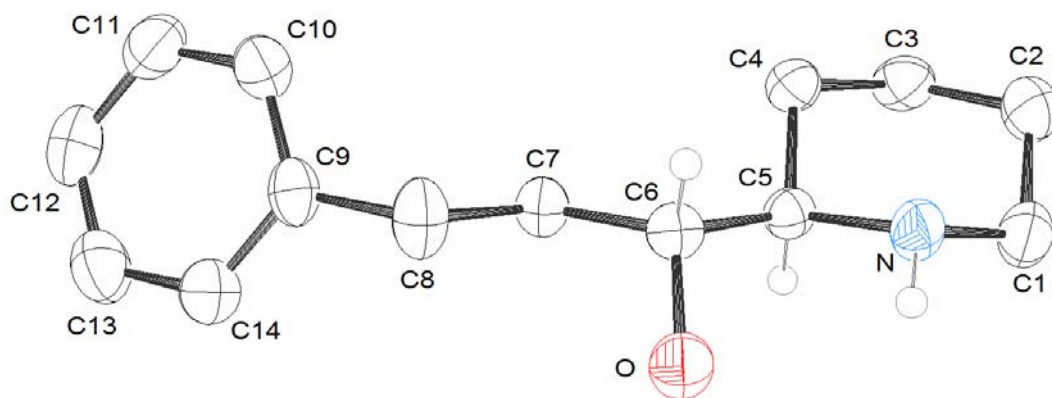




^1H NMR 300 MHz, 333 K, CDCl_3



^{13}C NMR 75 MHz, 333K, CDCl_3



ORTEP drawing of compound **9e**. Thermal ellipsoids are at 50% probability level.