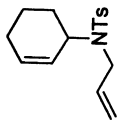


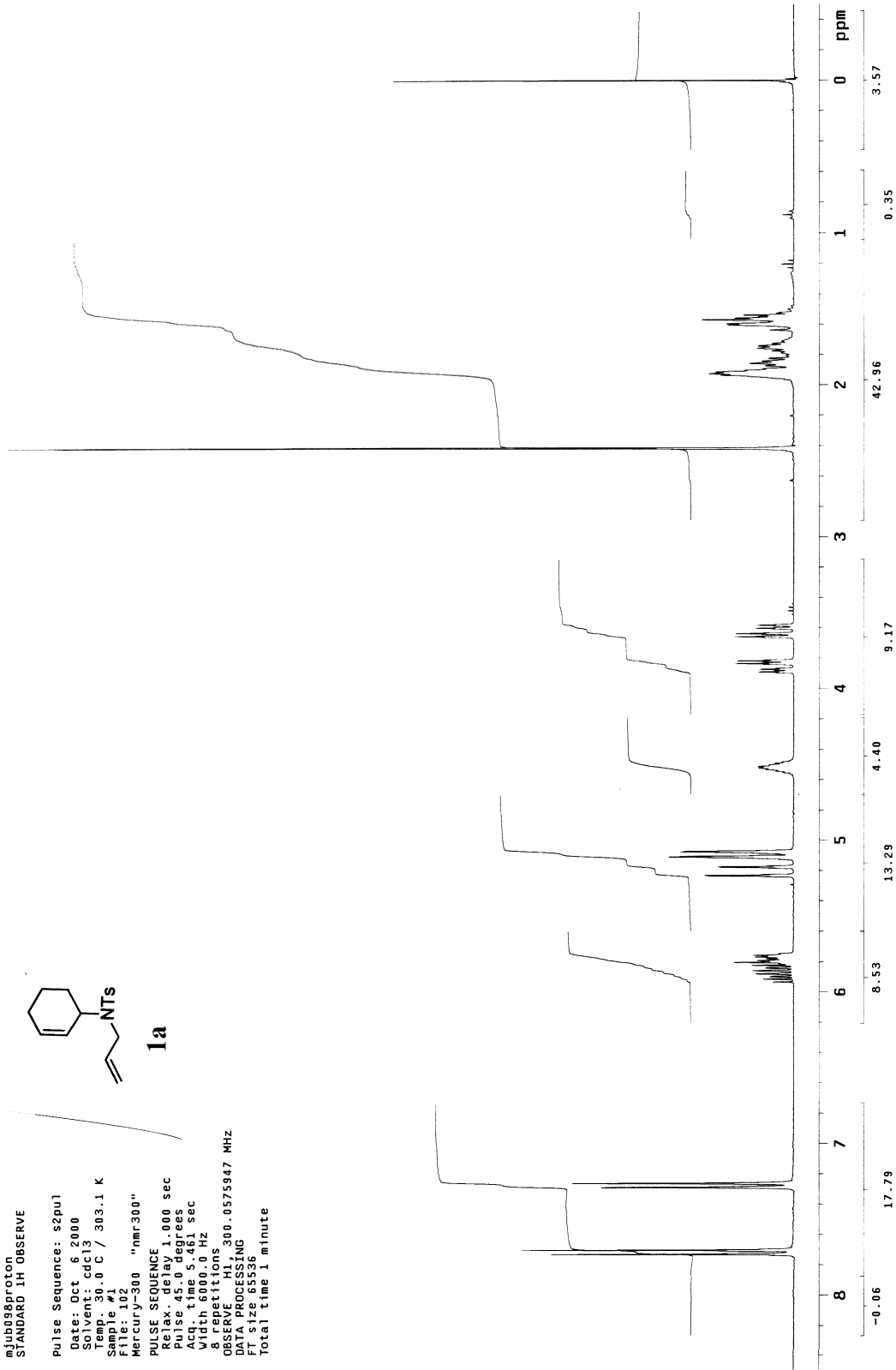
mjob09proton
STANDARD 1H OBSERVE

Pulse sequence: s2pu1
Date: Oct 6 2000
Solvent: cdcl3
Temp: 30.0 C / 303.1 K
Sample #1
File: 102
Mercury-300 "nmr300"

PULSE SEQUENCE
Relax. delay 1.000 sec
Pulse 45.0 degrees
Acq. time 5.461 sec
Width 6000.0 Hz
8 repetitions
OBSERVE H1, 300.0575947 MHz
DATA PROCESSING
File size 88336
Total time 1 minute



1a



mjob088carbon
13C OBSERVE

Pulse Sequence: s2pu1

Date: Oct 6 2000

Operator: jls

Temp: 30.0 C / 303.1 K

Sample #5

File: 502

Mercury-300 "nmr300"

PULSE SEQUENCE

Relax delay 1.000 sec

Pulse 45.0 degrees

Acq. time 1.815 sec

Width 17000.0 Hz

256 repetitions

OBSERVE C13, 75.4495244 MHz

DECOUPLE H1, 300.0590417 MHz

Power 39 dB

Channel 13 on

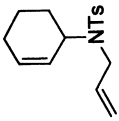
VALIDATED

DATA PROCESSING

Line broadening 1.0 Hz

FT size 65536

Total time 12 minutes



1a

129.813
127.716
127.324

132.632

136.772

138.559

143.187

116.734

77.725
77.298
76.872

55.665

46.747

29.102

24.688
21.965

21.724

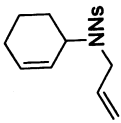
200 180 160 140 120 100 80 60 40 20 ppm

mju138chcorrelation
STANDARD 1H OBSERVE

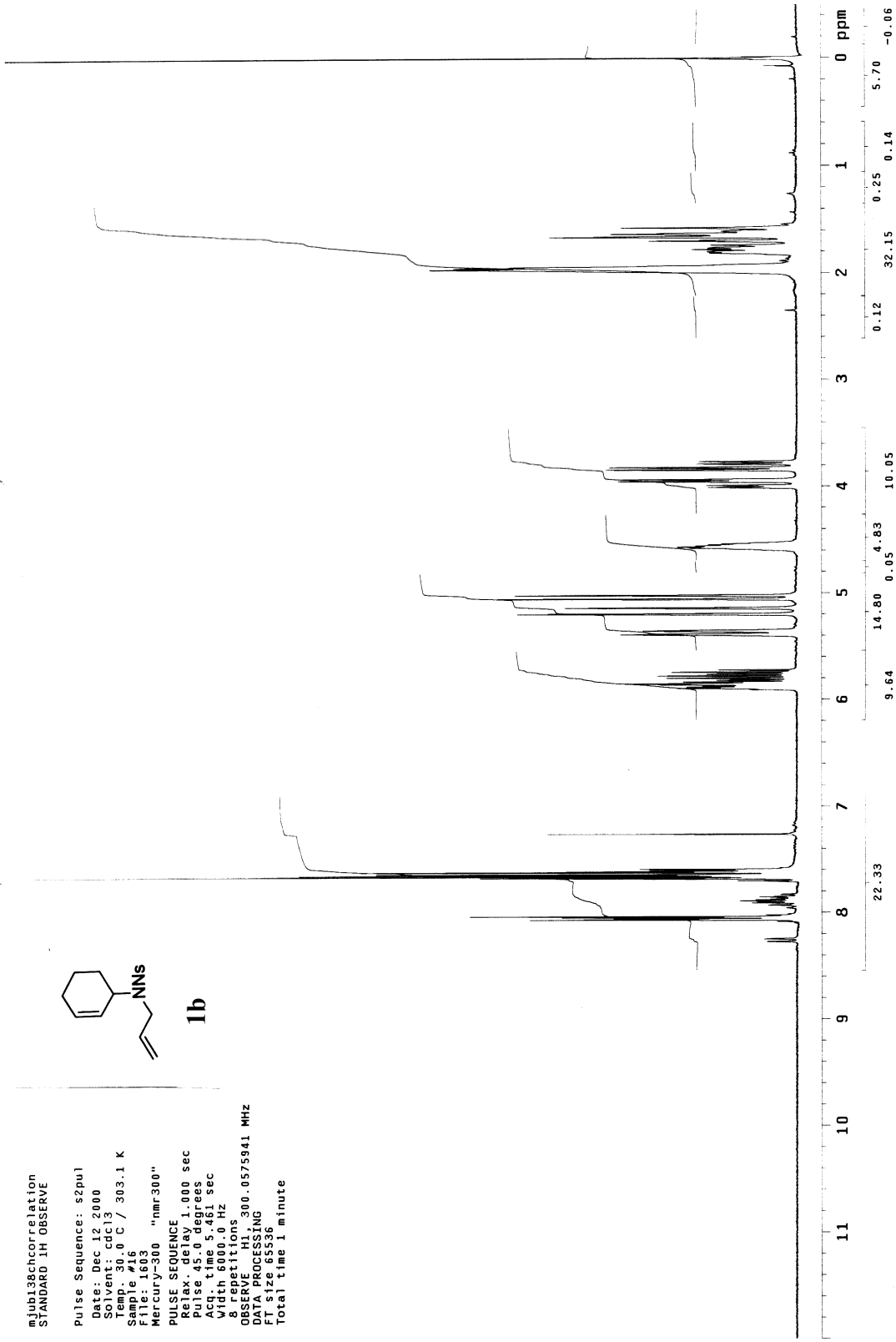
Pulse Sequence: s2pul
Date: Dec 12 2000
Solvent: cdCl3
Temp: 30.0 C / 303.1 K
Sample #16
File: 1603
Mercury-300 "nmr300"

PULSE SEQUENCE
Relax. delay 1.000 sec
Pulse 45.0 degrees
Acq. time 5.461 sec
Width 6000.0 Hz
8 repetitions

OBSERVE H1, 300.0575941 MHz
DATA PROCESSING
F1 size 85336
Total time 1 minute



1b

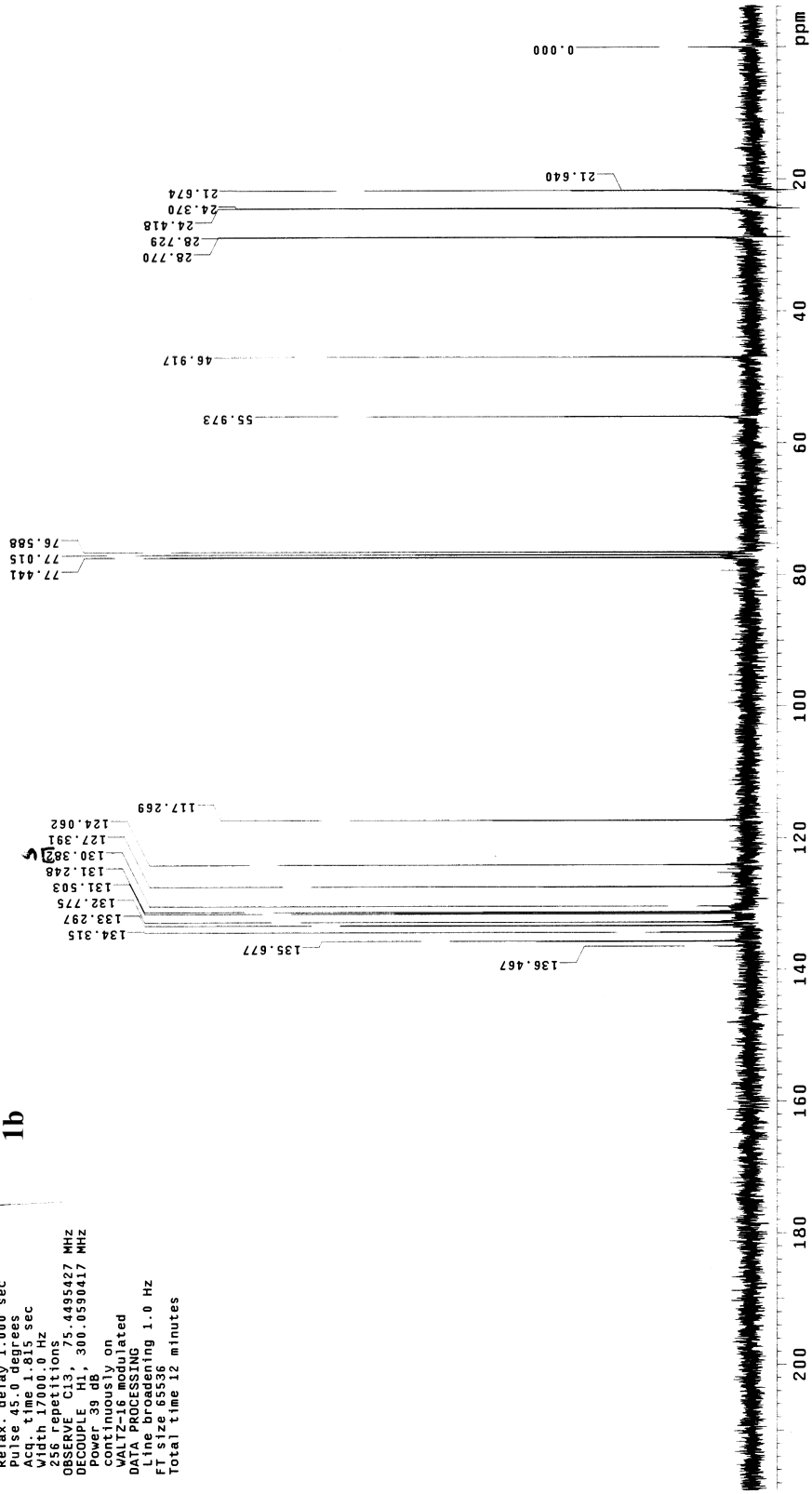
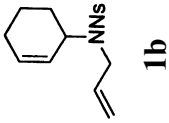


mjob18carbon
13C OBSERVE

Pulse Sequence: s2pul
Date: Dec 12 2000
Solvent: cdCl3
Temp: 30.0 C / 303.1 K
Sample #16
File: 1602
Mercury-300 "nmr300"

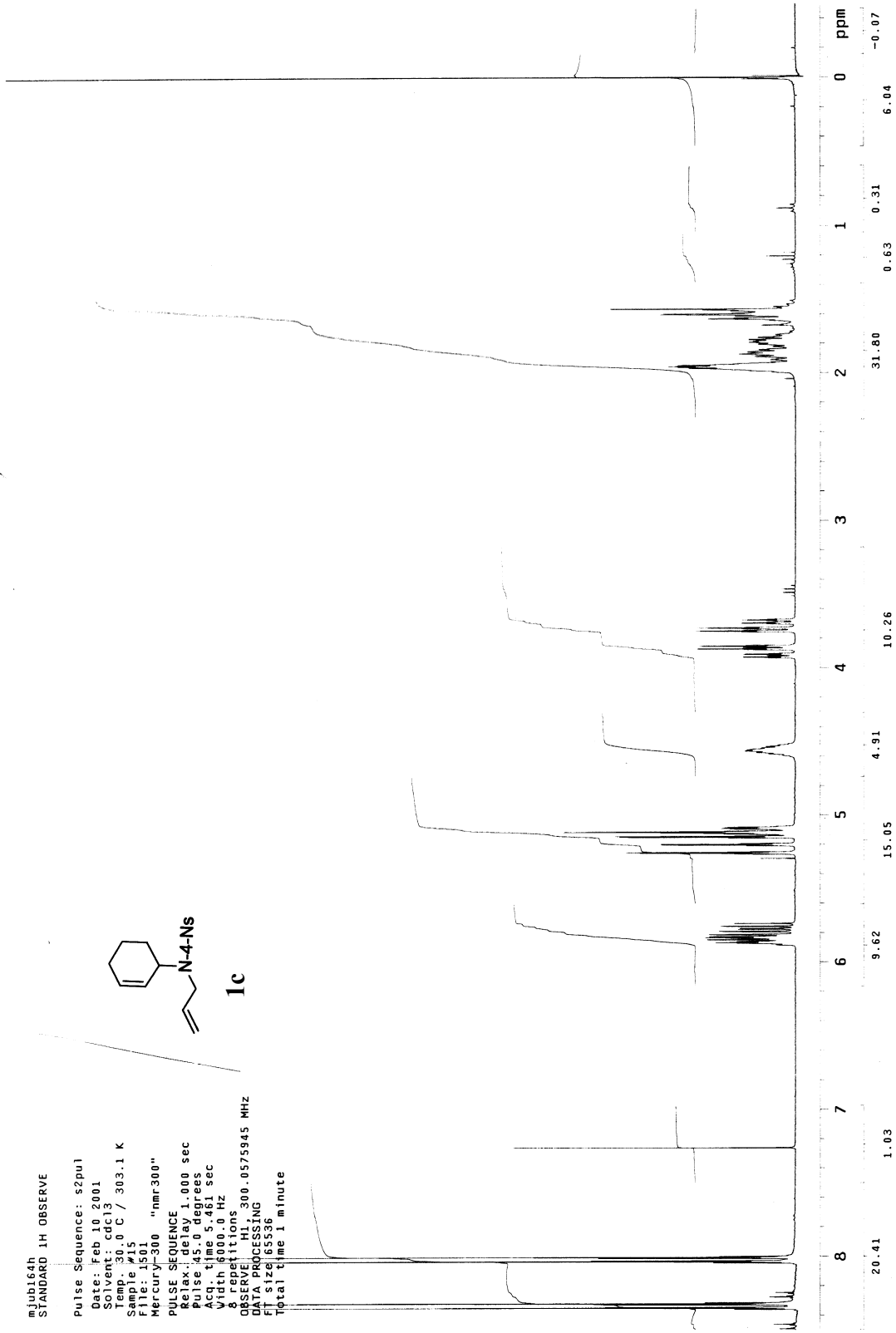
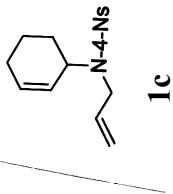
PULSE SEQUENCE
Relax. delay 1.000 sec
Pulse 45.0 degrees
Acq. time 1.815 sec
Width 17000.0 Hz
256 repetitions

OBSERVE C13, 75.4495427 MHz
DECOUPLE H1, 300.0590417 MHz
Power 39 dBV on
Channel 13 on
WALTZ-16 modulated
DATA PROCESSING
Line broadening 1.0 Hz
FT size 65536
Total time 12 minutes



nJul164h
STANDARD 1H OBSERVE

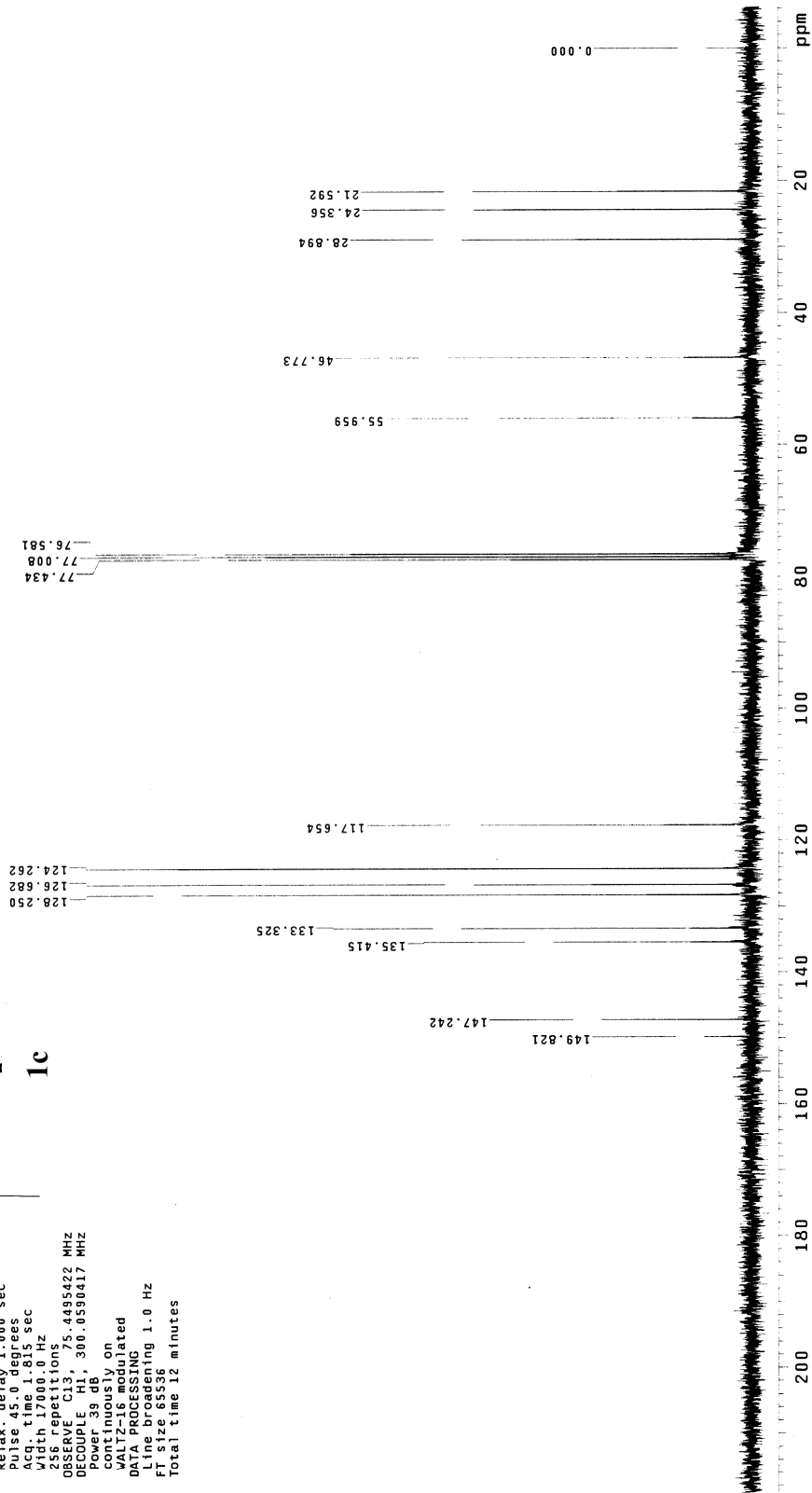
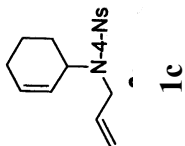
Pulse Sequence: s2pul
Date: Feb 10 2001
Solvent: cdcl3
Temp: 30.0 C / 303.1 K
Sample #15
File: 1501
Mercury-300 "nmr300"
PULSE SEQUENCE
Relax: delay 1.000 sec
Pulse: 45.0 degrees
Acq. time 5.461 sec
Width 6000.0 Hz
8 repetitions
OBSERVE: HL, 300.0575945 MHz
DATA PROCESSING
File size 65336
Total time 1 minute



mjb164carbon
13C OBSERVE

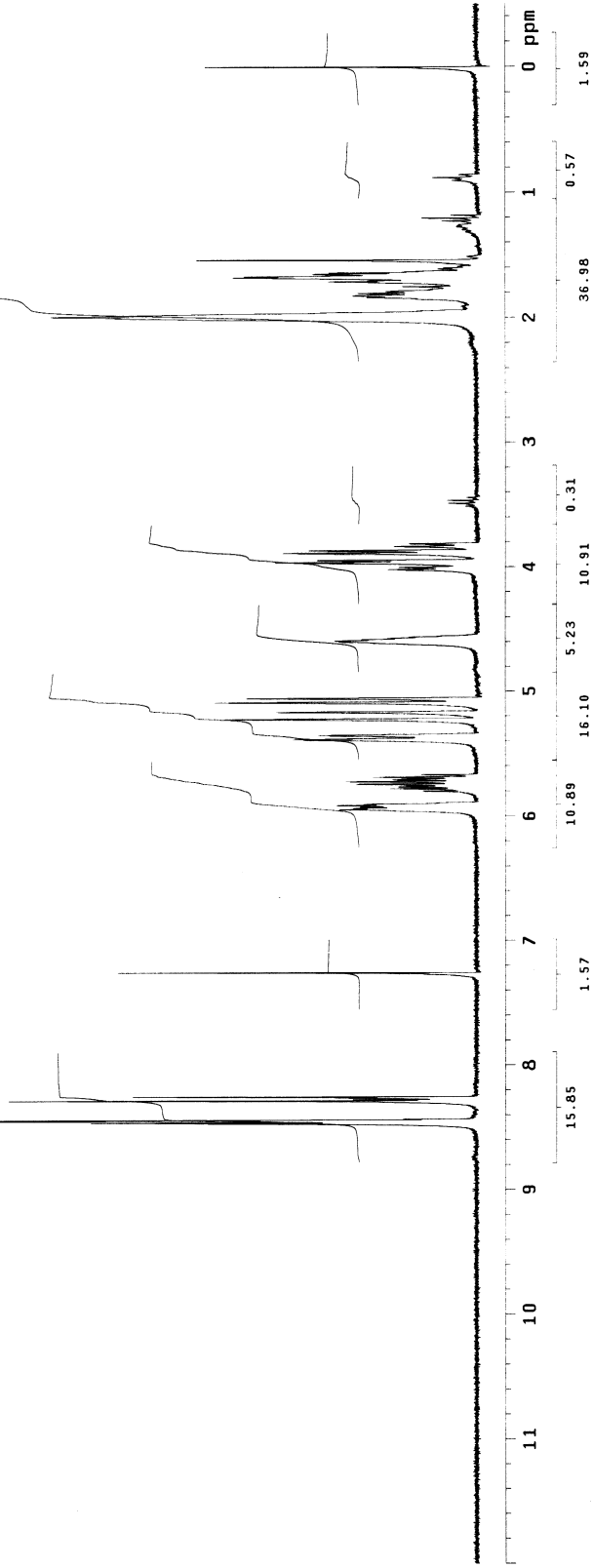
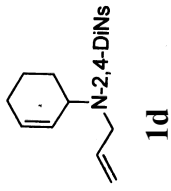
Pulse Sequence: s2pu1
Date: Feb 10 2001
Solvent: cdcl3
Temp. 30.0 C / 303.1 K
Sample #18
File: 1801
Mercury-300 "nmr300"

PULSE SEQUENCE
Relax. delay 1.000 sec
Pulse 45.0 degrees
Acq. time 1.815 sec
Width 17000.0 Hz
256 repetitions
OBSERVE C13, 75.485422 MHz
PULSE 39 dB, 300.6590417 MHz
continuously on
WALTZ-16 modulated
DATA PROCESSING
Line broadening 1.0 Hz
FT size 65536
Total time 12 minutes



njun120solid
STANDARD 1H OBSERVE

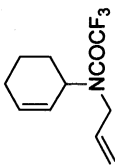
Pulse Sequence: s2pu1
Date: Nov 17 2000
Solvent: cdCl3
Temp: 30.0 C / 303.1 K
Sample #22
File: 2201
Mercury-300 "nmr300"
PULSE SEQUENCE
Relax. delay 1.000 sec
Pulse 45.0 degrees
Acq. time 5.461 sec
Width 6000.0 Hz
8 repetitions
OBSERVE HI, 300.0575952 MHz
DATA PROCESSING
F1 size 18536
Total time 1 minute



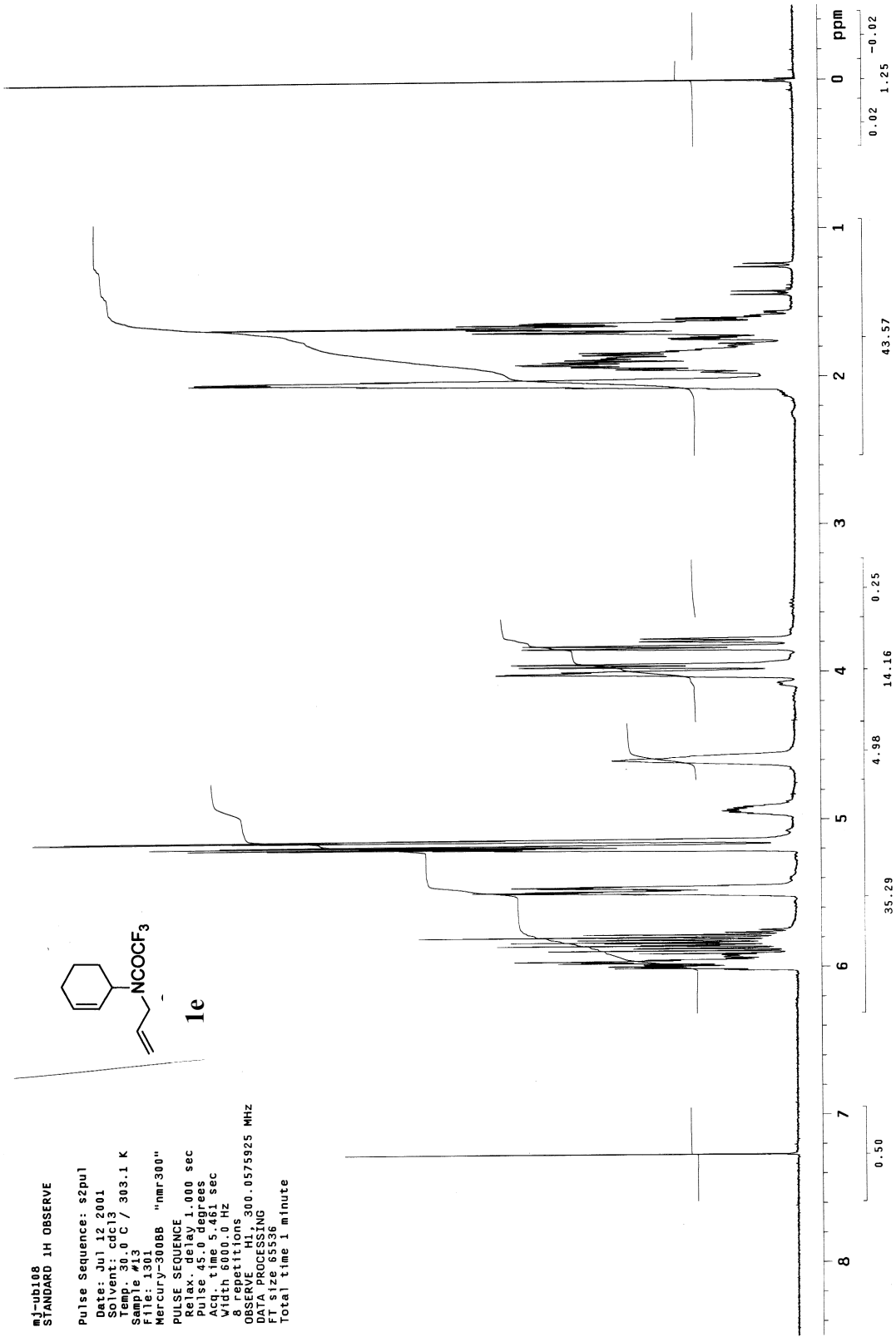
mJ-ub108
STANDARD 1H OBSERVE

Pulse Sequence: s2pul
Date: Jul 12 2001
Solvent: cdCl3
Temp: 30.0 C / 303.1 K
Sample: 103
C13
Mercury-30088 "nmr300"

PULSE SEQUENCE
Relax. delay 1.000 sec
Pulse prg: zgpg30
Acq. time: 5.481 sec
Width: 6000.0 HZ
8 repetitions
OBSERVE H1, 300.0575925 MHZ
DATA PROCESSING
FT size 65536
Total time 1 minute



1e



mj-ub108
13C OBSERVE

Pulse Sequence: s2pul

Date: Jul 12 2001
Time: 16:13

Temp: 30.0 C / 303.1 K

Sample #13

File: 1302

Mercury-3000B "nmr300"

PULSE SEQUENCE

Relax delay 1.000 sec

Pulse 45.0 degrees

Acq. time 1.815 sec

Width 17000.0 Hz

1024 repetitions

OBSERVE C13, 75.4495244 MHz

Power 39 dB

Continuously on

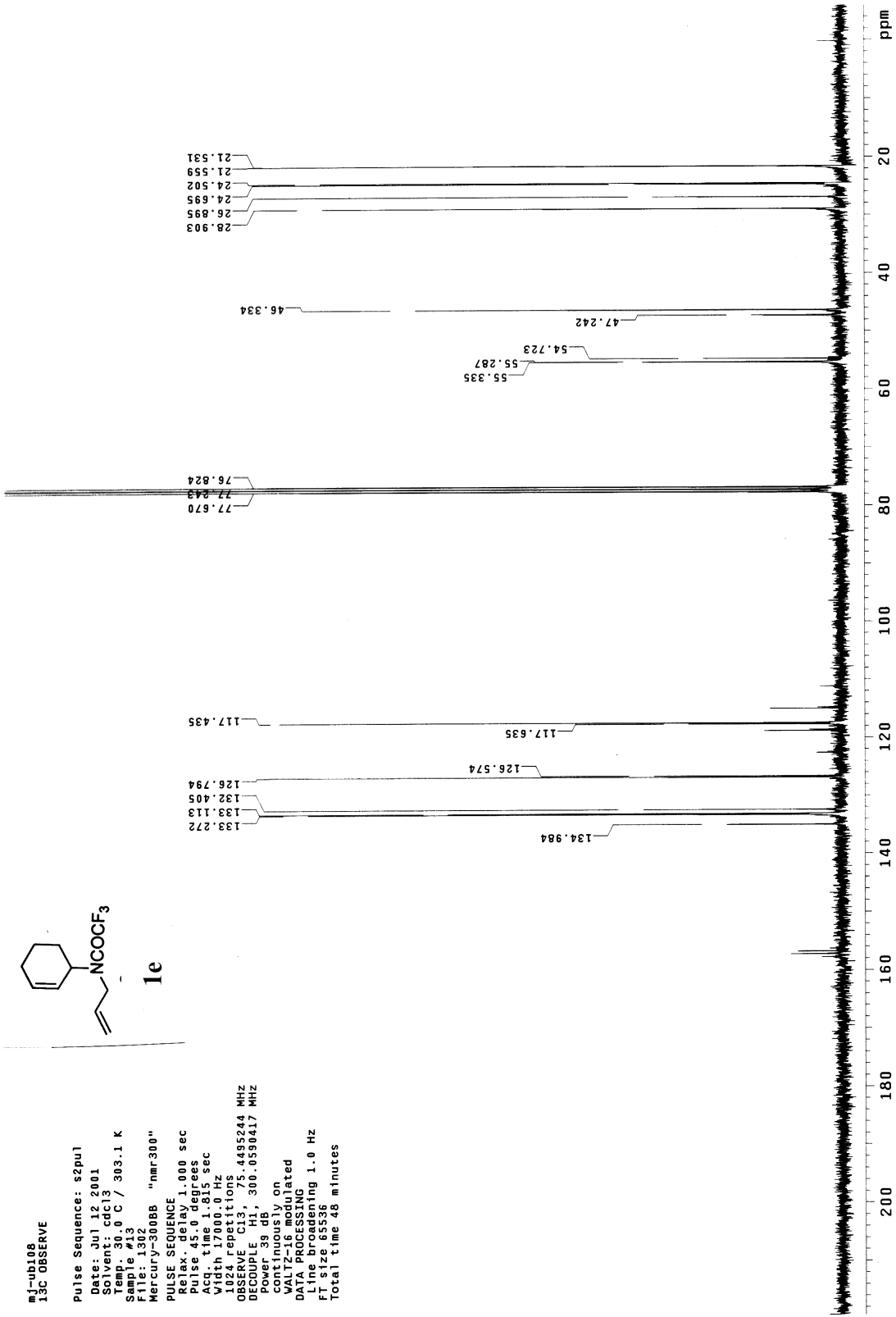
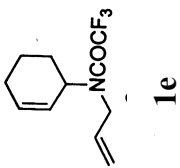
VOLTAGE MODULATED

DATA PROCESSING

Line broadening 1.0 Hz

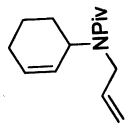
FT size 65536

Total time 48 minutes

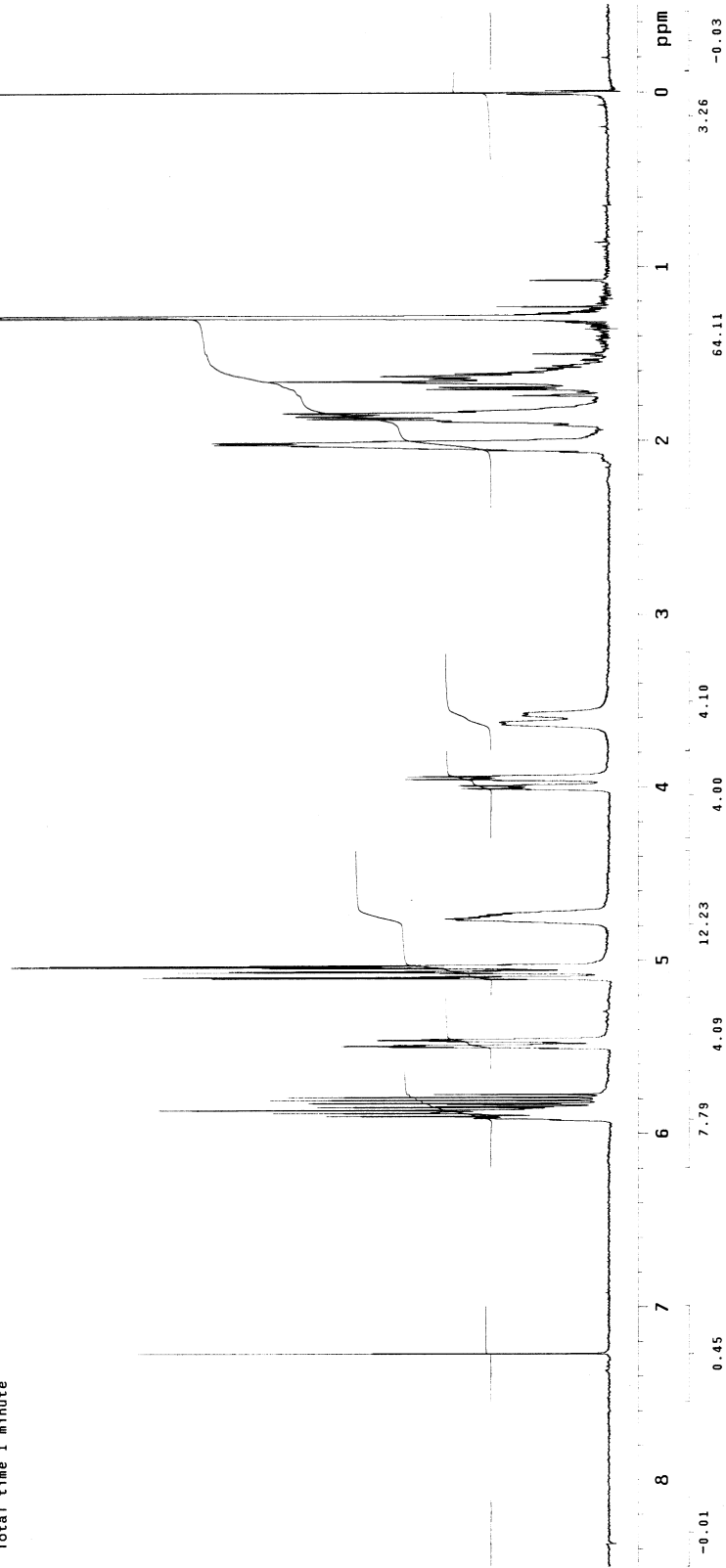


MUBI5FPROTON
STANDARD 1H OBSERVE

Pulse Sequence: sZpu1
Date: Feb 10 2001
Solvent: cdCl3
Temp: 30.0 C / 303.1 K
Sample #19
File: 1901
Mercury-300 "nmr300"
PULSE SEQUENCE
Relax. delay 1.000 sec
Pulse 45.0 degrees
Acq. time 5.461 sec
Width 6000.0 Hz
8 repetitions
OBSERVE HL 300.0575823 MHz
DATA PROCESSING
File: 1901
Total time 1 minute

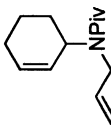


1f

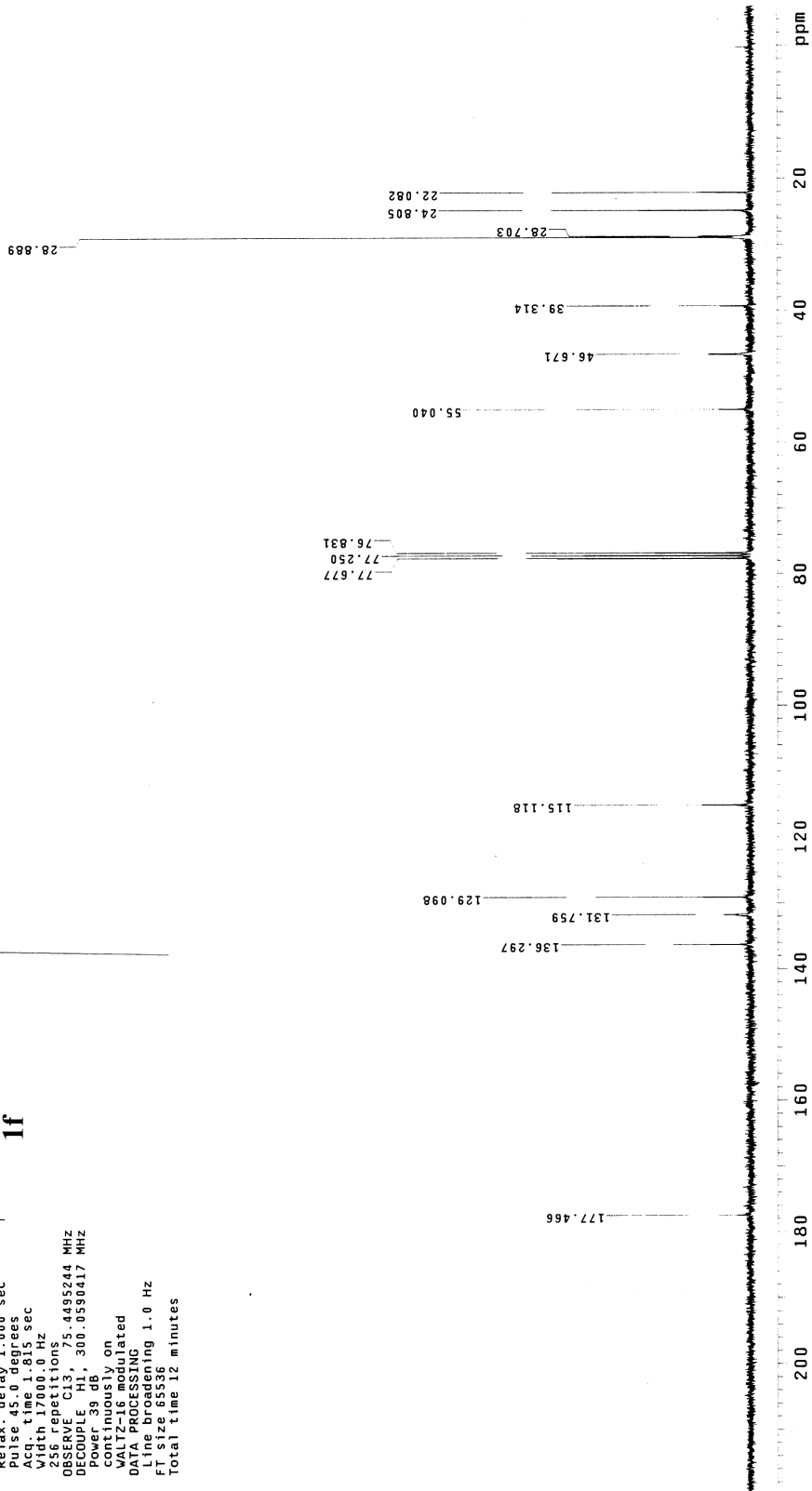


mj10165carbon
13C OBSERVE

Pulse Sequence: s2pul
Date: Feb 10 2001
Solvent: cdCl3
Temp: 30.0 C / 303.1 K
Sample #19
File: 1902
Mercury-300 "nmr300"
PULSE SEQUENCE
Relax: delay 1.000 sec
Pulse 45.0 degrees
Acq. time 1.815 sec
Width 17000.0 Hz
256 repetitions
OBSERVE C13, 75.4455244 MHz
DECOUPLE H1, 300.0590417 MHz
Power 35 dB
C13 frequency on
Channel 1
VOLT-16 modulated
DATA PROCESSING
Line broadening 1.0 Hz
FT size 65536
Total time 12 minutes

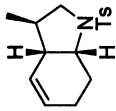


1f

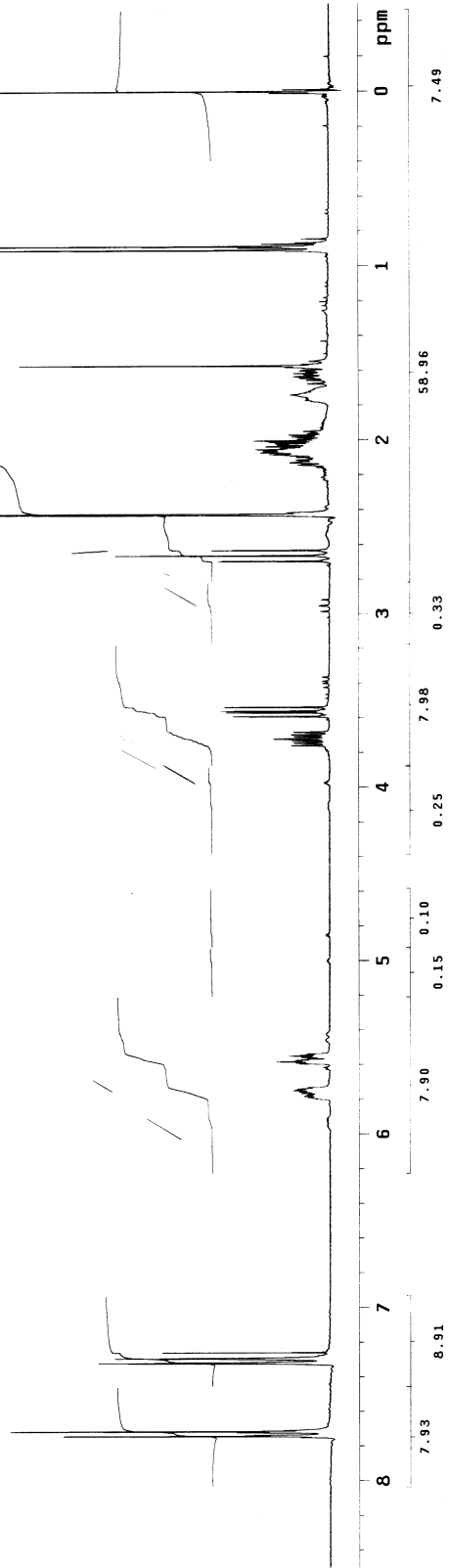


mjub100proton
STANDARD_1H OBSERVE

Pulse Sequence: szpul
Date: Oct 6 2000
Solvent: CDCl3
Temp: 30.0 C / 303.1 K
Sample #: 23
File: 302
Mercury-300 "nmr-300"
PULSE_SEQUENCE
Relax delay 1.000 sec
Pulse 45.0 degrees
Acq. time 5.461 sec
Width 6000.0 Hz
8 repetitions
OBSERVE H1, 300.0575954 MHz
DATA PROCESSING
F1 size 65536
Total time 1 minute



2a

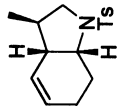


mjob100carbon
13C OBSERVE

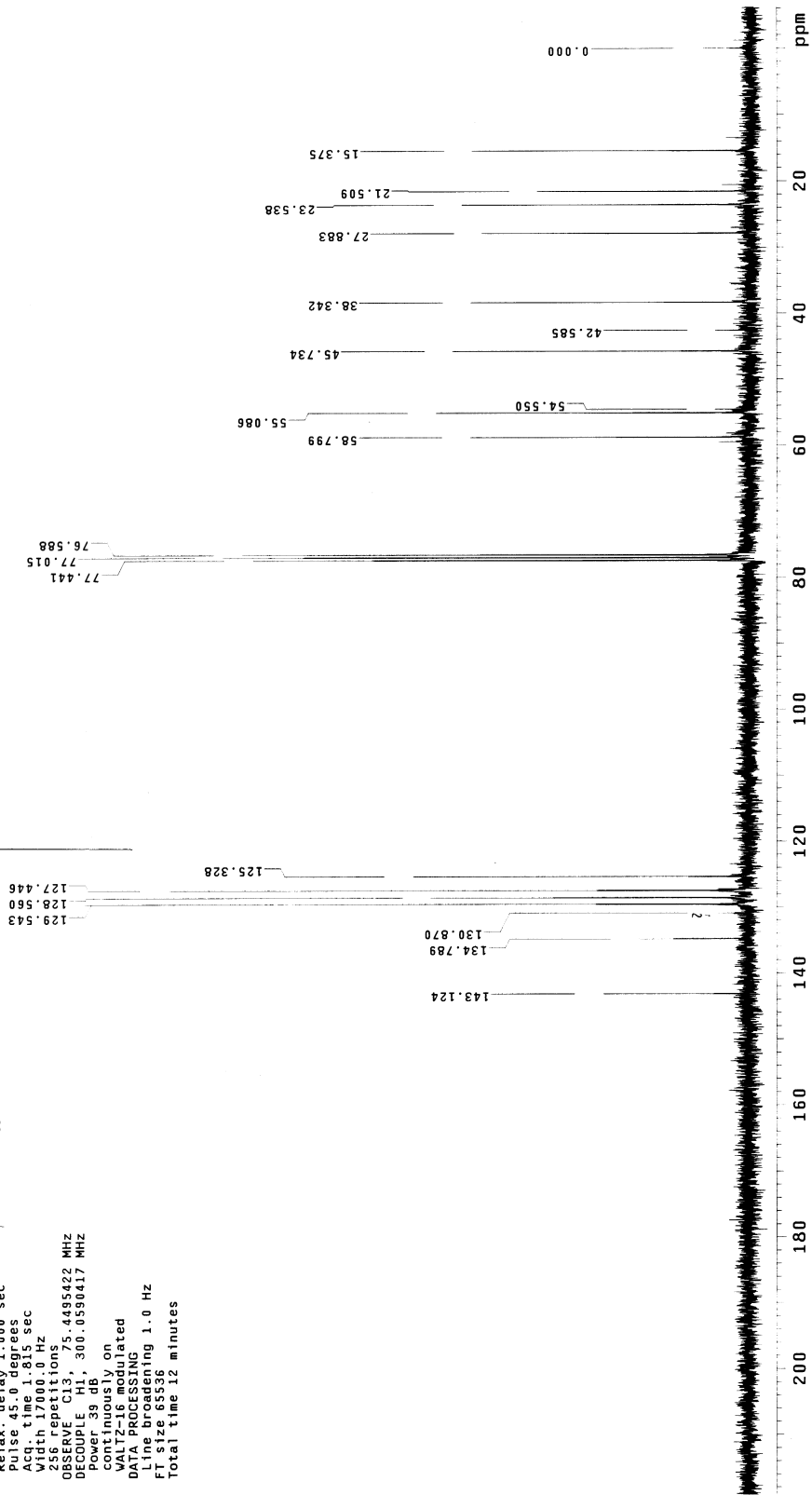
Pulse Sequence: s2pul
Date: Oct 10, 2000
Solvent: cdcl3
Temp: 30.0 C / 303.1 K
Sample: #34
File: 3401
Mercury-300 "nmr300"

PULSE SEQUENCE
Relax: delay 1.000 sec
Pulse 45.0 degrees
Acq. time 1.815 sec
Width 17000.0 Hz
256 repetitions

OBSERVE: C13, 75.4495422 MHz
DECOUPLE: H1, 300.0590417 MHz
Power: 30.0 dB, on
Modulation: on
VALTZ-16 modulated
DATA PROCESSING
Line broadening 1.0 Hz
FT size 65536
Total time 12 minutes

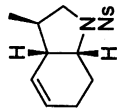


2a

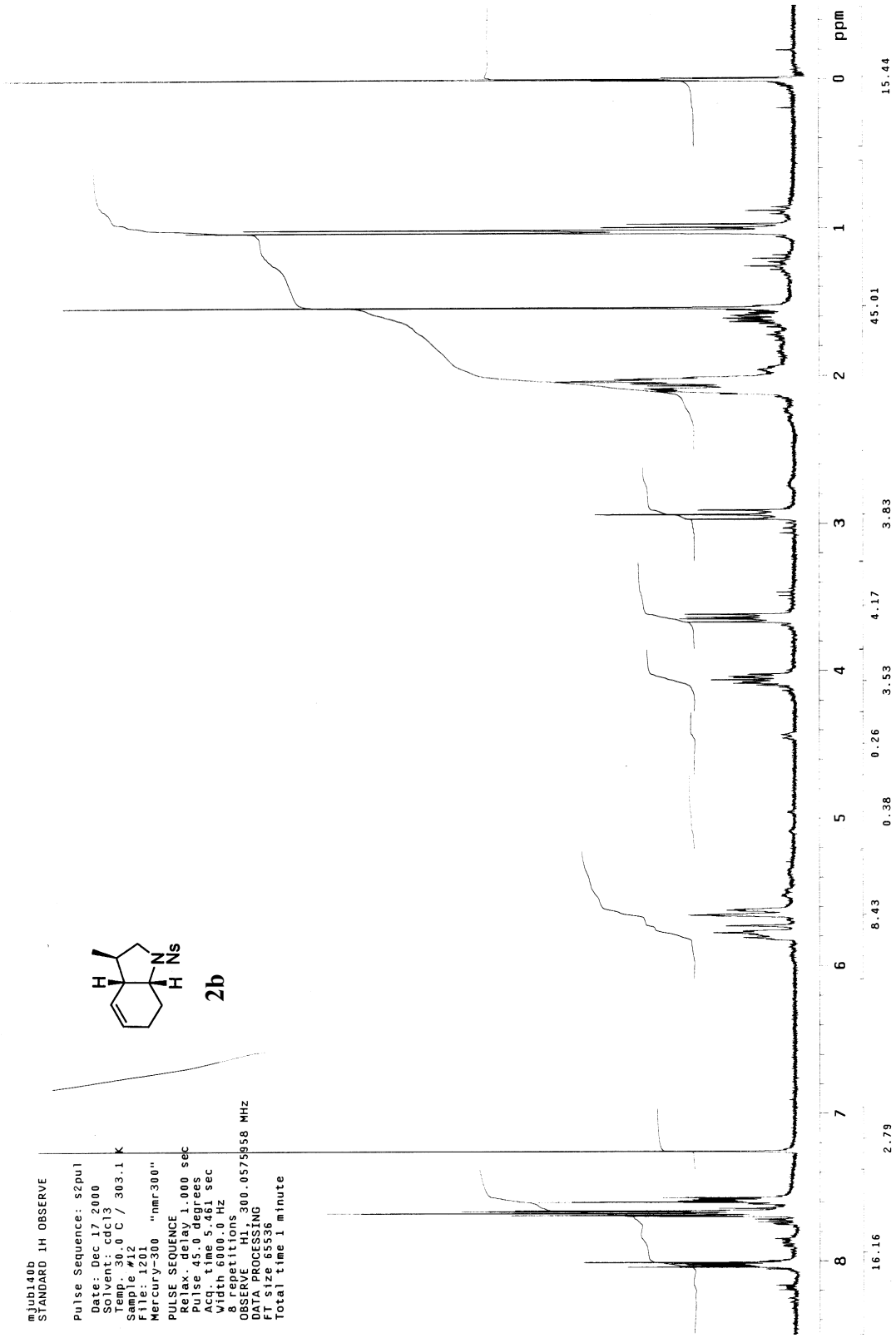


mju0140b
STANDARD 1H OBSERVE

Pulse Sequence: s2pul
Date: Dec 17 2000
Solvent: cdcl3
Temp: 30.0 C / 303.1 K
Sample #12
File: 1201
Mercury-300 "nmr300"
PULSE SEQUENCE
Relax. delay 1.000 sec
Pulse 45.0 degrees
Acq. time 5.461 sec
Width 6000.0 Hz
8 repetitions
OBSERVE H1, 300.0575958 MHz
DATA PROCESSING
F1 size 16536
Total time 1 minute



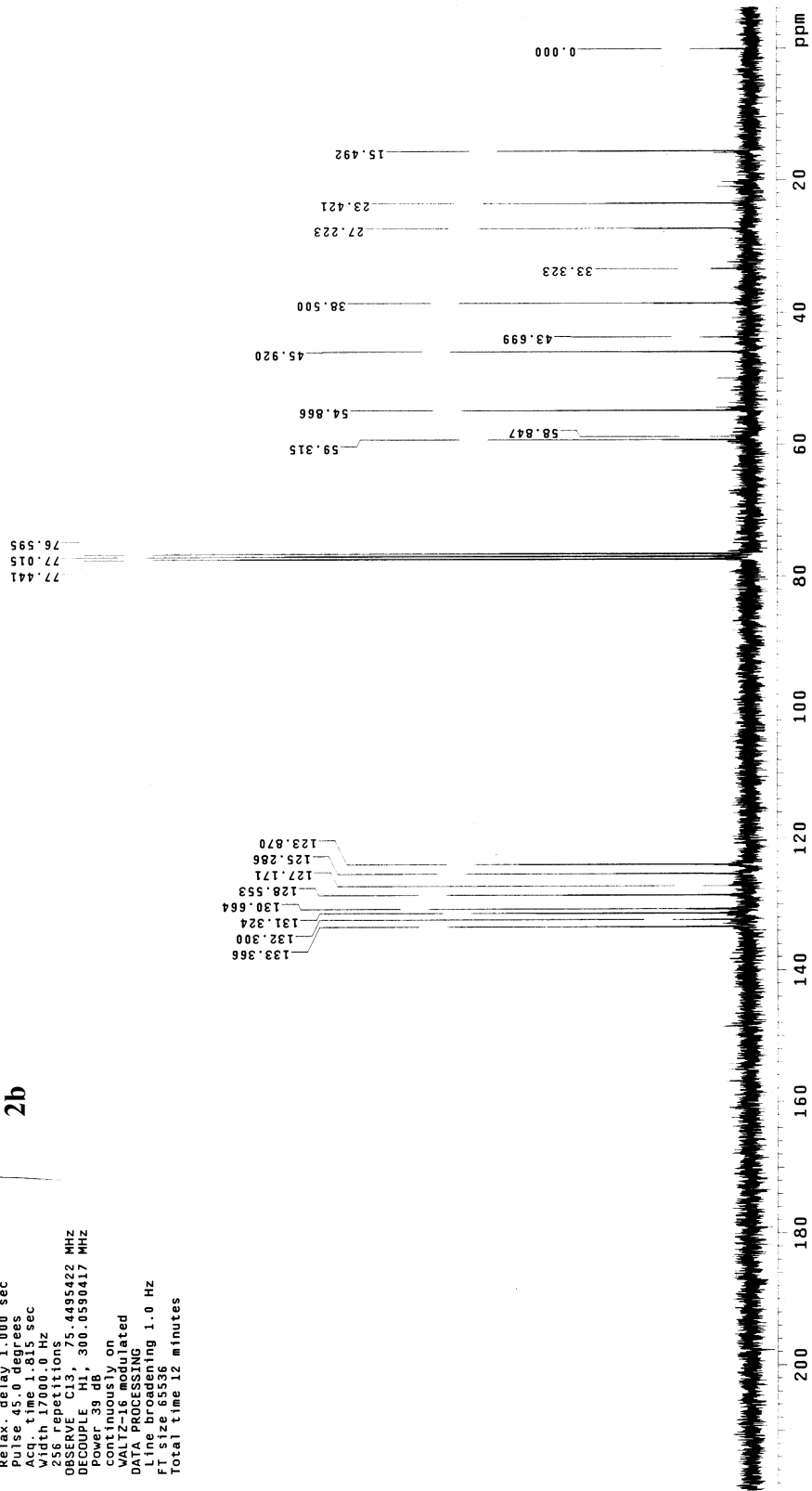
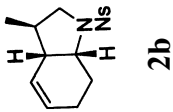
2b



njob140c13
13C OBSERVE

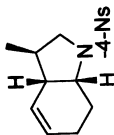
Pulse Sequence: s2pul
Date: Jan 3 2001
Solvent: cdCl3
Temp: 30.0 C / 303.1 K
Sample #2
File: 203
Mercury-300 "nmr300"

PULSE SEQUENCE
Relax: delay 1.000 sec
Pulse 45.0 degrees
Acq. time 1.815 sec
Width 17000.0 Hz
256 repetitions
OBSERVE C13, 75.4495422 MHz
DECOUPLE H1, 300.0590417 MHz
Power 33.0 dB
C13 channel on
WALT-16 modulated
DATA PROCESSING
Line broadening 1.0 Hz
FT size 65536
Total time 12 minutes

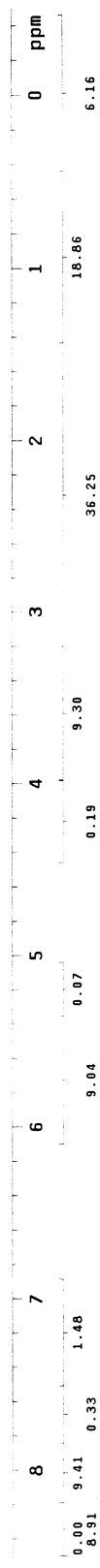


mjb167firstcrystalization
STANDARD 1H OBSERVE

Pulse Sequence: s2pu1
Date: Feb 16 2001
Solvent: cdcl3
Temp. 30.0 C / 303.1 K
Sample #32
File: 3201
Mercury-300 "nmr300"
PULSE SEQUENCE
Relax. delay 1.000 sec
Pulse 45.0 degrees
Acq. time 5.461 sec
Width 6000.0 Hz
8 repetitions
OBSERVE HL, 300.0575947 MHz
DATA PROCESSING
File: 3201
Total time 1 minute

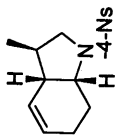


2C

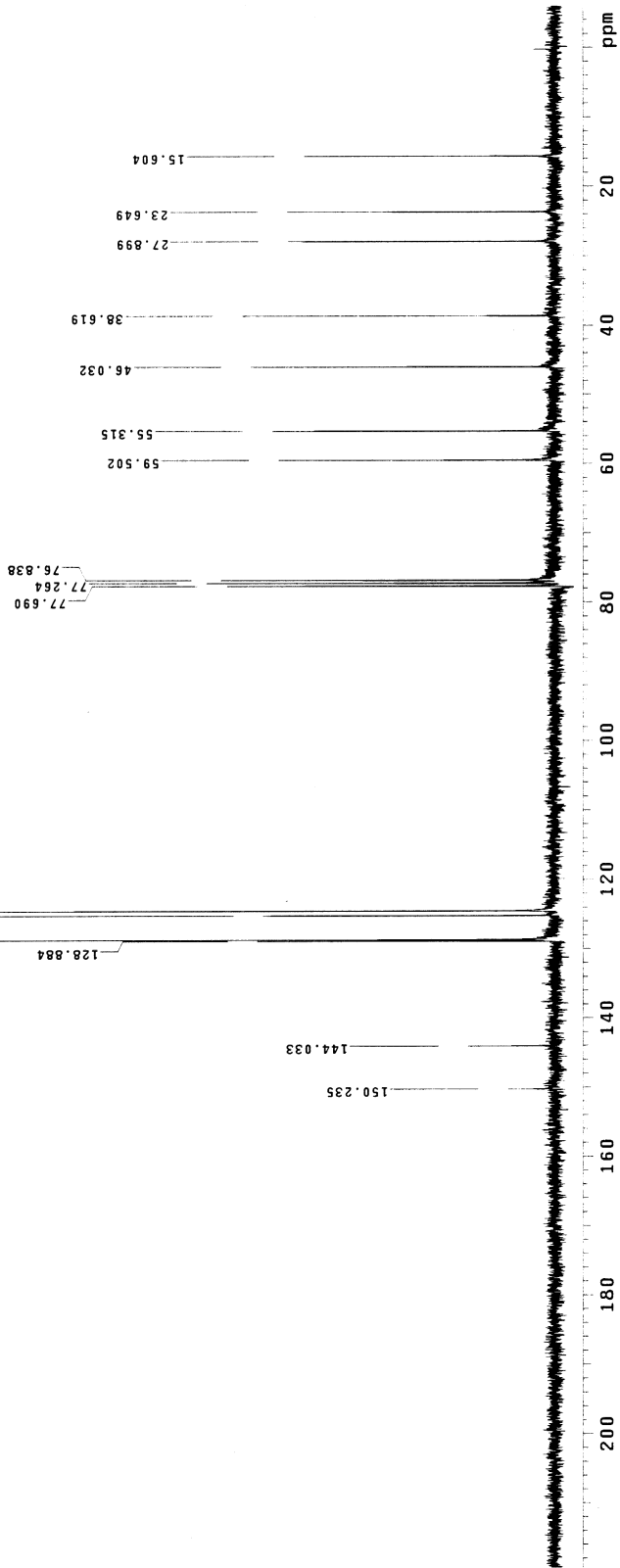


mjb167firtcryst
13C OBSERVE

Pulse Sequence: s2pu1
Date: Feb 16 2001
Solvent: cdcl3
Temp. 30.0 C / 303.1 K
Sample #1
File: 101
Mercury-300 "nmr300"
PULSE SEQUENCE
Relax. delay 1.000 sec
Pulse 45.0 degrees
Acq. time 1.815 sec
Width 17000.0 Hz
256 repetitions
OBSERVE C13, 75.4495244 MHz
PULSE PR, 300.0590417 MHz
Pulse 39 dB
continuously on
VOLTZ-16 modulated
DATA PROCESSING
Line broadening 1.0 Hz
FT size 65536
Total time 12 minutes



2c



mj ub122
STANDARD 1H OBSERVE

Pulse Sequence: s2pu1

Date: Jul 14 2001

Solvent: CDCl3

Temp: 30.0 C / 303.1 K

Sample #16

File: 1601

Mercury-300BB "nmr300"

PULSE SEQUENCE

Pulse delay: 1.000 sec

Pulse: 45.0 degrees

Acq. time: 5.461 sec

Width: 6000.0 Hz

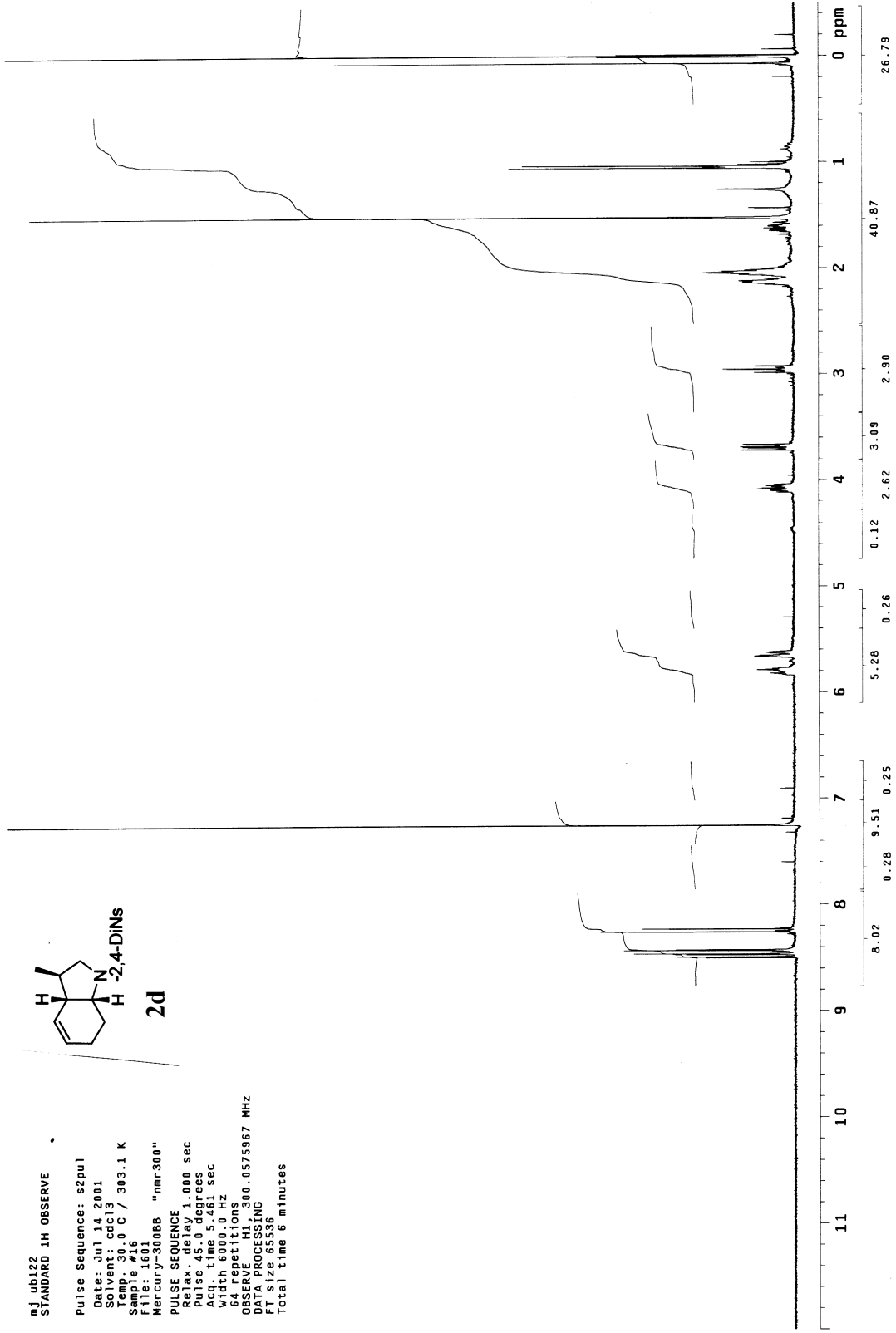
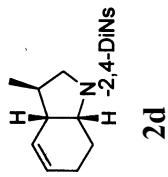
64 repetitions

OBSERVE: H1, 300.0575867 MHz

DATA PROCESSING

FT size: 65536

Total time: 6 minutes



mj ub122
13C OBSERVE

Pulse Sequence: s2pu1

Date: Jul 14 2001

Solvent: cdcl3

Temp: 30.0 C / 303.1 K

Sample: #16

File: 1602

Mercury-3000B "nmr300"

PULSE SEQUENCE

Relax delay 1.000 sec

Pulse: 45.0 degrees

Acq: time 1.815 sec

Width 17000.0 Hz

10000 repetitions

OBSERVE C13, 75.4485422 MHz

DECOUPLE H1, 300.0590417 MHz

Power 39 dB

continuously on

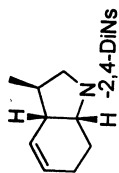
100% AMPLITUDE

DATA PROCESSING

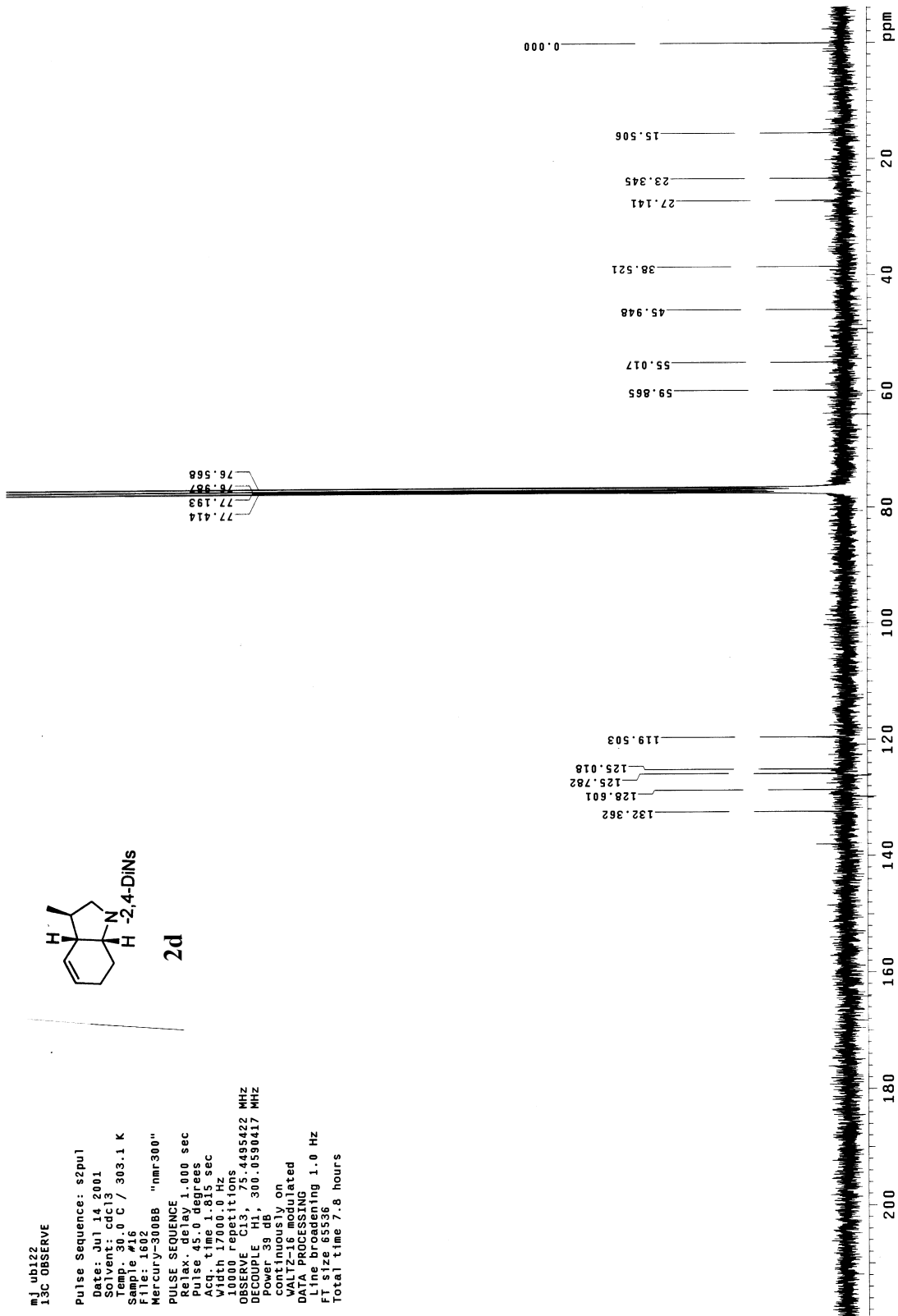
Line broadening 1.0 Hz

FT size 65536

Total time 7.8 hours



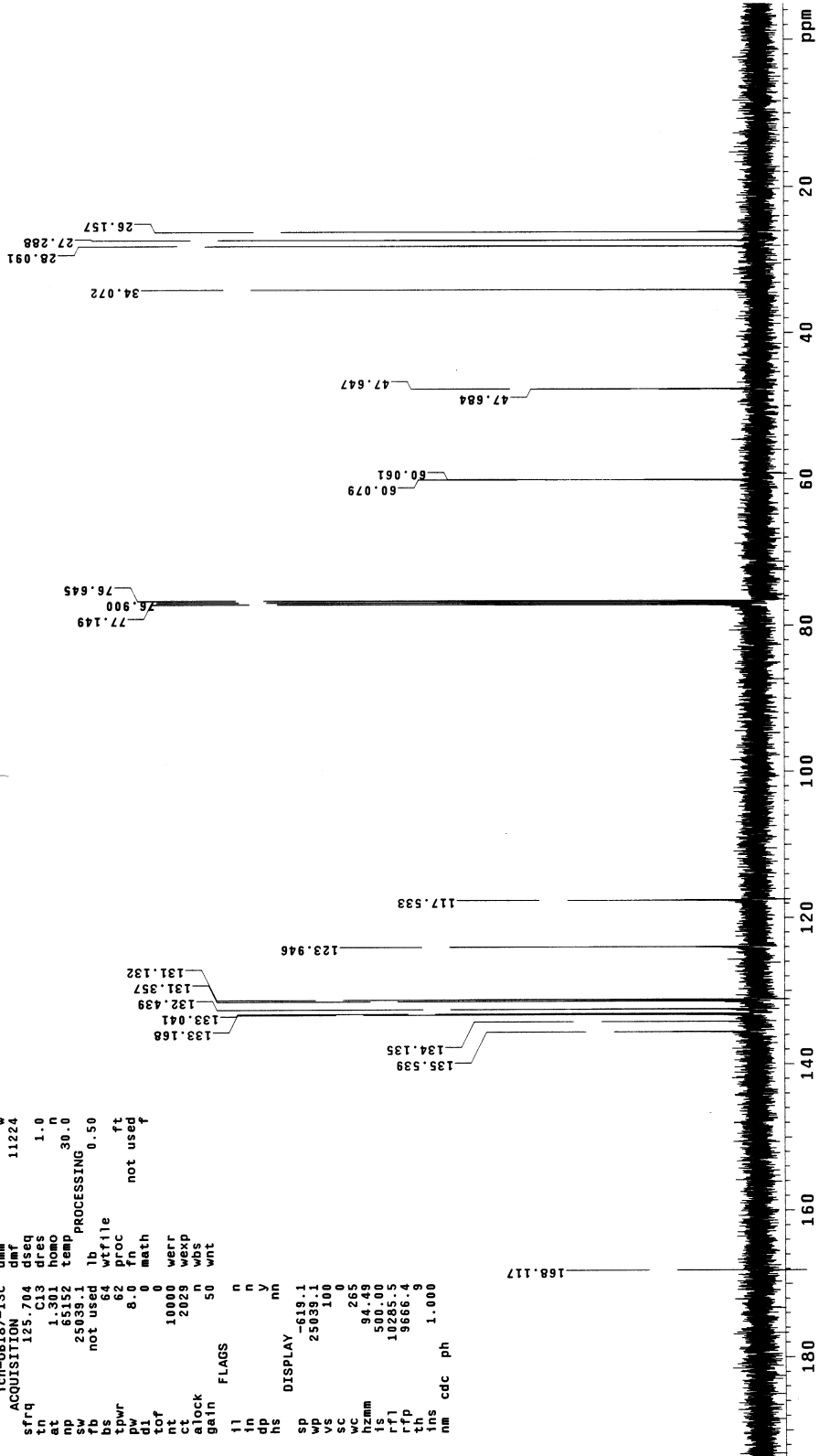
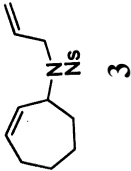
2d



STANDARD CARBE

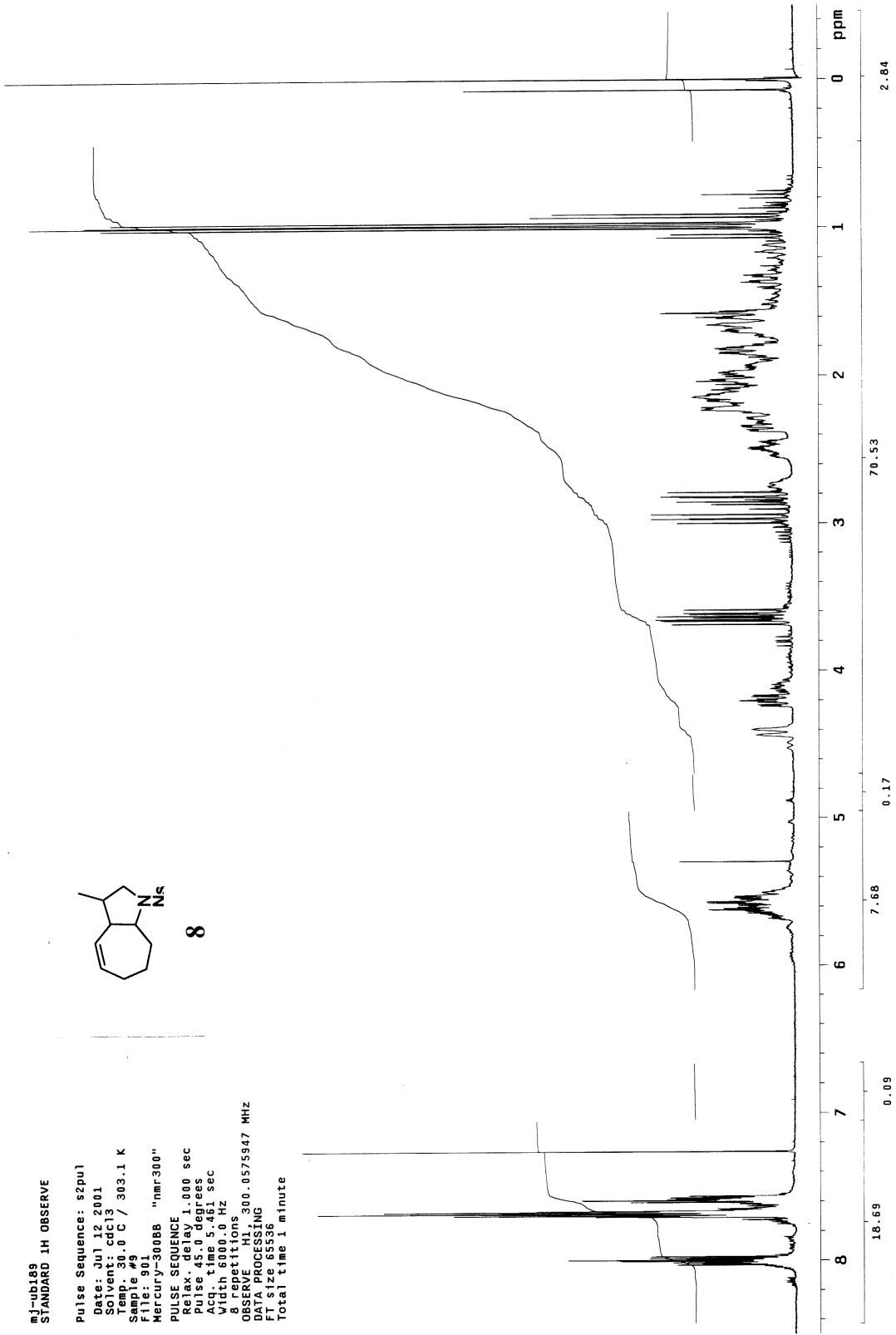
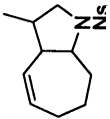
```

exp3 s2pul
SAMPLE Mar 26 2001 -DEC. & VT 499.870
date Mar 26 2001 dfrq H1
solvent CDC13 dn 32
file/export/home/~ dpr 0
jvite/vmrsys/data~ dof 0
jvite-26-3-01-ulr~ dm vvv
ich-UB187-13c dnm 11224
ACQUISITION dmf
sfrq 125.704 dseq
tn 1.03 dres 1.0
at 5612 temp 30.0
sv 25039.1 temp PROCESSING 0.50
fb not used lb wifile
bs 64 wifile
tpwr 62 proc ft
pw 8.0 fn not used f
di 0 math
nt 1000 werr
clock 207.8 wisp
gain 50 wnt
FLAGS n n
ll n
in n
dp n
hs nn
SP DISPLAY -619.1
wf 25039.1
vc 100
sc 0
WC 265
hzmm 94.49
fs 500.00
rf1 10285.5
rfp 9666.4
th 9
nms cdc 1.000
nm cdc ph
  
```



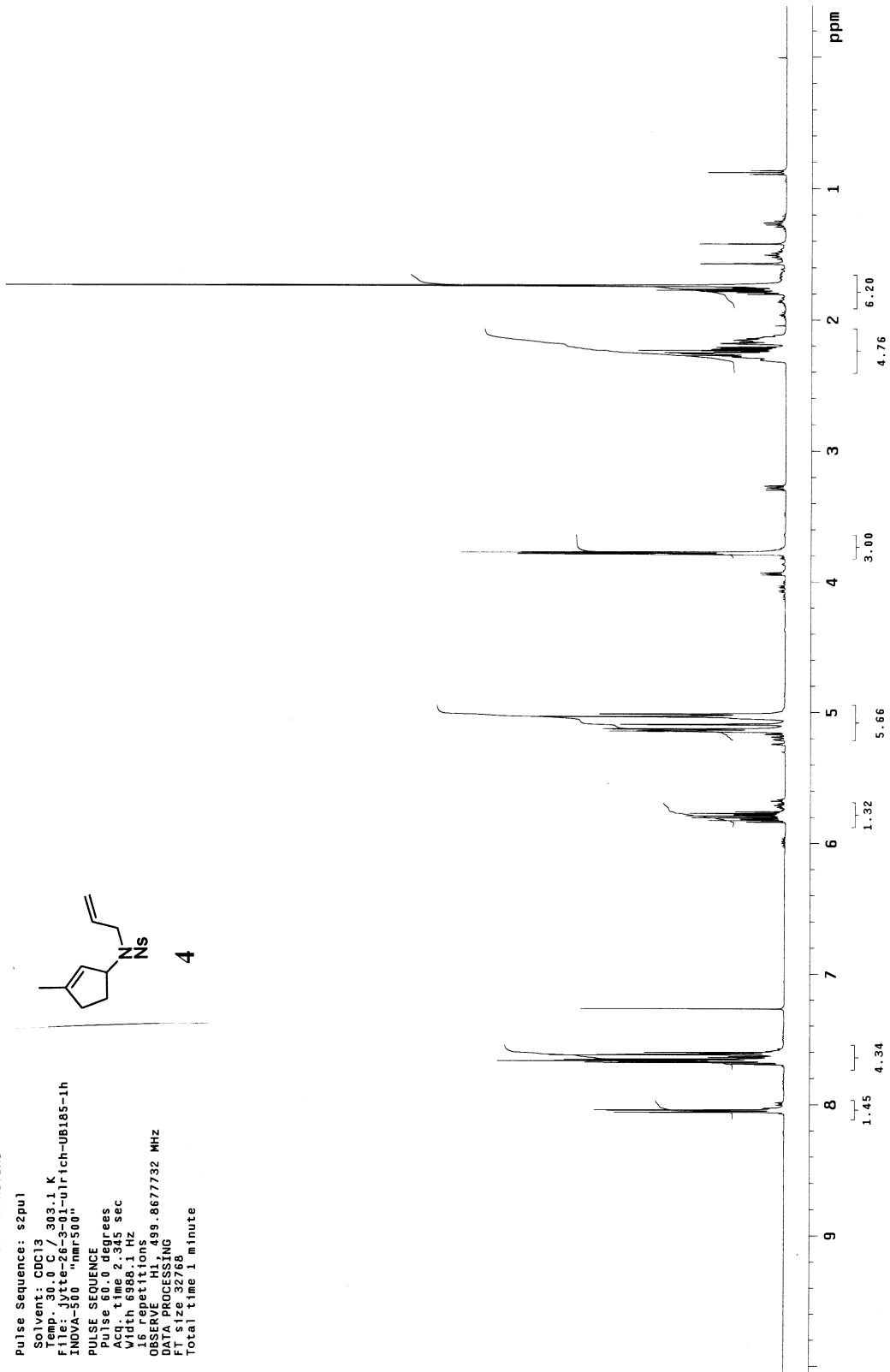
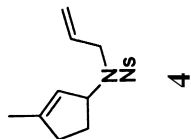
nj-ubi89
STANDARD 1H OBSERVE

Pulse Sequence: s2pul
Date: Jul 12 2001
Solvent: CDCl3
Temp: 30.0 C / 303.1 K
Sample #9
File: 901
Mercury-300BB "nmr300"
PULSE SEQUENCE
Relax delay 1.000 sec
Pulse 45.0 degrees
Acq. time 5.461 sec
Width 6000.0 Hz
8 repetitions
OBSERVE H1, 300.0575947 MHz
DATA PROCESSING
F1 size 65536
Total time 1 minute



STANDARD PROTON PARAMETERS

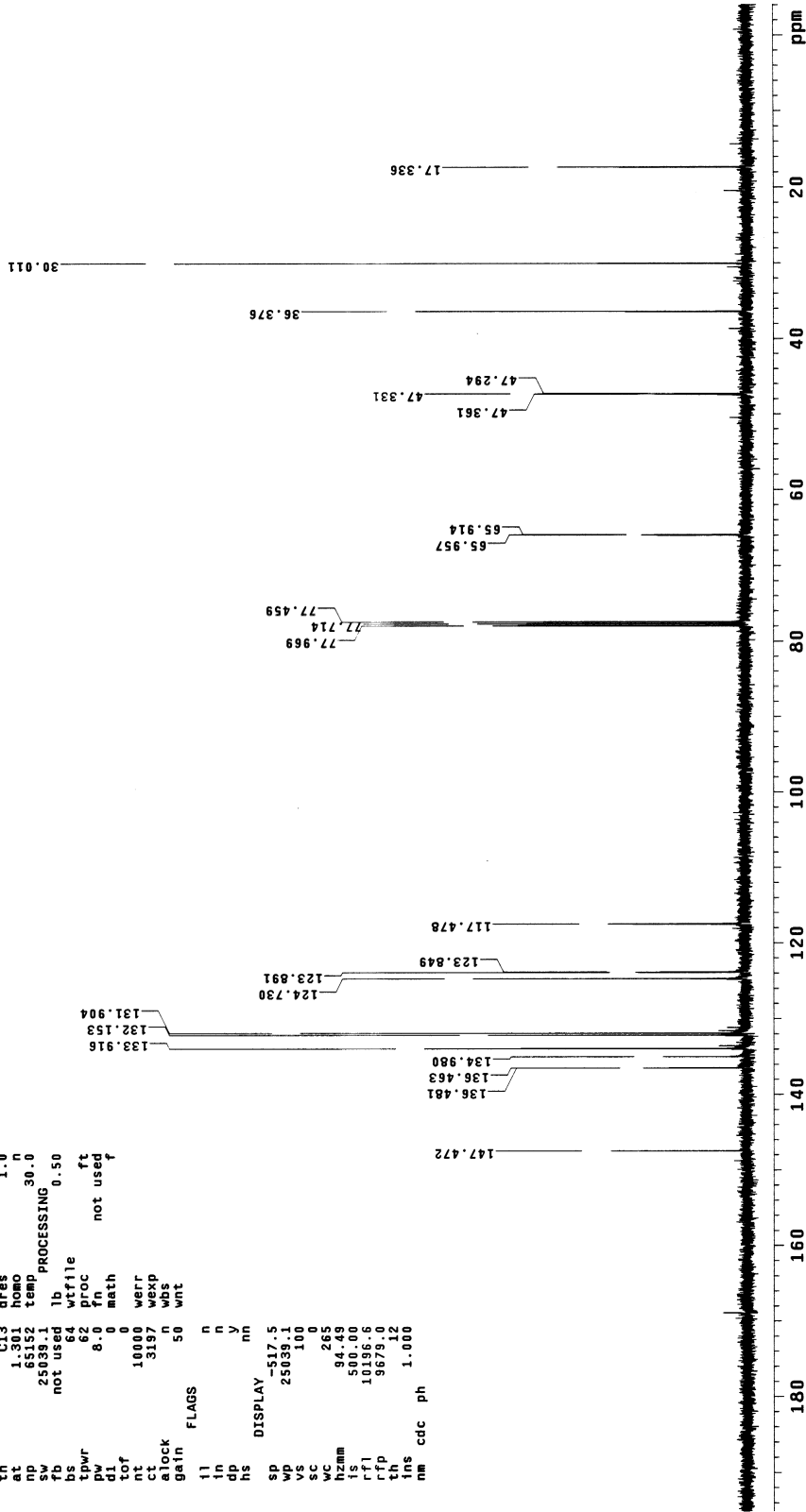
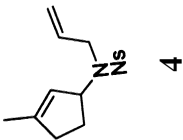
Pulse Sequence: s2pu1
Solvent: CDCl3
Temp: 30.0 C / 303.1 K
File: jyte-zs-01-Dirich-UBI85-1h
INDVA 300 "nmr300"
PULSE SEQUENCE
Pulse 60.0 degrees
Acq. time 2.345 sec
Waltz 16 repeats
OBSERVE H1 499.867732 MHZ
DATA PROCESSING
FT size 32768
Total time 1 minute



STANDARD CARBON PARAMETERS

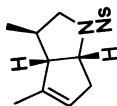
```

exp3 s2pu1
SAMPLE Mar 26 2001 dfrq DEC. & VT
solvent CDC13 dn 499.870 H1
file /export/home/~ dpwr 32
jyite/vmr/sys/data~ dof 0
/jyite-26-3-01-uir~ dm yyy
ICH-08185-13C dnm 11224 W
ACQUISITION 704
sfreq 125.764 dnr
tn 125.764 dres
et 1.301 homo 1.0
nd 65152 temp 30.0
sw 25039.1 temp PROCESSING
fb not used lb 0.50
bs 64 wtfile
tpwr 62 proc not used
di 8.0 fn
cf 10000 werr
ct 3197 wexp
alock n wbs
gain 50 wnt
FLAGS
ll n
in n
dp y
ns DISPLAY nm
sp -517.5
wp 25039.1
vs 100
sc 0
wc 265
hzmm 94.49
ls 500.00
rfi 10196.6
rfp 9679.0
tms 1.000
nm cdc ph
  
```

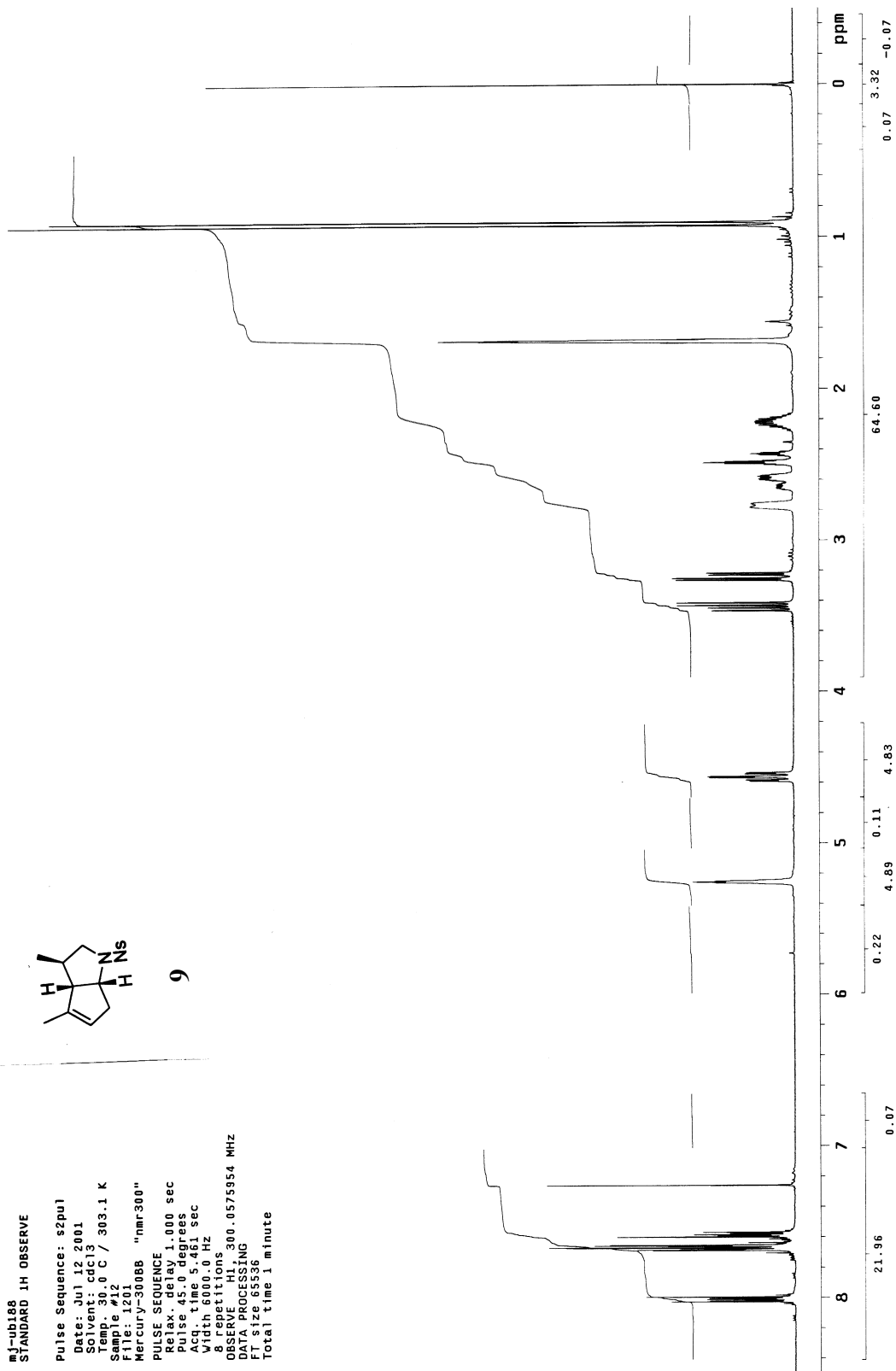


#J-ubi88
STANDARD 1H OBSERVE

Pulse Sequence: s2pu1
Date: Jul 12, 2001
Ver: 4.13
Temp: 30.0 C / 303.1 K
Sample: #12
File: 1201
Mercury-30088 "nmr300"
PULSE SEQUENCE
Relax delay 1.000 sec
Pulse 45.0 degrees
Acq. time 5.461 sec
Width 6000.0 Hz
8 repetitions
OBSERVE H1, 300.0575954 MHz
DATA PROCESSING
FI size 65536
Total time 1 minute



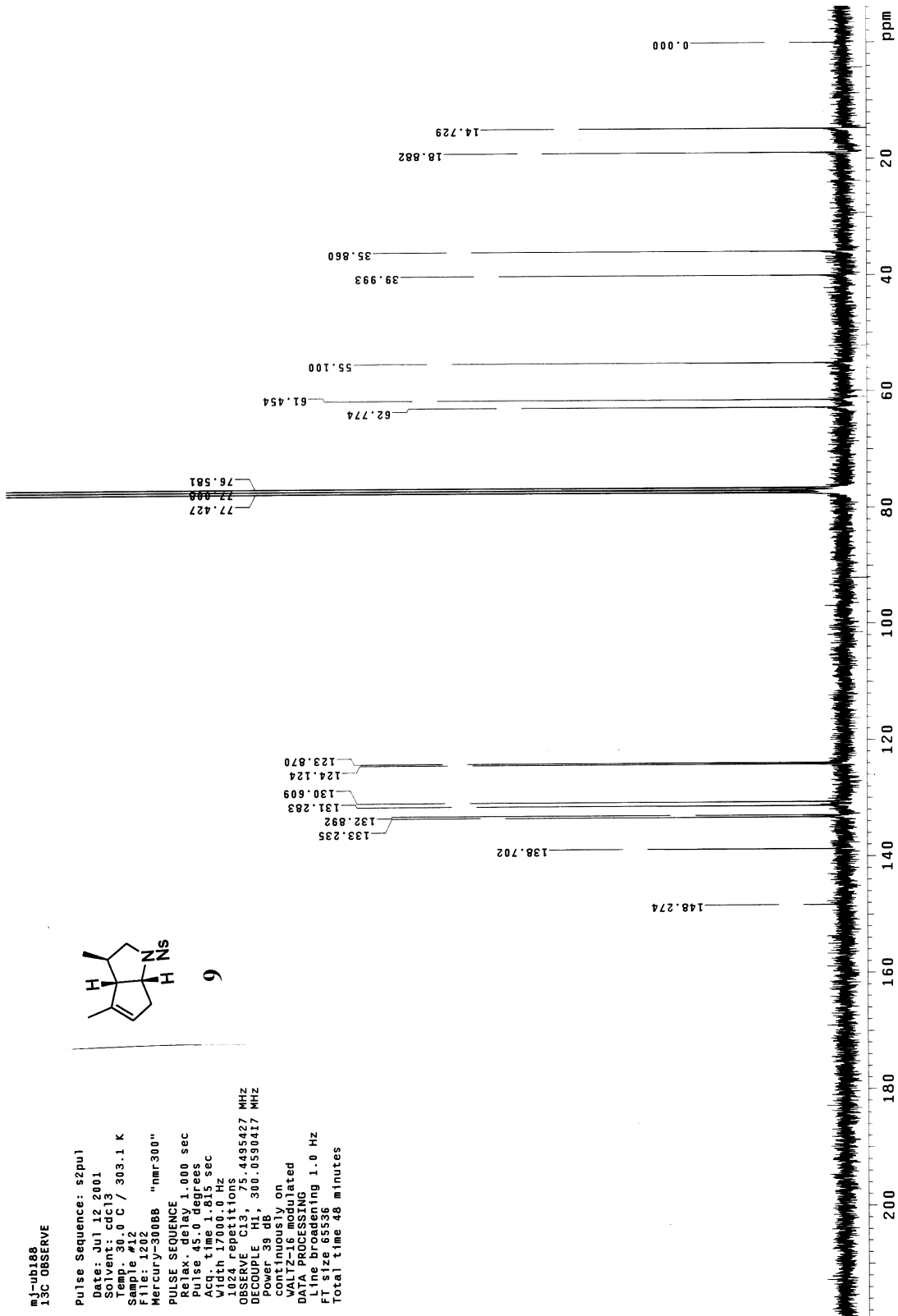
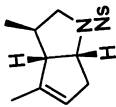
9



mj-ub188
13C OBSERVE

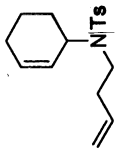
Pulse Sequence: s2pul

Date: Jul 12, 2001
Solvent: cdcl3
Temp: 30.0 C / 303.1 K
Sample #12
File: 1202
Mercury-300088 "nmr300"
PULSE SEQUENCE
P1: 12.000 sec
Pulse delay: 1.000 sec
Pulse: 45.0 degrees
Acq. time: 1.815 sec
Width: 17000.0 Hz
1024 repetitions
OBSERVE C13, 75.4495427 MHz
DECOUPLE H1, 300.0590417 MHz
Power: 39 dB
continuously on
transmitted
DATA PROCESSING
Line broadening: 1.0 Hz
FT size: 65536
Total time: 48 minutes

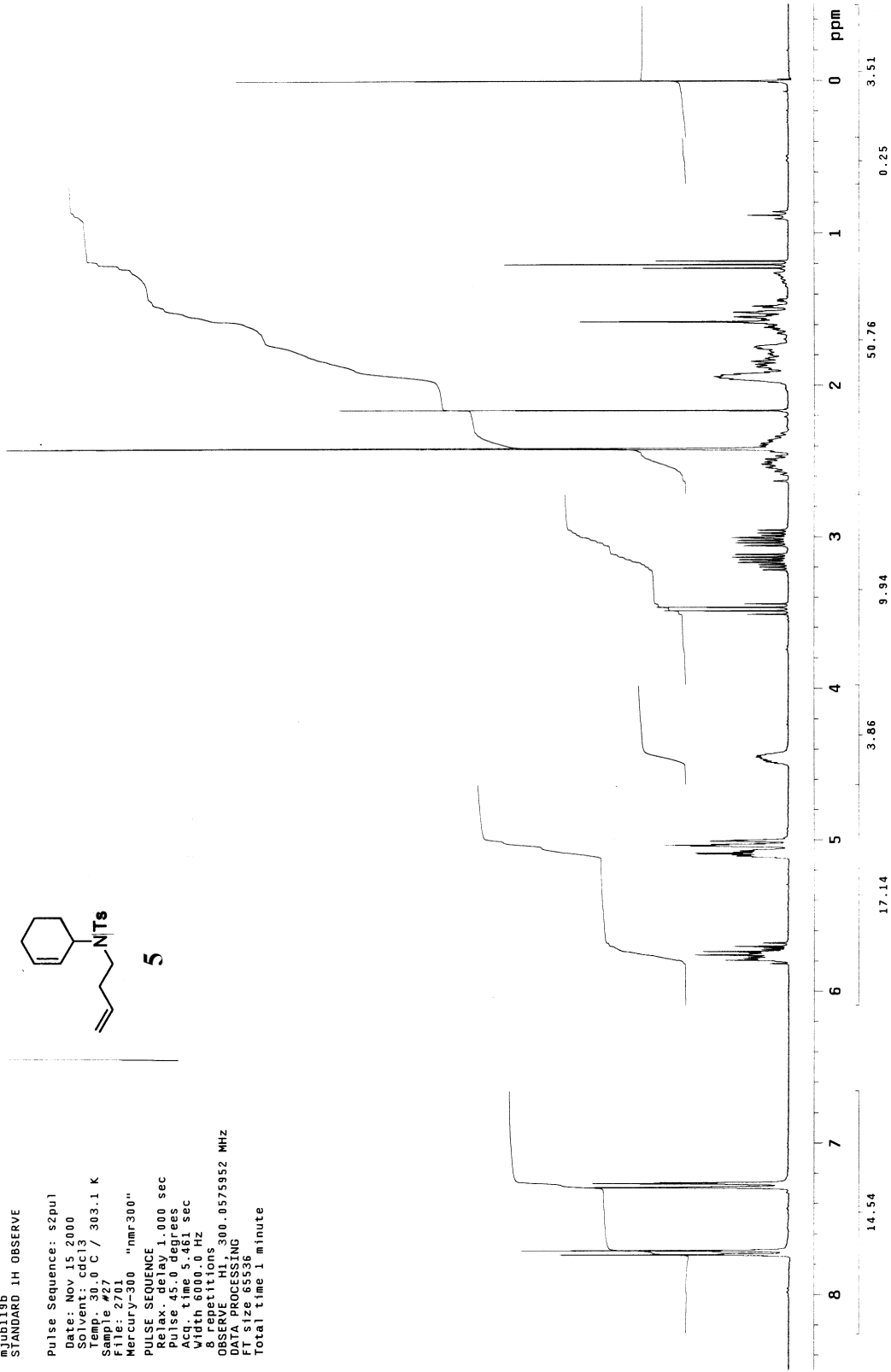


mjb0119b
STANDARD 1H OBSERVE

Pulse Sequence: s2pu1
Date: Nov 15 2000
Solvent: cdcl3
Temp: 30.0 C / 303.1 K
Sample #27
File: 2701
Mercury-300 "nmr300"
PULSE SEQUENCE
Relax. delay 1.000 sec
Pulse 45.0 degrees
Acq. time 5.461 sec
Width 6000.0 Hz
8 repetitions
OBSERVE: h1, 300.0575952 MHz
DATA PROCESSING
F2: 126536
Total time 1 minute



5



mjub19bcarbon
13C OBSERVE

Pulse Sequence: s2pul

Date: Nov 16 2000

Solvent: CDCl3

Temp: 30.0 C / 303.1 K

Sample #: 5

File: 501

Mercury-300 "nmr-300"

PULSE SEQUENCE

DELTA 1.000 sec

Pulse 45.0 degrees

Acq. time 1.815 sec

Width 17000.0 Hz

256 repetitions

OBSERVE C13, 75.4495244 MHz

DECOUPLE H1, 300.0590417 MHz

Power 39 dB

continuously on

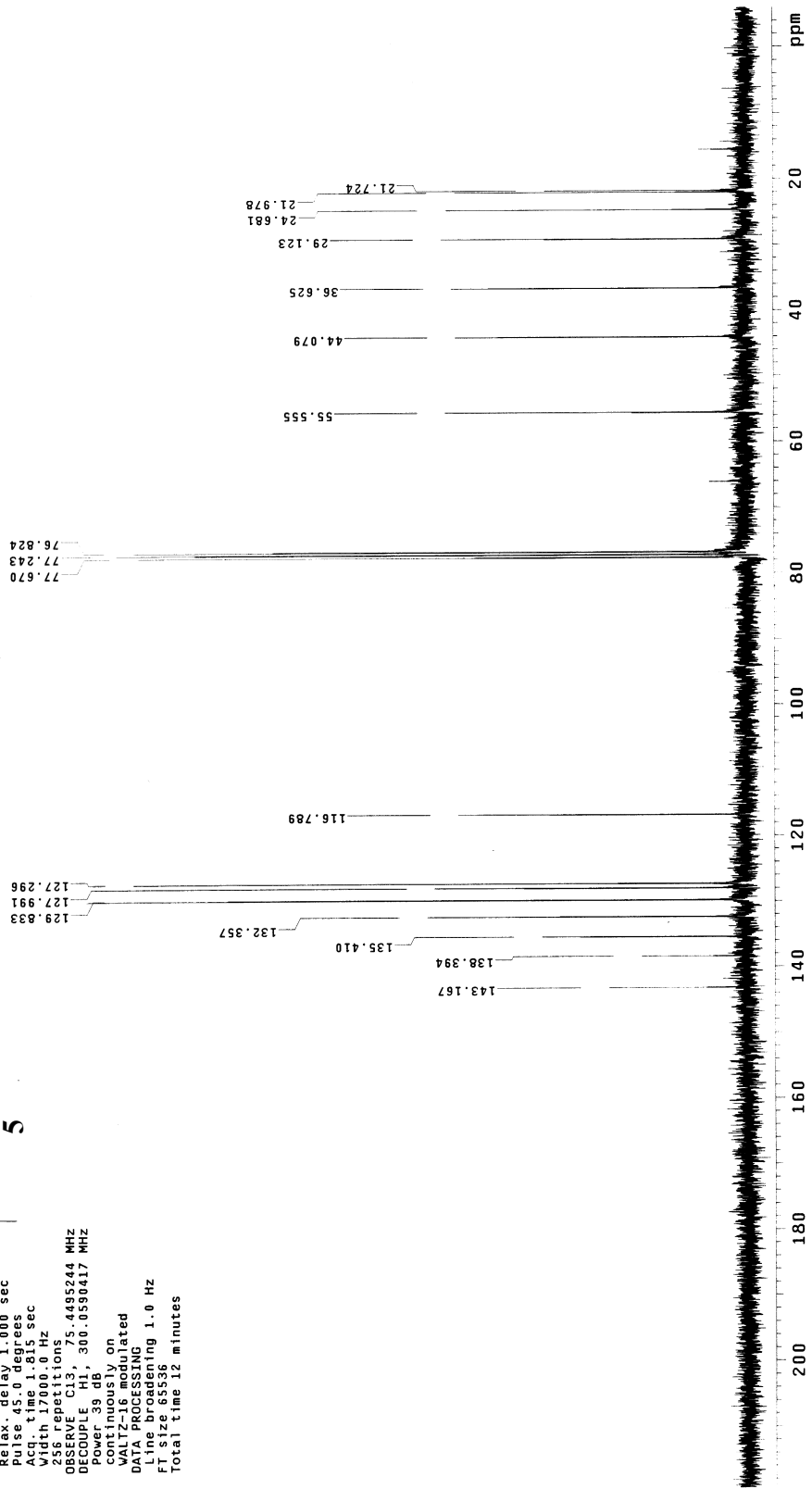
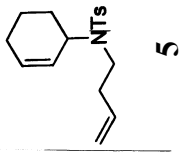
transmitted

DATA PROCESSING

Line broadening 1.0 Hz

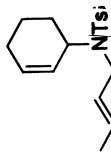
FT size 65536

Total time 12 minutes

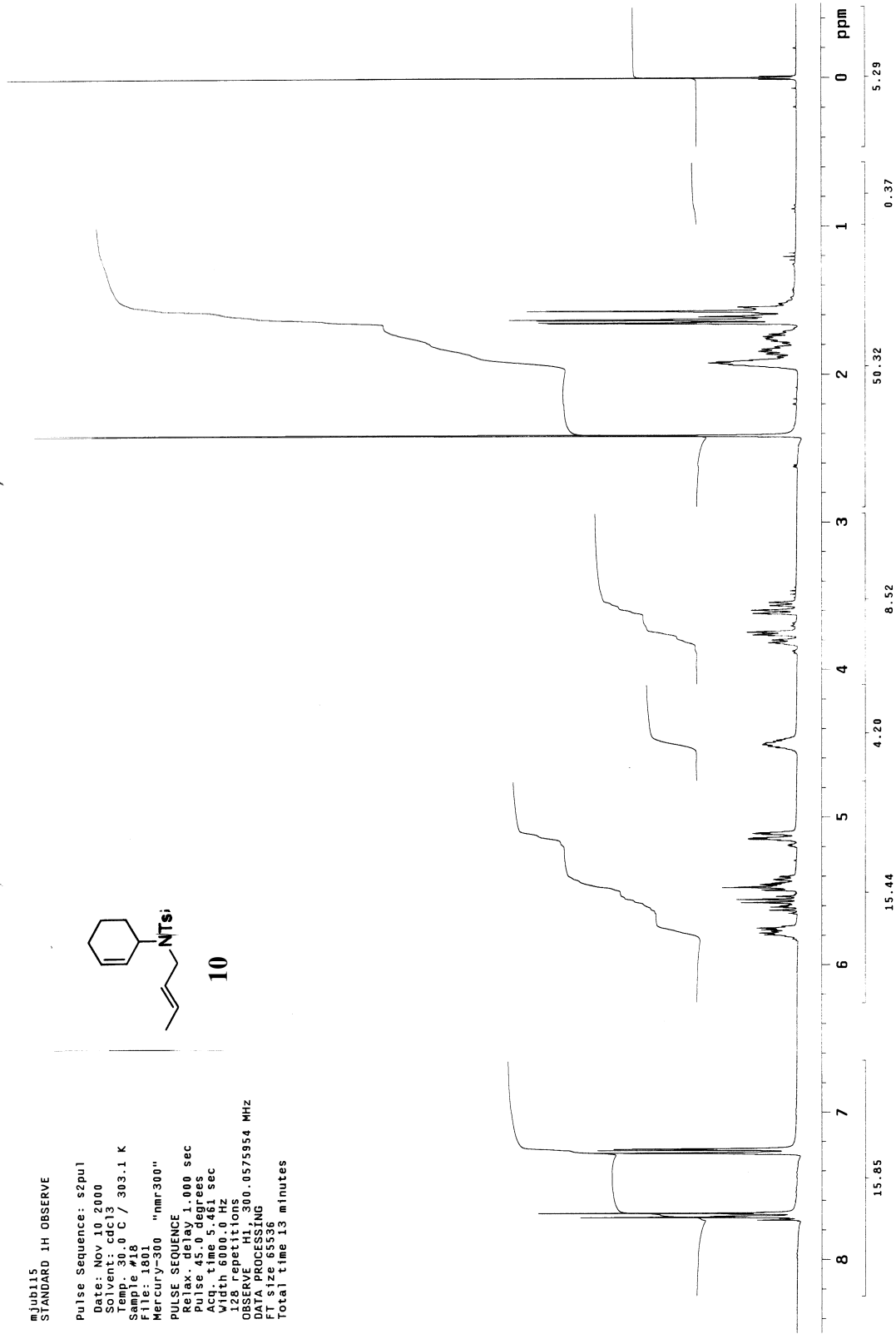


11JUB115
STANDARD 1H OBSERVE

Pulse Sequence: s2pu1
Date: Nov 10 2000
Solvent: cdcl3
Temp: 30.0 C / 303.1 K
Sample #18
File: 1801
Mercury-300 "nmr300"
PULSE SEQUENCE
Relax. delay 1.000 sec
Pulse 45.0 degrees
Acq. time 5.461 sec
Width 6000.0 Hz
128 repetitions
OBSERVE H1, 300.0575954 MHz
DATA PROCESSING
File size 68532
Total time 13 minutes



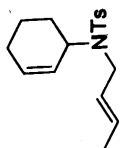
10



mjub115carbon
13C OBSERVE

Pulse Sequence: s2pul
Date: Nov 10 2000
Solvent: cdCl3
Temp: 30.0 C / 303.1 K
Sample #21
File: 2101
Mercury-300 "nmr300"

PULSE SEQUENCE
Relax. delay 1.000 sec
Pulse 45.0 degrees
Acq. time 1.815 sec
Width 17000.0 Hz
256 repetitions
OBSERVE C13, 75.4495244 MHz
DECOUPLE H1, 300.6590417 MHz
Contingency on
WAITZ-16 modulated
DATA PROCESSING
Line broadening 1.0 Hz
FT size 65536
Total time 12 minutes



10

