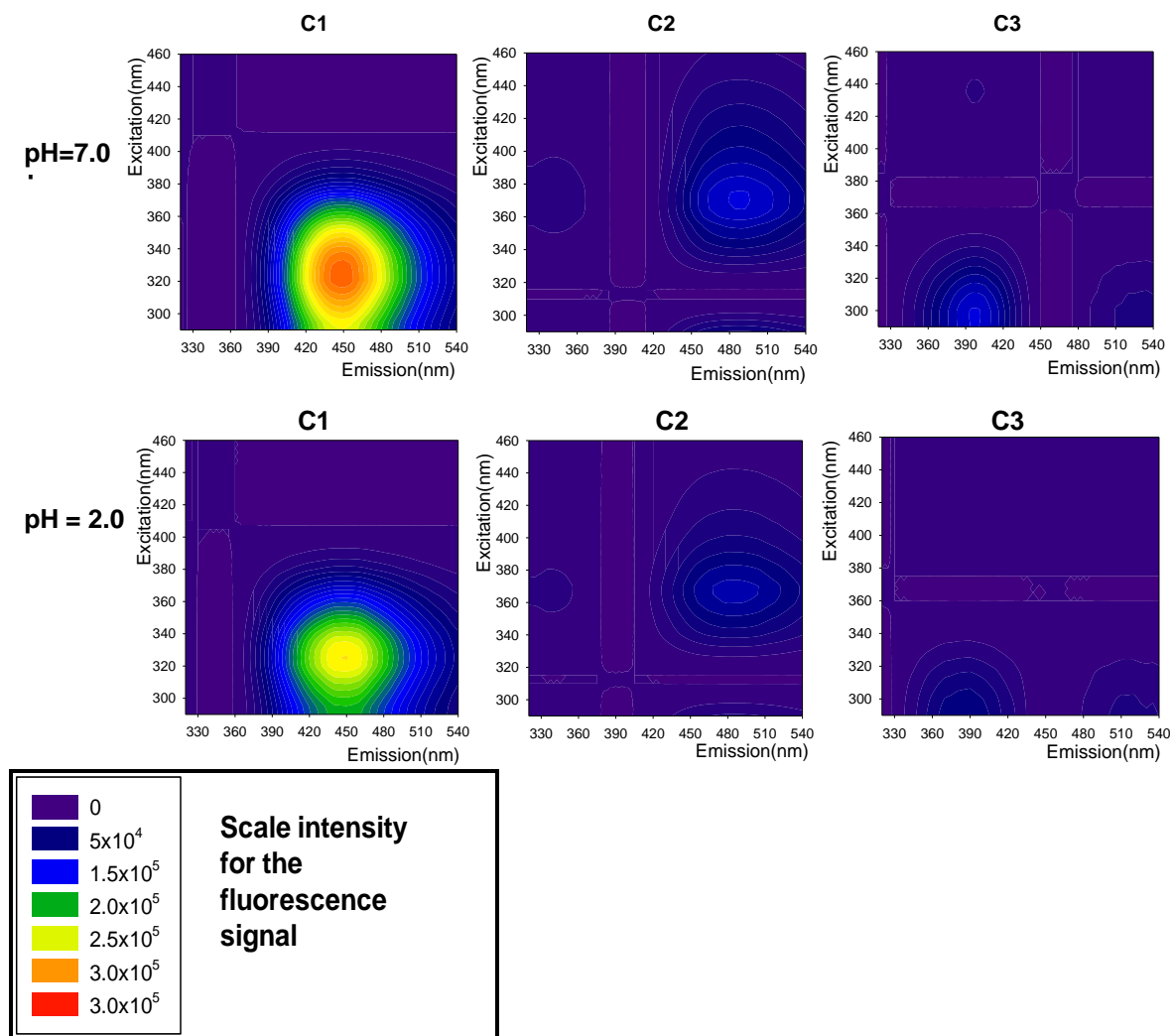
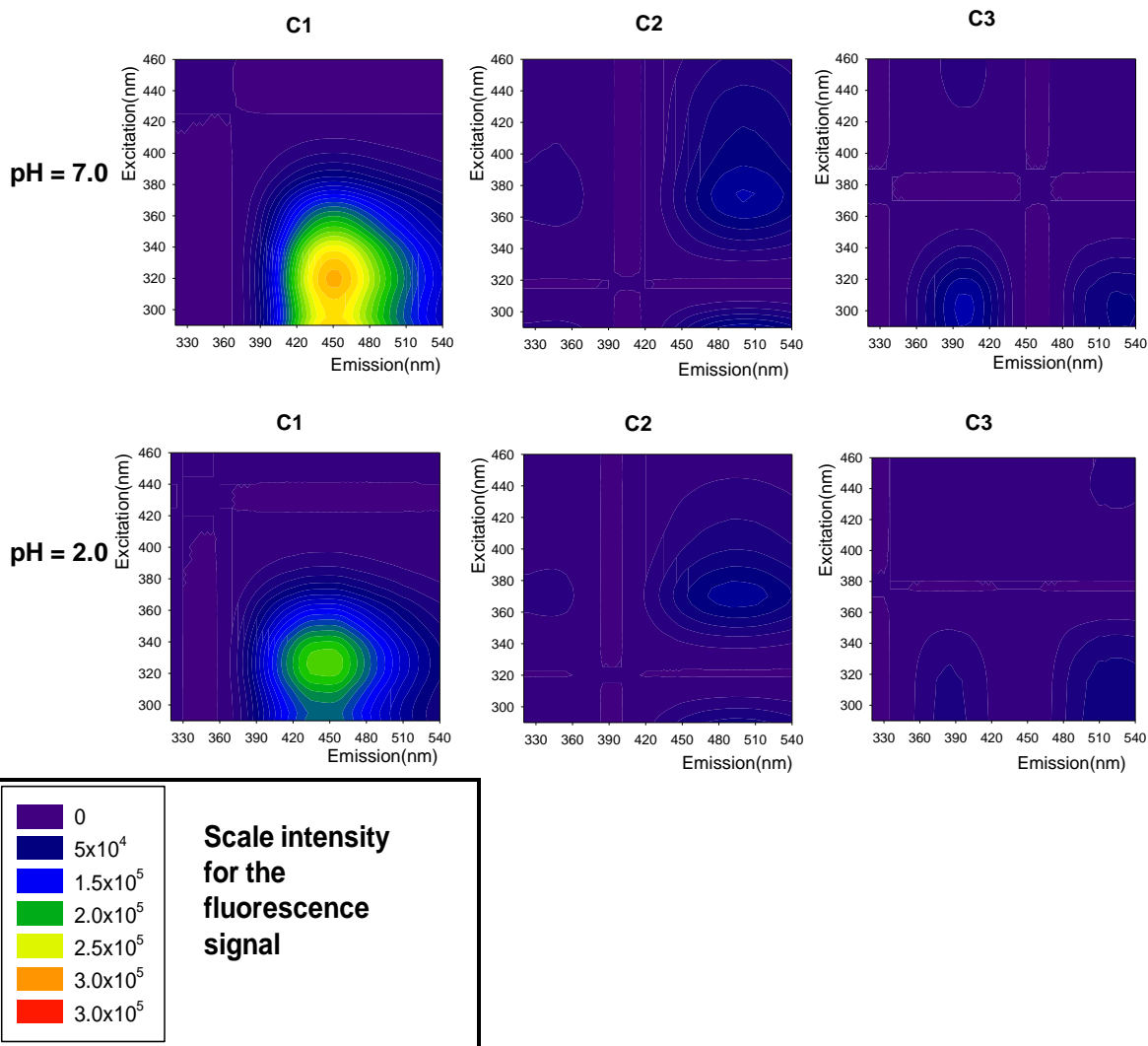


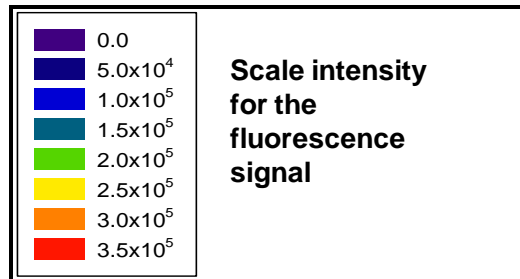
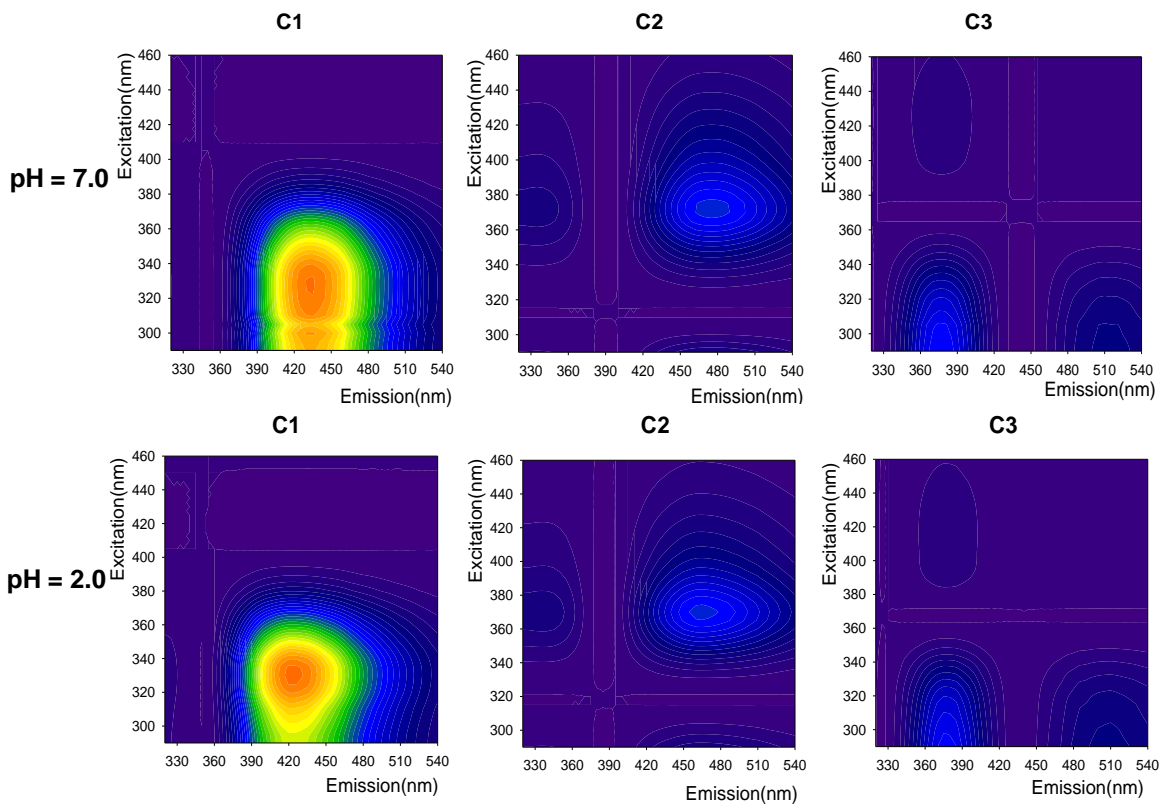
## Supplementary Information



**Figure S1.** Reproduced fluorescence excitation-emission matrices for the three components of  $10.0 \text{ mgL}^{-1}$  of Suwannee River fulvic acid without  $\text{Hg}^{2+}$ ; at pH = 7.0 and 2.0.



**Figure S2.** Reproduced fluorescence excitation-emission matrices, for the three components of a  $4.6 \text{ mgL}^{-1}$  solution of Pahokee Peat fulvic acid without  $\text{Hg}^{2+}$ ; at pH = 7.0 and 2.0.



**Figure S3.** Reproduced fluorescence excitation-emission matrices, for the three components of a  $14.0 \text{ mgL}^{-1}$  solution of Pony Lake fulvic acid without  $\text{Hg}^{2+}$ ; at pH = 7.0 and 2.0.