

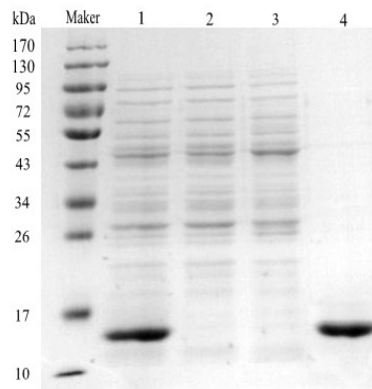
Supplementary information

**A tumor-targeting dextran-apoprotein conjugate integrated with enediyne  
chromophore shows highly potent antitumor efficacy**

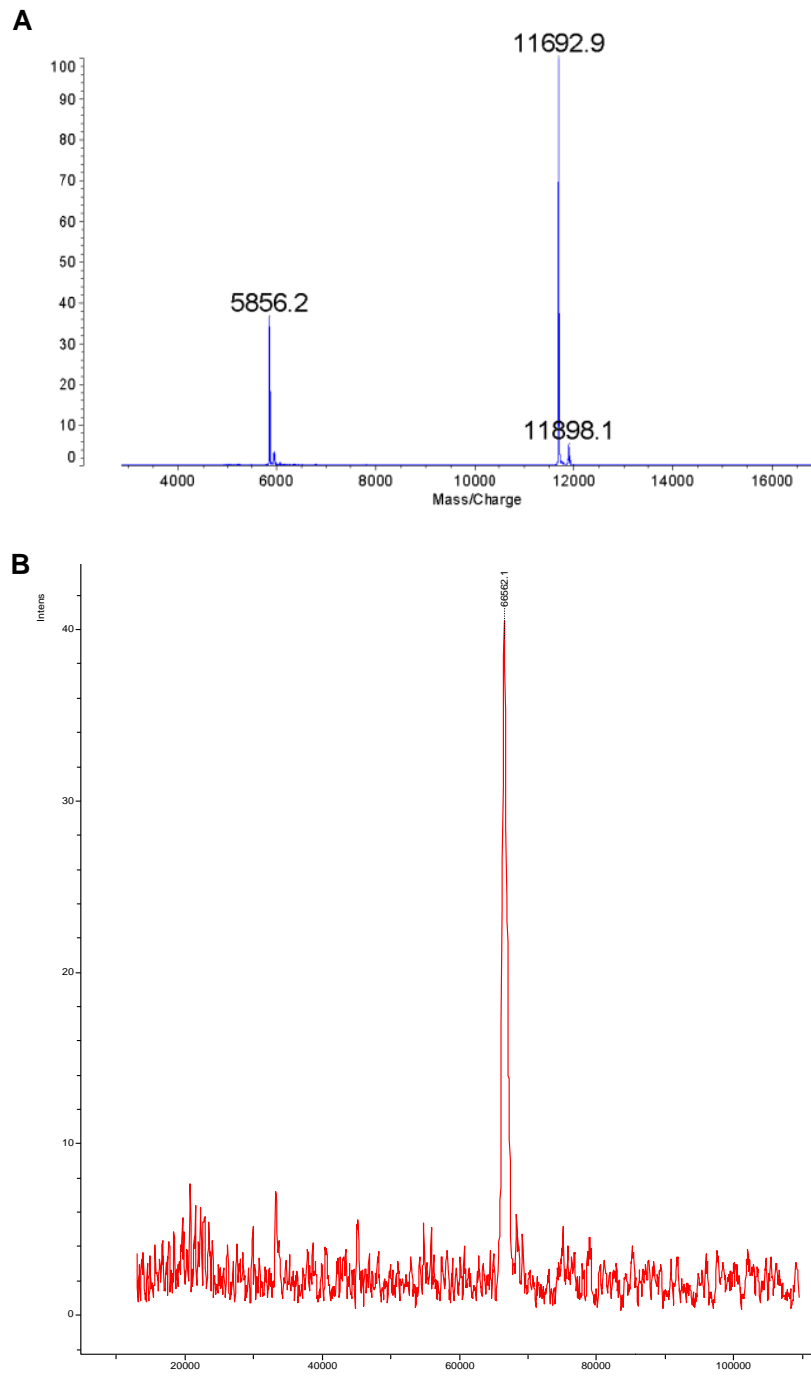
Bin Li, Xiu-jun Liu, Liang Li, Sheng-hua Zhang, Yi Li, Dian-dong Li and Yong-su Zhen\*

*Institute of Medicinal Biotechnology, Chinese Academy of Medical Sciences*

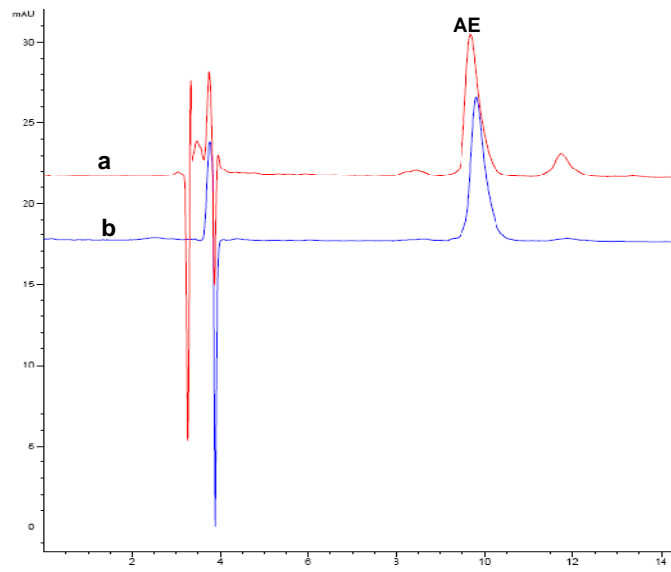
*and Peking Union Medical College, Beijing 100050, China.*



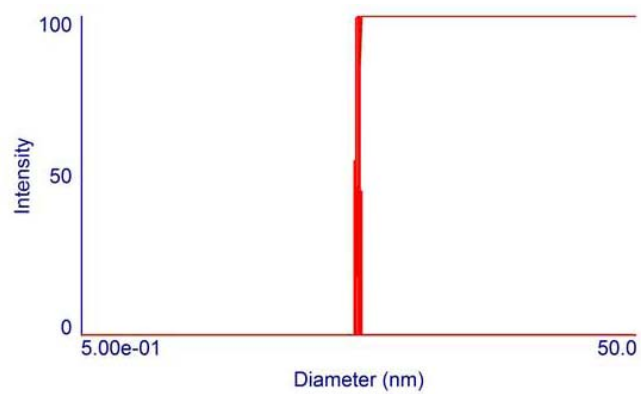
**Fig S1.** SDS-PAGE analysis of the purification process of recombinant apoprotein rLDP. Samples run on a reducing 15% gel and stained with Coomassie brilliant blue. Lane 1. Total periplasmic proteins; Lane 2. Proteins unbonded with Ni<sup>2+</sup> column; Lane 3. Proteins washed with washing buffer (including 20 mM imidazole); Lane 4. rLDP washed with elution buffer (including 250 mM imidazole).



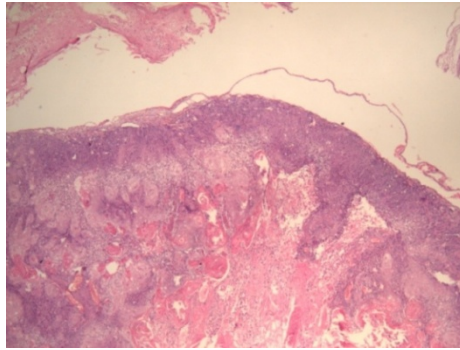
**Fig S2.** The MOLDI-TOF MS of rLDP (A) and Dex-rLDP (B).



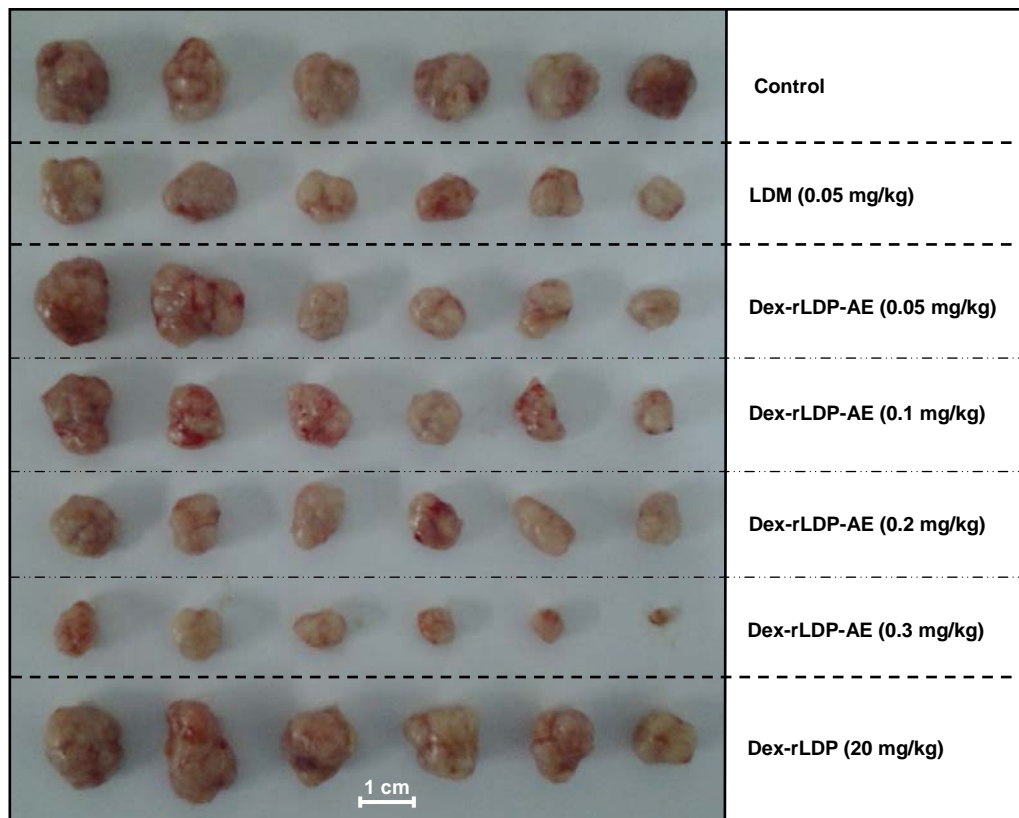
**Fig S3.** RP-HPLC profiles of Dex-rLDP-AE (a) and control LDM (b). HPLC analysis was performed on a Jupiter 300A C<sub>4</sub> column (4.6 mm × 250 mm, 5 μm particle size, henomenex, USA). The mobile phase composed of acetonitrile/water (78:22, v/v) with a flow rate of 1.0 ml/min. The selected detection wavelength was 350 nm since AE had a specific absorbance at around 350 nm.



**Fig S4.** The size distribution of rLDP.



**Fig S5.** Histological observation of the A431 tumor visualized with H&E staining ( $\times 100$ ). The internal pink areas represented keratinized and necrotic substance.



**Fig S6.** Excised tumors from lung carcinoma H460 xenograft-bearing mice.