

## Electronic Supplementary Information

### Tunable Charge Transfer Effect in Poly(spirobifluorene)s with Different Electron-Rich Side Chains

Xuchao Wang,<sup>a,b</sup> Lei Zhao,<sup>a,b</sup> Shiyang Shao,<sup>a</sup> Junqiao Ding,<sup>\*a</sup> Lixiang Wang,<sup>\*a</sup> Xiabin Jing,<sup>a</sup>  
and Fosong Wang<sup>a</sup>

<sup>a</sup> *State Key Laboratory of Polymer Physics and Chemistry, Changchun Institute of Applied  
Chemistry, Chinese Academy of Sciences, Changchun, 130022, P. R. China*

<sup>b</sup> *University of Chinese Academy of Sciences, Beijing, 100049, P. R. China*

Corresponding author E-mail: [junqiaod@ciac.ac.cn](mailto:junqiaod@ciac.ac.cn); [lixiang@ciac.ac.cn](mailto:lixiang@ciac.ac.cn)

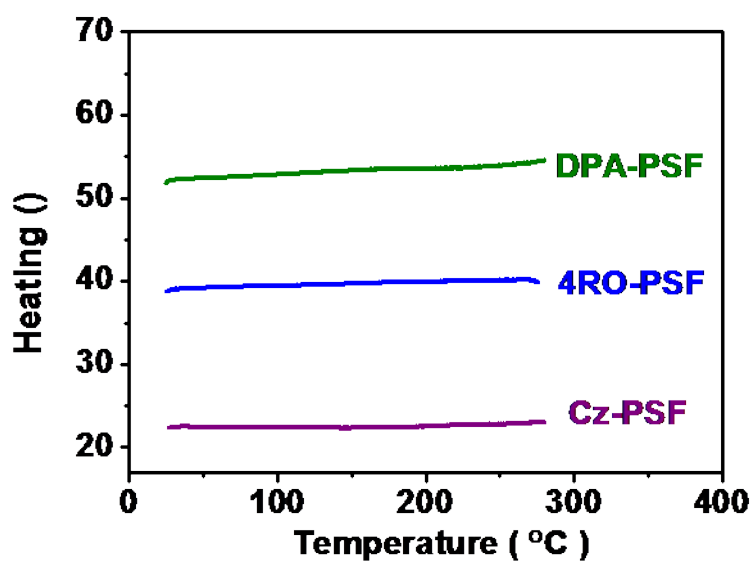


Figure S1. DSC curves of the polymers.

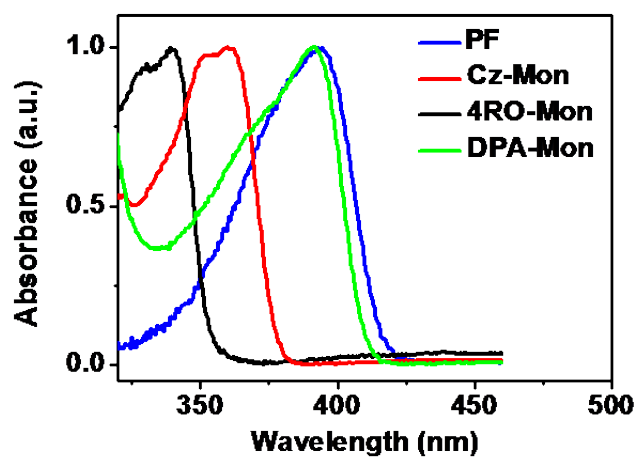
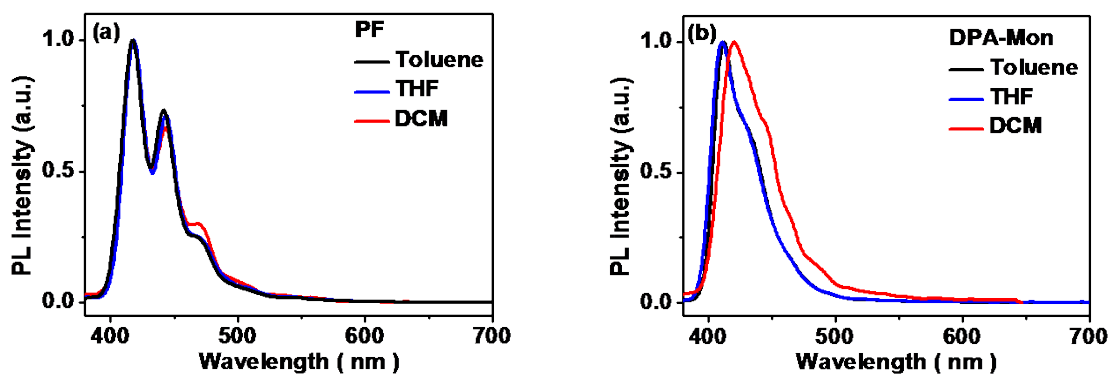
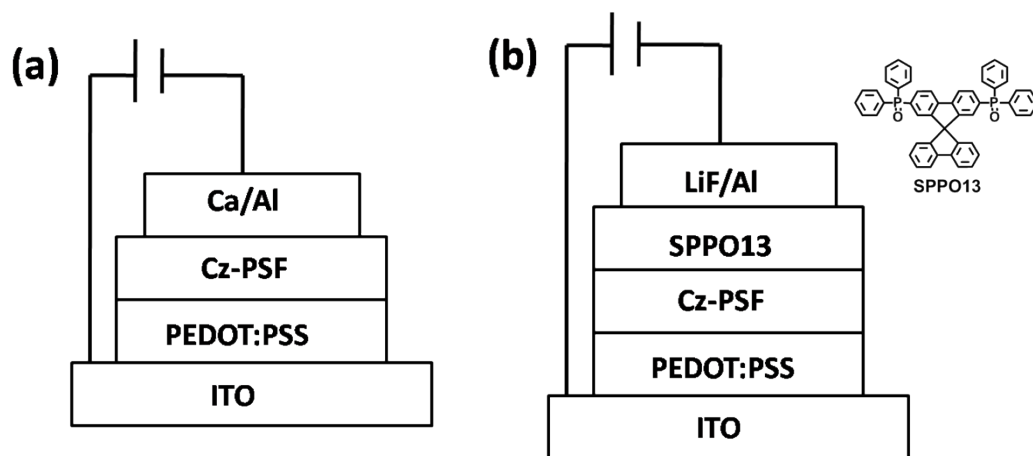


Figure S2. Absorption spectra of the monomers and PF in toluene solution.



**Figure S3.** The PL spectra of the polymer **PF** and the monomer **DPA-Mon** in solution with different solvent polarity.



**Figure S4.** Device configurations of the device A (a) and the device B (b).

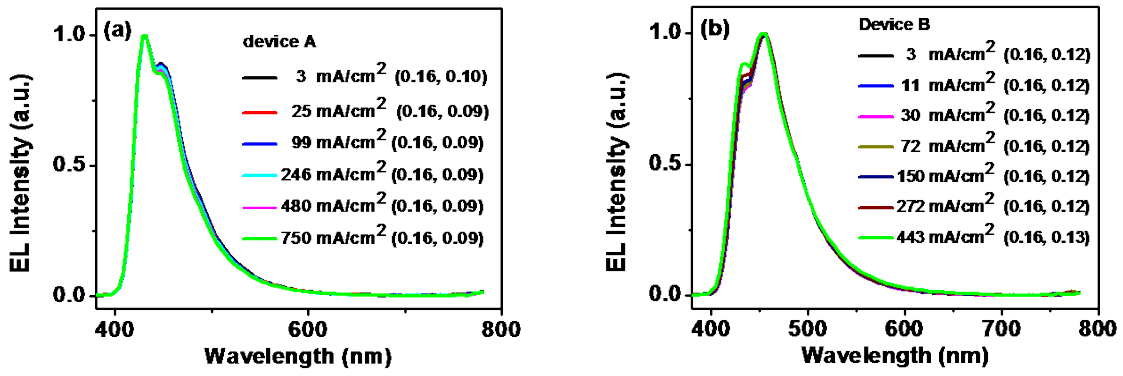
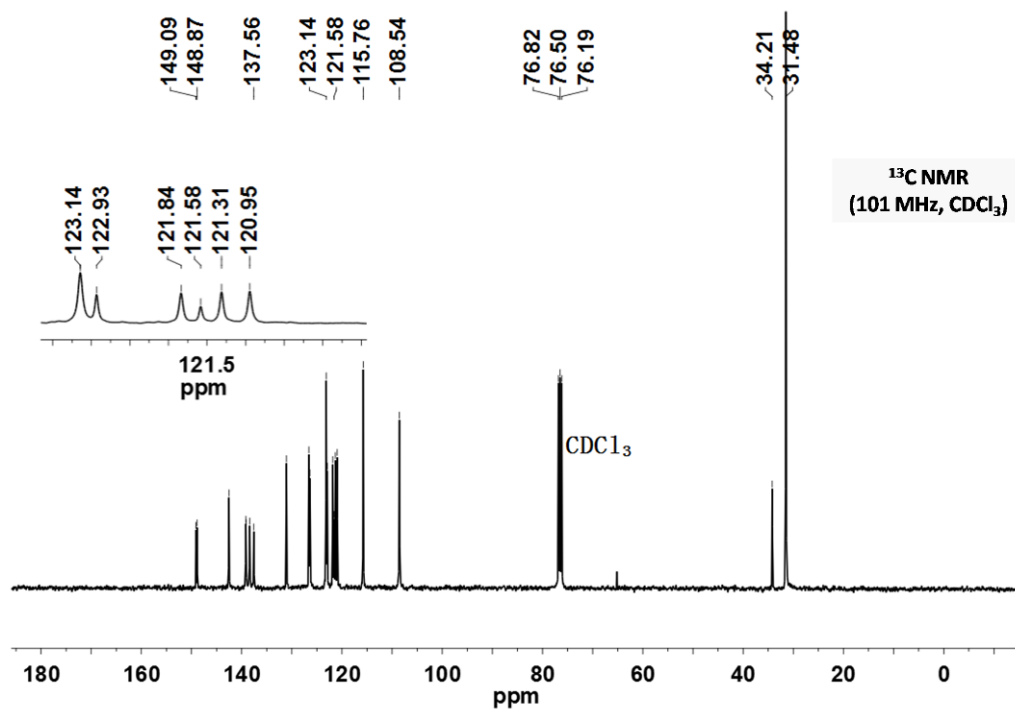
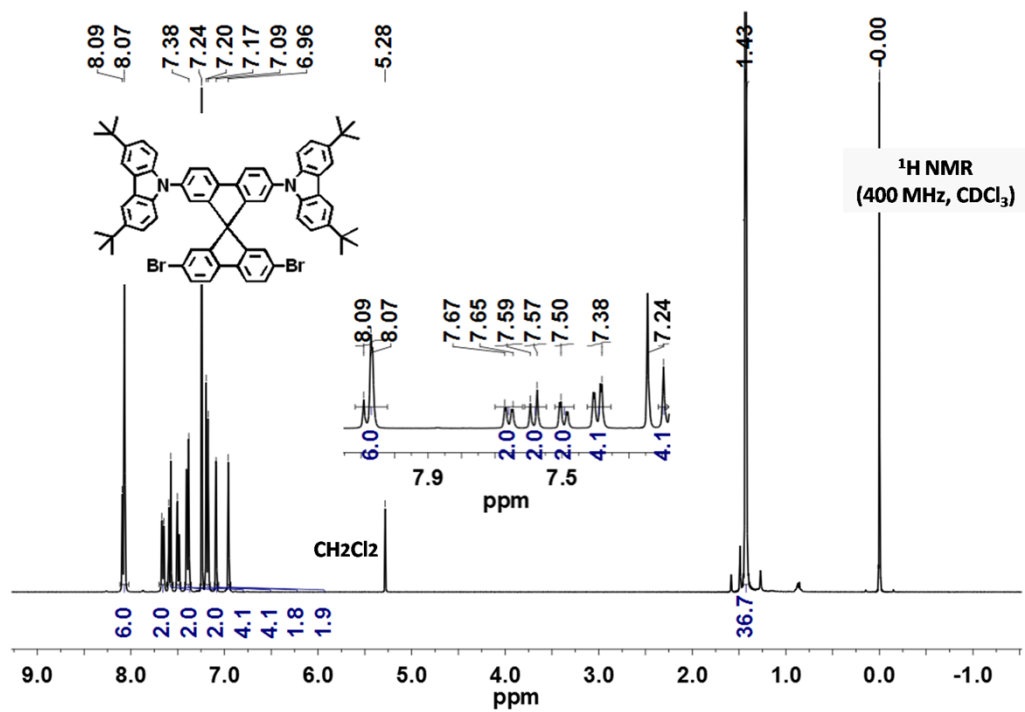


Figure S5. EL spectra of devices A and B under different applied current densities.



**Figure S6.** <sup>1</sup>H NMR and <sup>13</sup>C NMR spectra of the monomer Cz-Mon.

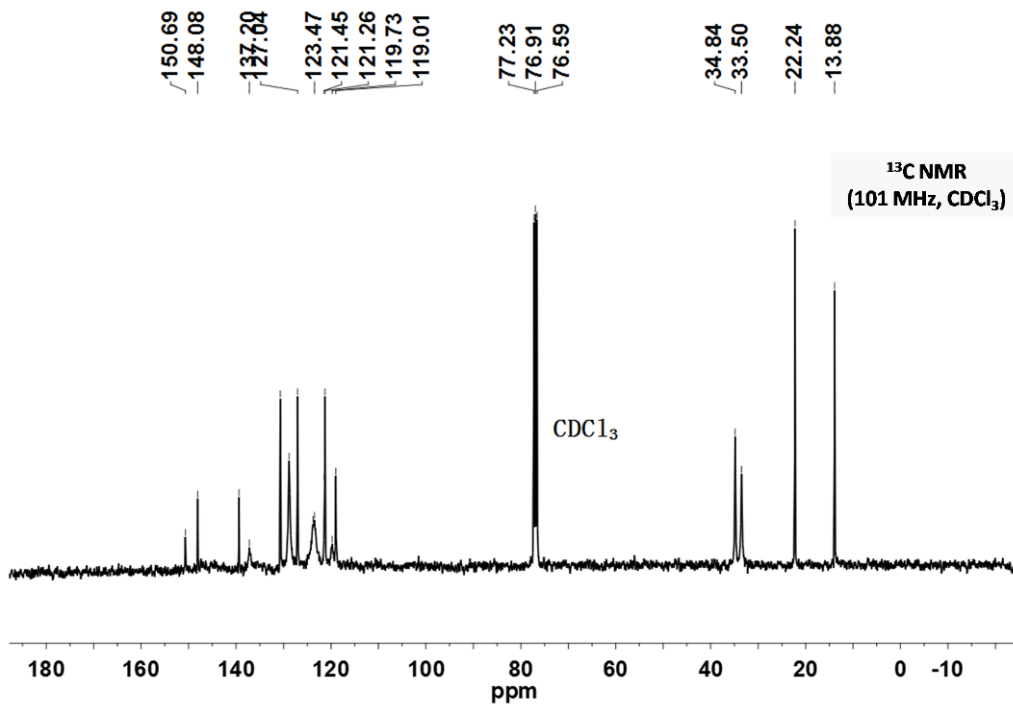
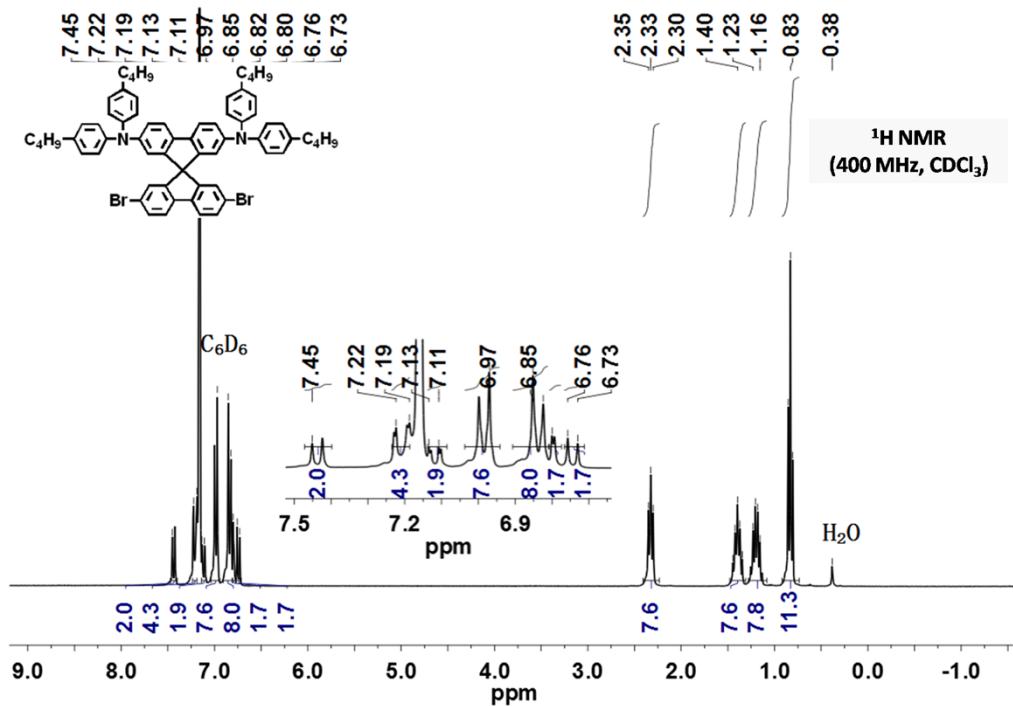


Figure S7. <sup>1</sup>H NMR and <sup>13</sup>C NMR spectra of the monomer DPA-Mon.

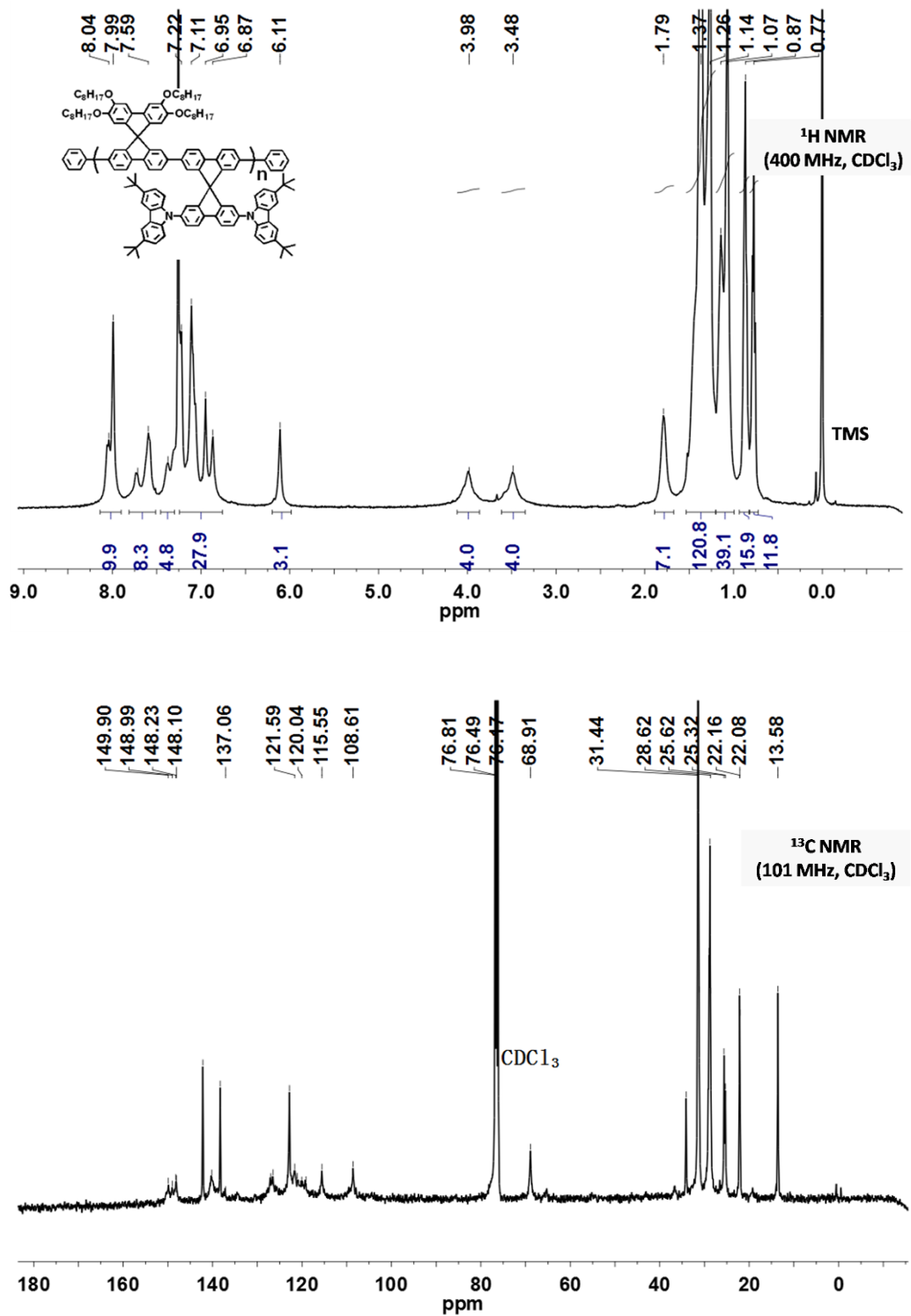


Figure S8. <sup>1</sup>H NMR and <sup>13</sup>C NMR spectra of the Cz-PSF.

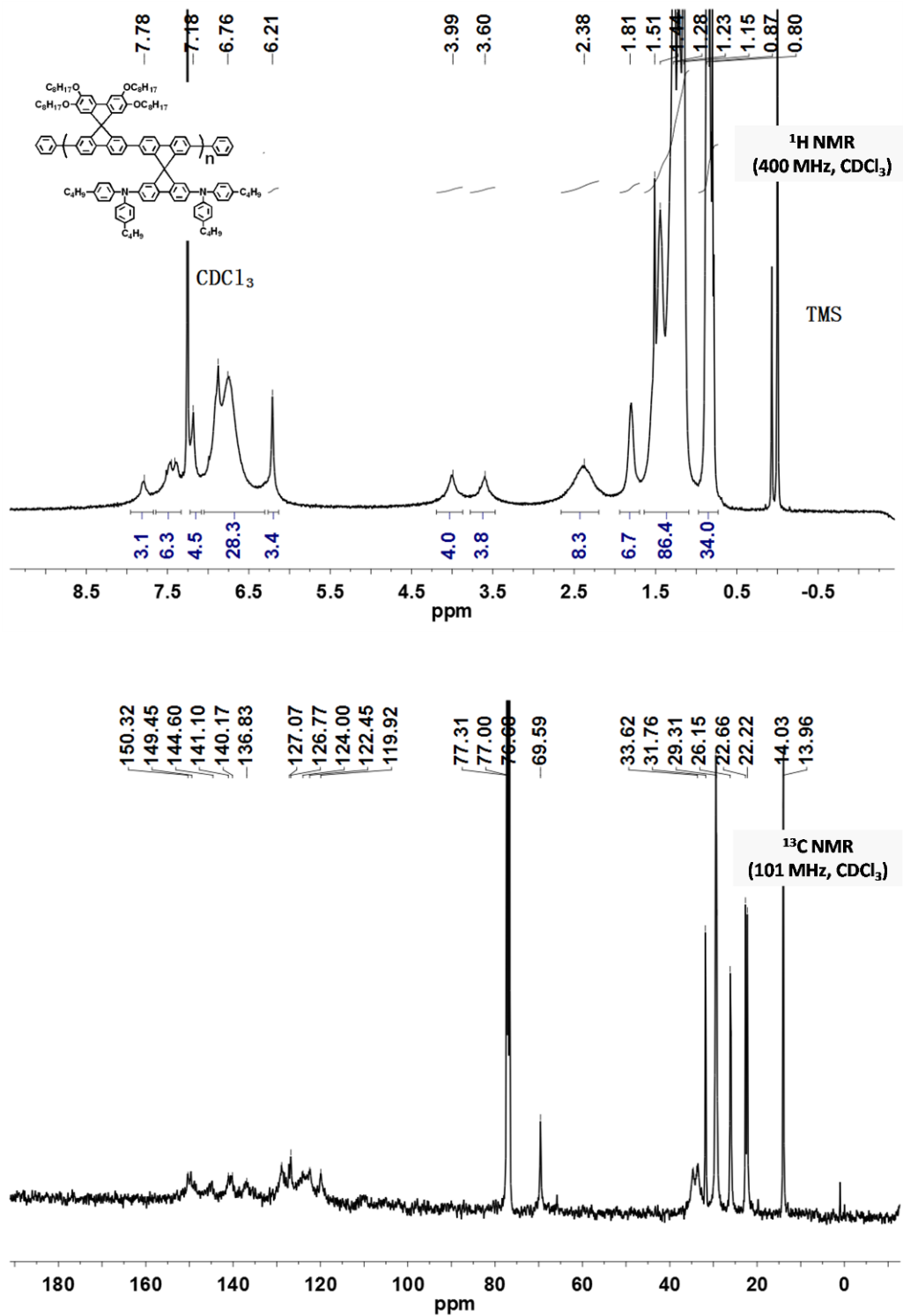
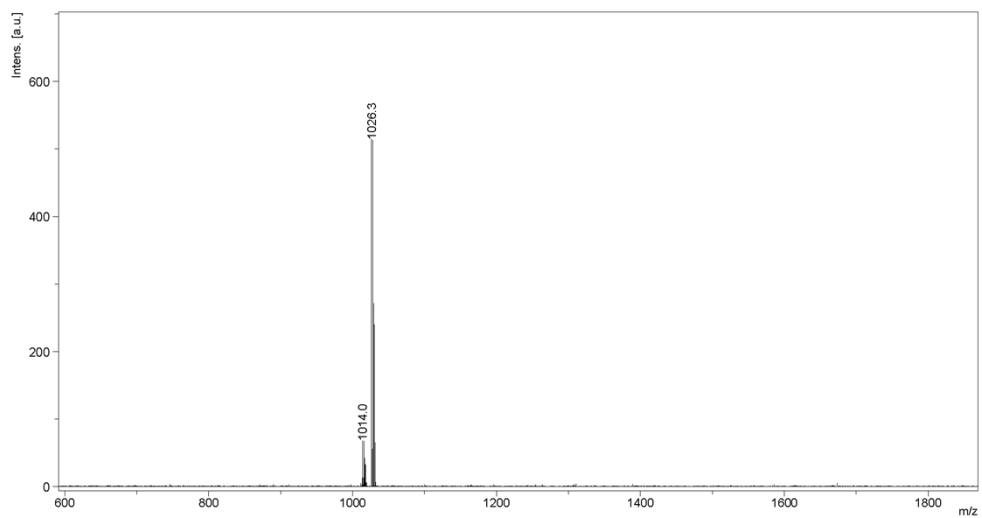


Figure S9. <sup>1</sup>H NMR and <sup>13</sup>C NMR spectra of DPA-PSF.



D:\Data\2014\0304\WXC-SFCZ\0\_D1Z1

Comment 1 DIT  
Comment 2



Bruker Daltonics flexAnalysis

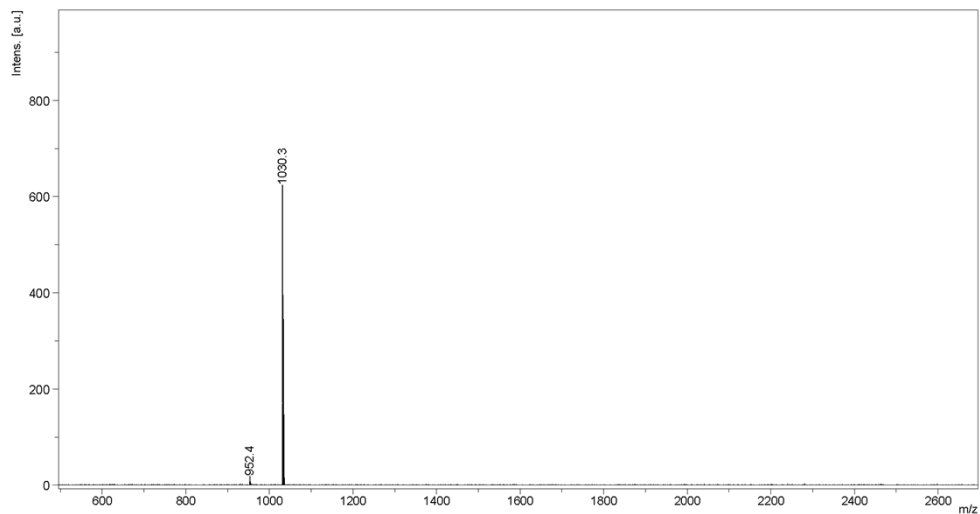
printed: 3/4/2014 10:57:45 AM

**Figure S10.** MALDI-TOF mass spectrum of **Cz-Mon**.

D:\Data\2014\0304\WXC-SPTPA\0\_D161

Comment 1 DIT

Comment 2



Bruker Daltonics flexAnalysis

printed: 3/4/2014 11:00:39 AM

**Figure S11.** MALDI-TOF mass spectrum of **DPA-Mon.**