

## Supporting Information

### **Tuning multiple arms for camptothecin and folate conjugations on star-shaped copolymers to enhance glutathione-mediated intracellular drug delivery**

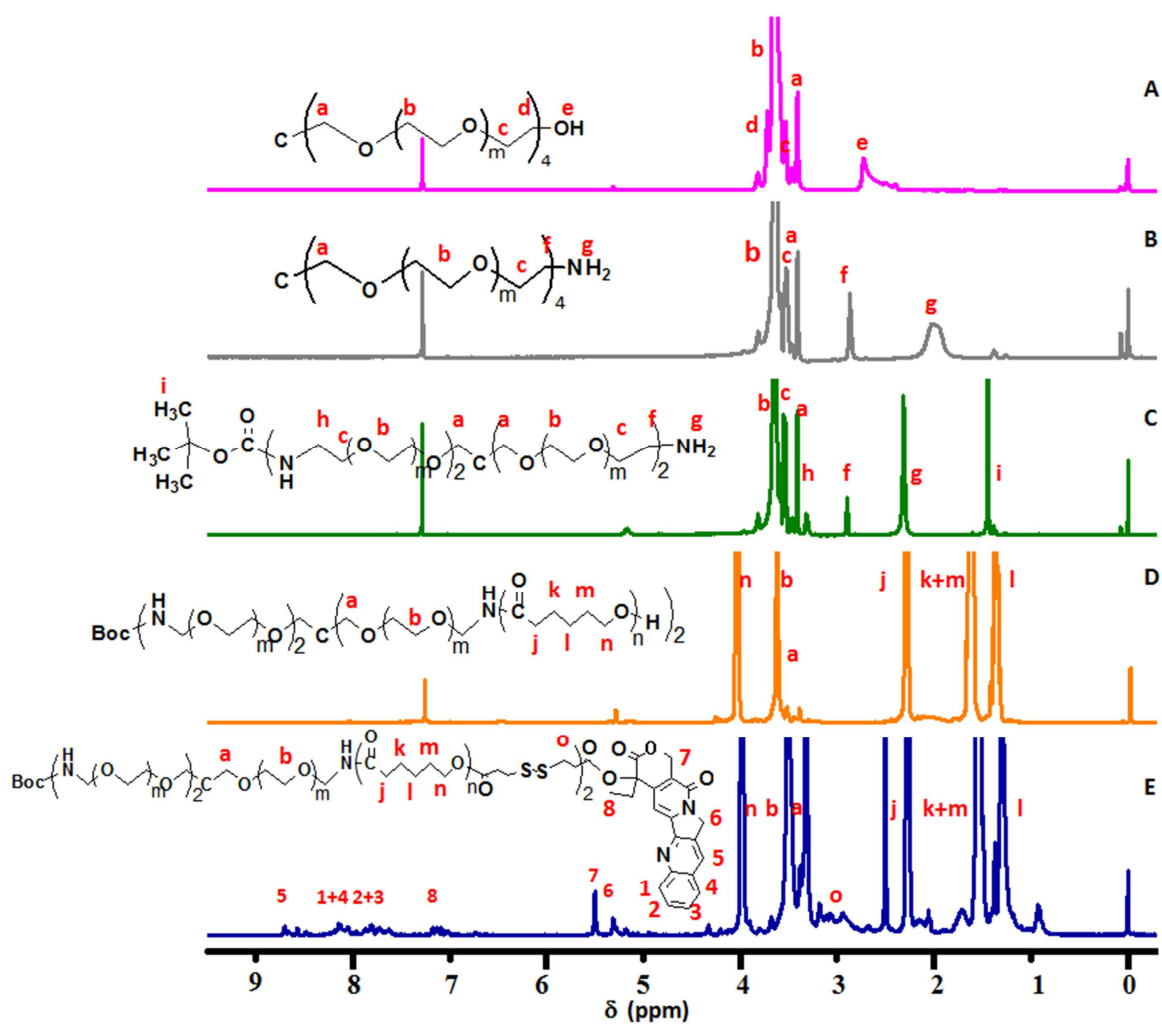
**Yun Zhang,<sup>1</sup> Maohua Chen,<sup>1</sup> Xiaoming Luo, Hong Zhang, Chaoyu Liu, Huiyan Li, Xiaohong Li\***

*Key Laboratory of Advanced Technologies of Materials, Ministry of Education of China, School of Materials Science and Engineering, Southwest Jiaotong University, Chengdu 610031, P. R. China*

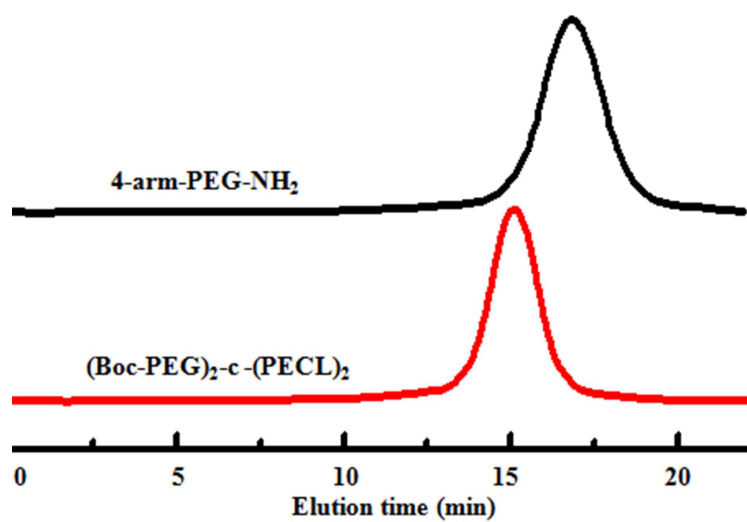
<sup>1</sup> These authors contributed equally to the work.

\* Corresponding Author. School of Materials Science and Engineering, Southwest Jiaotong University, Chengdu 610031, P.R. China. Tel: +8628-87634068, Fax: +8628-87634649.

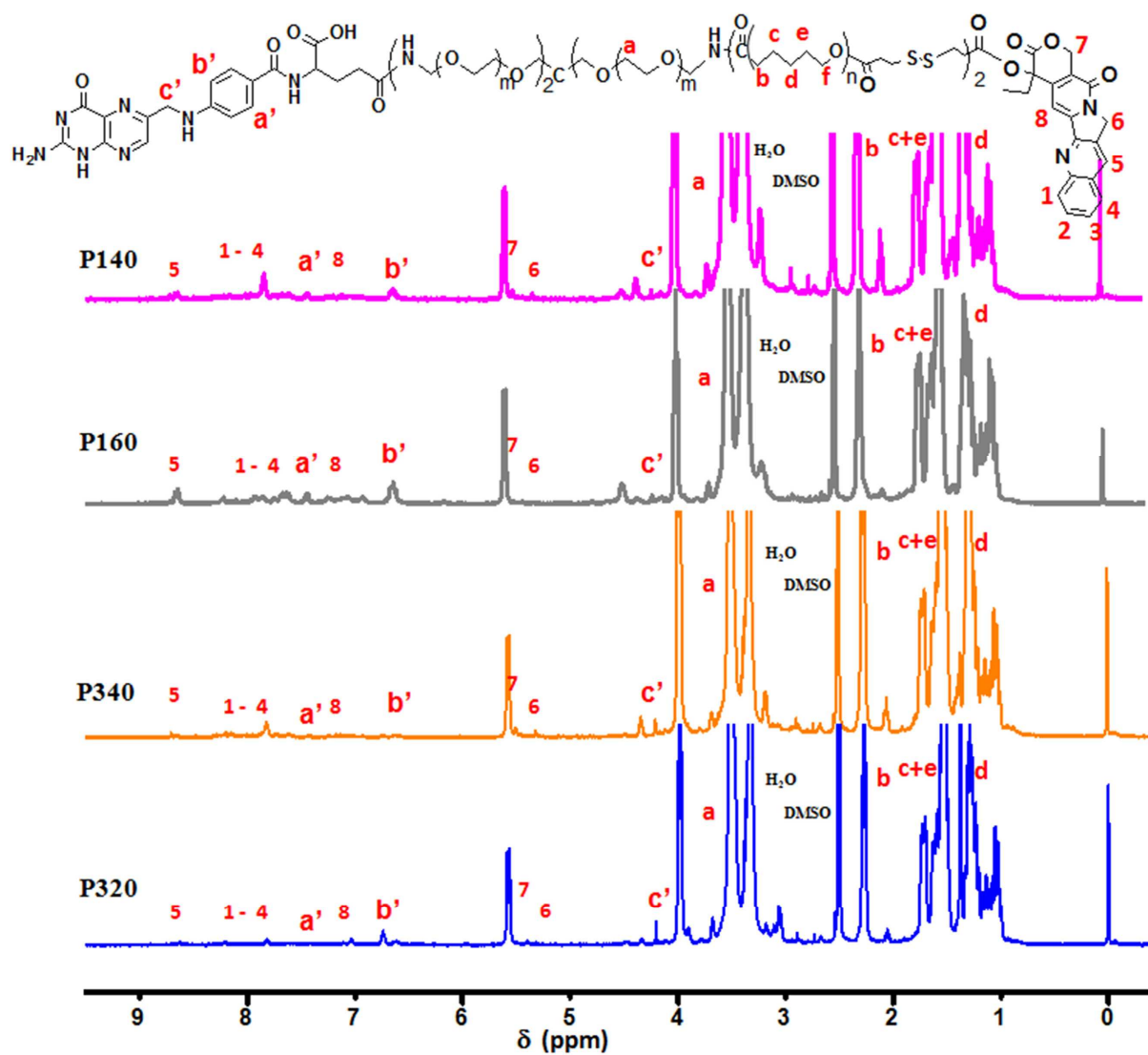
e-mail: [xhli@swjtu.edu.cn](mailto:xhli@swjtu.edu.cn).



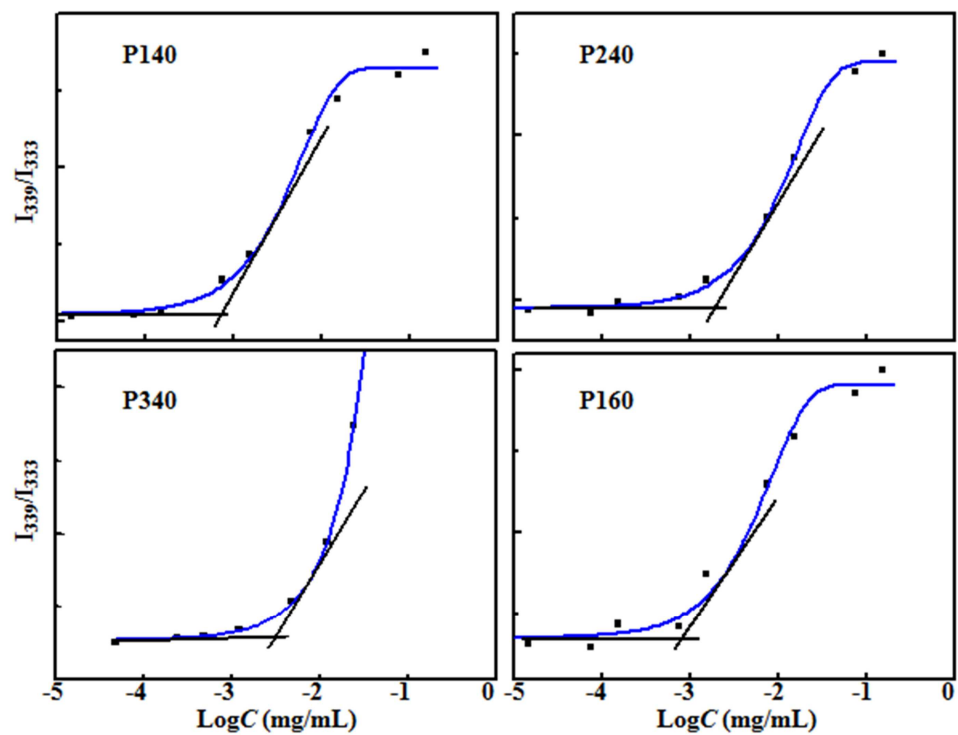
**Fig. S1.**  $^1\text{H-NMR}$  spectra of (A) 4-arm-PEG, (B) 4-arm-PEG- $\text{NH}_2$ , (C) Boc protected  $(\text{Boc-PEG})_2\text{-c-}(\text{PEG})_2$ , (D)  $\epsilon\text{-CL}$  copolymerized  $(\text{Boc-PEG})_2\text{-c-}(\text{PECL})_2$  and (E) CPT conjugated  $(\text{Boc-PEG})_2\text{-c-}(\text{PECL-SS-CPT})_2$ .



**Fig. S2.** GPC elution profiles of 4-arm-PEG-NH<sub>2</sub> and Boc-protected 4-arm-PECL used for the preparation of P240 copolymers ((Boc-PEG)<sub>2</sub>-c-(PECL)<sub>2</sub>).



**Fig. S3.** <sup>1</sup>H-NMR spectra of P140, P160, P340 and P320 copolymers with FA and CPT conjugated.



**Fig. S4.** I<sub>339</sub>/I<sub>333</sub> band intensity ratios of pyrene as a function of logarithm concentrations of P140, P240, P340 and P160 micelles.