

Supplementary Information

One-step solution synthesis of bismuth sulfide (Bi₂S₃) with various hierarchical architectures and their photoresponse properties

Guanjun Xiao,^a Qingfeng Dong,^b Yingnan Wang,^a Yongming Sui,^a Jiajia Ning,^a
Zhaoyang Liu,^b Wenjing Tian,^{*b} Bingbing Liu,^a Guangtian Zou^a and Bo Zou^{*a}

State Key Laboratory of Superhard Materials, Jilin University, Changchun 130012, China; and State Key Laboratory of Supramolecular Structure, Jilin University, Changchun 130012, China

^a State Key Laboratory of Superhard Materials, Jilin University

^b State Key Laboratory of Supramolecular Structure and Materials, Jilin University

* Corresponding authors. E-mails: zoubo@jlu.edu.cn; wjtian@jlu.edu.cn

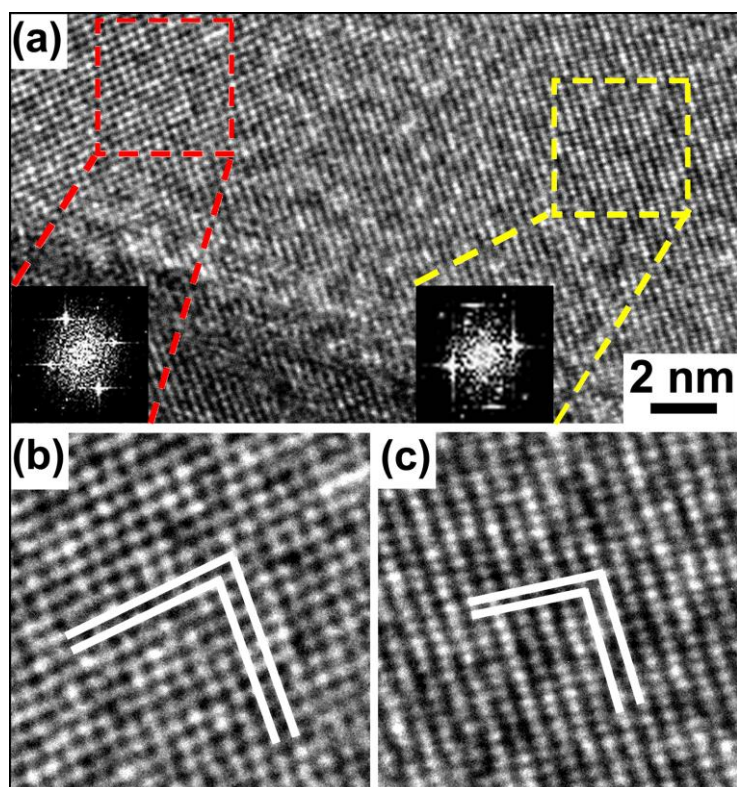


Figure S1. HRTEM image of near the node of individual sheaf-like Bi_2S_3 MCs. (a) shows the overall HRTEM image. (b) and (c) depict the magnified images corresponding to the red and yellow dashed area, respectively. The insets are the corresponding FFT patterns.

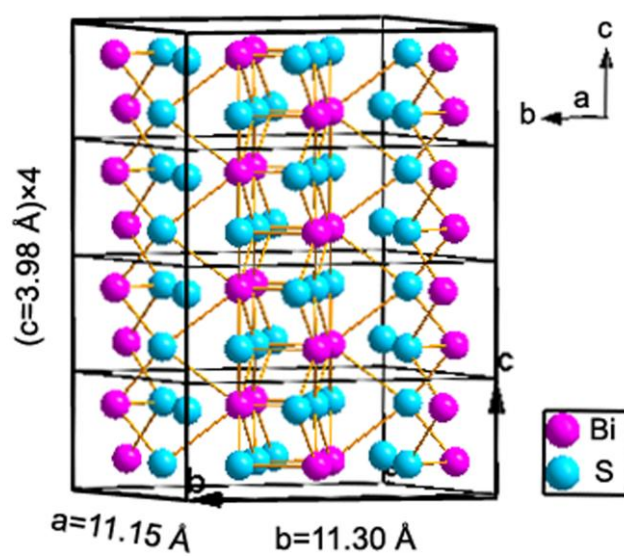


Figure S2. The unit cell prolong 4 times along c -axis marked with cell constants of orthorhombic Bi_2S_3 .

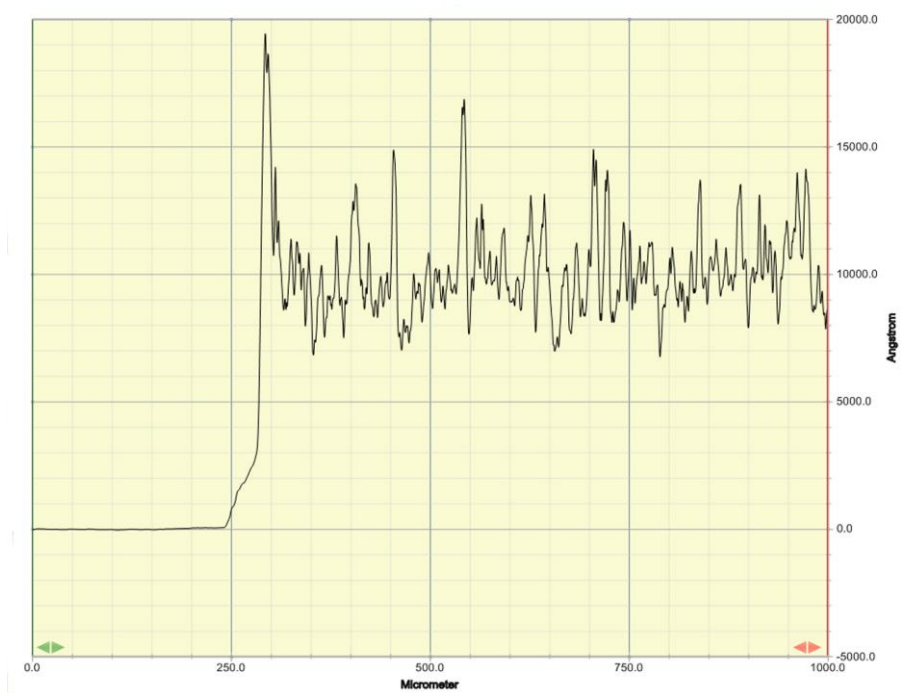


Figure S3. Thickness and surface roughness characterization of hierarchical Bi_2S_3 -based film.