

Page: 2; Figure: 2

Supplementary materials

The following information is provided to the article in RCS Advance

**“Simultaneous bioelectrochemical degradation of algae sludge
and energy recovery in microbial fuel cells”**

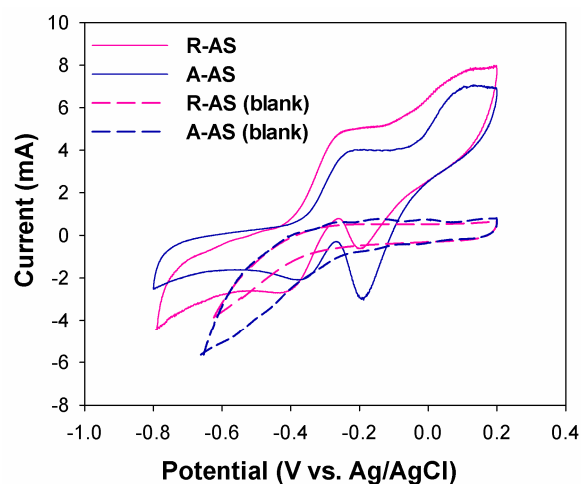


Fig.S1 Cyclic voltammogram analysis of biofilm anodes in MFCs fed with R-AS and A-AS at scan rate of 1mV/s. New anodes without biofilm in MFCs fed with R-AS and A-AS were scanned as blank experiments.

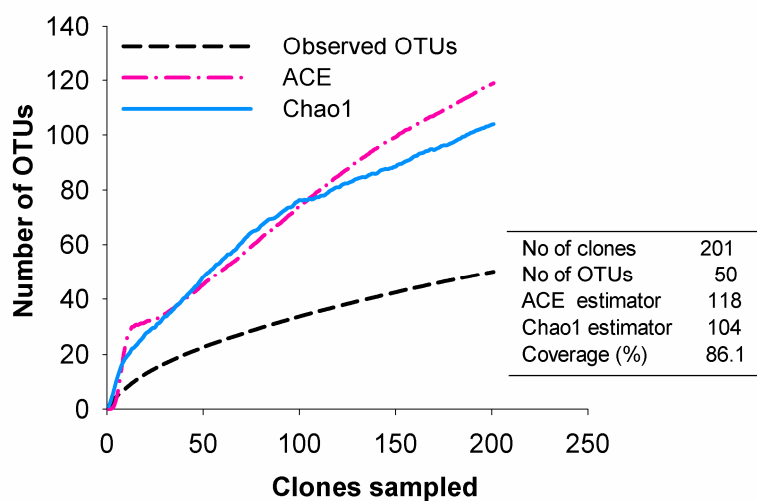


Fig.S2 Rarefaction curves of observed and estimated (ACE and Chao1) phylotype richness from the 16S rRNA gene clone library. The OTU was defined by a 3% distance.