

## SUPPLEMENTARY INFORMATION 2

### Synthesis of self-assembling glycerotriazolophanes

Mohit Tyagi, Nikhil Taxak, Prasad V. Bharatam, K. P. Ravindranathan Kartha\*

Department of Medicinal Chemistry, National Institute of Pharmaceutical Education and  
Research, SAS Nagar, Punjab 160062, India

\*E-mail: rkartha@niper.ac.in

### Table of Contents

<b>S1</b>	Computational details
<b>S2</b>	Procedure for DFT calculation in flowchart-form
<b>Figure S1</b>	The polymeric arrangement of macromolecules <b>5a</b> and <b>6a</b> and correlation with their SEM analysis
<b>Figure S2</b>	The AIM analysis of monomeric and dimeric structures of macromolecules <b>5a</b> and <b>6a</b> indicating the presence of different interactions
<b>S3</b>	Archive-entries of all the optimized geometries, along with absolute energies and frequencies

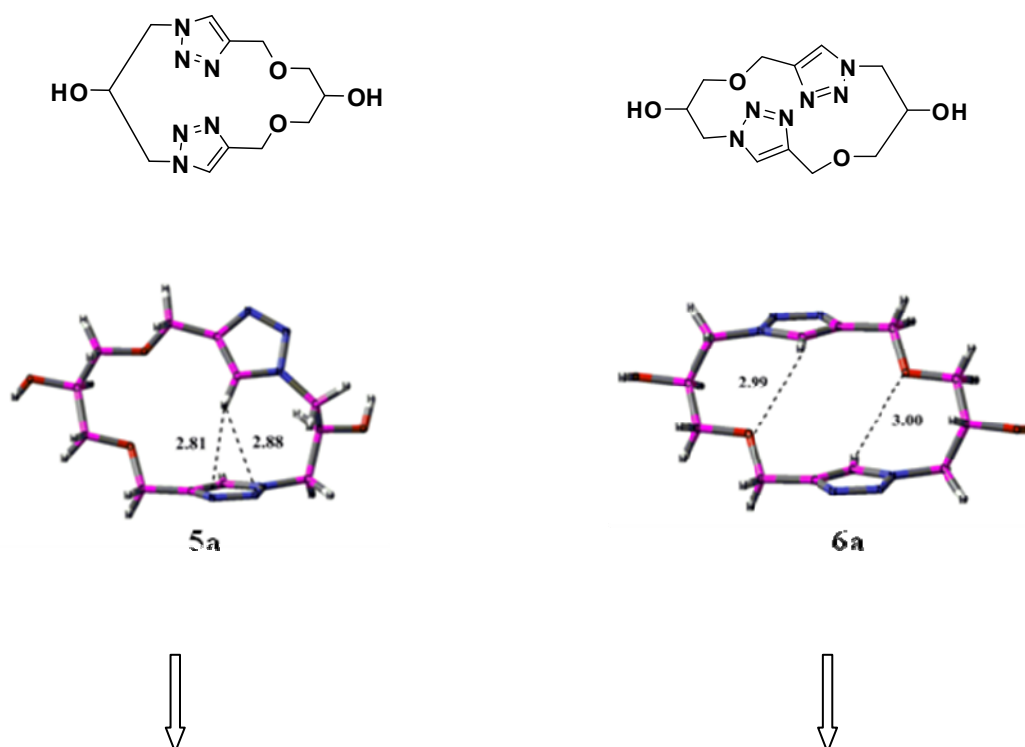
### Supporting Information

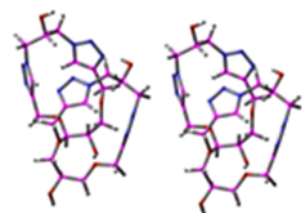
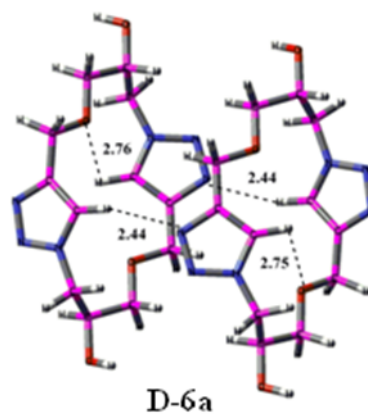
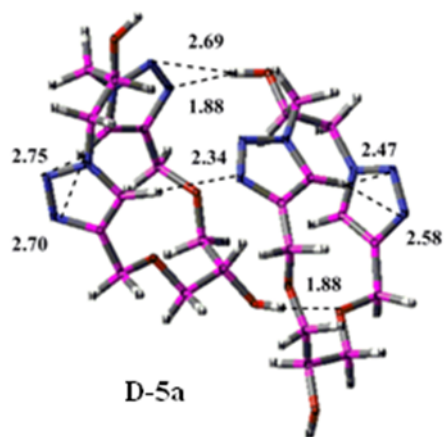
#### S1 Computational details

All the Density Functional Theory (DFT)<sup>1</sup> calculations were carried out using the Gaussian03 package<sup>2</sup> utilizing gradient geometry optimization. Geometry optimizations were performed using the B3LYP functional with the 6-31+G(d) basis set.<sup>3,4</sup> Initially, the geometries of monomers (**5a** and **6a**) were optimized using the same basis set. The optimized geometries of the monomers were utilized in constructing the geometries of dimers (**D-5a** and **D-6a**), which were further optimized. Further, polymeric arrangements of **5a** and **6a** were obtained using many optimized geometries of dimers. The different polymeric arrangements of **5a** and **6a** were observed owing to different inter- and intramolecular interactions as described in the results-section. The vibrational frequency calculations for all structures at the same level of geometry optimization were performed to characterize them as minima on the potential energy surface.<sup>5</sup> The estimates of zero point energy values were scaled by 0.9806 before employing them in correcting the absolute energies.<sup>6</sup> The charge analysis was carried out using the Natural Bond Orbital (NBO) method.<sup>7</sup> Atoms in molecules (AIM) method<sup>8</sup> was employed to trace the bond paths associated with intra- and intermolecular interactions, using AIM2000 software package. The energy and geometric parameters used in the discussion are from B3LYP/6-31+G(d) method unless otherwise specifically mentioned.

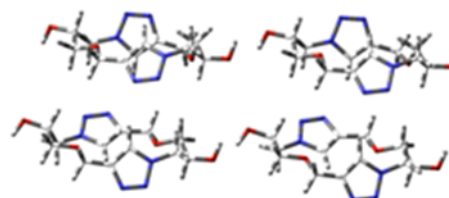
- 1 (a) Parr, R. G. *Density Functional Theory of Atoms and Molecules*; Oxford University Press: New York, 1989. (b) Pople, J. A.; Beveridge, D. L. *Approximate Molecular Orbital Theory*; McGraw-Hill Book, New York, 1970.
- 2 Gaussian 03, Revision C.02, Frisch, M. J.; Trucks, G. W.; Schlegel, H. B.; Scuseria, G. E.; Robb, M. A.; Cheeseman, J. R.; Montgomery, Jr., J. A.; Vreven, T.; Kudin, K. N.; Burant, J. C.; Millam, J. M.; Iyengar, S. S.; Tomasi, J.; Barone, V.; Mennucci, B.; Cossi, M.; Scalmani, G.; Rega, N.; Petersson, G. A.; Nakatsuji, H.; Hada, M.; Ehara, M.; Toyota, K.; Fukuda, R.; Hasegawa, J.; Ishida, M.; Nakajima, T.; Honda, Y.; Kitao, O.; Nakai, H.; Klene, M.; Li, X.; Knox, J. E.; Hratchian, H. P.; Cross, J. B.; Bakken, V.; Adamo, C.; Jaramillo, J.; Gomperts, R.; Stratmann, R. E.; Yazyev, O.; Austin, A. J.; Cammi, R.; Pomelli, C.; Ochterski, J. W.; Ayala, P. Y.; Morokuma, K.; Voth, G. A.; Salvador, P.; Dannenberg, J. J.; Zakrzewski, V. G.; Dapprich, S.; Daniels, A. D.; Strain, M. C.; Farkas, O.; Malick, D. K.; Rabuck, A. D.; Raghavachari, K.; Foresman, J. B.; Ortiz, J. V.; Cui, Q.; Baboul, A. G.; Clifford, S.; Cioslowski, J.; Stefanov, B. B.; Liu, G.; Liashenko, A.; Piskorz, P.; Komaromi, I.; Martin, R. L.; Fox, D. J.; Keith, T.; Al-Laham, M. A.; Peng, C. Y.; Nanayakkara, A.; Challacombe, M.; Gill, P. M. W.; Johnson, B.; Chen, W.; Wong, M. W.; Gonzalez, C.; and Pople, J. A.; Gaussian, Inc., Wallingford CT, 2004.
- 3 Becke, A. D. *J. Chem. Phys.* **1993**, *98*, 5648.
- 4 Lee, C.; Yang, W.; Parr, R. G. *Phys. Rev.* **1988**, *B37*, 785.
- 5 Ochterski, J. W. Gaussian, Inc. [http://www.Gaussian.com/g\\_white-pap/thermo.htm](http://www.Gaussian.com/g_white-pap/thermo.htm)
- 6 Scott, A. P.; Radom, L. *J. Phys. Chem.* **1996**, *100*, 16502-16513.
- 7 Reed, A. E.; Wienhold, F.; Curtiss, L. A. *Chem. Rev.* **1988**, *88*, 899-926.
- 8 Bader, R. *Chem. Rev.* 1991, *91*, 893-928.

## S2 Procedure for DFT calculation in flowchart-form

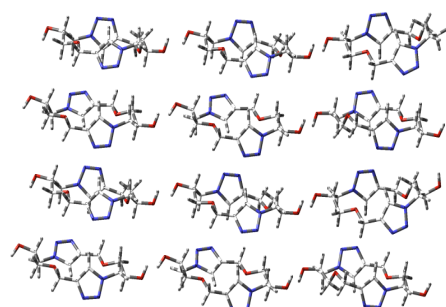
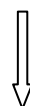
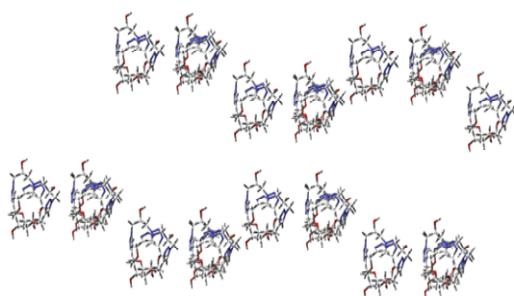




**Tetrameric arrangement of 5a**

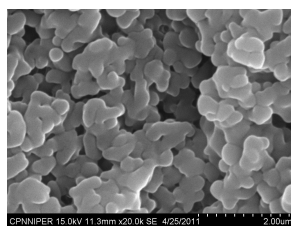
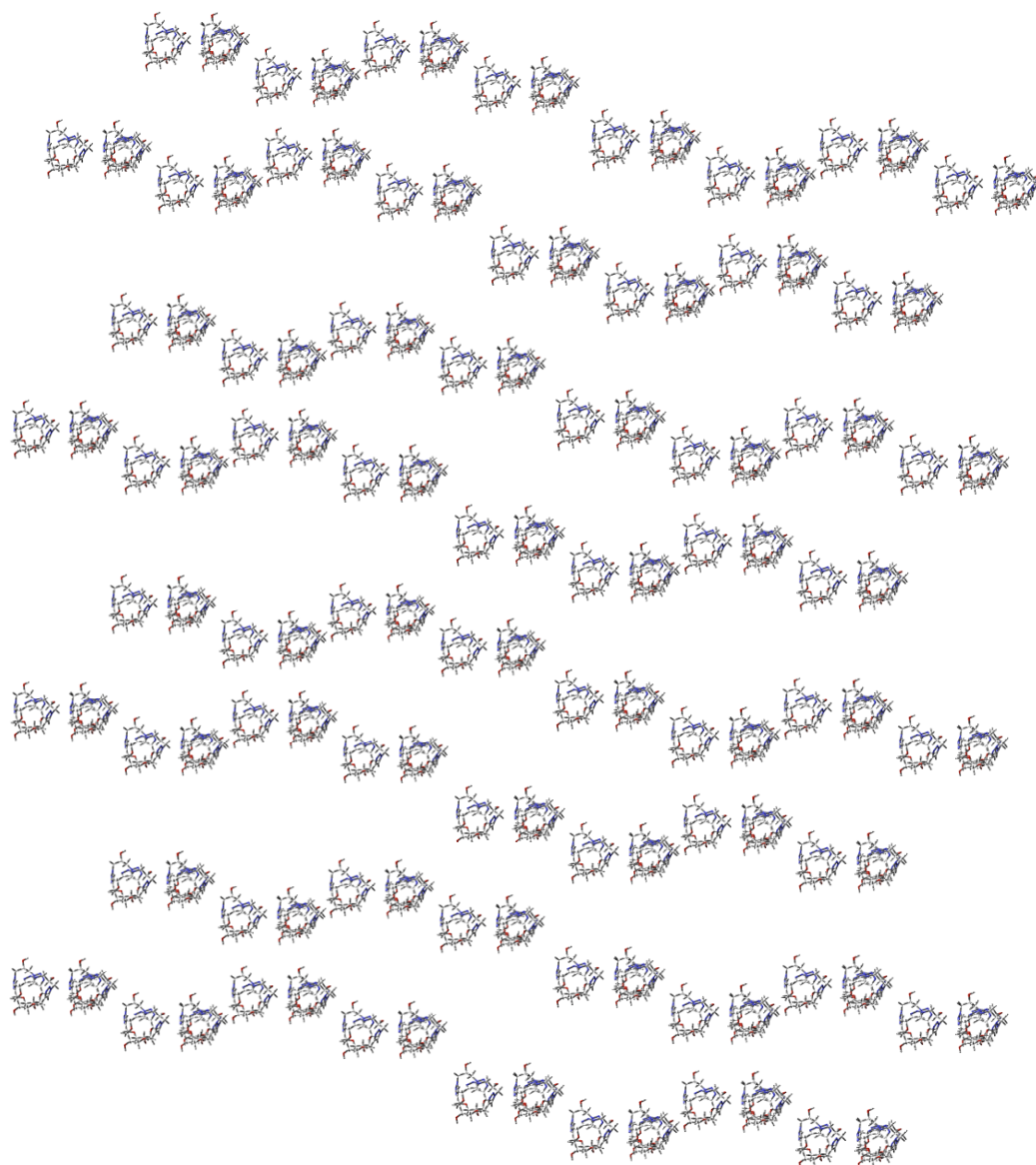


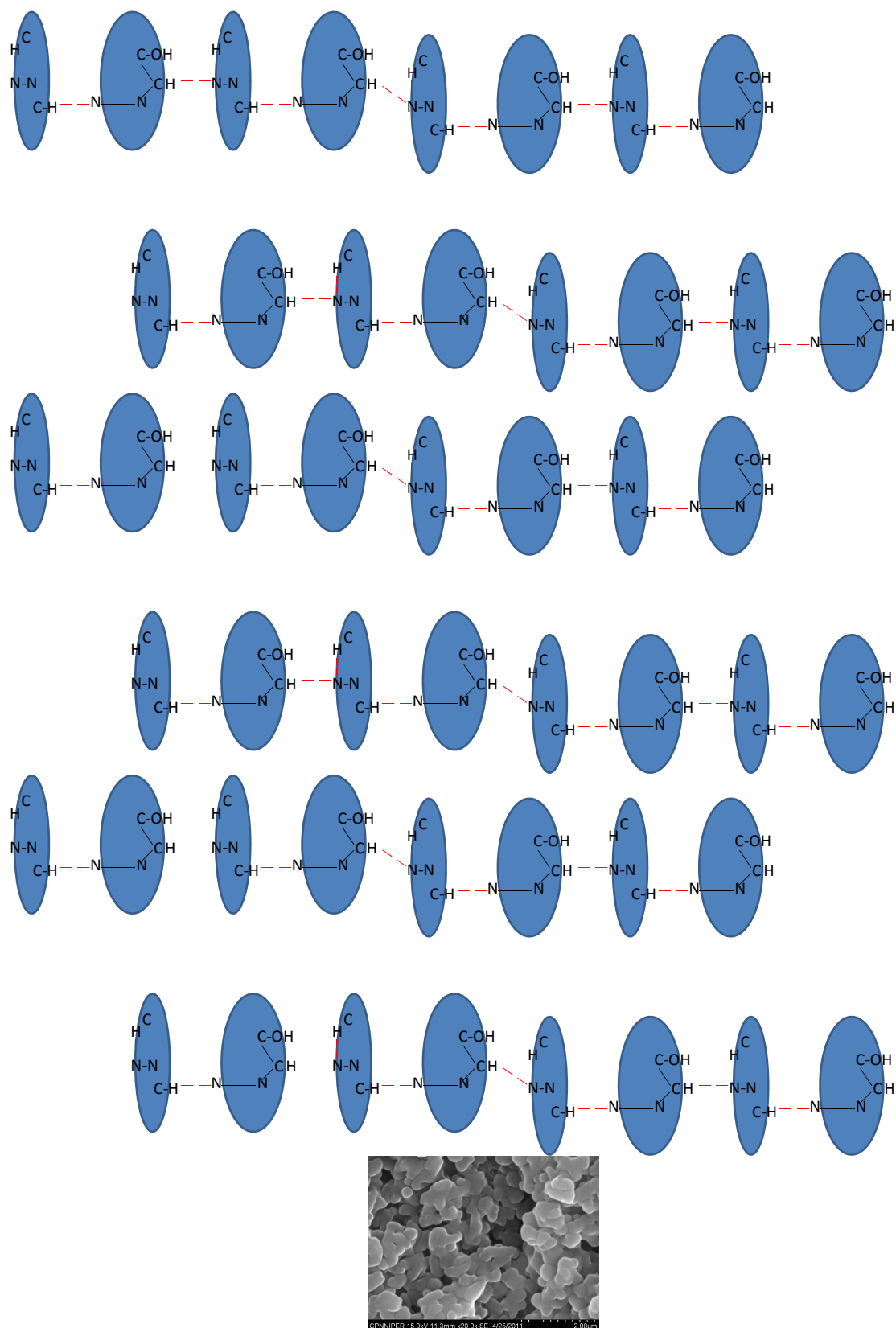
**Tetrameric arrangement of 6a**



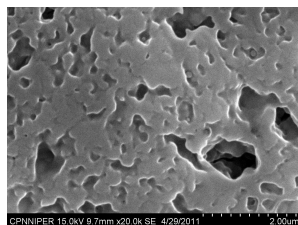
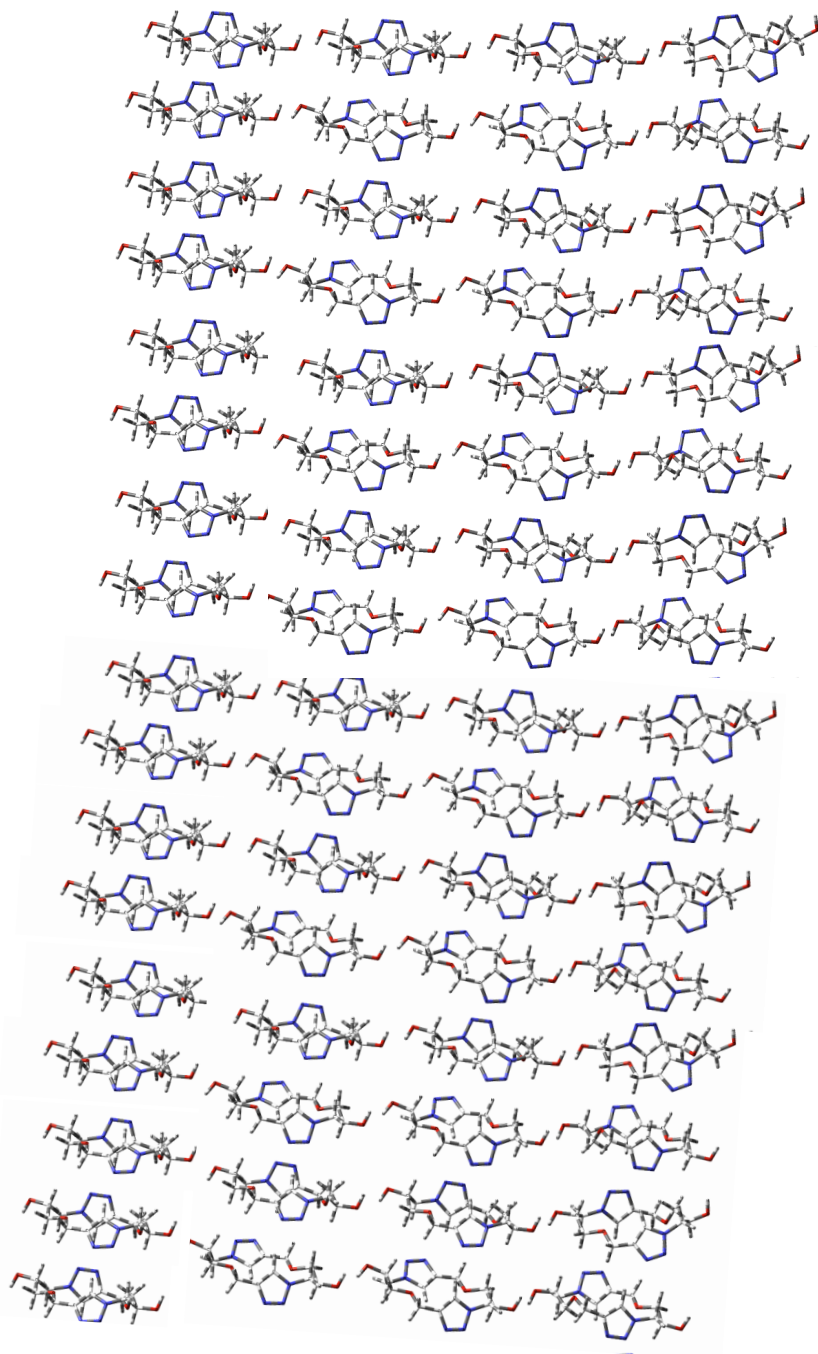
**Extending further to get polymeric arrangement of 5a and 6a**

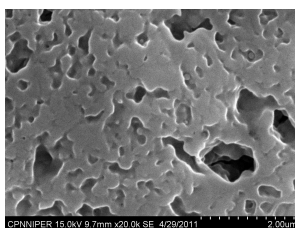
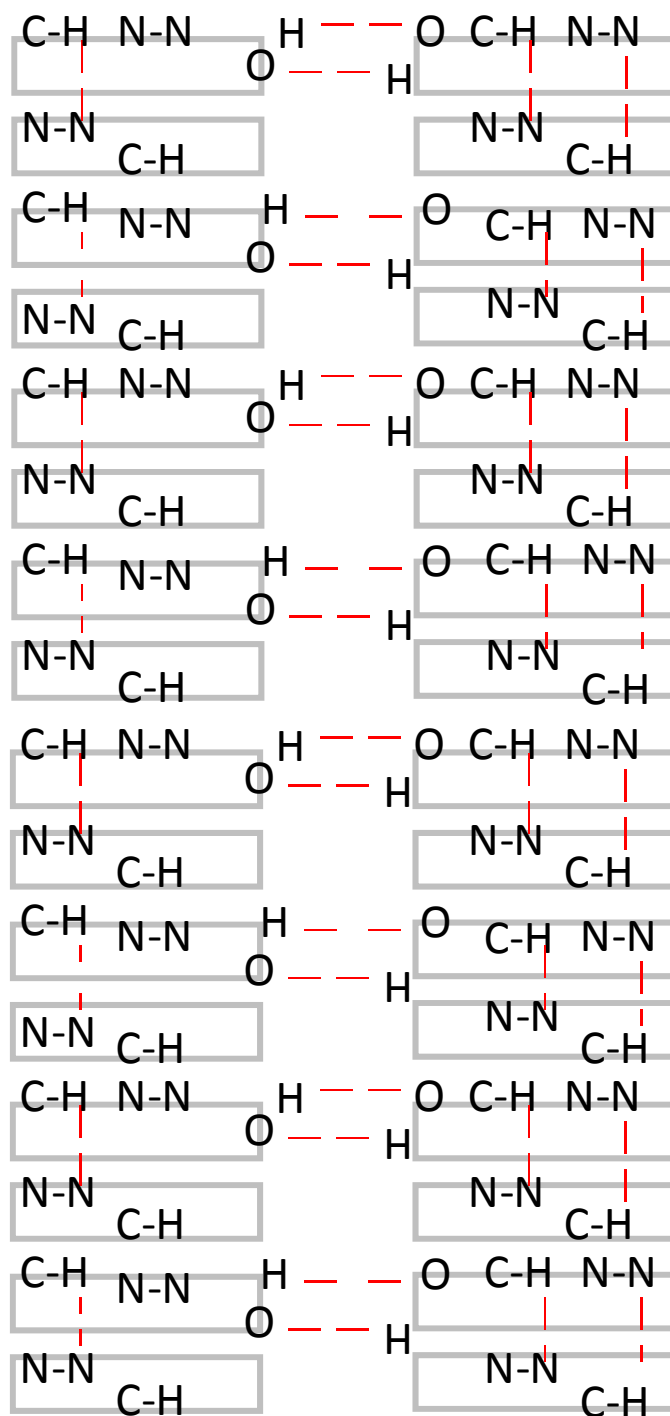
**Figure S1** The polymeric arrangement of macromolecules **5a** and **6a** and correlation with their SEM analysis





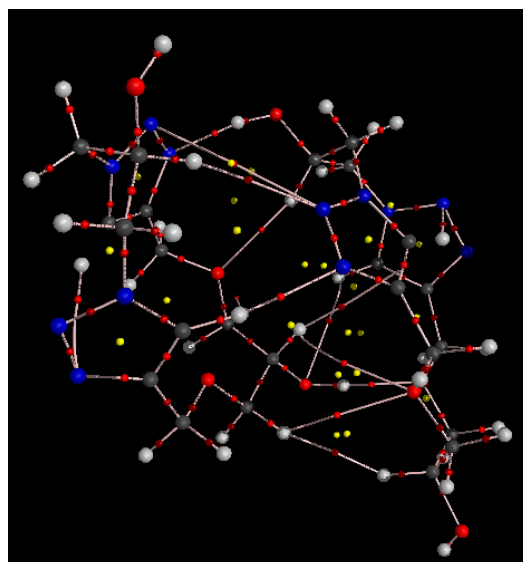
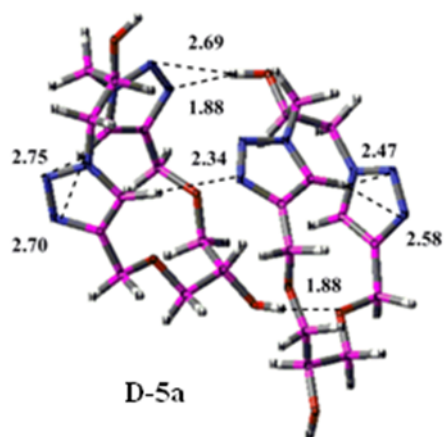
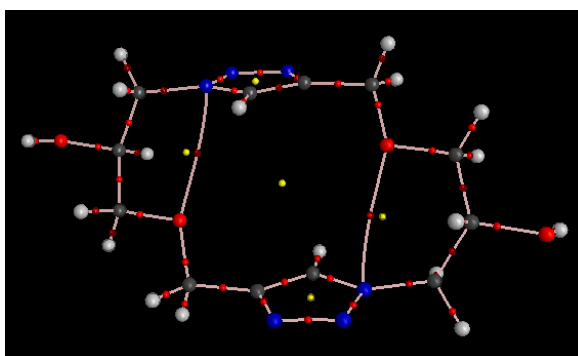
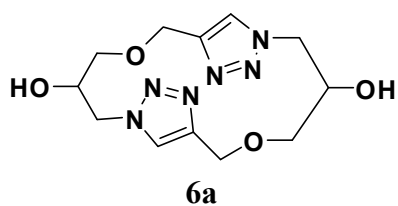
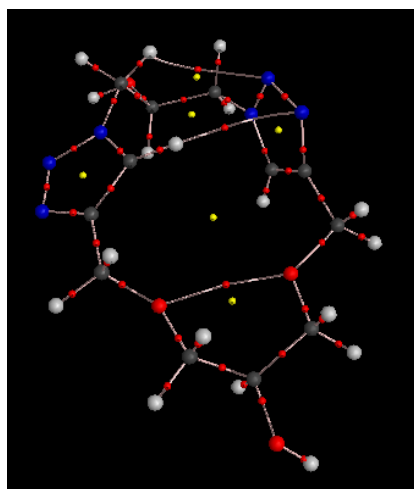
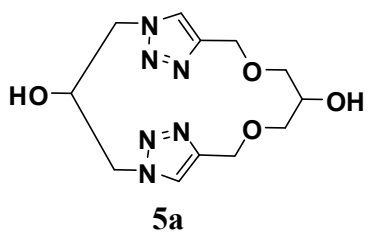
Cs-Pseudosymmetric arrangement (polymeric) of macromolecule **5a**: Aggregates and globules with spaces in between as seen in the SEM



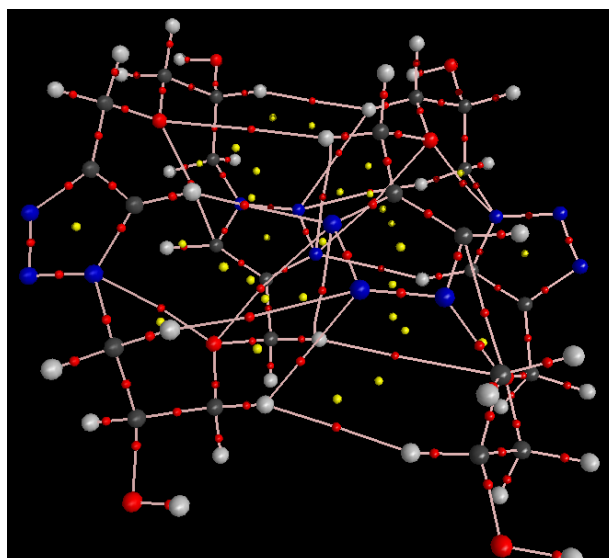
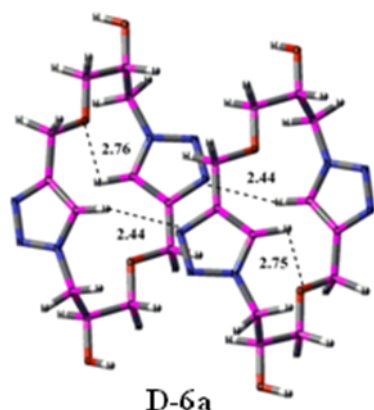


C2-Pseudosymmetric arrangement (polymeric) of macromolecule **6a**: Flat and diffused SEM.

**Figure S2** The AIM analysis of monomeric and dimeric structures of macromolecules **5a** and **6a** showing the presence of different interactions (Yellow points: Ring critical points; Red points: Bond critical points)







### S3 Archive-entries of all the optimized geometries, along with absolute energies and frequencies

#### Monomer 5a

```
1\1\GINC-NODE8\Freq\RB3LYP\6-31+G(d)\C12H18N6O4\DPATEL\17-Aug-2011\0\
#P Geom=AllCheck Guess=Read SCRF=Check GenChk RB3LYP/6-31+G(d) Freq\M
onomer_Cs_symmetric.gjf\0,1\H,-0.0497532383,-0.0424634675,-0.08807224
48\C,-0.0815695814,-0.0249528677,1.0101605597\C,1.3841055845,0.0156566
3,1.5346643021\O,-0.7857562862,-1.1610930749,1.5004443185\H,1.53220353
86,0.8159934896,2.2642328696\H,1.6125290726,-0.9372947119,2.0183117221
\N,2.3498916175,0.1990261639,0.4612267856\H,-0.4177626136,-1.961068655
5,1.0914695088\C,2.886436217,1.3420898791,-0.0289651642\N,2.7049740122
,-0.8622916571,-0.3040786539\C,3.6017707127,0.939378734,-1.1407574077\
H,2.7142306119,2.3093538986,0.4190141228\N,3.4632680185,-0.4120294539,
-1.2683588792\C,0.7162746519,5.2086017592,-1.0639569425\C,4.3451311139
,1.780196175,-2.1277379731\H,1.3824738081,5.9383010588,-0.58162442\H,-
0.1572056396,5.7528102073,-1.4598823932\O,1.3825503071,4.5267675521,-2
.1215615513\H,5.0722891598,2.4315045037,-1.6166822554\H,4.8952988619,1
.1297775631,-2.8230043264\O,3.3914462067,2.5816055234,-2.8200551327\C,
2.0768054217,5.371405549,-3.0183974772\C,3.9407897229,3.6624149233,-3.
5470836969\H,2.816286822,5.9892280586,-2.4825182183\H,1.3725287047,6.0
584449001,-3.5238769294\C,2.7924927845,4.5236093947,-4.0804904299\H,4.
6019987704,4.2704145074,-2.9064661139\H,4.5331448785,3.3071996256,-4.4
047901903\H,2.0619980257,3.8566991472,-4.5597648893\O,3.3949436125,5.3
975722279,-5.0422406928\H,2.699210207,5.8557996885,-5.5378631802\C,-0.
9346123914,1.1712287422,1.4700102941\H,-0.9883901915,1.1943793004,2.56
12742378\H,-1.9481887273,1.0639794944,1.0752928626\N,-0.3895432477,2.4
528259281,1.0416415145\C,-0.4555931892,3.0547830391,-0.1726042829\C,0.
3230848138,4.188421655,-0.0432873851\H,-1.006166721,2.6397809394,-1.00
36237594\N,0.8167646242,4.217588183,1.2291396722\N,0.3866845692,3.1739
763161,1.8867241594\Version=EM64L-G03RevE.01\State=1-A\HF=-1097.43121
21\RMSD=5.508e-09\RMSF=2.855e-06\ZeroPoint=0.3241166\Thermal=0.3443805.
```

## Monomer 6a

```
1\1\GINC-NODE8\Freq\RB3LYP\6-31+G(d)\C12H18N6O4\NTAXAK\01-Nov-2011\0\
#N Geom=AllCheck Guess=Read SCRF=Check GenChk RB3LYP/6-31+G(d) Freq\M
onomer_Pseudo_r.gjf\0,1\C,0.0765169391,-0.03471064,-0.2148960695\H,0.
347494259,-0.021204128,0.8531034719\H,1.006096229,-0.0608602596,-0.801
4797151\N,-0.1767460409,2.1109414482,-1.4631901958\C,-0.6938197521,1.1
826950676,-0.605478036\N,-1.0513988511,3.063110973,-1.6461180597\C,-1.
9641167261,1.5885074832,-0.2484053027\N,-2.1476376325,2.7520972281,-0.
9163591939\C,-5.1994626405,0.0124334455,-2.387069404\H,-6.1326783669,0
.0377572311,-1.80628682\H,-5.4635007813,-0.0005603055,-3.4567784713\O,
-4.4062187064,1.1737880975,-2.1221915868\C,-5.0821535159,2.3855880183,
-2.3895477383\C,-3.3100107123,3.6324411597,-0.9641133738\H,-5.90572109
4,2.5278242907,-1.6628542395\H,-5.5259499021,2.3809110332,-3.397103282
3\C,-4.1034022355,3.5593055751,-2.2894998247\H,-3.9446666374,3.3948565
58,-0.1036205642\H,-2.9456866397,4.6578170959,-0.859177266\H,-3.382405
0167,3.5123874534,-3.1099604523\O,-4.8180106465,4.7785637356,-2.490021
769\H,-5.5477927205,4.8356962574,-1.8508673798\N,-2.9795555291,-2.7751
606999,-1.6753395879\C,-3.1620253432,-1.614723438,-2.3489633807\C,-4.4
31090684,-1.2047519748,-1.9921350358\H,-2.3961324561,-1.1688007777,-2.
9636726953\N,-4.9485082107,-2.127731239,-1.1289230822\N,-4.0753260556,
-3.0805091594,-0.9424294123\O,-0.7190535235,-1.195658604,-0.4739893715
\H,-2.7301903357,1.1378611049,0.3625916468\C,-1.818977695,-3.657721728
2,-1.6253035248\H,-2.1855840195,-4.6827821545,-1.7251979121\C,-0.04326
21332,-2.4075956194,-0.2069355804\H,0.4038756601,-2.4016008219,0.79913
19648\H,0.7777234976,-2.551836687,-0.936150462\C,-1.0233586421,-3.5806
147912,-0.3014965499\O,-0.3096779637,-4.7999278867,-0.0981569653\H,0.4
186824922,-4.860201812,-0.7386447822\H,-1.1850061895,-3.4252796843,-2.
4877200658\H,-1.7428937052,-3.5301069277,0.5200409457\Version=EM64L-G
03RevE.01\State=1-A\HF=-1097.4334753\RMSD=7.103e-09\RMSF=5.937e-06\Zer
oPoint=0.3242274\Thermal=0.344557.
```

## Dimer 5a

```
1\1\GINC-NODE22\Freq\RB3LYP\6-31+G(d)\C24H36N12O8\DPATEL\02-Sep-2011\0
\#P Geom=AllCheck Guess=Read SCRF=Check GenChk RB3LYP/6-31+G(d) Freq\
\Dimer-Cs_symmetric.gjf\0,1\H,2.785206688,-2.0194767794,-1.0691249827
\C,1.8085985561,-2.2712358459,-0.6372429708\C,1.7184980013,-1.64163697
15,0.7867033141\O,1.6444058158,-3.6751311656,-0.5552139532\H,0.7148855
877,-1.2626023074,1.0016937689\H,1.9580083698,-2.4236978378,1.50865139
3\N,2.6710537959,-0.5566460079,1.0303983682\H,2.5382164886,-4.08743731
31,-0.477388189\C,2.5733155624,0.7594739328,0.7285884786\N,3.874012816
4,-0.8254640425,1.5882454111\C,3.7831518584,1.3021533891,1.1167925198\
H,1.6901908931,1.192782118,0.2849538923\N,4.5439766627,0.297615894,1.6
392844516\C,1.7135101218,2.7850846486,-3.3932549203\C,4.2678384421,2.7
083420592,0.9798357339\H,1.072879637,3.6405231883,-3.1468504918\H,1.75
37831337,2.6777560639,-4.486482876\O,3.0428065009,3.0095198033,-2.8903
65237\H,3.5064362705,3.4154646828,1.3439912386\H,5.1780140865,2.845970
6024,1.5820184317\O,4.5314304502,2.969062199,-0.3999607013\C,3.4896010
958,4.3573682945,-2.966846409\C,4.7218469794,4.3404794641,-0.697858591
8\H,2.7411705047,5.0304678394,-2.5229950762\H,3.6306945641,4.654093673
2,-4.0206379497\C,4.8206873703,4.5130939477,-2.2163990084\H,3.88652171
2,4.9441467399,-0.3055638317\H,5.6526015092,4.7186007889,-0.2471078595
\H,5.5443018897,3.7801662668,-2.6002005419\O,5.3011625516,5.8468828436
,-2.4104821046\H,5.5774881822,5.9581868062,-3.3330642004\C,0.691928532
1,-1.820282757,-1.6011754349\H,-0.2884175234,-2.0248969067,-1.16371566
73\H,0.7848403422,-2.3981139677,-2.5235095853\N,0.7181562974,-0.400859
9441,-1.9447297045\C,1.4932500813,0.2387712102,-2.8534919192\C,1.15104
40992,1.5718596332,-2.7286285925\H,2.2049600758,-0.2730802824,-3.48367
```

74272\N,0.1880635535,1.6713024436,-1.765647119\N,-0.0782535517,0.48036  
80709,-1.296097853\H,4.2432600719,1.7070960304,-3.5463596552\O,4.73958  
77381,0.9790186733,-3.9744573389\C,5.2165605574,0.0936145009,-2.960165  
848\C,6.6320076797,0.5139847685,-2.5489304793\C,5.1573565022,-1.349928  
2208,-3.4889987864\H,4.5711065397,0.1425025596,-2.0750373471\O,7.10166  
46037,-0.4068379485,-1.5787134165\H,7.286701847,0.5262531537,-3.437042  
1471\H,6.6010862869,1.5305888089,-2.1277102066\O,4.8205602238,-2.20291  
78016,-2.3986776947\H,6.1221354153,-1.6503901622,-3.92256228\H,4.39574  
49362,-1.4136751876,-4.2808355019\C,8.3098653862,-0.0295998274,-0.9223  
436334\C,5.3603912666,-3.5218424385,-2.4275756896\H,9.1786209376,-0.16  
16166811,-1.5836997356\H,8.253854801,1.0316275393,-0.6334278921\C,8.45  
9458429,-0.9018631853,0.2814172895\C,5.4590365039,-4.0175809968,-1.020  
1272287\H,6.3618137946,-3.5088346772,-2.8782141924\H,4.7199210246,-4.1  
86129722,-3.0268251379\C,7.6638390498,-0.9522346589,1.4107621216\N,9.4  
050287229,-1.8813254684,0.3785107248\C,6.5536034708,-4.0441194532,-0.1  
793873668\N,4.3817698408,-4.4613893106,-0.3086644879\N,8.1794811828,-1  
.9709989477,2.1389443921\H,6.7832453472,-0.3938541344,1.7062664516\N,9  
.2419245797,-2.5296473233,1.5022624685\N,6.0705607922,-4.5077009803,0.  
9991806293\H,7.5880792697,-3.7667829203,-0.318737011\N,4.7491971911,-4  
.7530419553,0.9126478076\C,7.7074576308,-2.5238487492,3.400333452\C,6.  
7373134272,-4.6502542092,2.2900165962\C,6.4826363037,-3.4394270408,3.2  
348091391\H,8.5373772806,-3.0872992669,3.8347599494\H,7.4511165156,-1.  
7037948613,4.0754039402\H,7.8030159245,-4.8021561683,2.1010026082\H,6.  
3366305613,-5.5508384188,2.7605960101\H,5.6424609778,-2.8555440384,2.8  
378659668\O,6.2000848997,-3.8855134356,4.559979747\H,5.2779217485,-4.1  
838542578,4.6035308089\Version=EM64L-G03RevE.01\State=1-A\HF=-2194.89  
65361\RMSE=6.529e-10\RMSF=1.297e-05\ZeroPoint=0.6519767\Thermal=0.6925  
633.

## Dimer 6a

1\1\GINC-NODE20\Freq\RB3LYP\6-31+G(d)\C24H36N12O8\PRAJWAL\22-Nov-2011\  
1\#\# freq=norman b3lyp/6-31+g(d) pop=nbo\Dimer\_pseudo\_C2\_symmetric\_r  
\_freq.gjf\0,1\C\H,1,B1\H,1,B2,2,A1\N,1,B3,3,A2,2,D1,0\C,4,B4,1,A3,3,D  
2,0\N,4,B5,1,A4,5,D3,0\C,5,B6,4,A5,1,D4,0\N,7,B7,5,A6,4,D5,0\C,7,B8,5,  
A7,4,D6,0\H,9,B9,7,A8,5,D7,0\H,9,B10,7,A9,5,D8,0\O,9,B11,7,A10,5,D9,0\  
C,12,B12,9,A11,7,D10,0\C,8,B13,7,A12,5,D11,0\H,13,B14,12,A13,9,D12,0\H  
,13,B15,12,A14,9,D13,0\C,13,B16,12,A15,9,D14,0\H,14,B17,8,A16,7,D15,0\  
H,14,B18,8,A17,7,D16,0\H,17,B19,13,A18,12,D17,0\O,17,B20,13,A19,12,D18  
,0\H,21,B21,17,A20,13,D19,0\N,9,B22,7,A21,5,D20,0\C,23,B23,9,A22,7,D21  
,0\C,24,B24,23,A23,9,D22,0\H,24,B25,23,A24,9,D23,0\N,25,B26,24,A25,23,  
D24,0\N,27,B27,25,A26,24,D25,0\O,1,B28,5,A27,4,D26,0\H,7,B29,5,A28,4,D  
27,0\C,23,B30,9,A29,7,D28,0\H,31,B31,23,A30,9,D29,0\C,29,B32,1,A31,5,D  
30,0\H,33,B33,29,A32,1,D31,0\H,33,B34,29,A33,1,D32,0\C,33,B35,29,A34,1  
,D33,0\O,36,B36,33,A35,29,D34,0\H,37,B37,36,A36,33,D35,0\H,31,B38,23,A  
37,9,D36,0\H,36,B39,33,A38,29,D37,0\O,28,B40,27,A39,25,D38,0\C,41,B41,  
28,A40,27,D39,0\H,41,B42,28,A41,27,D40,0\C,42,B43,41,A42,28,D41,0\C,42  
,B44,41,A43,28,D42,0\H,42,B45,41,A44,28,D43,0\O,44,B46,42,A45,41,D44,0\  
H,44,B47,42,A46,41,D45,0\H,44,B48,42,A47,41,D46,0\N,45,B49,42,A48,41,  
D47,0\H,45,B50,42,A49,41,D48,0\H,45,B51,42,A50,41,D49,0\C,47,B52,44,A5  
1,42,D50,0\C,50,B53,45,A52,42,D51,0\N,50,B54,45,A53,42,D52,0\H,53,B55,  
47,A54,44,D53,0\H,53,B56,47,A55,44,D54,0\C,53,B57,47,A56,44,D55,0\C,54  
,B58,50,A57,45,D56,0\H,54,B59,50,A58,45,D57,0\N,55,B60,50,A59,45,D58,0\  
\N,58,B61,53,A60,47,D59,0\C,58,B62,53,A61,47,D60,0\C,59,B63,54,A62,50,  
D61,0\N,62,B64,58,A63,53,D62,0\N,65,B65,62,A64,58,D63,0\H,63,B66,58,A6  
5,53,D64,0\H,64,B67,59,A66,54,D65,0\H,64,B68,59,A67,54,D66,0\O,64,B69,  
59,A68,54,D67,0\C,66,B70,65,A69,62,D68,0\C,70,B71,64,A70,59,D69,0\C,72  
,B72,70,A71,64,D70,0\H,71,B73,66,A72,65,D71,0\H,71,B74,66,A73,65,D72,0\  
\H,72,B75,70,A74,64,D73,0\H,72,B76,70,A75,64,D74,0\H,73,B77,72,A76,70,  
D75,0\O,73,B78,72,A77,70,D76,0\H,79,B79,73,A78,72,D77,0\B1=1.10021221

\B2=1.09888648\B3=2.48833602\B4=1.36726818\B5=1.30530053\B6=1.38215084  
\B7=1.35260511\B8=4.30214766\B9=1.10064557\B10=1.10366157\B11=1.420492  
22\B12=1.41690496\B13=1.45863577\B14=1.10462764\B15=1.10132137\B16=1.5  
3111461\B17=1.09458569\B18=1.09390112\B19=1.09319461\B20=1.42875154\B2  
1=0.97226325\B22=3.63810583\B23=1.35633094\B24=1.37898513\B25=1.077690  
8\B26=1.36368887\B27=1.31016774\B28=1.43748363\B29=1.08203276\B30=1.46  
016036\B31=1.09291651\B32=1.41081346\B33=1.1012954\B34=1.10743102\B35=  
1.53137059\B36=1.42631841\B37=0.97179327\B38=1.09469777\B39=1.09364917  
\B40=4.85283351\B41=1.42877217\B42=0.97226357\B43=1.5311154\B44=1.5430  
893\B45=1.0931874\B46=1.41688252\B47=1.10132093\B48=1.10463249\B49=1.4  
5864124\B50=1.09390399\B51=1.09458381\B52=1.42046244\B53=1.35263024\B5  
4=1.35289217\B55=1.10366424\B56=1.10065545\B57=1.49672671\B58=1.382137  
74\B59=1.08202335\B60=1.30529841\B61=1.36369599\B62=1.37896467\B63=1.4  
8969745\B64=1.31015786\B65=1.35065485\B66=1.0776791\B67=1.09888783\B68  
=1.10021409\B69=1.43746108\B70=1.46015666\B71=1.41080839\B72=1.5313799  
4\B73=1.09469889\B74=1.09291528\B75=1.10742857\B76=1.10129654\B77=1.09  
365087\B78=1.42631912\B79=0.97179506\A1=108.5838698\A2=81.65558932\A3=  
30.84380653\A4=140.01639553\A5=108.20859176\A6=104.21280732\A7=108.877  
19156\A8=98.86786491\A9=144.54468286\A10=37.04009921\A11=112.51165582\  
A12=128.93931639\A13=109.68462268\A14=110.68660214\A15=110.62393862\A1  
6=107.33502609\A17=107.93435125\A18=109.66900906\A19=108.51521642\A20=  
109.25584572\A21=76.0689968\A22=33.03903101\A23=104.46686904\A24=123.0  
3595555\A25=108.17936878\A26=109.27918951\A27=108.89093244\A28=134.116  
76851\A29=162.83422766\A30=106.87867008\A31=114.08841938\A32=111.67842  
037\A33=110.11187581\A34=108.79281892\A35=109.64865407\A36=109.5692687  
2\A37=107.8176437\A38=109.57347015\A39=106.07574811\A40=65.21801936\A4  
1=44.05789116\A42=108.51760236\A43=108.9086983\A44=105.37162174\A45=11  
0.62384138\A46=108.10929368\A47=109.51555053\A48=114.13222082\A49=107.  
44283115\A50=110.93760185\A51=112.51187903\A52=128.93903364\A53=120.02  
566609\A54=109.54638796\A55=110.69940933\A56=108.99044919\A57=104.2125  
3582\A58=121.63269364\A59=107.3287107\A60=121.69012157\A61=130.1260285  
5\A62=130.6313963\A63=109.27784212\A64=107.31310709\A65=132.41077348\A  
66=108.63117457\A67=111.99441629\A68=108.88725213\A69=119.3143359\A70=  
114.09266808\A71=108.79075567\A72=107.81950348\A73=106.87334187\A74=11  
0.11224203\A75=111.67913315\A76=109.57545973\A77=109.64653046\A78=109.  
56845123\D1=129.89381067\D2=-163.99768205\D3=-3.63180634\D4=-177.17977  
203\D5=-0.05309769\D6=85.67451845\D7=146.69617961\D8=-75.15682295\D9=-  
100.51651294\D10=-131.30219653\D11=179.57316553\D12=62.38048163\D13=-5  
6.89713968\D14=-176.70233032\D15=9.27760327\D16=126.54921246\D17=60.91  
467631\D18=175.53455437\D19=61.99635285\D20=33.100819\D21=-51.65716675  
\D22=-0.39296497\D23=176.62516789\D24=-0.10013833\D25=-0.09561693\D26=  
-102.94348171\D27=177.43619914\D28=-44.47682141\D29=-147.482629\D30=16  
8.66748196\D31=54.96562866\D32=-64.48452939\D33=175.52407386\D34=175.8  
3281789\D35=-53.82091442\D36=-30.63424867\D37=-69.44142951\D38=142.242  
87668\D39=-10.41152691\D40=171.42819548\D41=-63.32027999\D42=62.921552  
09\D43=179.27522862\D44=-175.51248111\D45=-54.1690768\D46=63.47378876\  
D47=163.17008008\D48=43.5335323\D49=-75.43188806\D50=176.77218976\D51=  
114.14492647\D52=-65.67451968\D53=-63.9650822\D54=54.45475041\D55=174.  
31359694\D56=-179.57964335\D57=-1.67935214\D58=179.37215699\D59=-154.3  
9353555\D60=24.95205868\D61=176.85368182\D62=179.56944852\D63=-0.25357  
881\D64=-2.69539481\D65=166.81586265\D66=46.8892656\D67=-73.5152315\D6  
8=-177.82244183\D69=-168.65759514\D70=-175.58820516\D71=-156.6480586\  
D72=-39.79956633\D73=64.42161352\D74=-55.02909915\D75=69.43946771\D76=-  
175.83617971\D77=53.86454464\\Version=EM64L-G03RevE.01\State=1-A\HF=-2  
194.8851944\RMSD=9.970e-09\RMSF=5.237e-06\ZeroPoint=0.6503742\Thermal=  
0.6929244.