

Supplementary Information



Figure S1 (a) the beakers with AgNO_3 , $\text{Pb}(\text{CH}_3\text{COO})_2 \cdot 3\text{H}_2\text{O}$, $\text{K}(\text{SbO})\text{C}_4\text{H}_4\text{O}_6 \cdot 0.5\text{H}_2\text{O}$, Na_2TeO_3 dissolved in mixture solvents of ethylene glycol and formamide, respectively. (b) the beakers with N_2H_4 added at the same time. (c) the beakers with time prolonging.

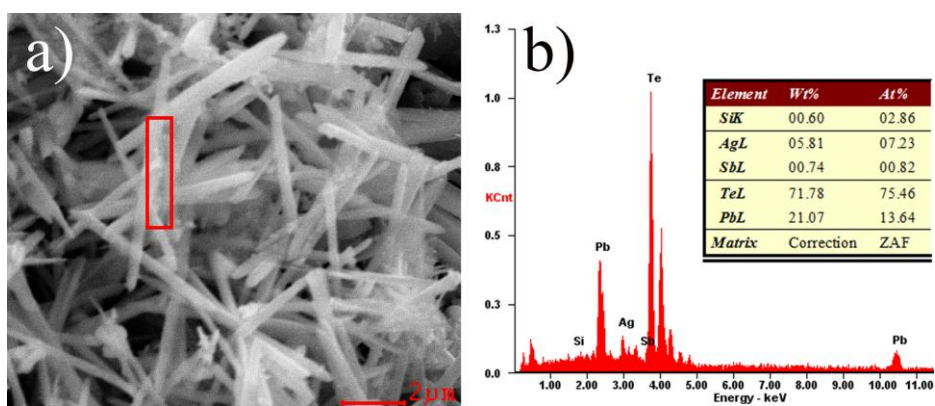


Figure S2 (a) SEM image of particles prepared for 1 h. (b) EDS spectrum of particles prepared for 1 h, the inset is the atomic ratio of each elementals.

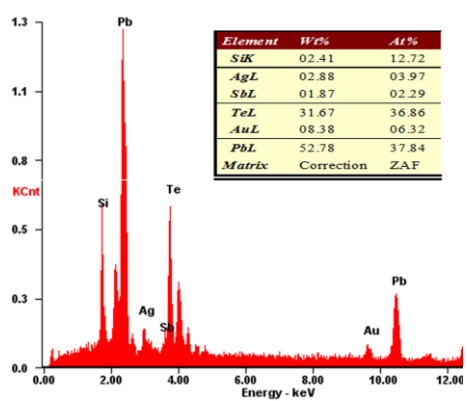


Figure S3 EDS spectrum of as-prepared $\text{AgPb}_{10}\text{SbTe}_{12}$ rods.