

Supporting Information

Diastereoselective vinylaluminum for the synthesis of pericosine A, B and C

Long-Shiang Li and Duen-Ren Hou*

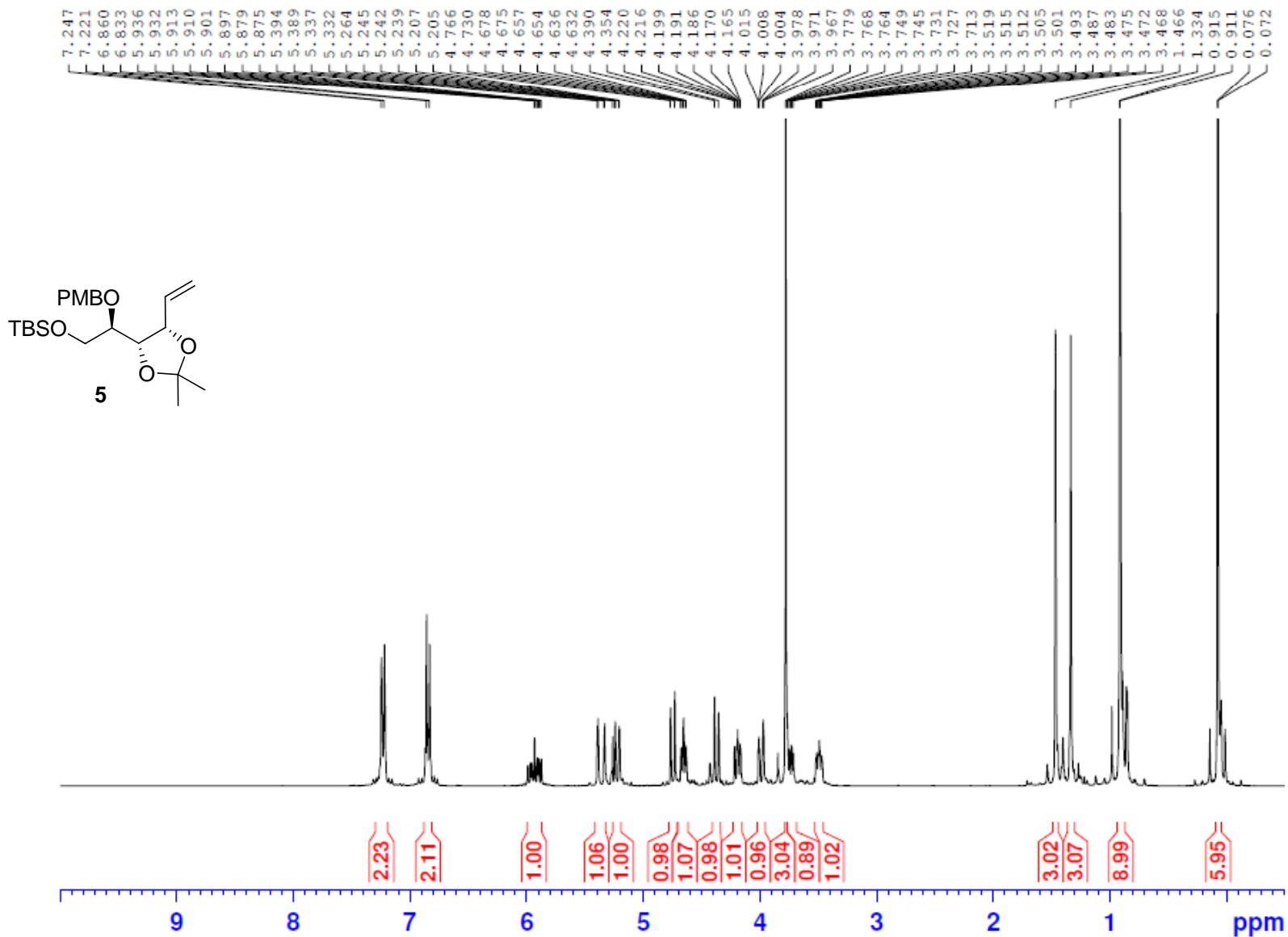
Department of Chemistry, National Central University, Jhong-Li City, Taoyuan,
Taiwan 32001

drhou@ncu.edu.tw

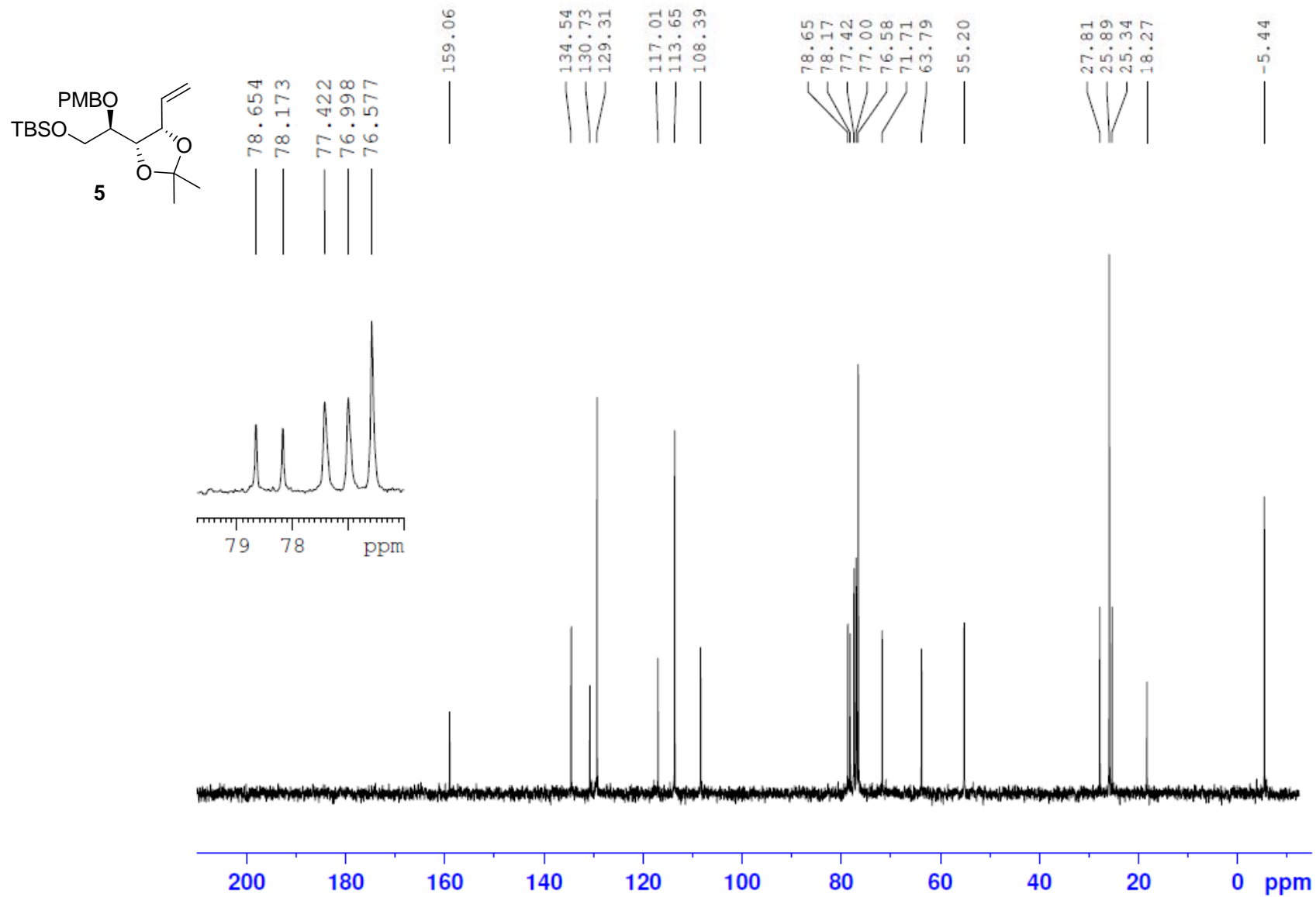
Table of Contents

¹ H NMR for the compound 5	3
¹³ C NMR for the compound 5	4
¹ H NMR for the compound 6	5
¹³ C NMR for the compound 6	6
¹ H NMR for the compound 7a	7
¹³ C NMR for the compound 7a	8
¹ H NMR for the compound 9	9
¹³ C NMR for the compound 9	10
¹ H NMR for the compound 10	11
¹³ C NMR for the compound 10	12
¹ H NMR for the compound 7b	13
¹³ C NMR for the compound 7b	14
¹ H NMR for the compound 11a	15
¹³ C NMR for the compound 11a	16
¹ H NMR for the compound 12a	17
¹³ C NMR for the compound 12a	18
¹ H NMR for the compound 11b+12b	19
¹³ C NMR for the compound 11b+12b	20
¹ H NMR for the compound 13	21
¹³ C NMR for the compound 13	22

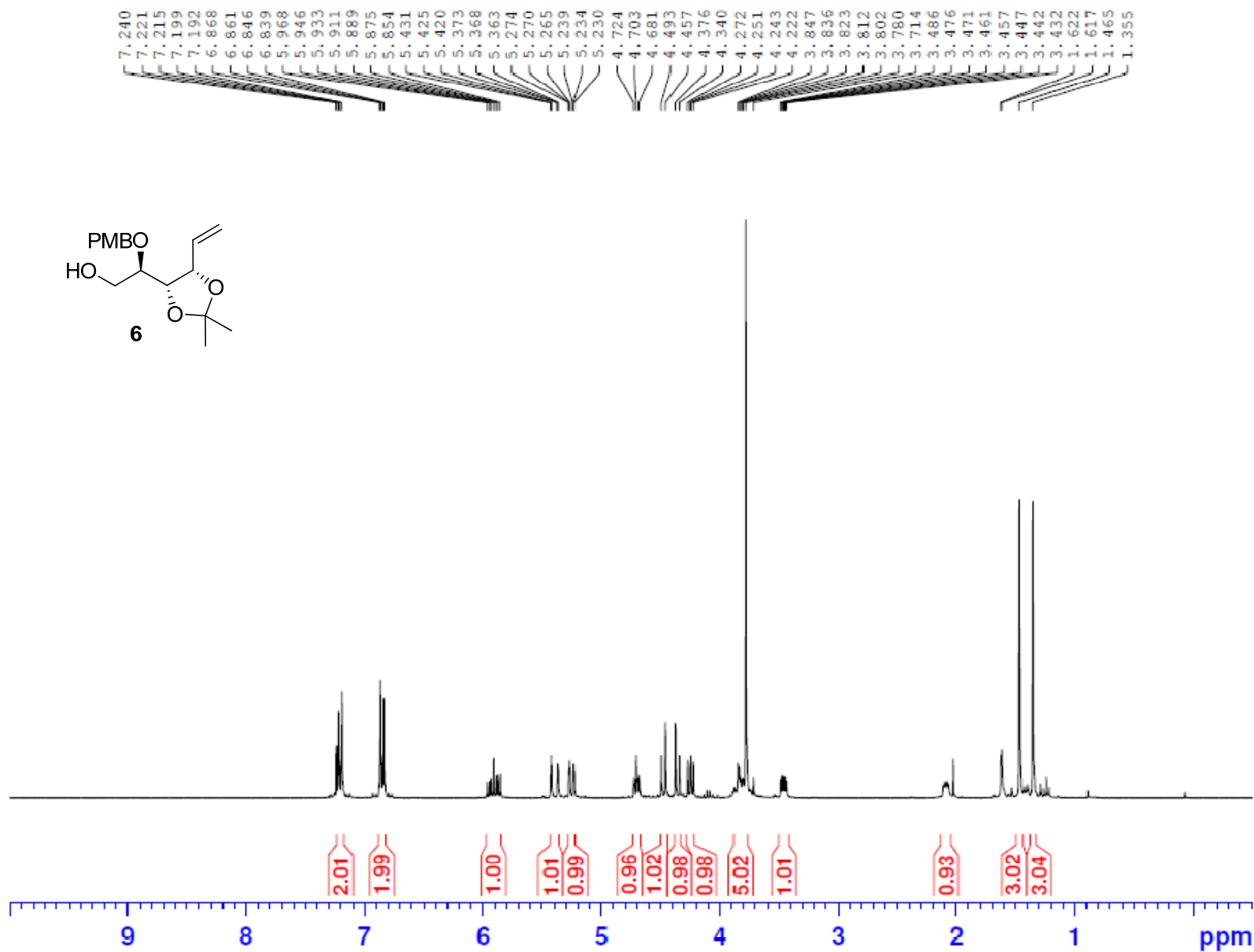
¹ H NMR for the compound 14	23
¹³ C NMR for the compound 14	24
¹ H NMR for the compound 15	25
¹³ C NMR for the compound 15	26
¹ H NMR for the compound 16	27
¹³ C NMR for the compound 16	28
¹ H NMR for the compound 2b	29
¹ H NMR (D ₂ O) for the compound 2b	30
¹³ C NMR for the compound 2b	31
¹ H NMR for the compound 2c	32
¹³ C NMR for the compound 2c	33
¹ H NMR for the compound 17	34
¹³ C NMR for the compound 17	35
¹ H NMR for the compound 18	36
¹³ C NMR for the compound 18	37



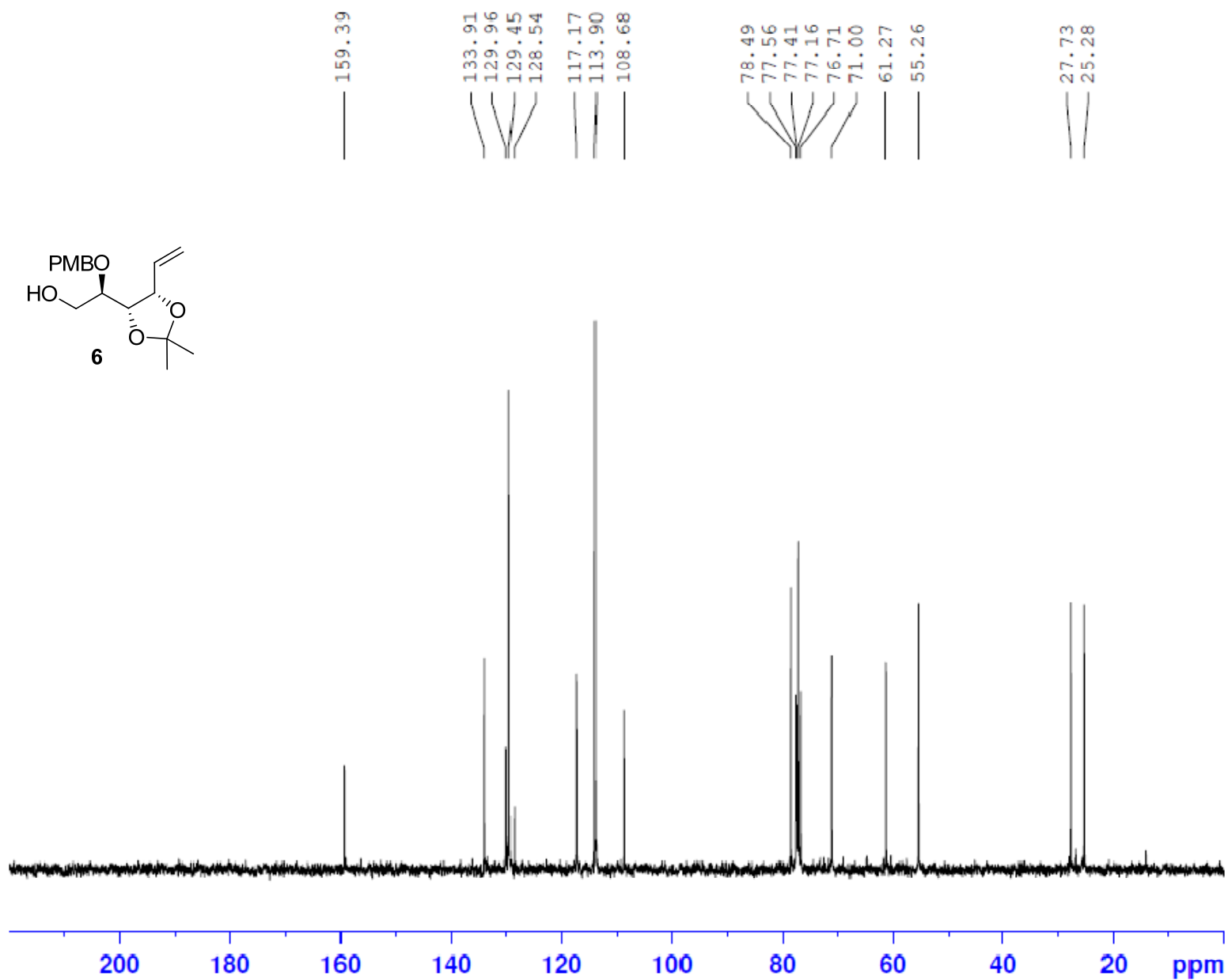
¹H NMR (300 MHz CDCl₃) of compound **5**



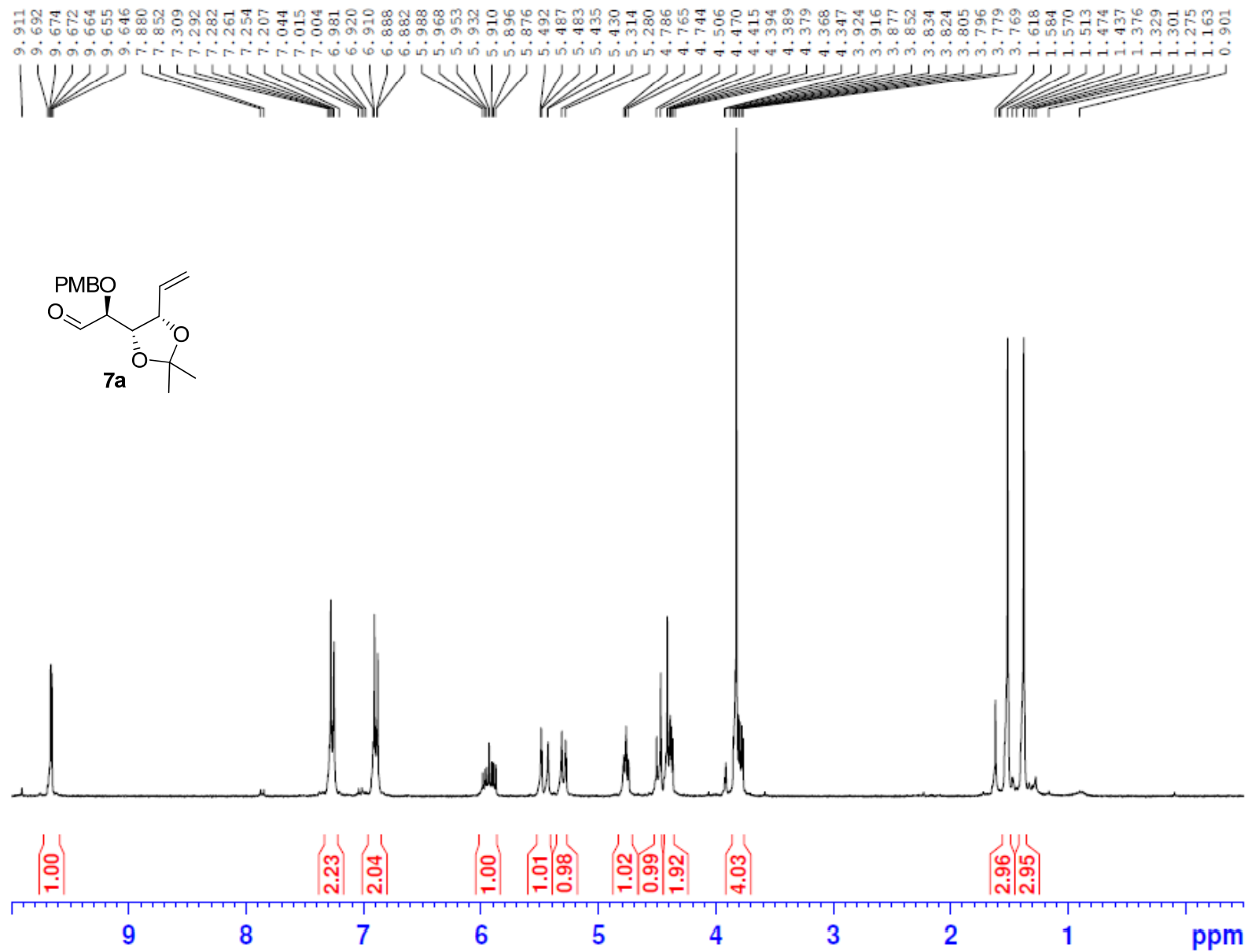
^{13}C NMR (75 MHz CDCl_3) of compound **5**



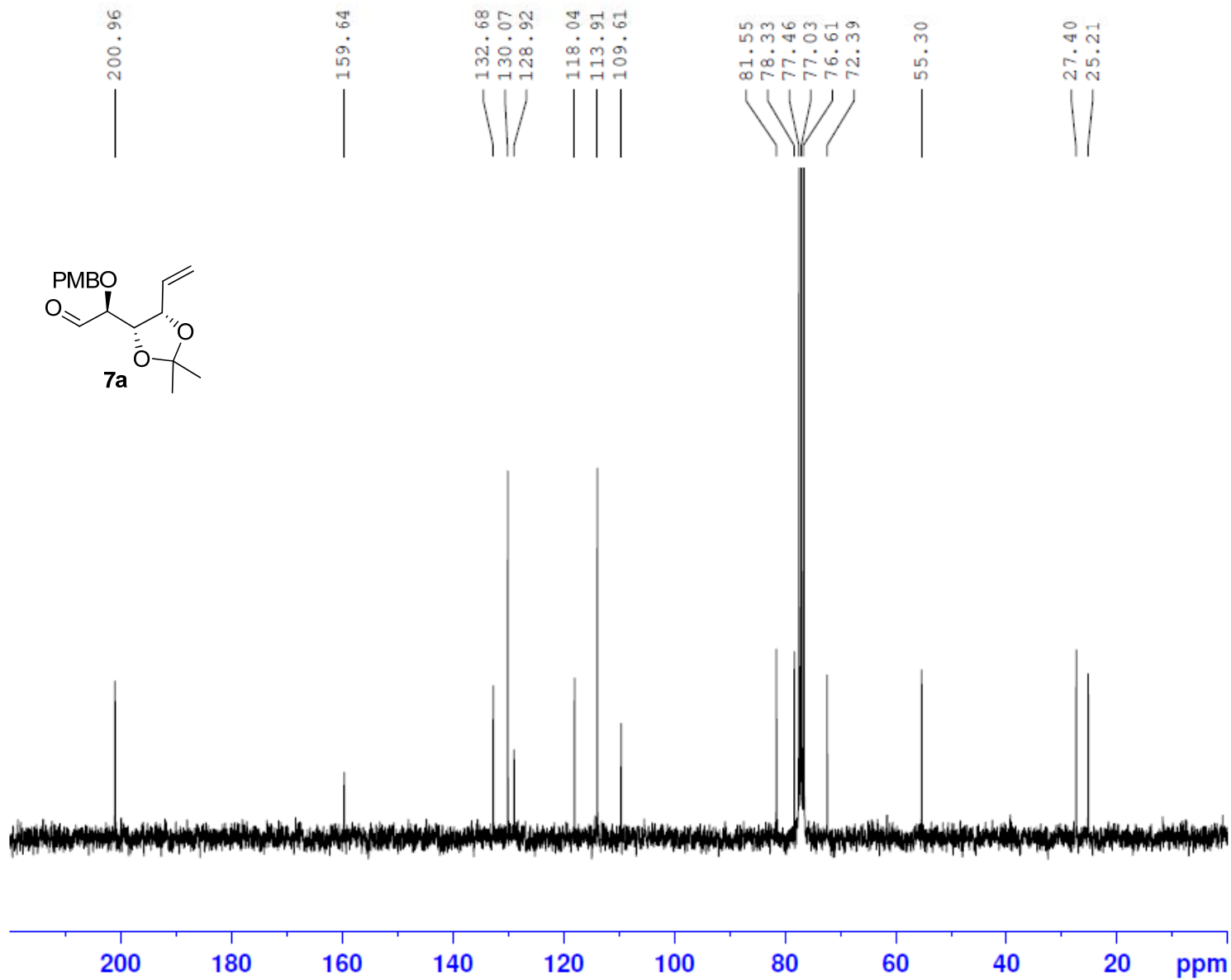
¹H NMR (300 MHz CDCl₃) of compound **6**



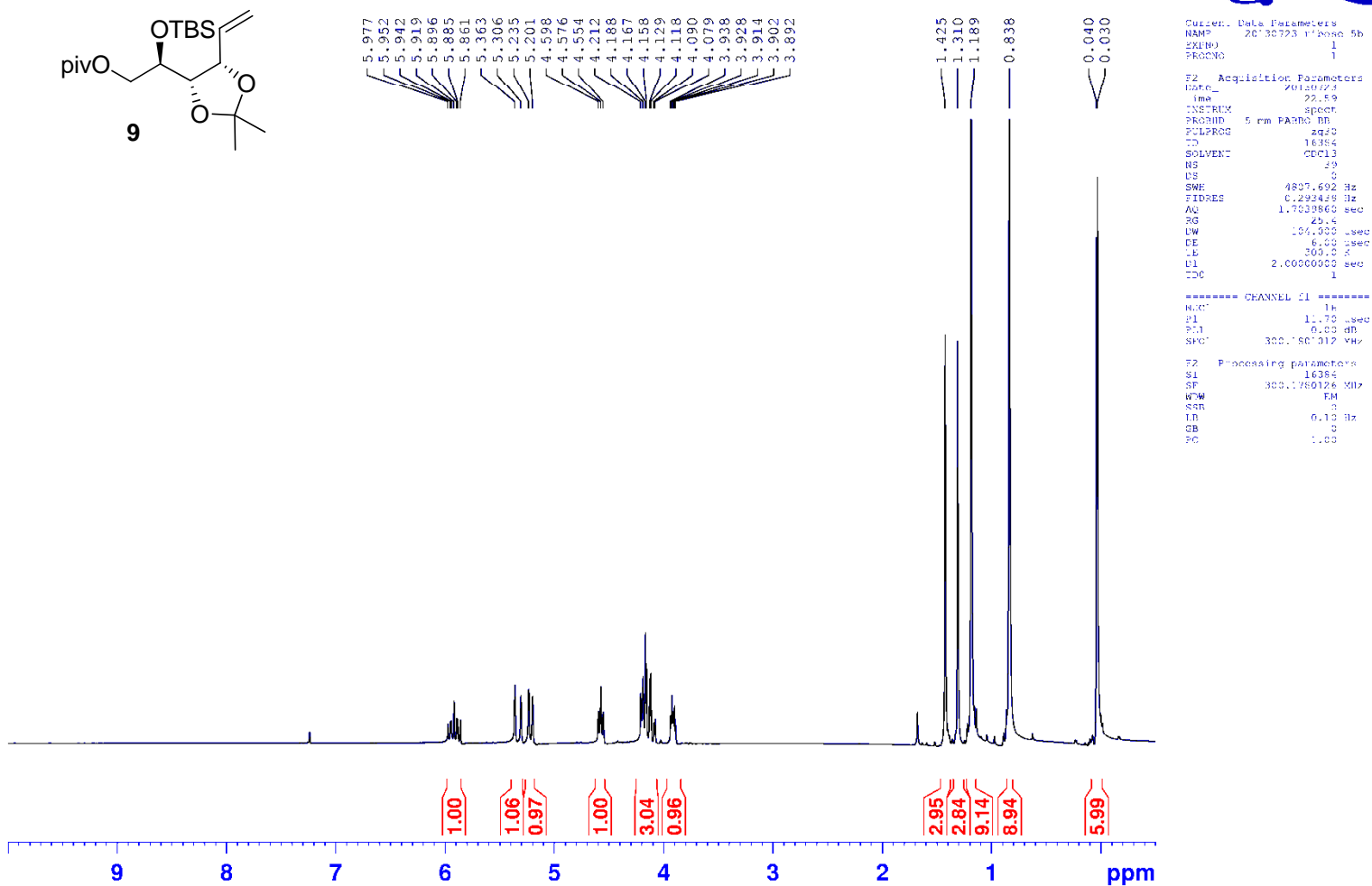
¹³C NMR (75 MHz CDCl₃) of compound **6**



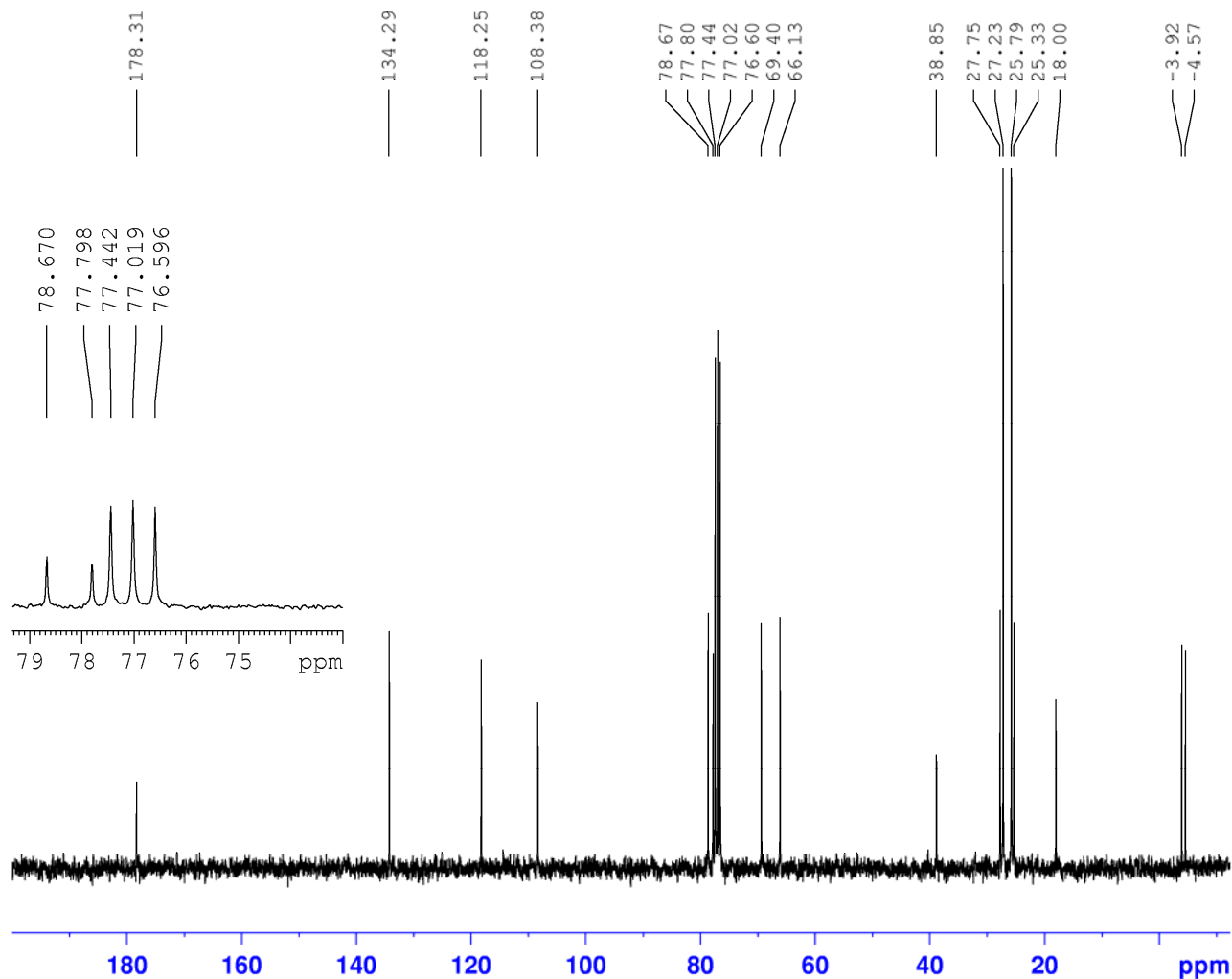
¹H NMR (300 MHz CDCl₃) of compound **7a**



^{13}C NMR (75 MHz CDCl_3) of compound **7a**



^1H NMR (300 MHz CDCl_3) of compound **9**



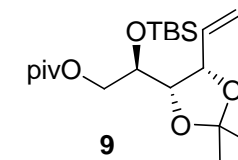
Current Data Parameters
NAME 20130723 ribose 5b c13
EXPNO 1
PROCNO 1

F2 - Acquisition Parameters
Date_ 20130723
Time 23.10
INSTRUM spect
PROBHD 5 mm F4BBO BB-
PULPROG zgpg30
TD 32768
SOLVENT CDCl3
NS 91
DS 0
SWH 19230.770 Hz
FIDRES 0.586877 Hz
AQ 0.8520180 sec
RG 203
DW 26.000 usec
DE 6.00 usec
TE 300.0 K
D1 2.0000000 sec
d11 0.0300000 sec
DELTA 1.8999998 sec
TDO 1

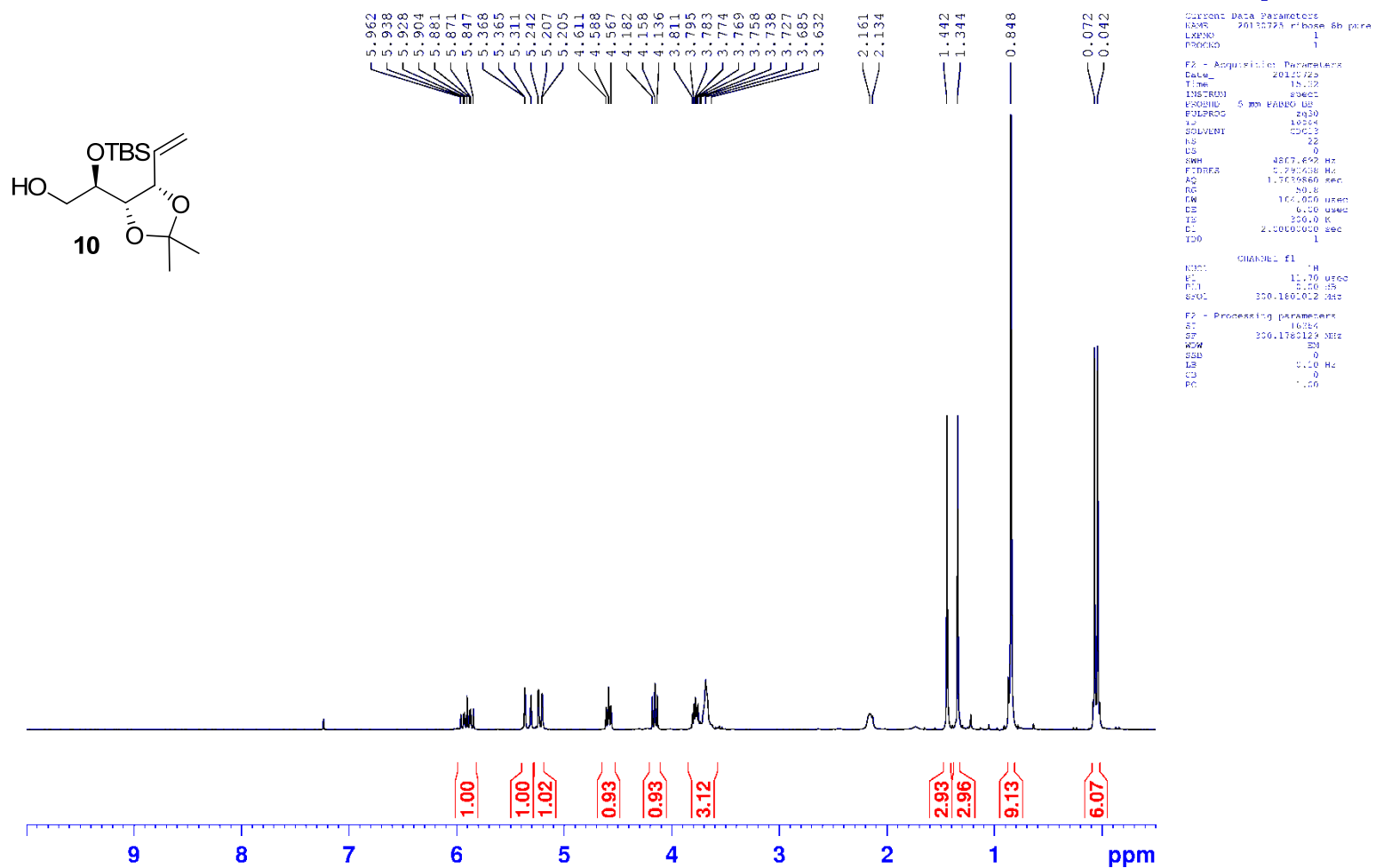
----- CHANNEL f1 -----
NUC1 13C
P1 9.85 usec
PL1 0.00 dB
SFO1 75.4884982 MHz

----- CHANNEL f2 -----
CPDPRG2 waltz16
NUC2 1H
PCPD2 90.00 usec
PL12 17.70 dB
PL13 20.70 dB
PL2 0.00 dB
SFO2 300.1792007 MHz

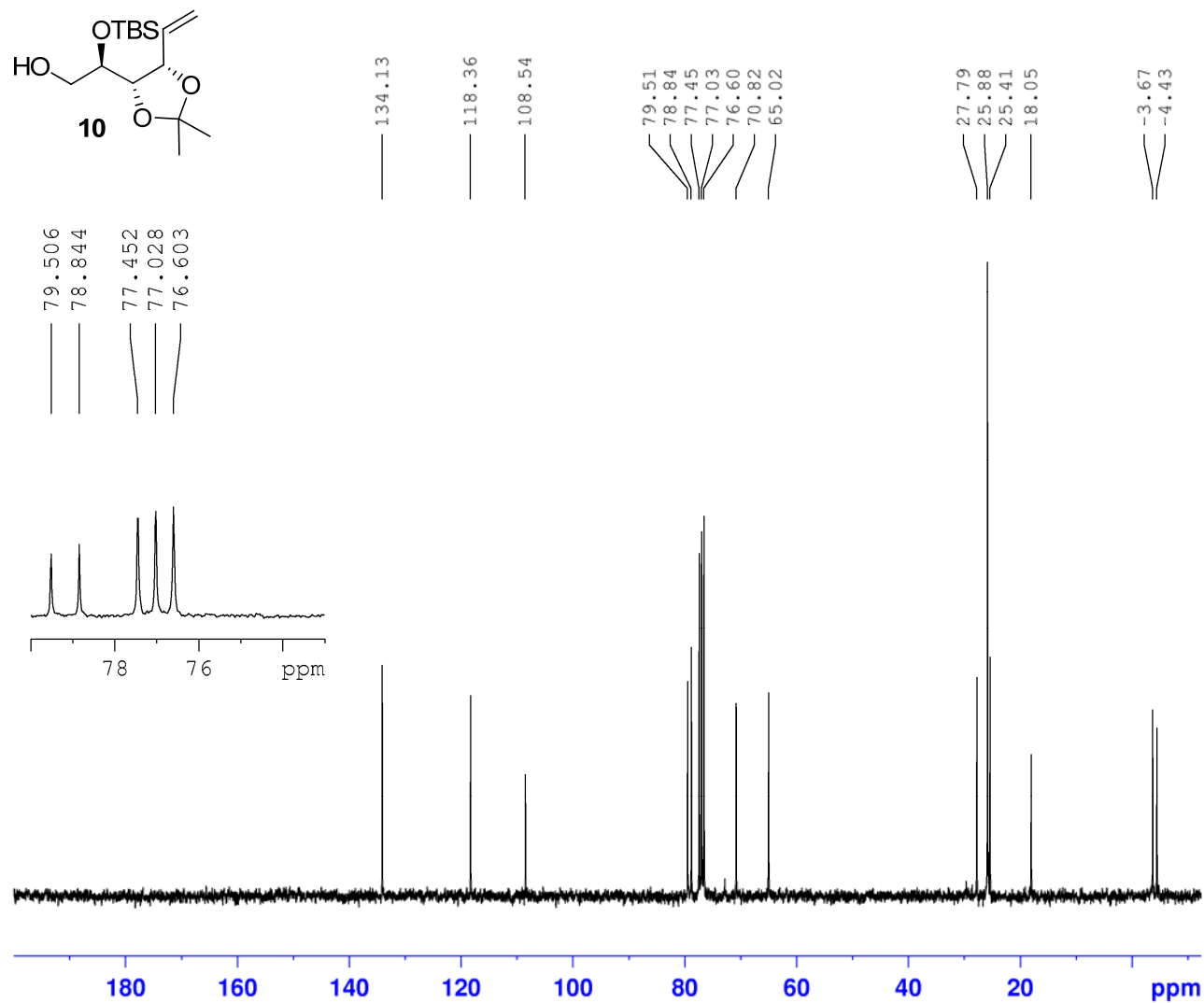
F2 - Processing parameters
SI 16384
SF 75.4798180 MHz
WDW EM
SSB 0
LB 2.00 Hz
GB 0
PC 1.00



^{13}C NMR (75 MHz CDCl_3) of compound 9



^1H NMR (300 MHz CDCl_3) of compound **10**



```
Current Data Parameters
NAME      20130725_ribose_6b_pure_C13
EXPNO    1
PROCNO   1

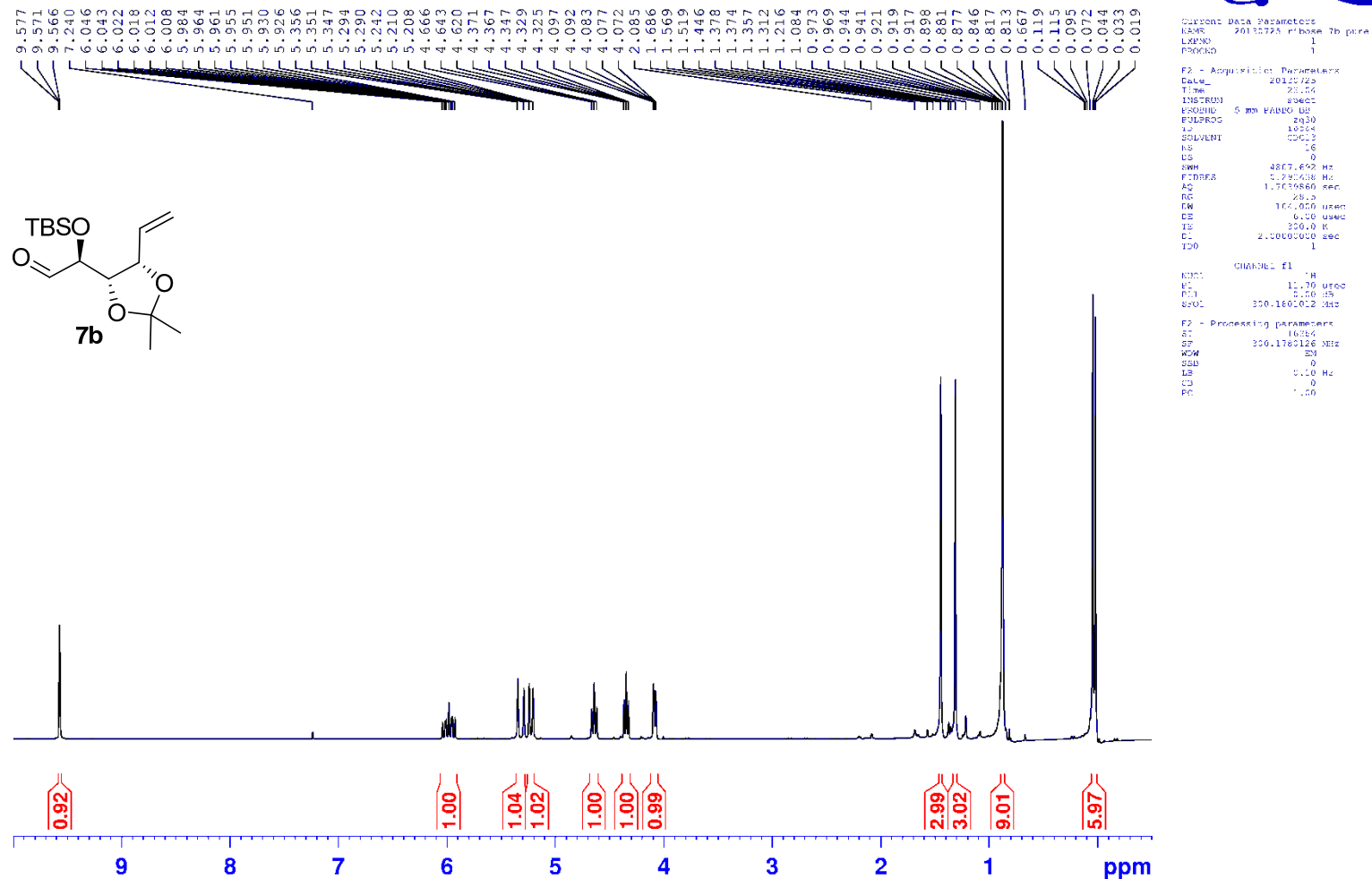
F2 - Acquisition Parameters
Date_    20130725
Time     15.35
INSTRUM spect
PROBHD   5 mm PABBO BB-
PULPROG zgpg30
TD       32768
SOLVENT  CDCl3
NS       202
DS       0
SWH      20000.000 Hz
FIDRES   0.619352 Hz
AQ       0.8192500 sec
RG       203
DW       25.000 usec
DE       6.00 usec
TE       300.0 K
D1       2.0000000 sec
d11      0.0300000 sec
DELTA   1.8999998 sec
TD0      1

===== CHANNEL f1 =====
NUC1     13C
P1       9.85 usec
PL1     0.00 dB
SFO1    75.4884982 MHz

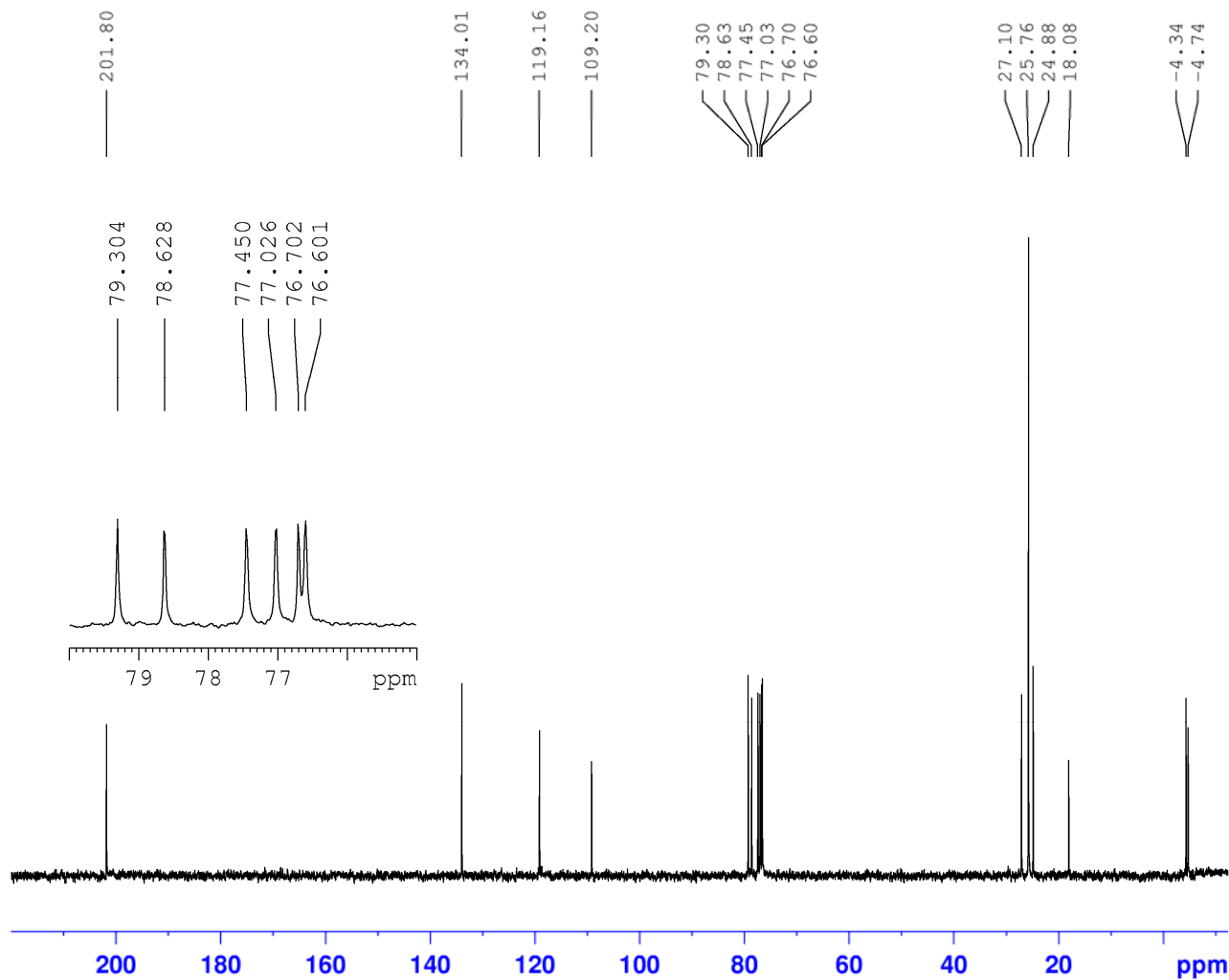
===== CHANNEL f2 =====
CPDPRG2  waltz16
NUC2     1H
PCPD2   90.00 usec
PL12    17.70 dB
PL13    20.70 dB
PL2     0.00 dB
SFO2    300.1792007 MHz

F2 - Processing parameters
SI       16384
SF       75.4798180 MHz
WUW      EM
SGB      0
LB       2.00 Hz
GB       0
PC       1.00
```

¹³C NMR (75 MHz CDCl₃) of compound **10**



¹H NMR (300 MHz CDCl₃) of compound **7b**



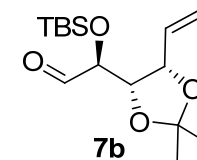
```
Current Data Parameters
NAME      20130725_ribose_7b_pure_C13
EXPNO    1
PROCNO   1

F2 - Acquisition Parameters
Date_    20130725
Time     23.13
INSTRUM spect
PROBHD   5 mm PABBO BB-
PULPROG zgpg30
TD       32768
SOLVENT  CDCl3
NS       122
DS       0
SWH      19230.770 Hz
FIDRES   0.34667 Hz
AQ       0.6520180 sec
RG       203
DW       26.000 usec
DE       6.00 usec
TE       300.0 K
D1       2.00000000 sec
d11      0.03000000 sec
DELTA    1.89999998 sec
TD0      1

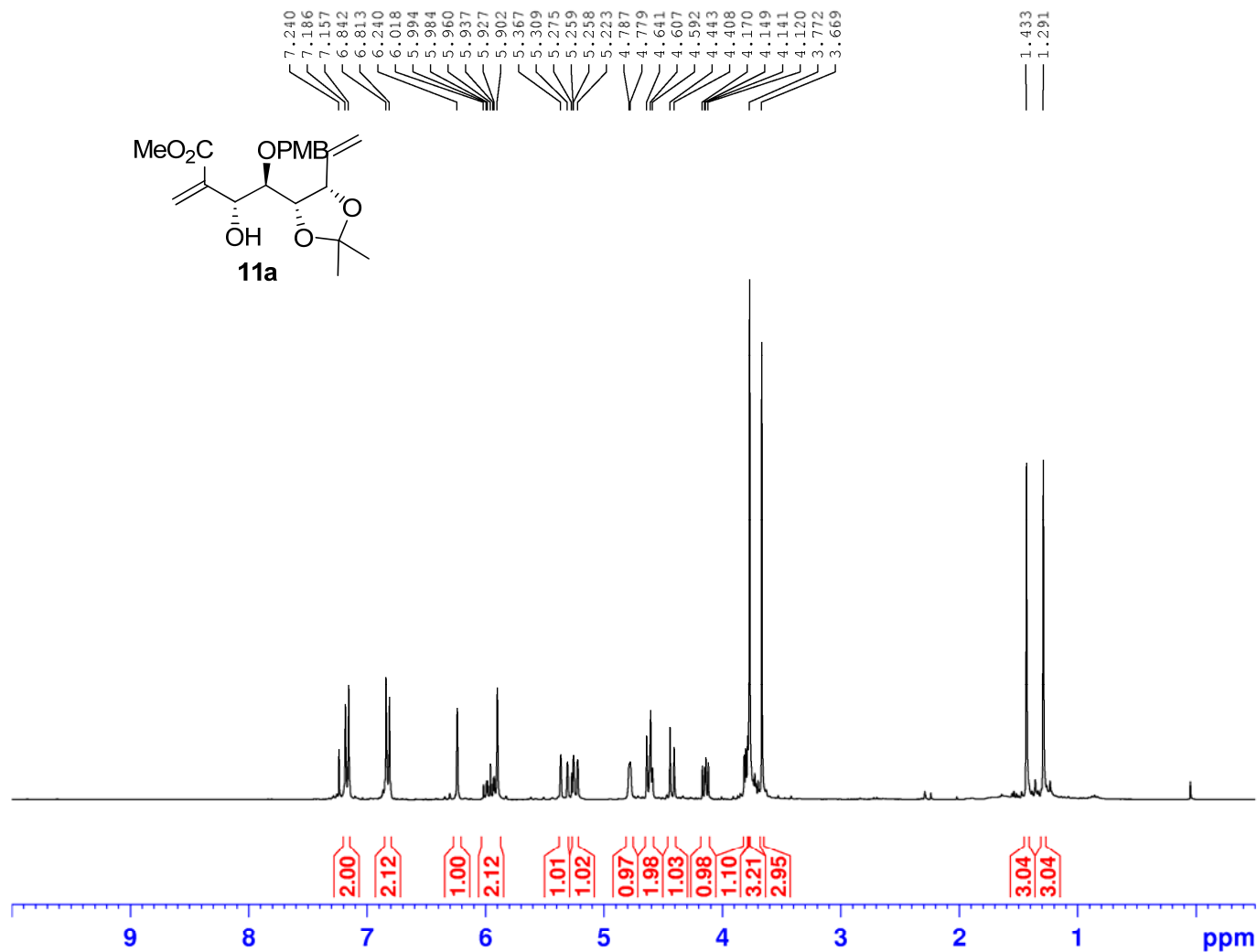
===== CHANNEL f1 =====
NUC1     13C
P1       9.85 usec
PL1      0.00 dB
SFO1     75.4884982 MHz

===== CHANNEL f2 =====
CPDPRG2  waltz16
NUC2     1H
PCPD2    90.00 usec
PL12     17.70 dB
PL13     20.70 dB
PL2      0.00 dB
SFO2     300.1792007 MHz

F2 - Processing parameters
SI       16384
SF       75.4798180 MHz
WDW      EM
SSB      0
LB       2.00 Hz
GB       0
PC       1.00
```



^{13}C NMR (75 MHz CDCl_3) of compound **7b**



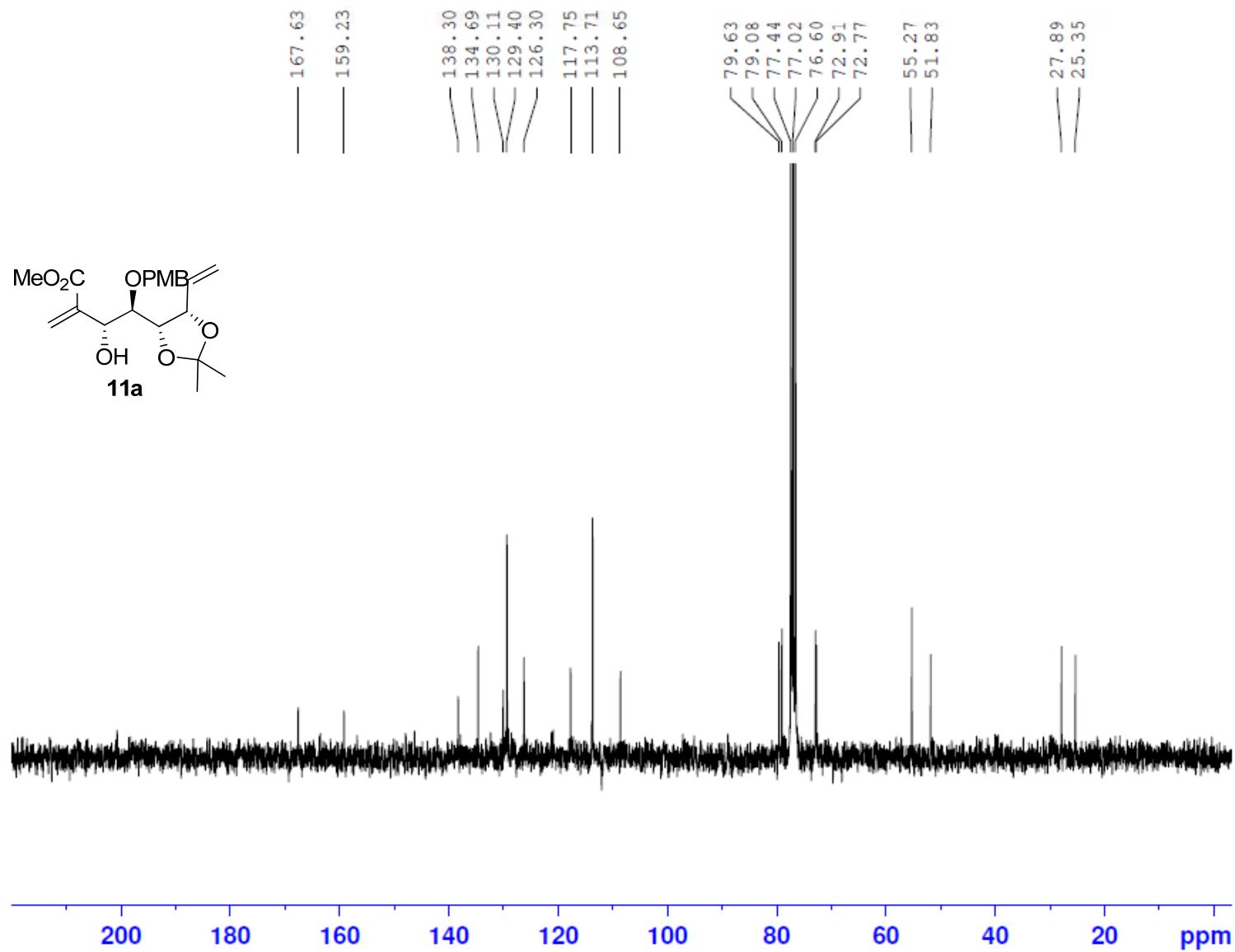
```
Current Data Parameters
NAME      20130723 r1Dose 6a
EXPNO     1
PROCNO    1

F2 - Acquisition Parameters
Date_     20130723
Time      11.36
INSTRUM   spect
PROBHD    5 mm PABBO BB-
PULPROG   zg30
TD         16384
SOLVENT   CDCl3
NS         132
DS         0
SWH        4807.692 Hz
FIDRES     0.293438 Hz
AQ         1.7039860 sec
RG         161
DW         104.000 usec
DE         6.00 usec
TE         300.0 K
D1         2.00000000 sec
TD0        1

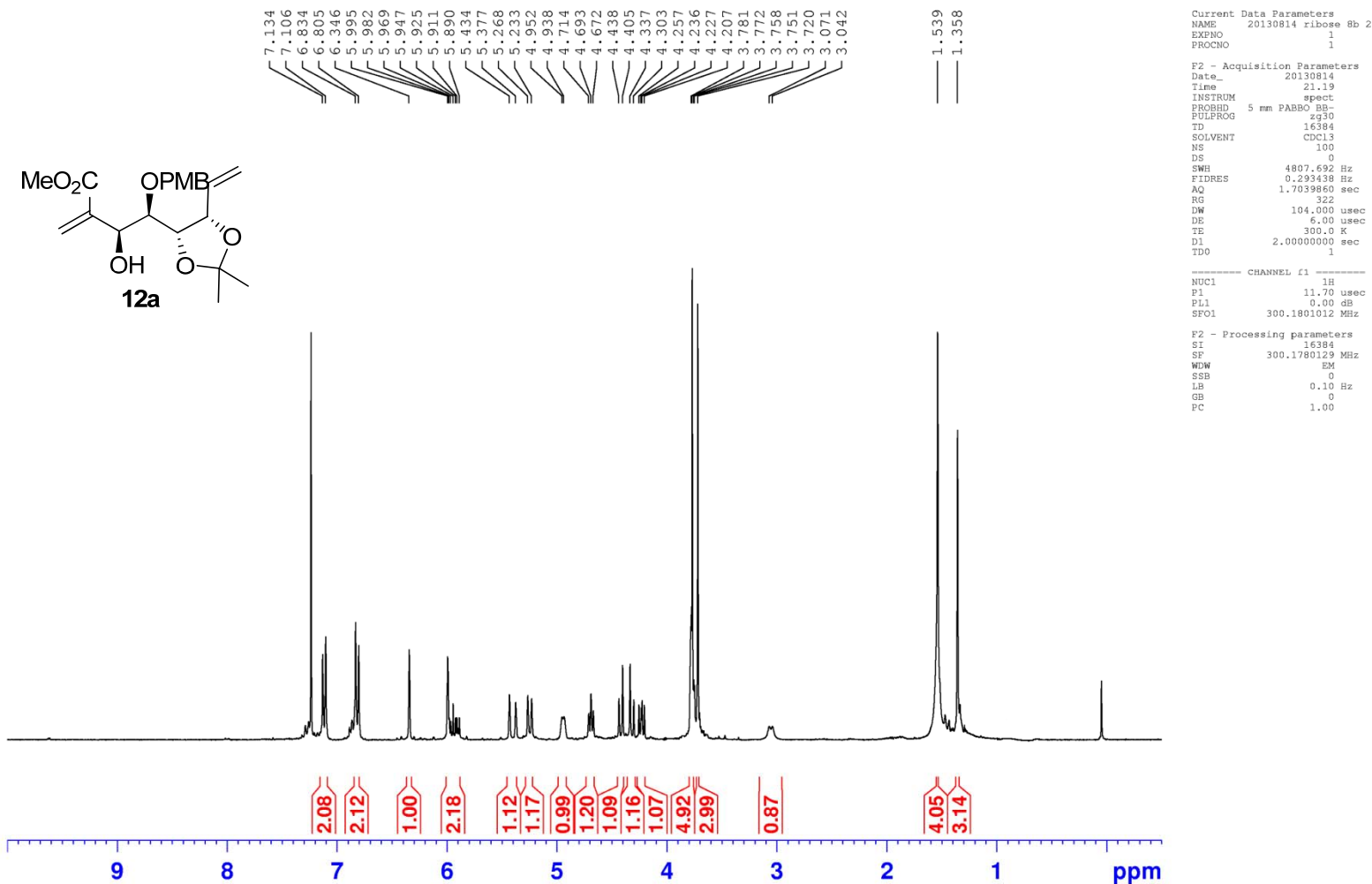
----- CHANNEL f1 -----
NUC1       1H
P1         11.70 usec
Pl1        0.00 dB
SFO1       300.1801012 MHz

F2 - Processing parameters
SI         16384
SF         300.1780129 MHz
WDW        EM
SSB        0
LB         0.10 Hz
GB         0
PC         1.00
```

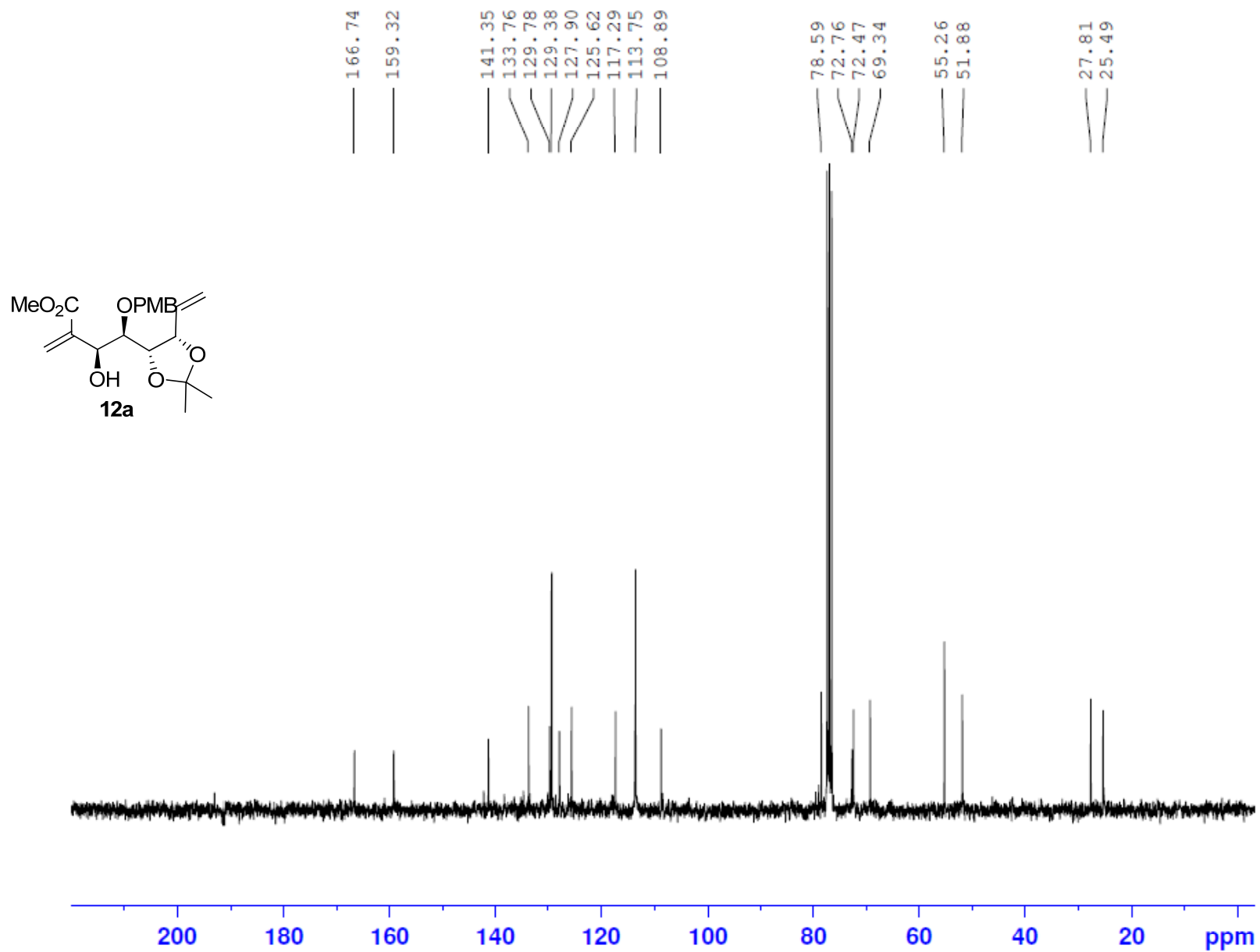
¹H NMR (300 MHz CDCl₃) of compound **11a**



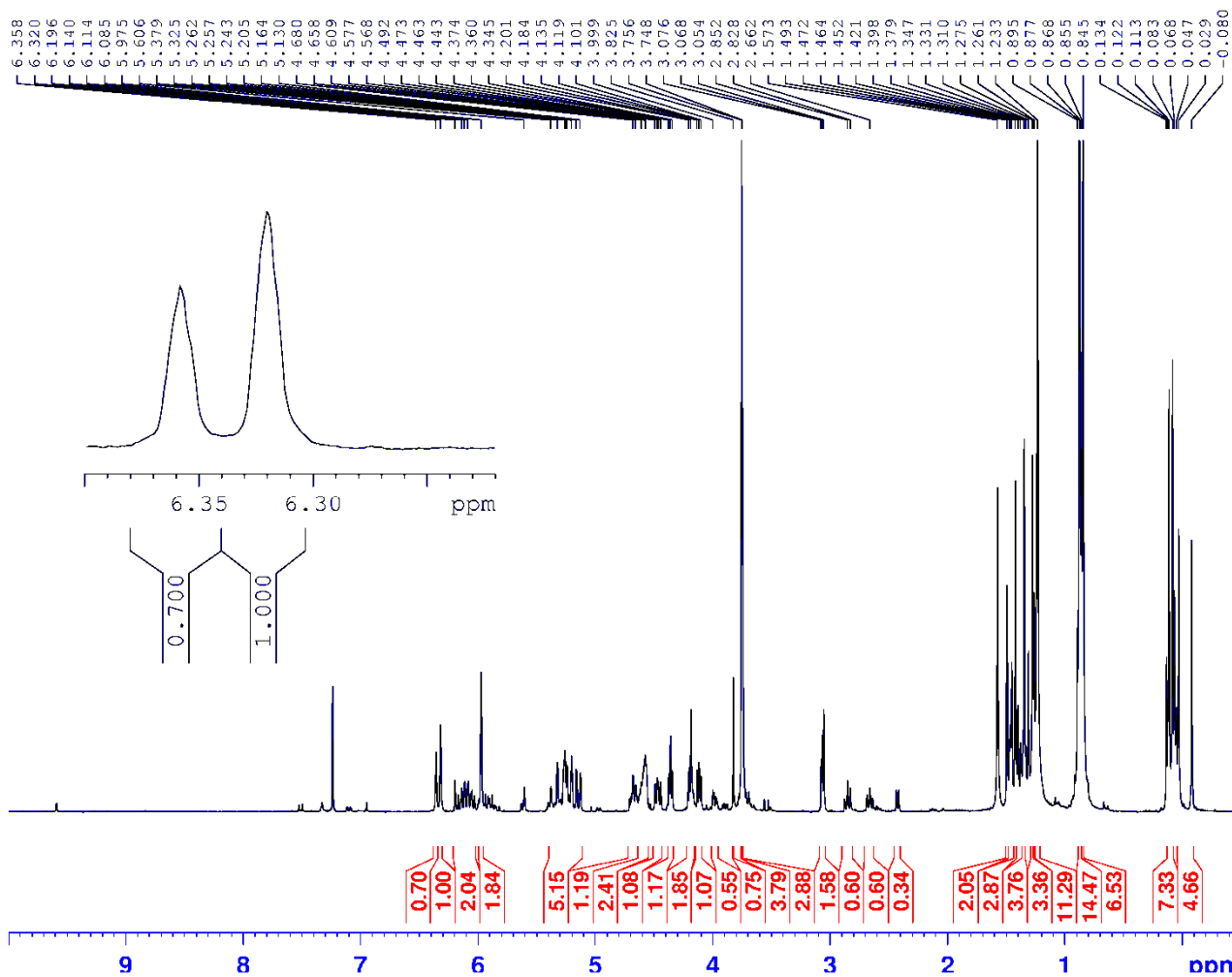
¹³C NMR (75 MHz CDCl₃) of compound **11a**



¹H NMR (300 MHz CDCl₃) of compound **12a**

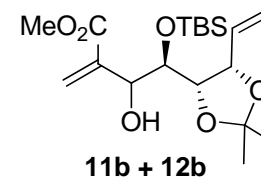


¹³C NMR (75 MHz CDCl₃) of compound **12a**

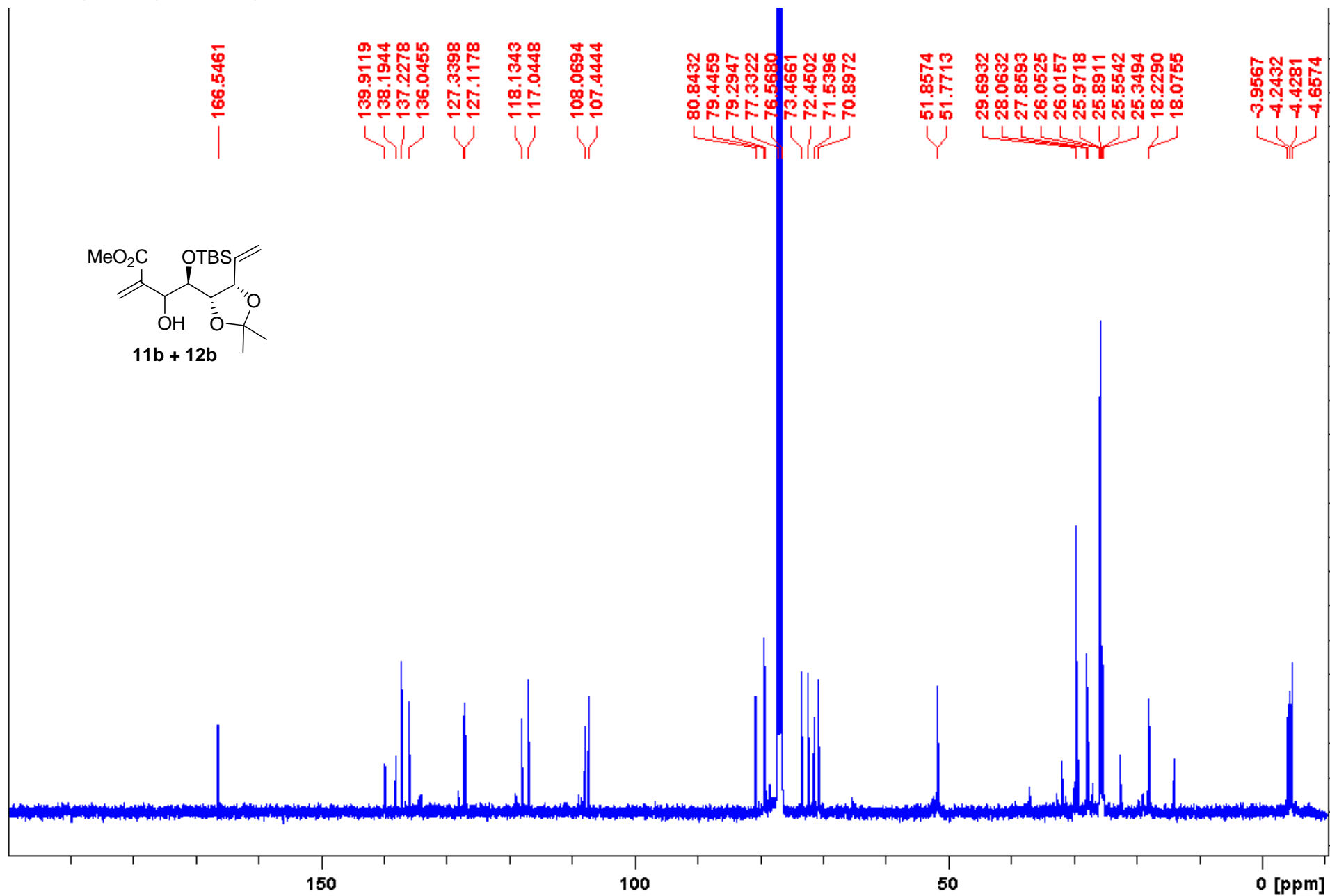


```

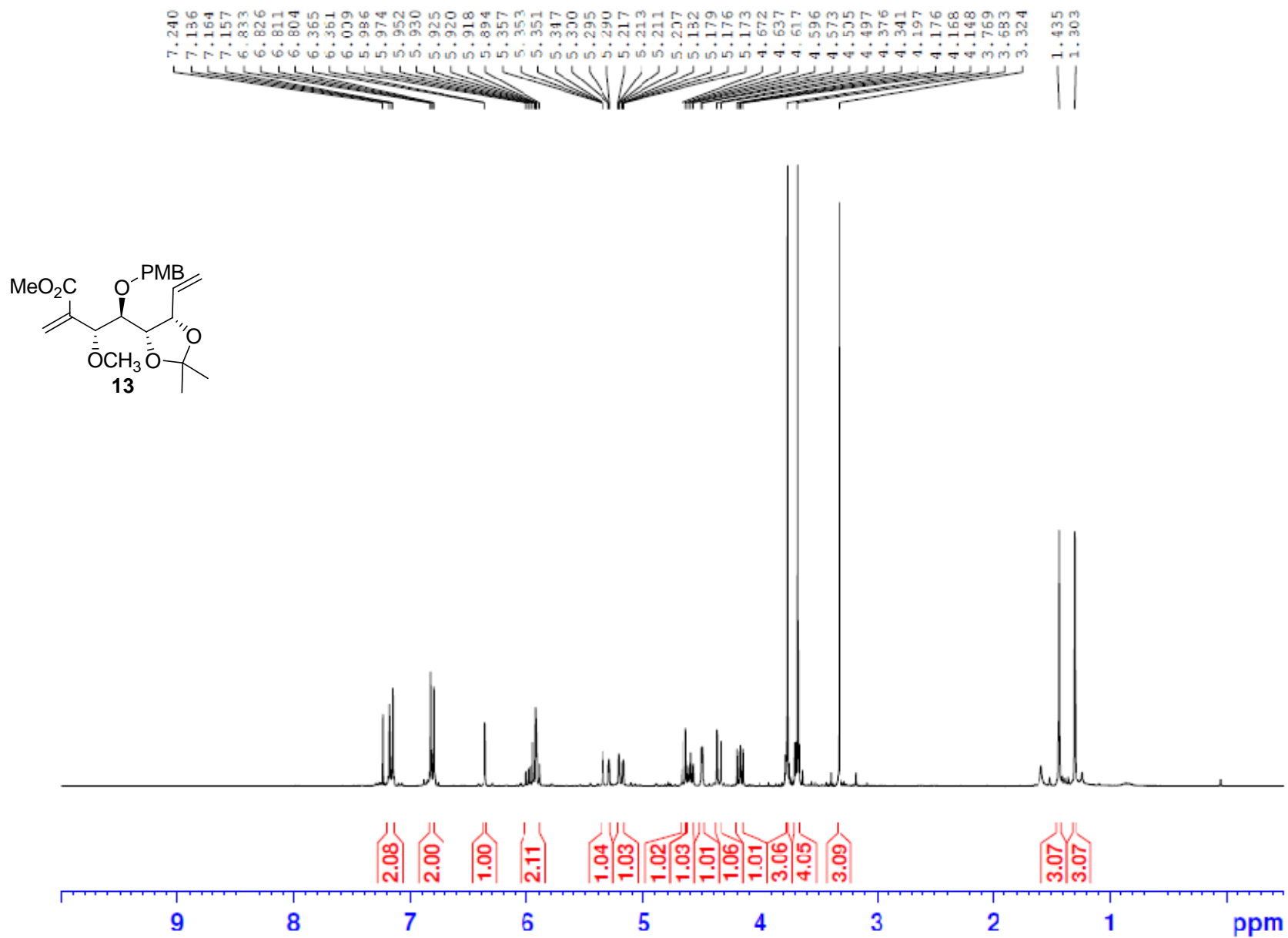
Current Data Parameters:
NAME: 20130809_10030809_10030809_10030809
EXPNO: 1
PROCNO: 1
F1: Acquisition Parameters
Date_Time: 20130809
Time: 22.05
INSTRUM: spect
PROBHD: 5 mm QNP5-1
PULPROG: zgpg30
SOLVENT: CDCl3
NS: 2048
DS: 4
AQ: 1.963966 sec
RG: 384
AQ: 0.133425 Hz
RG: 1.963966 sec
PC: 1.00
PC: 164.000 usec
PC: 2.00 usec
PC: 150.00 K
PC: 1.00000000 sec
===== CHANNEL f1 =====
NUC1: 13C
P1: 17.000 usec
PC1: 0.00 db
PC1: 200.1400000 MHz
F2 - Processing parameters
PC: 164.000 MHz
PC: 350.1350120 MHz
PC: 1.00
PC: 0.00 Hz
PC: 1.00
PC: 1.00
    
```



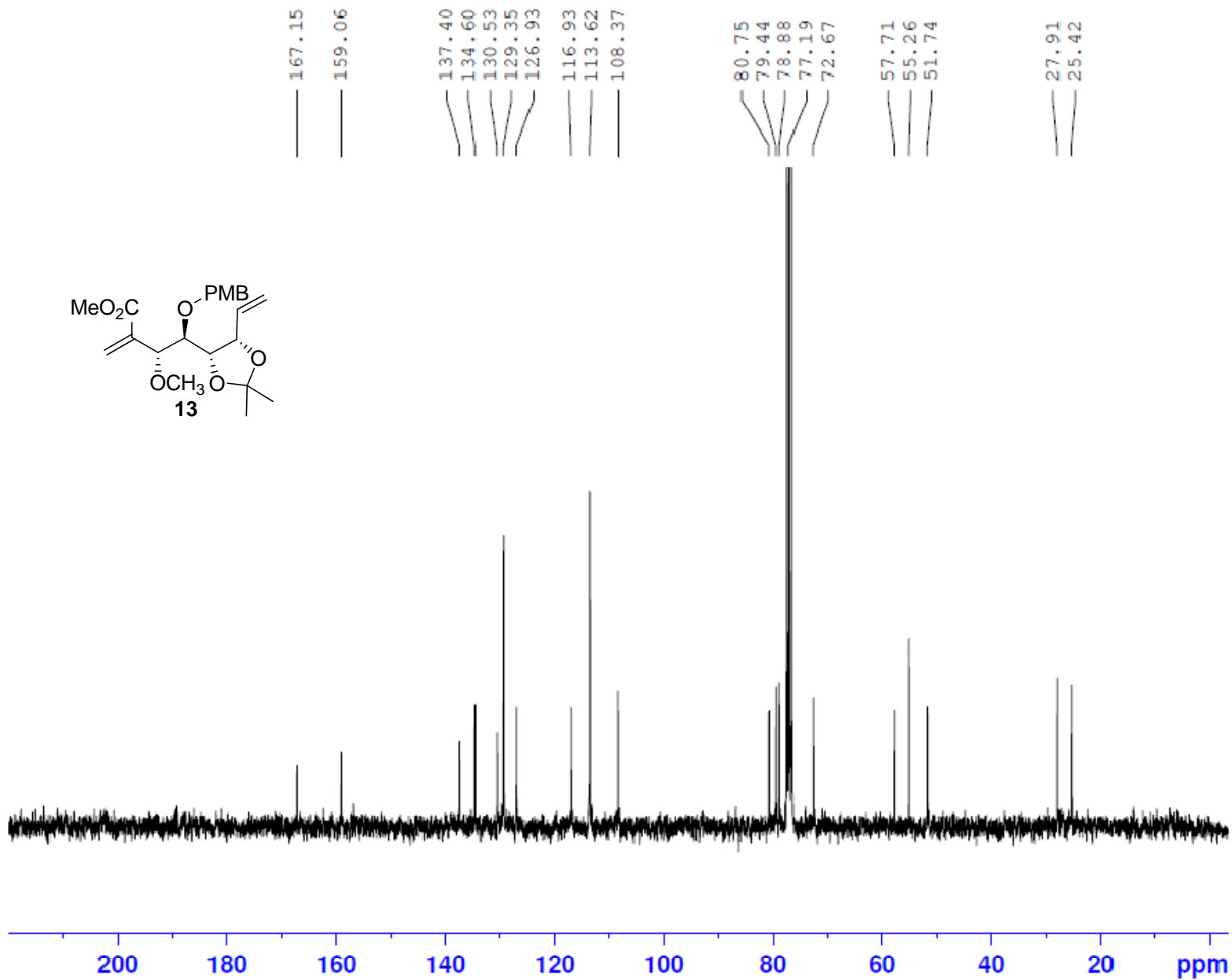
¹H NMR (300 MHz CDCl₃) of compound **11b + 12b**



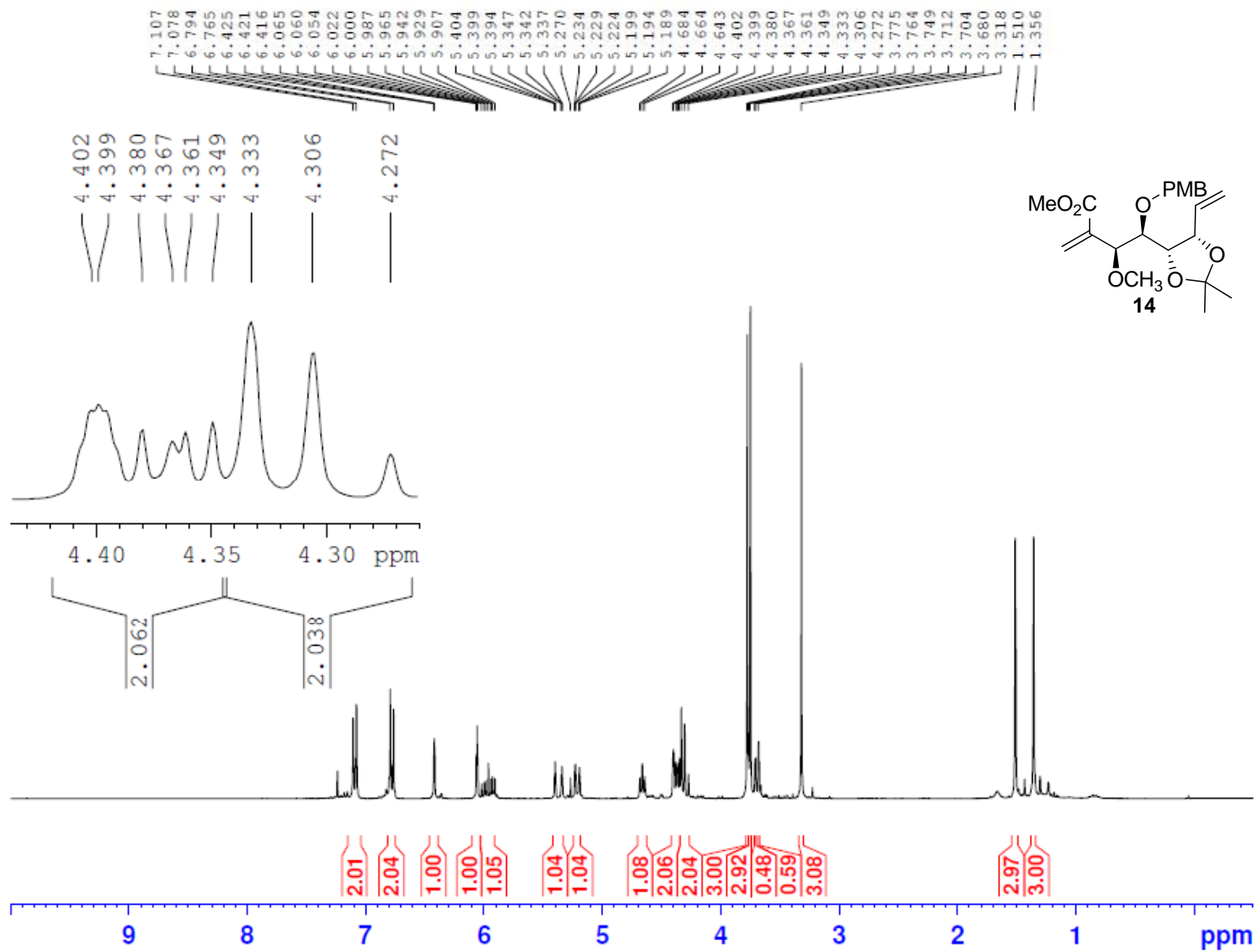
¹³C NMR (75 MHz CDCl₃) of compound **11b + 12b**



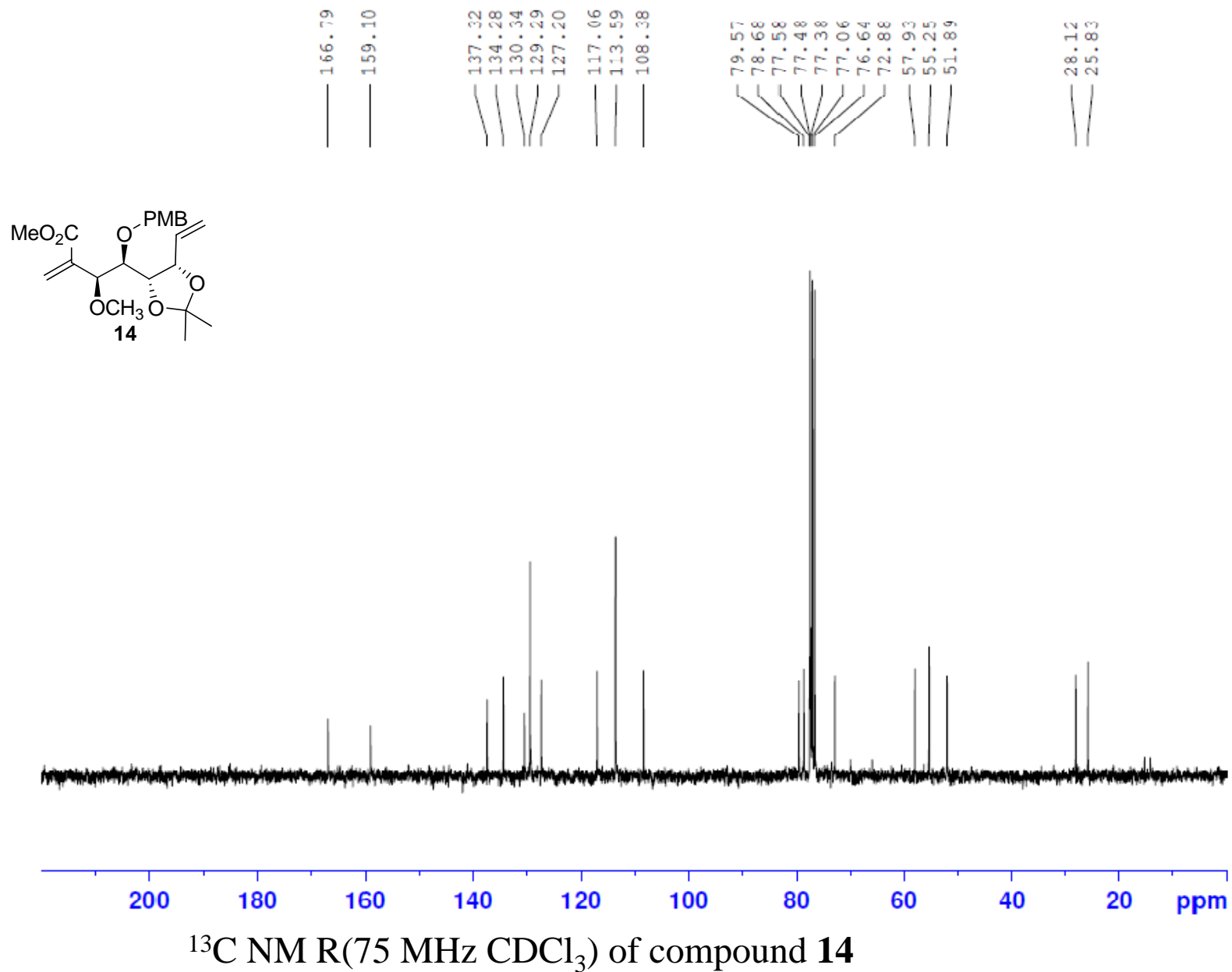
¹H NMR (300 MHz CDCl₃) of compound **13**

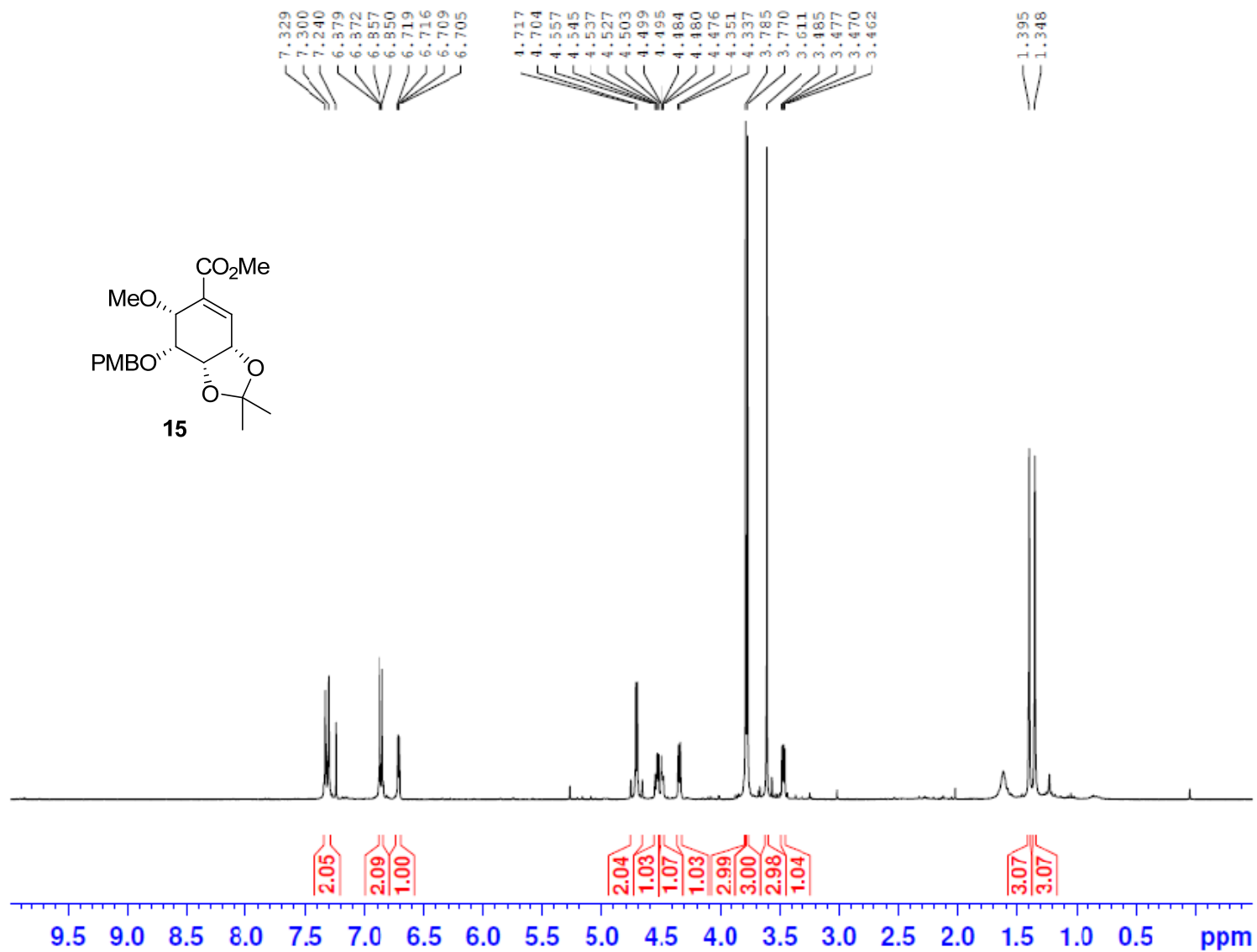


¹³C NMR (75 MHz CDCl₃) of compound **13**

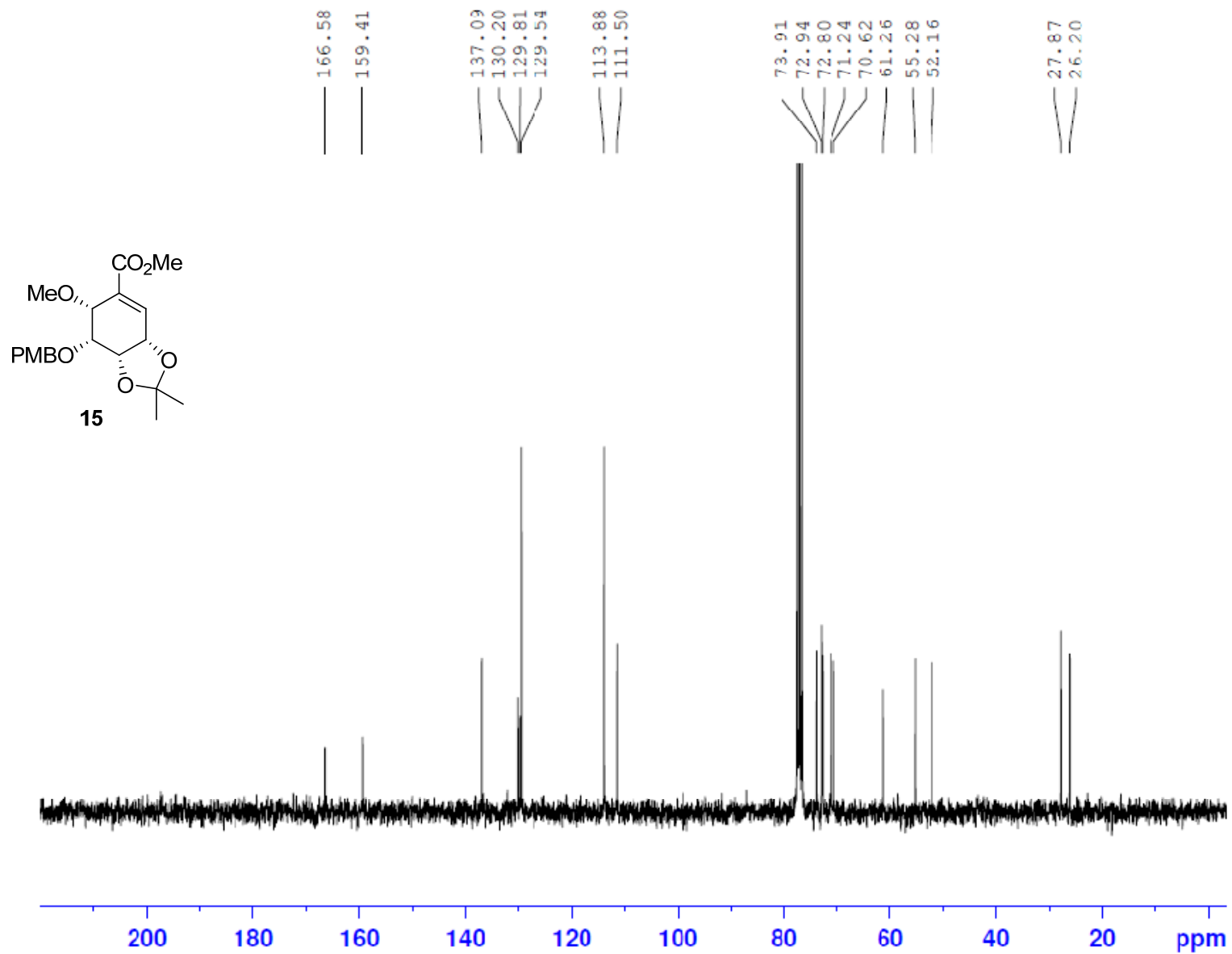


¹H NMR (300 MHz CDCl₃) of compound 14

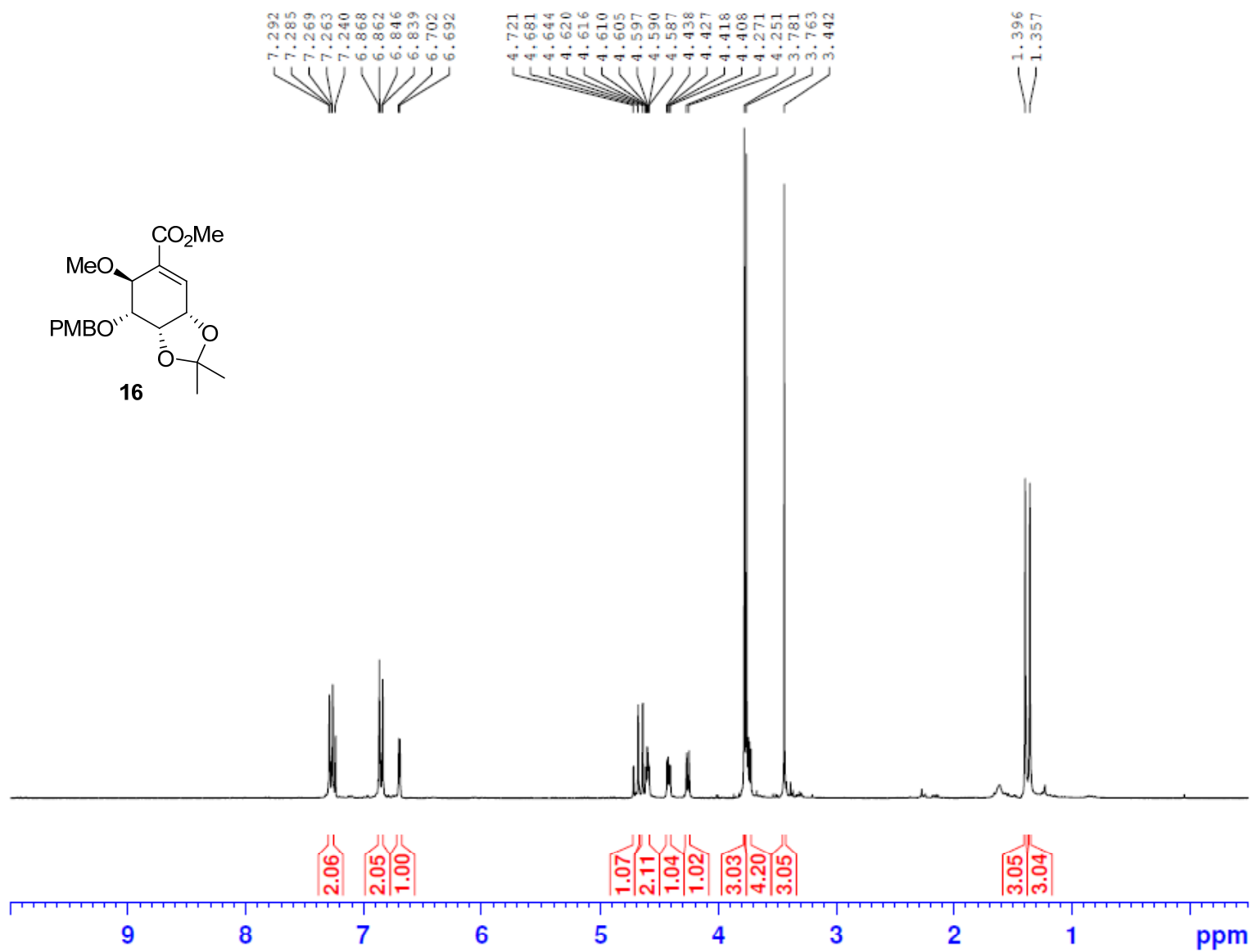




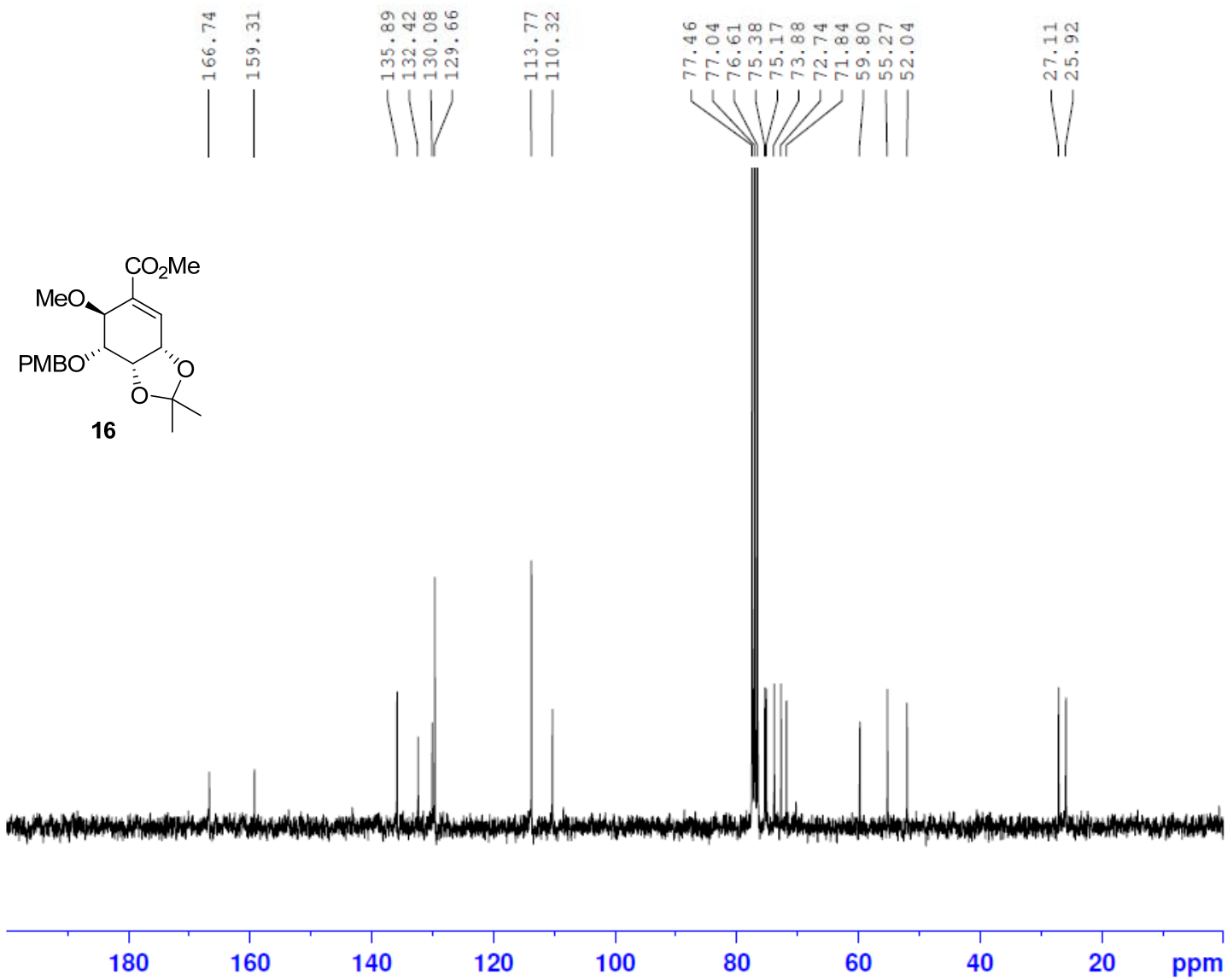
¹H NMR (300 MHz CDCl₃) of compound **15**



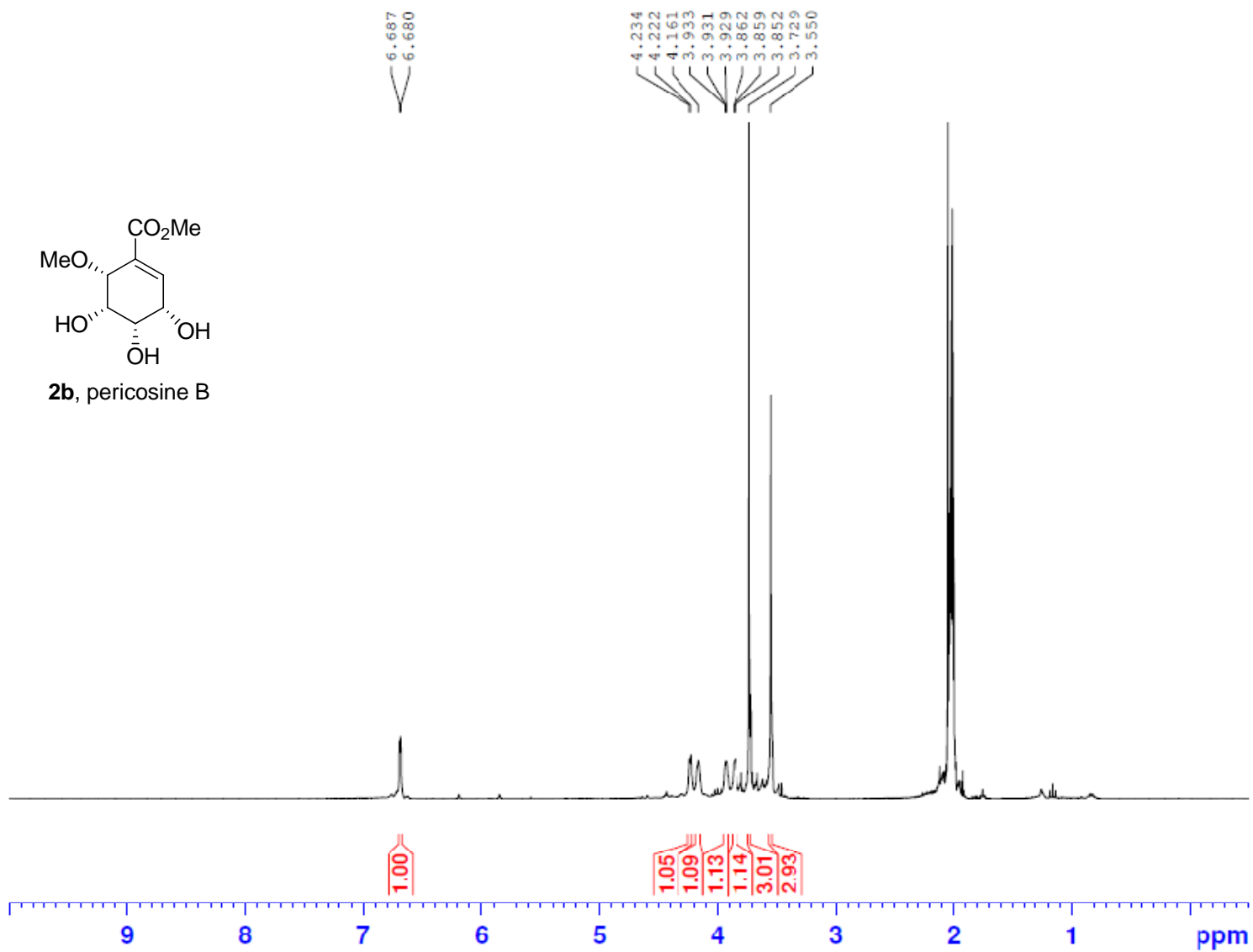
¹³C NMR (75 MHz CDCl₃) of compound **15**



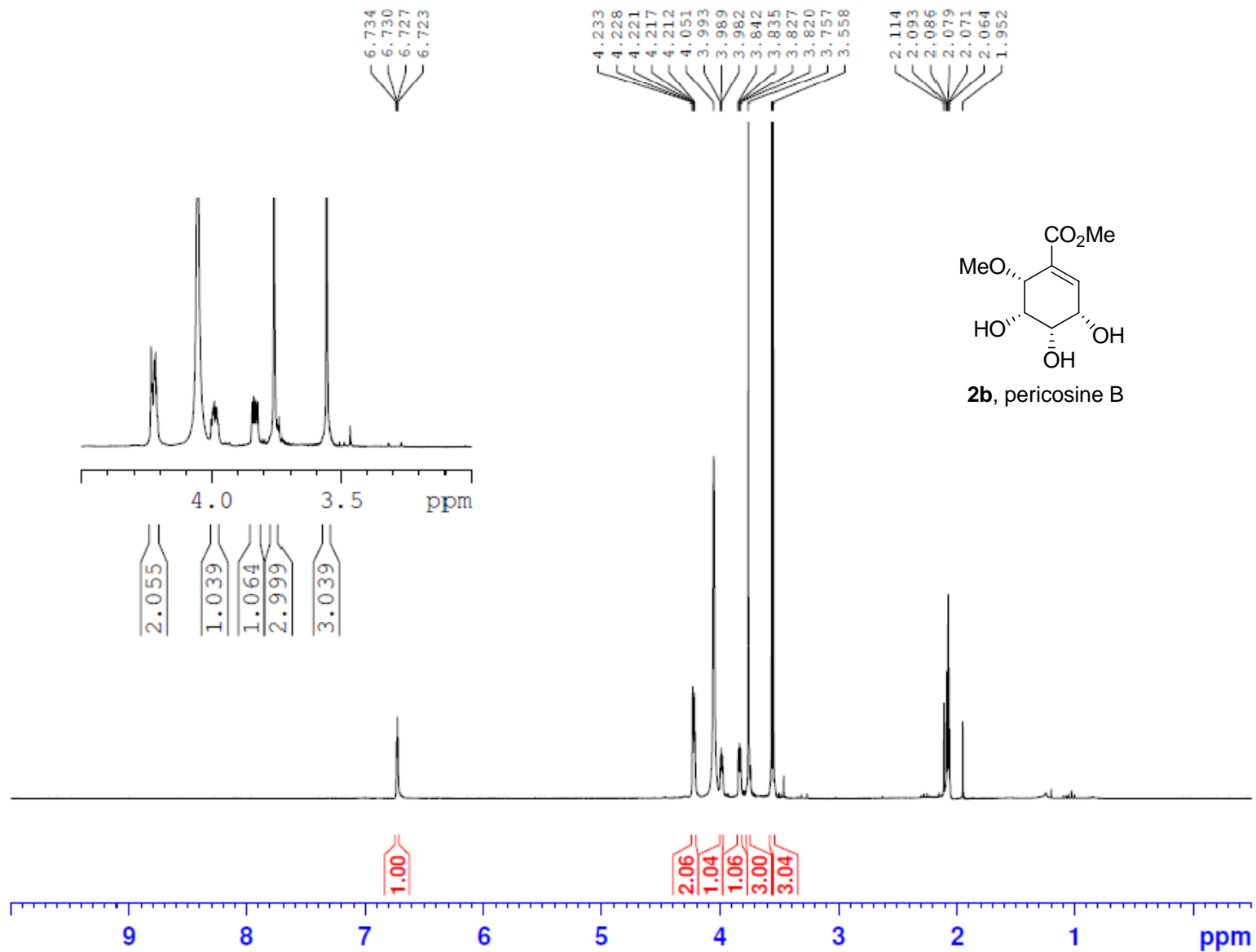
¹H NMR (300 MHz CDCl₃) compound **16**



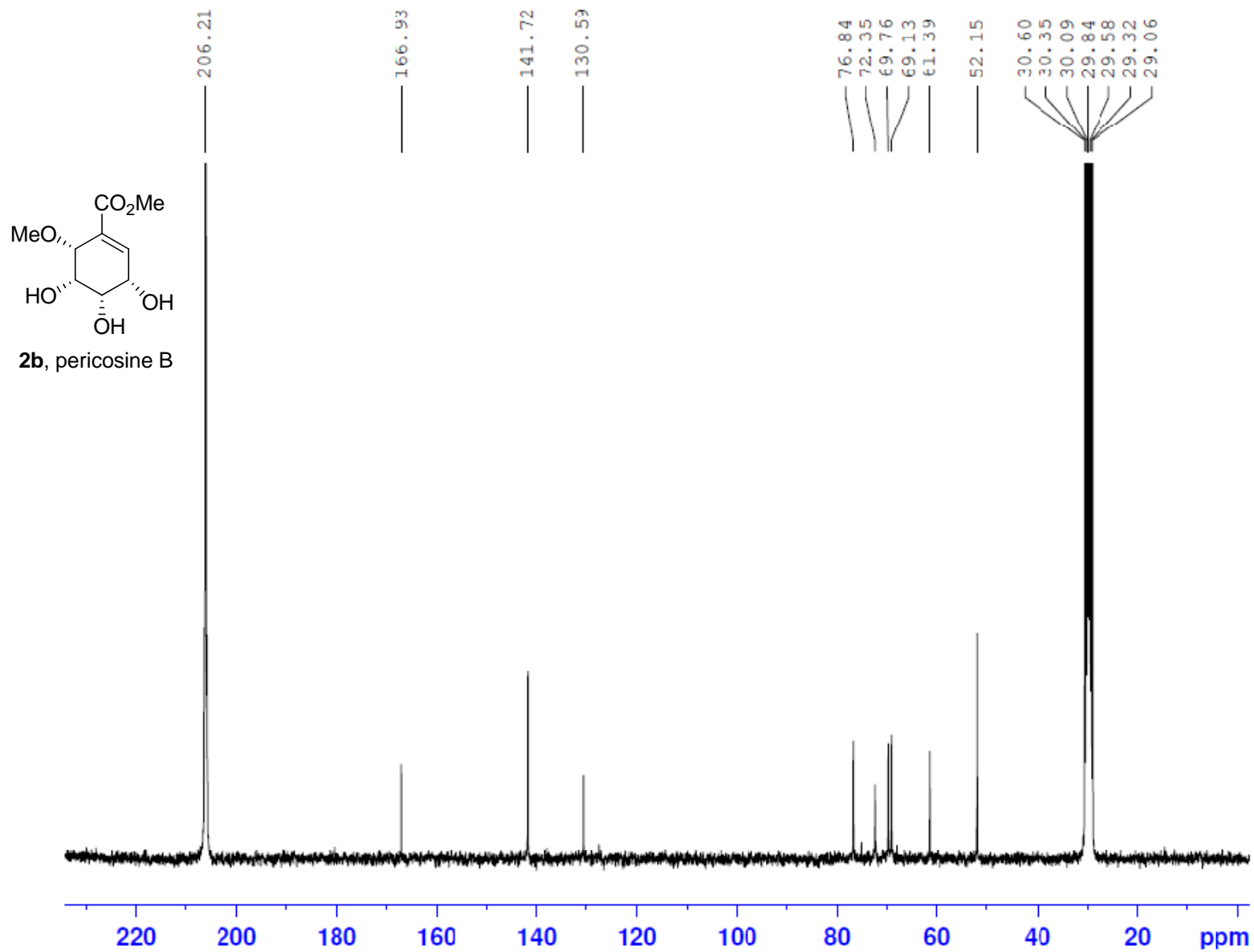
¹³C NMR (75 MHz CDCl₃) compound **16**

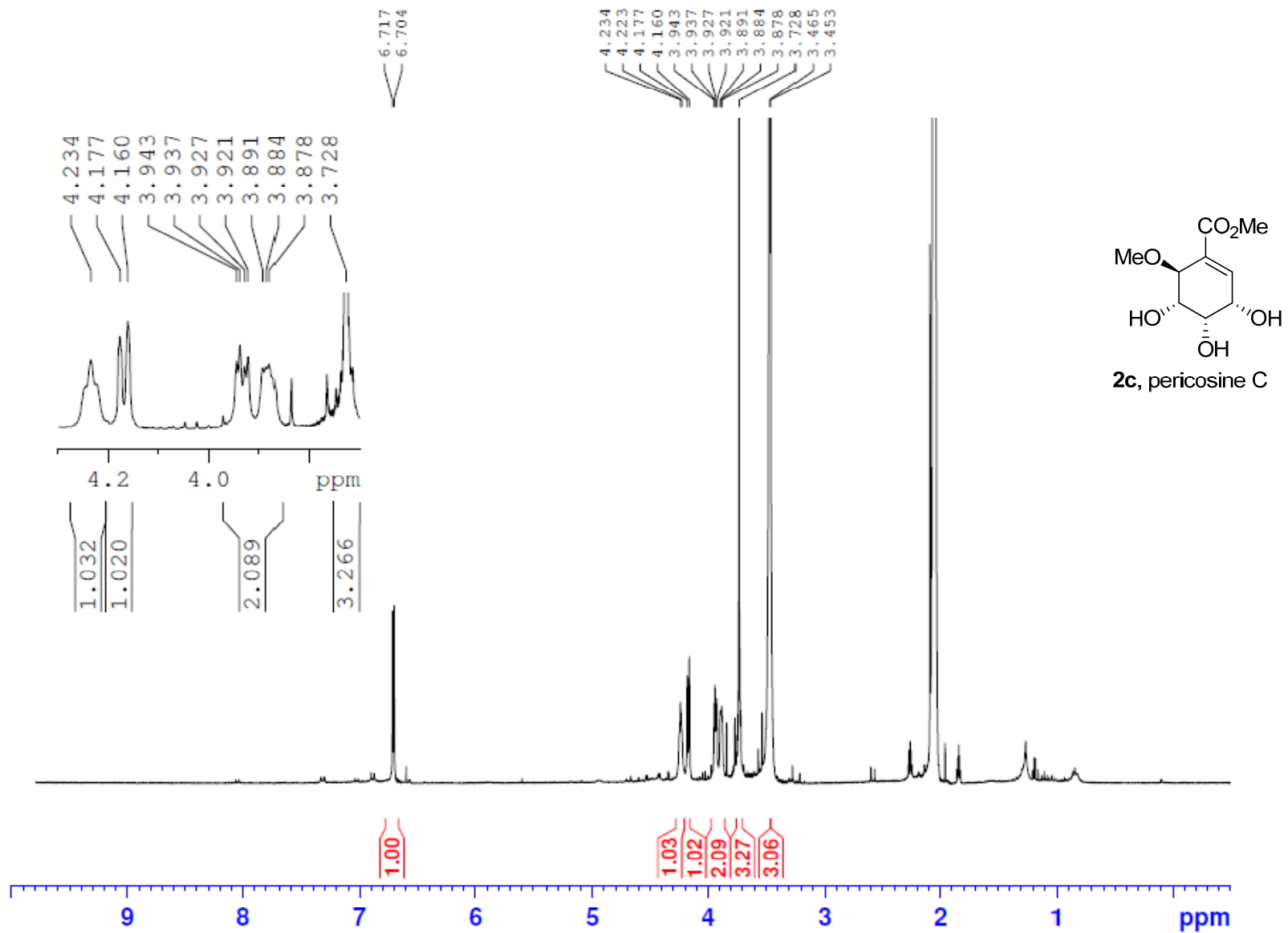


¹H NMR (300 MHz, acetone-d₆) compound **2b**

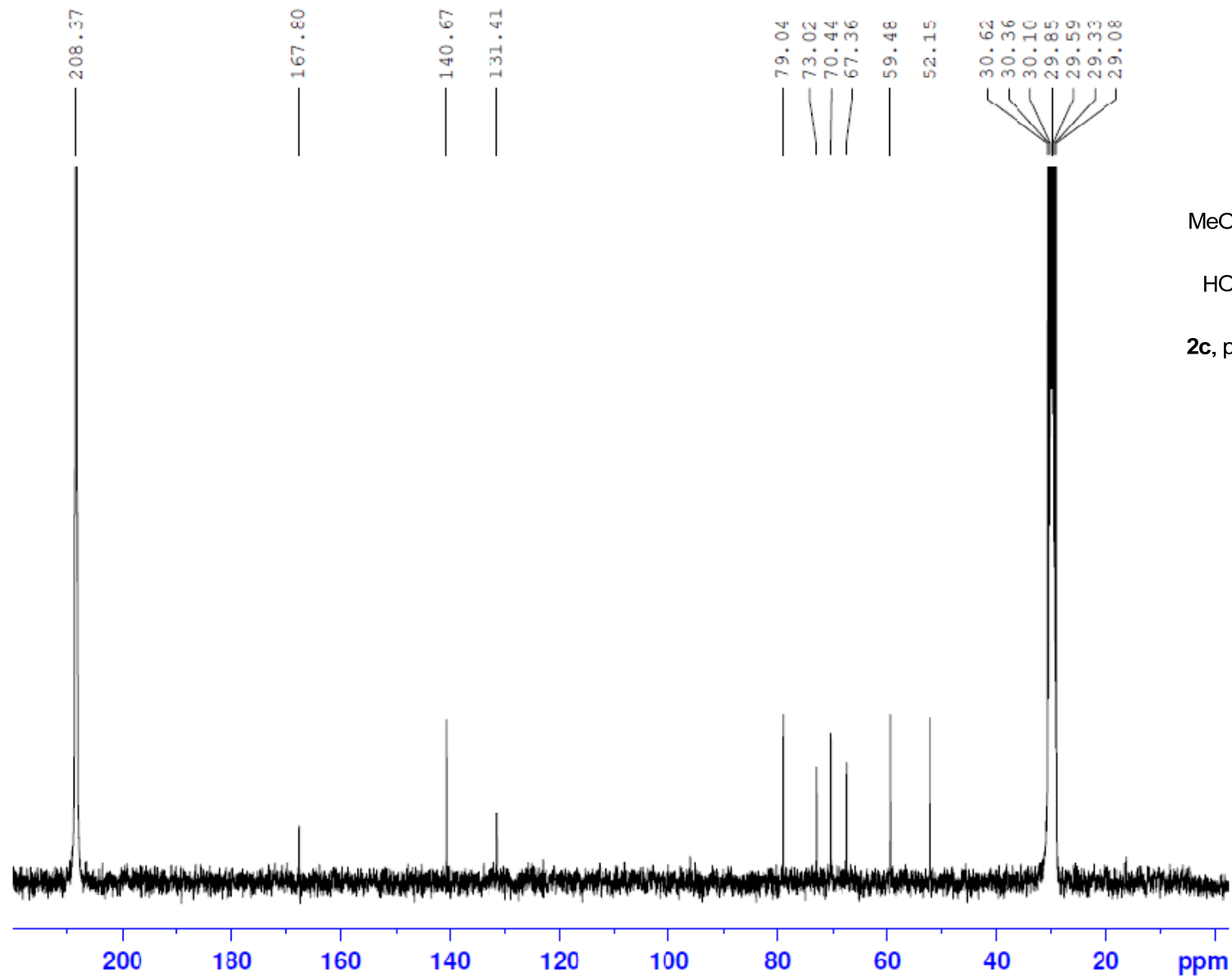


¹H NMR (300 MHz, acetone-d₆/D₂O) compound **2b**

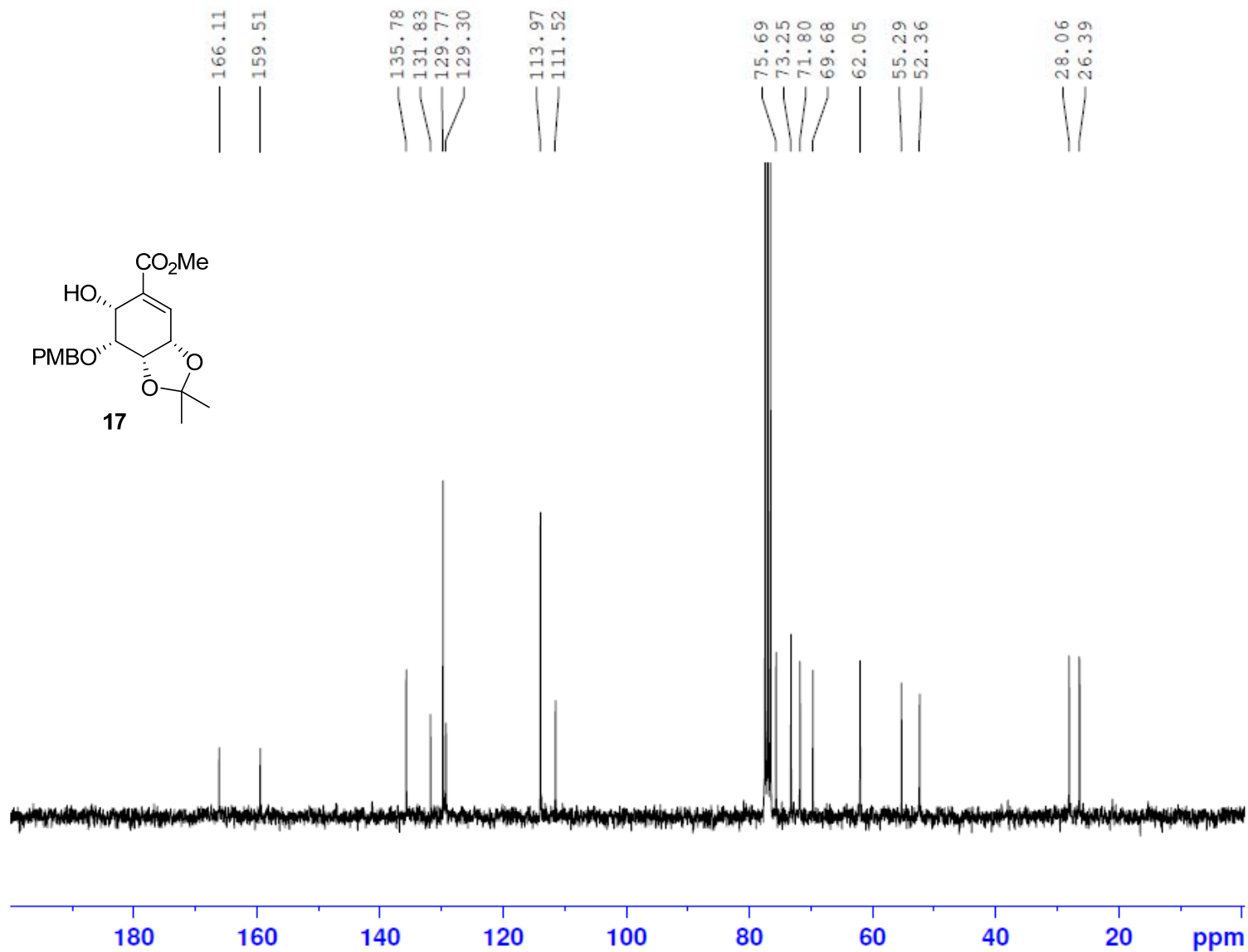




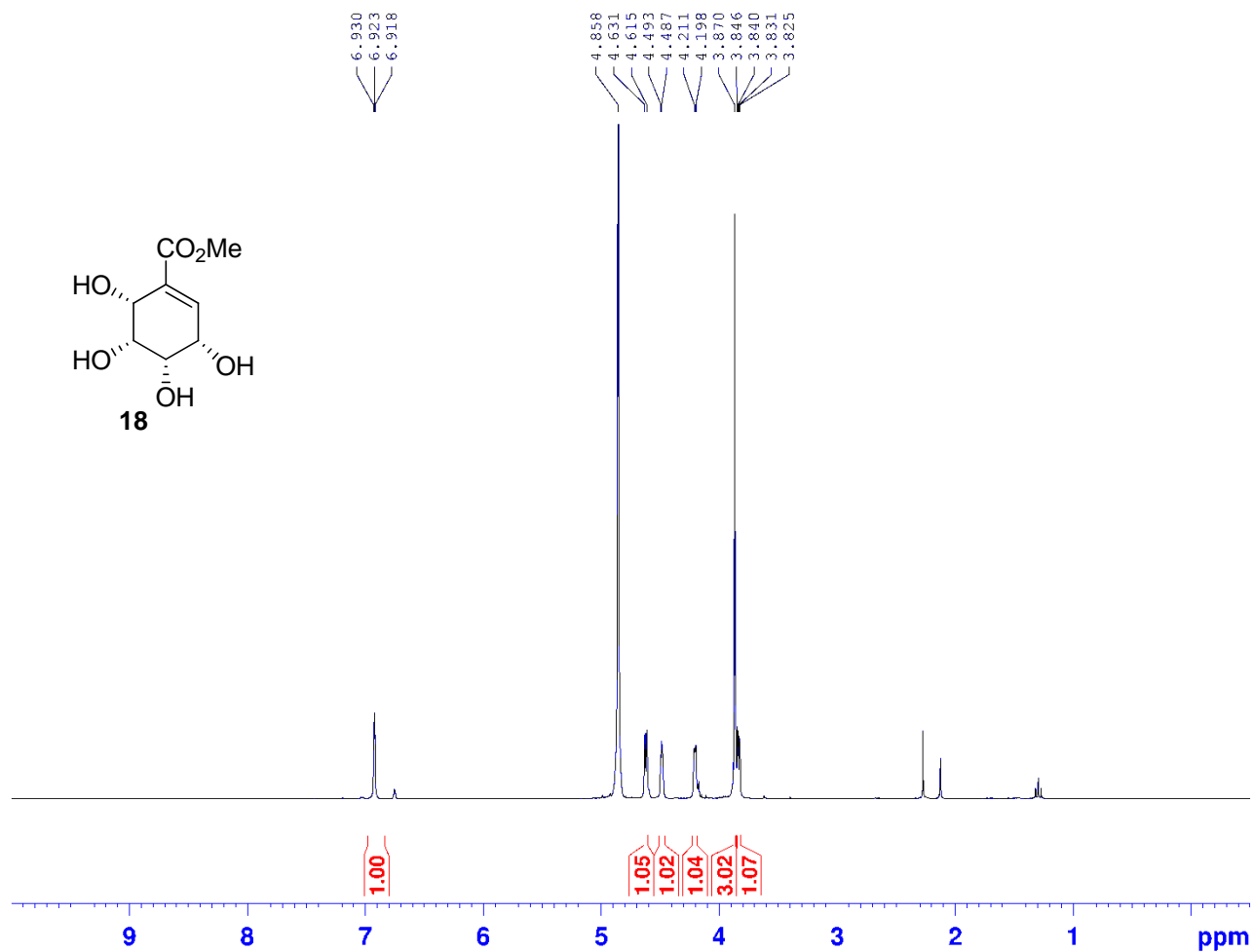
¹H NMR (300 MHz, acetone-d₆/D₂O) compound **2c**



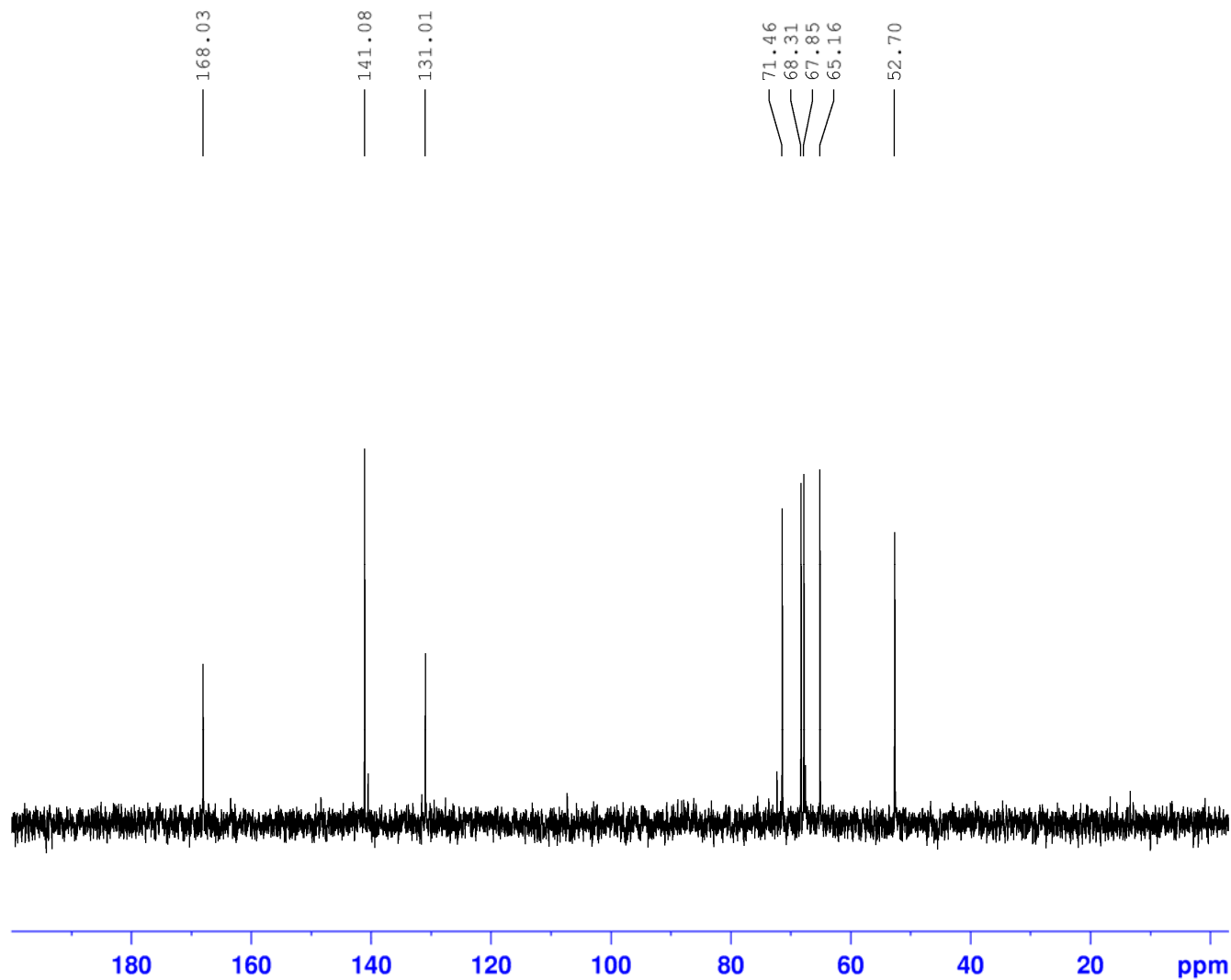
^{13}C NMR (75 MHz, acetone- d_6) of compound **2c**



¹³C NMR(75 MHz CDCl₃) of compound **17**



^1H NMR(300 MHz CDCl_3) of compound **18**



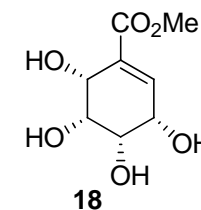
```
Current Data Parameters
NAME 20130327 ribose 10 TFA Cl3 pure
EXPNO 1
PROCNO 1

F2 - Acquisition Parameters
Date_ 20130327
Time 22.35
INSTRUM spect
PROBHD 5 mm PABBO BB-
PULPROG zgpg30
TD 32768
SOLVENT D2O
NS 1359
DS 0
SWH 17857.143 Hz
FIDRES 0.544957 Hz
AQ 0.9175540 sec
RG 2050
DM 29.000 usec
DE 6.00 usec
TE 300.0 K
D1 2.00000000 sec
d11 0.03000000 sec
DELTA 1.89999998 sec
TDO

===== CHANNEL f1 =====
NUC1 13C
P1 9.85 usec
PL1 0.00 dB
SFO1 75.4884982 MHz

===== CHANNEL f2 =====
CPDPRG2 waltz16
NUC2 1H
PCPD2 90.00 usec
PL12 17.70 dB
PL13 20.70 dB
PL2 0.50 dB
SFO2 300.1392007 MHz

F2 - Processing parameters
SI 16384
SF 75.4798039 MHz
WDW EM
SSB 0
LB 2.00 Hz
GB 0
PC 1.00
```



¹³C NMR(75 MHz CDCl₃) of compound **18**