

Supporting Information

A Reticuloendothelial System-Stealthy Dye-Albumin
Nanocomplex as a Highly Biocompatible and Highly
Luminescent Nanoprobe for Targeted In Vivo Tumor
Imaging

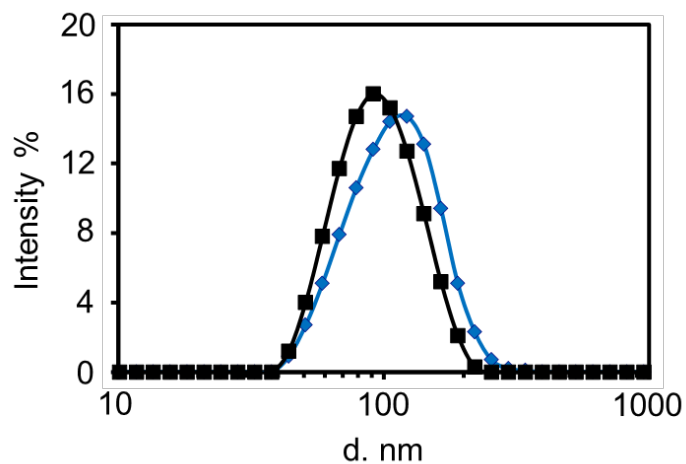


Figure S1. Hydrodynamic diameter distribution of nanocomplex in deionized water by intensity at day 0 (black) and day 46 (blue).

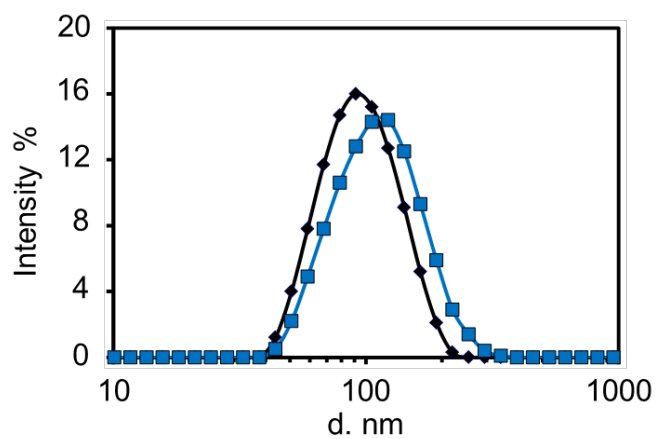


Figure S2. Hydrodynamic diameter distribution of nanocomplex in saline by intensity at day 0 (black) and day 2 (blue).

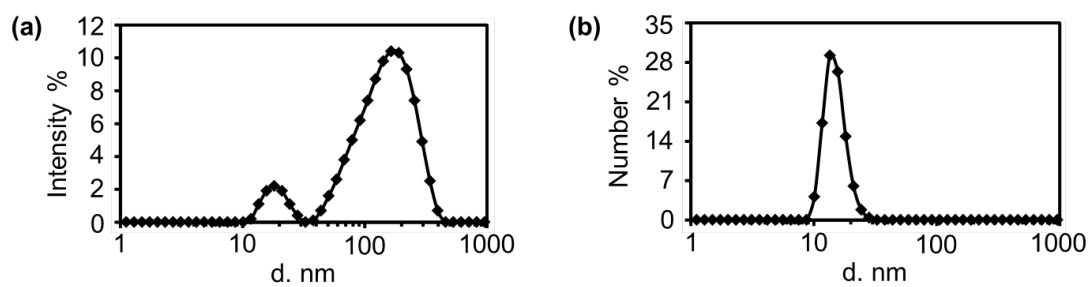


Figure S3. Hydrodynamic diameter distribution of Spiro-BTA loaded DSPE-PEG nanomicelle in saline by intensity (a) and number (b).