

Resin Supported Acyl Carrier Protein Labeling Strategies

(Supplementary Information)

Michael Rothmann, Nicolas M. Kosa, and Michael D. Burkart

Received (in XXX, XXX) Xth XXXXXXXXXX 20XX, Accepted Xth XXXXXXXXXX †Department of Chemistry and Biochemistry, University of California, San Diego, 9500 Gilman Drive, La Jolla, CA 92093-0358, United States

Correspondence should be directed to mburkart@ucsd.edu

Contents:	Page
Gels for figures 2 and 3	S2
Supplementary Sfp Kinetics	S3

Full gels from Figure 2 and 3.

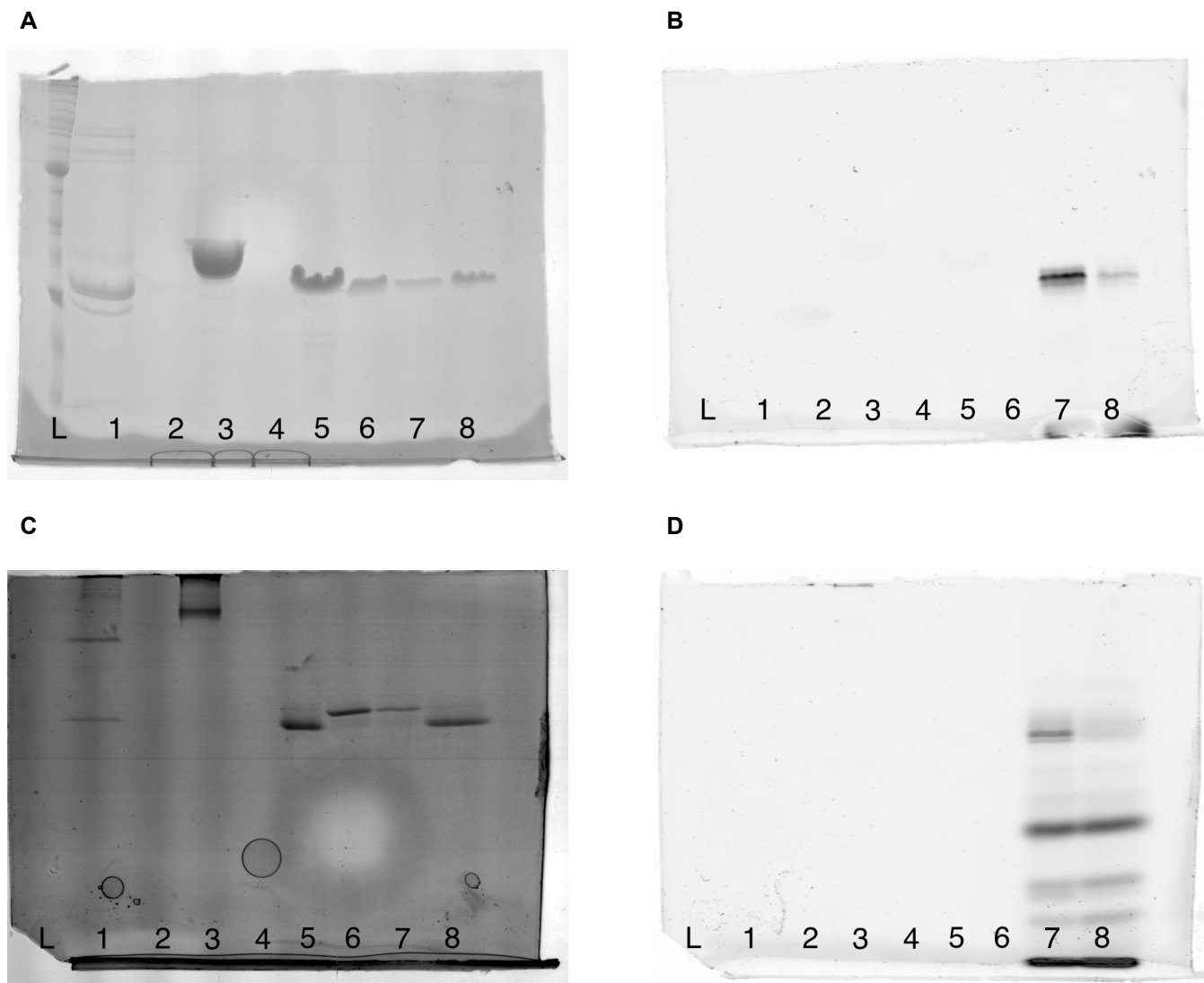


Figure S1 Full gels of figure 1. **A:** SDS-PAGE, Coomassie stain. **B:** SDS-PAGE, Fluorescence λ_{532} . **C:** Urea-PAGE, Coomassie Stain. **D:** Urea-PAGE, Fluorescence λ_{532} . Lane key for all gels. **L:** Benchmark Ladder. **1:** Soluble AcpH. **2:** Supernatant from AcpH/Affi-gel coupling. **3:** Soluble Sfp. **4:** Supernatant from Sfp/Affi-gel coupling. **5:** Holo-ACP. **6:** (5)+ AcpH resin. **7:** (6) + Sfp resin, rhodamine-CoA. **8:** (5)+ Sfp Resin, rhodamine-CoA.

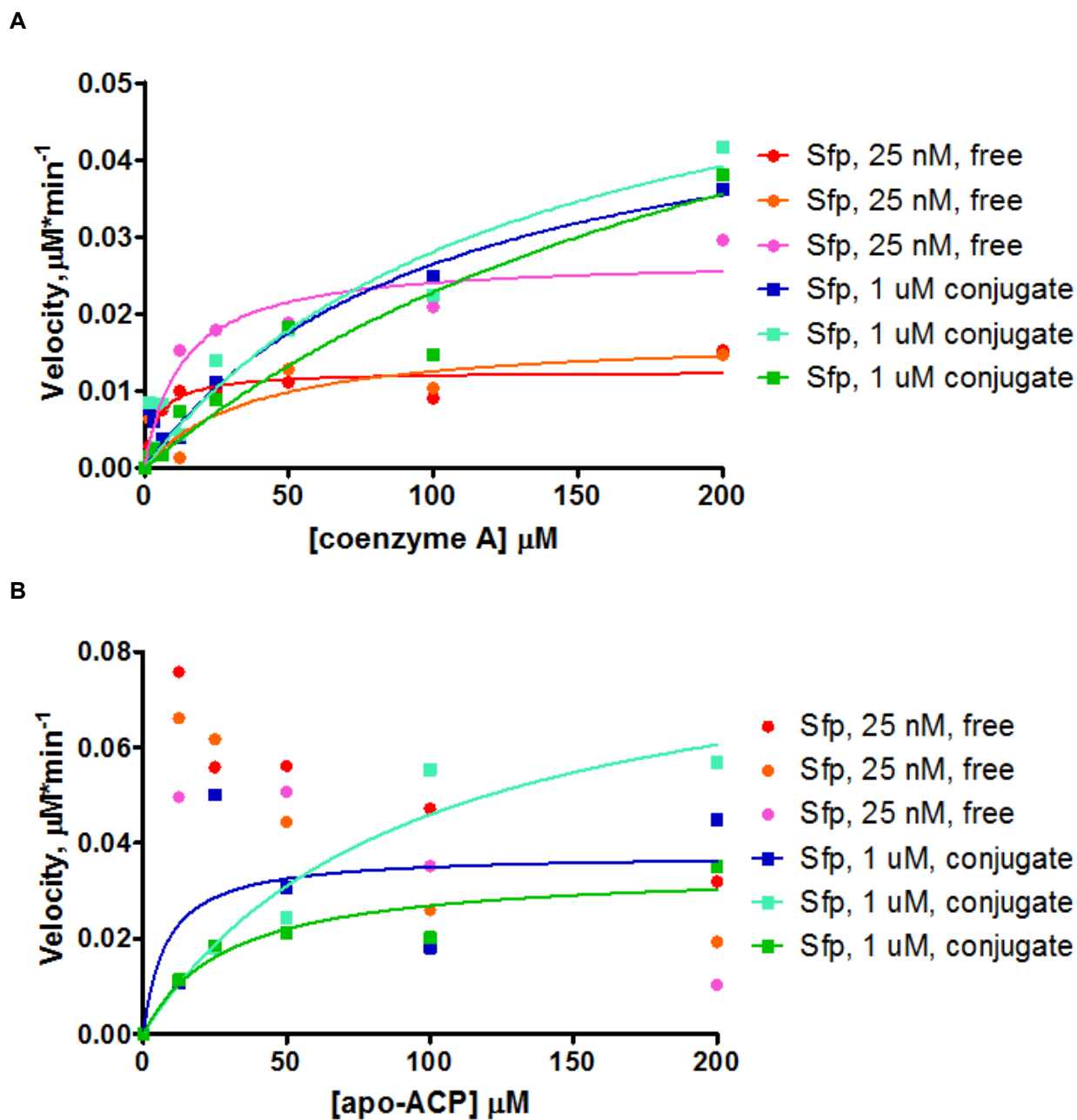


Figure S2 Supplementary Sfp Kinetics. Discrete graphs for Sfp/*apo*-ACP (A) and Sfp/CoA (B) depict the deviation of discrete samples..