

Supporting information for

The breakdown of reticent biomass to soluble components and their conversion to levulinic acid as a fuel precursor

Jiang Li, Dao-jun Ding, Lu-jiang Xu, Yao Fu*, Qing-xiang Guo

Supporting Figures

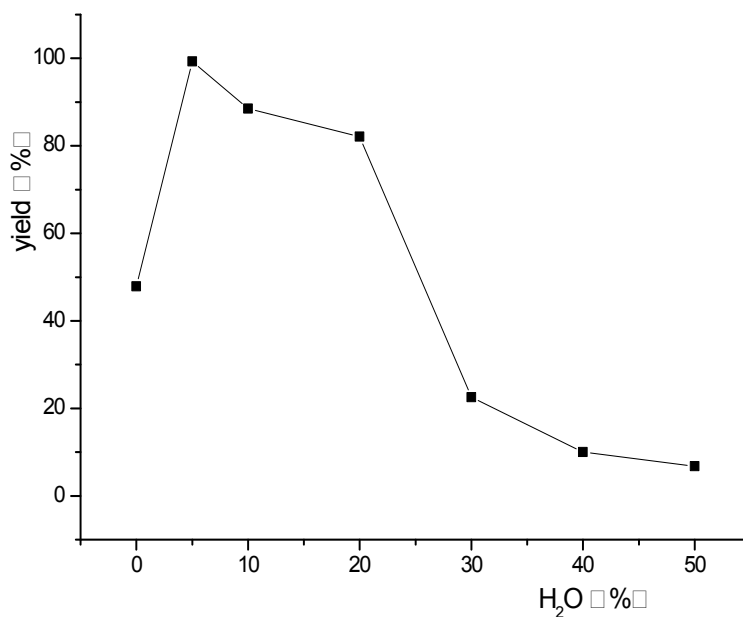
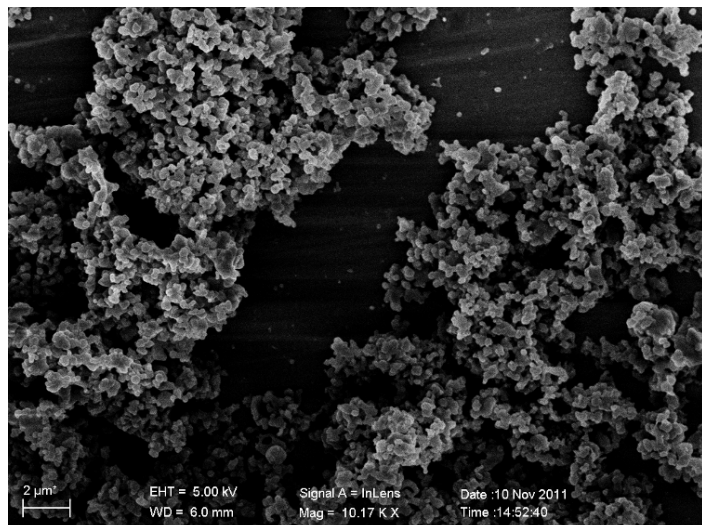
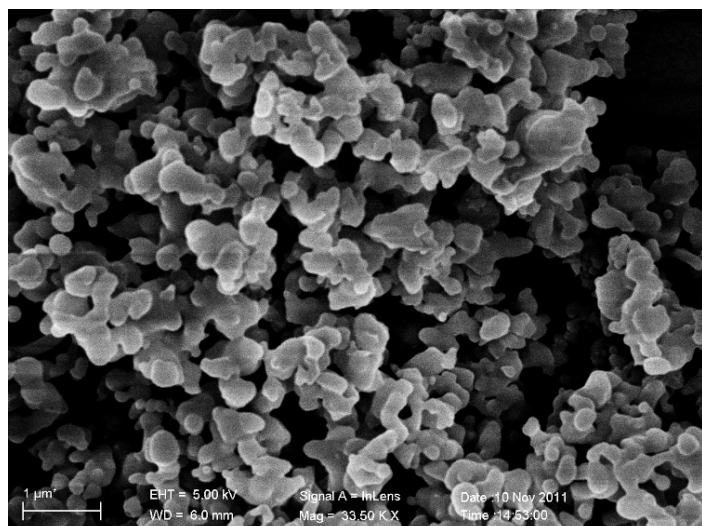


Figure S1. Effect of water content in the solvent on the yield of furfuryl alcohol from furfural and formic acid. Reaction condition: Furfural (2 mmol), FA (8 mmol), Ru/C (0.4 g), additive (NaOH) was 10 mol% to the formic acid.

A:



B:



C:

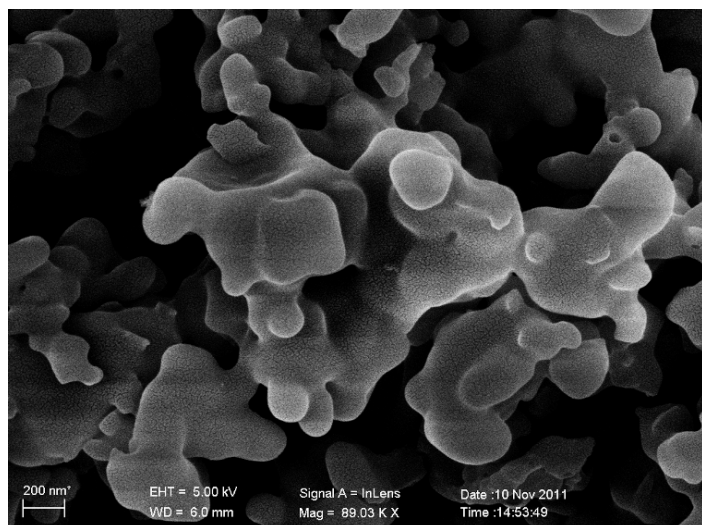


Figure S2. Low magnification SEM image of the solid residue. The lignin droplets could be

clearly observed.