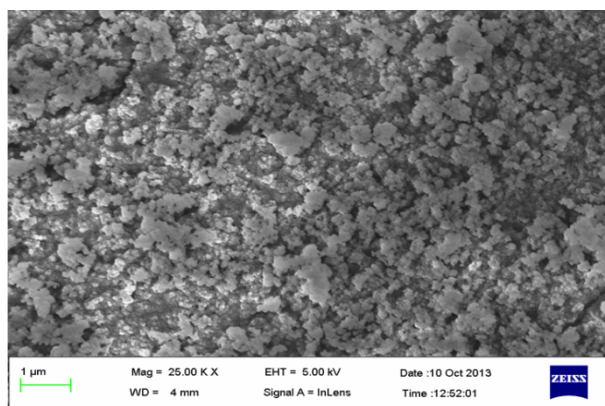
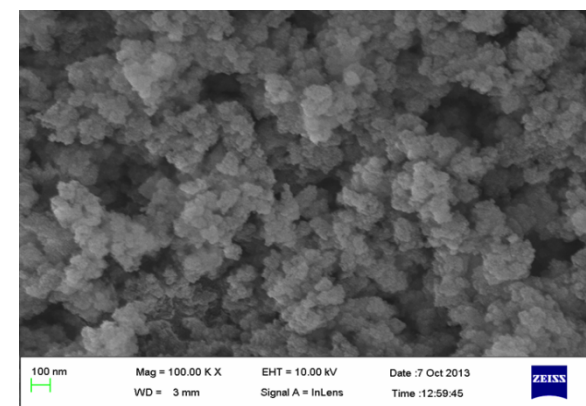
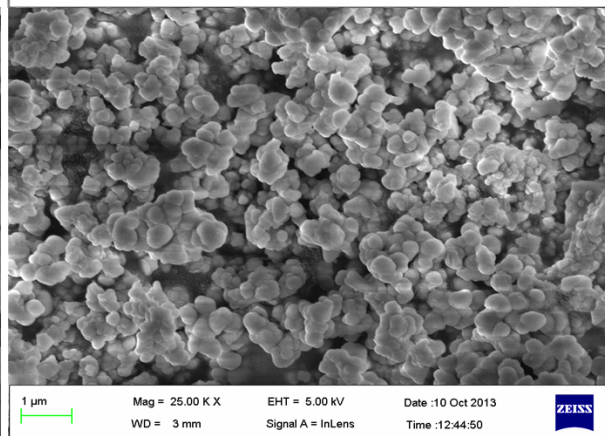
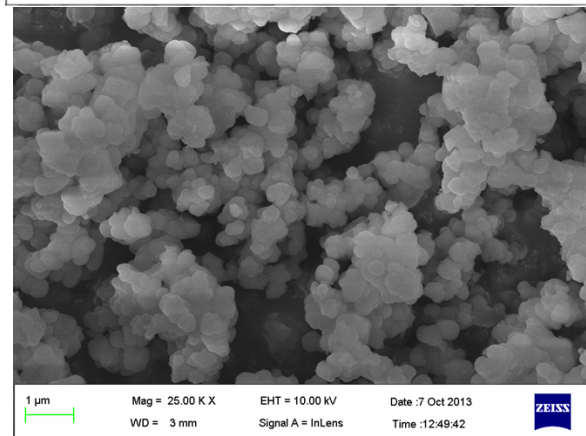
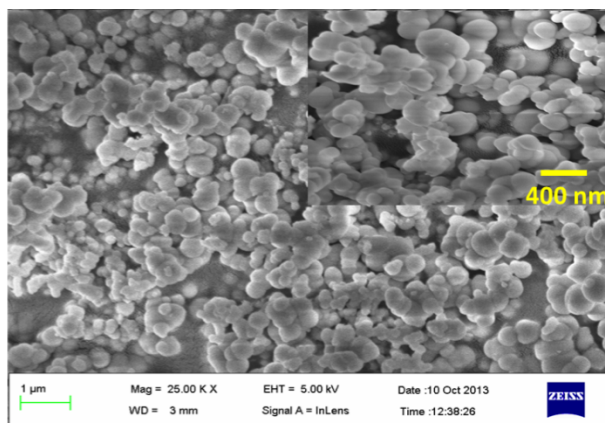
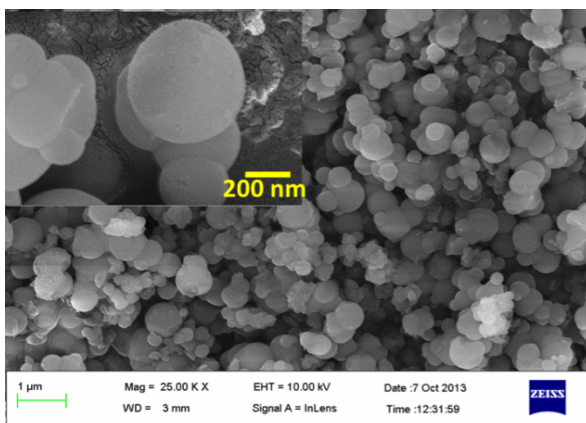


Supporting information



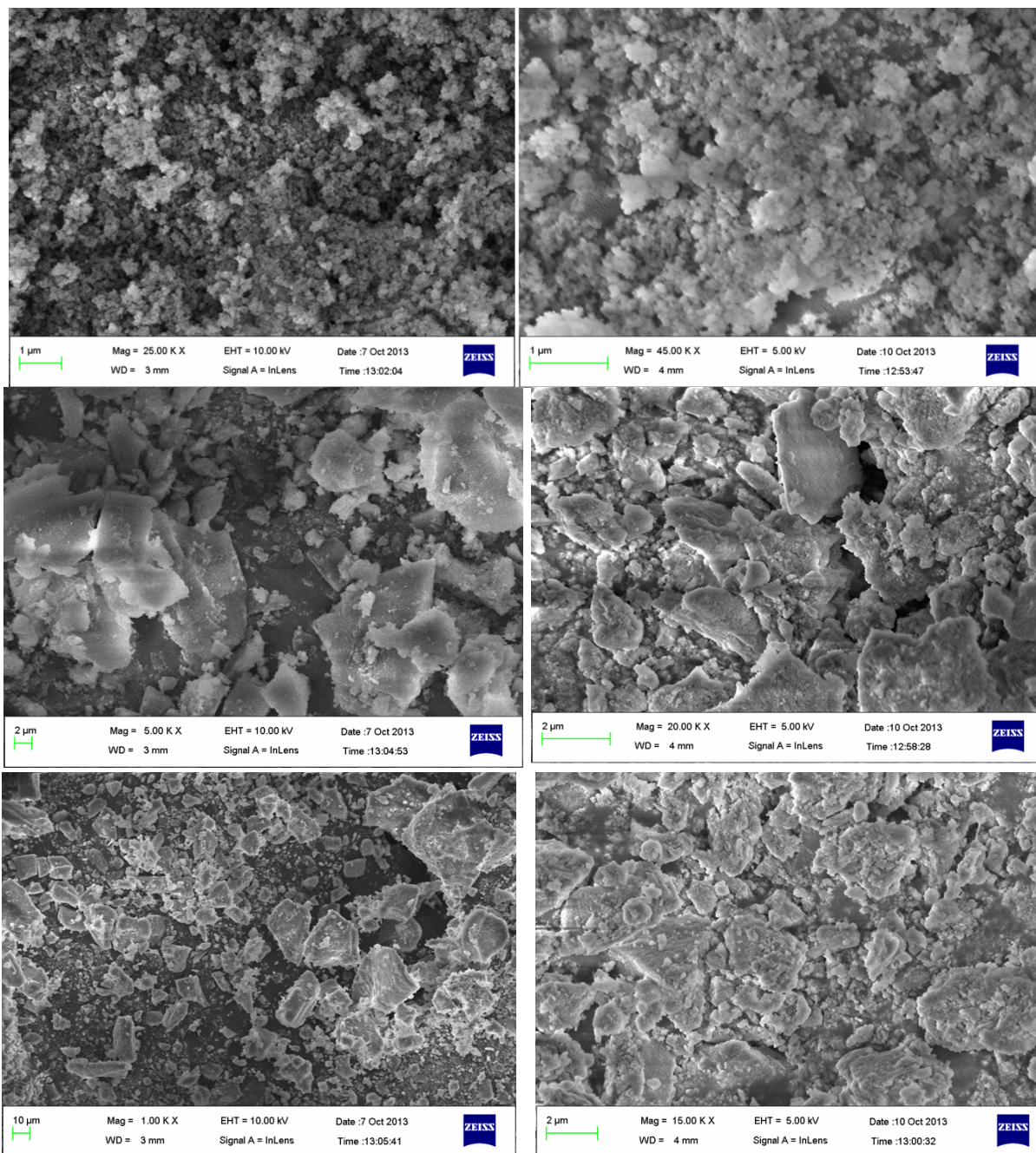


Fig. S1 SEM images of sub-micrometric silica particles doped with different concentrations of alumina. From left to right, particles are at 500 °C to 900 °C; top to bottom shows different concentration of alumina in silica particles, by row from the top (silica:alumina): (1:0.1), (1:0.25), (1:0.35), (1:0.5), (1:0.65), and (1:0.75).