

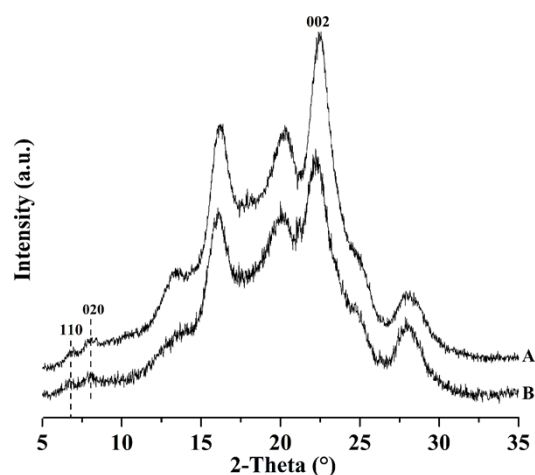
## Electronic Supporting Information

### Facile preparation of composites composed of high performance thermoplastic and difficult-to-process functional polymer

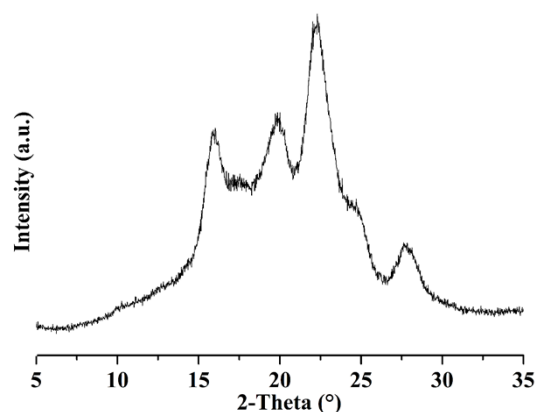
Shaobo Han, Yang Feng, Guangming Chen\* and Jianjun Wang

Beijing National Laboratory for Molecular Sciences (BNLMS), Institute of Chemistry, Chinese Academy of Sciences,  
Beijing 100190, P. R. China.

E-mail: chengm@iccas.ac.cn (G. Chen)



**Fig. S1** XRD patterns of sPS/CHCl<sub>3</sub> cocrystalline films after guest extraction with (A) acetone, and (B) acetonitrile. Both samples showed the XRD pattern of the  $\epsilon$  form with  $C \perp$  uniplanar orientation.



**Fig. S2** XRD pattern of sPS/EDOT  $\delta$  cocrystalline film.