

## Supporting Information

### Enhanced Biocompatibility of Biostable Poly (styrene-*b*-isobutylene-*b*-styrene) elastomer via Poly (dopamine)-Assisted Chitosan/Hyaluronic Acid Immobilization

Shuaishuai Yuan<sup>a,d</sup>, Zhihong Li<sup>b</sup>, Jie Zhao<sup>c</sup>, Shifang Luan<sup>a,\*</sup>, Jiao Ma<sup>a,d</sup>, Lingjie Song<sup>a,d</sup>, Hengchong Shi<sup>a</sup>, Jing Jin<sup>a</sup>, Jinghua Yin<sup>a,\*</sup>

<sup>a</sup> State Key Laboratory of Polymer Physics and Chemistry, Changchun Institute of Applied Chemistry, Chinese Academy of Sciences, Changchun 130022, PR China

<sup>b</sup> The Thoracic Department of The First Hospital of Jilin University, Changchun 130021, PR China

<sup>c</sup> Department of Chemistry, Georgia Southern University, P.O. Box 8064, Statesboro, GA 30460, USA

<sup>d</sup> University of Chinese Academy of Sciences, Beijing 100049, PR China

\*Corresponding authors. Tel.: +86 431 85262109; fax: +86 431 85262109.

*Email address:* [yinhj@ciac.ac.cn](mailto:yinhj@ciac.ac.cn) (J. Yin) and [sfluan@ciac.ac.cn](mailto:sfluan@ciac.ac.cn) (S. Luan).

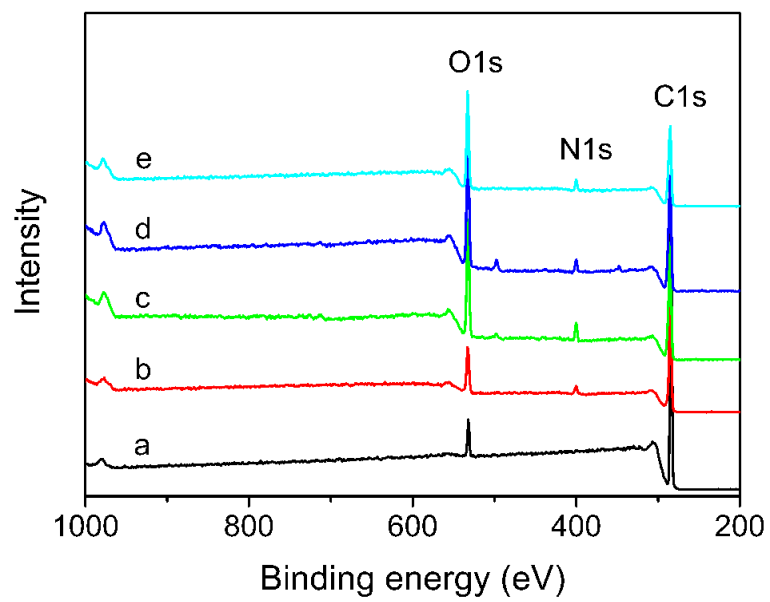
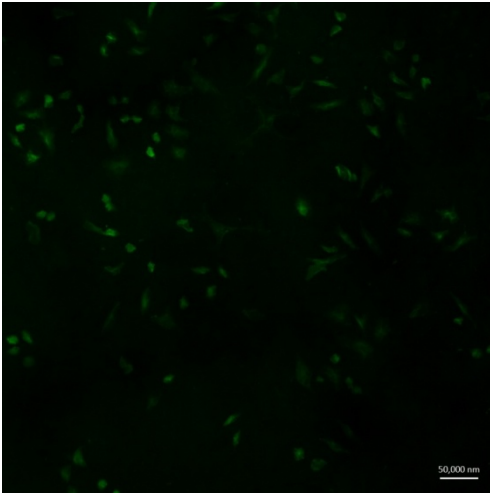
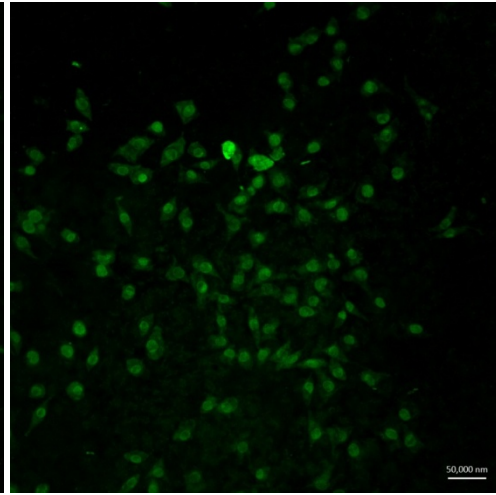


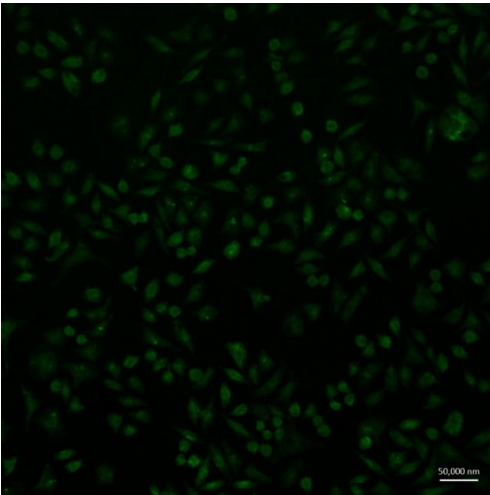
Figure S1. XPS curves of the various SIBS supports. (a) SIBS, (b) SIBS-PDA, (c) SIBS-CS, (d) SIBS-HA, and (e) SIBS-CS-*g*-HA.



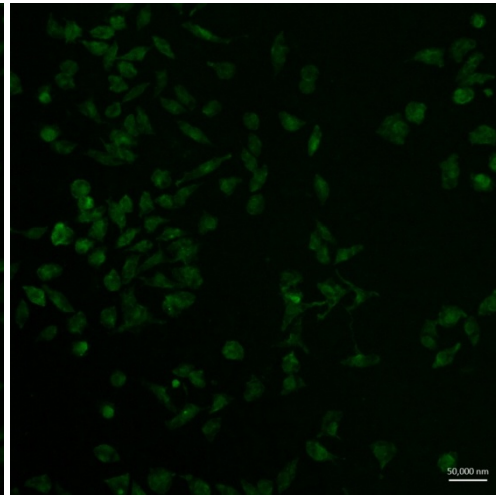
a-1



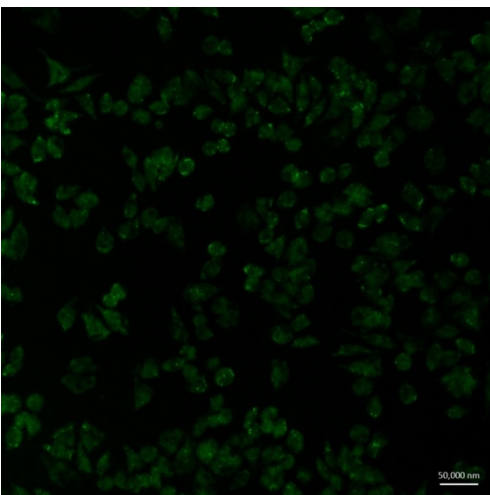
a-2



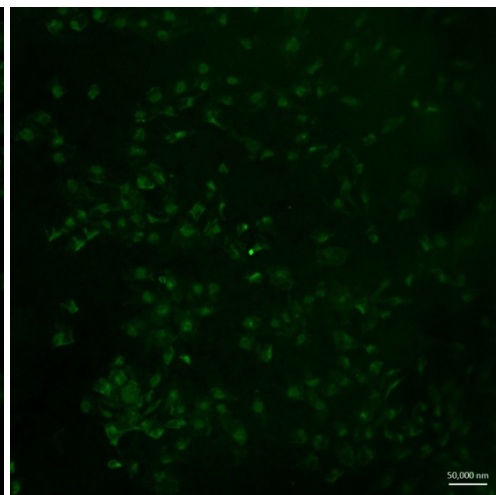
b-1



b-2



c-1



c-2

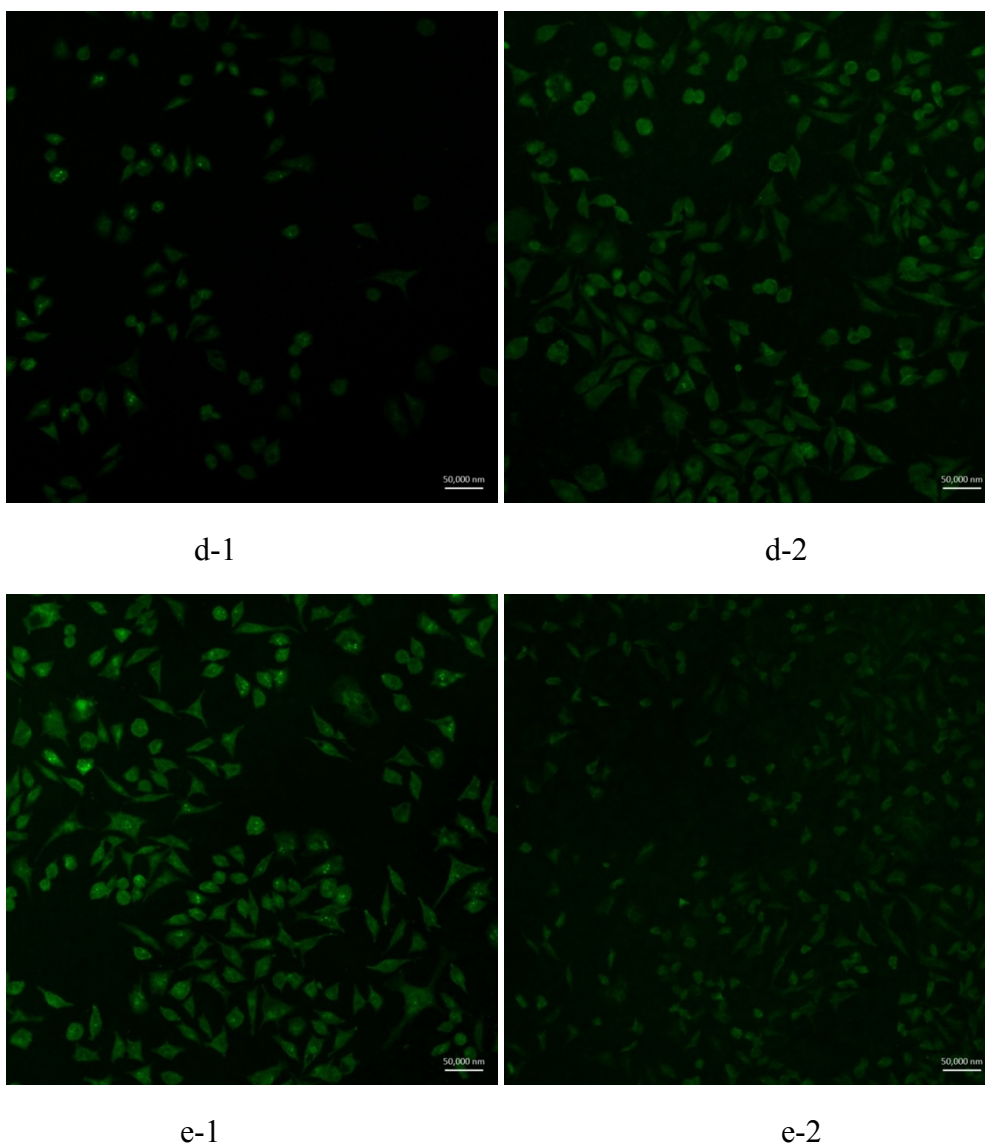
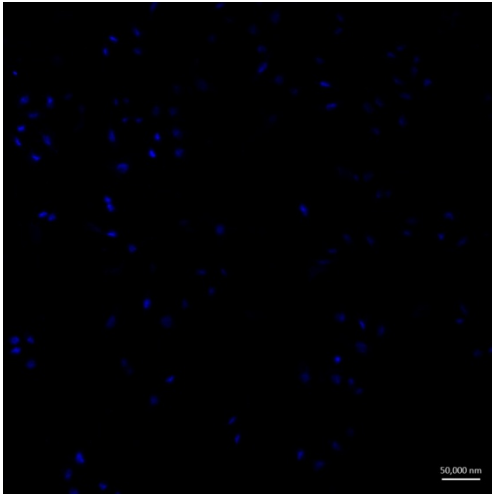
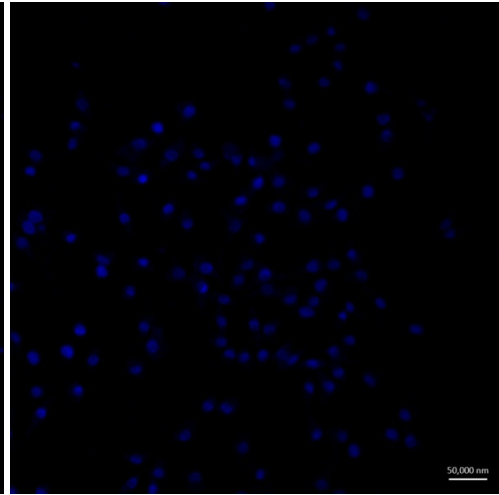


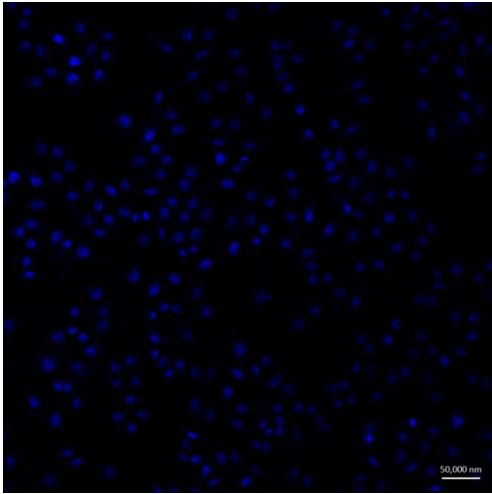
Figure S2. CLSM images of L929 cell at different time points on various surfaces. (a) SIBS, (b) SIBS-PDA, (c) SIBS-CS, (d) SIBS-HA, and (e) SIBS-CS-g-HA, after incubation for 1 day and 2 days and stained for actin (green). (Size of the scale bars: 50  $\mu$ m)



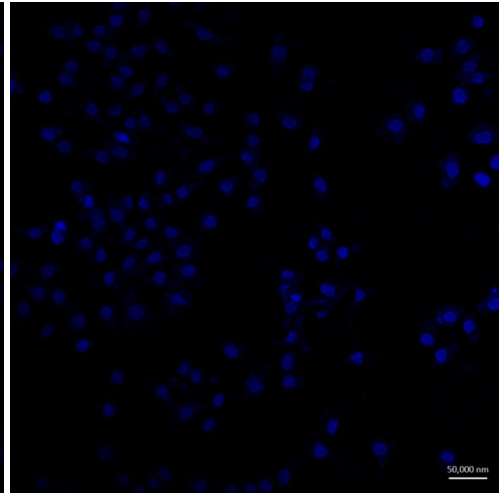
a-1



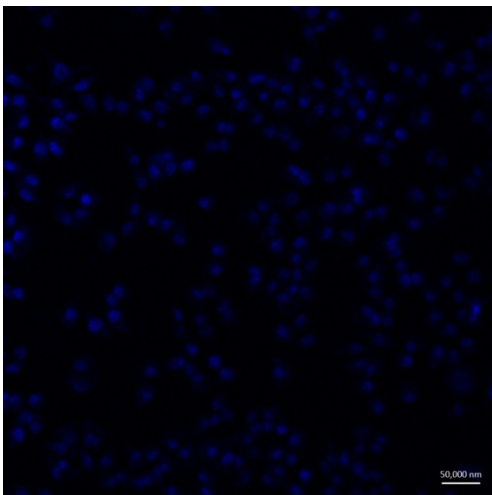
a-2



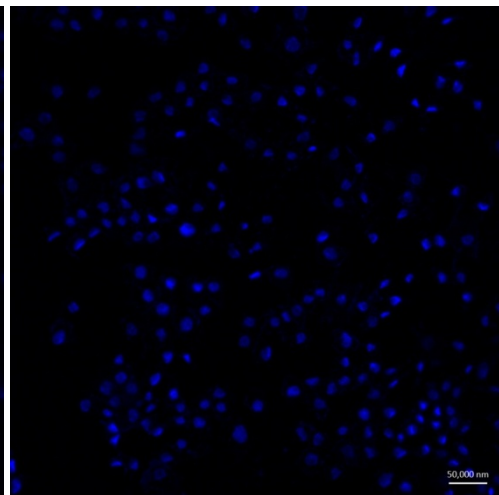
b-1



b-2



c-1



c-2

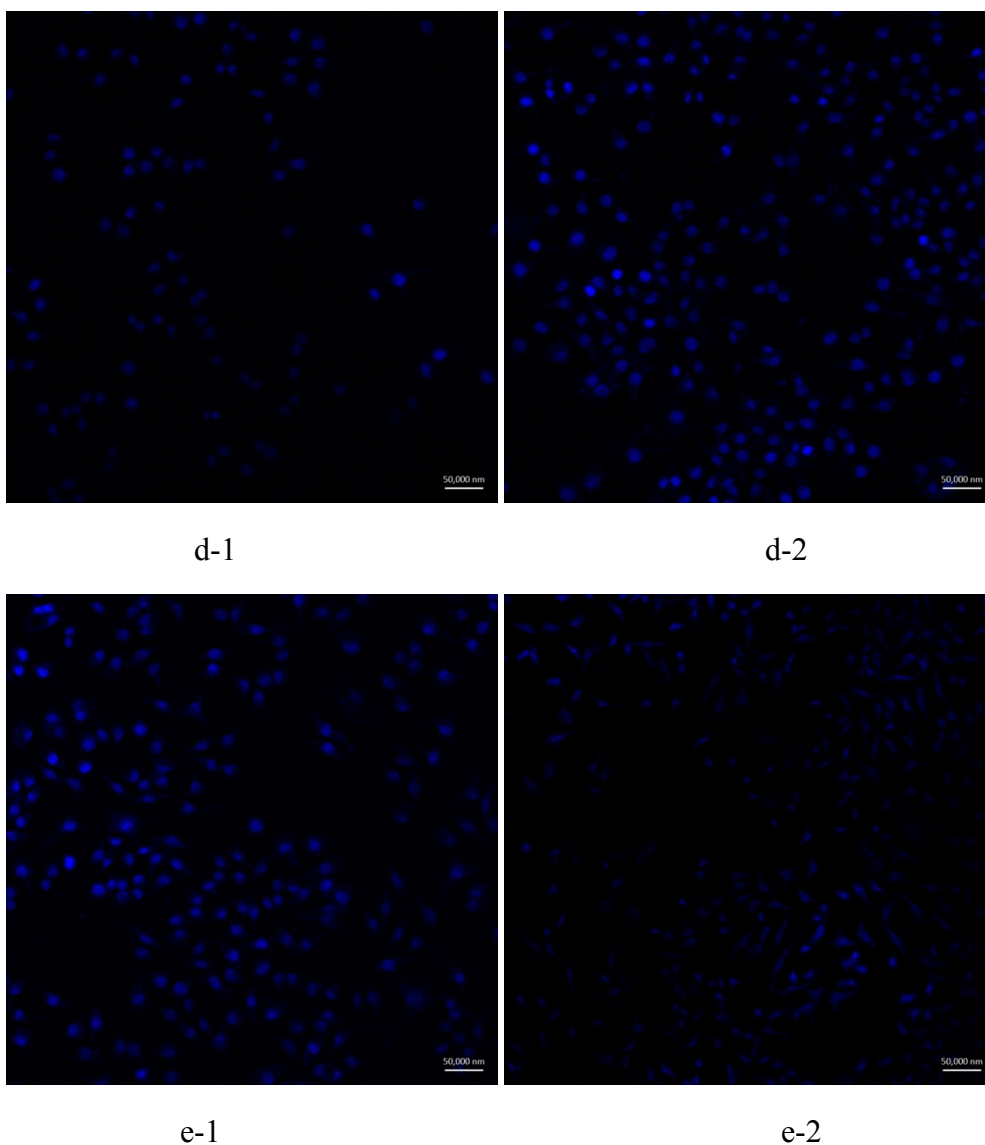


Figure S3. CLSM images of L929 cell at different time points on various surfaces. (a) SIBS, (b) SIBS-PDA, (c) SIBS-CS, (d) SIBS-HA, and (e) SIBS-CS-g-HA, after incubation for 1 day and 2 days and stained for nuclei (blue). (Size of the scale bars: 50  $\mu\text{m}$ )