

## Supporting Information

### Self-supported construction of 3D CdMoO<sub>4</sub> hierarchical structures from nanoplates with enhanced photocatalytic properties

Wenshou Wang,<sup>a,b,c</sup> Jianxun Cui,<sup>a</sup> Liang Zhen,<sup>\*,a,c</sup> Wenzhu Shao,<sup>a</sup> and Zhonglin Chen<sup>b</sup>

<sup>a</sup> School of Materials Science and Engineering, Harbin Institute of Technology, Harbin 150001, China.

<sup>b</sup> State Key Laboratory of Urban Water Resources and Environment, School of Municipal & Environmental Engineering, Harbin Institute of Technology, Harbin 150090, China.

<sup>c</sup> MOE Key Laboratory of Micro-systems and Micro-structures Manufacturing, Harbin Institute of Technology, Harbin 150080, China

\* Corresponding author. Tel: +86-451-86412133; Fax: +86-451-86413922; E-mail: [lzhen@hit.edu.cn](mailto:lzhen@hit.edu.cn)

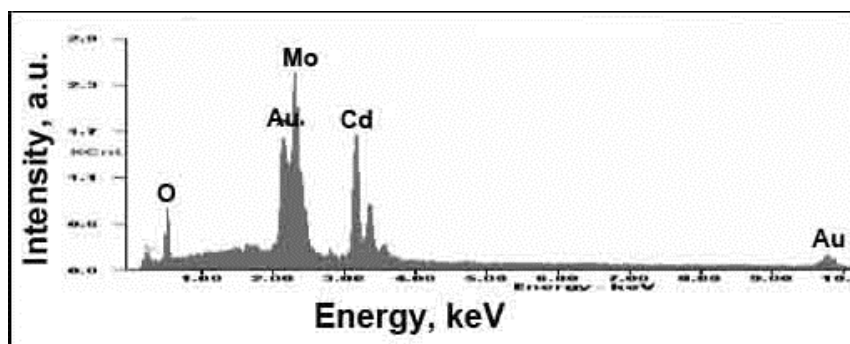


Fig. S1. A typical EDS spectrum of CdMoO<sub>4</sub> hierarchical structures.

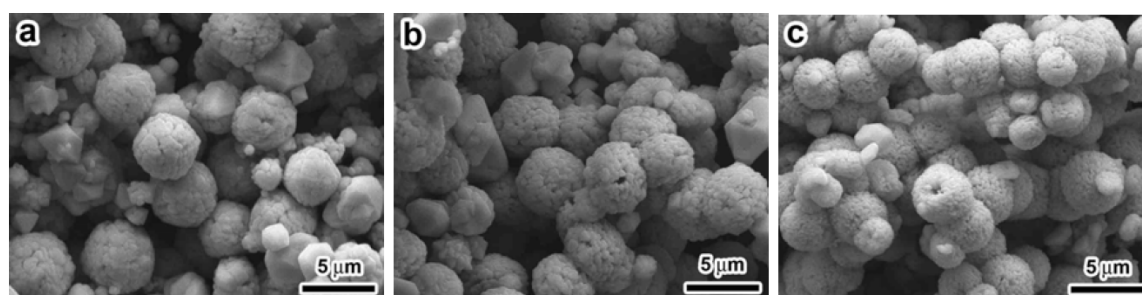
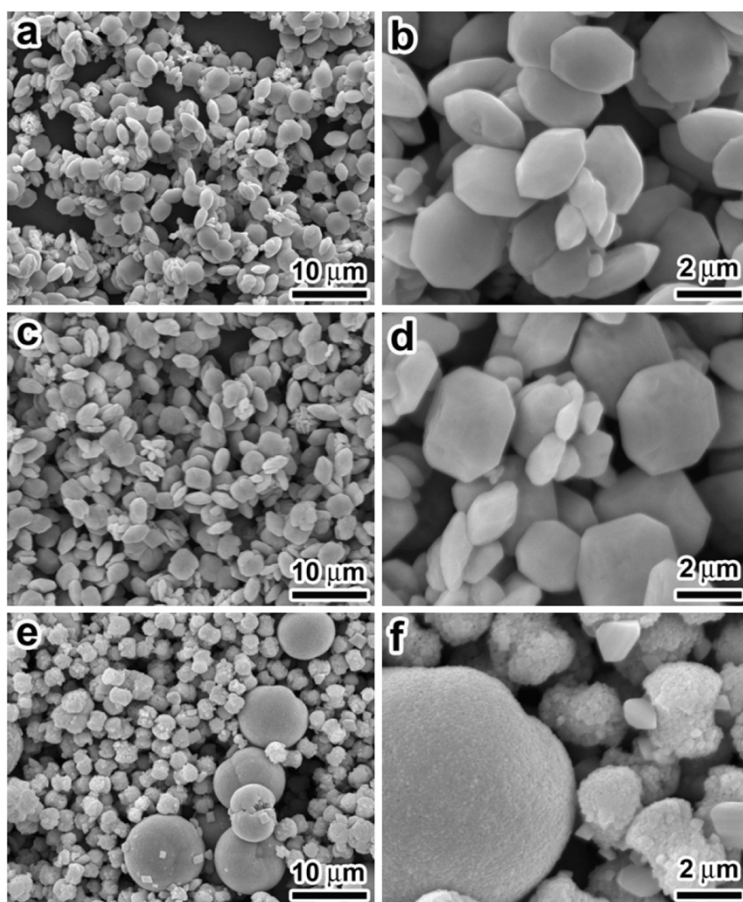


Fig. S2. SEM images of CdMoO<sub>4</sub> samples obtained at 200 °C using Na<sub>2</sub>MoO<sub>4</sub> as Mo reaction source with different concentrations of CdCl<sub>2</sub> aqueous solution. (a-c) 0.02 M, (d-f) 0.04 M and (g-i) 0.2 M.



**Fig. S3.** SEM images of  $\text{CdMoO}_4$  samples obtained at 200 °C and 0.04 M of  $\text{CdCl}_2$  aqueous solution with different pH value. (a, b) pH6, (c, d) pH7, and (e, f) pH10.

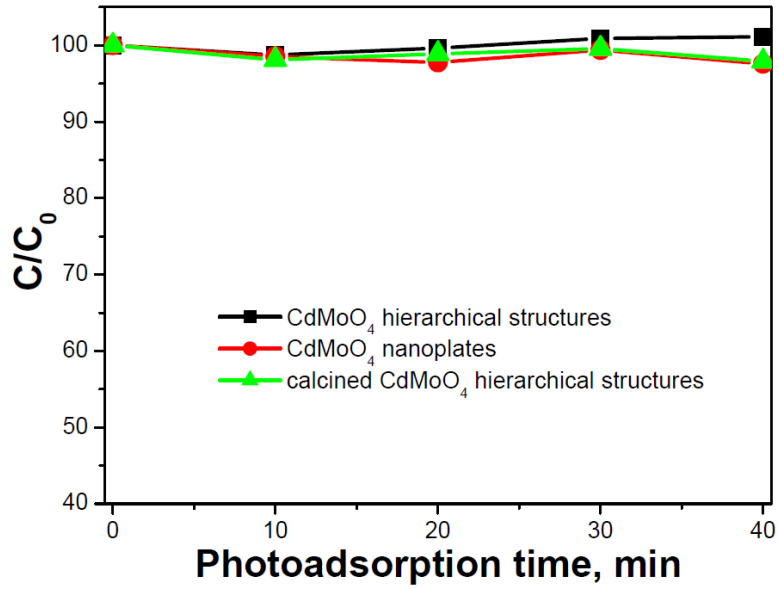


Fig. S4. Photoadsorption properties of various CdMoO<sub>4</sub> samples.

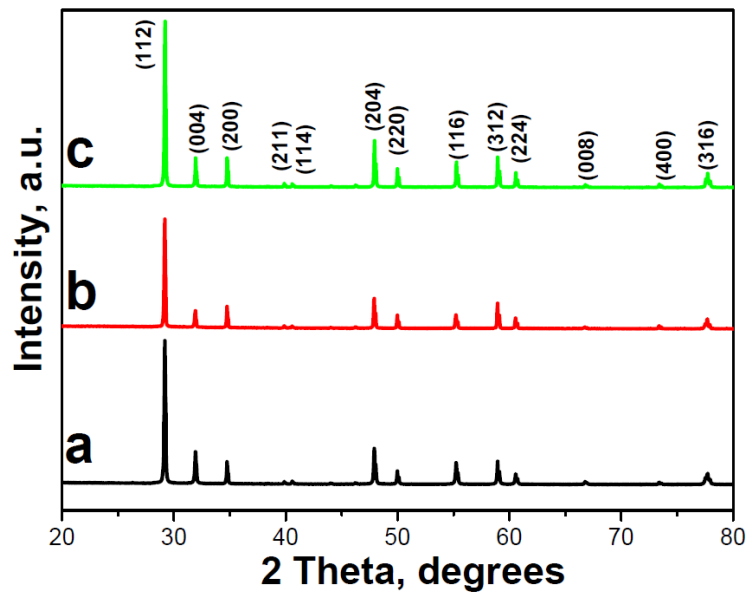


Fig. S5. XRD patterns of various CdMoO<sub>4</sub> samples. (a) CdMoO<sub>4</sub> hierarchical structures, (b) CdMoO<sub>4</sub> nanoplates, and (c) calcined CdMoO<sub>4</sub> hierarchical structures.