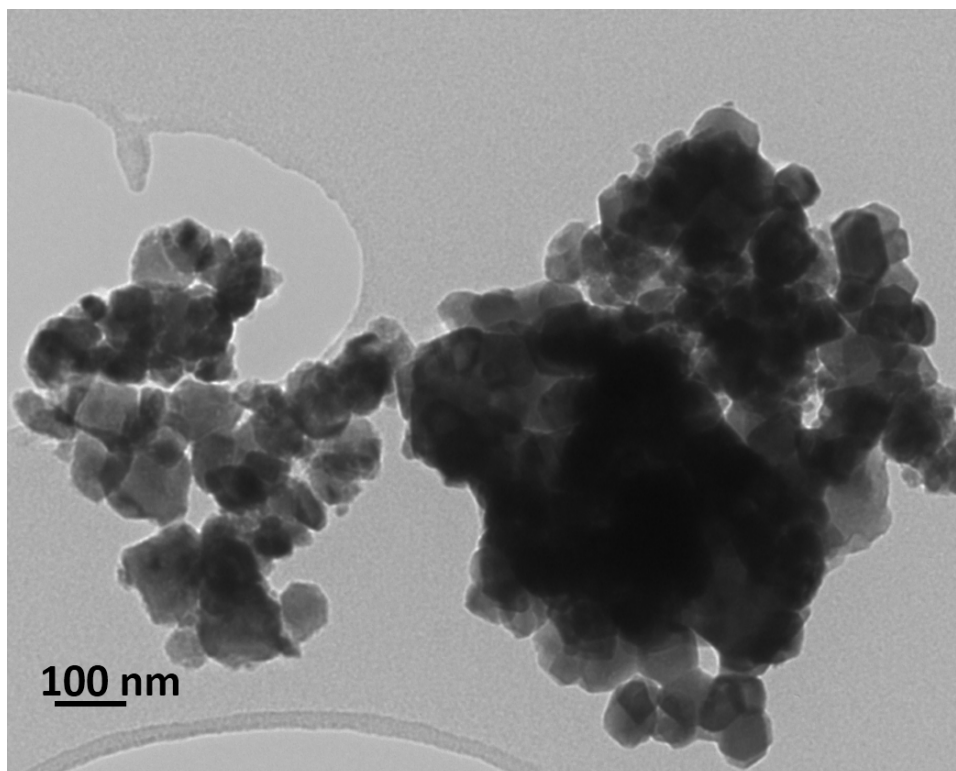


Electronic Supplementary Information

**Role of Iron Addition on Grain Boundary Conductivity of Pure and Samarium Doped  
Cerium Oxide**

P Arunkumar, S. Preethi, K Suresh Babu



Supplementary Figure 1: TEM image of sintered CeO<sub>2</sub> pellets exhibiting higher particle sizes.

Particles fused together upon sintering to minimize the interfacial energy.