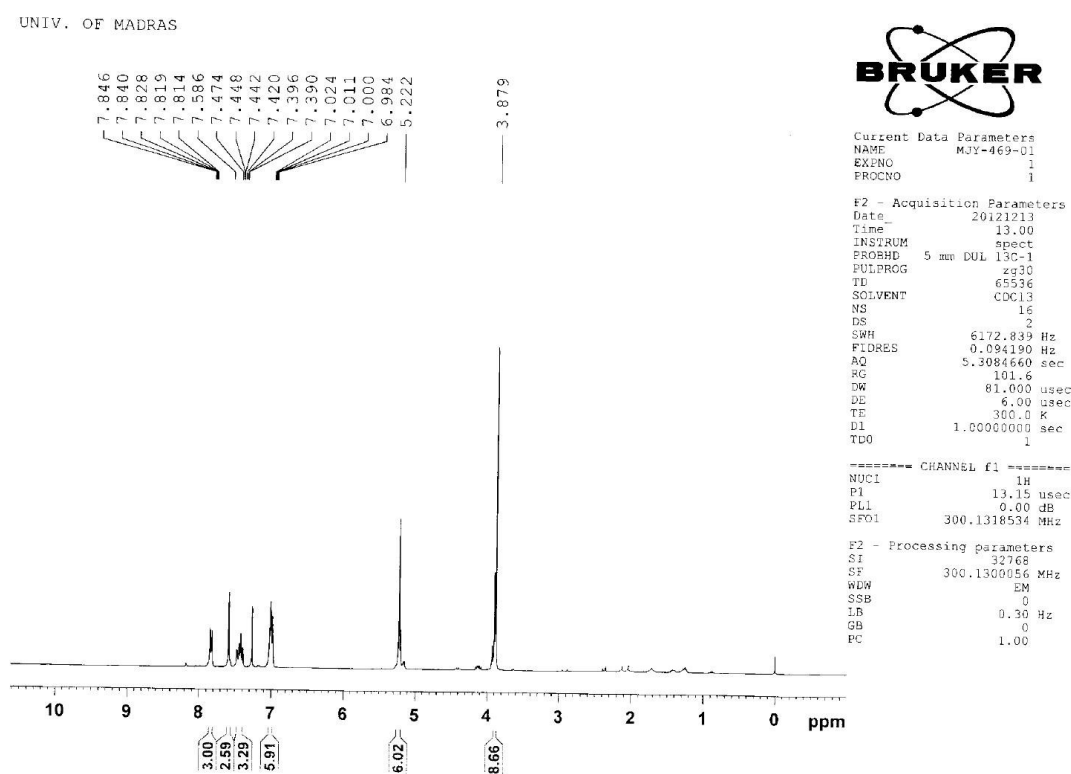
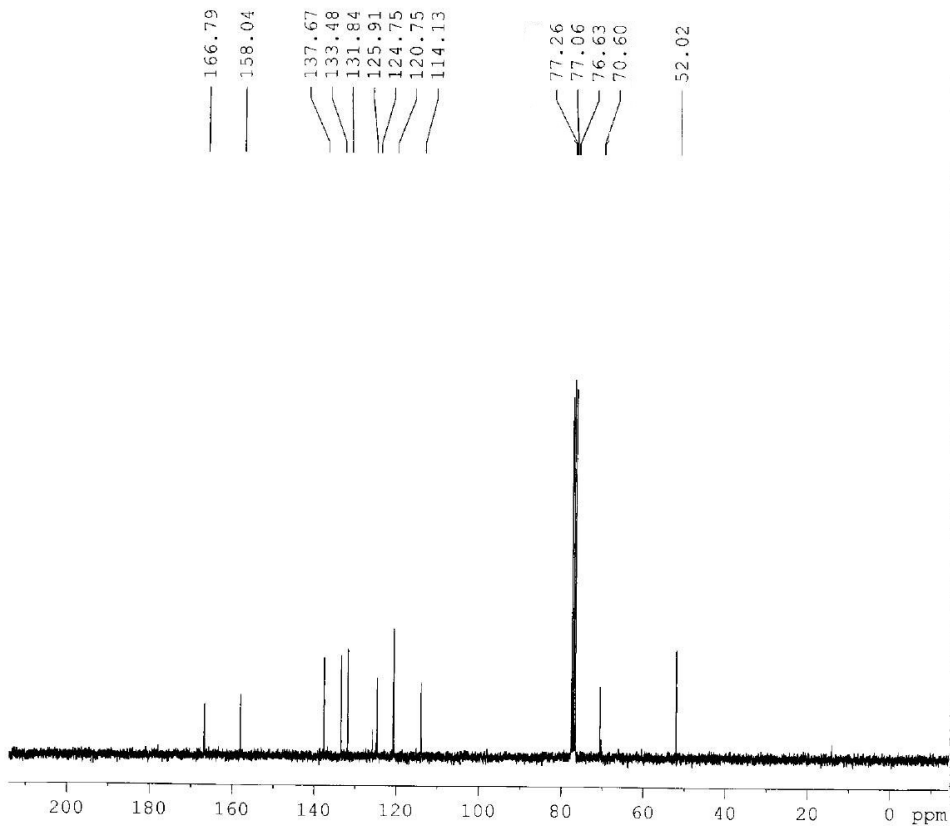


Supplementary data for the manuscript entitled Synthesis and In-vitro anti-arthritis activity of dendrimers with methyl, ethyl and isopropyl salicylates as surface groups



$^1\text{H}$  NMR (300 MHz,  $\text{CDCl}_3$ ,  $\text{Me}_4\text{Si}$ ) of compound **1**

UNIV. OF MADRAS



Current Data Parameters  
NAME MJY-469-01  
EXNO 2  
PROCNO 1

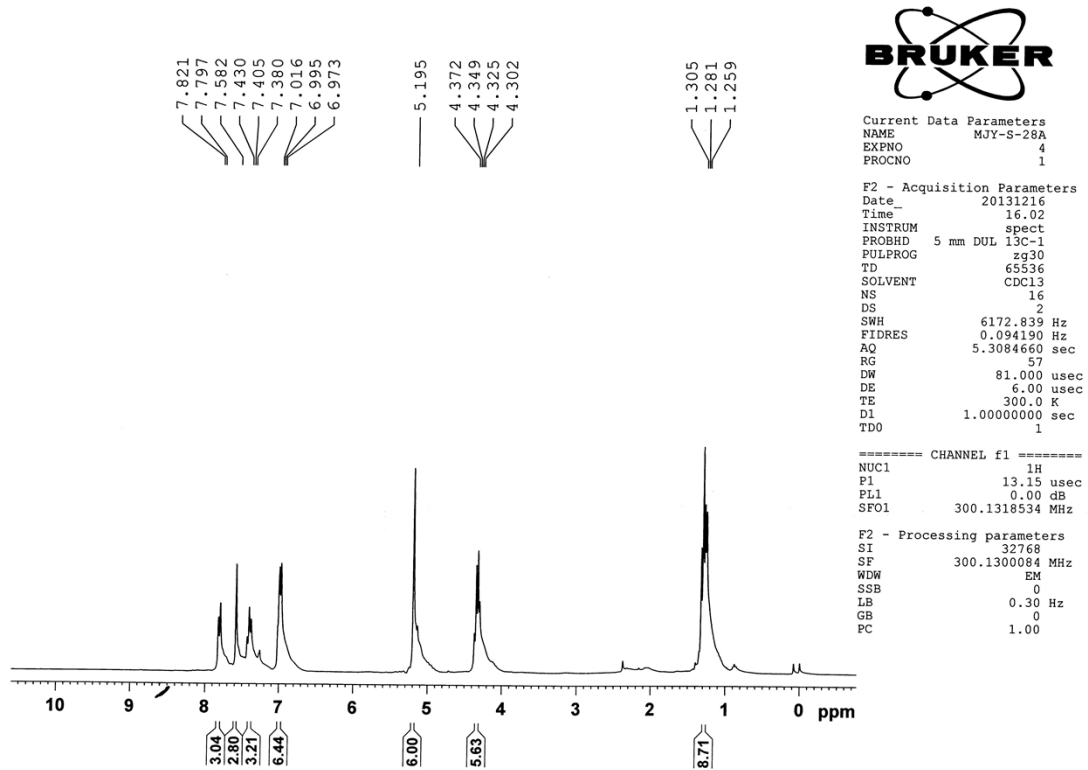
F2 - Acquisition Parameters  
Date\_ 20121213  
Time\_ 13.09  
INSTRUM spect  
PROBHD 5 mm DUL 13C-1  
PULPROG zgpg30  
TD 65536  
SOLVENT CDCl3  
NS 113  
DS 4  
SWH 17985.611 Hz  
FIDRES 0.274439 Hz  
AQ 1.8219508 sec  
RG 574.7  
DW 27.800 usec  
DE 6.00 usec  
TE 300.0 K  
D1 2.0000000 sec  
d11 0.0300000 sec  
DELTA 1.89999998 sec  
TD0 1

==== CHANNEL f1 =====  
NUC1 13C  
P1 9.30 usec  
PL1 0.00 dB  
SFO1 75.4752953 MHz

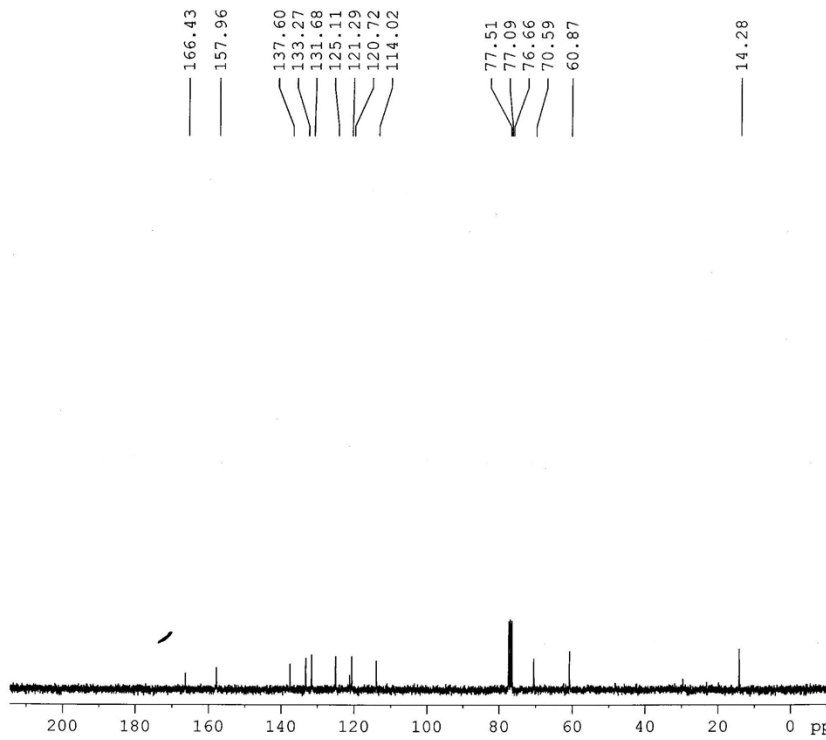
==== CHANNEL f2 =====  
CPDPRG2 waltz16  
NUC2 1H  
PCPD2 80.00 usec  
PL2 0.00 dB  
PL12 15.68 dB  
PL13 16.00 dB  
SFO2 300.1312005 MHz

F2 - Processing parameters  
SI 32788  
SF 75.4677490 MHz  
WDW EM  
SSB 0  
LB 1.00 Hz  
GB 0  
PC 1.40

$^{13}\text{C}$  NMR (75 MHz,  $\text{CDCl}_3$ ,  $\text{Me}_4\text{Si}$ ) of compound 1



$^1\text{H}$  NMR (300 MHz,  $\text{CDCl}_3$ ,  $\text{Me}_4\text{Si}$ ) of compound **2**



```

Current Data Parameters
NAME      MJY-S-28A
EXPNO    2
PROCNO   1

F2 - Acquisition Parameters
Date_    20131216
Time     15.58
INSTRUM  spect
PROBHD   5 mm DUL 13C-1
PULPROG  zgpg30
TD       65536
SOLVENT  CDCl3
NS       30
DS       4
SWH      17985.611 Hz
FIDRES   0.274439 Hz
AQ       1.8219508 sec
RG       406.4
DW       27.800 usec
DE       6.00 usec
TE       300.0 K
D1       2.00000000 sec
d11      0.03000000 sec
DELTA    1.89999998 sec
TDO      1

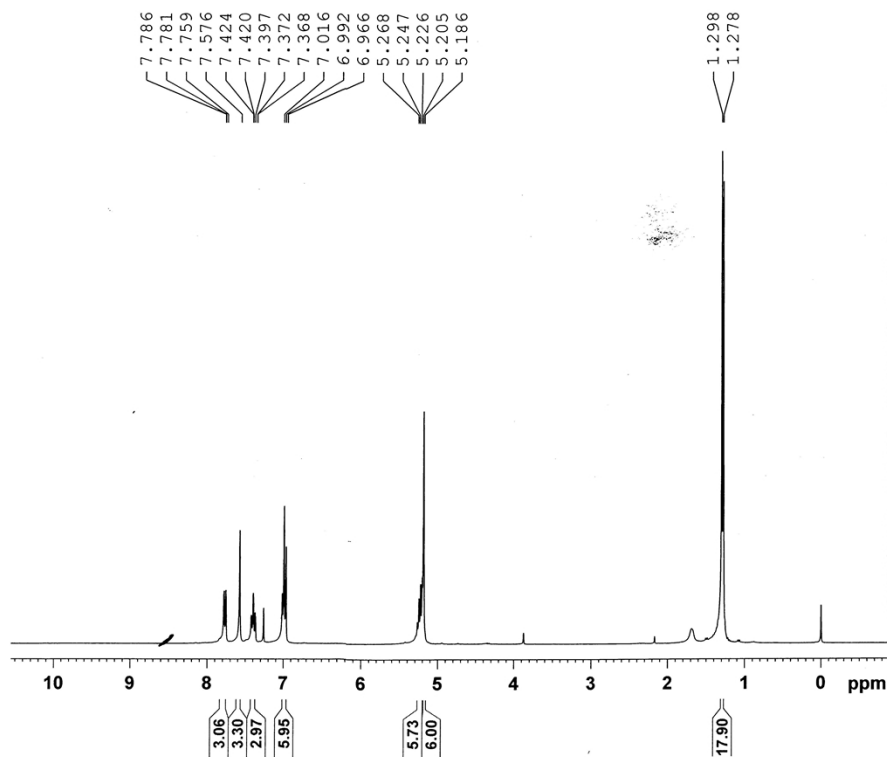
===== CHANNEL f1 =====
NUC1     13C
F1       9.30 usec
PL1      0.00 dB
SF01     75.4752953 MHz

===== CHANNEL f2 =====
CPDPRG2  waltz16
NUC2     1H
PCPD2    80.00 usec
PL2      0.00 dB
PL12     15.68 dB
PL13     16.00 dB
SF02     300.1312005 MHz

F2 - Processing parameters
SI       32768
SF       75.4677490 MHz
WDW      EM
SSB      0
LB       1.00 Hz
GB       0
PC       1.40

```

<sup>13</sup>C NMR (75 MHz, CDCl<sub>3</sub>, Me<sub>4</sub>Si) of compound 2



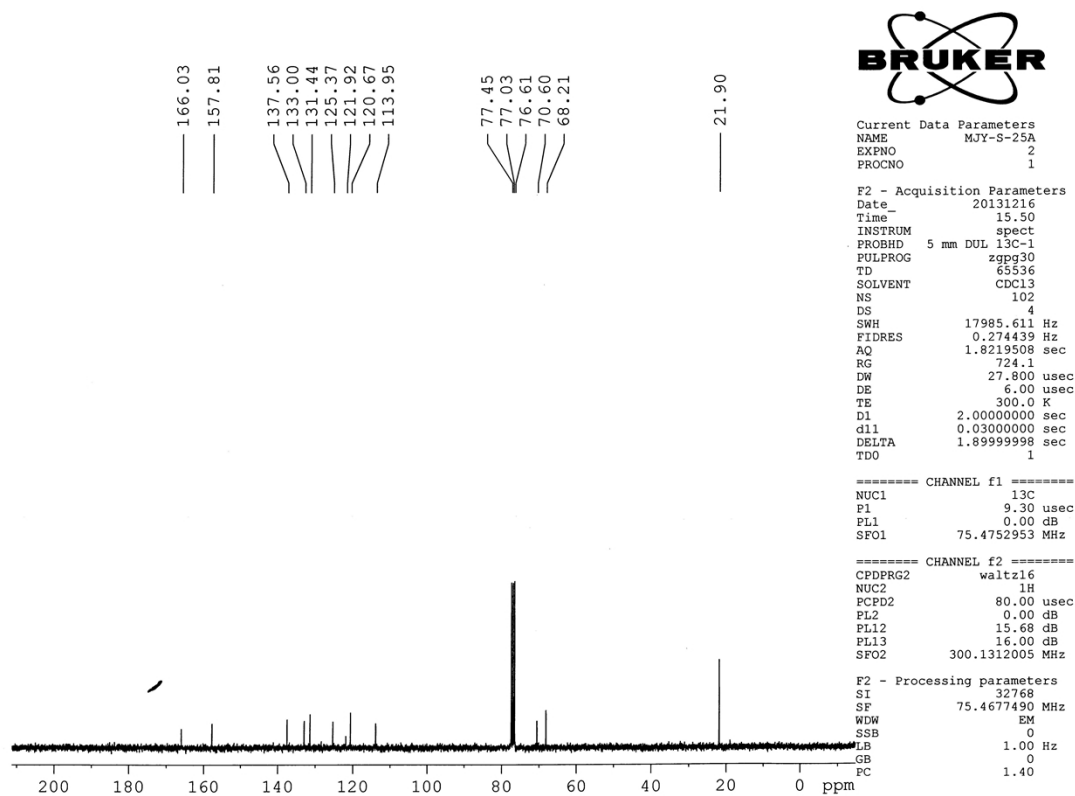
Current Data Parameters  
 NAME MJY-S-25A  
 EXPNO 1  
 PROCNO 1

F2 - Acquisition Parameters  
 Date\_ 20130916  
 Time\_ 15.41  
 INSTRUM spect  
 PROBHHD 5 mm DUL 13C-1  
 PULPROG zg30  
 TD 65536  
 SOLVENT CDCl3  
 NS 16  
 DS 2  
 SWH 6172.839 Hz  
 FIDRES 0.094190 Hz  
 AQ 5.3084660 sec  
 RG 143.7  
 DW 81.000 usec  
 DE 6.00 usec  
 TE 300.0 K  
 D1 1.00000000 sec  
 TD0 1

===== CHANNEL f1 =====  
 NUC1 1H  
 P1 13.15 usec  
 PL1 0.00 dB  
 SFO1 300.1318534 MHz

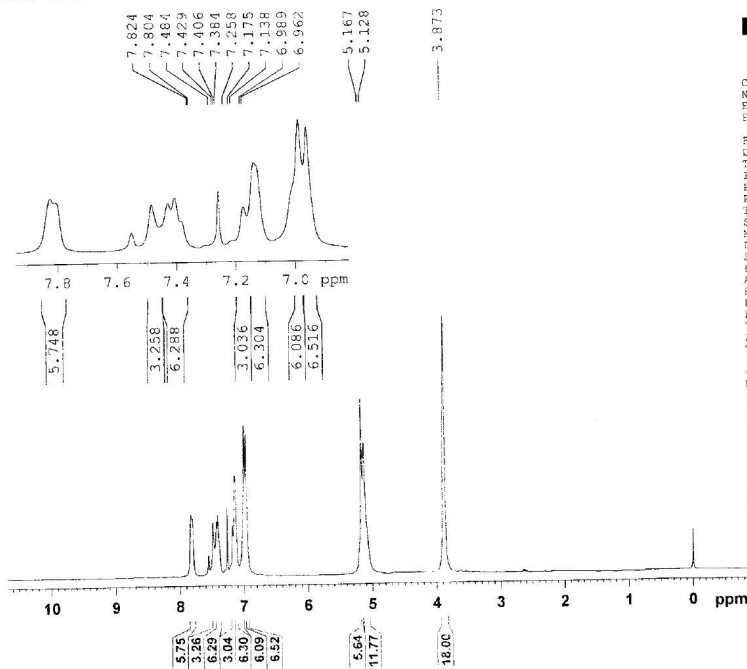
F2 - Processing parameters  
 SI 32768  
 SF 300.1300065 MHz  
 WDW EM  
 SSB 0  
 LB 0.30 Hz  
 GB 0  
 PC 1.00

$^1\text{H}$  NMR (300 MHz,  $\text{CDCl}_3$ ,  $\text{Me}_4\text{Si}$ ) of compound **3**



$^{13}\text{C}$  NMR (75 MHz,  $\text{CDCl}_3$ ,  $\text{Me}_4\text{Si}$ ) of compound **3**

UNIV OF MADRAS



Current Data Parameters  
NAME M07-S-181  
EXTNO 1  
PROCNO 1

F2 - Acquisition Parameters  
Date 20130829  
Time 20.00  
INSTRUM spect  
PROBHD 5 mm DUL 13C-1  
PULPROG zg30  
TD 65536  
SOLVENT CDCl3  
NS 16  
DS 2  
SWH 6172.835 Hz  
FIDRES 0.094190 Hz  
AQ 3.3084660 sec  
RG 114  
DW 81.000 usec  
DE 6.00 usec  
TE 300.0 K  
F1 1.30000000 sec  
TD0 1

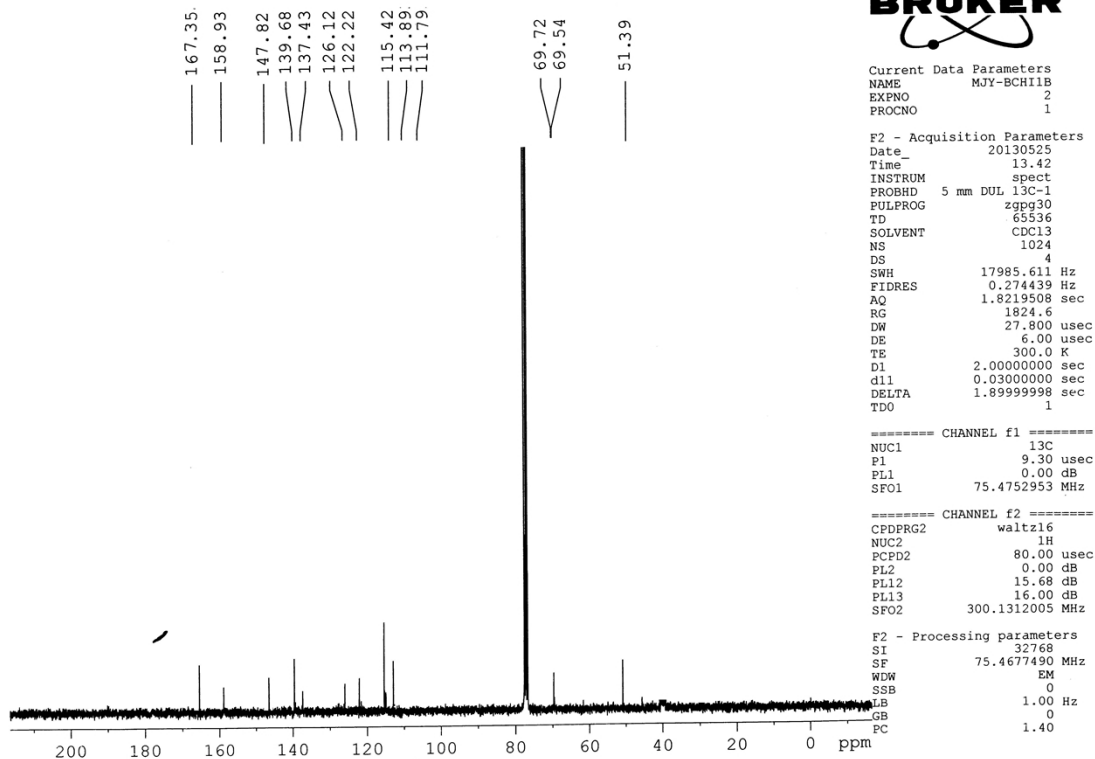
===== CHANNEL f1 =====  
NUC1 1H  
P1 13.15 usec  
PL1 0.00 dB  
SFO1 300.1318534 MHz

F2 - Processing parameters  
SI 32768  
SF 300.1300075 MHz  
WDW EM  
SSB 0  
LB 0.30 Hz  
GB 0  
PC 1.00

$^1\text{H}$  NMR (300 MHz,  $\text{CDCl}_3$ ,  $\text{Me}_4\text{Si}$ ) of compound **4**

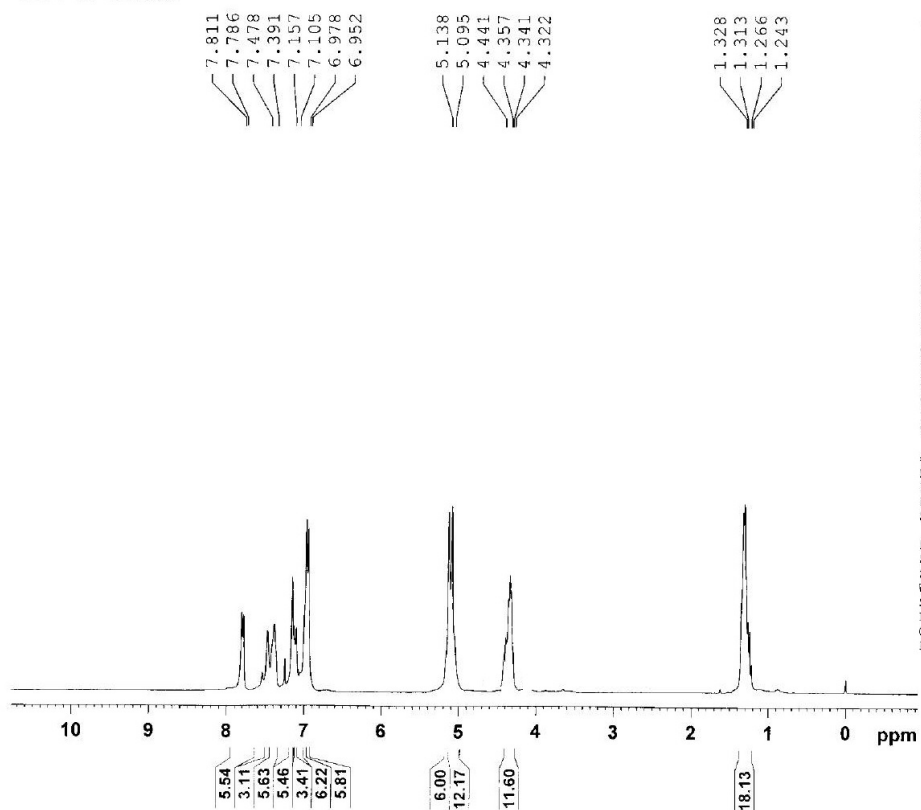


UNIV OF MADRAS



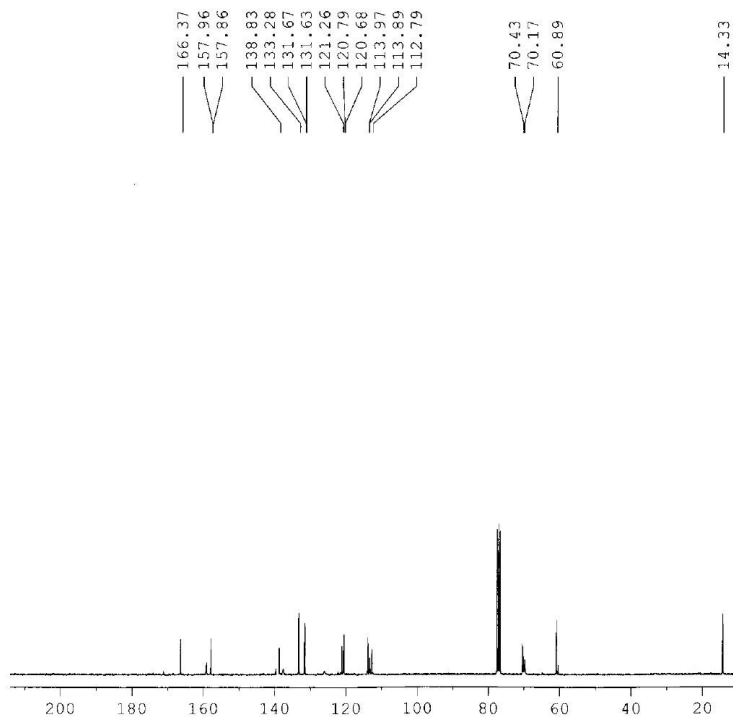
$^{13}\text{C}$  NMR (75 MHz,  $\text{CDCl}_3$ ,  $\text{Me}_4\text{Si}$ ) of compound 4

UNIV OF MADRAS



$^1\text{H}$  NMR (300 MHz,  $\text{CDCl}_3$ ,  $\text{Me}_4\text{Si}$ ) of compound **5**

UNIV OF MADRAS



Current Data Parameters  
NAME MJY-S-29  
EXPNO 1  
PROCNO 1  
F2 - Acquisition Parameters  
Date 20130914  
Time 14.02  
INSTRUM spect  
PROBHD 5 mm DUL 13C-1  
PULPROG zgpg30  
TD 65536  
SOLVENT CDCl3  
NS 974  
DS 4  
SWH 17985.611 Hz  
FIDRES 0.274439 Hz  
AQ 1.8219508 sec  
RG 4096  
EW 27.800 usec  
DE 6.00 usec  
TE 300.0 K  
D1 2.0000000 sec  
d11 0.0300000 sec  
DELTA 1.8999999 sec  
TD0 1

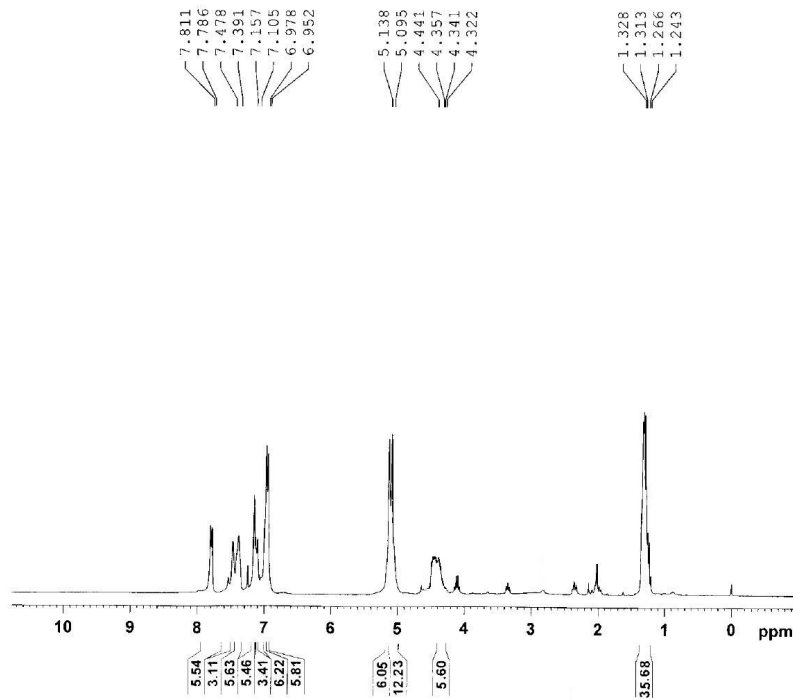
----- CHANNEL f1 -----  
NUC1 13C  
P1 9.30 usec  
PL1 0.00 dB  
SFO1 75.4752953 MHz

----- CHANNEL f2 -----  
CPDPRG2 waltz16  
NUC2 1H  
PCPD2 80.00 usec  
PL2 0.00 dB  
PL12 15.66 dB  
PL13 16.00 dB  
SFO2 300.1312005 MHz

F2 - Processing parameters  
SI 32768  
SF 75.4677490 MHz  
WDW EM  
SSB 0  
LB 1.00 Hz  
GB 0  
PC 1.40

$^{13}\text{C}$  NMR (75 MHz,  $\text{CDCl}_3$ ,  $\text{Me}_4\text{Si}$ ) of compound 5

UNIV OF MADRAS



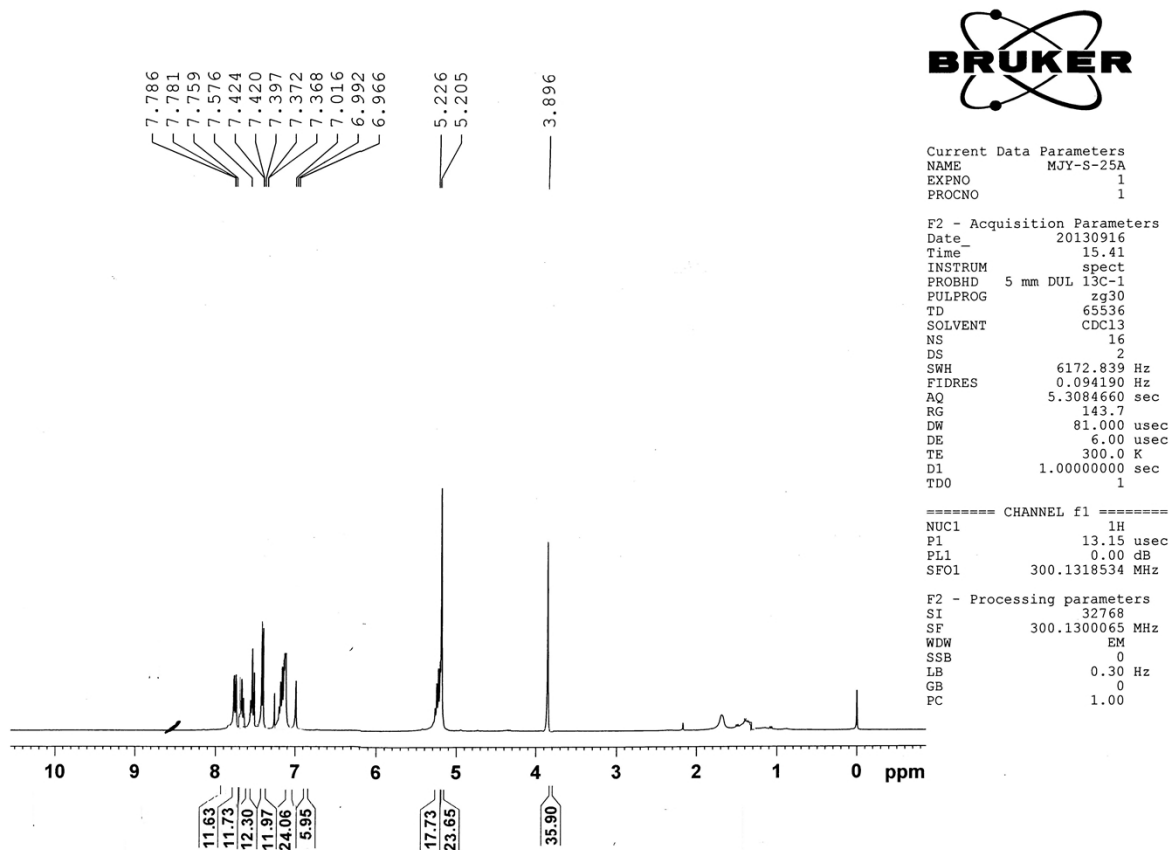
Current Data Parameters  
NAME: M07-S-29  
EXPNO: 2  
PROCNO: 1

F2 - Acquisition Parameters  
Date\_: 20130914  
Time: 14.03  
INSTRUM: spect  
PROBHD: 5 mm DUL 13C-1  
PULPROG: zg30  
TD: 65536  
SOLVENT: CDCl3  
NS: 2  
DS: 2  
SWH: 6172.839 Hz  
FIDRES: 0.094190 Hz  
AQ: 5.3084660 sec  
RG: 32  
DW: 81.000 usec  
DE: 6.00 usec  
TE: 300.0 K  
EI: 1.00000000 sec  
TDO: 1

===== CHANNEL f1 =====  
NUC1: 1H  
P1: 13.15 usec  
PL1: 0.00 dB  
SFO1: 300.1318534 MHz

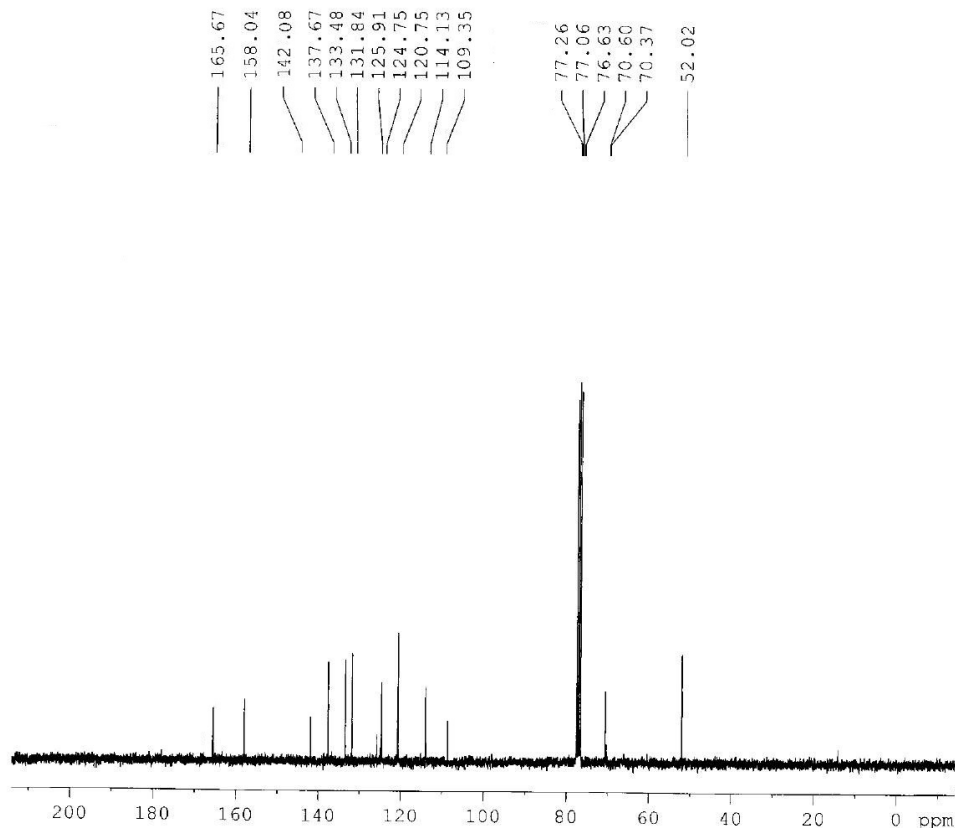
F2 - Processing parameters  
SI: 32768  
SF: 300.1300094 MHz  
WDW: EM  
SSB: 0  
LB: 0.30 Hz  
GB: 0  
PC: 1.00

$^1\text{H}$  NMR (300 MHz,  $\text{CDCl}_3$ ,  $\text{Me}_4\text{Si}$ ) of compound **6**



$^1\text{H}$  NMR (300 MHz,  $\text{CDCl}_3$ ,  $\text{Me}_4\text{Si}$ ) of compound 7

UNIV. OF MADRAS



Current Data Parameters  
NAME MJY-490  
EXPNO 2  
PROCNO 1

F2 - Acquisition Parameters  
Date\_ 20121218  
Time 10.09  
INSTRUM spect  
PROBHD 5 mm DUL 130-1  
PULPROG zgpg30  
TD 65536  
SOLVENT CDCl3  
NS 113  
DS 4  
SWH 17985.611 Hz  
FIDRES 0.274439 Hz  
AQ 1.8219508 sec  
RG 574.7  
DW 27.800 usec  
DE 6.00 usec  
TE 300.0 K  
D1 2.0000000 sec  
d11 0.0300000 sec  
DELTA 1.89999998 sec  
TDO 1

==== CHANNEL f1 =====  
NUC1 13C  
P1 9.30 usec  
PL1 0.00 dB  
SFO1 75.4752953 MHz

==== CHANNEL f2 =====  
CPDPRG2 waltz16  
NUC2 1H  
PCPD2 80.00 usec  
PL2 0.00 dB  
PL12 15.68 dB  
PL13 16.00 dB  
SFO2 300.1312005 MHz

F2 - Processing parameters  
SI 32768  
SF 75.4677490 MHz  
WDW EM  
SSB 0  
LB 1.00 Hz  
GB 0  
PC 1.40

$^{13}\text{C}$  NMR (75 MHz,  $\text{CDCl}_3$ ,  $\text{Me}_4\text{Si}$ ) of compound 7

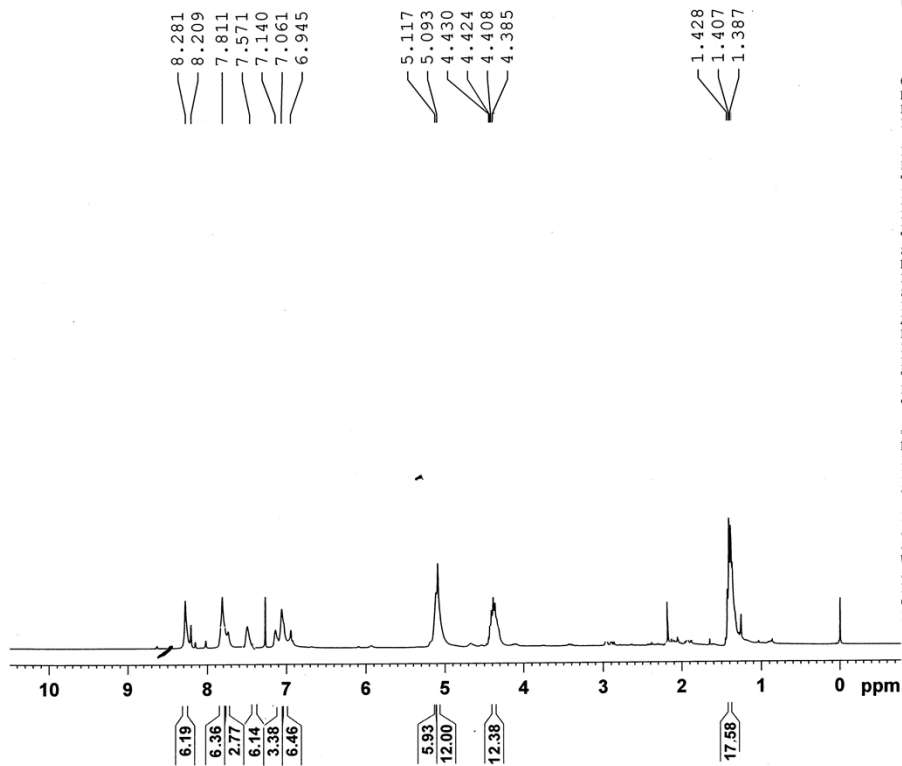


Current Data Parameters  
NAME MJY-B3CGISAE  
EXPNO 1  
PROCNO 1

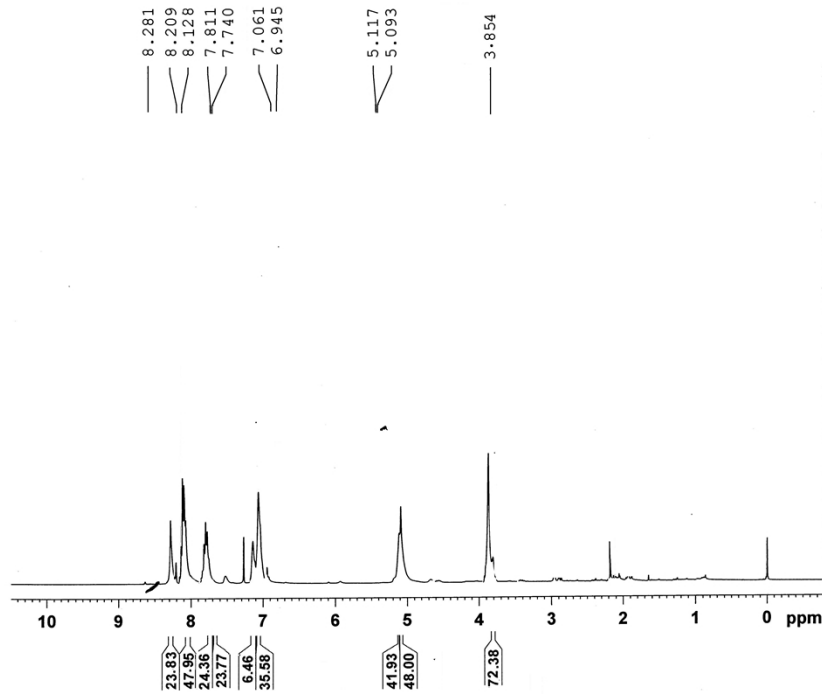
F2 - Acquisition Parameters  
Date\_ 20130908  
Time\_ 18.54  
INSTRUM spect  
PROBHD 5 mm DUL 13C-1  
PULPROG zg30  
TD 65536  
SOLVENT CDCl3  
NS 16  
DS 2  
SWH 6172.839 Hz  
FIDRES 0.094190 Hz  
AQ 5.3084660 sec  
RG 90.5  
DW 81.000 usec  
DE 6.00 usec  
TE 300.0 K  
D1 1.00000000 sec  
TD0 1

===== CHANNEL f1 =====  
NUC1 1H  
P1 13.15 usec  
PL1 0.00 dB  
SFO1 300.1318534 MHz

F2 - Processing parameters  
SI 32768  
SF 300.1300038 MHz  
WDW EM  
SSB 0  
LB 0.30 Hz  
GB 0  
PC 1.00



$^1\text{H}$  NMR (300 MHz,  $\text{CDCl}_3$ ,  $\text{Me}_4\text{Si}$ ) of compound **8**



Current Data Parameters  
NAME MJY-B3C35AM  
EXPNO 1  
PROCNO 1

F2 - Acquisition Parameters  
Date\_ 20130905  
Time 15.54  
INSTRUM spect  
PROBHD 5 mm DUL 13C-1  
PULPROG zg30  
TD 65536  
SOLVENT CDCl3  
NS 16  
DS 2  
SWH 6172.839 Hz  
FIDRES 0.0941190 Hz  
AQ 5.3084660 sec  
RG 90.5  
DW 81.000 usec  
DE 6.00 usec  
TE 300.0 K  
D1 1.00000000 sec  
TDO 1

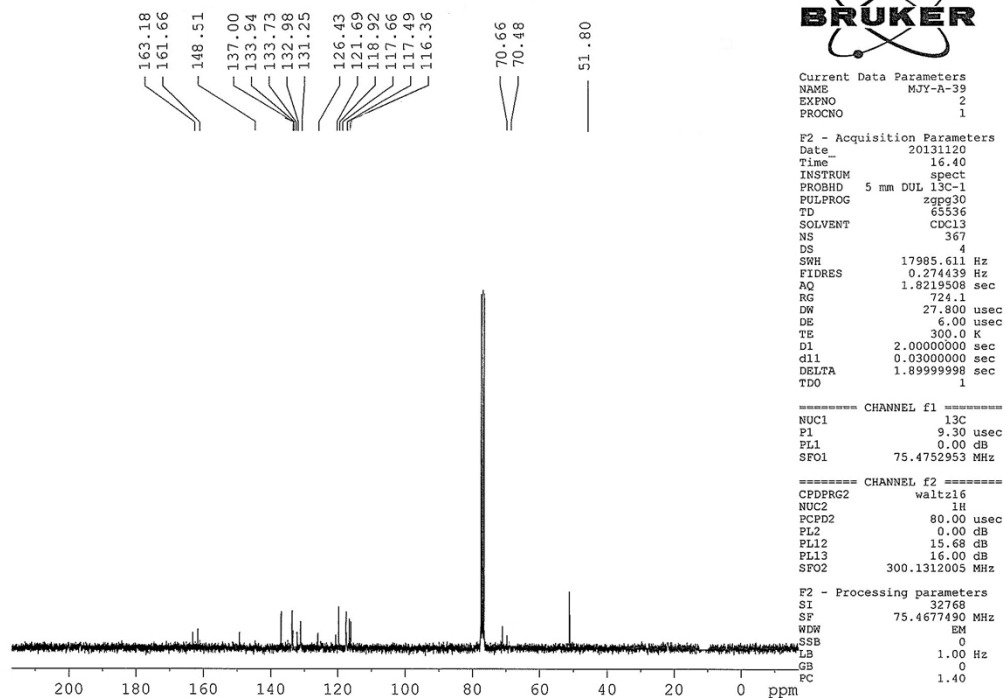
===== CHANNEL f1 =====  
NUC1 1H  
P1 13.15 usec  
PL1 0.00 dB  
SFO1 300.1318534 MHz

F2 - Processing parameters  
SI 32768  
SF 300.1300038 MHz  
WDW EM  
SSB 0  
LB 0.30 Hz  
GB 0  
PC 1.00

$^1\text{H}$  NMR (300 MHz,  $\text{CDCl}_3$ ,  $\text{Me}_4\text{Si}$ ) of compound **10**

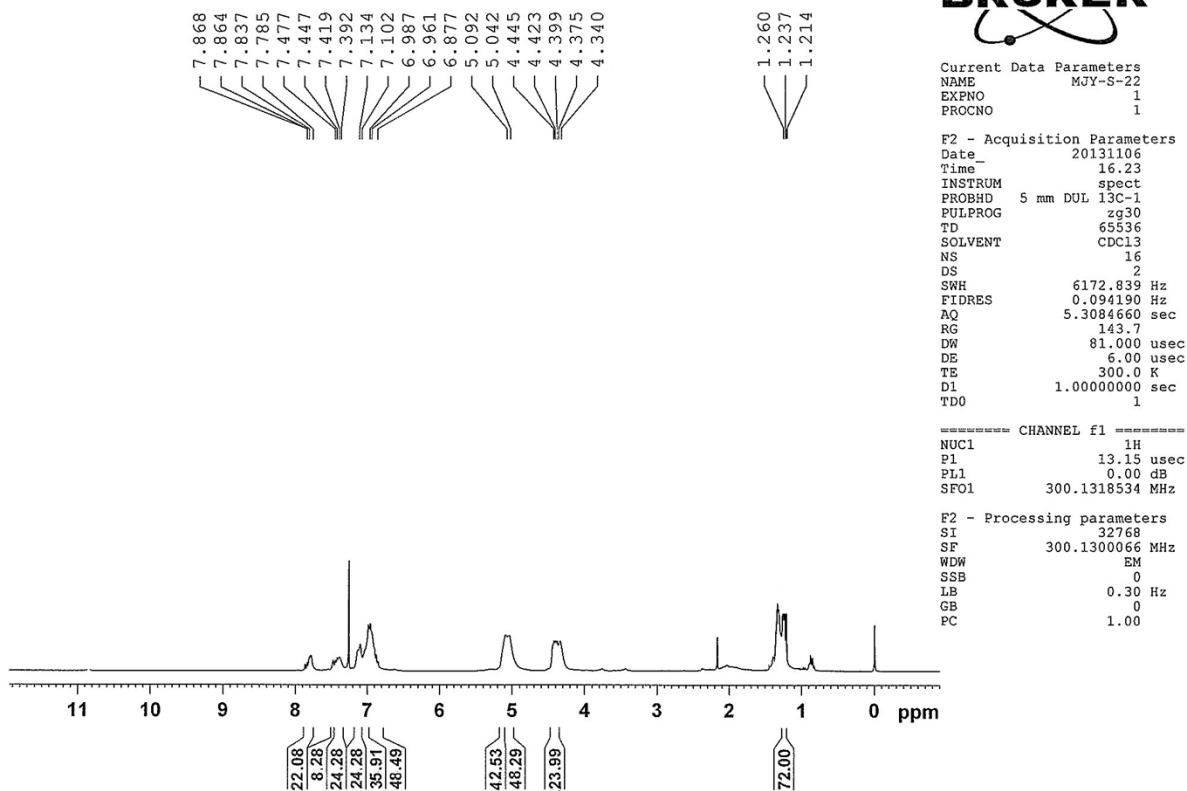


UNIV OF MADRAS



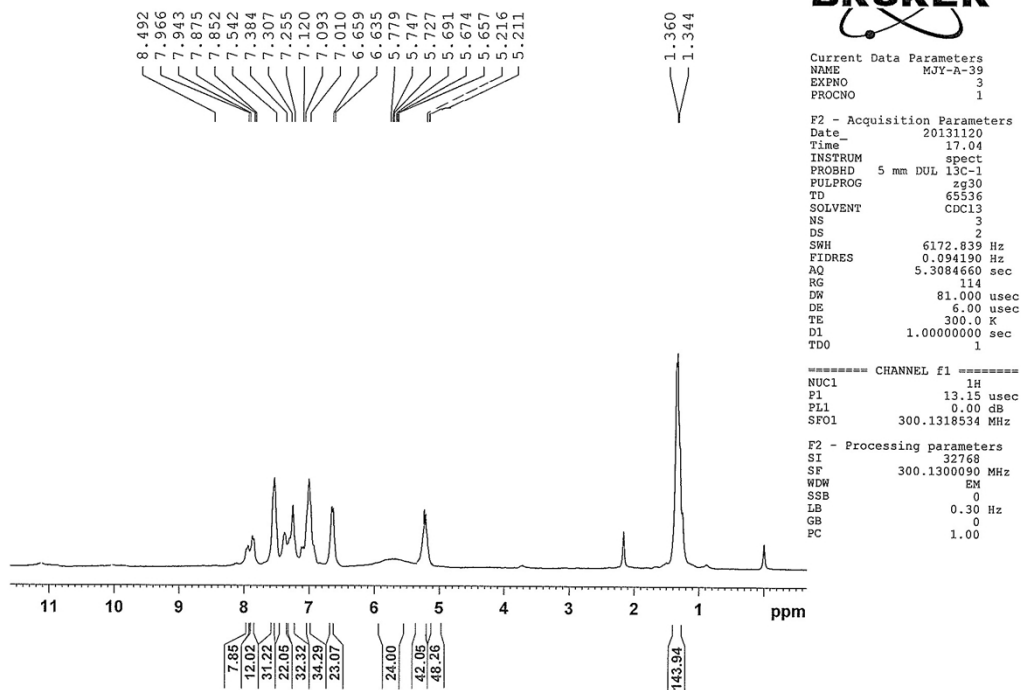
$^{13}\text{C}$  NMR (75 MHz,  $\text{CDCl}_3$ ,  $\text{Me}_4\text{Si}$ ) of compound **10**

UNIV OF MADRAS



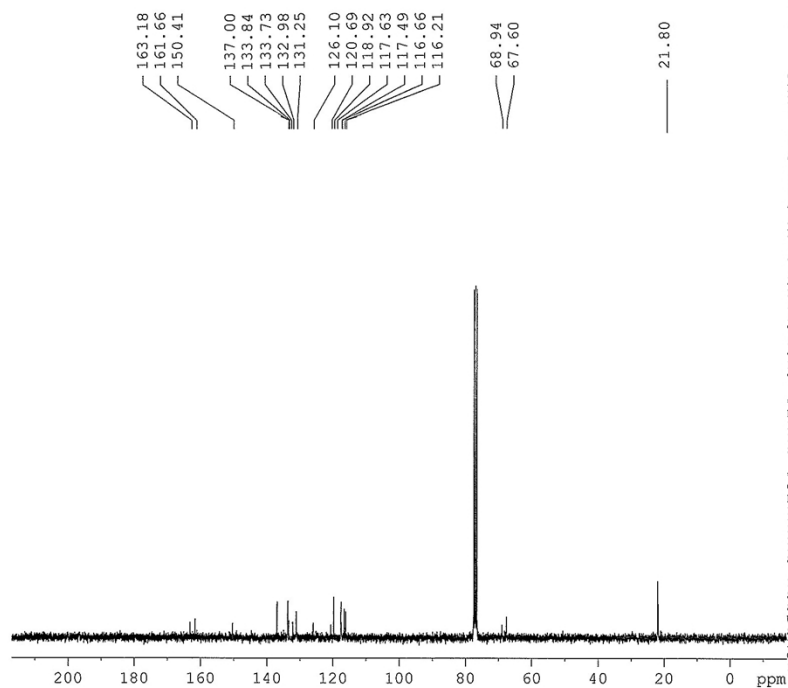
$^1\text{H}$  NMR (300 MHz,  $\text{CDCl}_3$ ,  $\text{Me}_4\text{Si}$ ) of compound **11**

UNIV OF MADRAS



<sup>1</sup>H NMR (300 MHz, CDCl<sub>3</sub>, Me<sub>4</sub>Si) of compound 12

UNIV OF MADRAS



```
Current Data Parameters
NAME      MJY-A-39
EXPNO    2
PROCNO   1

F2 - Acquisition Parameters
Date_    20131120
Time     16.40
INSTRUM  spect
PROBHD   5 mm DUL 13C-1
PULPROG  zgpg30
TD       65536
SOLVENT  cdcl3
NS       367
DS       4
SWH      17985.611 Hz
FIDRES   0.274439 Hz
AQ       1.8219508 sec
RG       724.1
DM       27.800 usec
DE       6.00 usec
TE       300.0 K
D1       2.00000000 sec
d11      0.03000000 sec
DELTA    1.89999998 sec
TDO      1

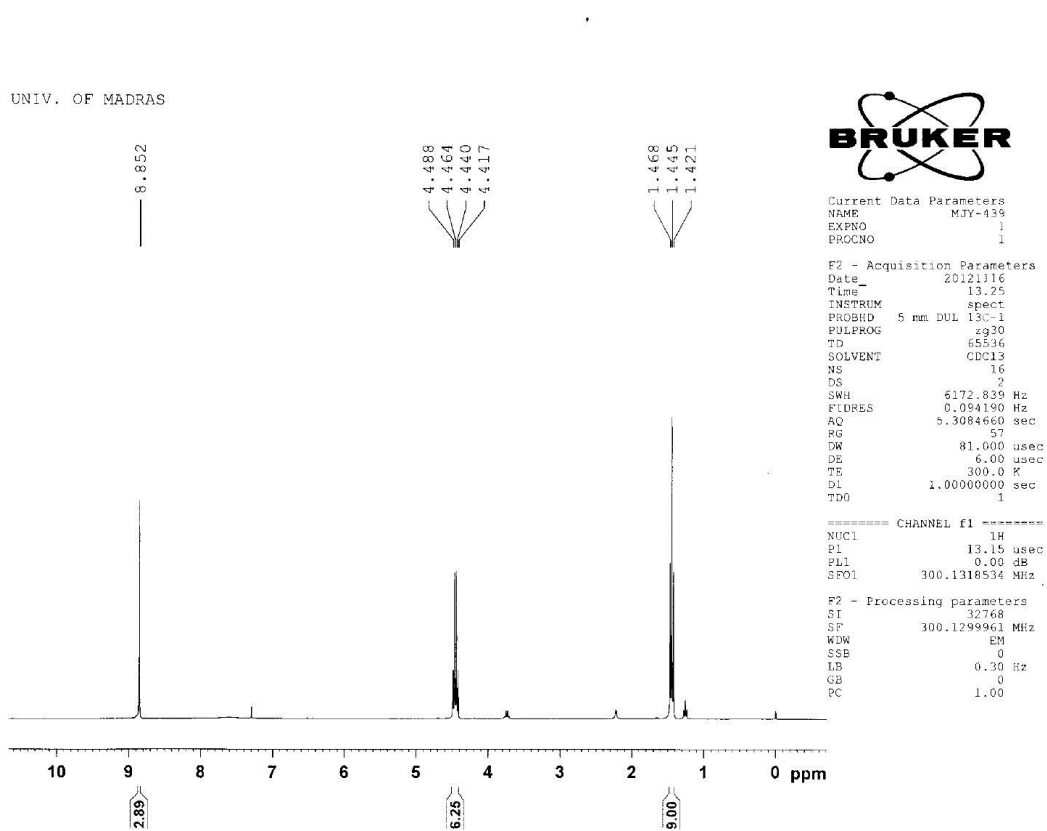
===== CHANNEL f1 =====
NUC1     13C
P1       9.30 usec
PL1      0.00 dB
SFO1     75.4752953 MHz

===== CHANNEL f2 =====
CPDPRG2  waltz16
NUC2     1H
PCPD2    80.00 usec
PL2      0.00 dB
PL12     15.68 dB
PL13     16.00 dB
SFO2     300.1312005 MHz

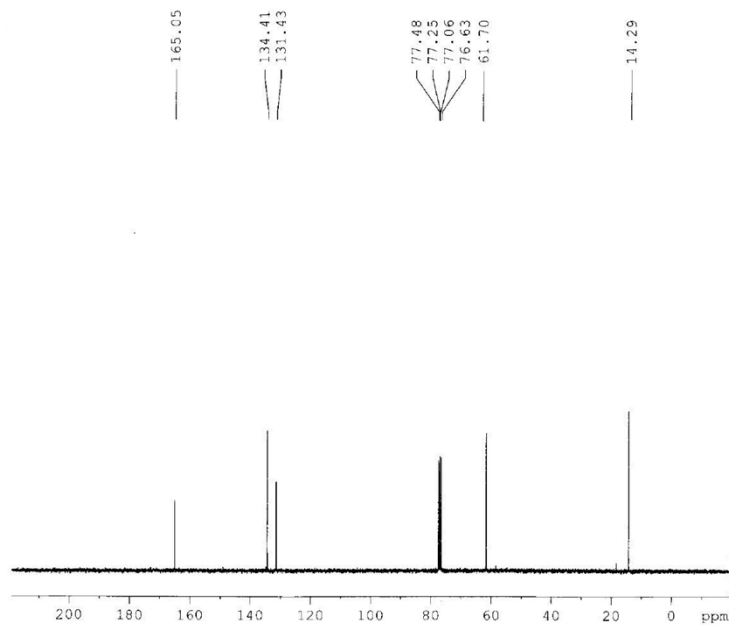
F2 - Processing parameters
SI       32768
SF       75.4677490 MHz
WDW      EM
SSB      0
LB       1.00 Hz
GB       0
PC       1.40
```

$^{13}\text{C}$  NMR (75 MHz,  $\text{CDCl}_3$ ,  $\text{Me}_4\text{Si}$ ) of compound **12**

<sup>1</sup>H NMR (300 MHz, CDCl<sub>3</sub>, Me<sub>4</sub>Si) of compound 14



UNIV. OF MADRAS



```
Current Data Parameters
NAME      MAY-439
EXPNO    2
PROCNO   1

F2 - Acquisition Parameters
Date_    20121116
Time     13.29
INSTRUM  spect
PROBHD   5 mm DDZ 13C-1
PULPROG  zgpg30
TD        65536
SOLVENT  CDCl3
NS        54
DS        4
SWH       17985.611 Hz
FIDRES    0.274439 Hz
AQ        1.8219508 sec
RG        2896.3
DS        27.800 usec
DE        6.00 usec
TE        300.0 K
T1        2.0000000 sec
d11       0.0300000 sec
DELTA    1.8999999 sec
TD0       1

===== CHANNEL f1 =====
NUC1      13C
P1        9.30 usec
PL1       0.00 dB
SFO1      75.4752953 MHz

===== CHANNEL f2 =====
CDPRPG   waltz16
NUC2      1H
PCPD2    80.00 usec
PL2       0.00 dB
PL12     15.68 dB
PL13     16.00 dB
SFO2     300.1312005 MHz

F2 - Processing parameters
SI        32768
SF        75.4677490 MHz
WDW       EM
SSB       0
LB        1.00 Hz
GB        0
PC        1.40
```

$^{13}\text{C}$  NMR (75 MHz,  $\text{CDCl}_3$ ,  $\text{Me}_4\text{Si}$ ) of compound 14

UNIV. OF MADRAS

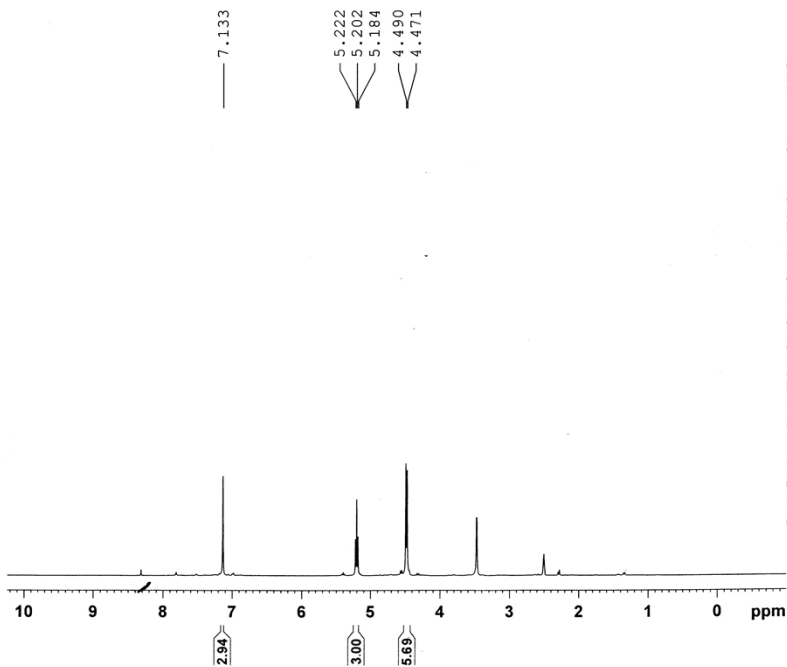


Current Data Parameters  
NAME MJY-452  
EXFNO 1  
PROCNO 1

F2 - Acquisition Parameters  
Date 20121130  
Time 14.49  
INSTRUM spect  
PROBHD 5 mm DUL 13C-1  
PULPROG zg30  
TD 65536  
SOLVENT DMSO  
NS 16  
DS 2  
SWH 6172.839 Hz  
FIDRES 0.094190 Hz  
AQ 5.3084660 sec  
RG 40.3  
DW 81.000 usec  
DE 6.00 usec  
TE 300.0 K  
D1 1.0000000 sec  
TDO 1

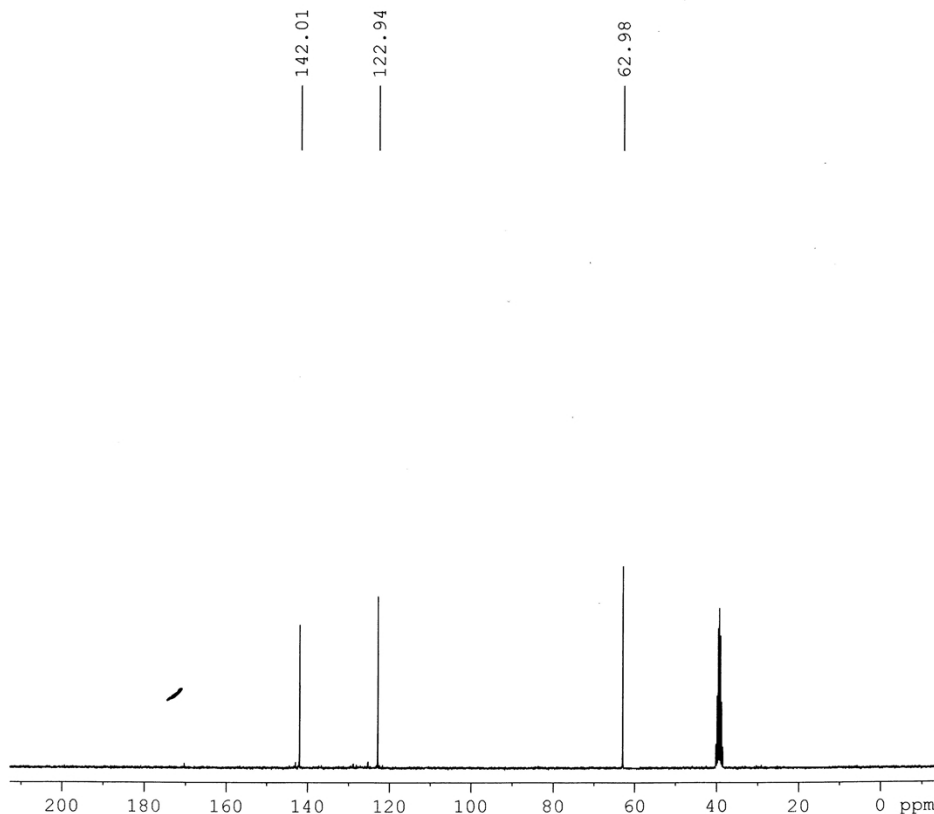
===== CHANNEL f1 =====  
NUC1 1H  
P1 13.15 usec  
PL1 0.00 dB  
SFO1 300.1318534 MHz

F2 - Processing parameters  
SI 32768  
SF 300.1300015 MHz  
WDW EM  
SSB 0  
LB 0.30 Hz  
GB 0  
PC 1.00



$^1\text{H}$  NMR (300 MHz,  $\text{DMSO-}d_6$ ,  $\text{Me}_4\text{Si}$ ) of compound **15**

UNIV. OF MADRAS



Current Data Parameters  
NAME MJY-452  
EXPNO 2  
PROCNO 1

F2 - Acquisition Parameters  
Date\_ 20121130  
Time\_ 14.54  
INSTRUM spect  
PROBHD 5 mm DUL 13C-1  
PULPROG zgpg30  
TD 65536  
SOLVENT DMSO  
NS 197  
DS 4  
SWH 17985.611 Hz  
FIDRES 0.274439 Hz  
AQ 1.8219508 sec  
RG 812.7  
DW 27.800 usec  
DE 6.00 usec  
TE 300.0 K  
D1 2.0000000 sec  
d11 0.0300000 sec  
DELTA 1.89999998 sec  
TDO 1

===== CHANNEL f1 =====  
NUC1 13C  
P1 9.30 usec  
PL1 0.00 dB  
SFO1 75.4752953 MHz

===== CHANNEL f2 =====  
CPDPRG2 waltz16  
NUC2 1H  
PCPD2 80.00 usec  
PL2 0.00 dB  
PL12 15.68 dB  
PL13 16.00 dB  
SFO2 300.1312005 MHz

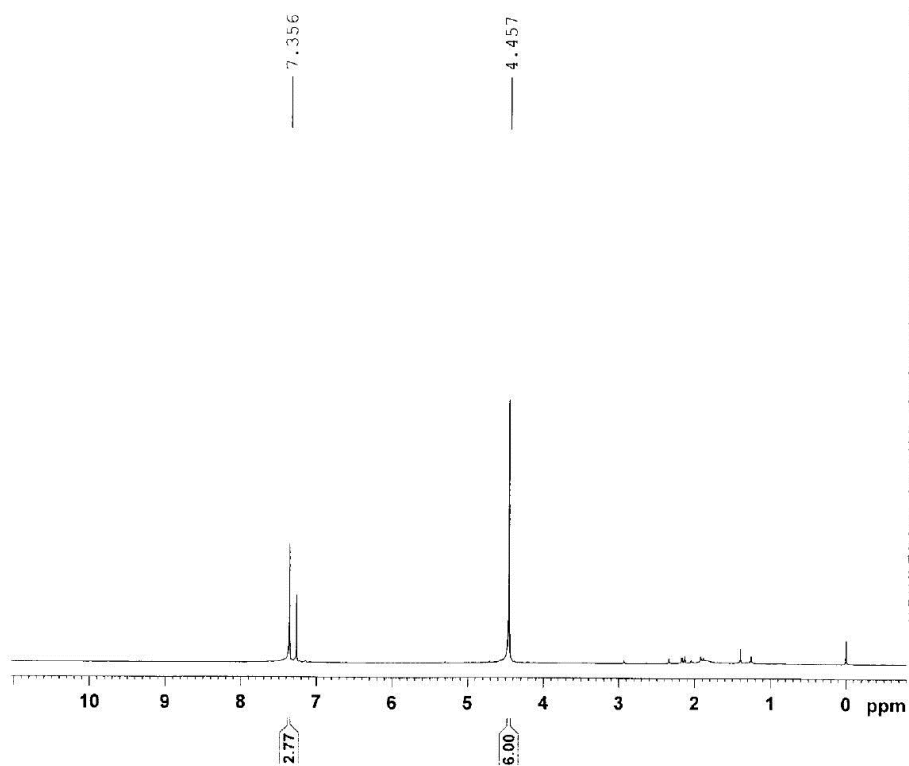
F2 - Processing parameters  
SI 32768  
SF 75.4677867 MHz  
WDW EM  
SSB 0  
LB 1.00 Hz  
GB 0  
PC 1.40

$^{13}\text{C}$  NMR (75 MHz,  $\text{DMSO-}d_6$ ,  $\text{Me}_4\text{Si}$ ) of compound **15**



$^1\text{H}$  NMR (300 MHz,  $\text{CDCl}_3$ ,  $\text{Me}_4\text{Si}$ ) of compound 16

UNIV. OF MADRAS

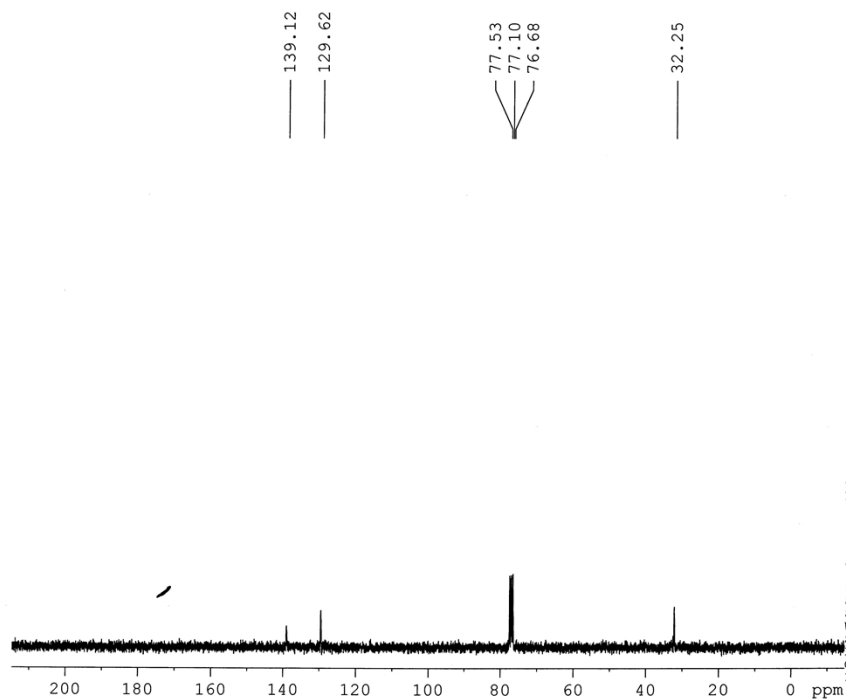


Current Data Parameters  
NAME MJY-466-01  
EXPNO 1  
PROCNO 1

F2 - Acquisition Parameters  
Date\_ 20121226  
Time 12.48  
INSTRUM spect  
PROBHD 5 mm DUL 15C-1  
PULPROG zg30  
TD 65536  
SOLVENT  $\text{CDCl}_3$   
NS 10  
DS 2  
SWH 6172.839 Hz  
FIDRES 0.094190 Hz  
AQ 5.3084660 sec  
RG 256  
DW 81.000 usec  
DE 6.00 usec  
TE 300.0 K  
D1 1.00000000 sec  
TDO 1

----- CHANNEL f1 -----  
NUC1  $^1\text{H}$   
P1 13.15 usec  
PL1 0.00 dB  
SFO1 300.1318534 MHz

F2 - Processing parameters  
SI 32768  
SF 300.130058 MHz  
WDW EM  
SSB 0  
LB 0.30 Hz  
GB 0  
PC 1.00



Current Data Parameters  
NAME MJY-466-01  
EXPNO 2  
PROCNO 1

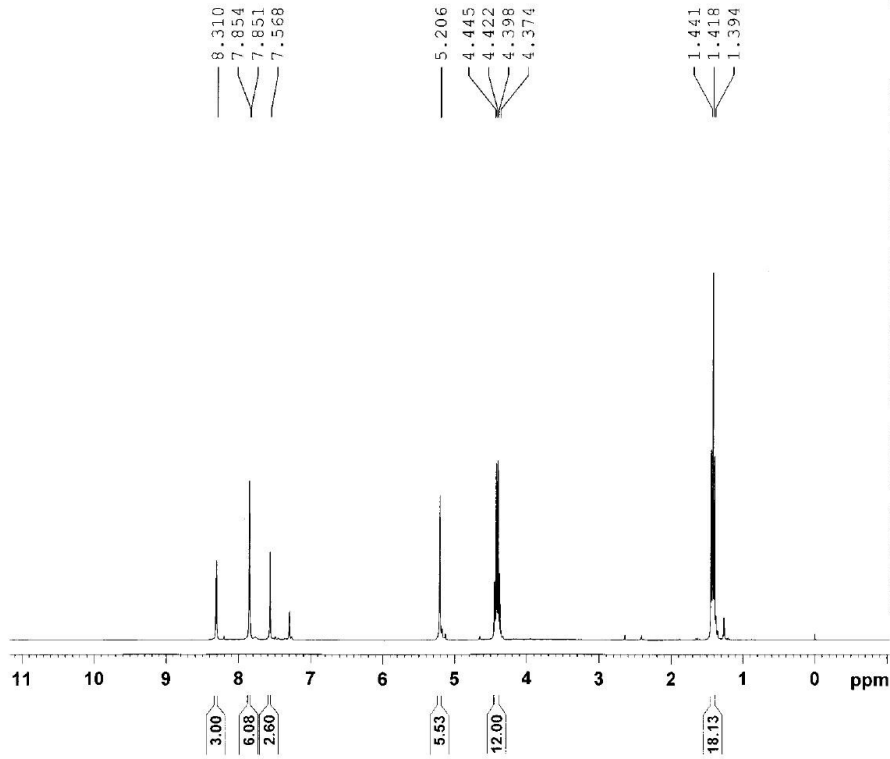
F2 - Acquisition Parameters  
Date 20121226  
Time 12.54  
INSTRUM spect  
PROBHD 5 mm DUL 13C-1  
PULPROG zgpg30  
TD 65536  
SOLVENT CDCl3  
NS 71  
DS 4  
SWH 17995.611 Hz  
FIDRES 0.274439 Hz  
AQ 1.8219508 sec  
RG 812.7  
DW 27.800 usec  
DE 6.00 usec  
TE 300.0 K  
D1 2.0000000 sec  
d11 0.0300000 sec  
DELTA 1.89999998 sec  
TDO 1

===== CHANNEL f1 =====  
NUC1 13C  
P1 9.30 usec  
PL1 0.00 dB  
SFO1 75.4752953 MHz

===== CHANNEL f2 =====  
CPDPRG2 waltz16  
NUC2 1H  
PCPD2 80.00 usec  
PL2 0.00 dB  
PL12 15.68 dB  
PL13 16.00 dB  
SFO2 300.1312005 MHz

F2 - Processing parameters  
SI 32768  
SF 75.4677490 MHz  
WDW EM  
SSB 0  
LB 1.00 Hz  
GB 0  
PC 1.40

$^{13}\text{C}$  NMR (75 MHz,  $\text{CDCl}_3$ ,  $\text{Me}_4\text{Si}$ ) of compound 16



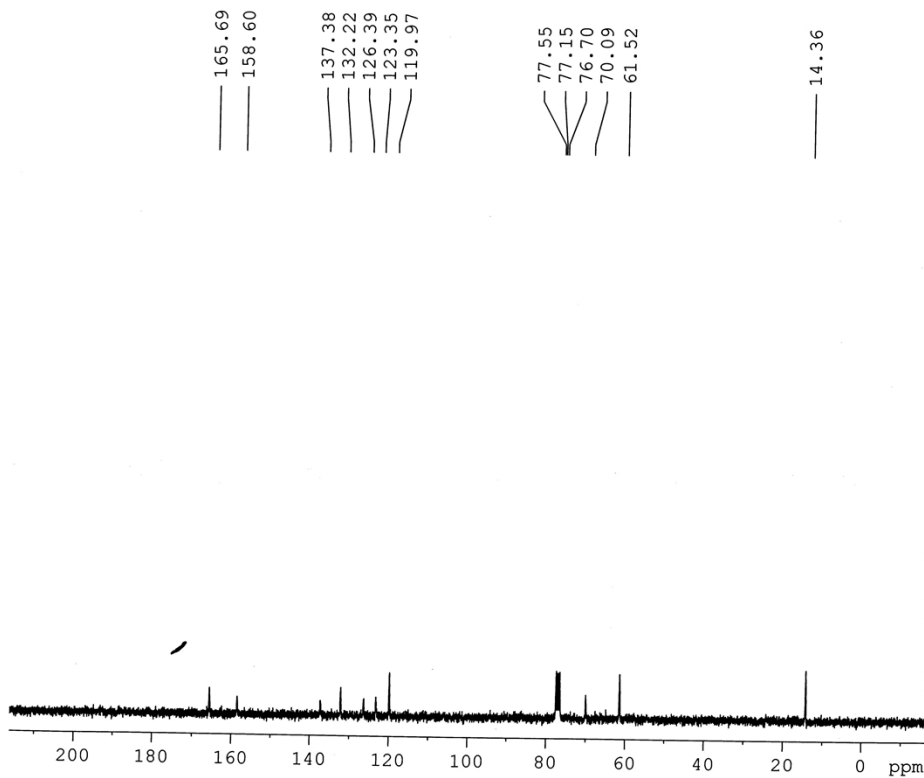
Current Data Parameters  
NAME MJY-B3CHIPE3  
EXPNO 1  
PROCNO 1

F2 - Acquisition Parameters  
Date\_ 20130602  
Time 21.27  
INSTRUM spect  
PROBHD 5 mm DUL 15C-1  
PULPROG zg30  
TD 65536  
SOLVENT CDCl3  
NS 10  
DS 2  
SWH 6172.839 Hz  
FIDRES 0.094190 Hz  
AQ 5.3084660 sec  
RG 32  
DW 81.000 usec  
DE 6.00 usec  
TE 300.0 K  
D1 1.00000000 sec  
TDC 1

===== CHANNEL f1 =====  
NUC1 1H  
P1 13.15 usec  
PL1 0.00 dB  
SFO1 300.1318534 MHz

F2 - Processing parameters  
SI 32768  
SF 300.1299961 MHz  
WDW EM  
SSB 0  
LB 0.30 Hz  
GB 0  
PC 1.00

$^1\text{H}$  NMR (300 MHz,  $\text{CDCl}_3$ ,  $\text{Me}_4\text{Si}$ ) of compound 17



Current Data Parameters  
NAME MJY-B3CHIPE3  
EXPNO 2  
PROCNO 1

F2 - Acquisition Parameters  
Date\_ 20130602  
Time 21.33  
INSTRUM spect  
PROBHD 5 mm DUL 13C-1  
PULPROG zgpg30  
TD 65536  
SOLVENT CDCl3  
NS 68  
DS 4  
SWH 17985.611 Hz  
FIDRES 0.274439 Hz  
AQ 1.8219508 sec  
RG 512  
DW 27.800 usec  
DE 6.00 usec  
TE 300.0 K  
D1 2.00000000 sec  
d11 0.03000000 sec  
DELTA 1.89999998 sec  
TDO 1

===== CHANNEL f1 =====  
NUC1 13C  
P1 9.30 usec  
PL1 0.00 dB  
SFO1 75.4752953 MHz

===== CHANNEL f2 =====  
CPDPRG2 waltz16  
NUC2 1H  
PCPD2 80.00 usec  
PL2 0.00 dB  
PL12 15.68 dB  
PL13 16.00 dB  
SFO2 300.1312005 MHz

F2 - Processing parameters  
SI 32768  
SF 75.4677490 MHz  
WDW EM  
SSB 0  
LB 1.00 Hz  
GB 0  
PC 1.40

<sup>13</sup>C NMR (75 MHz, CDCl<sub>3</sub>, Me<sub>4</sub>Si) of compound 17

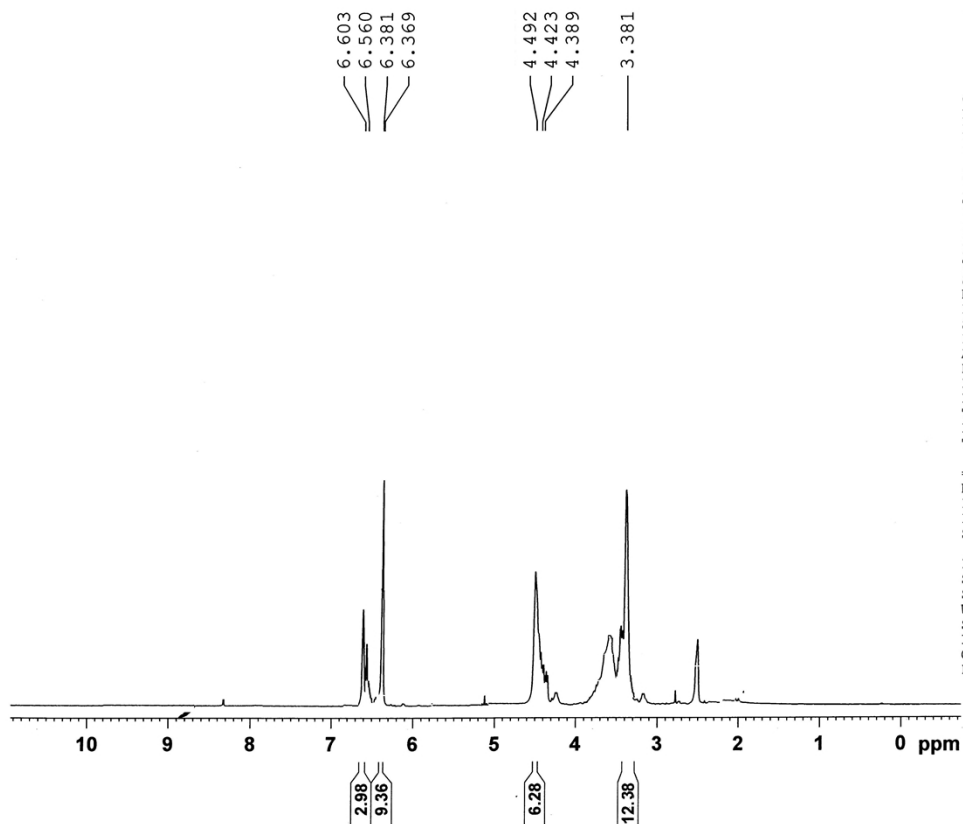


Current Data Parameters  
NAME MJY-105A  
EXPNO 1  
PROCNO 1

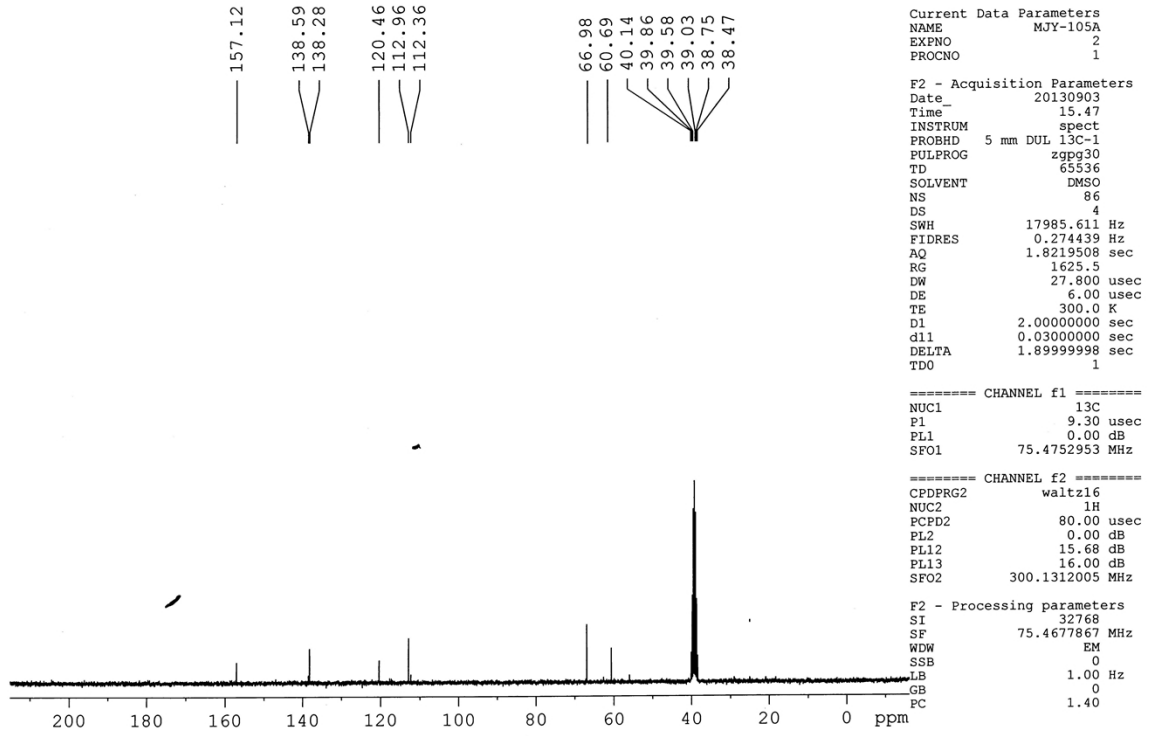
F2 - Acquisition Parameters  
Date\_ 20130903  
Time 15.40  
INSTRUM spect  
PROBHD 5 mm DUL 13C-1  
PULPROG zg30  
TD 65536  
SOLVENT DMSO  
NS 16  
DS 2  
SWH 6172.839 Hz  
FIDRES 0.094190 Hz  
AQ 5.3084660 sec  
RG 35.9  
DW 81.000 usec  
DE 6.00 usec  
TE 300.0 K  
D1 1.00000000 sec  
TDO 1

===== CHANNEL f1 =====  
NUC1 1H  
P1 13.15 usec  
PL1 0.00 dB  
SFO1 300.1318534 MHz

F2 - Processing parameters  
SI 32768  
SF 300.1300000 MHz  
WDW EM  
SSB 0  
LB 0.30 Hz  
GB 0  
PC 1.00

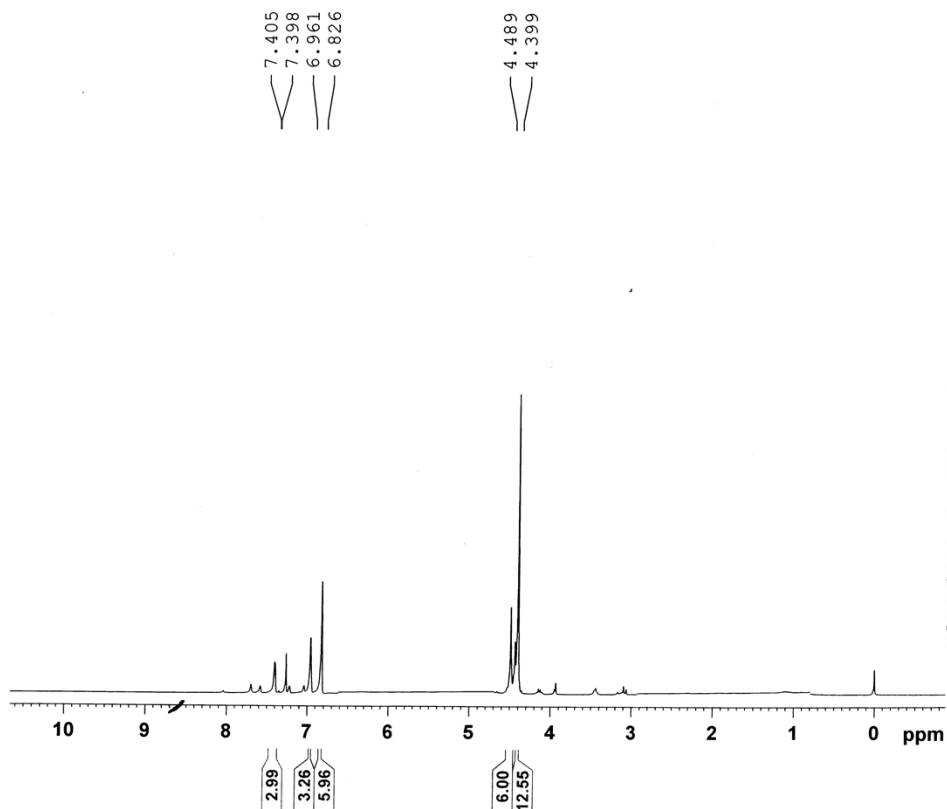


$^1\text{H}$  NMR (300 MHz,  $\text{DMSO-}d_6$ ,  $\text{Me}_4\text{Si}$ ) of compound **18**



$^{13}\text{C}$  NMR (75 MHz,  $\text{DMSO-}d_6$ ,  $\text{Me}_4\text{Si}$ ) of compound **18**

UNIV OF MADRAS



Current Data Parameters  
NAME MJY-BCH11B  
EXPNO 1  
PROCNO 1

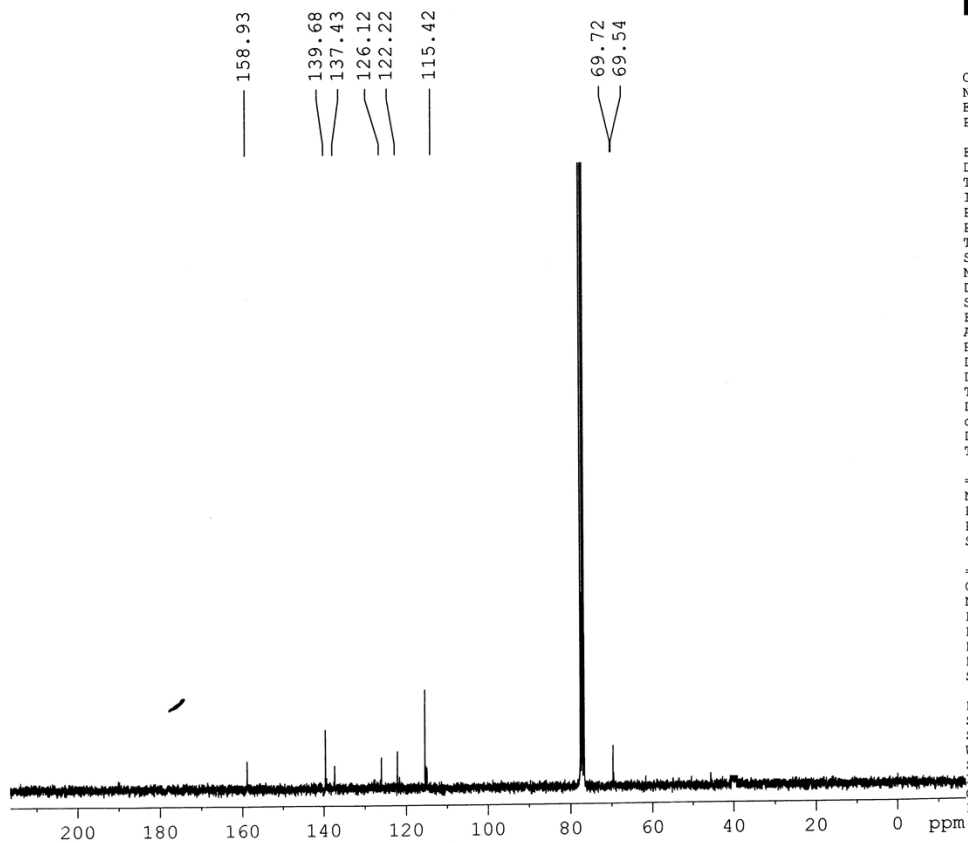
F2 - Acquisition Parameters  
Date\_ 20130915  
Time\_ 15.07  
INSTRUM spect  
PROBHD 5 mm DUL 13C-1  
PULPROG zg30  
TD 65536  
SOLVENT CDCl3  
NS 16  
DS 2  
SWH 6172.839 Hz  
FIDRES 0.094190 Hz  
AQ 5.3084660 sec  
RG 101.6  
DW 81.000 usec  
DE 6.00 usec  
TE 300.0 K  
D1 1.0000000 sec  
TDO 1

===== CHANNEL f1 =====  
NUC1 1H  
P1 13.15 usec  
PL1 0.00 dB  
SF01 300.1318534 MHz

F2 - Processing parameters  
SI 32768  
SF 300.1300057 MHz  
WDW EM  
SSB 0  
LB 0.30 Hz  
GB 0  
PC 1.00

$^1\text{H}$  NMR (300 MHz,  $\text{CDCl}_3$ ,  $\text{Me}_4\text{Si}$ ) of compound **19**

UNIV OF MADRAS



Current Data Parameters  
NAME MJY-BCH11B  
EXPNO 2  
PROCNO 1

F2 - Acquisition Parameters  
Date\_ 20130525  
Time\_ 13.42  
INSTRUM spect  
PROBHD 5 mm DUL 13C-1  
PULPROG zgpg30  
TD 65536  
SOLVENT CDCl3  
NS 1024  
DS 4  
SWH 17985.611 Hz  
FIDRES 0.274439 Hz  
AQ 1.8219508 sec  
RG 1824.6  
DW 27.800 usec  
DE 6.00 usec  
TE 300.0 K  
D1 2.0000000 sec  
d11 0.0300000 sec  
DELTA 1.89999998 sec  
TD0 1

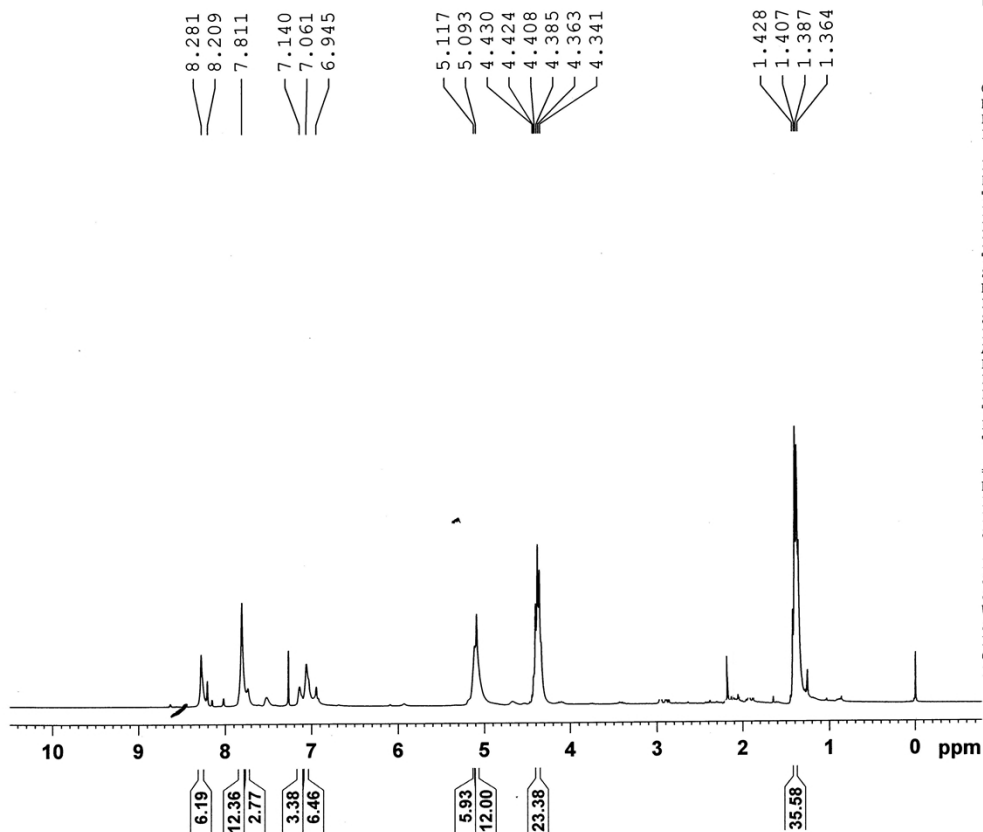
===== CHANNEL f1 =====  
NUC1 13C  
P1 9.30 usec  
PL1 0.00 dB  
SFO1 75.4752953 MHz

===== CHANNEL f2 =====  
CPDPRG2 waltz16  
NUC2 1H  
PCPD2 80.00 usec  
PL2 0.00 dB  
PL12 15.68 dB  
PL13 16.00 dB  
SFO2 300.1312005 MHz

F2 - Processing parameters  
SI 32768  
SF 75.4677490 MHz  
WDW EM  
SSB 0  
LB 1.00 Hz  
GB 0  
PC 1.40

<sup>13</sup>C NMR (75 MHz, CDCl<sub>3</sub>, Me<sub>4</sub>Si) of compound 19





Current Data Parameters  
NAME MJY-106  
EXPNO 1  
PROCNO 1

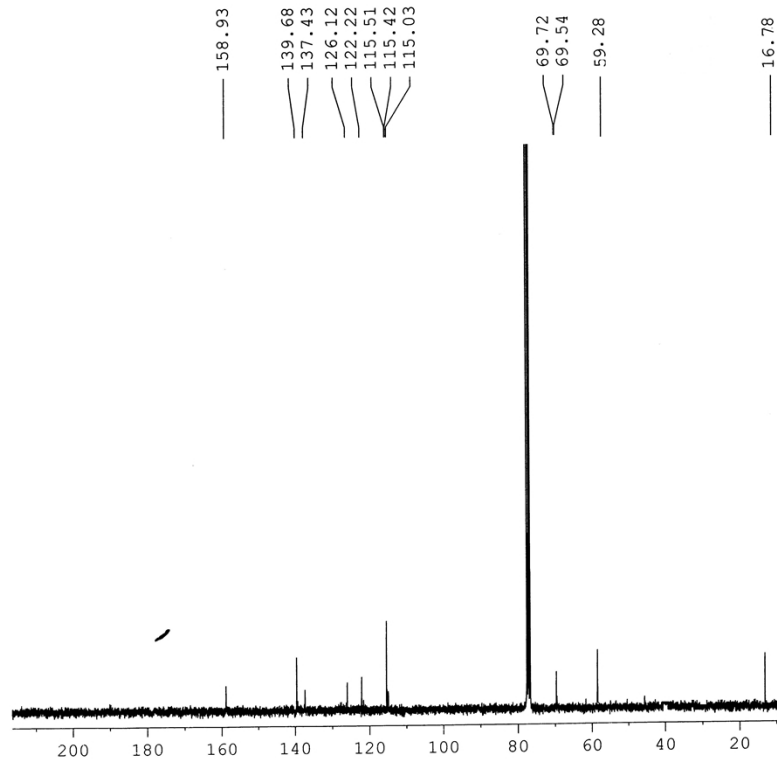
F2 - Acquisition Parameters  
Date\_ 20130905  
Time 15.54  
INSTRUM spect  
PROBHD 5 mm DUL 13C-1  
PULPROG zg30  
TD 65536  
SOLVENT CDCl3  
NS 16  
DS 2  
SWH 6172.839 Hz  
FIDRES 0.094190 Hz  
AQ 5.3084660 sec  
RG 90.5  
DW 81.000 usec  
DE 6.00 usec  
TE 300.0 K  
D1 1.0000000 sec  
TD0 1

===== CHANNEL f1 =====  
NUC1 1H  
P1 13.15 usec  
PL1 0.00 dB  
SF01 300.1318534 MHz

F2 - Processing parameters  
SI 32768  
SF 300.1300038 MHz  
WDW EM  
SSB 0  
LB 0.30 Hz  
GB 0  
PC 1.00

$^1\text{H}$  NMR (300 MHz,  $\text{CDCl}_3$ ,  $\text{Me}_4\text{Si}$ ) of compound **20**

UNIV OF MADRAS



Current Data Parameters  
NAME MJY-BCH11B  
EXPNO 2  
PROCNO 1

F2 - Acquisition Parameters  
Date\_ 20130525  
Time\_ 13.42  
INSTRUM spect  
PROBHD 5 mm DUL 13C-1  
PULPROG zgpg30  
TD 65536  
SOLVENT CDC13  
NS 1024  
DS 4  
SWH 17985.611 Hz  
FIDRES 0.274439 Hz  
AQ 1.8219508 sec  
RG 1824.6  
DW 27.800 usec  
DE 6.00 usec  
TE 300.0 K  
D1 2.0000000 sec  
d11 0.0300000 sec  
DELTA 1.89999998 sec  
TDO 1

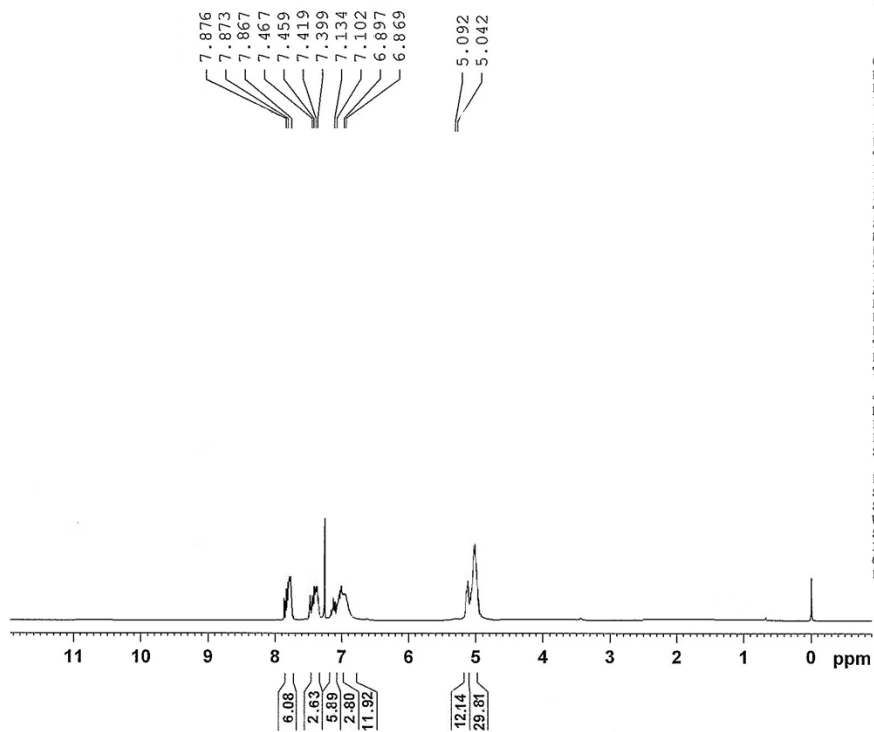
==== CHANNEL f1 =====  
NUC1 13C  
P1 9.30 usec  
PL1 0.00 dB  
SFO1 75.4752953 MHz

==== CHANNEL f2 =====  
CPDPRG2 waltz16  
NUC2 1H  
PCPD2 80.00 usec  
PL2 0.00 dB  
PL12 15.68 dB  
PL13 16.00 dB  
SFO2 300.1312005 MHz

F2 - Processing parameters  
SI 32768  
SF 75.4677490 MHz  
WDW EM  
SSB 0  
LB 1.00 Hz  
GB 0  
PC 1.40

$^{13}\text{C}$  NMR (75 MHz,  $\text{DMSO-}d_6$ ,  $\text{Me}_4\text{Si}$ ) of compound **20**

UNIV OF MADRAS



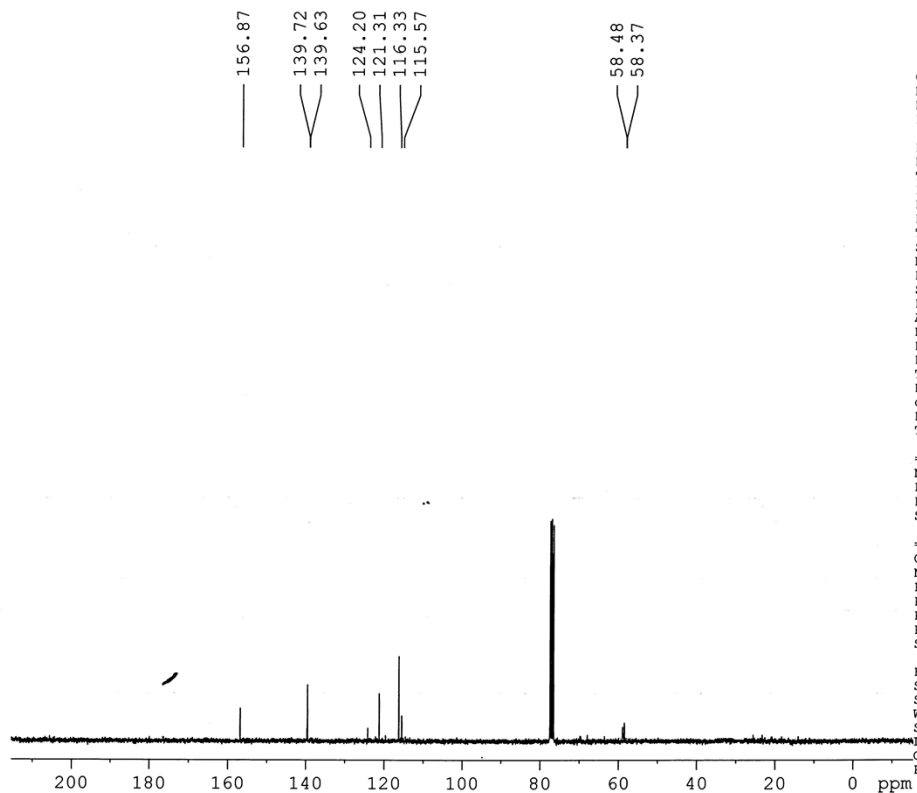
```
Current Data Parameters
NAME      MJY-S-28
EXPNO    1
PROCNO   1

F2 - Acquisition Parameters
Date_    20131106
Time     16.23
INSTRUM  spect
PROBHD   5 mm DUL 13C-1
PULPROG  zg30
TD       65536
SOLVENT  CDCl3
NS       16
DS       2
SWH      6172.839 Hz
FIDRES   0.094190 Hz
AQ       5.3084660 sec
RG       143.7
DW       81.000 usec
DE       6.00 usec
TE       300.0 K
D1       1.00000000 sec
TDO      1

===== CHANNEL f1 =====
NUC1     1H
P1       13.15 usec
FL1      0.00 dB
SFO1     300.1318534 MHz

F2 - Processing parameters
SI       32768
SF       300.1300066 MHz
WDW      EM
SSB      0
LB       0.30 Hz
GB       0
PC       1.00
```

$^1\text{H}$  NMR (300 MHz,  $\text{CDCl}_3$ ,  $\text{Me}_4\text{Si}$ ) of compound **22**



Current Data Parameters  
NAME MJY-BCH2B  
EXPNO 2  
PROCNO 1

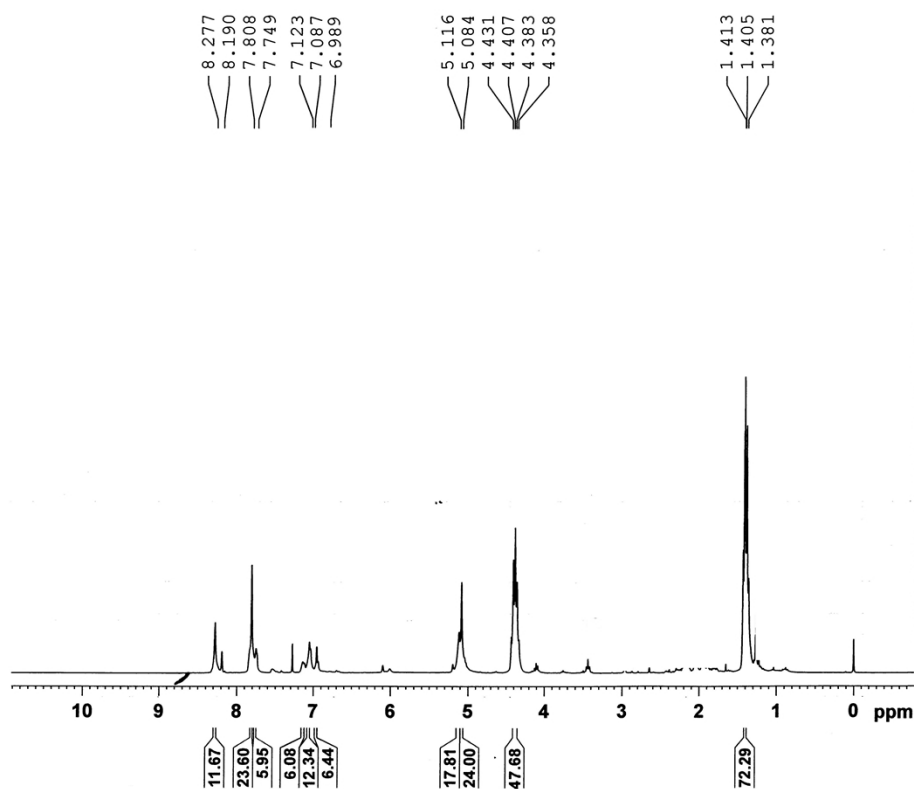
F2 - Acquisition Parameters  
Date\_ 20130919  
Time\_ 15.48  
INSTRUM spect  
PROBHD 5 mm DUL 13C-1  
PULPROG zgpg30  
TD 65536  
SOLVENT CDCl3  
NS 239  
DS 4  
SWH 17985.611 Hz  
FIDRES 0.274439 Hz  
AQ 1.8219508 sec  
RG 574.7  
DW 27.800 usec  
DE 6.00 usec  
TE 300.0 K  
D1 2.0000000 sec  
d11 0.0300000 sec  
DELTA 1.89999998 sec  
TDO 1

===== CHANNEL f1 =====  
NUC1 13C  
P1 9.30 usec  
PL1 0.00 dB  
SFO1 75.4752953 MHz

===== CHANNEL f2 =====  
CPDPRG2 waltz16  
NUC2 1H  
PCPD2 80.00 usec  
PL2 0.00 dB  
PL12 15.68 dB  
PL13 16.00 dB  
SFO2 300.1312005 MHz

F2 - Processing parameters  
SI 32768  
SF 75.4677490 MHz  
WDW EM  
SSB 0  
LB 1.00 Hz  
GB 0  
FC 1.40

$^{13}\text{C}$  NMR (75 MHz,  $\text{CDCl}_3$ ,  $\text{Me}_4\text{Si}$ ) of compound **22**



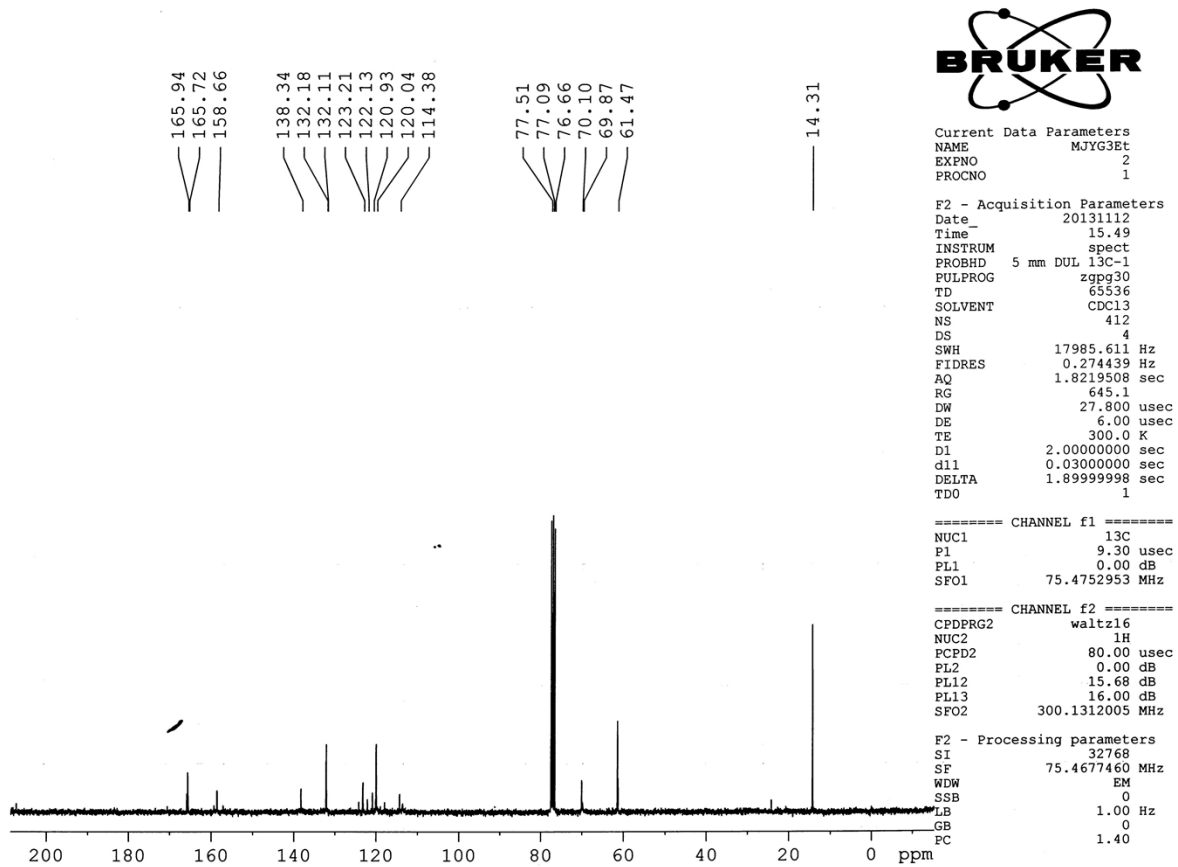
Current Data Parameters  
NAME MJY-BG3Et  
EXPNO 1  
PROCNO 1

F2 - Acquisition Parameters  
Date\_ 20131112  
Time 15.26  
INSTRUM spect  
PROBHD 5 mm DUL 13C-1  
PULPROG zg30  
TD 65536  
SOLVENT CDCl3  
NS 16  
DS 2  
SWH 6172.839 Hz  
FIDRES 0.094190 Hz  
AQ 5.3084660 sec  
RG 57  
DW 81.000 usec  
DE 6.00 usec  
TE 300.0 K  
D1 1.00000000 sec  
TDO 1

===== CHANNEL f1 =====  
NUC1 1H  
P1 13.15 usec  
PL1 0.00 dB  
SFO1 300.1318534 MHz

F2 - Processing parameters  
SI 32768  
SF 300.1300015 MHz  
WDW EM  
SSB 0  
LB 0.30 Hz  
GB 0  
PC 1.00

$^1\text{H}$  NMR (300 MHz,  $\text{CDCl}_3$ ,  $\text{Me}_4\text{Si}$ ) of compound 23



<sup>13</sup>C NMR (75 MHz, CDCl<sub>3</sub>, Me<sub>4</sub>Si) of compound **23**

UNIV OF MADRAS

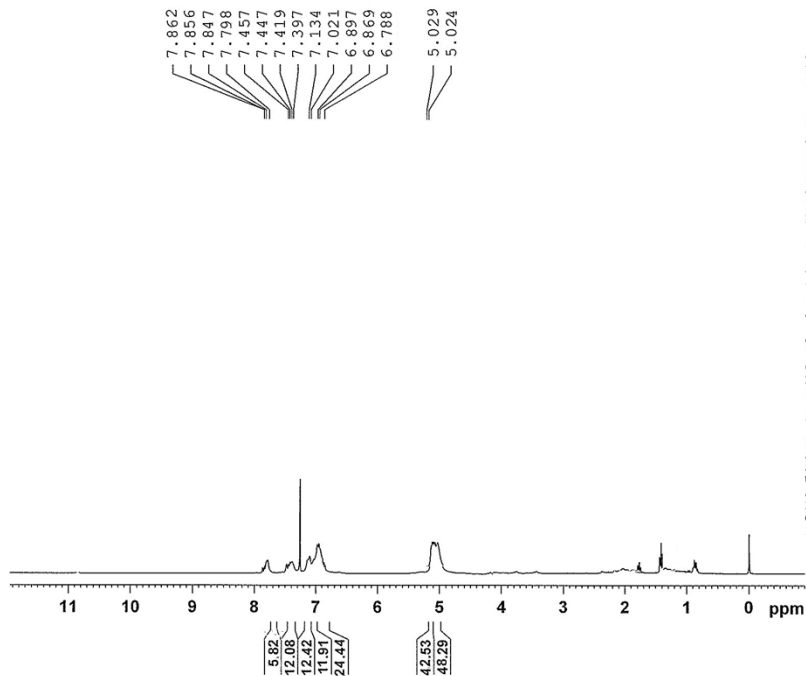


```
Current Data Parameters
NAME      MJY-S-20
EXPNO    1
PROCNO   1

F2 - Acquisition Parameters
Date_    20131103
Time     14.23
INSTRUM  spect
PROBHD   5 mm DUL 13C-1
PULPROG  zg30
TD       65536
SOLVENT  CDCl3
NS       16
DS       2
SWH      6172.839 Hz
FIDRES   0.094190 Hz
AQ       5.3084660 sec
RG       143.7
DW       81.000 usec
DE       6.00 usec
TE       300.0 K
D1       1.00000000 sec
TD0      1

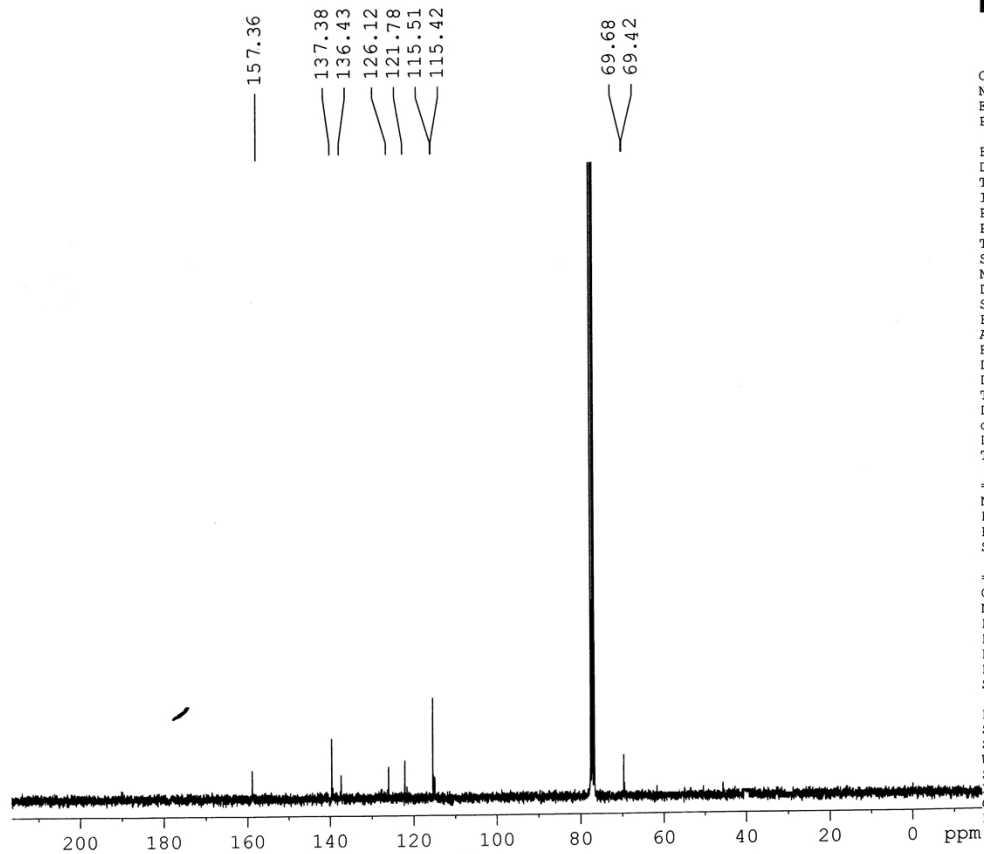
===== CHANNEL f1 =====
NUC1     1H
P1       13.15 usec
PL1      0.00 dB
SFO1     300.1318534 MHz

F2 - Processing parameters
SI       32768
SF       300.1300066 MHz
WDW      EM
SSB      0
LB       0.30 Hz
GB       0
PC       1.00
```



$^1\text{H}$  NMR (300 MHz,  $\text{CDCl}_3$ ,  $\text{Me}_4\text{Si}$ ) of compound **25**

UNIV OF MADRAS



Current Data Parameters  
NAME MJY-BCH13B  
EXPNO 2  
PROCNO 1

F2 - Acquisition Parameters  
Date\_ 20131015  
Time 13.42  
INSTRUM spect  
PROBHD 5 mm DUL 13C-1  
PULPROG zgpg30  
TD 65536  
SOLVENT CDCl3  
NS 1024  
DS 4  
SWH 17985.611 Hz  
FIDRES 0.274439 Hz  
AQ 1.8219508 sec  
RG 1824.6  
DW 27.800 usec  
DE 6.00 usec  
TE 300.0 K  
D1 2.0000000 sec  
d11 0.0300000 sec  
DELTA 1.89999998 sec  
TDO 1

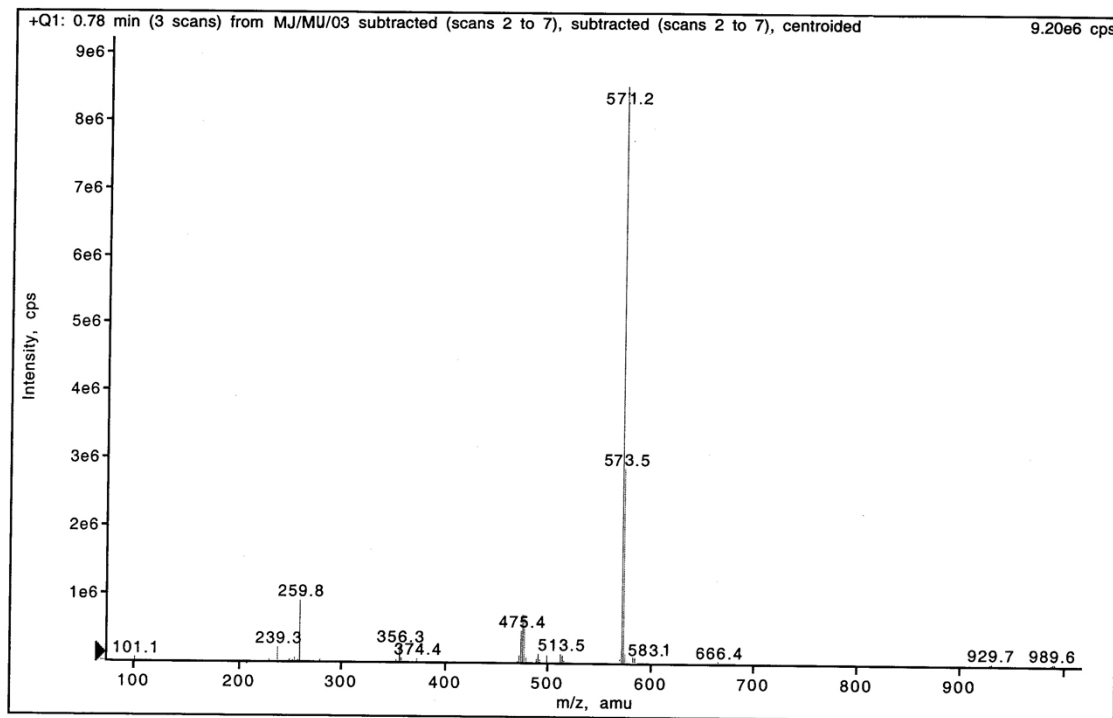
===== CHANNEL f1 =====  
NUC1 13C  
P1 9.30 usec  
PL1 0.00 dB  
SFO1 75.4752953 MHz

===== CHANNEL f2 =====  
CPDPRG2 waltz16  
NUC2 1H  
PCPD2 80.00 usec  
PL2 0.00 dB  
PL12 15.68 dB  
PL13 16.00 dB  
SFO2 300.1312005 MHz

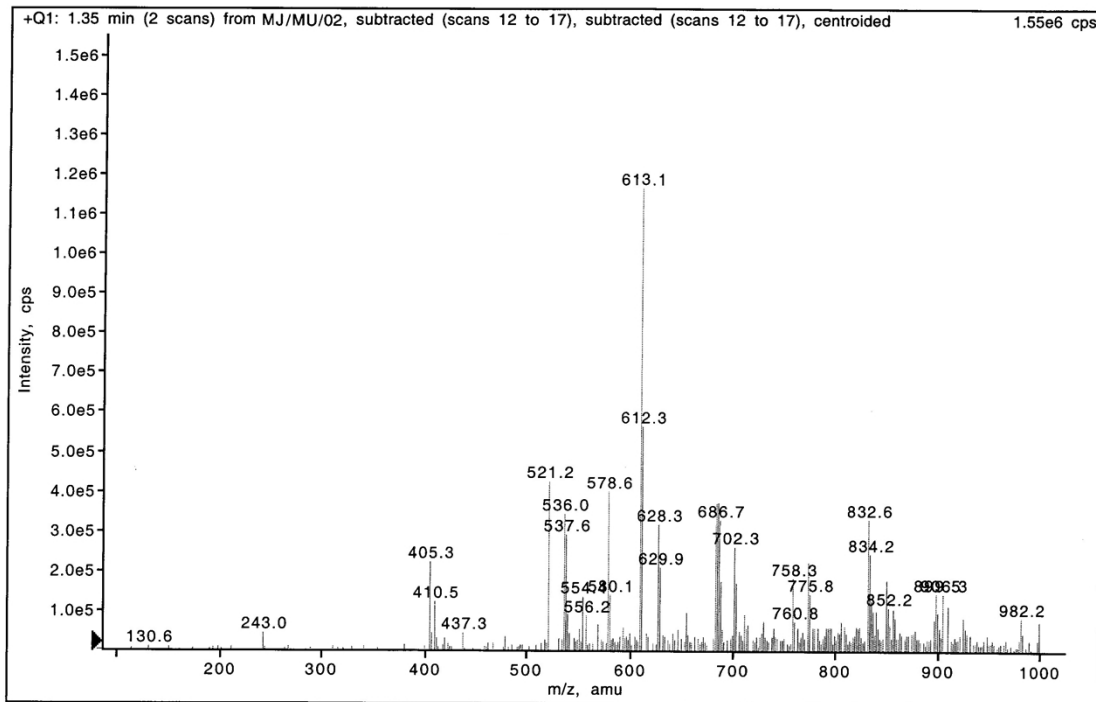
F2 - Processing parameters  
SI 32768  
SF 75.4677490 MHz  
WDW EM  
SSB 0  
LB 1.00 Hz  
GB 0  
PC 1.40

$^{13}\text{C}$  NMR (75 MHz,  $\text{CDCl}_3$ ,  $\text{Me}_4\text{Si}$ ) of compound **25**





High Resolution Mass Spectrum of dendrimer 1

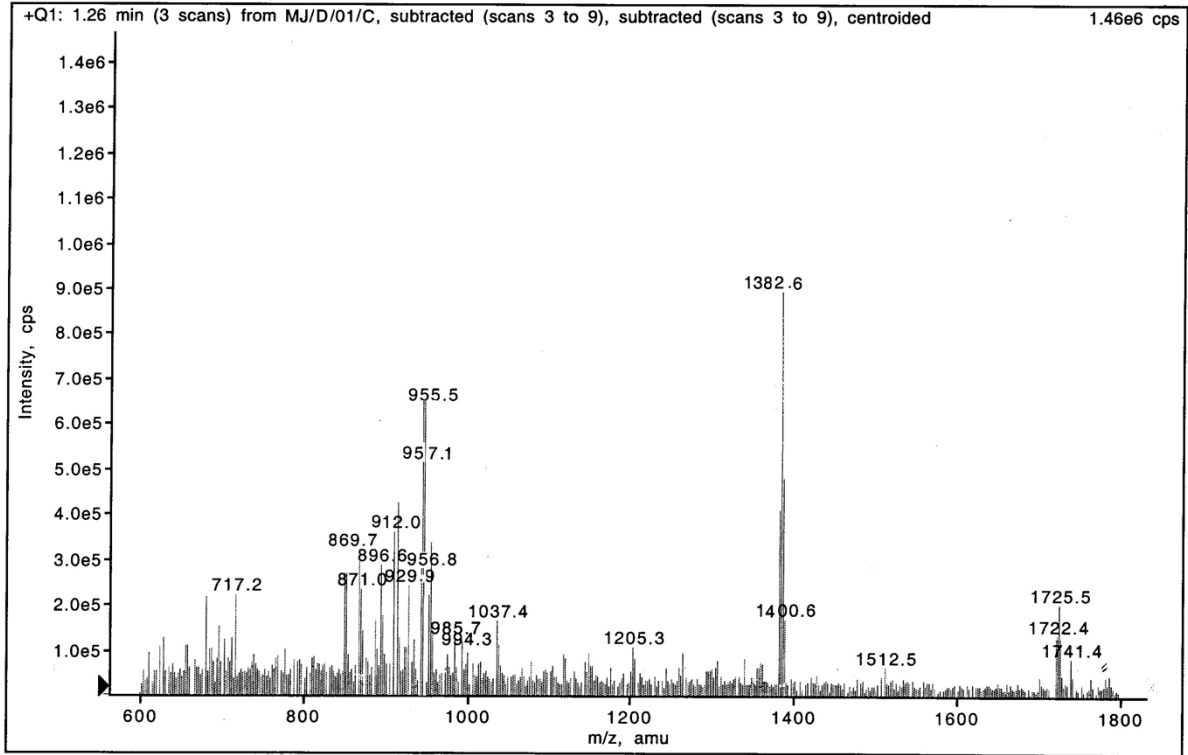


High Resolution Mass Spectrum of dendrimer 2

MJ/D/01/C (No Title)

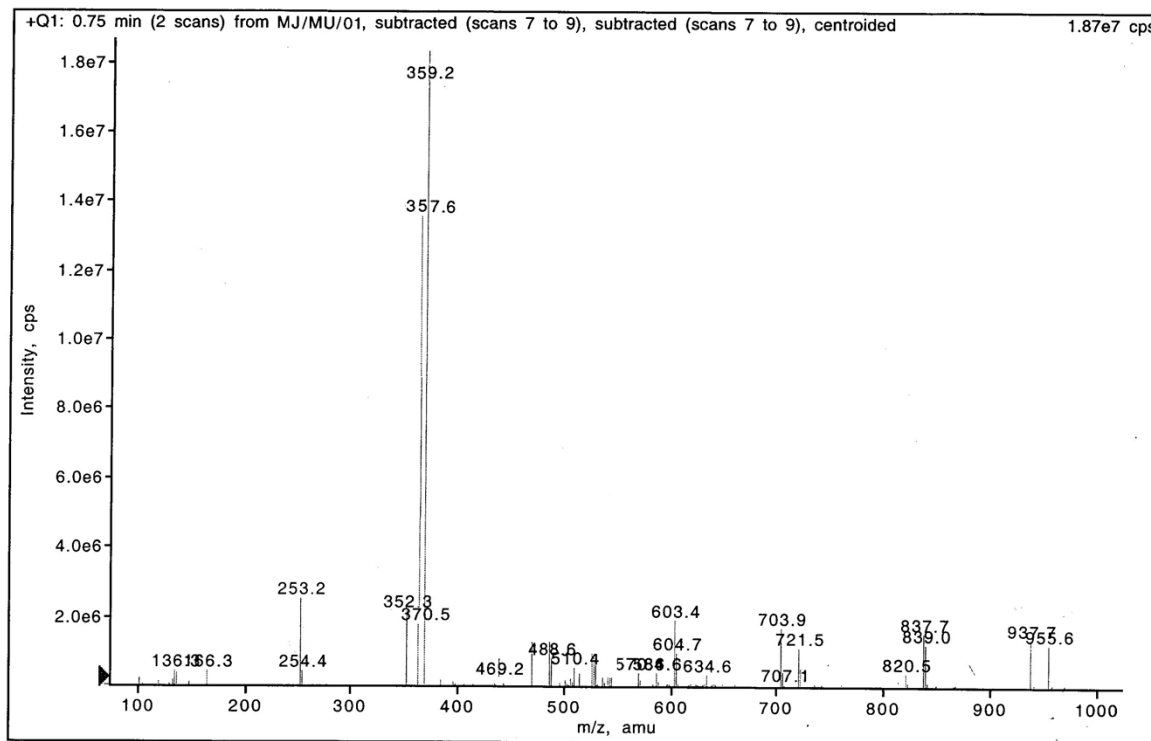
Period 1, Expt. 1; Mass range: 600.0 to 1800.0 by 0.2 amu; Dwell: 0.7 ms; Pause: 2.0 ms

Acq. Time: Sep 30, 2014 at 6:02:47 PM; Exp. Comment: Daily FIA mass analysis



High Resolution Mass Spectrum of dendrimer 4

Period 1, Expt. 1; Mass range: 100.0 to 1000.0 by 0.2 amu; Dwell: 0.8 ms; Pause: 2.0 ms  
Acq. Time: Jul 8, 2014 at 2:36:12 PM



High Resolution Mass Spectrum of compound 16