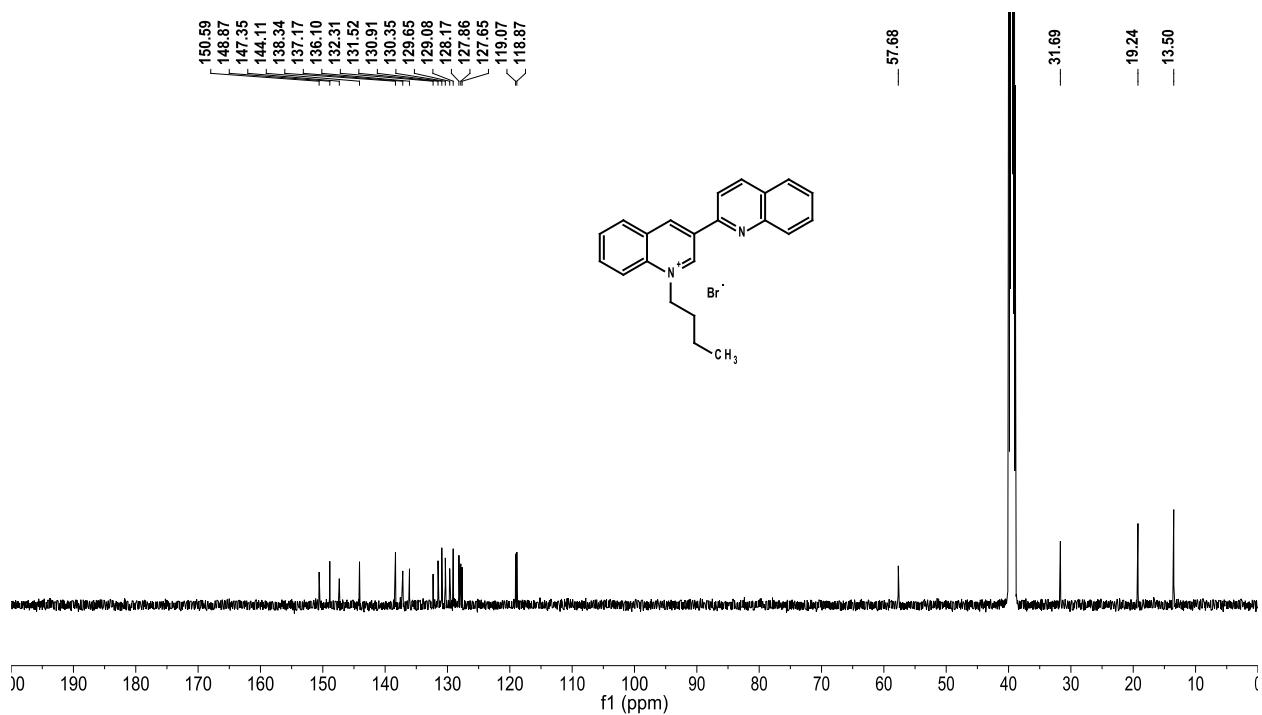
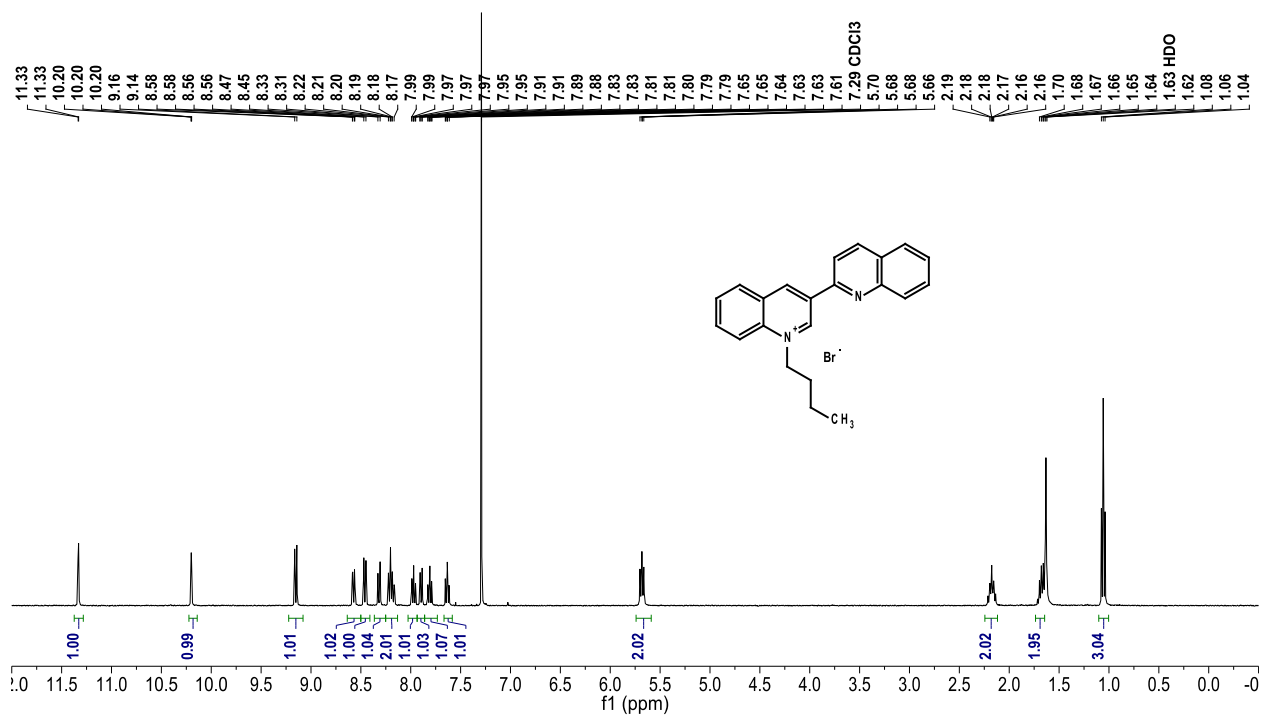
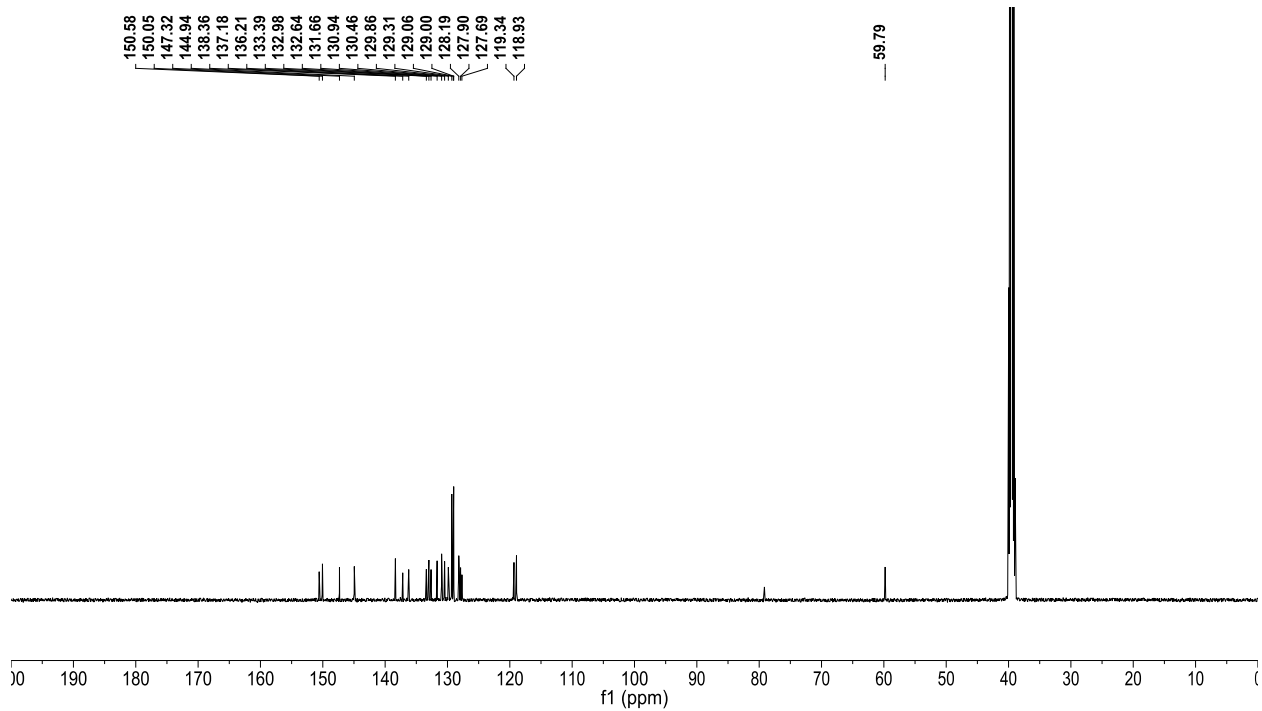
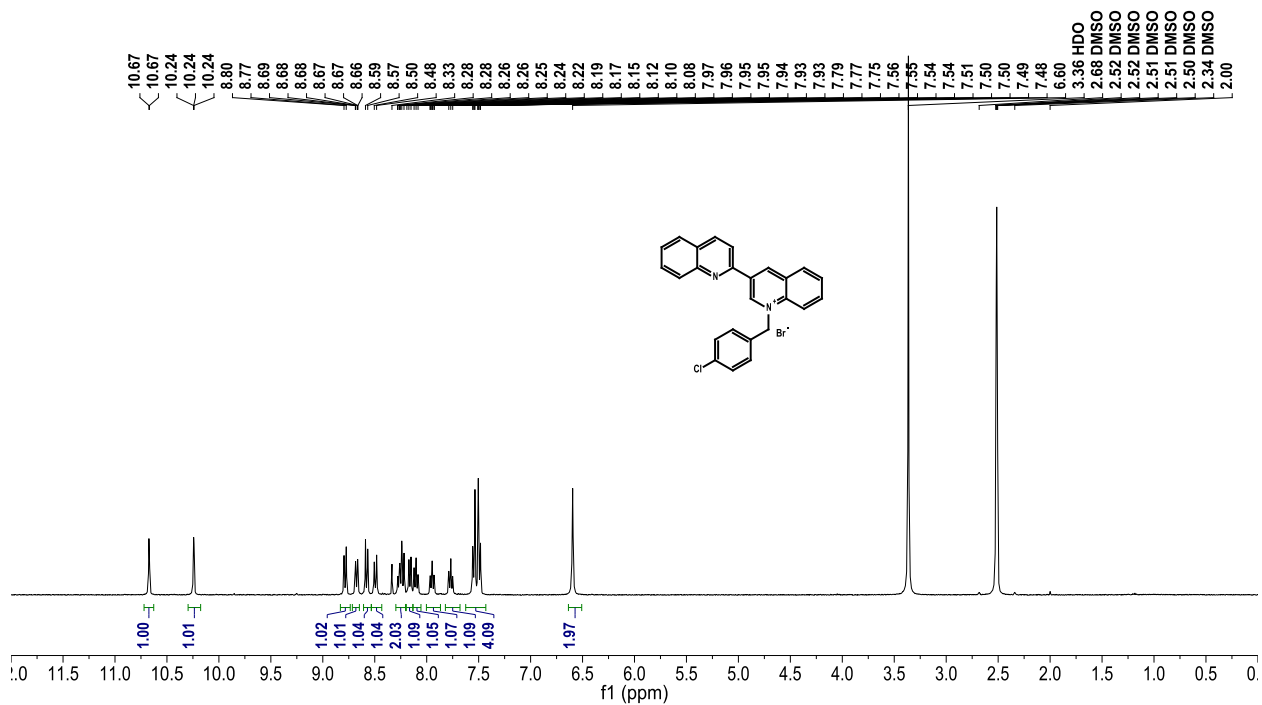


### NMR data for quaternary salts

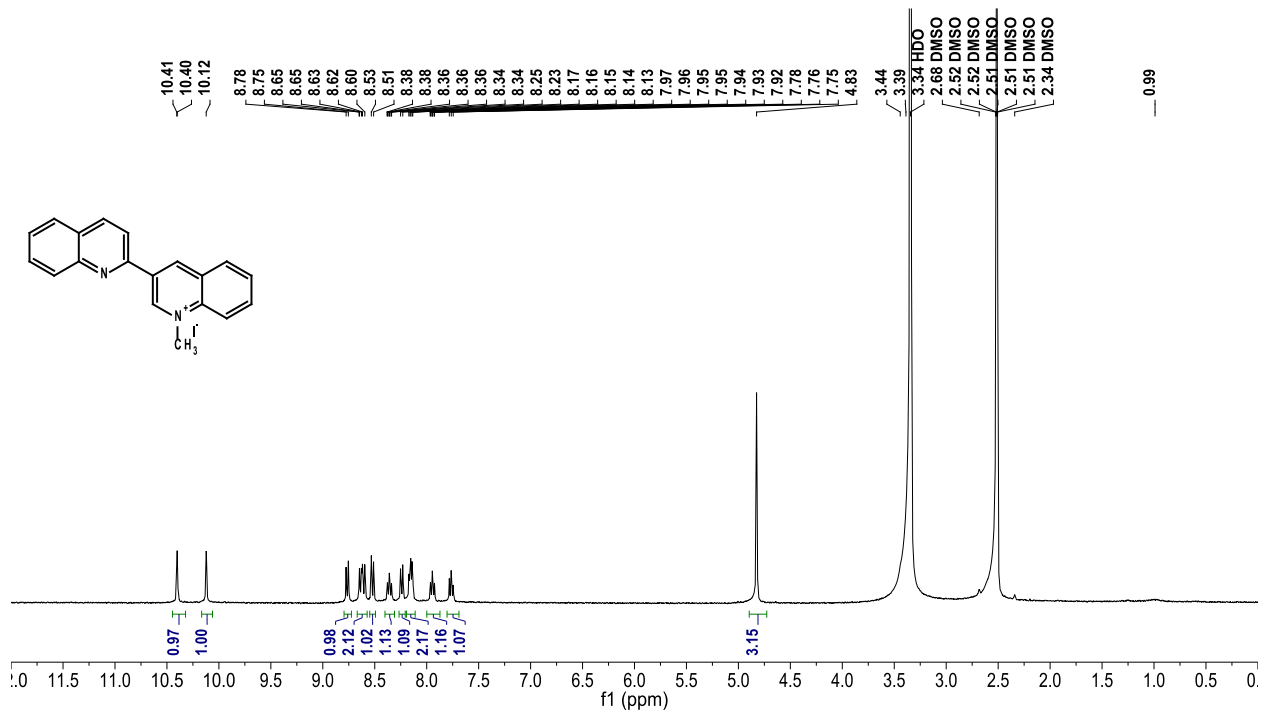
#### 1'-butyl-[2,3'-biquinolin]-1'-ium bromide (2)



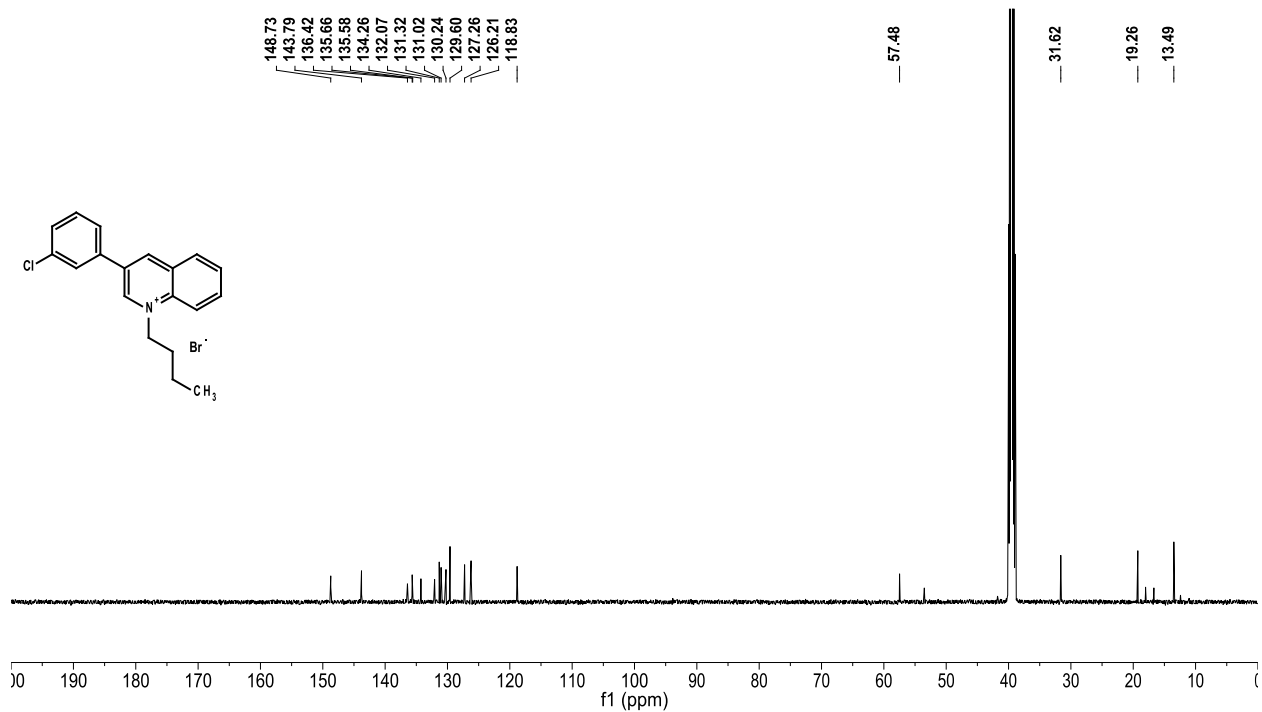
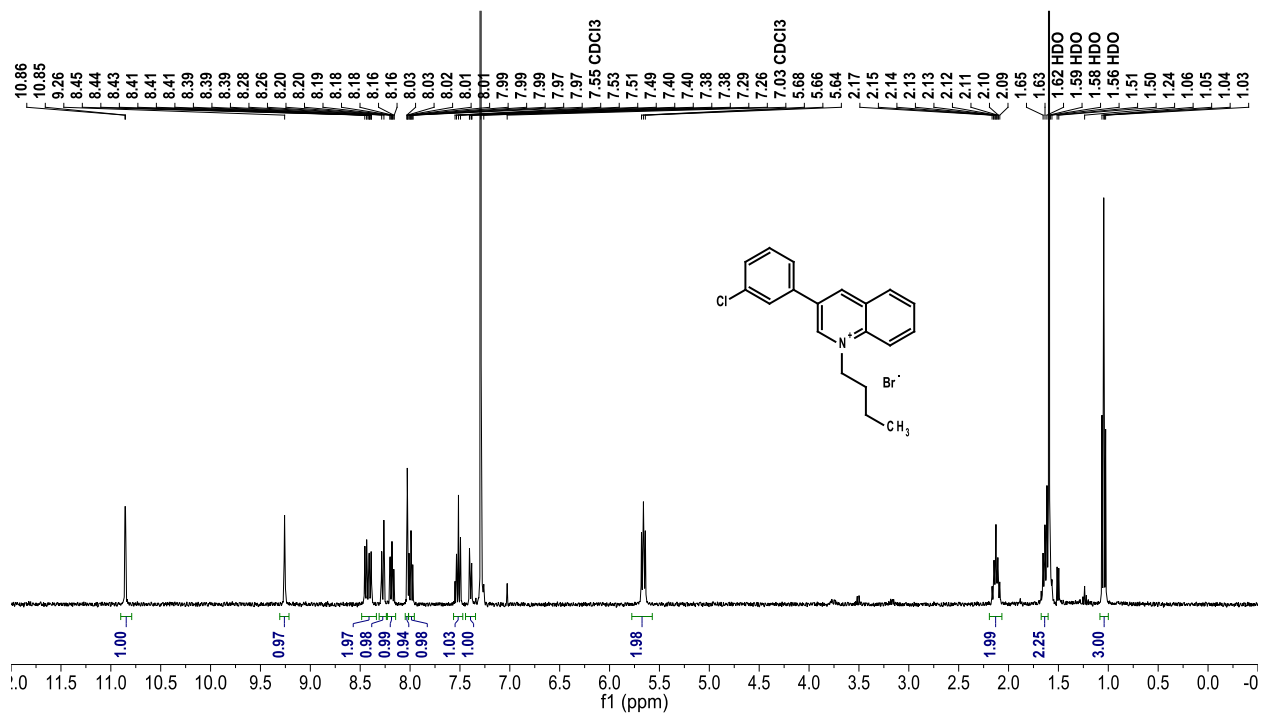
# 1'-(4-chlorobenzyl)-[2,3'-biquinolin]-1'-ium bromide (3)



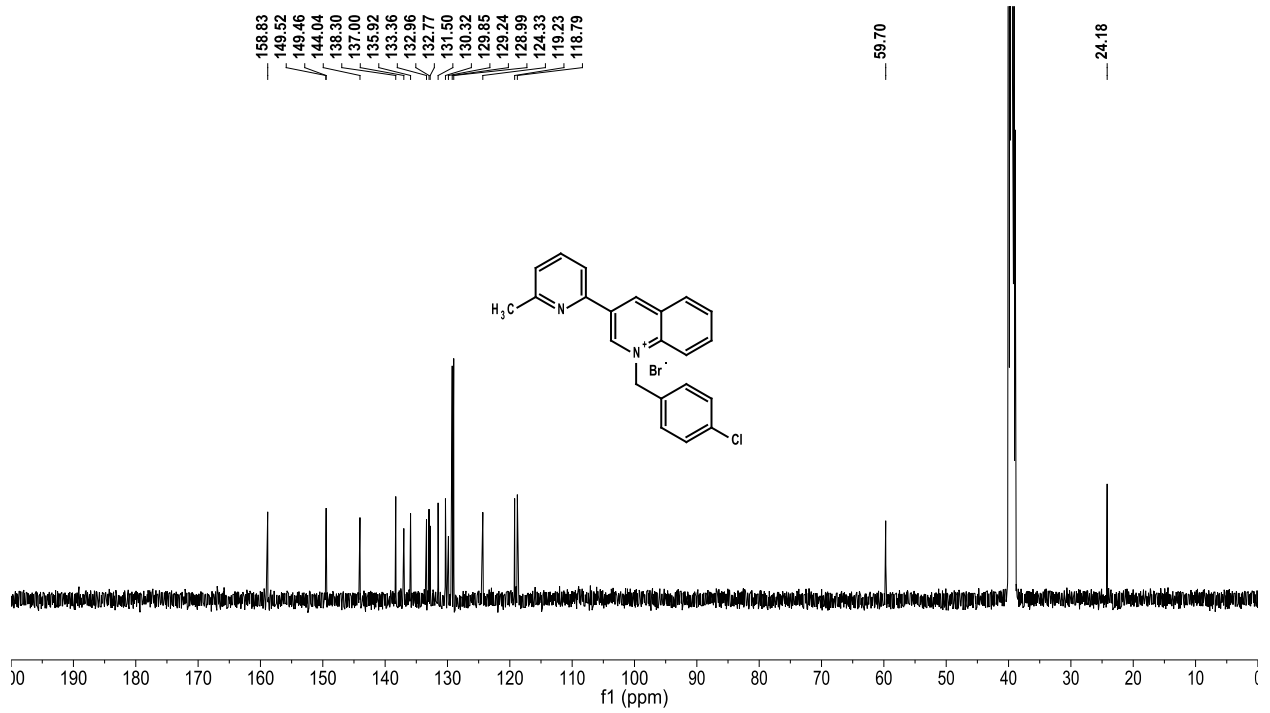
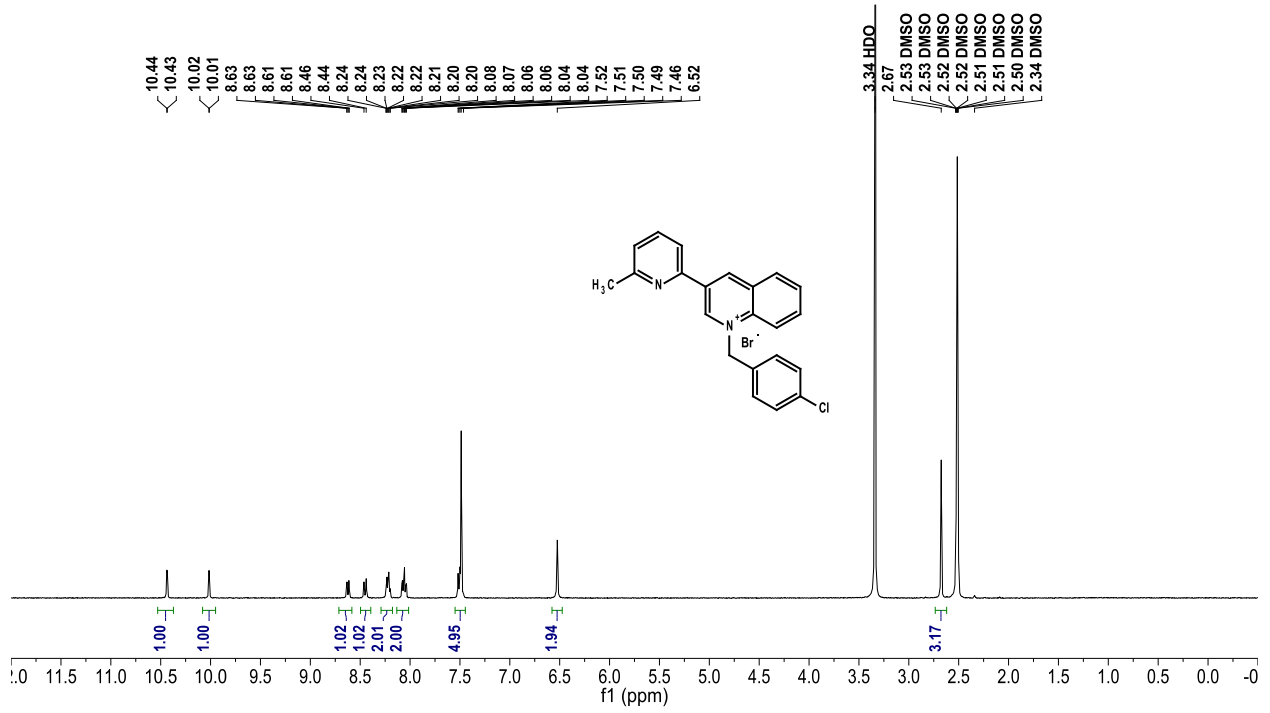
# 1'-methyl-[2,3'-biquinolin]-1'-ium iodide (4)



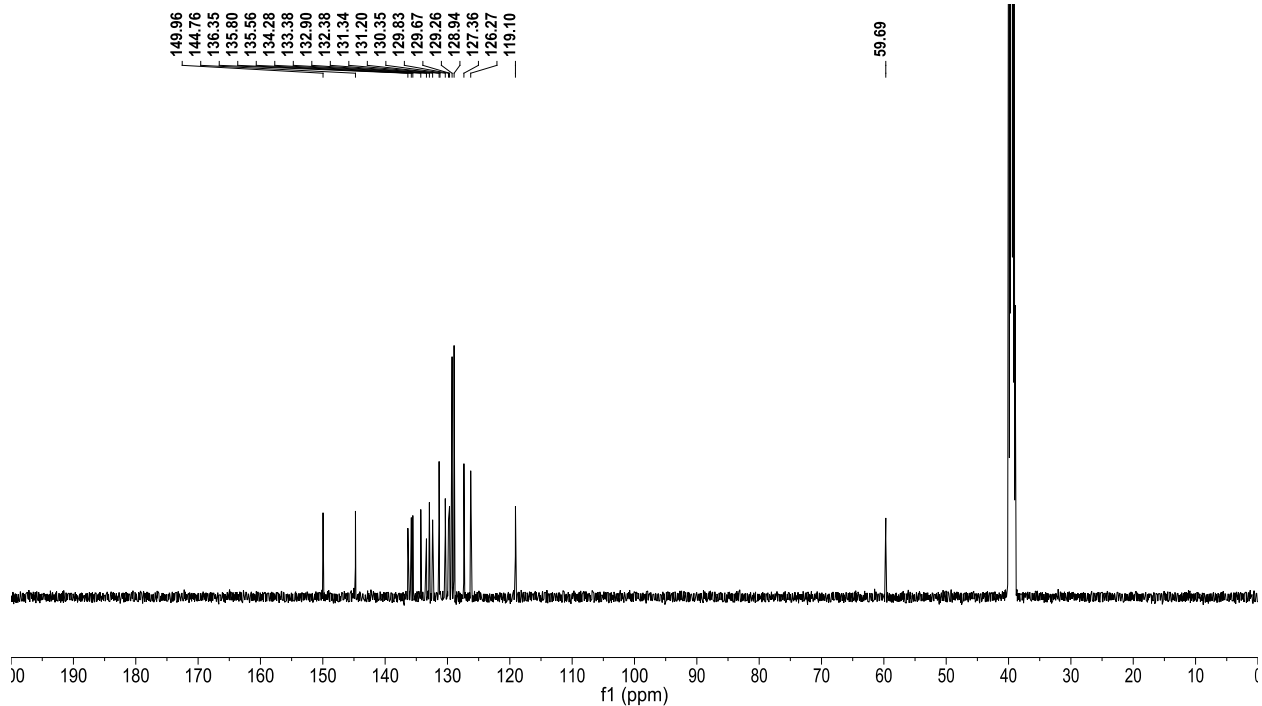
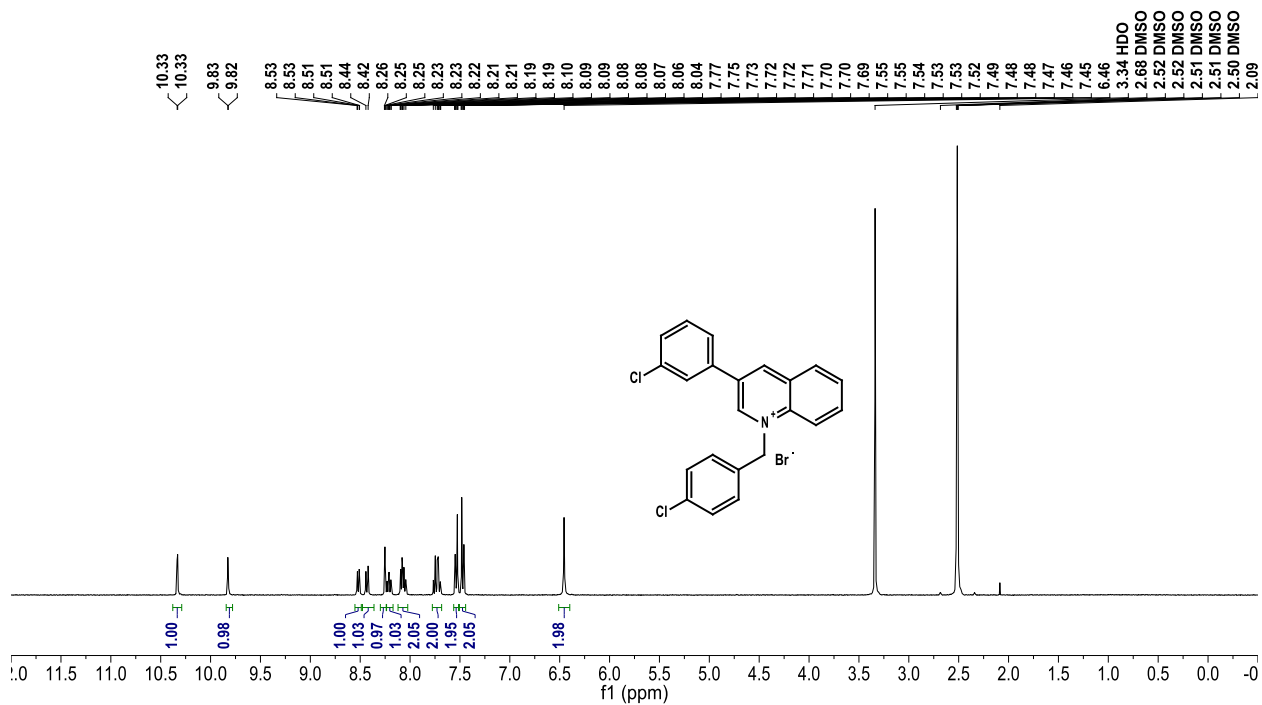
# 1-butyl-3-(3-chlorophenyl)quinolin-1-ium bromide (extra analog)



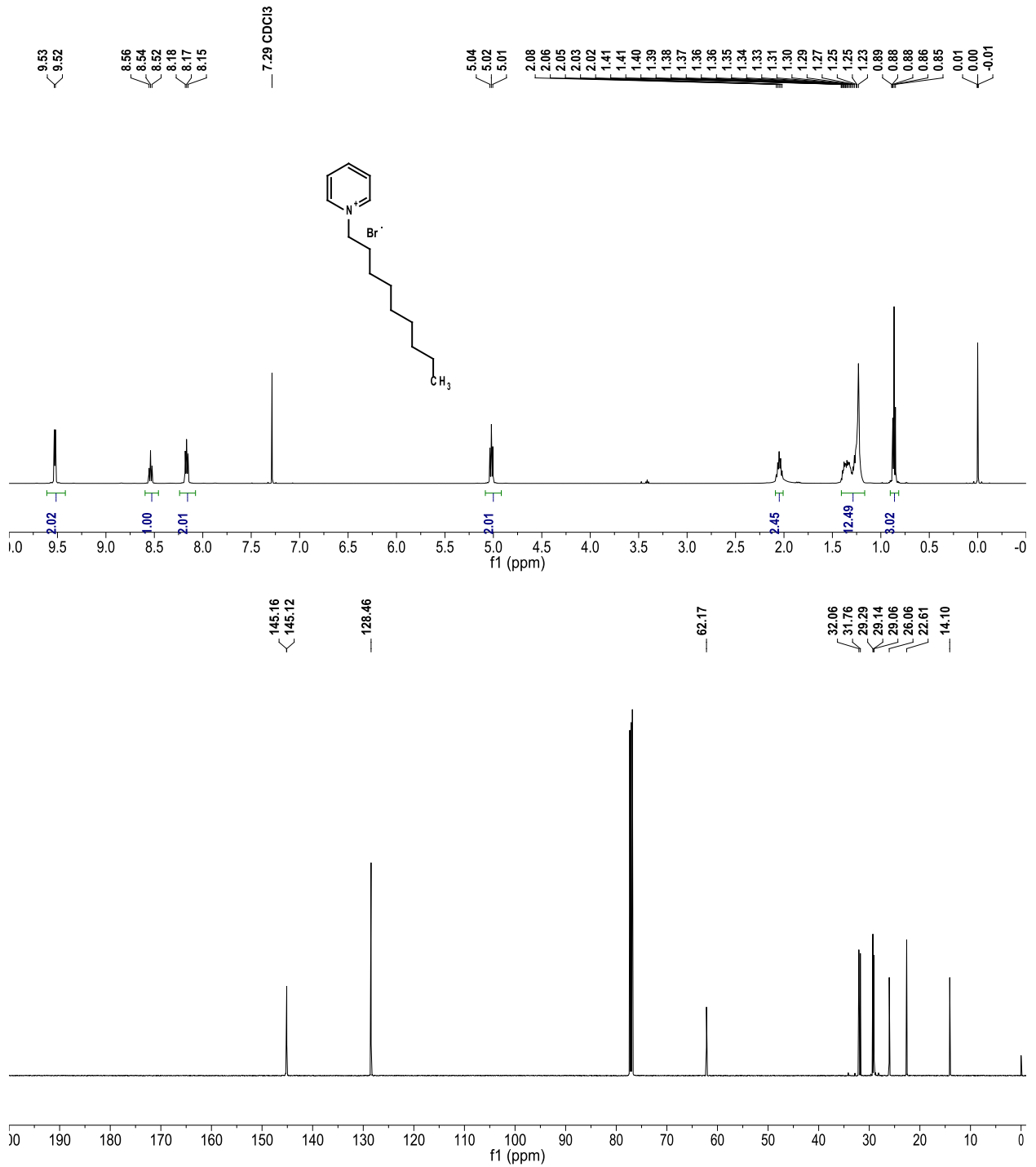
# 1-(4-chlorobenzyl)-3-(6-methylpyridin-2-yl)quinolin-1-ium bromide (extra analog)



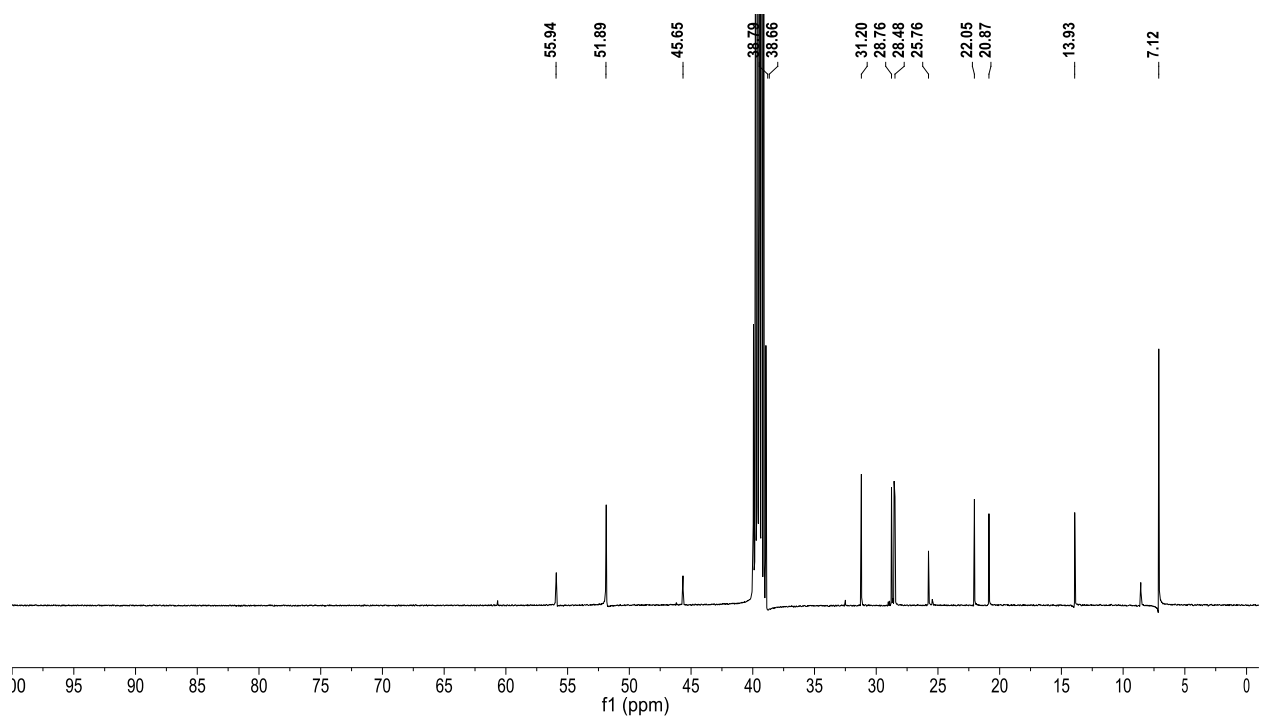
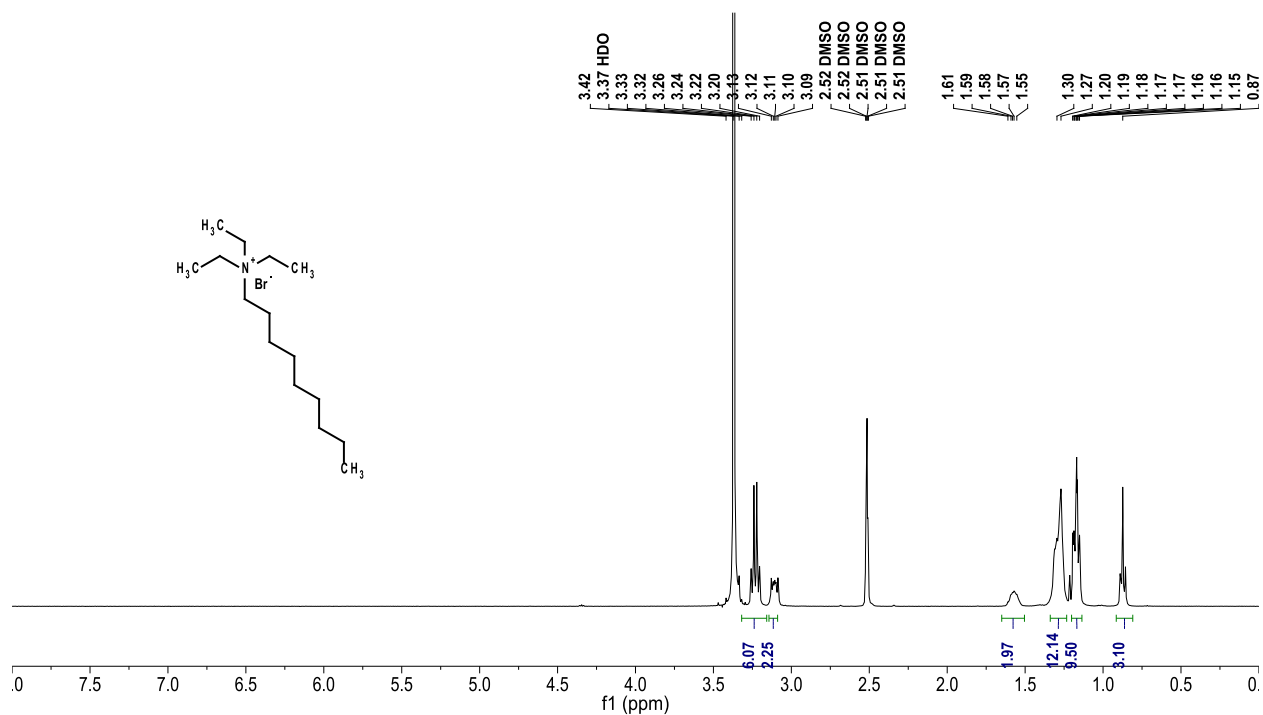
# 1-(4-chlorobenzyl)-3-(3-chlorophenyl)quinolin-1-ium bromide (extra analog)



# 1--Nonylpyridin-1-ium bromide (17)

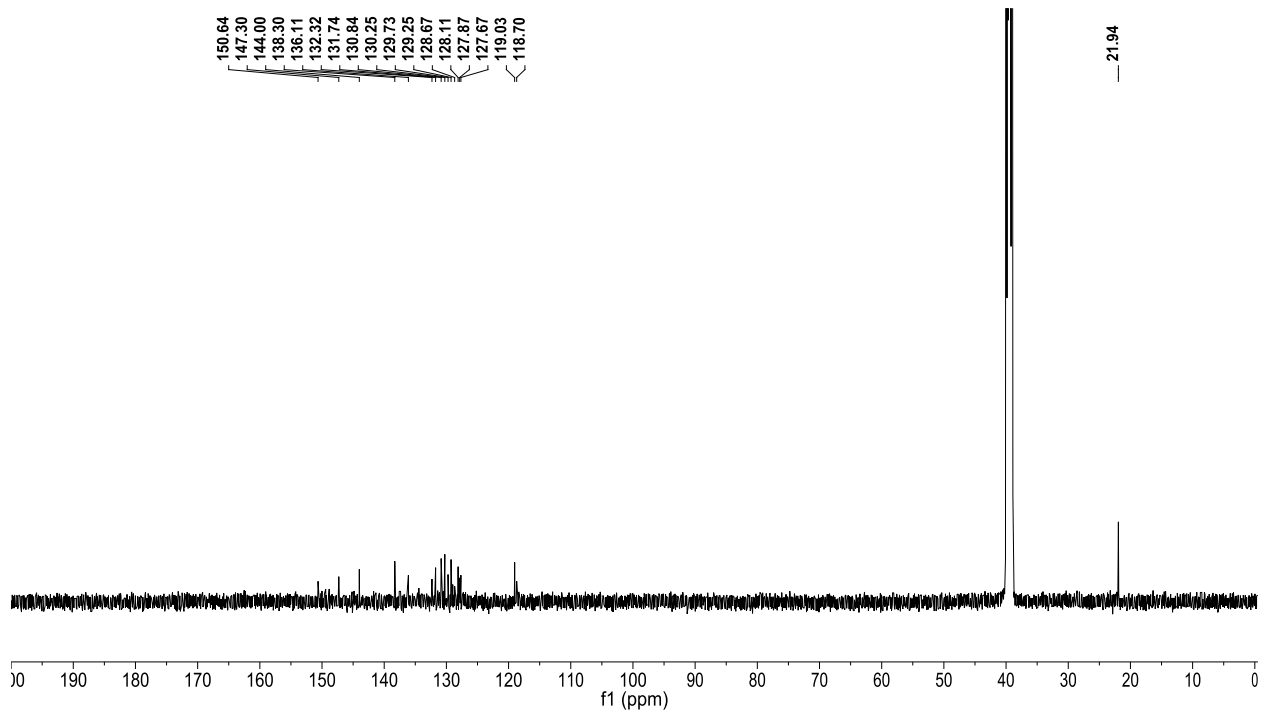
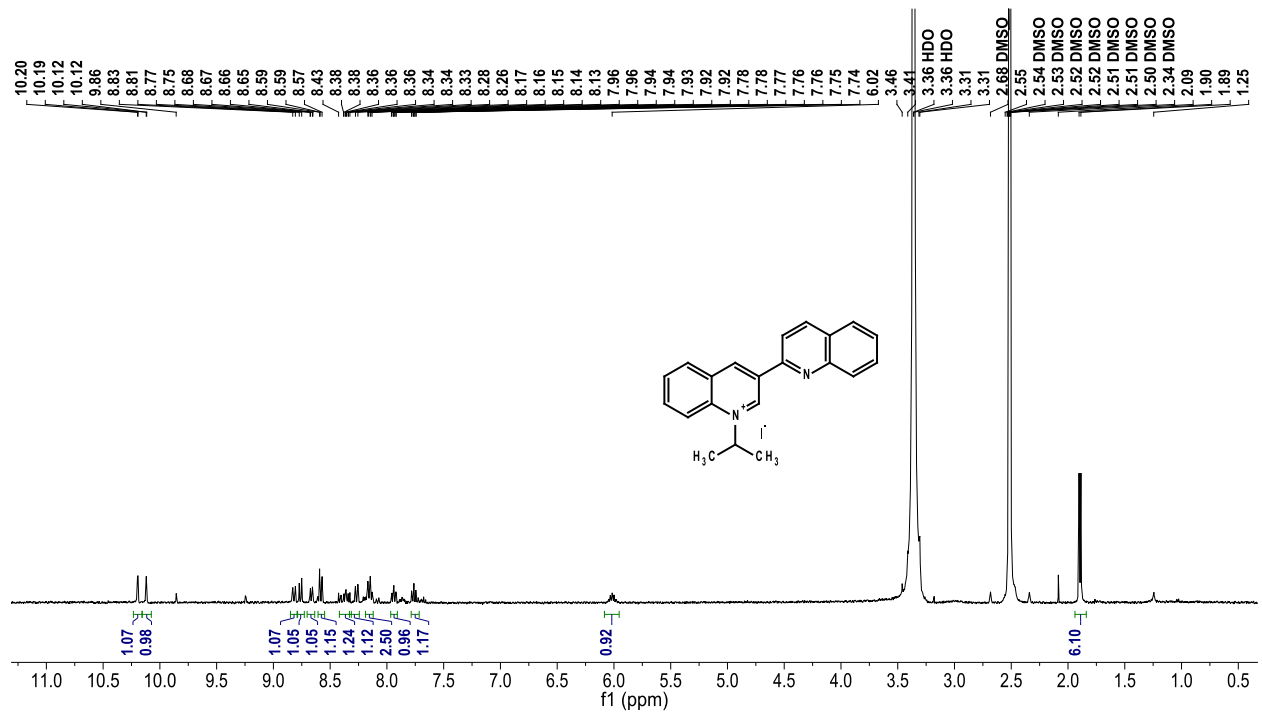


# N,N,N-triethylnonan-1-aminium bromide (18)

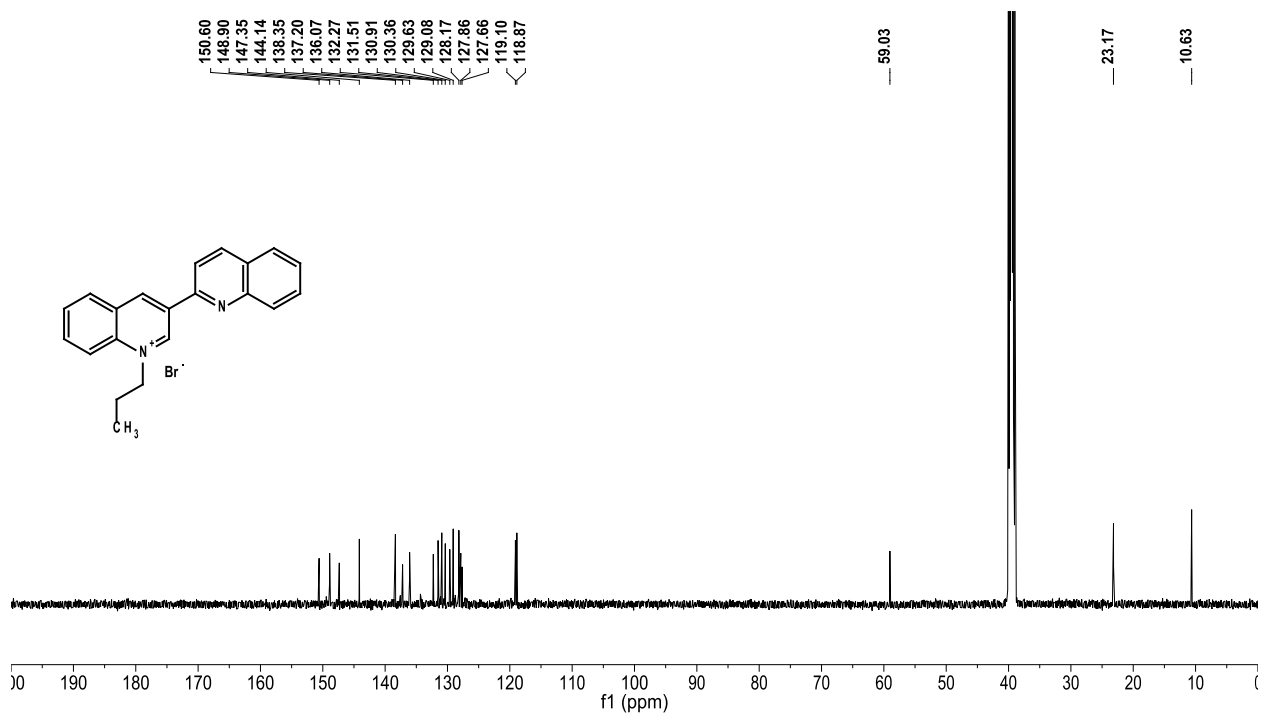
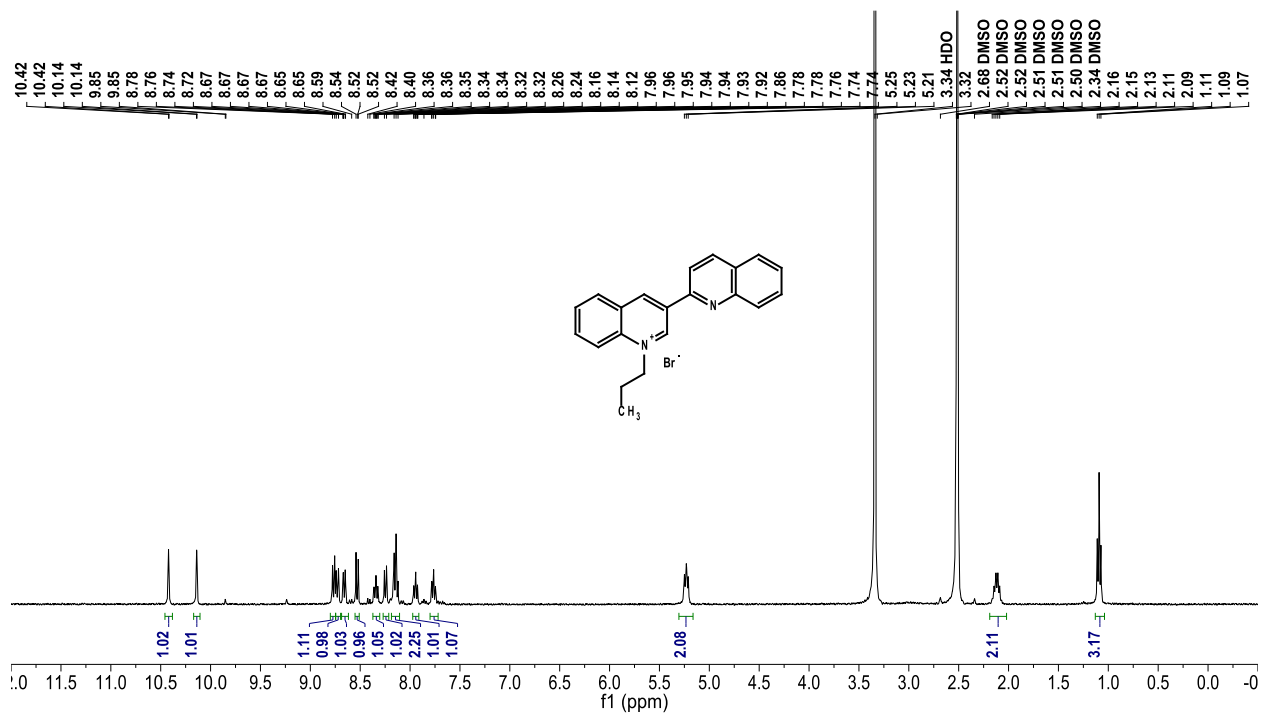




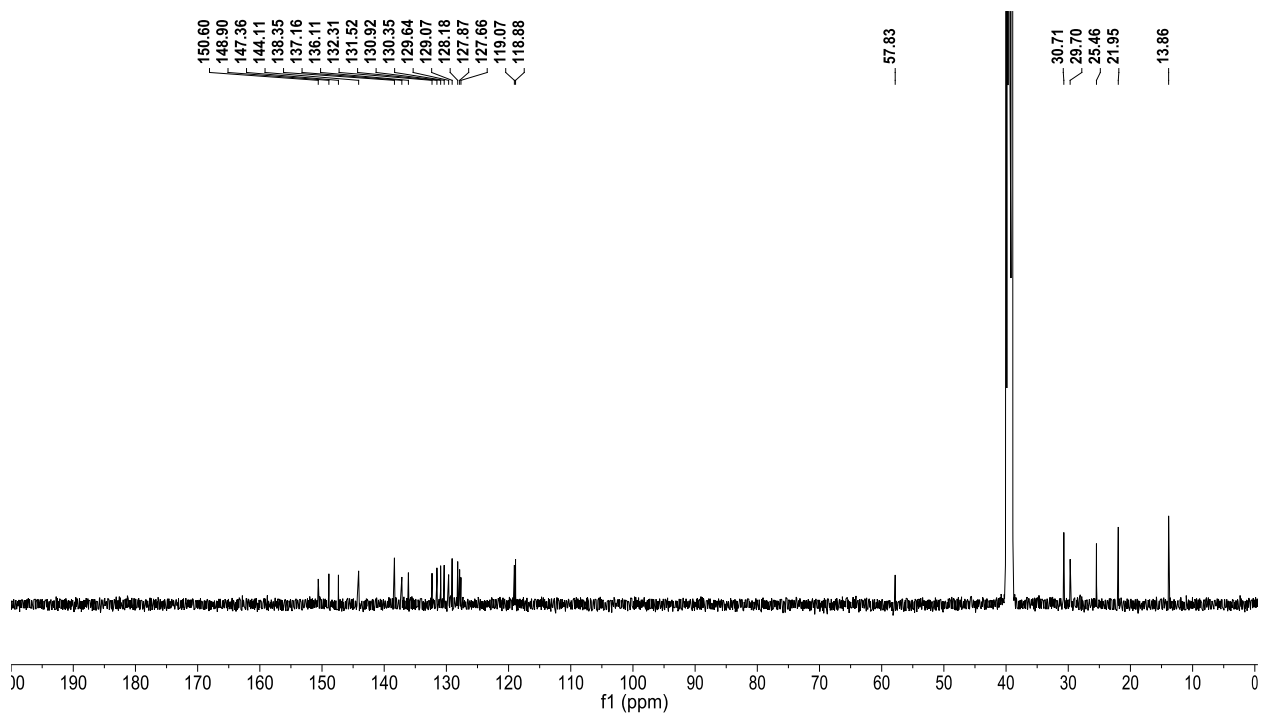
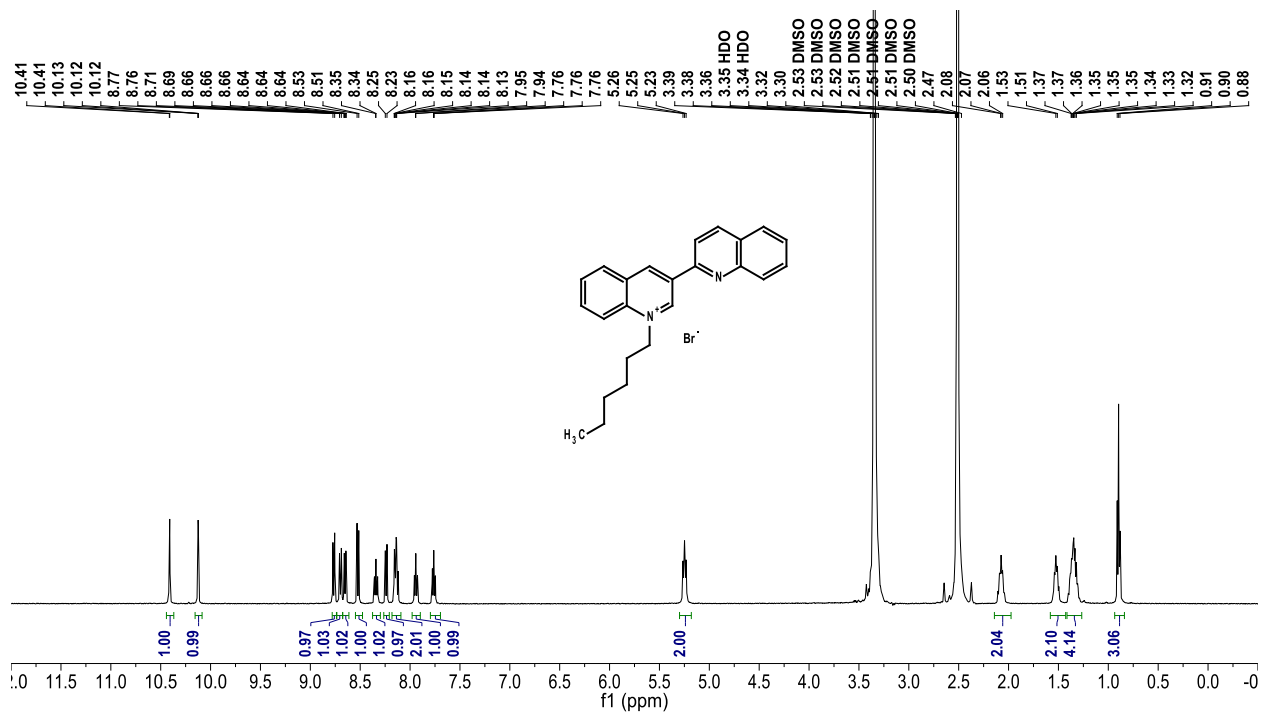
# 1'-isopropyl-[2,3'-biquinolin]-1'-ium iodide (19)



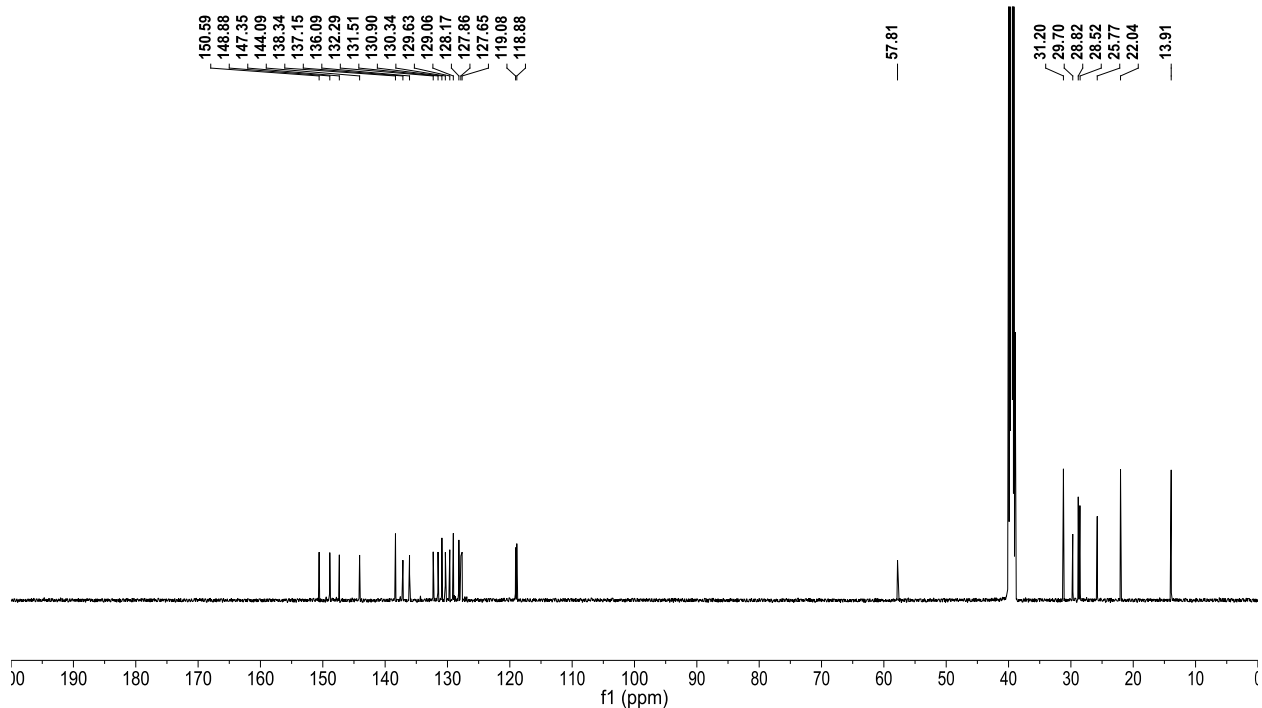
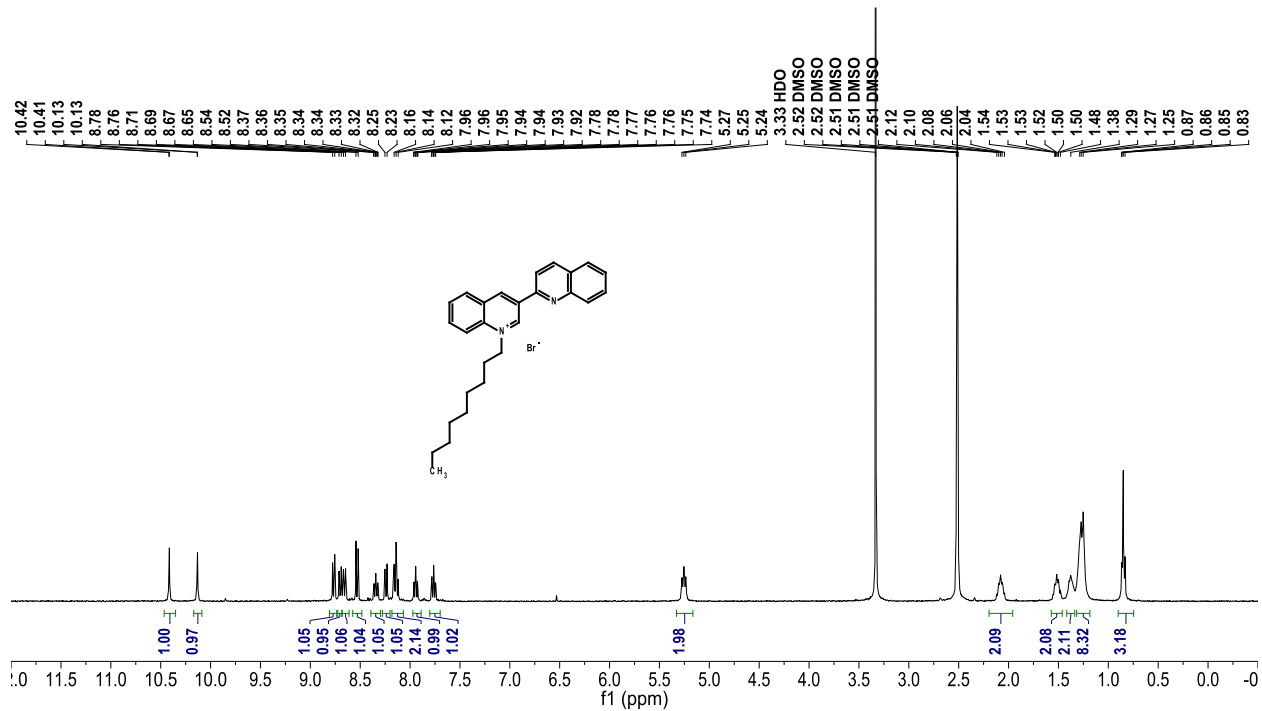
# 1'-propyl-[2,3'-biquinolin]-1'-ium bromide (20)



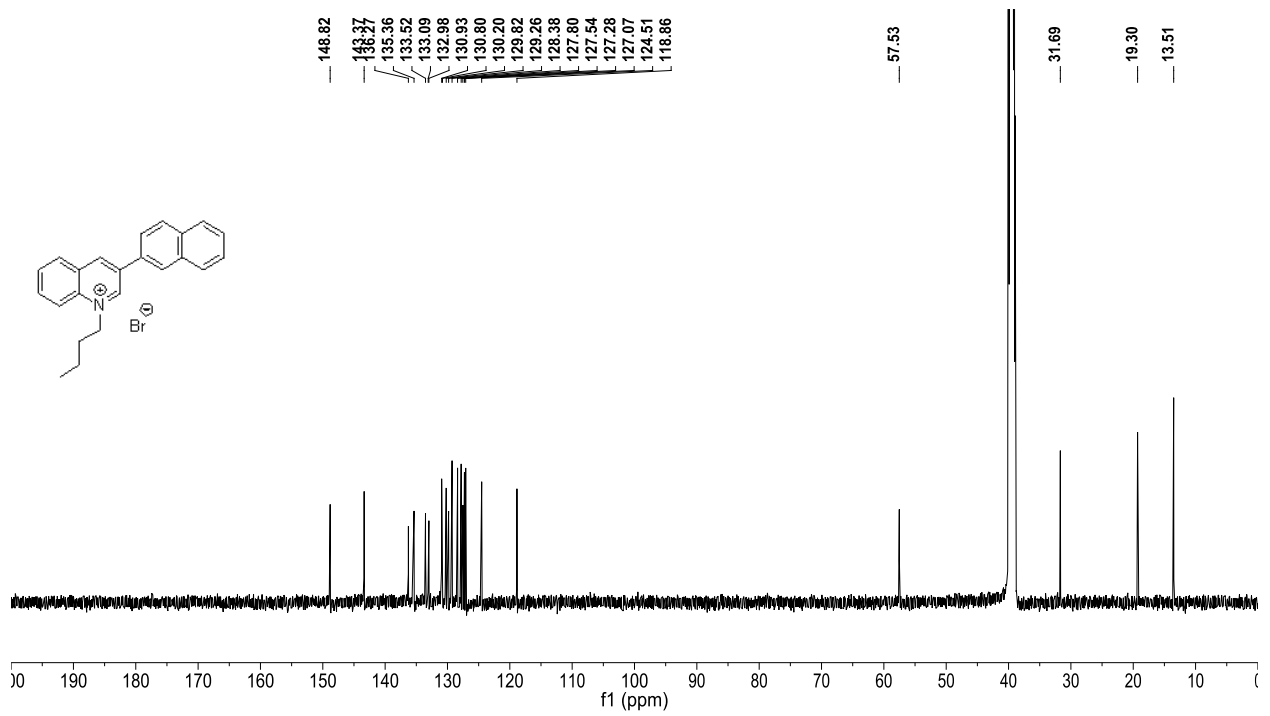
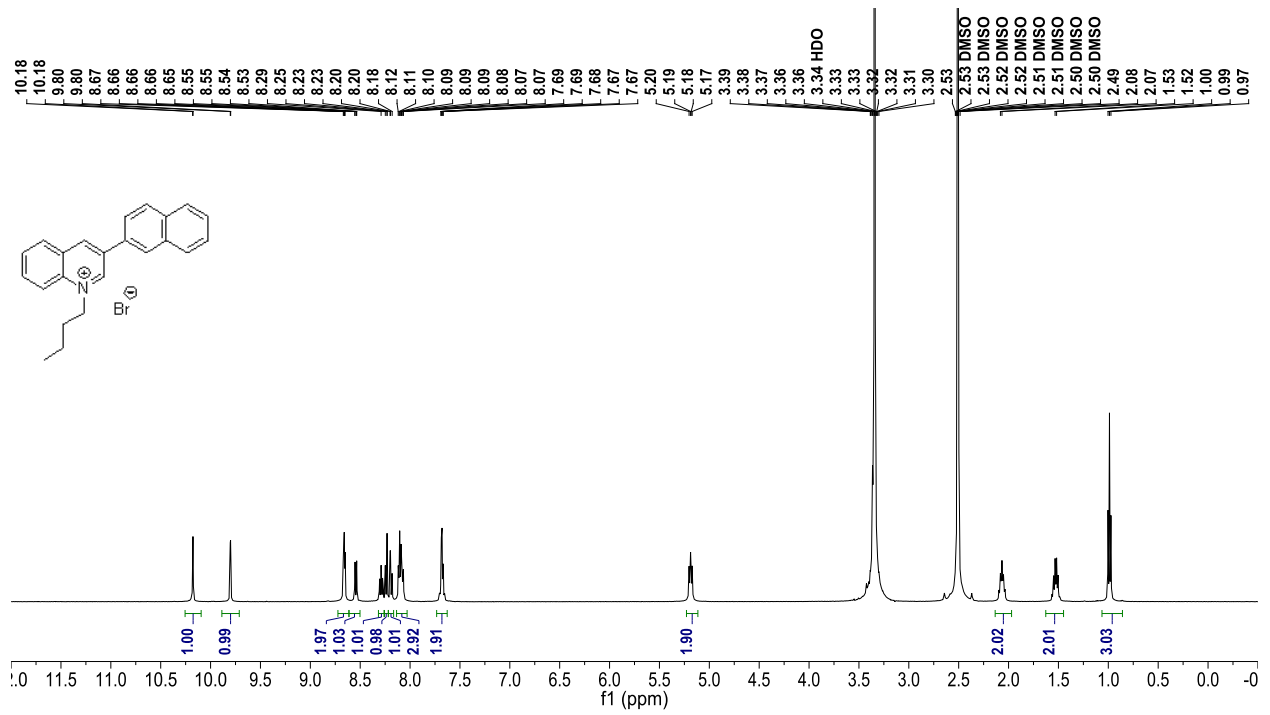
# 1'-hexyl-[2,3'-biquinolin]-1'-ium bromide (21)



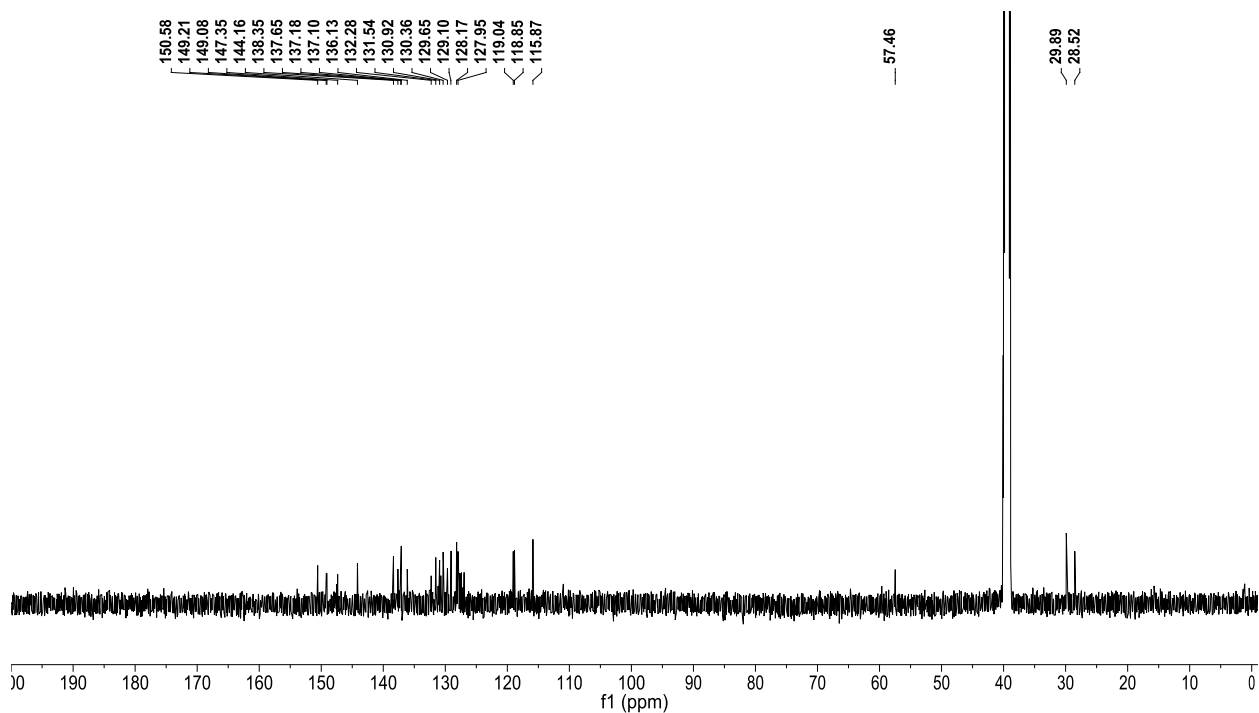
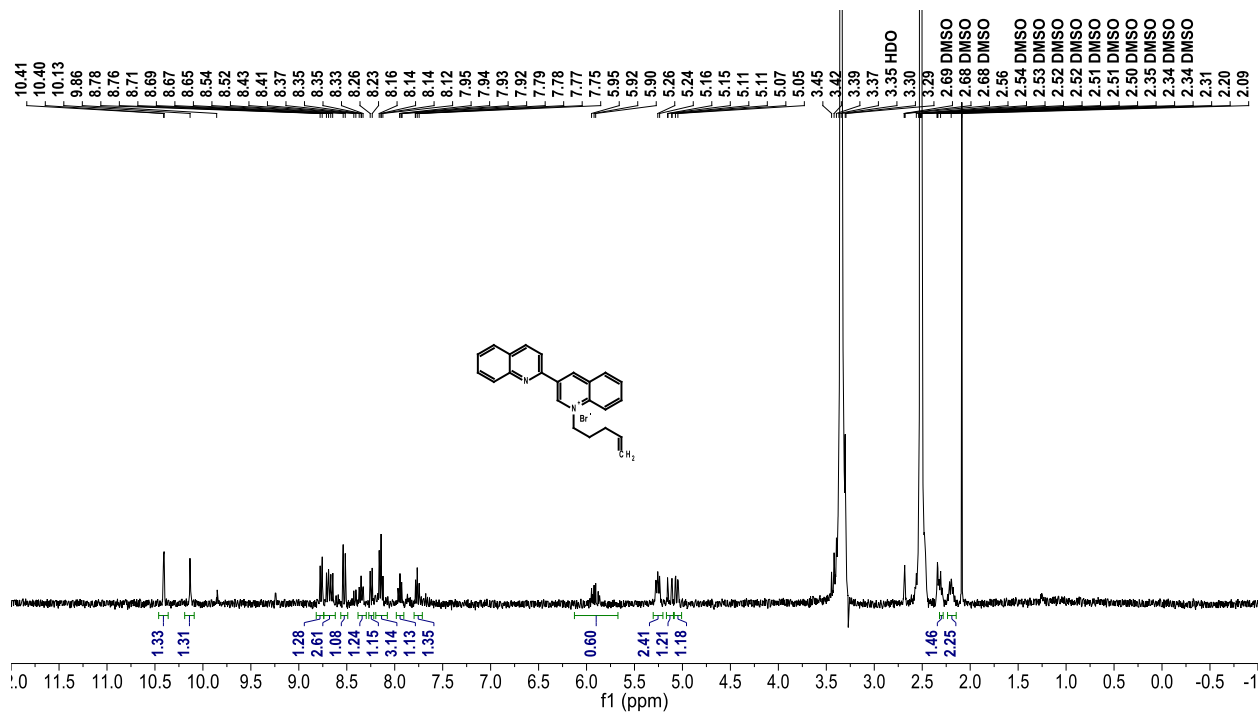
# 1'-nonyl-[2,3'-biquinolin]-1'-ium bromide (22)



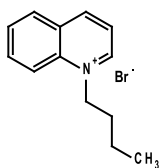
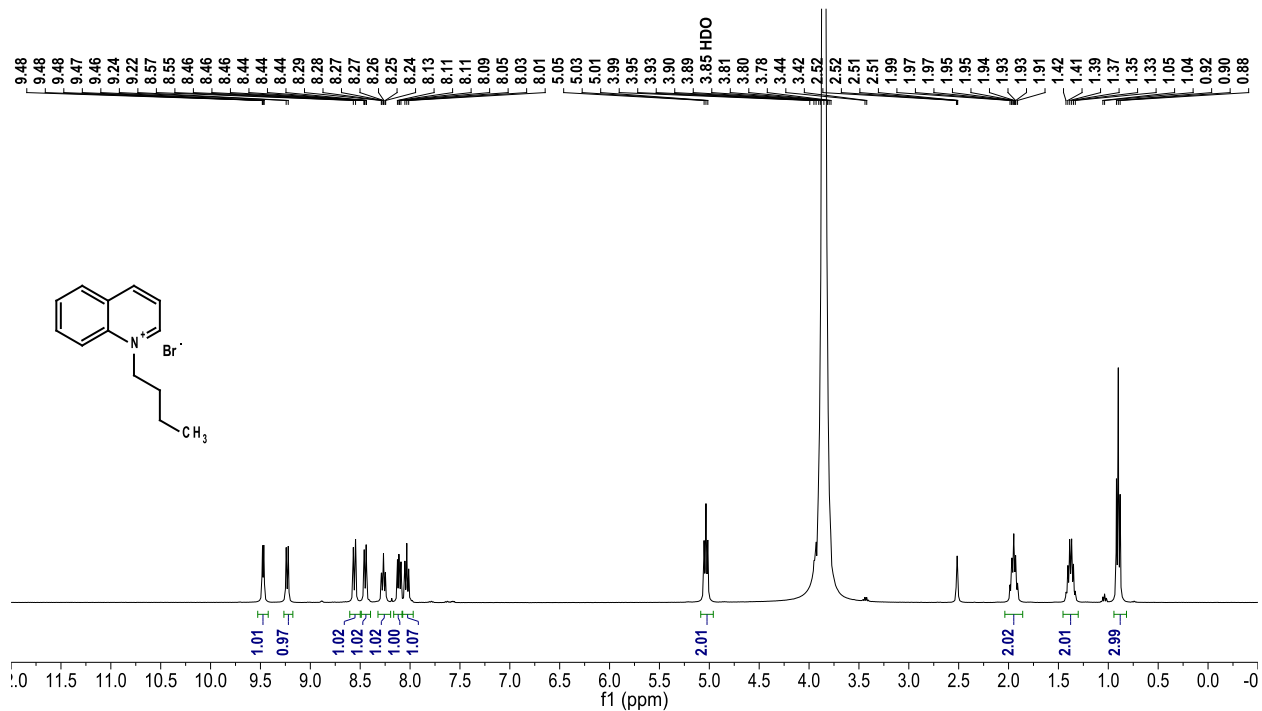
# 1-butyl-3-(naphthalen-2-yl)quinolin-1-ium bromide (23)



**1'-(pent-4-en-1-yl)-[2,3'-biquinolin]-1'-ium bromide (24)**



# 1-butylquinolin-1-ium bromide



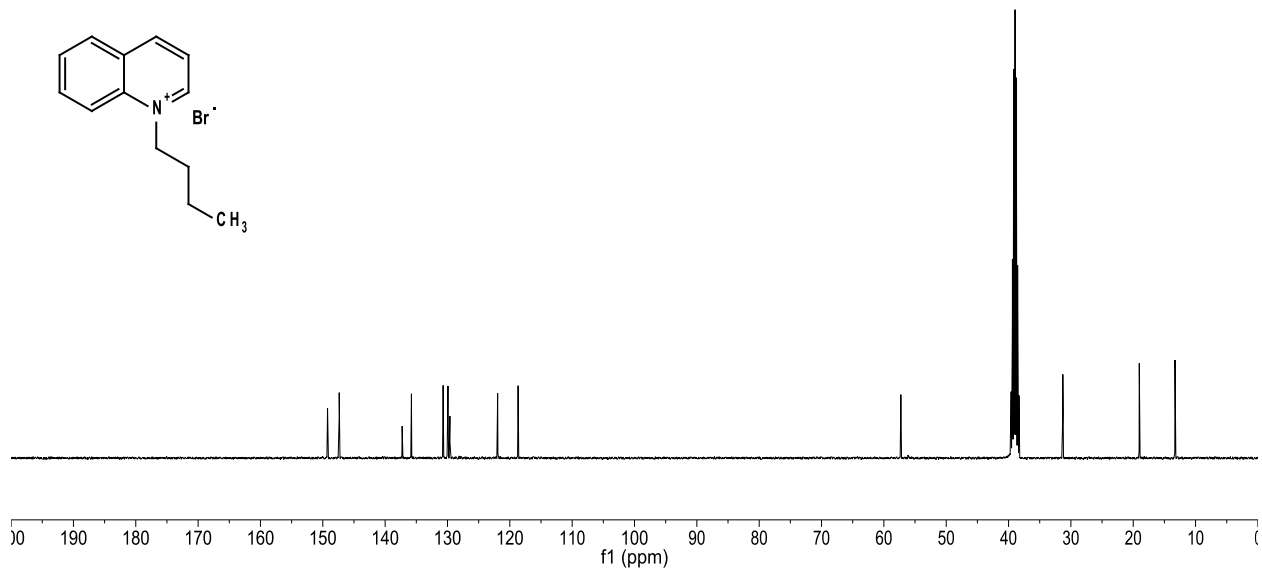
149.24  
147.37  
137.27  
135.78  
130.70  
129.92  
129.61  
121.95  
118.67

57.28

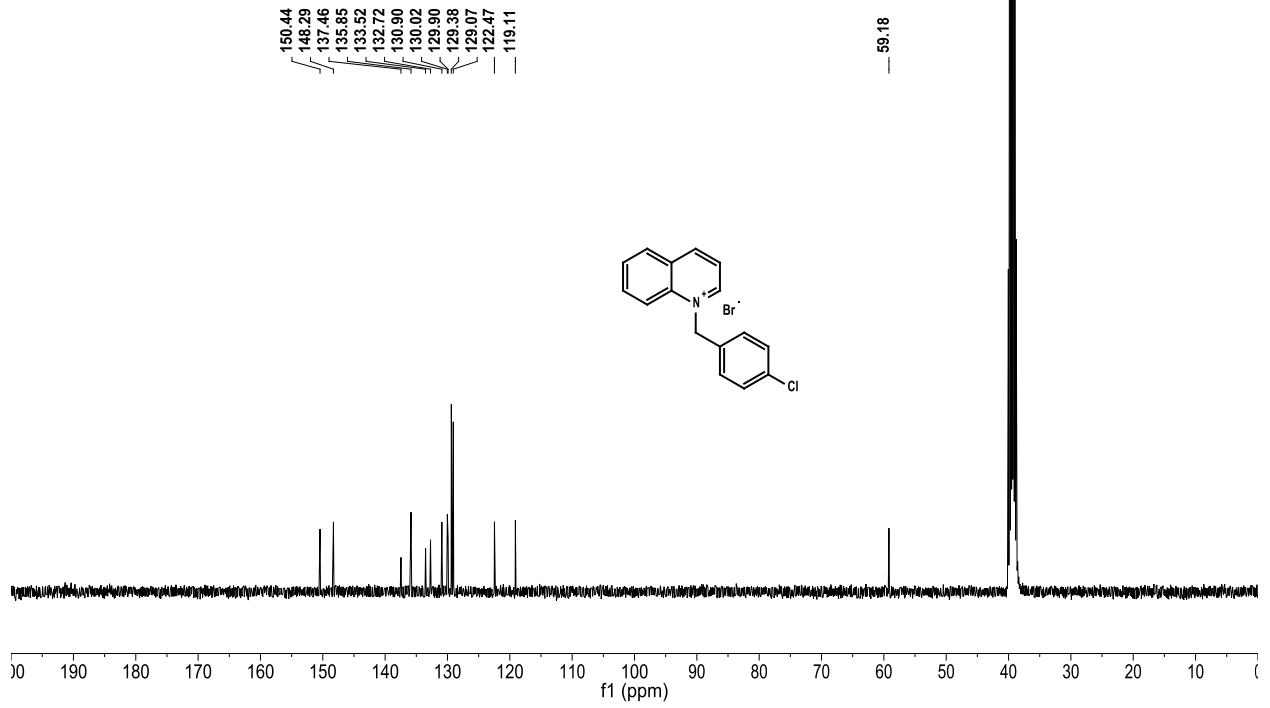
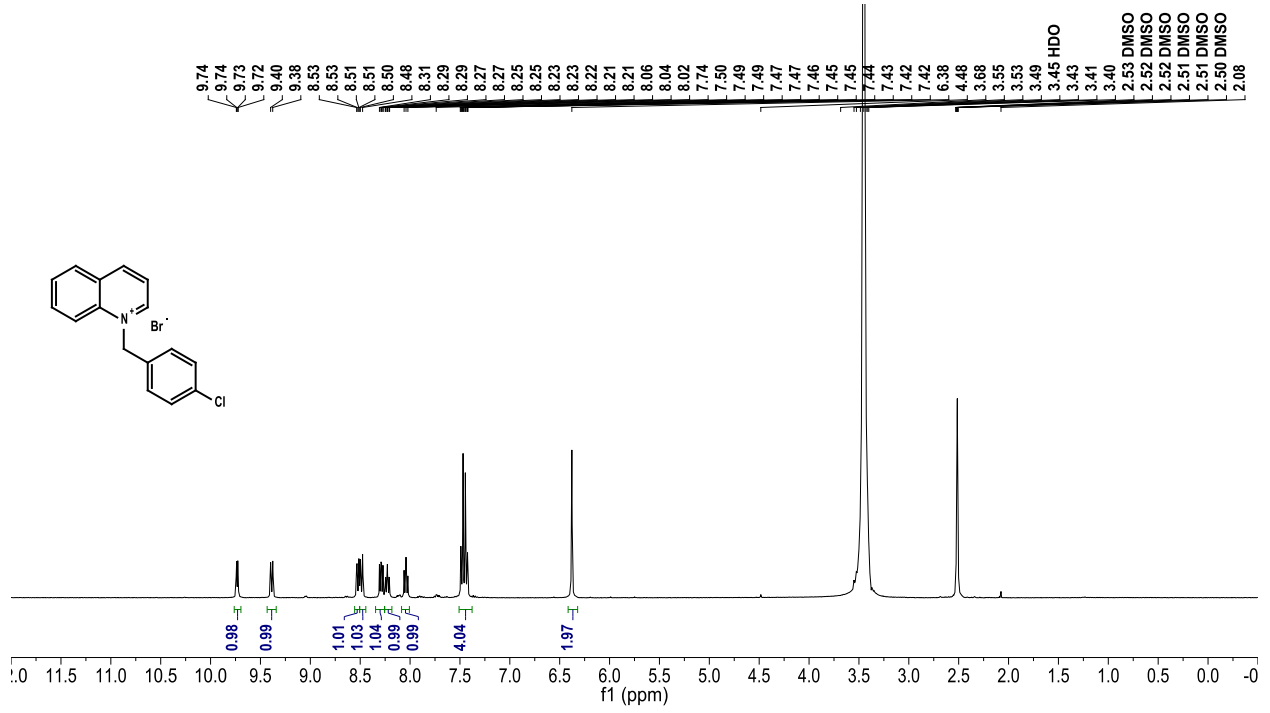
31.29

19.03

13.30



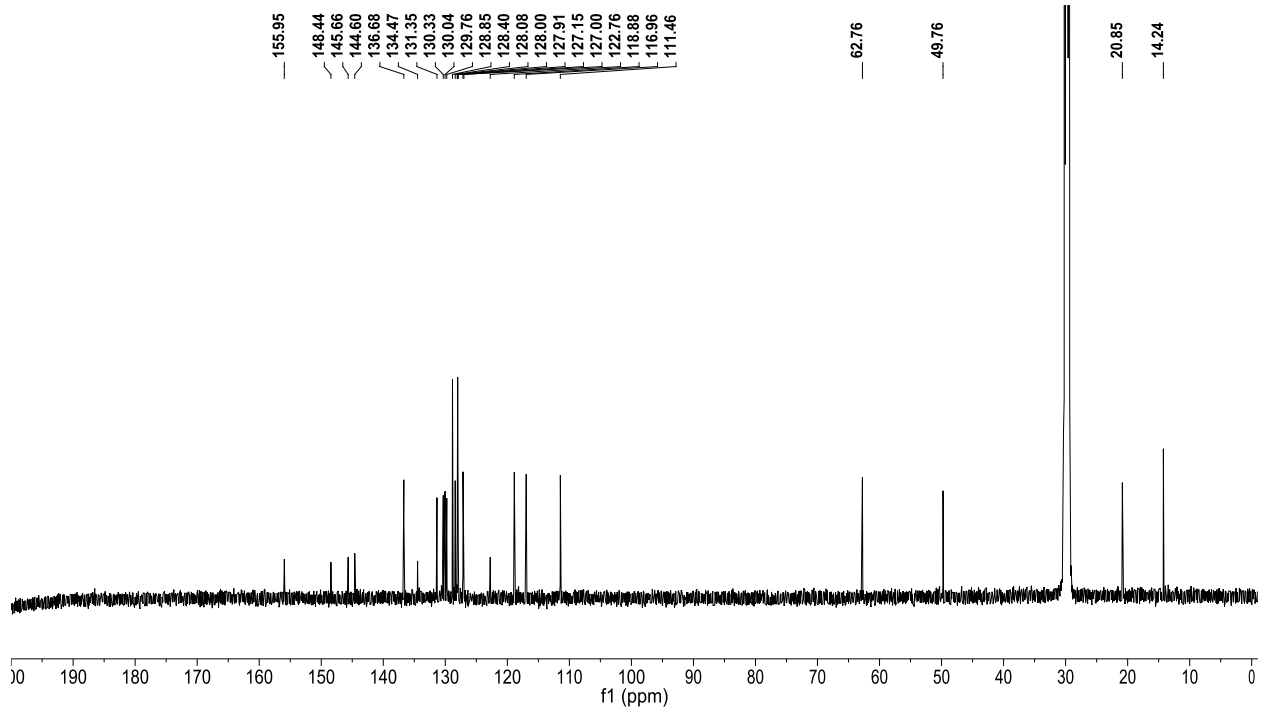
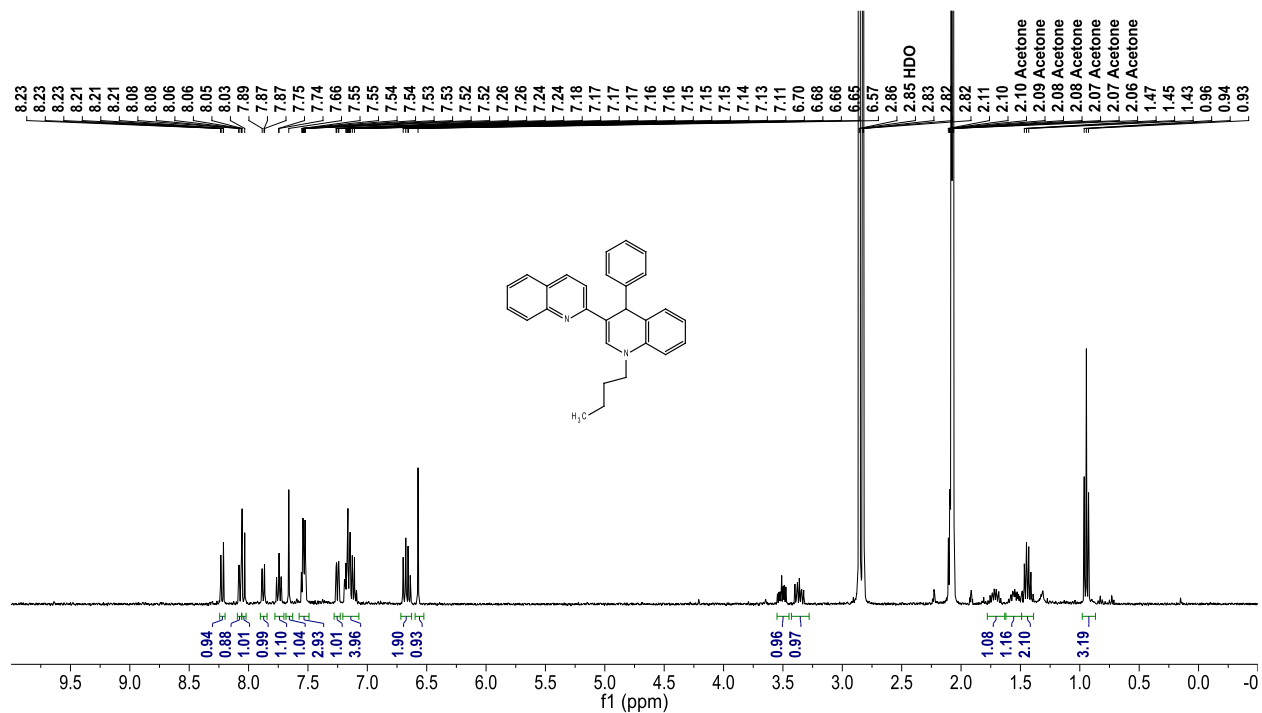
# 1-(4-chlorobenzyl)quinolin-1-ium bromide



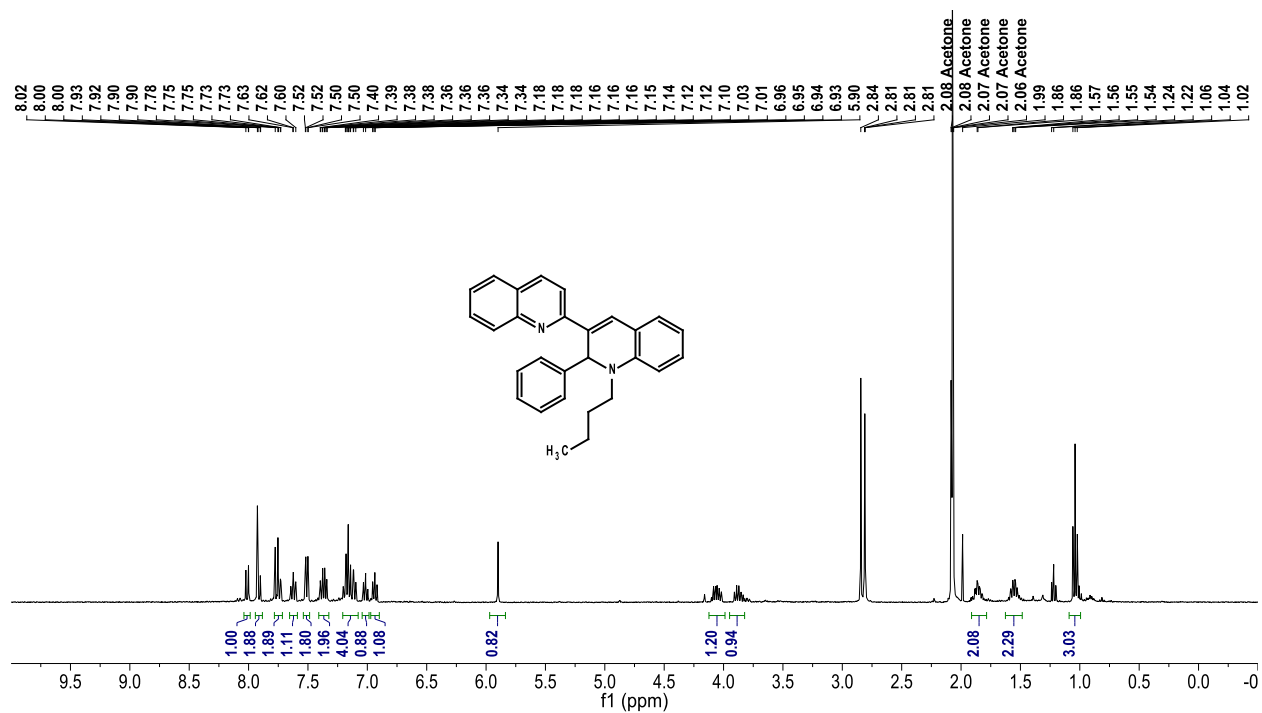


# Miscellaneous analogs

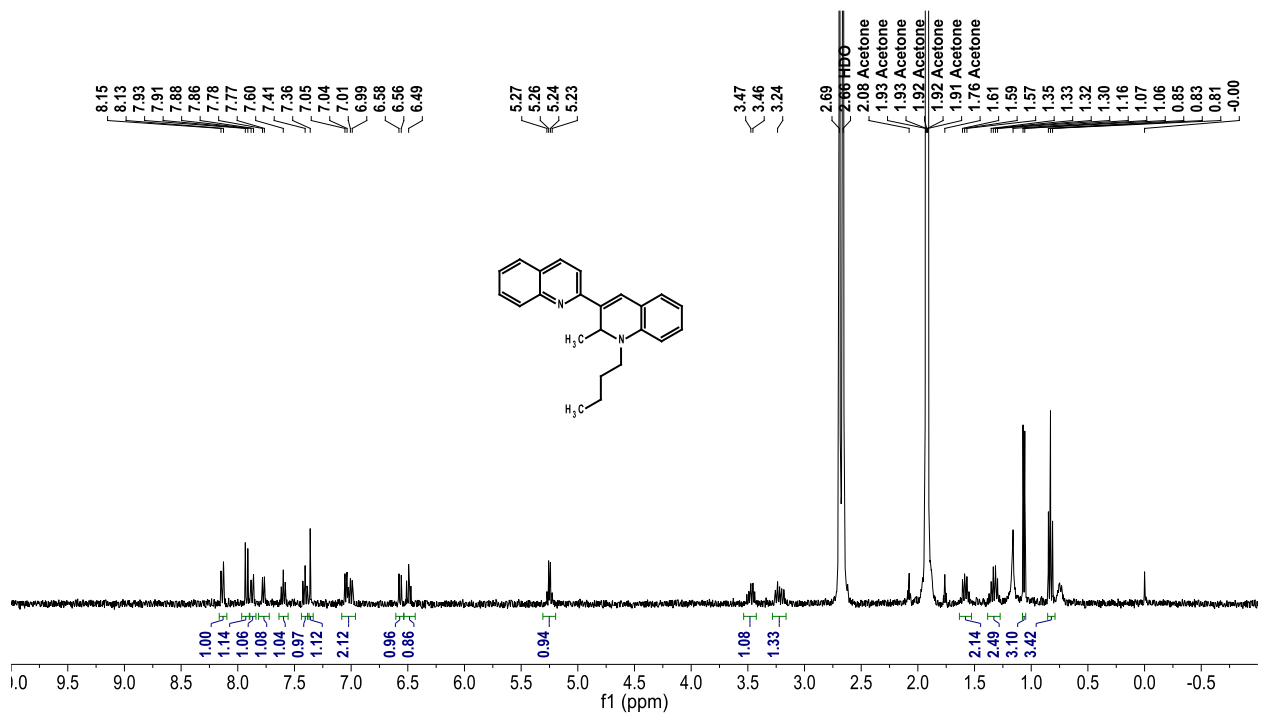
## 1'-butyl-4'-phenyl-1',4'-dihydro-2,3'-biquinoline (8)



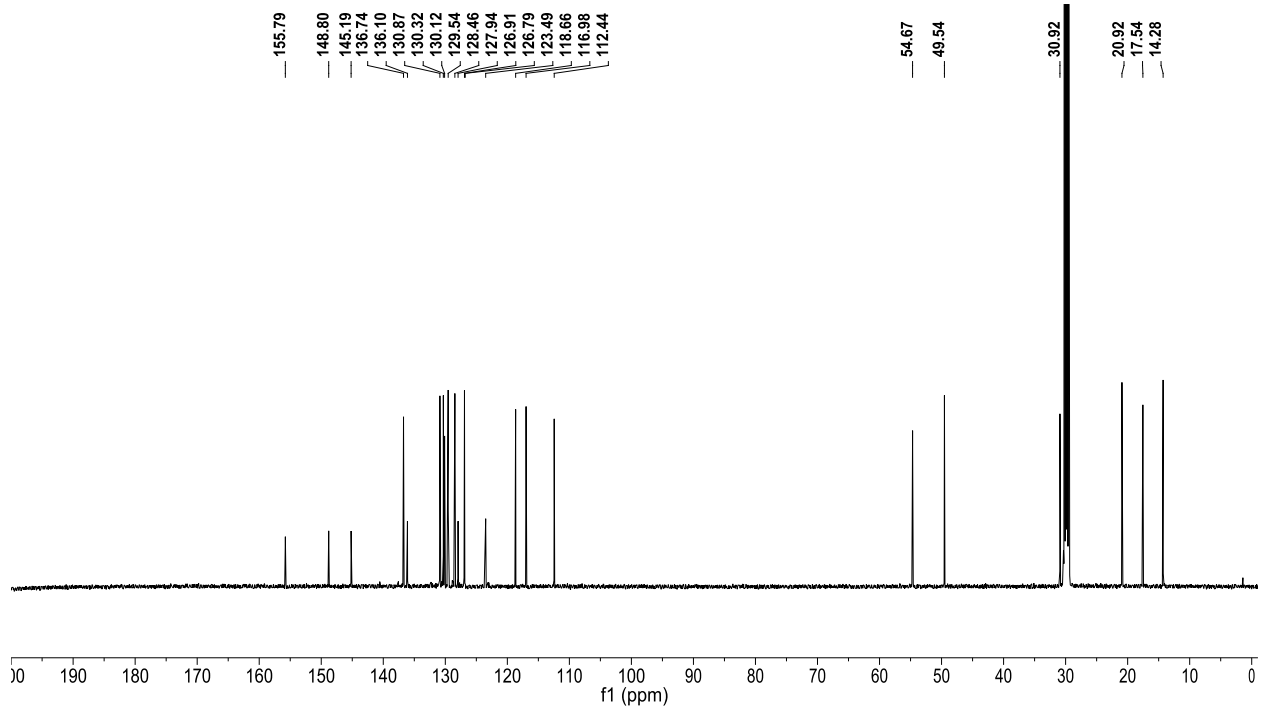
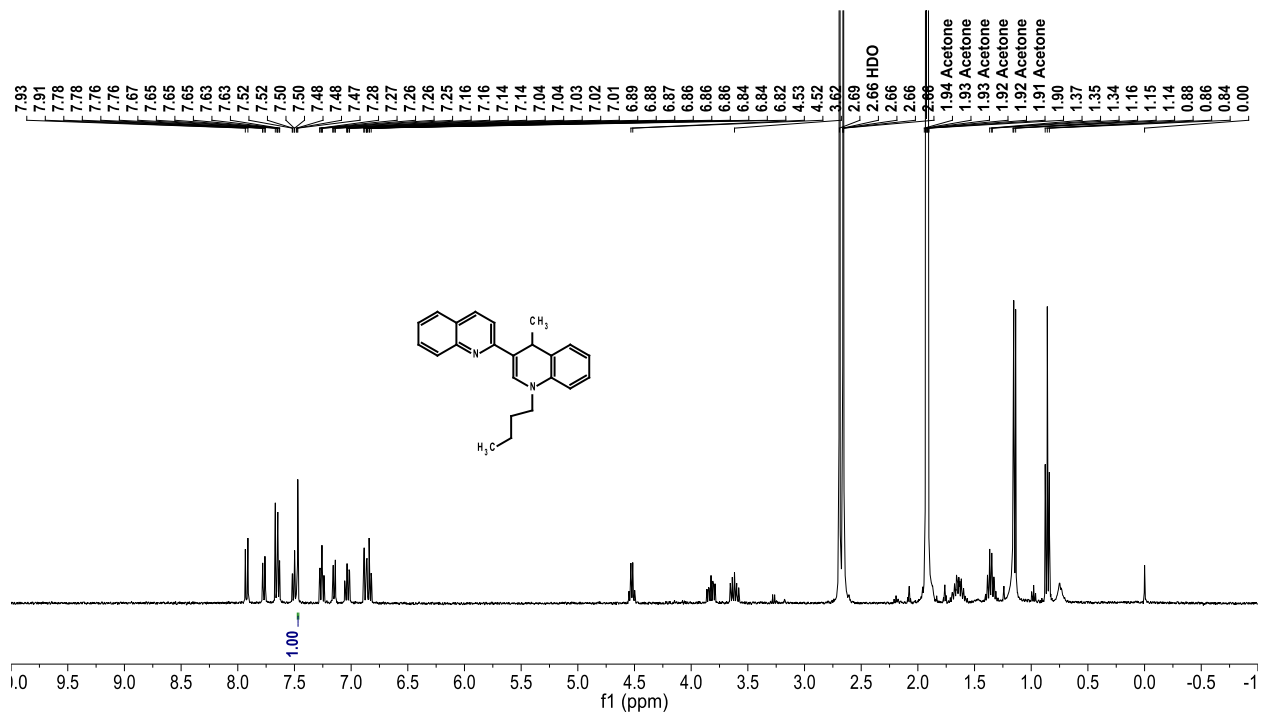
**1'-butyl-2'-phenyl-1',2'-dihydro-2,3'-biquinoline (9)**



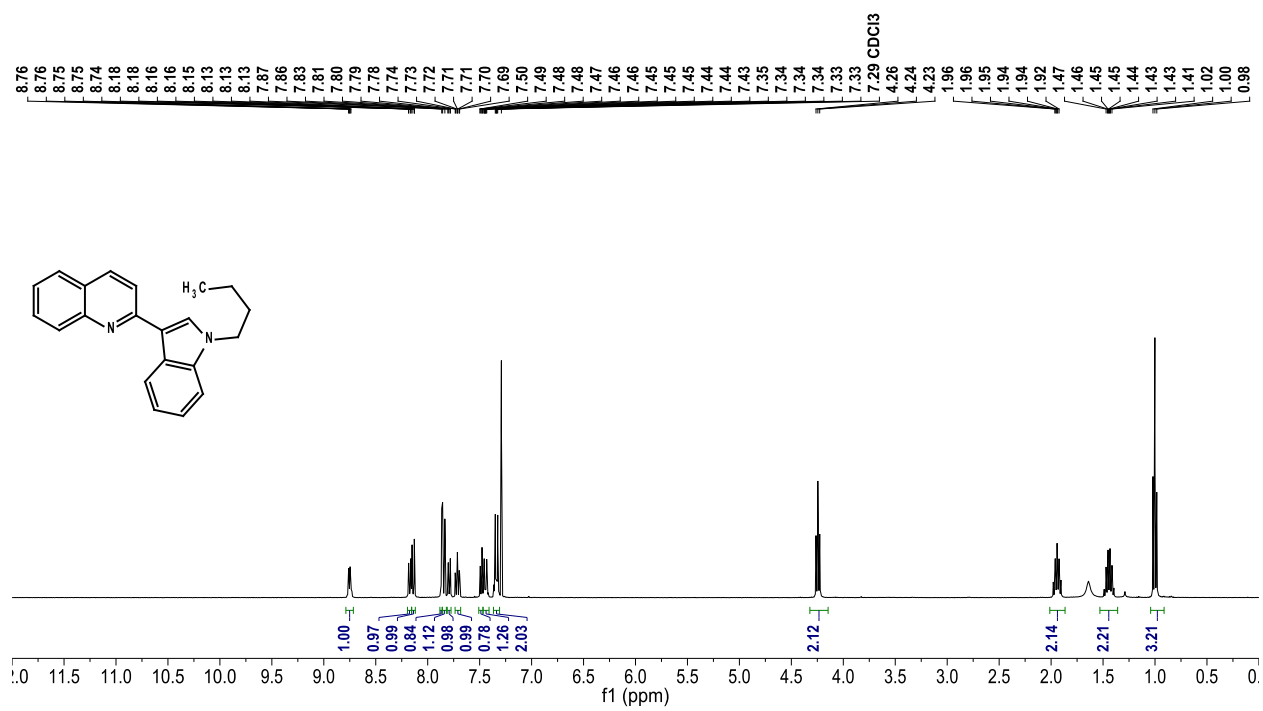
**1'-butyl-2'-methyl-1',2'-dihydro-2,3'-biquinoline (10)**



# 1'-butyl-4'-methyl-1',4'-dihydro-2,3'-biquinoline (11)



## 2-(1-butyl-1*H*-indol-3-yl)quinoline (12)



# 10-butylacridin-9(10H)-one (15)

