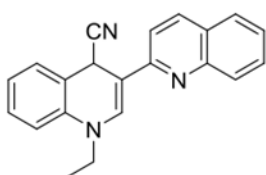
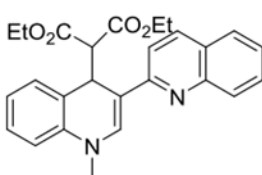


Commercial analogue analysis:

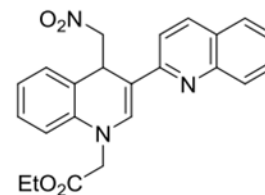
A1



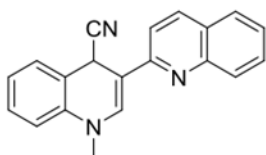
A2



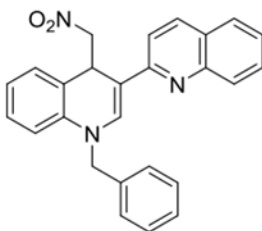
A3



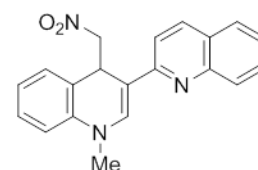
C4



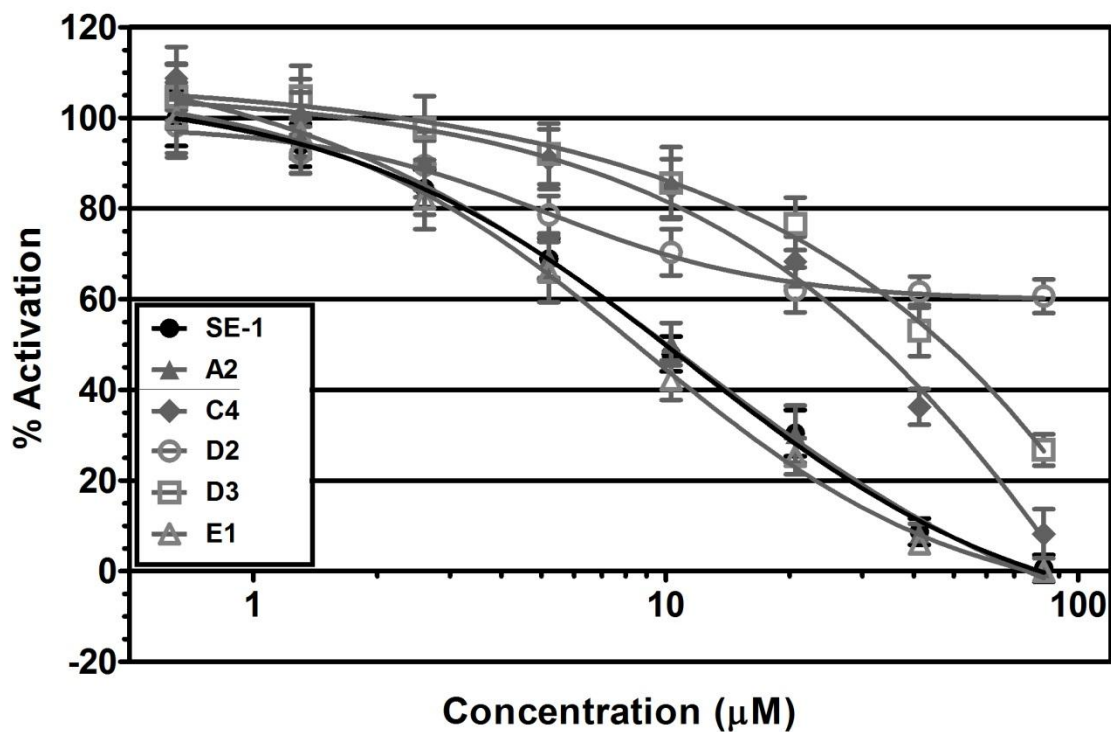
D3



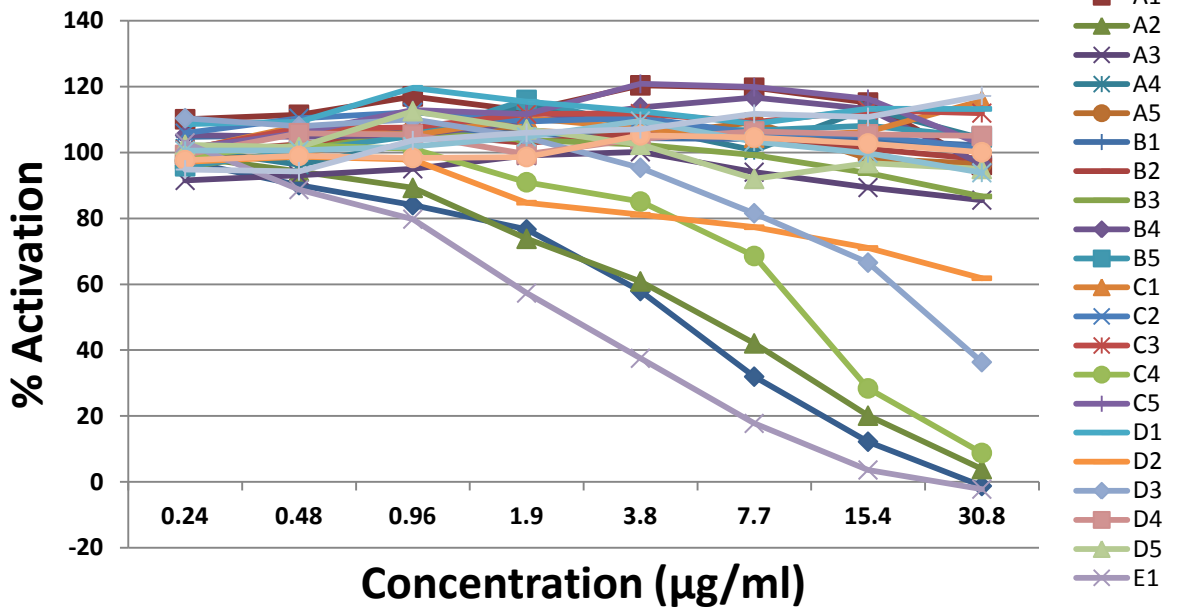
E1

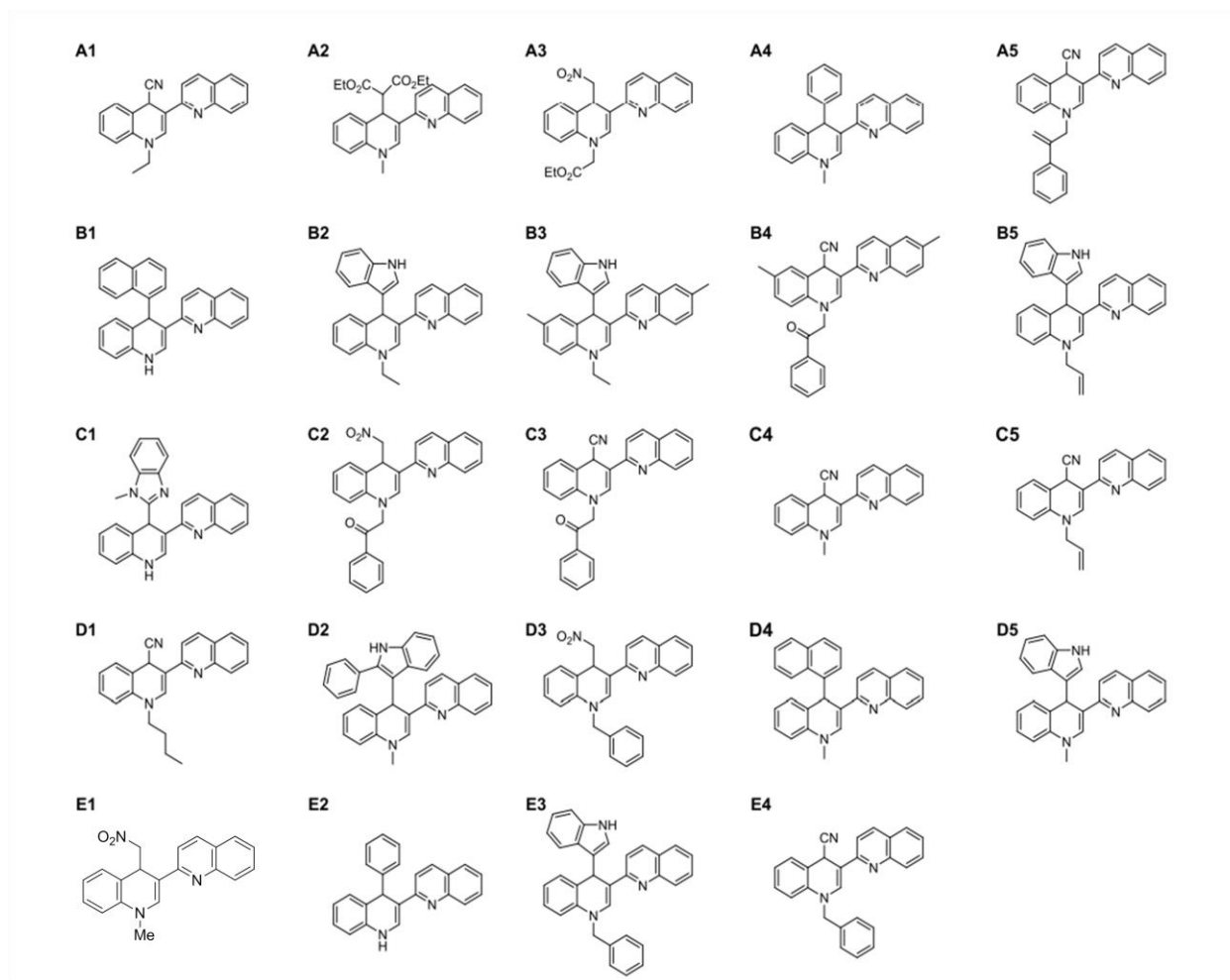


VirF

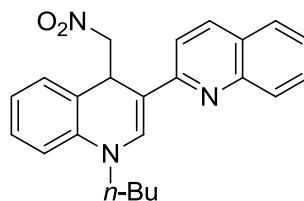


VirF

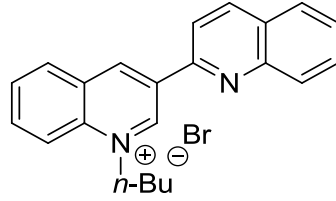




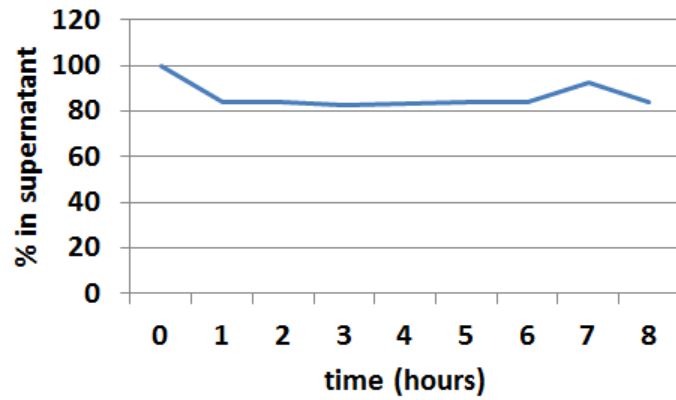
Stability analysis:



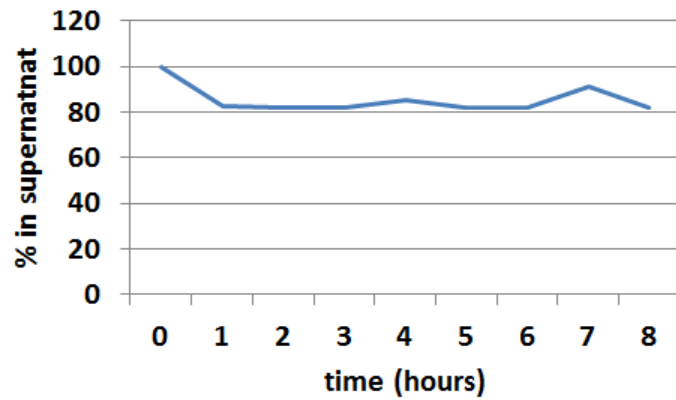
All of this material was degraded before the first injection of the stability assay in both the PBS (No nucleophile) control and the samples containing 5 X GSH.



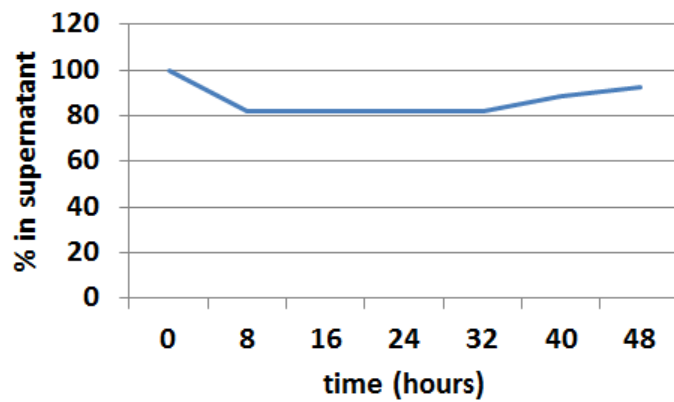
1. CMC-311-49w/ 5X GSH

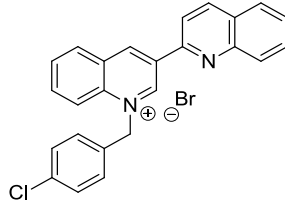


2. CMC-311-49w/o NU:8 hours

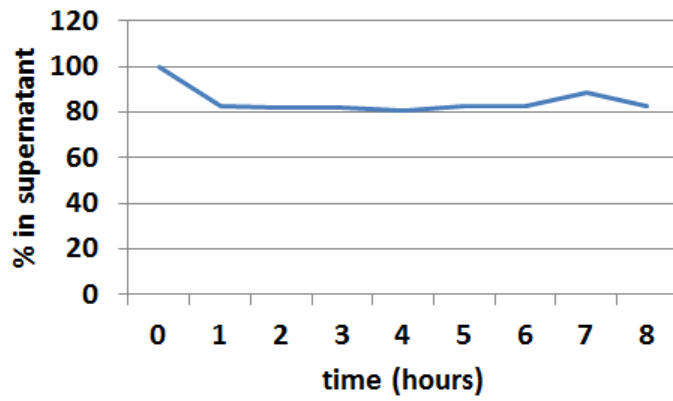


3. CMC-311-49w/o NU:48 hours

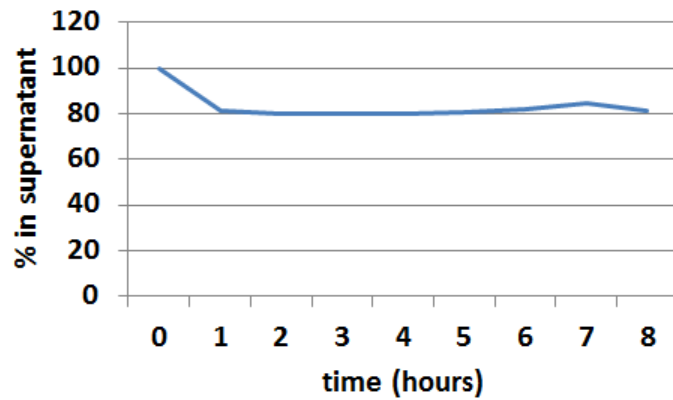




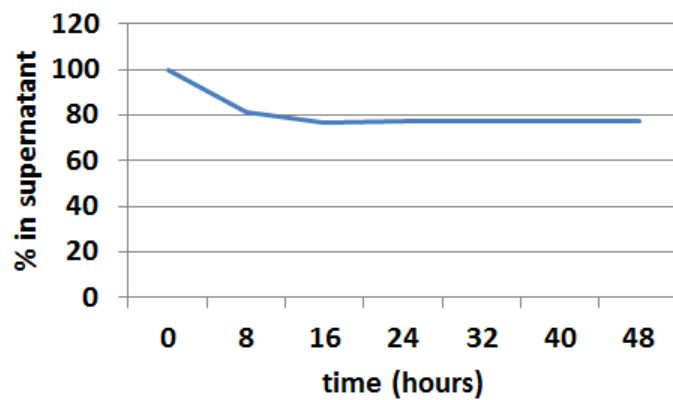
4. CMC-311-70w/ 5X GSH

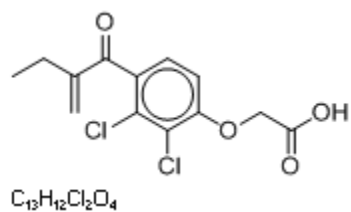


5. CMC-311-70w/o NU: 8 hours



6. CMC-311-70w/o NU: 48 hours





7. Control reactions showing the addition of GSH to Ethacrynic Acid in PBS (1/1) over 8 hours (PBS control in blue and 5 X GSH in red).

