

Supporting Information

Development of Biocompatible Nanocubes as a T_1 -Contrast Enhancer for MR Imaging of Primary and Metastatic Liver Cancer

*Xiao-xia Song, Xian-zhu Xu, Hong-ping Wan, and Qun Tang**

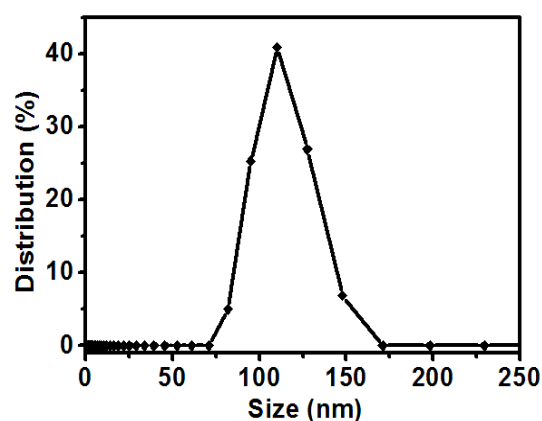


Figure S1. Hydrodynamic diameter distribution curve of the dextran-coated KMnF_3 NCs under physiological conditions.

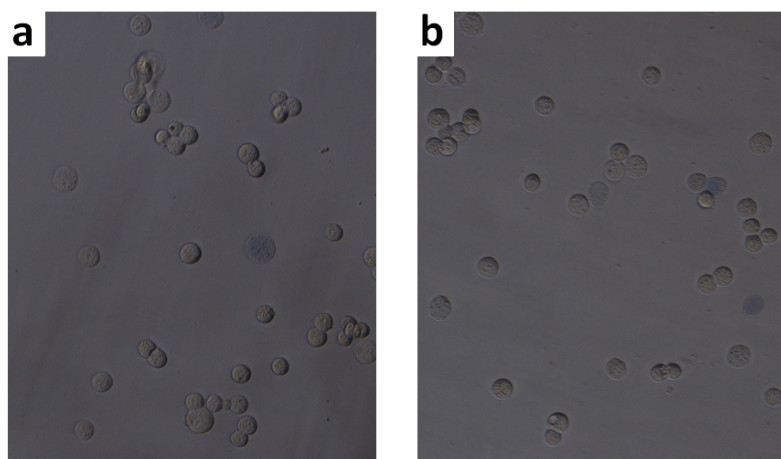


Figure S2. Microscopic observations of the liver cell before (a) and after (b) treated with 1 mM dextran-coated KMnF_3 nanocube solutions via typlan blue staining.

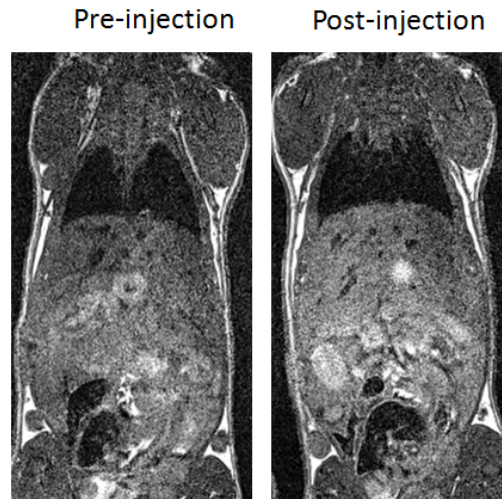


Figure S3. Representative T_1 MR images of metastatic cancer bearing mice intravenously injected with commercial MnDPDP at the dosage of 5 mmol/kg.

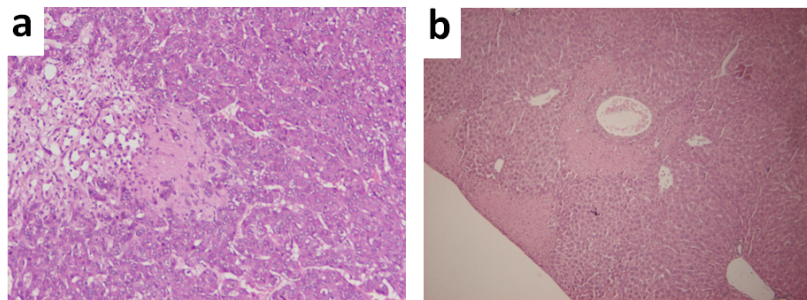


Figure S4. H&E staining of primary HCC cancer (a) and colorectal cancer (CRC) liver metastasis.