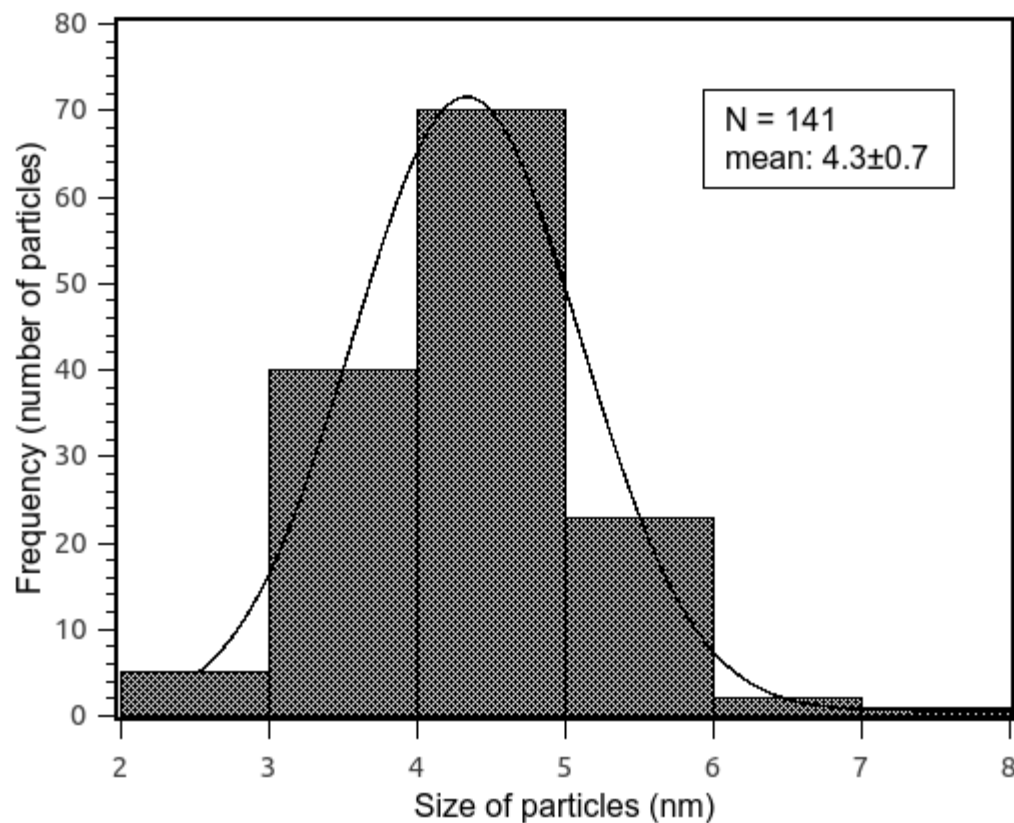
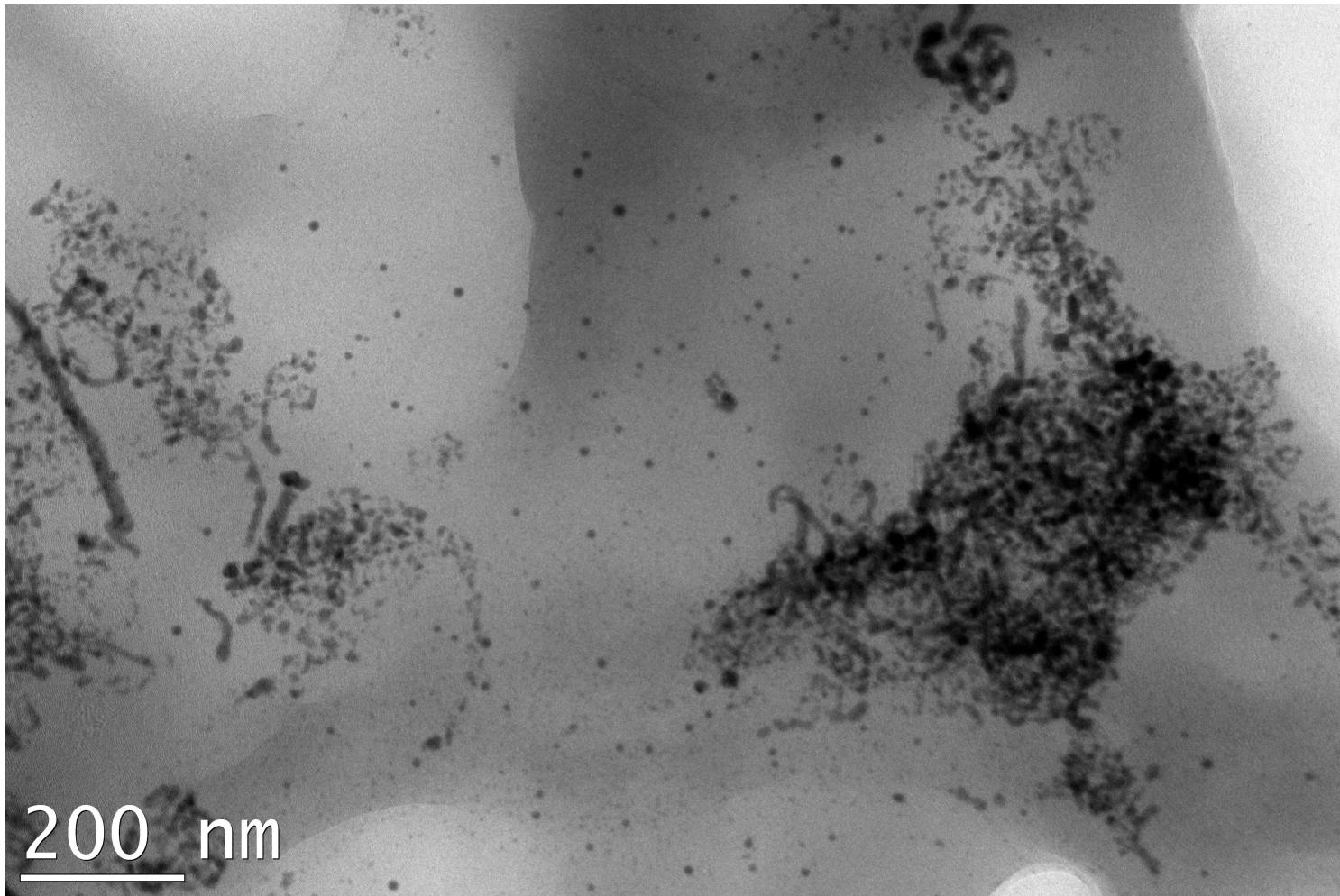


SI 1. The size distribution of selenium nanoparticles measured from TEM images via imageJ software; N: number of measured particles, curve: Gauss fit of dataset



SI 2. TEM image of the Se nanowires after 24 hr incubation with liquid mercury.



SI 3. TEM image of the Se nanowires (A) and polyhedral structures (B) after the incubation with liquid mercury.

