

## Supporting information

### Salicylaldehyde azine/MWCNTs/Nafion modified pyrolytic graphite electrode by anodic stripping voltammetric method

Yuan Liao <sup>a,b</sup>, Qian Li <sup>a</sup>, Ying Yue <sup>a</sup>, Shijun Shao <sup>a,\*</sup>

<sup>a</sup> *Key Laboratory of Chemistry of Northwestern Plant Resources of CAS and Key Laboratory for Natural Medicine of Gansu Province, Lanzhou institute of Chemical Physics, Chinese Academy of Sciences, Lanzhou 730000, P. R. China.*

<sup>b</sup> *University of Chinese Academy of Sciences, Beijing 100039, P. R. China.*

\* Corresponding author: Shijun Shao

Tel: +86-931-4968209

Fax: +86-931-8277088

E-mail: sjshao@licp.cas.cn

Fig. S1. synthesis of SA.

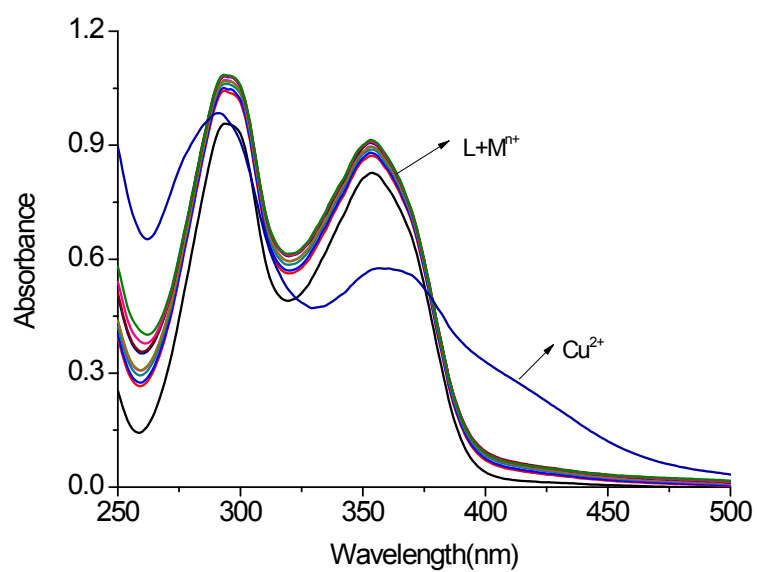


Fig. S2. Absorption spectra of SA ( $2.0 \times 10^{-5}$  M) in  $\text{CH}_3\text{CN-H}_2\text{O}$  (1:1, v/v) buffer solution upon addition of 3 equiv various metal ions such as :  $\text{Fe}^{3+}$ ,  $\text{Mn}^{2+}$ ,  $\text{Zn}^{2+}$ ,  $\text{Cd}^{2+}$ ,  $\text{Pb}^{2+}$ ,  $\text{Cu}^{2+}$ ,  $\text{Co}^{2+}$ ,  $\text{Ni}^{2+}$ ,  $\text{Ag}^+$ ,  $\text{Mg}^{2+}$ ,  $\text{Hg}^{2+}$ ,  $\text{Fe}^{2+}$ ,  $\text{Na}^+$ ,  $\text{K}^+$  and  $\text{Ca}^{2+}$ .

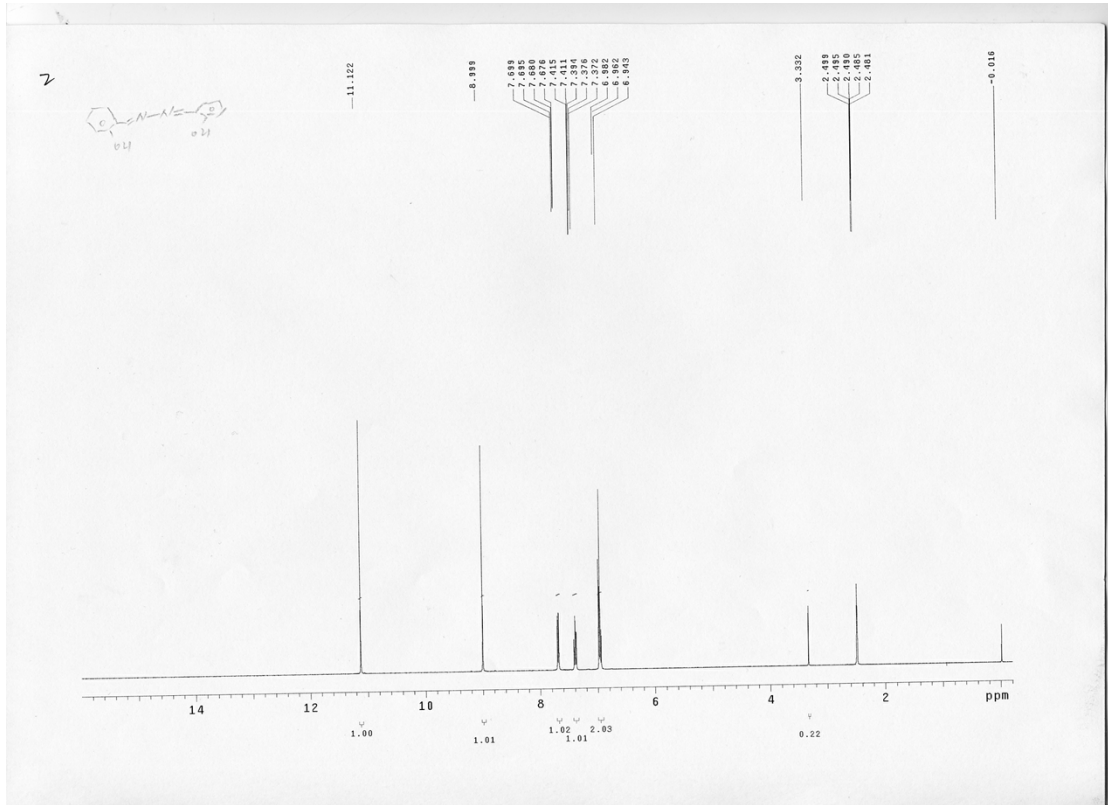


Fig. S3.  $^1\text{H}$  NMR Spectra of SA.

# Generic Display Report

**Analysis Info**  
Analysis Name D:\Data\YANGY\_MS\NewLIQIAN101216\_1.d  
Method LOWmass.m  
Sample Name M=240  
Comment

Acquisition Date 12/16/2010 3:26:54 PM  
Operator ESQ6K  
Instrument esquire6000

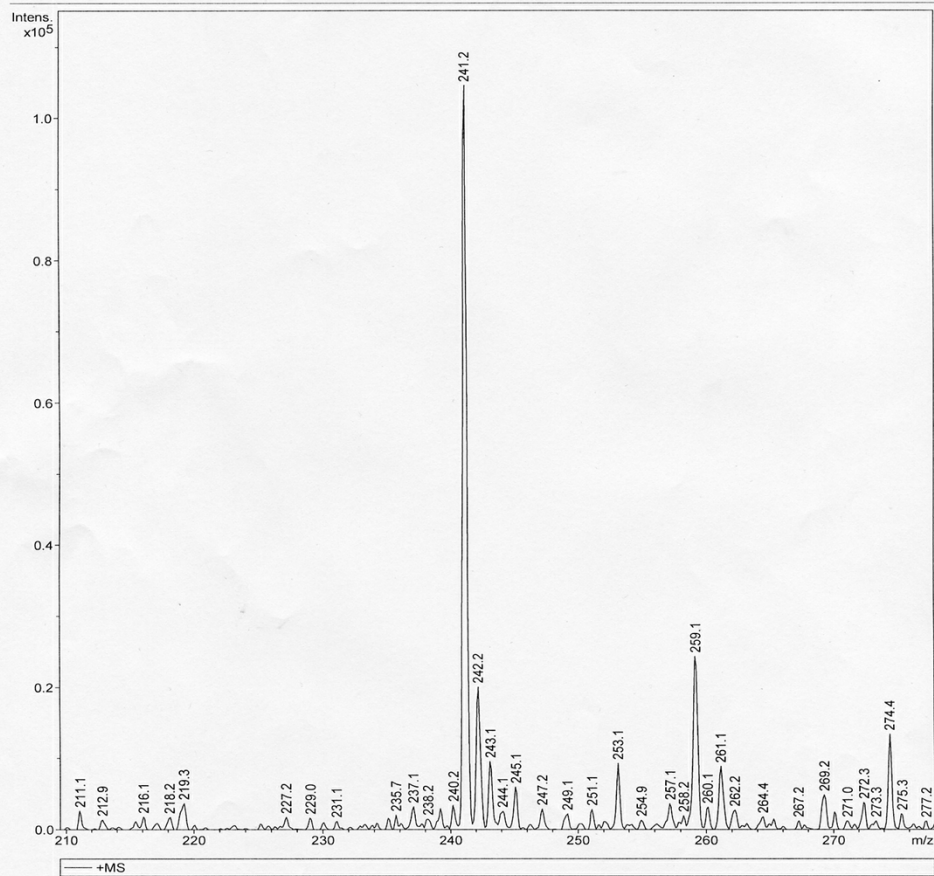


Fig. S4. EI-MS Spectra of SA.

# Generic Display Report

## Analysis Info

Analysis Name D:\Data\YANGY\New\LIAOYUAN140107.d  
Method tune\_low\_20130705.m  
Sample Name DEFAULT  
Comment

Acquisition Date 1/7/2014 3:20:35 PM

Operator BDAL@DE  
Instrument micrOTOF

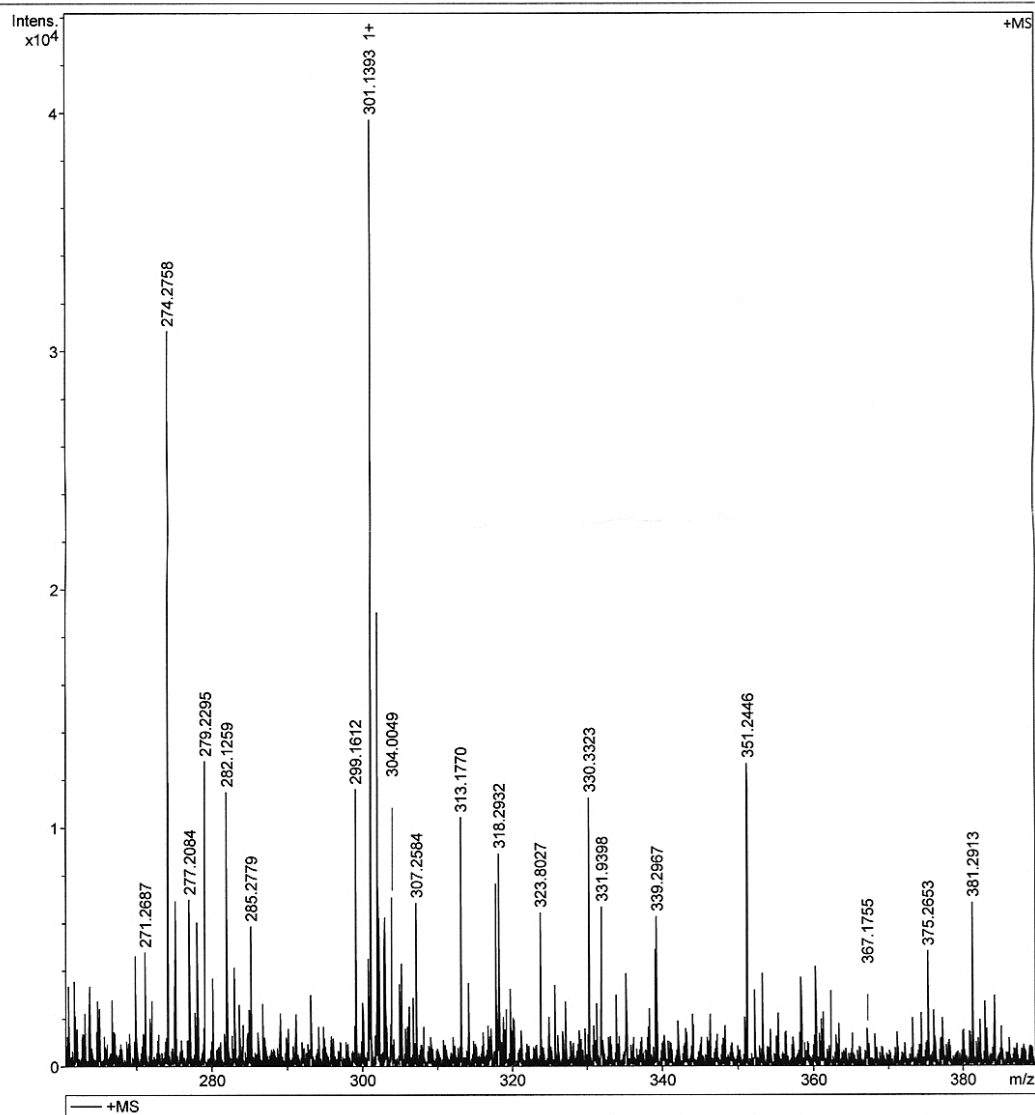


Fig. S5. EI-MS Spectra of complex SA·Cu<sup>2+</sup>.

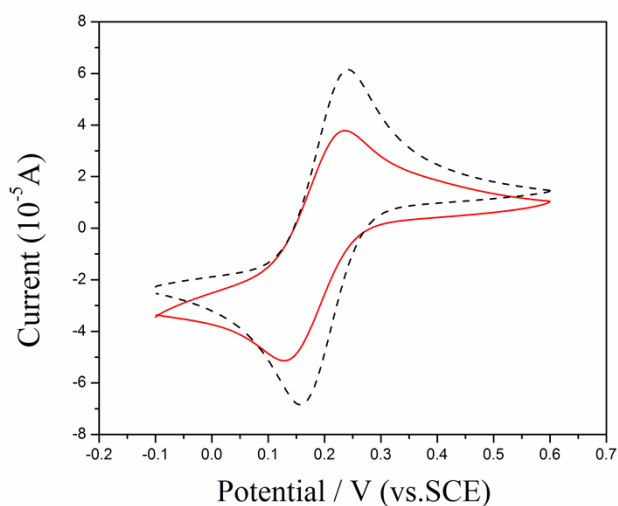


Fig. S6. Cyclic voltammograms of MWCNTs/Nafion/PGE (dash line) and SA/MWCNTs/Nafion/PGE (solid line) in  $5 \times 10^{-3}$  M  $[\text{Fe}(\text{CN})_6]^{3-/4-}$ . Scan rate: 100 mV/s.

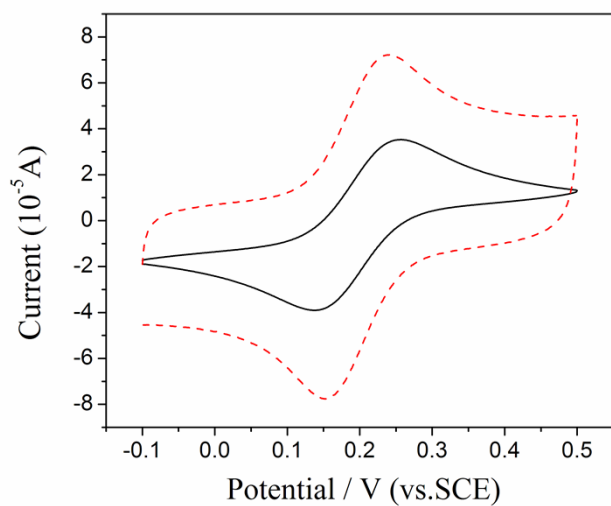


Fig. S7. Cyclic voltammograms of PGE (solid line) and MWCNTs/PGE (dash line) in  $5 \times 10^{-3}$  M  $[\text{Fe}(\text{CN})_6]^{3-/4-}$ . Scan rate: 100 mV/s.