

Supplementary Material

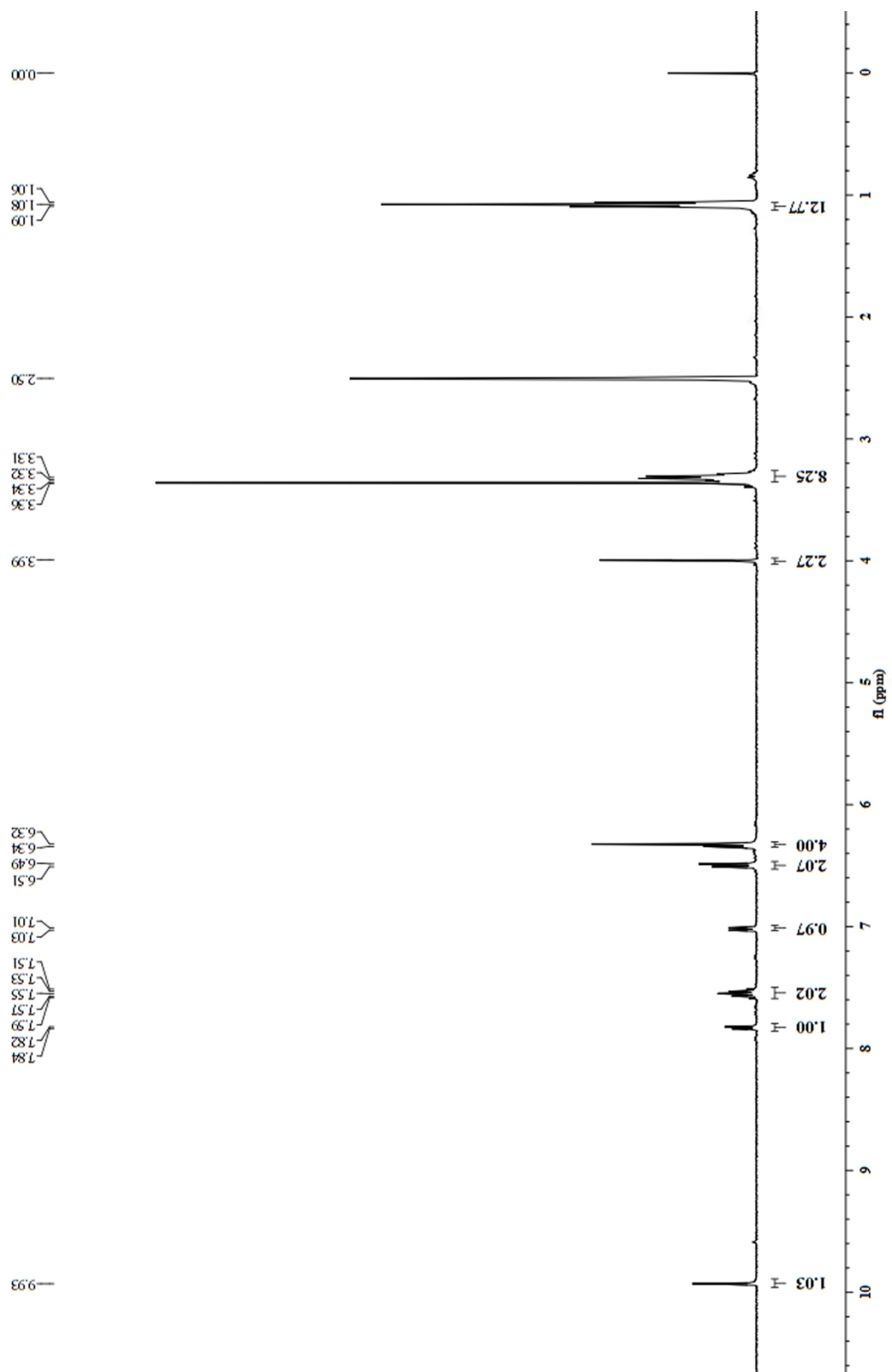


Fig. S1 ^1H NMR (DMSO, 400 MHz) spectrum of RB-Cl.

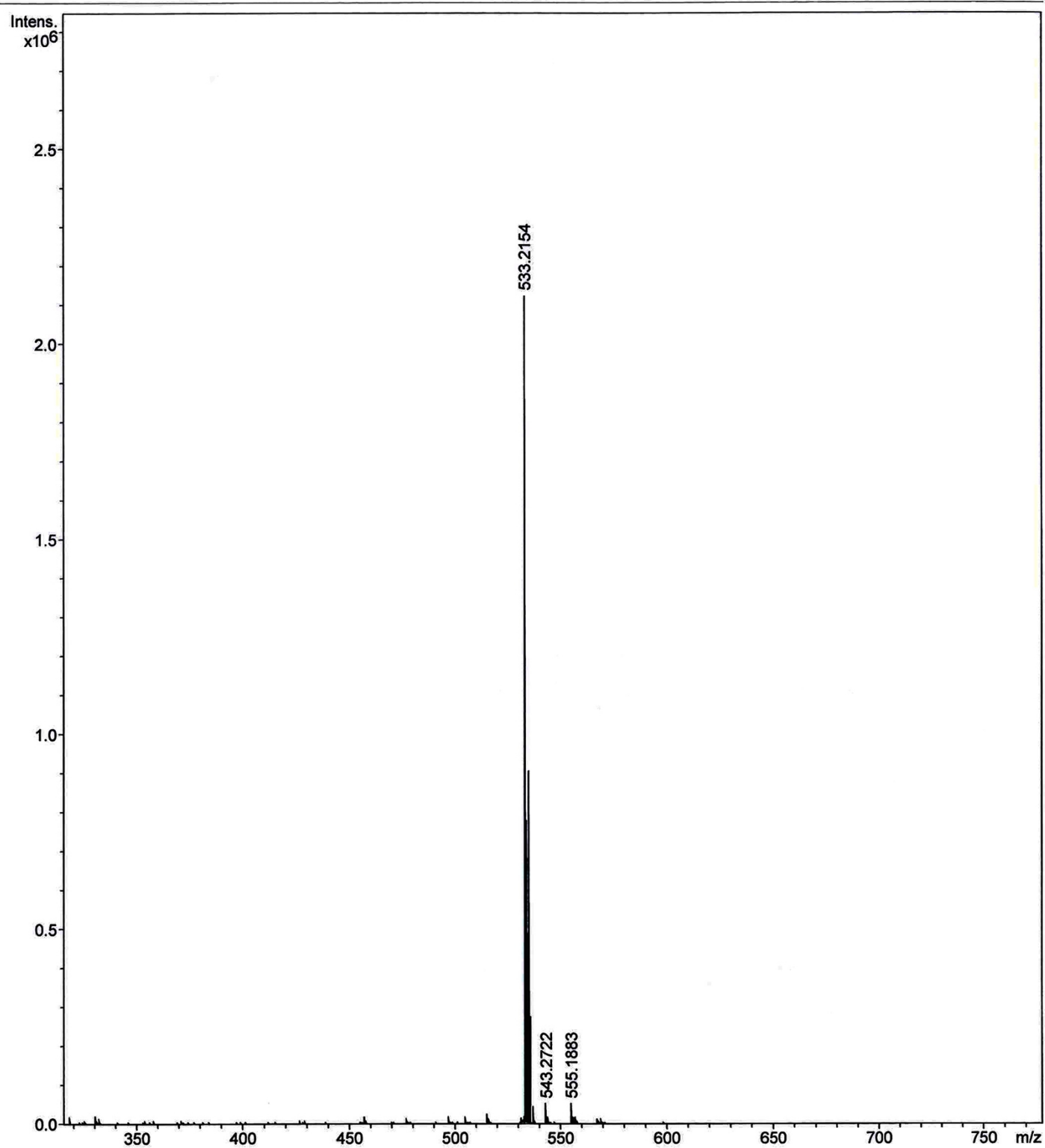


Fig. S2 ESI-MS spectrum of RB-Cl.

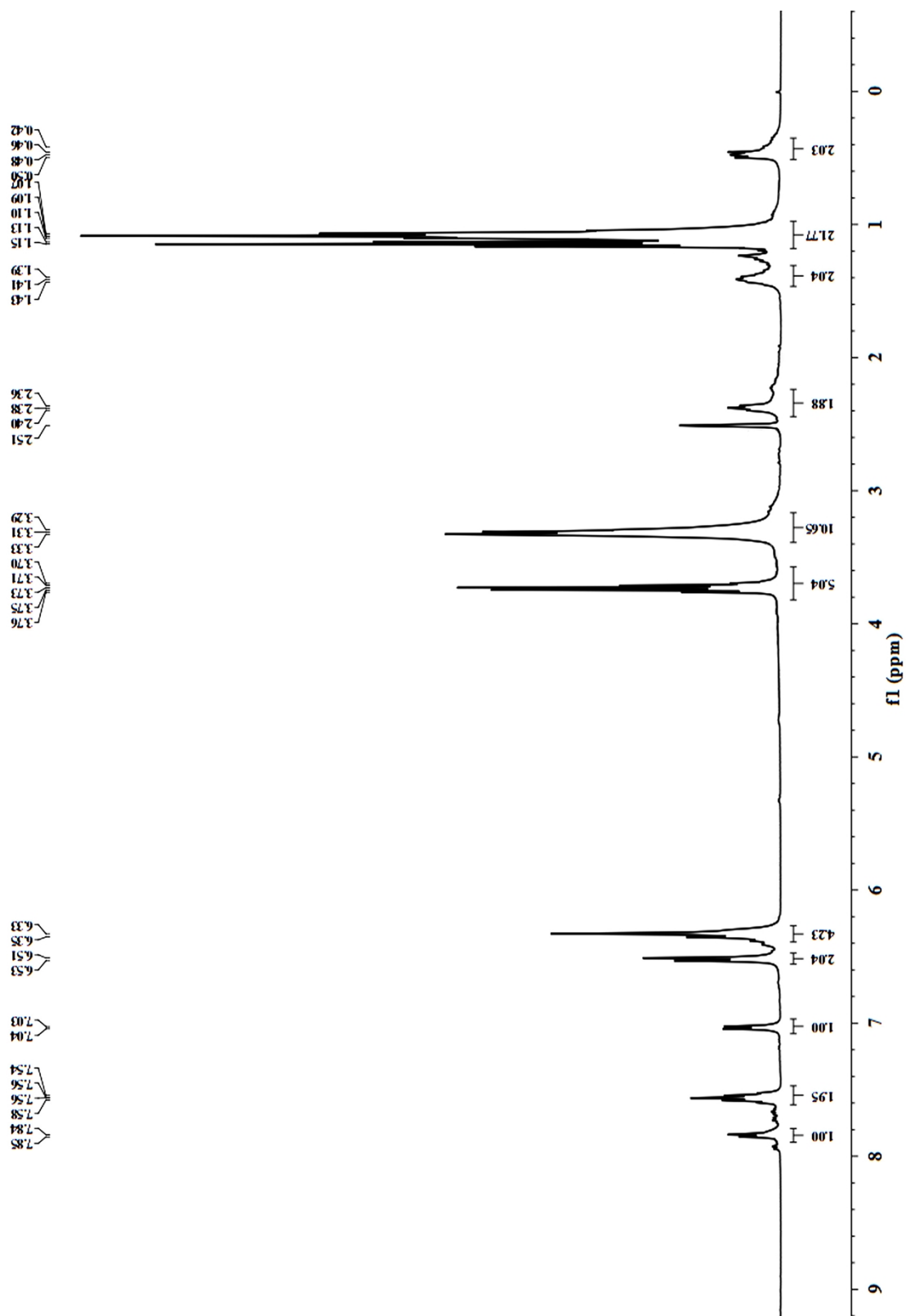


Fig. S3 ^1H NMR (DMSO, 400 MHz) spectrum of RB-Si.

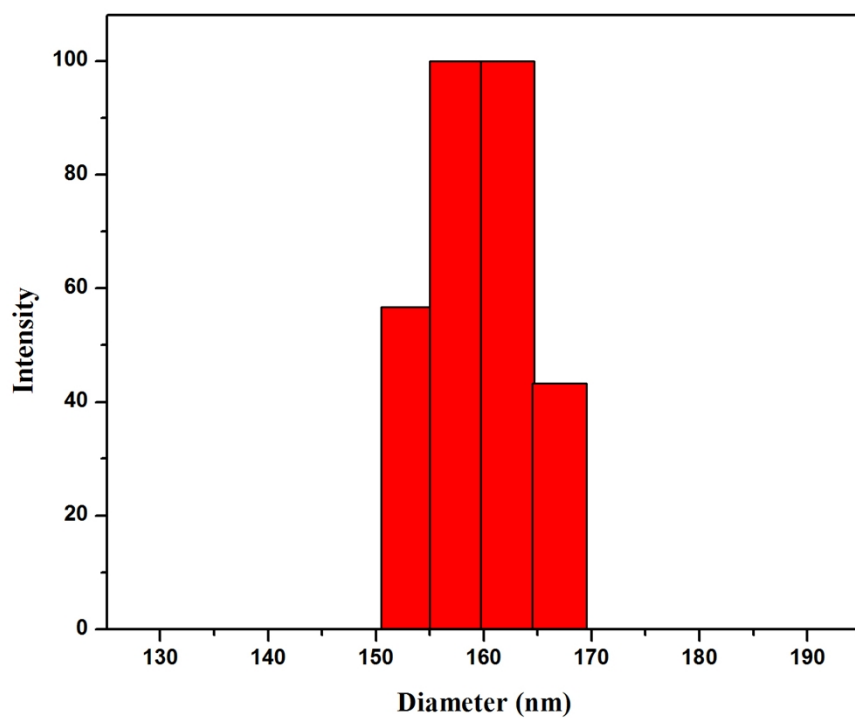


Fig. S4 The particle size histogram from DLS of RB-Fe₃O₄@SiO₂.

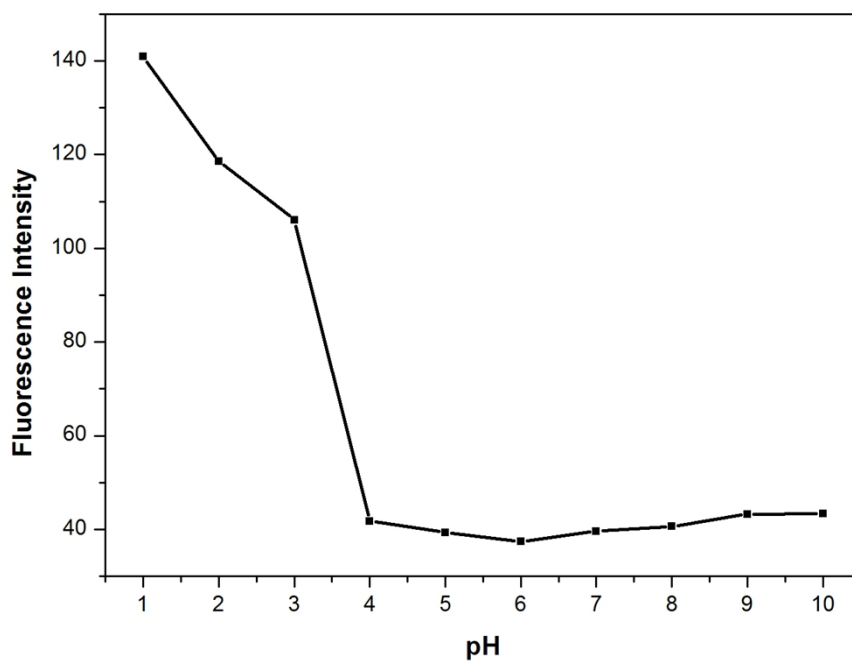


Fig. S5 Fluorescence intensity of **RB-Fe₃O₄@SiO₂** at various pH values in aqueous solution. Different pH values were achieved by varying the amount of 0.1 M NaOH/HCl added to the solution. $\lambda_{\text{ex}} = 535 \text{ nm}$, $\lambda_{\text{em}} = 582 \text{ nm}$.